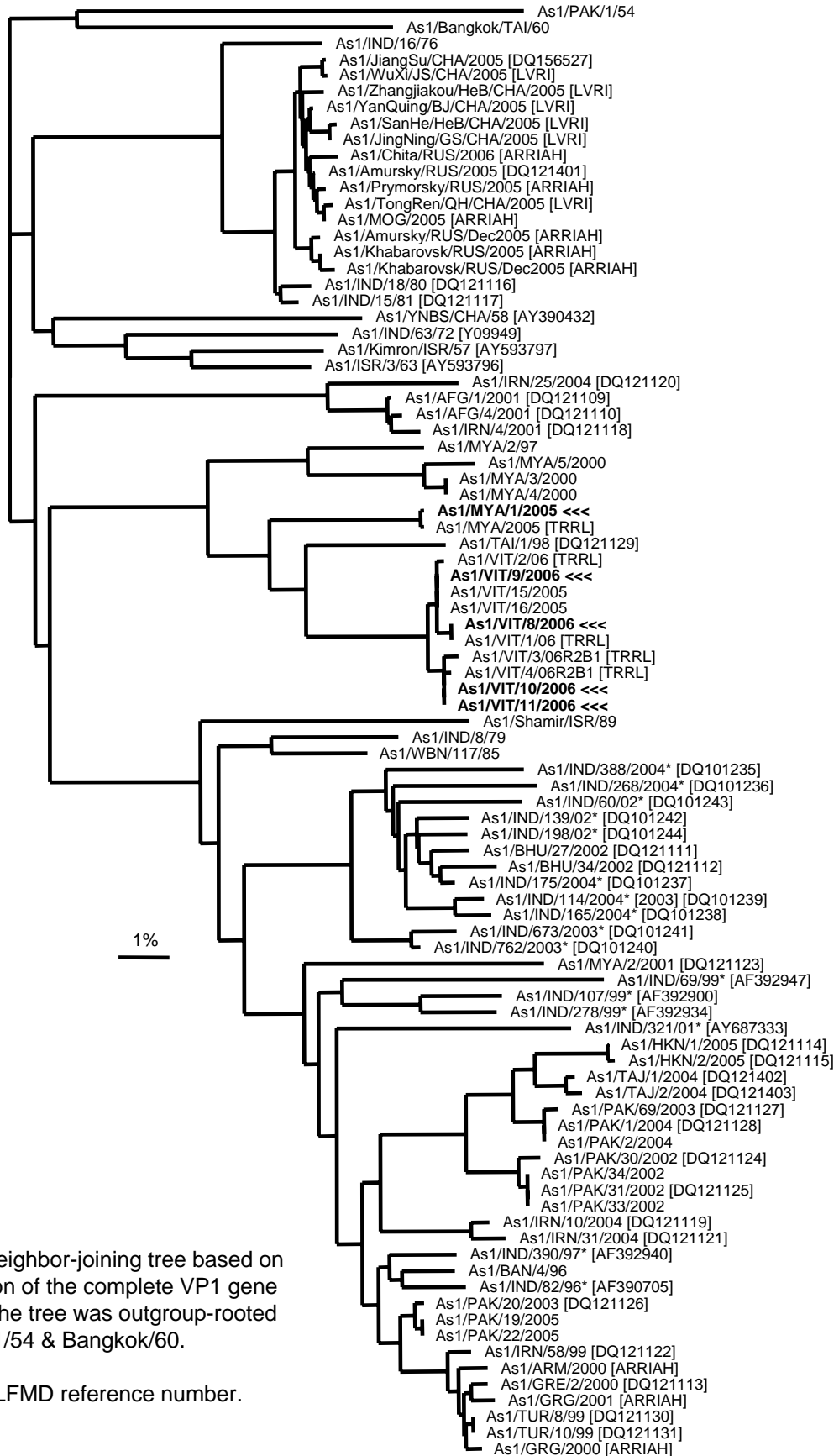




# Report on FMDV Asia 1 in Myanmar (2005) and Vietnam (2006) (viruses received from TRRL)



Unrooted Neighbor-joining tree based on a comparison of the complete VP1 gene (~633 nt). The tree was outgroup-rooted using PAK/1/54 & Bangkok/60.

\* Not a WRLFMD reference number.