



INSTITUTE FOR ANIMAL HEALTH

Director: Professor John Fazakerley BSc, MBA, PhD, FRCPath

PIRBRIGHT LABORATORY

Ash Road,

Pirbright,

Surrey,

GU24 0NF

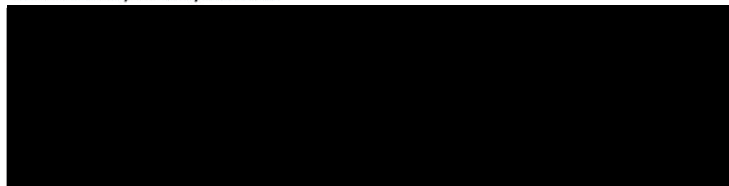
Intn Tel: 00 44 1483 232441

Tel: 01483 232441 Fax: 01483 232621

FMD Genotyping Report

Lab Reference WRL Batch Number: WRLFMD/2012/00023

Sender Details:



Date Received: 22nd June 2012

Country of Origin: Thailand

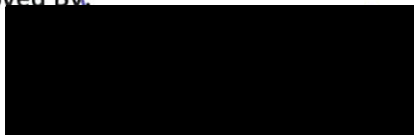
Date Reported: 20th July 2012

Dear Panithan Thongtha

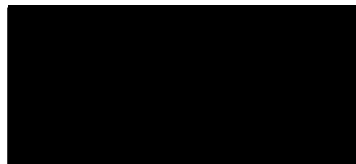
Sequencing work has now been completed in respect of the samples you submitted and the details are as attached. Please note that all of our phylogenetic trees can be accessed via the internet at:

<http://www.wrlfmd.org/>

Results Approved By:

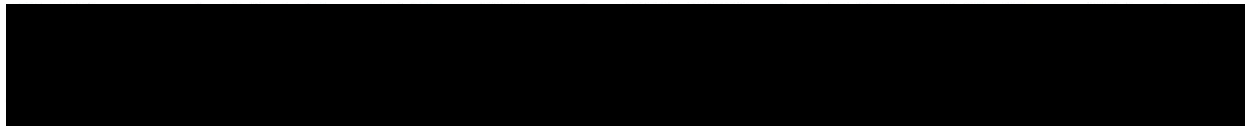


Official Stamp:



Date:

20/7/12



A UKAS accredited testing laboratory No. 4025.

To help us improve the quality of our service, please send any suggestions or requests to the Reference Laboratory by fax (+44 (0) 1483 232621 or email: gareth.shimmon@iah.ac.uk. IAH actively seeks and appreciates feedback, if you would like to offer feedback please complete the WRLFMD survey here: <http://www.surveymonkey.com/s/WRLFMD>

FAO World Reference Laboratory for Foot-and-Mouth Disease (WRLFMD)

Genotyping Report

Report Date for this Batch: 19 July 2012

FMDV type A

Country: Thailand

Period: 2011-2012

No. of samples: 19

BATCH: WRLFMD/2012/00023



The contents of this report are copyright and should not be reproduced without permission

© Institute for Animal Health

FAO World Reference Laboratory for FMD Genotyping Report

IAH-P-EP-MEG-FOR-005-3

Page 1 of 1

Serotype: A	Report date: 19/07/2012
WRLFMD Ref No: TAI/15/2011	Reported by: N.J. Knowles
Batch No: WRLFMD/2012/00023	Checked by: D.P. King
Sender Ref: A 89-2/11 R2B4	
Location: Nakhonsrithum Maratch, Thailand	Topotype: ASIA
Date collected: 21/10/2011	Genotype/strain: Sea-97
Date received by WRLFMD: 22/06/2012	Sequence filename: TAI11-15.SEQ
Date received for sequencing: 04/07/2012	Date sequence last updated: 11/07/2012
Species: Cattle	No. of Nt determined: 636
Material used: R2B4 BTy1	No. of ambiguities: 0
Region sequenced: VP1	Gene length: 636
RT-PCR primers: A-1C562F/EUR-2B52R	Total no. of comparisons: 1409
A-1C612F/EUR-2B52R	Min. no. of nt for comparison: 600
	Total turn-around time: 27 days
	Sequencing time: 15 days
Comments:	

Most Closely Related Viruses

Pos.	Virus name	Filename	No. nt comp.	No. nt match.	No. of ambig.	% Id.	% Diff.	Topotype	Strain
1	A/TAI/12/2011	TAI11-12	636	631	0	99.21	0.79	ASIA	Sea-97
2	A/TAI/24/2011	TAI11-24	636	631	0	99.21	0.79	ASIA	Sea-97
3	A/TAI/17/2011	TAI11-17	636	630	0	99.06	0.94	ASIA	Sea-97
4	A/TAI/18/2011	TAI11-18	636	630	0	99.06	0.94	ASIA	Sea-97
5	A/THA 66-1/10* (TRRL)	TAI10-AA	636	628	0	98.74	1.26	ASIA	Sea-97
6	A/TAI/7/2010	TAI10-07	636	627	0	98.58	1.42	ASIA	Sea-97
7	A/THA 67-3/10* (TRRL)	TAI10-AB	636	627	0	98.58	1.42	ASIA	Sea-97
8	A/TAI/8/2010	TAI10-08	636	626	0	98.43	1.57	ASIA	Sea-97
9	A/THA 69-6/10* (TRRL)	TAI10-AC	636	626	0	98.43	1.57	ASIA	Sea-97
10	A/TAI/1/2011	TAI11-01	636	625	0	98.27	1.73	ASIA	Sea-97

Most Closely Related Reference Viruses

(see http://www.wrlfmd.org/fmd_genotyping/prototypes.htm)

Pos.	Virus name	Filename	No. nt comp.	No. nt match.	No. of ambig.	% Id.	% Diff.	Topotype	Strain
1	A/TAI/7/2003 (HQ116312)	TAI03-07	636	596	0	93.71	6.29	ASIA	Sea-97
2	A/TAI/2/97 (EF208778)	TAI97-02	636	580	0	91.19	8.81	ASIA	Sea-97
3	A/TAI/118/87* (EF208777)	TAI87-AD	636	556	0	87.42	12.58	ASIA	Thai-87
4	A22/IRQ/64 (AY593763)	IRQ64--A	636	525	0	82.55	17.45	ASIA	A ₂₂
5	A/IRN/2/87 (EF208770)	IRN87-02	633	520	0	82.15	17.85	ASIA	Iran-87
6	A/IRN/78/2009	IRN09-78	636	517	0	81.29	18.71	ASIA	Iran-05 ^{FAR-09}
7	A15/Bangkok/TAI/60 (AY593755)	TAI60--D	636	516	0	81.13	18.87	ASIA	A15
8	A/IRN/1/96 (EF208771)	IRN96-01	635	515	1	81.10	18.90	ASIA	Iran-96
9	A/BAR/6/2008	BAR08-06	636	515	0	80.97	19.03	ASIA	Iran-05 ^{BAR-08}
10	A/IRN/125/2010	IRN10125	636	515	0	80.97	19.03	ASIA	Iran-05 ^{SIS-10}

nt, nucleotides

*, not a WRLFMD reference number

Assembled with Report Generator v4.1

© Institute for Animal Health (not to be reproduced without permission)

FAO World Reference Laboratory for FMD Genotyping Report

IAH-P-EP-MEG-FOR-005-3

Page 1 of 1

Serotype: A	Report date: 19/07/2012
WRLFMD Ref No: TAI/16/2011	Reported by: N.J. Knowles
Batch No: WRLFMD/2012/00023	Checked by: D.P. King
Sender Ref: A78/11 R2B6	
Location: Nakhonratsima, Thailand	Topotype: ASIA
Date collected: 24/10/2011	Genotype/strain: Sea-97
Date received by WRLFMD: 22/06/2012	Sequence filename: TAI11-16.SEQ
Date received for sequencing: 04/07/2012	Date sequence last updated: 11/07/2012
Species: Cattle	No. of Nt determined: 636
Material used: R2B6 BTy1	No. of ambiguities: 0
Region sequenced: VP1	Gene length: 636
RT-PCR primers: A-1C562F/EUR-2B52R	Total no. of comparisons: 1409
A-1C612F/EUR-2B52R	Min. no. of nt for comparison: 600
	Total turn-around time: 27 days
	Sequencing time: 15 days
Comments:	

Most Closely Related Viruses									
Pos.	Virus name	Filename	No. nt comp.	No. nt match.	No. of ambig.	% Id.	% Diff.	Topotype	Strain
1	A/TAI/3/2011	TAI11-03	636	630	0	99.06	0.94	ASIA	Sea-97
2	A/TAI/8/2010	TAI10-08	636	627	0	98.58	1.42	ASIA	Sea-97
3	A/THA 66-1/10* (TRRL)	TAI10-AA	636	627	0	98.58	1.42	ASIA	Sea-97
4	A/THA 69-6/10* (TRRL)	TAI10-AC	636	627	0	98.58	1.42	ASIA	Sea-97
5	A/TAI/1/2011	TAI11-01	636	626	0	98.43	1.57	ASIA	Sea-97
6	A/TAI/7/2010	TAI10-07	636	626	0	98.43	1.57	ASIA	Sea-97
7	A/THA 67-3/10* (TRRL)	TAI10-AB	636	626	0	98.43	1.57	ASIA	Sea-97
8	A/MAY/2/2011	MAY11-02	636	623	0	97.96	2.04	ASIA	Sea-97
9	A/MAY/20/2011	MAY11-20	636	623	0	97.96	2.04	ASIA	Sea-97
10	A/TAI/3/2012	TAI12-03	636	623	0	97.96	2.04	ASIA	Sea-97
Most Closely Related Reference Viruses									
(see http://www.wrlfmd.org/fmd_genotyping/prototypes.htm)									
Pos.	Virus name	Filename	No. nt comp.	No. nt match.	No. of ambig.	% Id.	% Diff.	Topotype	Strain
1	A/TAI/7/2003 (HQ116312)	TAI03-07	636	597	0	93.87	6.13	ASIA	Sea-97
2	A/TAI/2/97 (EF208778)	TAI97-02	636	579	0	91.04	8.96	ASIA	Sea-97
3	A/TAI/118/87* (EF208777)	TAI87-AD	636	559	0	87.89	12.11	ASIA	Thai-87
4	A22/IRQ/64 (AY593763)	IRQ64--A	636	523	0	82.23	17.77	ASIA	A ₂₂
5	A/TUR/1/2008	TUR08-01	636	519	0	81.60	18.40	ASIA	Iran-05 ^{ARD-07}
6	A/IRN/2/87 (EF208770)	IRN87-02	633	515	0	81.36	18.64	ASIA	Iran-87
7	A/IRN/78/2009	IRN09-78	636	517	0	81.29	18.71	ASIA	Iran-05 ^{FAR-09}
8	A/IRN/1/2005 (EF208769)	IRN05-01	636	516	0	81.13	18.87	ASIA	Iran-05
9	A/TUR/33/2008	TUR08-33	636	516	0	81.13	18.87	ASIA	Iran-05 ^{EZM-07}
10	A15/Bangkok/TAI/60 (AY593755)	TAI60--D	636	516	0	81.13	18.87	ASIA	A15

nt, nucleotides

*, not a WRLFMD reference number

Assembled with Report Generator v4.1

© Institute for Animal Health (not to be reproduced without permission)

FAO World Reference Laboratory for FMD Genotyping Report

IAH-P-EP-MEG-FOR-005-3

Page 1 of 1

Serotype: A	Report date: 19/07/2012
WRLFMD Ref No: TAI/17/2011	Reported by: N.J. Knowles
Batch No: WRLFMD/2012/00023	Checked by: D.P. King
Sender Ref: A79-1/11 B5	
Location: Ratchaburi, Thailand	Topotype: ASIA
Date collected: 24/10/2011	Genotype/strain: Sea-97
Date received by WRLFMD: 22/06/2012	Sequence filename: TAI11-17.SEQ
Date received for sequencing: 04/07/2012	Date sequence last updated: 11/07/2012
Species: Cattle	No. of Nt determined: 636
Material used: B5 BTy1	No. of ambiguities: 0
Region sequenced: VP1	Gene length: 636
RT-PCR primers: A-1C562F/EUR-2B52R	Total no. of comparisons: 1409
A-1C612F/EUR-2B52R	Min. no. of nt for comparison: 600
	Total turn-around time: 27 days
	Sequencing time: 15 days
Comments:	

Most Closely Related Viruses									
Pos.	Virus name	Filename	No. nt comp.	No. nt match.	No. of ambig.	% Id.	% Diff.	Topotype	Strain
1	A/TAI/12/2011	TAI11-12	636	635	0	99.84	0.16	ASIA	Sea-97
2	A/TAI/18/2011	TAI11-18	636	632	0	99.37	0.63	ASIA	Sea-97
3	A/TAI/15/2011	TAI11-15	636	630	0	99.06	0.94	ASIA	Sea-97
4	A/THA 66-1/10* (TRRL)	TAI10-AA	636	630	0	99.06	0.94	ASIA	Sea-97
5	A/TAI/24/2011	TAI11-24	636	629	0	98.90	1.10	ASIA	Sea-97
6	A/TAI/7/2010	TAI10-07	636	629	0	98.90	1.10	ASIA	Sea-97
7	A/THA 67-3/10* (TRRL)	TAI10-AB	636	629	0	98.90	1.10	ASIA	Sea-97
8	A/TAI/8/2010	TAI10-08	636	628	0	98.74	1.26	ASIA	Sea-97
9	A/THA 69-6/10* (TRRL)	TAI10-AC	636	628	0	98.74	1.26	ASIA	Sea-97
10	A/TAI/1/2011	TAI11-01	636	627	0	98.58	1.42	ASIA	Sea-97
Most Closely Related Reference Viruses									
(see http://www.wrlfmd.org/fmd_genotyping/prototypes.htm)									
Pos.	Virus name	Filename	No. nt comp.	No. nt match.	No. of ambig.	% Id.	% Diff.	Topotype	Strain
1	A/TAI/7/2003 (HQ116312)	TAI03-07	636	598	0	94.03	5.97	ASIA	Sea-97
2	A/TAI/2/97 (EF208778)	TAI97-02	636	582	0	91.51	8.49	ASIA	Sea-97
3	A/TAI/118/87* (EF208777)	TAI87-AD	636	556	0	87.42	12.58	ASIA	Thai-87
4	A22/IRQ/64 (AY593763)	IRQ64--A	636	524	0	82.39	17.61	ASIA	A ₂₂
5	A/IRN/78/2009	IRN09-78	636	520	0	81.76	18.24	ASIA	Iran-05 ^{FAR-09}
6	A/IRN/2/87 (EF208770)	IRN87-02	633	517	0	81.67	18.33	ASIA	Iran-87
7	A/BAR/6/2008	BAR08-06	636	518	0	81.45	18.55	ASIA	Iran-05 ^{BAR-08}
8	A/IRN/125/2010	IRN10125	636	518	0	81.45	18.55	ASIA	Iran-05 ^{SIS-10}
9	A/AFG/10/2010	AFG10-10	636	517	0	81.29	18.71	ASIA	Iran-05 ^{HER-10}
10	A/IRN/1/2005 (EF208769)	IRN05-01	636	517	0	81.29	18.71	ASIA	Iran-05

nt, nucleotides

*, not a WRLFMD reference number

Assembled with Report Generator v4.1

© Institute for Animal Health (not to be reproduced without permission)

FAO World Reference Laboratory for FMD Genotyping Report

IAH-P-EP-MEG-FOR-005-3

Page 1 of 1

Serotype: A	Report date: 19/07/2012
WRLFMD Ref No: TAI/18/2011	Reported by: N.J. Knowles
Batch No: WRLFMD/2012/00023	Checked by: D.P. King
Sender Ref: A80-3/11 R1B4	
Location: Yala, Thailand	Topotype: ASIA
Date collected: 24/10/2011	Genotype/strain: Sea-97
Date received by WRLFMD: 22/06/2012	Sequence filename: TAI11-18.SEQ
Date received for sequencing: 04/07/2012	Date sequence last updated: 12/07/2012
Species: Cattle	No. of Nt determined: 636
Material used: R1B4 BTy1	No. of ambiguities: 0
Region sequenced: VP1	Gene length: 636
RT-PCR primers: A-1C562F/EUR-2B52R	Total no. of comparisons: 1409
A-1C612F/EUR-2B52R	Min. no. of nt for comparison: 600
	Total turn-around time: 27 days
	Sequencing time: 15 days
Comments:	

Most Closely Related Viruses									
Pos.	Virus name	Filename	No. nt comp.	No. nt match.	No. of ambig.	% Id.	% Diff.	Topotype	Strain
1	A/TAI/12/2011	TAI11-12	636	633	0	99.53	0.47	ASIA	Sea-97
2	A/TAI/17/2011	TAI11-17	636	632	0	99.37	0.63	ASIA	Sea-97
3	A/TAI/15/2011	TAI11-15	636	630	0	99.06	0.94	ASIA	Sea-97
4	A/THA 66-1/10* (TRRL)	TAI10-AA	636	630	0	99.06	0.94	ASIA	Sea-97
5	A/TAI/24/2011	TAI11-24	636	629	0	98.90	1.10	ASIA	Sea-97
6	A/TAI/7/2010	TAI10-07	636	629	0	98.90	1.10	ASIA	Sea-97
7	A/THA 67-3/10* (TRRL)	TAI10-AB	636	629	0	98.90	1.10	ASIA	Sea-97
8	A/TAI/8/2010	TAI10-08	636	628	0	98.74	1.26	ASIA	Sea-97
9	A/THA 69-6/10* (TRRL)	TAI10-AC	636	628	0	98.74	1.26	ASIA	Sea-97
10	A/TAI/1/2011	TAI11-01	636	627	0	98.58	1.42	ASIA	Sea-97
Most Closely Related Reference Viruses									
(see http://www.wrlfmd.org/fmd_genotyping/prototypes.htm)									
Pos.	Virus name	Filename	No. nt comp.	No. nt match.	No. of ambig.	% Id.	% Diff.	Topotype	Strain
1	A/TAI/7/2003 (HQ116312)	TAI03-07	636	598	0	94.03	5.97	ASIA	Sea-97
2	A/TAI/2/97 (EF208778)	TAI97-02	636	581	0	91.35	8.65	ASIA	Sea-97
3	A/TAI/118/87* (EF208777)	TAI87-AD	636	554	0	87.11	12.89	ASIA	Thai-87
4	A22/IRQ/64 (AY593763)	IRQ64--A	636	524	0	82.39	17.61	ASIA	A ₂₂
5	A/IRN/78/2009	IRN09-78	636	520	0	81.76	18.24	ASIA	Iran-05 ^{FAR-09}
6	A/IRN/2/87 (EF208770)	IRN87-02	633	517	0	81.67	18.33	ASIA	Iran-87
7	A/BAR/6/2008	BAR08-06	636	518	0	81.45	18.55	ASIA	Iran-05 ^{BAR-08}
8	A/IRN/125/2010	IRN10125	636	518	0	81.45	18.55	ASIA	Iran-05 ^{SIS-10}
9	A/AFG/10/2010	AFG10-10	636	517	0	81.29	18.71	ASIA	Iran-05 ^{HER-10}
10	A/IRN/1/2005 (EF208769)	IRN05-01	636	517	0	81.29	18.71	ASIA	Iran-05

nt, nucleotides

*, not a WRLFMD reference number

Assembled with Report Generator v4.1

© Institute for Animal Health (not to be reproduced without permission)

FAO World Reference Laboratory for FMD Genotyping Report

IAH-P-EP-MEG-FOR-005-3

Page 1 of 1

Serotype: A	Report date: 19/07/2012
WRLFMD Ref No: TAI/19/2011	Reported by: N.J. Knowles
Batch No: WRLFMD/2012/00023	Checked by: D.P. King
Sender Ref: A83/11 R2B5	
Location: Songkhla, Thailand	Topotype: ASIA
Date collected: 24/10/2011	Genotype/strain: Sea-97
Date received by WRLFMD: 22/06/2012	Sequence filename: TAI11-19.SEQ
Date received for sequencing: 04/07/2012	Date sequence last updated: 12/07/2012
Species: Cattle	No. of Nt determined: 636
Material used: R2B5 BTy1	No. of ambiguities: 0
Region sequenced: VP1	Gene length: 636
RT-PCR primers: A-1C562F/EUR-2B52R	Total no. of comparisons: 1409
A-1C612F/EUR-2B52R	Min. no. of nt for comparison: 600
	Total turn-around time: 27 days
	Sequencing time: 15 days
Comments:	

Most Closely Related Viruses									
Pos.	Virus name	Filename	No. nt comp.	No. nt match.	No. of ambig.	% Id.	% Diff.	Topotype	Strain
1	A/TAI/20/2011	TAI11-20	636	634	0	99.69	0.31	ASIA	Sea-97
2	A/TAI/10/2011	TAI11-10	636	629	0	98.90	1.10	ASIA	Sea-97
3	A/MAY/2/2011	MAY11-02	636	628	0	98.74	1.26	ASIA	Sea-97
4	A/TAI/9/2011	TAI11-09	636	628	0	98.74	1.26	ASIA	Sea-97
5	A/TAI/11/2011	TAI11-11	636	627	0	98.58	1.42	ASIA	Sea-97
6	A/TAI/6/2011	TAI11-06	636	627	0	98.58	1.42	ASIA	Sea-97
7	A/TAI/8/2011	TAI11-08	636	627	0	98.58	1.42	ASIA	Sea-97
8	A/TAI/13/2011	TAI11-13	636	624	0	98.11	1.89	ASIA	Sea-97
9	A/TAI/23/2011	TAI11-23	636	624	0	98.11	1.89	ASIA	Sea-97
10	A/TAI/8/2010	TAI10-08	636	624	0	98.11	1.89	ASIA	Sea-97
Most Closely Related Reference Viruses									
(see http://www.wrlfmd.org/fmd_genotyping/prototypes.htm)									
Pos.	Virus name	Filename	No. nt comp.	No. nt match.	No. of ambig.	% Id.	% Diff.	Topotype	Strain
1	A/TAI/7/2003 (HQ116312)	TAI03-07	636	597	0	93.87	6.13	ASIA	Sea-97
2	A/TAI/2/97 (EF208778)	TAI97-02	636	581	0	91.35	8.65	ASIA	Sea-97
3	A/TAI/118/87* (EF208777)	TAI87-AD	636	558	0	87.74	12.26	ASIA	Thai-87
4	A22/IRQ/64 (AY593763)	IRQ64--A	636	530	0	83.33	16.67	ASIA	A ₂₂
5	A/IRN/2/87 (EF208770)	IRN87-02	633	522	0	82.46	17.54	ASIA	Iran-87
6	A/TUR/1/2008	TUR08-01	636	523	0	82.23	17.77	ASIA	Iran-05 ^{ARD-07}
7	A/IRN/78/2009	IRN09-78	636	522	0	82.08	17.92	ASIA	Iran-05 ^{FAR-09}
8	A/TUR/33/2008	TUR08-33	636	522	0	82.08	17.92	ASIA	Iran-05 ^{EZM-07}
9	A/IRN/1/2005 (EF208769)	IRN05-01	636	521	0	81.92	18.08	ASIA	Iran-05
10	A/IRN/1/96 (EF208771)	IRN96-01	635	520	1	81.89	18.11	ASIA	Iran-96

nt, nucleotides

*, not a WRLFMD reference number

Assembled with Report Generator v4.1

© Institute for Animal Health (not to be reproduced without permission)

FAO World Reference Laboratory for FMD Genotyping Report

IAH-P-EP-MEG-FOR-005-3

Page 1 of 1

Serotype: A	Report date: 19/07/2012
WRLFMD Ref No: TAI/20/2011	Reported by: N.J. Knowles
Batch No: WRLFMD/2012/00023	Checked by: D.P. King
Sender Ref: A84/11 R2B5	
Location: Songkhla, Thailand	Topotype: ASIA
Date collected: 24/10/2011	Genotype/strain: Sea-97
Date received by WRLFMD: 22/06/2012	Sequence filename: TAI11-20.SEQ
Date received for sequencing: 04/07/2012	Date sequence last updated: 12/07/2012
Species: Cattle	No. of Nt determined: 636
Material used: R2B5 BTy1	No. of ambiguities: 0
Region sequenced: VP1	Gene length: 636
RT-PCR primers: A-1C562F/EUR-2B52R	Total no. of comparisons: 1409
A-1C612F/EUR-2B52R	Min. no. of nt for comparison: 600
	Total turn-around time: 27 days
	Sequencing time: 15 days
Comments:	

Most Closely Related Viruses									
Pos.	Virus name	Filename	No. nt comp.	No. nt match.	No. of ambig.	% Id.	% Diff.	Topotype	Strain
1	A/TAI/19/2011	TAI11-19	636	634	0	99.69	0.31	ASIA	Sea-97
2	A/TAI/10/2011	TAI11-10	636	629	0	98.90	1.10	ASIA	Sea-97
3	A/MAY/2/2011	MAY11-02	636	628	0	98.74	1.26	ASIA	Sea-97
4	A/TAI/9/2011	TAI11-09	636	628	0	98.74	1.26	ASIA	Sea-97
5	A/TAI/11/2011	TAI11-11	636	627	0	98.58	1.42	ASIA	Sea-97
6	A/TAI/6/2011	TAI11-06	636	627	0	98.58	1.42	ASIA	Sea-97
7	A/TAI/8/2011	TAI11-08	636	627	0	98.58	1.42	ASIA	Sea-97
8	A/TAI/13/2011	TAI11-13	636	624	0	98.11	1.89	ASIA	Sea-97
9	A/TAI/23/2011	TAI11-23	636	624	0	98.11	1.89	ASIA	Sea-97
10	A/TAI/8/2010	TAI10-08	636	624	0	98.11	1.89	ASIA	Sea-97
Most Closely Related Reference Viruses									
(see http://www.wrlfmd.org/fmd_genotyping/prototypes.htm)									
Pos.	Virus name	Filename	No. nt comp.	No. nt match.	No. of ambig.	% Id.	% Diff.	Topotype	Strain
1	A/TAI/7/2003 (HQ116312)	TAI03-07	636	597	0	93.87	6.13	ASIA	Sea-97
2	A/TAI/2/97 (EF208778)	TAI97-02	636	581	0	91.35	8.65	ASIA	Sea-97
3	A/TAI/118/87* (EF208777)	TAI87-AD	636	558	0	87.74	12.26	ASIA	Thai-87
4	A22/IRQ/64 (AY593763)	IRQ64--A	636	528	0	83.02	16.98	ASIA	A ₂₂
5	A/IRN/2/87 (EF208770)	IRN87-02	633	520	0	82.15	17.85	ASIA	Iran-87
6	A/TUR/1/2008	TUR08-01	636	521	0	81.92	18.08	ASIA	Iran-05 ^{ARD-07}
7	A/IRN/78/2009	IRN09-78	636	520	0	81.76	18.24	ASIA	Iran-05 ^{FAR-09}
8	A/TUR/33/2008	TUR08-33	636	520	0	81.76	18.24	ASIA	Iran-05 ^{EZM-07}
9	A/IRN/1/2005 (EF208769)	IRN05-01	636	519	0	81.60	18.40	ASIA	Iran-05
10	A/IRN/1/96 (EF208771)	IRN96-01	635	518	1	81.57	18.43	ASIA	Iran-96

nt, nucleotides

*, not a WRLFMD reference number

Assembled with Report Generator v4.1

© Institute for Animal Health (not to be reproduced without permission)

FAO World Reference Laboratory for FMD Genotyping Report

IAH-P-EP-MEG-FOR-005-3

Page 1 of 1

Serotype: A	Report date: 19/07/2012
WRLFMD Ref No: TAI/23/2011	Reported by: N.J. Knowles
Batch No: WRLFMD/2012/00023	Checked by: D.P. King
Sender Ref: A 94-3/11 R1B4	
Location: Kanjanaburi, Thailand	Topotype: ASIA
Date collected: 23/11/2011	Genotype/strain: Sea-97
Date received by WRLFMD: 22/06/2012	Sequence filename: TAI11-23.SEQ
Date received for sequencing: 04/07/2012	Date sequence last updated: 19/07/2012
Species: Cattle	No. of Nt determined: 636
Material used: R2B4 BTy1	No. of ambiguities: 0
Region sequenced: VP1	Gene length: 636
RT-PCR primers: A-1C612F/EUR-2B52R	Total no. of comparisons: 1409
	Min. no. of nt for comparison: 600
	Total turn-around time: 27 days
	Sequencing time: 15 days
Comments:	

Most Closely Related Viruses									
Pos.	Virus name	Filename	No. nt comp.	No. nt match.	No. of ambig.	% Id.	% Diff.	Topotype	Strain
1	A/TAI/9/2011	TAI11-09	636	630	0	99.06	0.94	ASIA	Sea-97
2	A/MAY/2/2011	MAY11-02	636	629	0	98.90	1.10	ASIA	Sea-97
3	A/TAI/10/2011	TAI11-10	636	629	0	98.90	1.10	ASIA	Sea-97
4	A/TAI/8/2011	TAI11-08	636	629	0	98.90	1.10	ASIA	Sea-97
5	A/TAI/11/2011	TAI11-11	636	627	0	98.58	1.42	ASIA	Sea-97
6	A/TAI/6/2011	TAI11-06	636	627	0	98.58	1.42	ASIA	Sea-97
7	A/TAI/13/2011	TAI11-13	636	624	0	98.11	1.89	ASIA	Sea-97
8	A/TAI/19/2011	TAI11-19	636	624	0	98.11	1.89	ASIA	Sea-97
9	A/TAI/20/2011	TAI11-20	636	624	0	98.11	1.89	ASIA	Sea-97
10	A/TAI/8/2010	TAI10-08	636	624	0	98.11	1.89	ASIA	Sea-97
Most Closely Related Reference Viruses									
(see http://www.wrlfmd.org/fmd_genotyping/prototypes.htm)									
Pos.	Virus name	Filename	No. nt comp.	No. nt match.	No. of ambig.	% Id.	% Diff.	Topotype	Strain
1	A/TAI/7/2003 (HQ116312)	TAI03-07	636	597	0	93.87	6.13	ASIA	Sea-97
2	A/TAI/2/97 (EF208778)	TAI97-02	636	581	0	91.35	8.65	ASIA	Sea-97
3	A/TAI/118/87* (EF208777)	TAI87-AD	636	556	0	87.42	12.58	ASIA	Thai-87
4	A22/IRQ/64 (AY593763)	IRQ64--A	636	528	0	83.02	16.98	ASIA	A ₂₂
5	A/IRN/1/96 (EF208771)	IRN96-01	635	521	1	82.05	17.95	ASIA	Iran-96
6	A/IRN/2/87 (EF208770)	IRN87-02	633	519	0	81.99	18.01	ASIA	Iran-87
7	A/BAR/6/2008	BAR08-06	636	520	0	81.76	18.24	ASIA	Iran-05 ^{BAR-08}
8	A/IRN/78/2009	IRN09-78	636	520	0	81.76	18.24	ASIA	Iran-05 ^{FAR-09}
9	A/IRN/1/2005 (EF208769)	IRN05-01	636	519	0	81.60	18.40	ASIA	Iran-05
10	A/TUR/1/2008	TUR08-01	636	519	0	81.60	18.40	ASIA	Iran-05 ^{ARD-07}

nt, nucleotides

*, not a WRLFMD reference number

Assembled with Report Generator v4.1

© Institute for Animal Health (not to be reproduced without permission)

FAO World Reference Laboratory for FMD Genotyping Report

IAH-P-EP-MEG-FOR-005-3

Page 1 of 1

Serotype: A	Report date: 19/07/2012
WRLFMD Ref No: TAI/24/2011	Reported by: N.J. Knowles
Batch No: WRLFMD/2012/00023	Checked by: D.P. King
Sender Ref: A 98/11 R1B3	
Location: Pattalong, Thailand	Topotype: ASIA
Date collected: 23/11/2011	Genotype/strain: Sea-97
Date received by WRLFMD: 22/06/2012	Sequence filename: TAI11-24.SEQ
Date received for sequencing: 04/07/2012	Date sequence last updated: 12/07/2012
Species: Cattle	No. of Nt determined: 636
Material used: R1B3 BTy1	No. of ambiguities: 0
Region sequenced: VP1	Gene length: 636
RT-PCR primers: A-1C562F/EUR-2B52R	Total no. of comparisons: 1409
A-1C612F/EUR-2B52R	Min. no. of nt for comparison: 600
	Total turn-around time: 27 days
	Sequencing time: 15 days
Comments:	

Most Closely Related Viruses									
Pos.	Virus name	Filename	No. nt comp.	No. nt match.	No. of ambig.	% Id.	% Diff.	Topotype	Strain
1	A/TAI/15/2011	TAI11-15	636	631	0	99.21	0.79	ASIA	Sea-97
2	A/TAI/12/2011	TAI11-12	636	630	0	99.06	0.94	ASIA	Sea-97
3	A/TAI/17/2011	TAI11-17	636	629	0	98.90	1.10	ASIA	Sea-97
4	A/TAI/18/2011	TAI11-18	636	629	0	98.90	1.10	ASIA	Sea-97
5	A/THA 66-1/10* (TRRL)	TAI10-AA	636	629	0	98.90	1.10	ASIA	Sea-97
6	A/TAI/7/2010	TAI10-07	636	628	0	98.74	1.26	ASIA	Sea-97
7	A/THA 67-3/10* (TRRL)	TAI10-AB	636	628	0	98.74	1.26	ASIA	Sea-97
8	A/TAI/8/2010	TAI10-08	636	627	0	98.58	1.42	ASIA	Sea-97
9	A/THA 69-6/10* (TRRL)	TAI10-AC	636	627	0	98.58	1.42	ASIA	Sea-97
10	A/TAI/1/2011	TAI11-01	636	626	0	98.43	1.57	ASIA	Sea-97
Most Closely Related Reference Viruses									
(see http://www.wrlfmd.org/fmd_genotyping/prototypes.htm)									
Pos.	Virus name	Filename	No. nt comp.	No. nt match.	No. of ambig.	% Id.	% Diff.	Topotype	Strain
1	A/TAI/7/2003 (HQ116312)	TAI03-07	636	597	0	93.87	6.13	ASIA	Sea-97
2	A/TAI/2/97 (EF208778)	TAI97-02	636	579	0	91.04	8.96	ASIA	Sea-97
3	A/TAI/118/87* (EF208777)	TAI87-AD	636	553	0	86.95	13.05	ASIA	Thai-87
4	A22/IRQ/64 (AY593763)	IRQ64--A	636	524	0	82.39	17.61	ASIA	A ₂₂
5	A/IRN/2/87 (EF208770)	IRN87-02	633	521	0	82.31	17.69	ASIA	Iran-87
6	A/IRN/1/96 (EF208771)	IRN96-01	635	517	1	81.42	18.58	ASIA	Iran-96
7	A/BAR/6/2008	BAR08-06	636	517	0	81.29	18.71	ASIA	Iran-05 ^{BAR-08}
8	A/IRN/125/2010	IRN10125	636	517	0	81.29	18.71	ASIA	Iran-05 ^{SIS-10}
9	A/IRN/78/2009	IRN09-78	636	517	0	81.29	18.71	ASIA	Iran-05 ^{FAR-09}
10	A/AFG/10/2010	AFG10-10	636	516	0	81.13	18.87	ASIA	Iran-05 ^{HER-10}

nt, nucleotides

*, not a WRLFMD reference number

Assembled with Report Generator v4.1

© Institute for Animal Health (not to be reproduced without permission)

FAO World Reference Laboratory for FMD Genotyping Report

IAH-P-EP-MEG-FOR-005-3

Page 1 of 1

Serotype: A	Report date: 19/07/2012
WRLFMD Ref No: TAI/1/2012	Reported by: N.J. Knowles
Batch No: WRLFMD/2012/00023	Checked by: D.P. King
Sender Ref: A 1/12 R2B3	
Location: Pattani, Thailand	Topotype: ASIA
Date collected: 18/01/2012	Genotype/strain: Sea-97
Date received by WRLFMD: 22/06/2012	Sequence filename: TAI12-01.SEQ
Date received for sequencing: 04/07/2012	Date sequence last updated: 12/07/2012
Species: Cattle	No. of Nt determined: 636
Material used: R2B3 BTy1	No. of ambiguities: 0
Region sequenced: VP1	Gene length: 636
RT-PCR primers: A-1C562F/EUR-2B52R	Total no. of comparisons: 1409
A-1C612F/EUR-2B52R	Min. no. of nt for comparison: 600
	Total turn-around time: 27 days
	Sequencing time: 15 days
Comments:	

Most Closely Related Viruses									
Pos.	Virus name	Filename	No. nt comp.	No. nt match.	No. of ambig.	% Id.	% Diff.	Topotype	Strain
1	A/TAI/2/2012	TAI12-02	636	636	0	100.00	0.00	ASIA	Sea-97
2	A/MAY/3/2012	MAY12-03	633	630	0	99.53	0.47	ASIA	Sea-97
3	A/MAY/4/2012	MAY12-04	633	629	0	99.37	0.63	ASIA	Sea-97
4	A/TAI/8/2010	TAI10-08	636	625	0	98.27	1.73	ASIA	Sea-97
5	A/THA 66-1/10* (TRRL)	TAI10-AA	636	625	0	98.27	1.73	ASIA	Sea-97
6	A/THA 69-6/10* (TRRL)	TAI10-AC	636	625	0	98.27	1.73	ASIA	Sea-97
7	A/TAI/1/2011	TAI11-01	636	624	0	98.11	1.89	ASIA	Sea-97
8	A/TAI/3/2011	TAI11-03	636	624	0	98.11	1.89	ASIA	Sea-97
9	A/TAI/7/2010	TAI10-07	636	624	0	98.11	1.89	ASIA	Sea-97
10	A/THA 67-3/10* (TRRL)	TAI10-AB	636	624	0	98.11	1.89	ASIA	Sea-97
Most Closely Related Reference Viruses									
(see http://www.wrlfmd.org/fmd_genotyping/prototypes.htm)									
Pos.	Virus name	Filename	No. nt comp.	No. nt match.	No. of ambig.	% Id.	% Diff.	Topotype	Strain
1	A/TAI/7/2003 (HQ116312)	TAI03-07	636	595	0	93.55	6.45	ASIA	Sea-97
2	A/TAI/2/97 (EF208778)	TAI97-02	636	576	0	90.57	9.43	ASIA	Sea-97
3	A/TAI/118/87* (EF208777)	TAI87-AD	636	552	0	86.79	13.21	ASIA	Thai-87
4	A22/IRQ/64 (AY593763)	IRQ64--A	636	523	0	82.23	17.77	ASIA	A ₂₂
5	A/IRN/78/2009	IRN09-78	636	519	0	81.60	18.40	ASIA	Iran-05 ^{FAR-09}
6	A/IRN/2/87 (EF208770)	IRN87-02	633	516	0	81.52	18.48	ASIA	Iran-87
7	A/IRN/1/2005 (EF208769)	IRN05-01	636	517	0	81.29	18.71	ASIA	Iran-05
8	A/IRN/125/2010	IRN10125	636	517	0	81.29	18.71	ASIA	Iran-05 ^{SIS-10}
9	A/TUR/1/2008	TUR08-01	636	517	0	81.29	18.71	ASIA	Iran-05 ^{ARD-07}
10	A/TUR/33/2008	TUR08-33	636	517	0	81.29	18.71	ASIA	Iran-05 ^{EZM-07}

nt, nucleotides

*, not a WRLFMD reference number

Assembled with Report Generator v4.1

© Institute for Animal Health (not to be reproduced without permission)

FAO World Reference Laboratory for FMD Genotyping Report

IAH-P-EP-MEG-FOR-005-3

Page 1 of 1

Serotype: A	Report date: 19/07/2012
WRLFMD Ref No: TAI/2/2012	Reported by: N.J. Knowles
Batch No: WRLFMD/2012/00023	Checked by: D.P. King
Sender Ref: A 2/12 R2B3	
Location: Pattani, Thailand	Topotype: ASIA
Date collected: 18/01/2012	Genotype/strain: Sea-97
Date received by WRLFMD: 22/06/2012	Sequence filename: TAI12-02.SEQ
Date received for sequencing: 04/07/2012	Date sequence last updated: 19/07/2012
Species: Cattle	No. of Nt determined: 636
Material used: R2B3 BTy1	No. of ambiguities: 0
Region sequenced: VP1	Gene length: 636
RT-PCR primers: A-1C612F/EUR-2B52R	Total no. of comparisons: 1409
	Min. no. of nt for comparison: 600
	Total turn-around time: 27 days
	Sequencing time: 15 days
Comments:	

Most Closely Related Viruses									
Pos.	Virus name	Filename	No. nt comp.	No. nt match.	No. of ambig.	% Id.	% Diff.	Topotype	Strain
1	A/TAI/1/2012	TAI12-01	636	636	0	100.00	0.00	ASIA	Sea-97
2	A/MAY/3/2012	MAY12-03	633	630	0	99.53	0.47	ASIA	Sea-97
3	A/MAY/4/2012	MAY12-04	633	629	0	99.37	0.63	ASIA	Sea-97
4	A/TAI/8/2010	TAI10-08	636	625	0	98.27	1.73	ASIA	Sea-97
5	A/THA 66-1/10* (TRRL)	TAI10-AA	636	625	0	98.27	1.73	ASIA	Sea-97
6	A/THA 69-6/10* (TRRL)	TAI10-AC	636	625	0	98.27	1.73	ASIA	Sea-97
7	A/TAI/1/2011	TAI11-01	636	624	0	98.11	1.89	ASIA	Sea-97
8	A/TAI/3/2011	TAI11-03	636	624	0	98.11	1.89	ASIA	Sea-97
9	A/TAI/7/2010	TAI10-07	636	624	0	98.11	1.89	ASIA	Sea-97
10	A/THA 67-3/10* (TRRL)	TAI10-AB	636	624	0	98.11	1.89	ASIA	Sea-97
Most Closely Related Reference Viruses									
(see http://www.wrlfmd.org/fmd_genotyping/prototypes.htm)									
Pos.	Virus name	Filename	No. nt comp.	No. nt match.	No. of ambig.	% Id.	% Diff.	Topotype	Strain
1	A/TAI/7/2003 (HQ116312)	TAI03-07	636	595	0	93.55	6.45	ASIA	Sea-97
2	A/TAI/2/97 (EF208778)	TAI97-02	636	576	0	90.57	9.43	ASIA	Sea-97
3	A/TAI/118/87* (EF208777)	TAI87-AD	636	552	0	86.79	13.21	ASIA	Thai-87
4	A22/IRQ/64 (AY593763)	IRQ64--A	636	523	0	82.23	17.77	ASIA	A ₂₂
5	A/IRN/78/2009	IRN09-78	636	519	0	81.60	18.40	ASIA	Iran-05 ^{FAR-09}
6	A/IRN/2/87 (EF208770)	IRN87-02	633	516	0	81.52	18.48	ASIA	Iran-87
7	A/IRN/1/2005 (EF208769)	IRN05-01	636	517	0	81.29	18.71	ASIA	Iran-05
8	A/IRN/125/2010	IRN10125	636	517	0	81.29	18.71	ASIA	Iran-05 ^{SIS-10}
9	A/TUR/1/2008	TUR08-01	636	517	0	81.29	18.71	ASIA	Iran-05 ^{ARD-07}
10	A/TUR/33/2008	TUR08-33	636	517	0	81.29	18.71	ASIA	Iran-05 ^{EZM-07}

nt, nucleotides

*, not a WRLFMD reference number

Assembled with Report Generator v4.1

© Institute for Animal Health (not to be reproduced without permission)

FAO World Reference Laboratory for FMD Genotyping Report

IAH-P-EP-MEG-FOR-005-3

Page 1 of 1

Serotype: A	Report date: 19/07/2012
WRLFMD Ref No: TAI/3/2012	Reported by: N.J. Knowles
Batch No: WRLFMD/2012/00023	Checked by: D.P. King
Sender Ref: A 3/12 R2B3	
Location: Lopburi, Thailand	Topotype: ASIA
Date collected: 26/03/2012	Genotype/strain: Sea-97
Date received by WRLFMD: 22/06/2012	Sequence filename: TAI12-03.SEQ
Date received for sequencing: 04/07/2012	Date sequence last updated: 12/07/2012
Species: Cattle	No. of Nt determined: 636
Material used: R2B3 BTy1	No. of ambiguities: 0
Region sequenced: VP1	Gene length: 636
RT-PCR primers: A-1C562F/EUR-2B52R	Total no. of comparisons: 1409
	Min. no. of nt for comparison: 600
	Total turn-around time: 27 days
	Sequencing time: 15 days
Comments:	

Most Closely Related Viruses									
Pos.	Virus name	Filename	No. nt comp.	No. nt match.	No. of ambig.	% Id.	% Diff.	Topotype	Strain
1	A/TAI/4/2012	TAI12-04	636	636	0	100.00	0.00	ASIA	Sea-97
2	A/TAI 3/12*	TAI12-AA	636	636	0	100.00	0.00	ASIA	Sea-97
3	A/TAI 4/12*	TAI12-AB	636	636	0	100.00	0.00	ASIA	Sea-97
4	A/MAY/5/2012	MAY12-05	633	630	0	99.53	0.47	ASIA	Sea-97
5	A/TAI/5/2012	TAI12-05	636	633	0	99.53	0.47	ASIA	Sea-97
6	A/TAI/7/2012	TAI12-07	636	633	0	99.53	0.47	ASIA	Sea-97
7	A/TAI/9/2012	TAI12-09	636	633	0	99.53	0.47	ASIA	Sea-97
8	A/MAY/20/2011	MAY11-20	636	632	0	99.37	0.63	ASIA	Sea-97
9	A/TAI/8/2012	TAI12-08	636	632	0	99.37	0.63	ASIA	Sea-97
10	A/TAI/12/2012	TAI12-12	636	631	0	99.21	0.79	ASIA	Sea-97
Most Closely Related Reference Viruses									
(see http://www.wrlfmd.org/fmd_genotyping/prototypes.htm)									
Pos.	Virus name	Filename	No. nt comp.	No. nt match.	No. of ambig.	% Id.	% Diff.	Topotype	Strain
1	A/TAI/7/2003 (HQ116312)	TAI03-07	636	602	0	94.65	5.35	ASIA	Sea-97
2	A/TAI/2/97 (EF208778)	TAI97-02	636	582	0	91.51	8.49	ASIA	Sea-97
3	A/TAI/118/87* (EF208777)	TAI87-AD	636	558	0	87.74	12.26	ASIA	Thai-87
4	A22/IRQ/64 (AY593763)	IRQ64--A	636	527	0	82.86	17.14	ASIA	A ₂₂
5	A15/Bangkok/TAI/60 (AY593755)	TAI60--D	636	524	0	82.39	17.61	ASIA	A15
6	A/IRN/2/87 (EF208770)	IRN87-02	633	520	0	82.15	17.85	ASIA	Iran-87
7	A/IRN/78/2009	IRN09-78	636	521	0	81.92	18.08	ASIA	Iran-05 ^{FAR-09}
8	A/AFG/10/2010	AFG10-10	636	520	0	81.76	18.24	ASIA	Iran-05 ^{HER-10}
9	A/BAR/6/2008	BAR08-06	636	520	0	81.76	18.24	ASIA	Iran-05 ^{BAR-08}
10	A/IRN/1/96 (EF208771)	IRN96-01	635	519	1	81.73	18.27	ASIA	Iran-96

nt, nucleotides

*, not a WRLFMD reference number

Assembled with Report Generator v4.1

© Institute for Animal Health (not to be reproduced without permission)

FAO World Reference Laboratory for FMD Genotyping Report

IAH-P-EP-MEG-FOR-005-3

Page 1 of 1

Serotype: A	Report date: 19/07/2012
WRLFMD Ref No: TAI/4/2012	Reported by: N.J. Knowles
Batch No: WRLFMD/2012/00023	Checked by: D.P. King
Sender Ref: A 4/12 R3B3	
Location: Lopburi, Thailand	Topotype: ASIA
Date collected: 26/03/2012	Genotype/strain: Sea-97
Date received by WRLFMD: 22/06/2012	Sequence filename: TAI12-04.SEQ
Date received for sequencing: 04/07/2012	Date sequence last updated: 12/07/2012
Species: Cattle	No. of Nt determined: 636
Material used: R3B3 BTy1	No. of ambiguities: 0
Region sequenced: VP1	Gene length: 636
RT-PCR primers: A-1C562F/EUR-2B52R	Total no. of comparisons: 1409
A-1C612F/EUR-2B52R	Min. no. of nt for comparison: 600
	Total turn-around time: 27 days
	Sequencing time: 15 days
Comments:	

Most Closely Related Viruses									
Pos.	Virus name	Filename	No. nt comp.	No. nt match.	No. of ambig.	% Id.	% Diff.	Topotype	Strain
1	A/TAI/3/2012	TAI12-03	636	636	0	100.00	0.00	ASIA	Sea-97
2	A/TAI 3/12*	TAI12-AA	636	636	0	100.00	0.00	ASIA	Sea-97
3	A/TAI 4/12*	TAI12-AB	636	636	0	100.00	0.00	ASIA	Sea-97
4	A/MAY/5/2012	MAY12-05	633	630	0	99.53	0.47	ASIA	Sea-97
5	A/TAI/5/2012	TAI12-05	636	633	0	99.53	0.47	ASIA	Sea-97
6	A/TAI/7/2012	TAI12-07	636	633	0	99.53	0.47	ASIA	Sea-97
7	A/TAI/9/2012	TAI12-09	636	633	0	99.53	0.47	ASIA	Sea-97
8	A/MAY/20/2011	MAY11-20	636	632	0	99.37	0.63	ASIA	Sea-97
9	A/TAI/8/2012	TAI12-08	636	632	0	99.37	0.63	ASIA	Sea-97
10	A/TAI/12/2012	TAI12-12	636	631	0	99.21	0.79	ASIA	Sea-97
Most Closely Related Reference Viruses									
(see http://www.wrlfmd.org/fmd_genotyping/prototypes.htm)									
Pos.	Virus name	Filename	No. nt comp.	No. nt match.	No. of ambig.	% Id.	% Diff.	Topotype	Strain
1	A/TAI/7/2003 (HQ116312)	TAI03-07	636	602	0	94.65	5.35	ASIA	Sea-97
2	A/TAI/2/97 (EF208778)	TAI97-02	636	582	0	91.51	8.49	ASIA	Sea-97
3	A/TAI/118/87* (EF208777)	TAI87-AD	636	558	0	87.74	12.26	ASIA	Thai-87
4	A22/IRQ/64 (AY593763)	IRQ64--A	636	527	0	82.86	17.14	ASIA	A ₂₂
5	A15/Bangkok/TAI/60 (AY593755)	TAI60--D	636	524	0	82.39	17.61	ASIA	A15
6	A/IRN/2/87 (EF208770)	IRN87-02	633	520	0	82.15	17.85	ASIA	Iran-87
7	A/IRN/78/2009	IRN09-78	636	521	0	81.92	18.08	ASIA	Iran-05 ^{FAR-09}
8	A/AFG/10/2010	AFG10-10	636	520	0	81.76	18.24	ASIA	Iran-05 ^{HER-10}
9	A/BAR/6/2008	BAR08-06	636	520	0	81.76	18.24	ASIA	Iran-05 ^{BAR-08}
10	A/IRN/1/96 (EF208771)	IRN96-01	635	519	1	81.73	18.27	ASIA	Iran-96

nt, nucleotides

*, not a WRLFMD reference number

Assembled with Report Generator v4.1

© Institute for Animal Health (not to be reproduced without permission)

FAO World Reference Laboratory for FMD Genotyping Report

IAH-P-EP-MEG-FOR-005-3

Page 1 of 1

Serotype: A	Report date: 19/07/2012
WRLFMD Ref No: TAI/5/2012	Reported by: N.J. Knowles
Batch No: WRLFMD/2012/00023	Checked by: D.P. King
Sender Ref: A 6/12 R1B3	
Location: Ratchaburi, Thailand	Topotype: ASIA
Date collected: 26/03/2012	Genotype/strain: Sea-97
Date received by WRLFMD: 22/06/2012	Sequence filename: TAI12-05.SEQ
Date received for sequencing: 04/07/2012	Date sequence last updated: 16/07/2012
Species: Cattle	No. of Nt determined: 636
Material used: R1B3 BTy1	No. of ambiguities: 0
Region sequenced: VP1	Gene length: 636
RT-PCR primers: A-1C562F/EUR-2B52R	Total no. of comparisons: 1409
A-1C612F/EUR-2B52R	Min. no. of nt for comparison: 600
	Total turn-around time: 27 days
	Sequencing time: 15 days
Comments:	

Most Closely Related Viruses									
Pos.	Virus name	Filename	No. nt comp.	No. nt match.	No. of ambig.	% Id.	% Diff.	Topotype	Strain
1	A/TAI/8/2012	TAI12-08	636	635	0	99.84	0.16	ASIA	Sea-97
2	A/TAI/6/2012	TAI12-06	636	634	0	99.69	0.31	ASIA	Sea-97
3	A/TAI/3/2012	TAI12-03	636	633	0	99.53	0.47	ASIA	Sea-97
4	A/TAI/4/2012	TAI12-04	636	633	0	99.53	0.47	ASIA	Sea-97
5	A/TAI 3/12*	TAI12-AA	636	633	0	99.53	0.47	ASIA	Sea-97
6	A/TAI 4/12*	TAI12-AB	636	633	0	99.53	0.47	ASIA	Sea-97
7	A/TAI/7/2012	TAI12-07	636	630	0	99.06	0.94	ASIA	Sea-97
8	A/TAI/9/2012	TAI12-09	636	630	0	99.06	0.94	ASIA	Sea-97
9	A/MAY/5/2012	MAY12-05	633	627	0	99.05	0.95	ASIA	Sea-97
10	A/MAY/20/2011	MAY11-20	636	629	0	98.90	1.10	ASIA	Sea-97
Most Closely Related Reference Viruses									
(see http://www.wrlfmd.org/fmd_genotyping/prototypes.htm)									
Pos.	Virus name	Filename	No. nt comp.	No. nt match.	No. of ambig.	% Id.	% Diff.	Topotype	Strain
1	A/TAI/7/2003 (HQ116312)	TAI03-07	636	601	0	94.50	5.50	ASIA	Sea-97
2	A/TAI/2/97 (EF208778)	TAI97-02	636	581	0	91.35	8.65	ASIA	Sea-97
3	A/TAI/118/87* (EF208777)	TAI87-AD	636	557	0	87.58	12.42	ASIA	Thai-87
4	A22/IRQ/64 (AY593763)	IRQ64--A	636	526	0	82.70	17.30	ASIA	A ₂₂
5	A/IRN/1/96 (EF208771)	IRN96-01	635	522	1	82.20	17.80	ASIA	Iran-96
6	A/IRN/2/87 (EF208770)	IRN87-02	633	519	0	81.99	18.01	ASIA	Iran-87
7	A15/Bangkok/TAI/60 (AY593755)	TAI60--D	636	521	0	81.92	18.08	ASIA	A15
8	A/IRN/78/2009	IRN09-78	636	520	0	81.76	18.24	ASIA	Iran-05 ^{FAR-09}
9	A/AFG/10/2010	AFG10-10	636	519	0	81.60	18.40	ASIA	Iran-05 ^{HER-10}
10	A/BAR/6/2008	BAR08-06	636	519	0	81.60	18.40	ASIA	Iran-05 ^{BAR-08}

nt, nucleotides

*, not a WRLFMD reference number

Assembled with Report Generator v4.1

© Institute for Animal Health (not to be reproduced without permission)

FAO World Reference Laboratory for FMD Genotyping Report

IAH-P-EP-MEG-FOR-005-3

Page 1 of 1

Serotype: A	Report date: 19/07/2012
WRLFMD Ref No: TAI/6/2012	Reported by: N.J. Knowles
Batch No: WRLFMD/2012/00023	Checked by: D.P. King
Sender Ref: A 14-1/12 R2	
Location: Ratchaburi, Thailand	Topotype: ASIA
Date collected: 30/04/2012	Genotype/strain: Sea-97
Date received by WRLFMD: 22/06/2012	Sequence filename: TAI12-06.SEQ
Date received for sequencing: 04/07/2012	Date sequence last updated: 16/07/2012
Species: Cattle	No. of Nt determined: 636
Material used: R2 BTy1	No. of ambiguities: 0
Region sequenced: VP1	Gene length: 636
RT-PCR primers: A-1C562F/EUR-2B52R	Total no. of comparisons: 1409
A-1C612F/EUR-2B52R	Min. no. of nt for comparison: 600
	Total turn-around time: 27 days
	Sequencing time: 15 days
Comments:	

Most Closely Related Viruses									
Pos.	Virus name	Filename	No. nt comp.	No. nt match.	No. of ambig.	% Id.	% Diff.	Topotype	Strain
1	A/TAI/5/2012	TAI12-05	636	634	0	99.69	0.31	ASIA	Sea-97
2	A/TAI/8/2012	TAI12-08	636	633	0	99.53	0.47	ASIA	Sea-97
3	A/TAI/3/2012	TAI12-03	636	631	0	99.21	0.79	ASIA	Sea-97
4	A/TAI/4/2012	TAI12-04	636	631	0	99.21	0.79	ASIA	Sea-97
5	A/TAI 3/12*	TAI12-AA	636	631	0	99.21	0.79	ASIA	Sea-97
6	A/TAI 4/12*	TAI12-AB	636	631	0	99.21	0.79	ASIA	Sea-97
7	A/MAY/5/2012	MAY12-05	633	627	0	99.05	0.95	ASIA	Sea-97
8	A/TAI/7/2012	TAI12-07	636	628	0	98.74	1.26	ASIA	Sea-97
9	A/TAI/9/2012	TAI12-09	636	628	0	98.74	1.26	ASIA	Sea-97
10	A/MAY/20/2011	MAY11-20	636	627	0	98.58	1.42	ASIA	Sea-97
Most Closely Related Reference Viruses									
(see http://www.wrlfmd.org/fmd_genotyping/prototypes.htm)									
Pos.	Virus name	Filename	No. nt comp.	No. nt match.	No. of ambig.	% Id.	% Diff.	Topotype	Strain
1	A/TAI/7/2003 (HQ116312)	TAI03-07	636	599	0	94.18	5.82	ASIA	Sea-97
2	A/TAI/2/97 (EF208778)	TAI97-02	636	579	0	91.04	8.96	ASIA	Sea-97
3	A/TAI/118/87* (EF208777)	TAI87-AD	636	557	0	87.58	12.42	ASIA	Thai-87
4	A22/IRQ/64 (AY593763)	IRQ64--A	636	524	0	82.39	17.61	ASIA	A ₂₂
5	A/IRN/2/87 (EF208770)	IRN87-02	633	519	0	81.99	18.01	ASIA	Iran-87
6	A/IRN/1/96 (EF208771)	IRN96-01	635	520	1	81.89	18.11	ASIA	Iran-96
7	A/IRN/78/2009	IRN09-78	636	519	0	81.60	18.40	ASIA	Iran-05 ^{FAR-09}
8	A15/Bangkok/TAI/60 (AY593755)	TAI60--D	636	519	0	81.60	18.40	ASIA	A15
9	A/AFG/10/2010	AFG10-10	636	518	0	81.45	18.55	ASIA	Iran-05 ^{HER-10}
10	A/BAR/6/2008	BAR08-06	636	518	0	81.45	18.55	ASIA	Iran-05 ^{BAR-08}

nt, nucleotides

*, not a WRLFMD reference number

Assembled with Report Generator v4.1

© Institute for Animal Health (not to be reproduced without permission)

FAO World Reference Laboratory for FMD Genotyping Report

IAH-P-EP-MEG-FOR-005-3

Page 1 of 1

Serotype: A	Report date: 19/07/2012
WRLFMD Ref No: TAI/7/2012	Reported by: N.J. Knowles
Batch No: WRLFMD/2012/00023	Checked by: D.P. King
Sender Ref: A 11-2/12 R2B2	
Location: Kanjanaburi, Thailand	Topotype: ASIA
Date collected: 02/05/2012	Genotype/strain: Sea-97
Date received by WRLFMD: 22/06/2012	Sequence filename: TAI12-07.SEQ
Date received for sequencing: 04/07/2012	Date sequence last updated: 12/07/2012
Species: Cattle	No. of Nt determined: 636
Material used: R2B2 BTy1	No. of ambiguities: 0
Region sequenced: VP1	Gene length: 636
RT-PCR primers: A-1C562F/EUR-2B52R	Total no. of comparisons: 1409
A-1C612F/EUR-2B52R	Min. no. of nt for comparison: 600
	Total turn-around time: 27 days
	Sequencing time: 15 days
Comments:	

Most Closely Related Viruses									
Pos.	Virus name	Filename	No. nt comp.	No. nt match.	No. of ambig.	% Id.	% Diff.	Topotype	Strain
1	A/TAI/12/2012	TAI12-12	636	634	0	99.69	0.31	ASIA	Sea-97
2	A/TAI/3/2012	TAI12-03	636	633	0	99.53	0.47	ASIA	Sea-97
3	A/TAI/4/2012	TAI12-04	636	633	0	99.53	0.47	ASIA	Sea-97
4	A/TAI 3/12*	TAI12-AA	636	633	0	99.53	0.47	ASIA	Sea-97
5	A/TAI 4/12*	TAI12-AB	636	633	0	99.53	0.47	ASIA	Sea-97
6	A/TAI/5/2012	TAI12-05	636	630	0	99.06	0.94	ASIA	Sea-97
7	A/TAI/9/2012	TAI12-09	636	630	0	99.06	0.94	ASIA	Sea-97
8	A/MAY/5/2012	MAY12-05	633	627	0	99.05	0.95	ASIA	Sea-97
9	A/MAY/20/2011	MAY11-20	636	629	0	98.90	1.10	ASIA	Sea-97
10	A/TAI/8/2012	TAI12-08	636	629	0	98.90	1.10	ASIA	Sea-97
Most Closely Related Reference Viruses									
(see http://www.wrlfmd.org/fmd_genotyping/prototypes.htm)									
Pos.	Virus name	Filename	No. nt comp.	No. nt match.	No. of ambig.	% Id.	% Diff.	Topotype	Strain
1	A/TAI/7/2003 (HQ116312)	TAI03-07	636	599	0	94.18	5.82	ASIA	Sea-97
2	A/TAI/2/97 (EF208778)	TAI97-02	636	579	0	91.04	8.96	ASIA	Sea-97
3	A/TAI/118/87* (EF208777)	TAI87-AD	636	555	0	87.26	12.74	ASIA	Thai-87
4	A22/IRQ/64 (AY593763)	IRQ64--A	636	527	0	82.86	17.14	ASIA	A ₂₂
5	A15/Bangkok/TAI/60 (AY593755)	TAI60--D	636	524	0	82.39	17.61	ASIA	A15
6	A/IRN/2/87 (EF208770)	IRN87-02	633	519	0	81.99	18.01	ASIA	Iran-87
7	A/IRN/78/2009	IRN09-78	636	519	0	81.60	18.40	ASIA	Iran-05 ^{FAR-09}
8	A/IRN/1/96 (EF208771)	IRN96-01	635	518	1	81.57	18.43	ASIA	Iran-96
9	A/IRN/1/2005 (EF208769)	IRN05-01	636	518	0	81.45	18.55	ASIA	Iran-05
10	A/TUR/33/2008	TUR08-33	636	518	0	81.45	18.55	ASIA	Iran-05 ^{EZM-07}

nt, nucleotides

*, not a WRLFMD reference number

Assembled with Report Generator v4.1

© Institute for Animal Health (not to be reproduced without permission)

FAO World Reference Laboratory for FMD Genotyping Report

IAH-P-EP-MEG-FOR-005-3

Page 1 of 1

Serotype: A	Report date: 19/07/2012
WRLFMD Ref No: TAI/8/2012	Reported by: N.J. Knowles
Batch No: WRLFMD/2012/00023	Checked by: D.P. King
Sender Ref: A 16-2/12 R1B3	
Location: Ratchaburi, Thailand	Topotype: ASIA
Date collected: 04/05/2012	Genotype/strain: Sea-97
Date received by WRLFMD: 22/06/2012	Sequence filename: TAI12-08.SEQ
Date received for sequencing: 04/07/2012	Date sequence last updated: 12/07/2012
Species: Cattle	No. of Nt determined: 636
Material used: R1B3 BTy1	No. of ambiguities: 0
Region sequenced: VP1	Gene length: 636
RT-PCR primers: A-1C562F/EUR-2B52R	Total no. of comparisons: 1409
A-1C612F/EUR-2B52R	Min. no. of nt for comparison: 600
	Total turn-around time: 27 days
	Sequencing time: 15 days
Comments:	

Most Closely Related Viruses									
Pos.	Virus name	Filename	No. nt comp.	No. nt match.	No. of ambig.	% Id.	% Diff.	Topotype	Strain
1	A/TAI/5/2012	TAI12-05	636	635	0	99.84	0.16	ASIA	Sea-97
2	A/TAI/6/2012	TAI12-06	636	633	0	99.53	0.47	ASIA	Sea-97
3	A/TAI/3/2012	TAI12-03	636	632	0	99.37	0.63	ASIA	Sea-97
4	A/TAI/4/2012	TAI12-04	636	632	0	99.37	0.63	ASIA	Sea-97
5	A/TAI 3/12*	TAI12-AA	636	632	0	99.37	0.63	ASIA	Sea-97
6	A/TAI 4/12*	TAI12-AB	636	632	0	99.37	0.63	ASIA	Sea-97
7	A/TAI/7/2012	TAI12-07	636	629	0	98.90	1.10	ASIA	Sea-97
8	A/TAI/9/2012	TAI12-09	636	629	0	98.90	1.10	ASIA	Sea-97
9	A/MAY/5/2012	MAY12-05	633	626	0	98.89	1.11	ASIA	Sea-97
10	A/MAY/20/2011	MAY11-20	636	628	0	98.74	1.26	ASIA	Sea-97
Most Closely Related Reference Viruses									
(see http://www.wrlfmd.org/fmd_genotyping/prototypes.htm)									
Pos.	Virus name	Filename	No. nt comp.	No. nt match.	No. of ambig.	% Id.	% Diff.	Topotype	Strain
1	A/TAI/7/2003 (HQ116312)	TAI03-07	636	600	0	94.34	5.66	ASIA	Sea-97
2	A/TAI/2/97 (EF208778)	TAI97-02	636	580	0	91.19	8.81	ASIA	Sea-97
3	A/TAI/118/87* (EF208777)	TAI87-AD	636	556	0	87.42	12.58	ASIA	Thai-87
4	A22/IRQ/64 (AY593763)	IRQ64--A	636	526	0	82.70	17.30	ASIA	A ₂₂
5	A/IRN/1/96 (EF208771)	IRN96-01	635	523	1	82.36	17.64	ASIA	Iran-96
6	A15/Bangkok/TAI/60 (AY593755)	TAI60--D	636	522	0	82.08	17.92	ASIA	A15
7	A/IRN/2/87 (EF208770)	IRN87-02	633	519	0	81.99	18.01	ASIA	Iran-87
8	A/IRN/78/2009	IRN09-78	636	520	0	81.76	18.24	ASIA	Iran-05 ^{FAR-09}
9	A/AFG/10/2010	AFG10-10	636	519	0	81.60	18.40	ASIA	Iran-05 ^{HER-10}
10	A/BAR/6/2008	BAR08-06	636	519	0	81.60	18.40	ASIA	Iran-05 ^{BAR-08}

nt, nucleotides

*, not a WRLFMD reference number

Assembled with Report Generator v4.1

© Institute for Animal Health (not to be reproduced without permission)

FAO World Reference Laboratory for FMD Genotyping Report

IAH-P-EP-MEG-FOR-005-3

Page 1 of 1

Serotype: A	Report date: 19/07/2012
WRLFMD Ref No: TAI/9/2012	Reported by: N.J. Knowles
Batch No: WRLFMD/2012/00023	Checked by: D.P. King
Sender Ref: A 15/12 R1B3	
Location: Mukdahan, Thailand	Topotype: ASIA
Date collected: 08/05/2012	Genotype/strain: Sea-97
Date received by WRLFMD: 22/06/2012	Sequence filename: TAI12-09.SEQ
Date received for sequencing: 04/07/2012	Date sequence last updated: 12/07/2012
Species: Cattle	No. of Nt determined: 636
Material used: R1B3 BTy1	No. of ambiguities: 0
Region sequenced: VP1	Gene length: 636
RT-PCR primers: A-1C562F/EUR-2B52R	Total no. of comparisons: 1409
A-1C612F/EUR-2B52R	Min. no. of nt for comparison: 600
	Total turn-around time: 27 days
	Sequencing time: 15 days
Comments:	

Most Closely Related Viruses									
Pos.	Virus name	Filename	No. nt comp.	No. nt match.	No. of ambig.	% Id.	% Diff.	Topotype	Strain
1	A/TAI/3/2012	TAI12-03	636	633	0	99.53	0.47	ASIA	Sea-97
2	A/TAI/4/2012	TAI12-04	636	633	0	99.53	0.47	ASIA	Sea-97
3	A/TAI 3/12*	TAI12-AA	636	633	0	99.53	0.47	ASIA	Sea-97
4	A/TAI 4/12*	TAI12-AB	636	633	0	99.53	0.47	ASIA	Sea-97
5	A/MAY/20/2011	MAY11-20	636	631	0	99.21	0.79	ASIA	Sea-97
6	A/MAY/5/2012	MAY12-05	633	628	0	99.21	0.79	ASIA	Sea-97
7	A/TAI/5/2012	TAI12-05	636	630	0	99.06	0.94	ASIA	Sea-97
8	A/TAI/7/2012	TAI12-07	636	630	0	99.06	0.94	ASIA	Sea-97
9	A/TAI/8/2012	TAI12-08	636	629	0	98.90	1.10	ASIA	Sea-97
10	A/TAI/12/2012	TAI12-12	636	628	0	98.74	1.26	ASIA	Sea-97
Most Closely Related Reference Viruses									
(see http://www.wrlfmd.org/fmd_genotyping/prototypes.htm)									
Pos.	Virus name	Filename	No. nt comp.	No. nt match.	No. of ambig.	% Id.	% Diff.	Topotype	Strain
1	A/TAI/7/2003 (HQ116312)	TAI03-07	636	601	0	94.50	5.50	ASIA	Sea-97
2	A/TAI/2/97 (EF208778)	TAI97-02	636	581	0	91.35	8.65	ASIA	Sea-97
3	A/TAI/118/87* (EF208777)	TAI87-AD	636	561	0	88.21	11.79	ASIA	Thai-87
4	A22/IRQ/64 (AY593763)	IRQ64--A	636	530	0	83.33	16.67	ASIA	A ₂₂
5	A/IRN/2/87 (EF208770)	IRN87-02	633	522	0	82.46	17.54	ASIA	Iran-87
6	A15/Bangkok/TAI/60 (AY593755)	TAI60--D	636	524	0	82.39	17.61	ASIA	A15
7	A/IRN/1/2005 (EF208769)	IRN05-01	636	522	0	82.08	17.92	ASIA	Iran-05
8	A/TUR/1/2008	TUR08-01	636	522	0	82.08	17.92	ASIA	Iran-05 ^{ARD-07}
9	A/TUR/33/2008	TUR08-33	636	522	0	82.08	17.92	ASIA	Iran-05 ^{EZM-07}
10	A/AFG/10/2010	AFG10-10	636	521	0	81.92	18.08	ASIA	Iran-05 ^{HER-10}

nt, nucleotides

*, not a WRLFMD reference number

Assembled with Report Generator v4.1

© Institute for Animal Health (not to be reproduced without permission)

FAO World Reference Laboratory for FMD Genotyping Report

IAH-P-EP-MEG-FOR-005-3

Page 1 of 1

Serotype: A	Report date: 19/07/2012
WRLFMD Ref No: TAI/10/2012	Reported by: N.J. Knowles
Batch No: WRLFMD/2012/00023	Checked by: D.P. King
Sender Ref: A 17-1/12 R2B2	
Location: Kanjanaburi, Thailand	Topotype: ASIA
Date collected: 18/05/2012	Genotype/strain: Sea-97
Date received by WRLFMD: 22/06/2012	Sequence filename: TAI12-10.SEQ
Date received for sequencing: 04/07/2012	Date sequence last updated: 16/07/2012
Species: Cattle	No. of Nt determined: 636
Material used: R2B2 BTy1	No. of ambiguities: 0
Region sequenced: VP1	Gene length: 636
RT-PCR primers: A-1C562F/EUR-2B52R	Total no. of comparisons: 1409
A-1C612F/EUR-2B52R	Min. no. of nt for comparison: 600
	Total turn-around time: 27 days
	Sequencing time: 15 days
Comments:	

Most Closely Related Viruses									
Pos.	Virus name	Filename	No. nt comp.	No. nt match.	No. of ambig.	% Id.	% Diff.	Topotype	Strain
1	A/THA 66-1/10* (TRRL)	TAI10-AA	636	622	0	97.80	2.20	ASIA	Sea-97
2	A/THA 69-6/10* (TRRL)	TAI10-AC	636	622	0	97.80	2.20	ASIA	Sea-97
3	A/TAI/7/2010	TAI10-07	636	621	0	97.64	2.36	ASIA	Sea-97
4	A/THA 67-3/10* (TRRL)	TAI10-AB	636	621	0	97.64	2.36	ASIA	Sea-97
5	A/TAI/1/2011	TAI11-01	636	620	0	97.48	2.52	ASIA	Sea-97
6	A/TAI/8/2010	TAI10-08	636	620	0	97.48	2.52	ASIA	Sea-97
7	A/TAI/3/2011	TAI11-03	636	619	0	97.33	2.67	ASIA	Sea-97
8	A/MAY/4/2011	MAY11-04	636	618	0	97.17	2.83	ASIA	Sea-97
9	A/TAI/3/2012	TAI12-03	636	618	0	97.17	2.83	ASIA	Sea-97
10	A/TAI/4/2012	TAI12-04	636	618	0	97.17	2.83	ASIA	Sea-97
Most Closely Related Reference Viruses									
(see http://www.wrlfmd.org/fmd_genotyping/prototypes.htm)									
Pos.	Virus name	Filename	No. nt comp.	No. nt match.	No. of ambig.	% Id.	% Diff.	Topotype	Strain
1	A/TAI/7/2003 (HQ116312)	TAI03-07	636	591	0	92.92	7.08	ASIA	Sea-97
2	A/TAI/2/97 (EF208778)	TAI97-02	636	576	0	90.57	9.43	ASIA	Sea-97
3	A/TAI/118/87* (EF208777)	TAI87-AD	636	553	0	86.95	13.05	ASIA	Thai-87
4	A/IRN/2/87 (EF208770)	IRN87-02	633	524	0	82.78	17.22	ASIA	Iran-87
5	A22/IRQ/64 (AY593763)	IRQ64--A	636	526	0	82.70	17.30	ASIA	A ₂₂
6	A/IRN/125/2010	IRN10125	636	523	0	82.23	17.77	ASIA	Iran-05 ^{SIS-10}
7	A15/Bangkok/TAI/60 (AY593755)	TAI60--D	636	523	0	82.23	17.77	ASIA	A15
8	A/IRN/78/2009	IRN09-78	636	522	0	82.08	17.92	ASIA	Iran-05 ^{FAR-09}
9	A/AFG/10/2010	AFG10-10	636	519	0	81.60	18.40	ASIA	Iran-05 ^{HER-10}
10	A/TUR/1/2008	TUR08-01	636	519	0	81.60	18.40	ASIA	Iran-05 ^{ARD-07}

nt, nucleotides

*, not a WRLFMD reference number

Assembled with Report Generator v4.1

© Institute for Animal Health (not to be reproduced without permission)

FAO World Reference Laboratory for FMD Genotyping Report

IAH-P-EP-MEG-FOR-005-3

Page 1 of 1

Serotype: A	Report date: 19/07/2012
WRLFMD Ref No: TAI/12/2012	Reported by: N.J. Knowles
Batch No: WRLFMD/2012/00023	Checked by: D.P. King
Sender Ref: A 12-1/12 R2B1	
Location: Kanjanaburi, Thailand	Topotype: ASIA
Date collected: 30/04/2012	Genotype/strain: Sea-97
Date received by WRLFMD: 22/06/2012	Sequence filename: TAI12-12.SEQ
Date received for sequencing: 04/07/2012	Date sequence last updated: 16/07/2012
Species: Cattle	No. of Nt determined: 636
Material used: R2B1 BTy1	No. of ambiguities: 0
Region sequenced: VP1	Gene length: 636
RT-PCR primers: A-1C562F/EUR-2B52R	Total no. of comparisons: 1409
A-1C612F/EUR-2B52R	Min. no. of nt for comparison: 600
	Total turn-around time: 27 days
	Sequencing time: 15 days
Comments:	

Most Closely Related Viruses									
Pos.	Virus name	Filename	No. nt comp.	No. nt match.	No. of ambig.	% Id.	% Diff.	Topotype	Strain
1	A/TAI/7/2012	TAI12-07	636	634	0	99.69	0.31	ASIA	Sea-97
2	A/TAI/3/2012	TAI12-03	636	631	0	99.21	0.79	ASIA	Sea-97
3	A/TAI/4/2012	TAI12-04	636	631	0	99.21	0.79	ASIA	Sea-97
4	A/TAI 3/12*	TAI12-AA	636	631	0	99.21	0.79	ASIA	Sea-97
5	A/TAI 4/12*	TAI12-AB	636	631	0	99.21	0.79	ASIA	Sea-97
6	A/MAY/5/2012	MAY12-05	633	625	0	98.74	1.26	ASIA	Sea-97
7	A/TAI/5/2012	TAI12-05	636	628	0	98.74	1.26	ASIA	Sea-97
8	A/TAI/9/2012	TAI12-09	636	628	0	98.74	1.26	ASIA	Sea-97
9	A/MAY/20/2011	MAY11-20	636	627	0	98.58	1.42	ASIA	Sea-97
10	A/TAI/8/2012	TAI12-08	636	627	0	98.58	1.42	ASIA	Sea-97
Most Closely Related Reference Viruses									
(see http://www.wrlfmd.org/fmd_genotyping/prototypes.htm)									
Pos.	Virus name	Filename	No. nt comp.	No. nt match.	No. of ambig.	% Id.	% Diff.	Topotype	Strain
1	A/TAI/7/2003 (HQ116312)	TAI03-07	636	597	0	93.87	6.13	ASIA	Sea-97
2	A/TAI/2/97 (EF208778)	TAI97-02	636	577	0	90.72	9.28	ASIA	Sea-97
3	A/TAI/118/87* (EF208777)	TAI87-AD	636	554	0	87.11	12.89	ASIA	Thai-87
4	A22/IRQ/64 (AY593763)	IRQ64--A	636	526	0	82.70	17.30	ASIA	A ₂₂
5	A15/Bangkok/TAI/60 (AY593755)	TAI60--D	636	522	0	82.08	17.92	ASIA	A15
6	A/IRN/2/87 (EF208770)	IRN87-02	633	517	0	81.67	18.33	ASIA	Iran-87
7	A/IRN/78/2009	IRN09-78	636	519	0	81.60	18.40	ASIA	Iran-05 ^{FAR-09}
8	A/IRN/1/2005 (EF208769)	IRN05-01	636	518	0	81.45	18.55	ASIA	Iran-05
9	A/IRN/1/96 (EF208771)	IRN96-01	635	517	1	81.42	18.58	ASIA	Iran-96
10	A/AFG/10/2010	AFG10-10	636	517	0	81.29	18.71	ASIA	Iran-05 ^{HER-10}

nt, nucleotides

*, not a WRLFMD reference number

Assembled with Report Generator v4.1

© Institute for Animal Health (not to be reproduced without permission)

Report on FMDV A in Thailand in 2011-2012

Batch: WRLFMD/2012/00023

◆ indicates viruses in this batch

Software: MEGA 5.0

Analysis

----- Phylogeny Reconstruction

Scope ----- All Selected Taxa

Statistical Method ----- Neighbor-joining

Phylogeny Test

----- Bootstrap method

No. of Bootstrap Replications ----- 1000

Substitution Model

----- Nucleotide

Model/Method ----- Kimura 2-parameter model

Substitutions to Include ----- d: Transitions + Transversions

Rates and Patterns

----- Uniform rates

Pattern among Lineages ----- Same (Homogeneous)

Data Subset to Use

----- Pairwise deletion

Codons Included ----- 1st+2nd+3rd+Non-Coding

No. of Sites : 639

No Of Bootstrap Reps = 1000

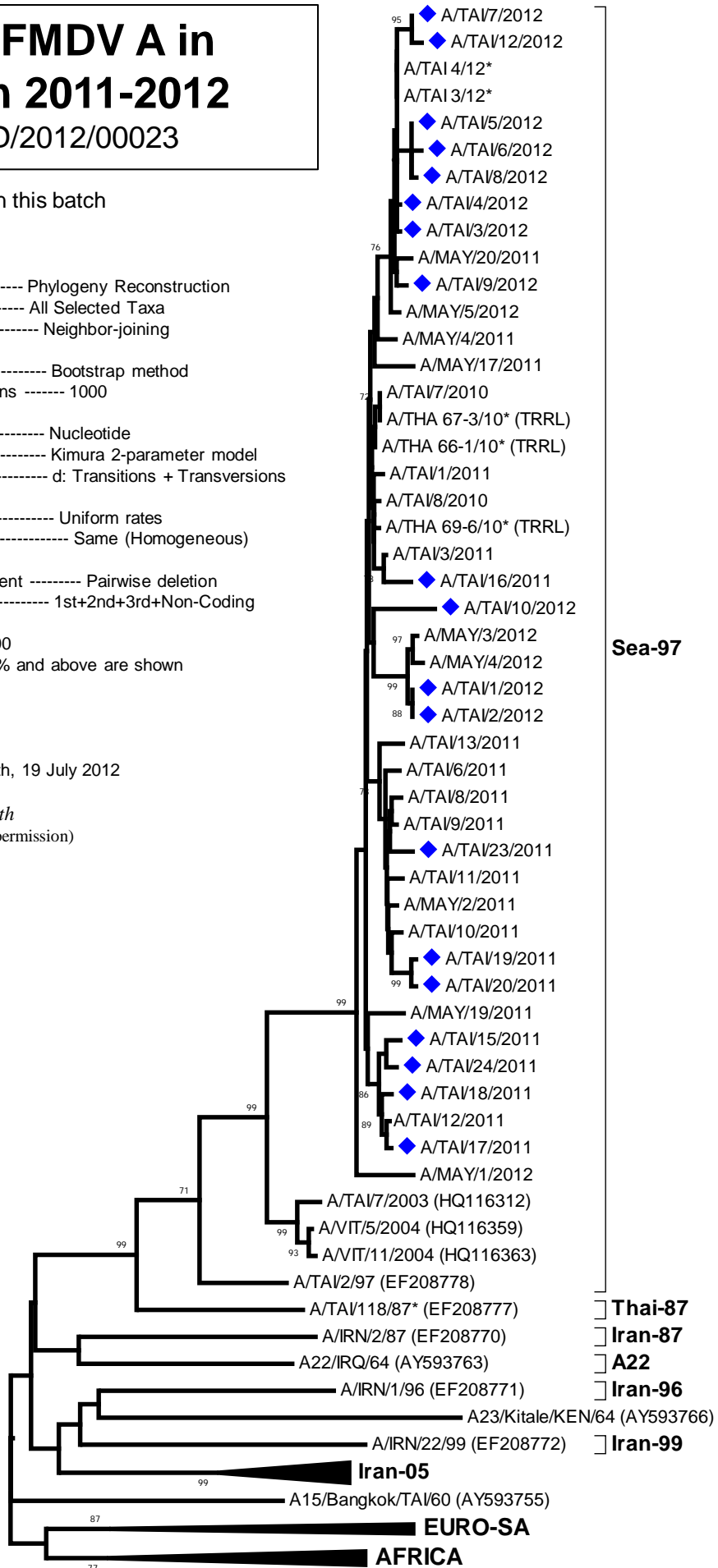
Only bootstrap values of 70% and above are shown

*, not a WRLFMD Ref. No.

N.J. Knowles & J. Wadsworth, 19 July 2012

© Institute for Animal Health

(not to be reproduced without permission)



0.02