

FAO World Reference Laboratory for Foot-and-Mouth Disease (WRLFMD)

Genotyping Report

FMDV serotype: O
Country: Israel
Year: 2019
Batch: WRLFMD/2019/00027
No. of sequences: 23
Report date: 26th June 2019
Report generated by: Nick Knowles
Report checked by: Jemma Wadsworth



Copyright © 2019 The Pirbright Institute, Ash Road, Pirbright, Woking GU24 0NF, United Kingdom.

www: <http://www.wrlfmd.org/>

email: reporting@pirbright.ac.uk

The contents of this report should not be reproduced without permission.

Virus sample name:	ISR/2/2019
Sender reference:	340596 (2)
Location of origin:	Kibbutz Gonen, Tsefat, Hatzafon
Country of origin:	Israel
Date of collection:	28/01/2019
Host species:	cattle
Serotype:	O
Topotype:	ME-SA
Lineage:	PanAsia-2
Sublineage:	QOM-15
Sequence length:	633
Ambiguities:	0
Material submitted for sequencing:	BTy1
Harvest date of material:	14/06/2019
Primers:	O-1C244F/EUR-2B52R; FMD-3161F/FMD-4303R
Received for sequencing:	24/06/2019
Created:	26/06/2019
Last updated:	26/06/2019

VIBASys IDs: sample 42313, genome 42314, sequence viba_42315, sequencing info 42316

Most Closely Related Sequences

sequence	virus name	Host	% Id.	# Ambig.	serotype	topotype	lineage	sublineage
viba_40068	ISR/81/2018	cattle	99.8	0	O	ME-SA	PanAsia-2	QOM-15
viba_40060	ISR/79/2018	cattle	99.8	0	O	ME-SA	PanAsia-2	QOM-15
viba_39984	ISR/58/2018	cattle	99.7	0	O	ME-SA	PanAsia-2	QOM-15
viba_39960	ISR/51/2018	cattle	99.7	0	O	ME-SA	PanAsia-2	QOM-15
viba_39972	ISR/54/2018	cattle	99.7	0	O	ME-SA	PanAsia-2	QOM-15
viba_39964	ISR/52/2018	cattle	99.7	0	O	ME-SA	PanAsia-2	QOM-15
viba_40064	ISR/80/2018	gazelle	99.7	0	O	ME-SA	PanAsia-2	QOM-15
viba_39968	ISR/53/2018	cattle	99.7	0	O	ME-SA	PanAsia-2	QOM-15
viba_39976	ISR/55/2018	cattle	99.7	0	O	ME-SA	PanAsia-2	QOM-15
viba_40072	ISR/82/2018	gazelle	99.7	0	O	ME-SA	PanAsia-2	QOM-15

Most Closely Related Prototype Sequences

see http://www.wrlfmd.org/fmd_genotyping/prototypes.htm

sequence	virus name	Host	% Id.	# Ambig.	serotype	topotype	lineage	sublineage
viba_860	IRN/6/2015	cattle	96.1	0	O	ME-SA	PanAsia-2	QOM-15
viba_666	IRN/18/2010	cattle	92.4	0	O	ME-SA	PanAsia-2	BAL-09
viba_766	IRN/31/2009	cattle	91.0	0	O	ME-SA	PanAsia-2	FAR-09
viba_650	IRN/8/2005	ovine	90.7	0	O	ME-SA	PanAsia-2	
viba_719	IRN/88/2009		90.4	0	O	ME-SA	PanAsia-2	ANT-10
viba_850	NEP/1/2015	cattle	89.9	1	O	ME-SA	PanAsia-2	KAT-15
viba_491	TUR/257/2008		89.7	0	O	ME-SA	PanAsia-2	TER-08
viba_354	PAK/16/2010	cattle	88.9	0	O	ME-SA	PanAsia-2	PUN-10
viba_505	TUR/264/2009		88.8	0	O	ME-SA	PanAsia-2	SAN-09
viba_285	UKG/35/2001	porcine	88.3	0	O	ME-SA	PanAsia	

Virus sample name:	ISR/3/2019
Sender reference:	340940 (4)
Location of origin:	Tamra, Acco, Hatzafon
Country of origin:	Israel
Date of collection:	30/01/2019
Host species:	cattle
Serotype:	O
Topotype:	ME-SA
Lineage:	PanAsia-2
Sublineage:	QOM-15
Sequence length:	633
Ambiguities:	0
Material submitted for sequencing:	BTy1
Harvest date of material:	14/06/2019
Primers:	O-1C244F/EUR-2B52R; FMD-3161F/FMD-4303R
Received for sequencing:	24/06/2019
Created:	26/06/2019
Last updated:	26/06/2019
VIBASys IDs: sample 42317, genome 42318, sequence viba_42319, sequencing info 42320	

Most Closely Related Sequences

sequence	virus name	Host	% Id.	# Ambig.	serotype	topotype	lineage	sublineage
viba_41217	Tamra/340940/ISR/2019	cattle	100.0	0	O	ME-SA	PanAsia-2	QOM-15
viba_42371	ISR/19/2019	cattle	100.0	0	O	ME-SA	PanAsia-2	QOM-15
viba_42327	ISR/5/2019	cattle	100.0	0	O	ME-SA	PanAsia-2	QOM-15
viba_42335	ISR/10/2019	cattle	100.0	0	O	ME-SA	PanAsia-2	QOM-15
viba_42323	ISR/4/2019	cattle	100.0	0	O	ME-SA	PanAsia-2	QOM-15
viba_42331	ISR/9/2019	cattle	100.0	0	O	ME-SA	PanAsia-2	QOM-15
viba_42379	ISR/21/2019	cattle	99.8	0	O	ME-SA	PanAsia-2	QOM-15
viba_42383	ISR/22/2019	cattle	99.8	0	O	ME-SA	PanAsia-2	QOM-15
viba_42375	ISR/20/2019	cattle	99.8	0	O	ME-SA	PanAsia-2	QOM-15
viba_42395	ISR/25/2019	cattle	99.8	0	O	ME-SA	PanAsia-2	QOM-15

Most Closely Related Prototype Sequences

see http://www.wrlfmd.org/fmd_genotyping/prototypes.htm

sequence	virus name	Host	% Id.	# Ambig.	serotype	topotype	lineage	sublineage
viba_860	IRN/6/2015	cattle	96.1	0	O	ME-SA	PanAsia-2	QOM-15
viba_666	IRN/18/2010	cattle	93.0	0	O	ME-SA	PanAsia-2	BAL-09
viba_766	IRN/31/2009	cattle	91.9	0	O	ME-SA	PanAsia-2	FAR-09
viba_650	IRN/8/2005	ovine	91.5	0	O	ME-SA	PanAsia-2	
viba_719	IRN/88/2009		90.8	0	O	ME-SA	PanAsia-2	ANT-10
viba_850	NEP/1/2015	cattle	90.5	1	O	ME-SA	PanAsia-2	KAT-15
viba_491	TUR/257/2008		90.5	0	O	ME-SA	PanAsia-2	TER-08
viba_354	PAK/16/2010	cattle	90.2	0	O	ME-SA	PanAsia-2	PUN-10
viba_505	TUR/264/2009		89.6	0	O	ME-SA	PanAsia-2	SAN-09
viba_285	UKG/35/2001	porcine	89.1	0	O	ME-SA	PanAsia	

Virus sample name:	ISR/4/2019
Sender reference:	340940 (5)
Location of origin:	Tamra, Acco, Hatzafon
Country of origin:	Israel
Date of collection:	30/01/2019
Host species:	cattle
Serotype:	O
Topotype:	ME-SA
Lineage:	PanAsia-2
Sublineage:	QOM-15
Sequence length:	633
Ambiguities:	0
Material submitted for sequencing:	BTy1
Harvest date of material:	14/06/2019
Primers:	O-1C244F/EUR-2B52R; FMD-3161F/FMD-4303R
Received for sequencing:	24/06/2019
Created:	26/06/2019
Last updated:	26/06/2019
VIBASys IDs: sample 42321, genome 42322, sequence viba_42323, sequencing info 42324	

Most Closely Related Sequences

sequence	virus name	Host	% Id.	# Ambig.	serotype	topotype	lineage	sublineage
viba_41217	Tamra/340940/ISR/2019	cattle	100.0	0	O	ME-SA	PanAsia-2	QOM-15
viba_42371	ISR/19/2019	cattle	100.0	0	O	ME-SA	PanAsia-2	QOM-15
viba_42327	ISR/5/2019	cattle	100.0	0	O	ME-SA	PanAsia-2	QOM-15
viba_42335	ISR/10/2019	cattle	100.0	0	O	ME-SA	PanAsia-2	QOM-15
viba_42319	ISR/3/2019	cattle	100.0	0	O	ME-SA	PanAsia-2	QOM-15
viba_42331	ISR/9/2019	cattle	100.0	0	O	ME-SA	PanAsia-2	QOM-15
viba_42379	ISR/21/2019	cattle	99.8	0	O	ME-SA	PanAsia-2	QOM-15
viba_42383	ISR/22/2019	cattle	99.8	0	O	ME-SA	PanAsia-2	QOM-15
viba_42375	ISR/20/2019	cattle	99.8	0	O	ME-SA	PanAsia-2	QOM-15
viba_42395	ISR/25/2019	cattle	99.8	0	O	ME-SA	PanAsia-2	QOM-15

Most Closely Related Prototype Sequences

see http://www.wrlfmd.org/fmd_genotyping/prototypes.htm

sequence	virus name	Host	% Id.	# Ambig.	serotype	topotype	lineage	sublineage
viba_860	IRN/6/2015	cattle	96.1	0	O	ME-SA	PanAsia-2	QOM-15
viba_666	IRN/18/2010	cattle	93.0	0	O	ME-SA	PanAsia-2	BAL-09
viba_766	IRN/31/2009	cattle	91.9	0	O	ME-SA	PanAsia-2	FAR-09
viba_650	IRN/8/2005	ovine	91.5	0	O	ME-SA	PanAsia-2	
viba_719	IRN/88/2009		90.8	0	O	ME-SA	PanAsia-2	ANT-10
viba_850	NEP/1/2015	cattle	90.5	1	O	ME-SA	PanAsia-2	KAT-15
viba_491	TUR/257/2008		90.5	0	O	ME-SA	PanAsia-2	TER-08
viba_354	PAK/16/2010	cattle	90.2	0	O	ME-SA	PanAsia-2	PUN-10
viba_505	TUR/264/2009		89.6	0	O	ME-SA	PanAsia-2	SAN-09
viba_285	UKG/35/2001	porcine	89.1	0	O	ME-SA	PanAsia	

Virus sample name:	ISR/5/2019
Sender reference:	340940 (6)
Location of origin:	Tamra, Acco, Hatzafon
Country of origin:	Israel
Date of collection:	30/01/2019
Host species:	cattle
Serotype:	O
Topotype:	ME-SA
Lineage:	PanAsia-2
Sublineage:	QOM-15
Sequence length:	633
Ambiguities:	0
Material submitted for sequencing:	BTy1
Harvest date of material:	14/06/2019
Primers:	O-1C244F/EUR-2B52R; FMD-3161F/FMD-4303R
Received for sequencing:	24/06/2019
Created:	26/06/2019
Last updated:	26/06/2019
VIBASys IDs: sample 42325, genome 42326, sequence viba_42327, sequencing info 42328	

Most Closely Related Sequences

sequence	virus name	Host	% Id.	# Ambig.	serotype	topotype	lineage	sublineage
viba_41217	Tamra/340940/ISR/2019	cattle	100.0	0	O	ME-SA	PanAsia-2	QOM-15
viba_42371	ISR/19/2019	cattle	100.0	0	O	ME-SA	PanAsia-2	QOM-15
viba_42335	ISR/10/2019	cattle	100.0	0	O	ME-SA	PanAsia-2	QOM-15
viba_42319	ISR/3/2019	cattle	100.0	0	O	ME-SA	PanAsia-2	QOM-15
viba_42323	ISR/4/2019	cattle	100.0	0	O	ME-SA	PanAsia-2	QOM-15
viba_42331	ISR/9/2019	cattle	100.0	0	O	ME-SA	PanAsia-2	QOM-15
viba_42379	ISR/21/2019	cattle	99.8	0	O	ME-SA	PanAsia-2	QOM-15
viba_42383	ISR/22/2019	cattle	99.8	0	O	ME-SA	PanAsia-2	QOM-15
viba_42375	ISR/20/2019	cattle	99.8	0	O	ME-SA	PanAsia-2	QOM-15
viba_42395	ISR/25/2019	cattle	99.8	0	O	ME-SA	PanAsia-2	QOM-15

Most Closely Related Prototype Sequences

see http://www.wrlfmd.org/fmd_genotyping/prototypes.htm

sequence	virus name	Host	% Id.	# Ambig.	serotype	topotype	lineage	sublineage
viba_860	IRN/6/2015	cattle	96.1	0	O	ME-SA	PanAsia-2	QOM-15
viba_666	IRN/18/2010	cattle	93.0	0	O	ME-SA	PanAsia-2	BAL-09
viba_766	IRN/31/2009	cattle	91.9	0	O	ME-SA	PanAsia-2	FAR-09
viba_650	IRN/8/2005	ovine	91.5	0	O	ME-SA	PanAsia-2	
viba_719	IRN/88/2009		90.8	0	O	ME-SA	PanAsia-2	ANT-10
viba_850	NEP/1/2015	cattle	90.5	1	O	ME-SA	PanAsia-2	KAT-15
viba_491	TUR/257/2008		90.5	0	O	ME-SA	PanAsia-2	TER-08
viba_354	PAK/16/2010	cattle	90.2	0	O	ME-SA	PanAsia-2	PUN-10
viba_505	TUR/264/2009		89.6	0	O	ME-SA	PanAsia-2	SAN-09
viba_285	UKG/35/2001	porcine	89.1	0	O	ME-SA	PanAsia	

Virus sample name:	ISR/9/2019
Sender reference:	340940 (7)
Location of origin:	Tamra, Acco, Hatzafon
Country of origin:	Israel
Date of collection:	02/02/2019
Host species:	cattle
Serotype:	O
Topotype:	ME-SA
Lineage:	PanAsia-2
Sublineage:	QOM-15
Sequence length:	633
Ambiguities:	0
Material submitted for sequencing:	BTy1
Harvest date of material:	14/06/2019
Primers:	O-1C244F/EUR-2B52R; FMD-3161F/FMD-4303R
Received for sequencing:	24/06/2019
Created:	26/06/2019
Last updated:	26/06/2019

VIBASys IDs: sample 42329, genome 42330, sequence viba_42331, sequencing info 42332

Most Closely Related Sequences

sequence	virus name	Host	% Id.	# Ambig.	serotype	topotype	lineage	sublineage
viba_41217	Tamra/340940/ISR/2019	cattle	100.0	0	O	ME-SA	PanAsia-2	QOM-15
viba_42371	ISR/19/2019	cattle	100.0	0	O	ME-SA	PanAsia-2	QOM-15
viba_42327	ISR/5/2019	cattle	100.0	0	O	ME-SA	PanAsia-2	QOM-15
viba_42335	ISR/10/2019	cattle	100.0	0	O	ME-SA	PanAsia-2	QOM-15
viba_42319	ISR/3/2019	cattle	100.0	0	O	ME-SA	PanAsia-2	QOM-15
viba_42323	ISR/4/2019	cattle	100.0	0	O	ME-SA	PanAsia-2	QOM-15
viba_42379	ISR/21/2019	cattle	99.8	0	O	ME-SA	PanAsia-2	QOM-15
viba_42383	ISR/22/2019	cattle	99.8	0	O	ME-SA	PanAsia-2	QOM-15
viba_42375	ISR/20/2019	cattle	99.8	0	O	ME-SA	PanAsia-2	QOM-15
viba_42395	ISR/25/2019	cattle	99.8	0	O	ME-SA	PanAsia-2	QOM-15

Most Closely Related Prototype Sequences

see http://www.wrlfmd.org/fmd_genotyping/prototypes.htm

sequence	virus name	Host	% Id.	# Ambig.	serotype	topotype	lineage	sublineage
viba_860	IRN/6/2015	cattle	96.1	0	O	ME-SA	PanAsia-2	QOM-15
viba_666	IRN/18/2010	cattle	93.0	0	O	ME-SA	PanAsia-2	BAL-09
viba_766	IRN/31/2009	cattle	91.9	0	O	ME-SA	PanAsia-2	FAR-09
viba_650	IRN/8/2005	ovine	91.5	0	O	ME-SA	PanAsia-2	
viba_719	IRN/88/2009		90.8	0	O	ME-SA	PanAsia-2	ANT-10
viba_850	NEP/1/2015	cattle	90.5	1	O	ME-SA	PanAsia-2	KAT-15
viba_491	TUR/257/2008		90.5	0	O	ME-SA	PanAsia-2	TER-08
viba_354	PAK/16/2010	cattle	90.2	0	O	ME-SA	PanAsia-2	PUN-10
viba_505	TUR/264/2009		89.6	0	O	ME-SA	PanAsia-2	SAN-09
viba_285	UKG/35/2001	porcine	89.1	0	O	ME-SA	PanAsia	

Virus sample name:	ISR/10/2019
Sender reference:	340940 (8)
Location of origin:	Tamra, Acco, Hatzafon
Country of origin:	Israel
Date of collection:	02/02/2019
Host species:	cattle
Serotype:	O
Topotype:	ME-SA
Lineage:	PanAsia-2
Sublineage:	QOM-15
Sequence length:	633
Ambiguities:	0
Material submitted for sequencing:	BTy1
Harvest date of material:	14/06/2019
Primers:	O-1C244F/EUR-2B52R; FMD-3161F/FMD-4303R
Received for sequencing:	24/06/2019
Created:	26/06/2019
Last updated:	26/06/2019

VIBASys IDs: sample 42333, genome 42334, sequence viba_42335, sequencing info 42336

Most Closely Related Sequences

sequence	virus name	Host	% Id.	# Ambig.	serotype	topotype	lineage	sublineage
viba_41217	Tamra/340940/ISR/2019	cattle	100.0	0	O	ME-SA	PanAsia-2	QOM-15
viba_42371	ISR/19/2019	cattle	100.0	0	O	ME-SA	PanAsia-2	QOM-15
viba_42327	ISR/5/2019	cattle	100.0	0	O	ME-SA	PanAsia-2	QOM-15
viba_42319	ISR/3/2019	cattle	100.0	0	O	ME-SA	PanAsia-2	QOM-15
viba_42323	ISR/4/2019	cattle	100.0	0	O	ME-SA	PanAsia-2	QOM-15
viba_42331	ISR/9/2019	cattle	100.0	0	O	ME-SA	PanAsia-2	QOM-15
viba_42379	ISR/21/2019	cattle	99.8	0	O	ME-SA	PanAsia-2	QOM-15
viba_42383	ISR/22/2019	cattle	99.8	0	O	ME-SA	PanAsia-2	QOM-15
viba_42375	ISR/20/2019	cattle	99.8	0	O	ME-SA	PanAsia-2	QOM-15
viba_42395	ISR/25/2019	cattle	99.8	0	O	ME-SA	PanAsia-2	QOM-15

Most Closely Related Prototype Sequences

see http://www.wrlfmd.org/fmd_genotyping/prototypes.htm

sequence	virus name	Host	% Id.	# Ambig.	serotype	topotype	lineage	sublineage
viba_860	IRN/6/2015	cattle	96.1	0	O	ME-SA	PanAsia-2	QOM-15
viba_666	IRN/18/2010	cattle	93.0	0	O	ME-SA	PanAsia-2	BAL-09
viba_766	IRN/31/2009	cattle	91.9	0	O	ME-SA	PanAsia-2	FAR-09
viba_650	IRN/8/2005	ovine	91.5	0	O	ME-SA	PanAsia-2	
viba_719	IRN/88/2009		90.8	0	O	ME-SA	PanAsia-2	ANT-10
viba_850	NEP/1/2015	cattle	90.5	1	O	ME-SA	PanAsia-2	KAT-15
viba_491	TUR/257/2008		90.5	0	O	ME-SA	PanAsia-2	TER-08
viba_354	PAK/16/2010	cattle	90.2	0	O	ME-SA	PanAsia-2	PUN-10
viba_505	TUR/264/2009		89.6	0	O	ME-SA	PanAsia-2	SAN-09
viba_285	UKG/35/2001	porcine	89.1	0	O	ME-SA	PanAsia	

Virus sample name:	ISR/11/2019
Sender reference:	341459 (9)
Location of origin:	Yonatan, Golan, Hatzafon
Country of origin:	Israel
Date of collection:	05/02/2019
Host species:	cattle
Serotype:	O
Topotype:	ME-SA
Lineage:	PanAsia-2
Sublineage:	QOM-15
Sequence length:	633
Ambiguities:	0
Material submitted for sequencing:	BTy1
Harvest date of material:	15/06/2019
Primers:	O-1C244F/EUR-2B52R; FMD-3161F/FMD-4303R
Received for sequencing:	24/06/2019
Created:	26/06/2019
Last updated:	26/06/2019

VIBASys IDs: sample 42337, genome 42338, sequence viba_42339, sequencing info 42340

Most Closely Related Sequences

sequence	virus name	Host	% Id.	# Ambig.	serotype	topotype	lineage	sublineage
viba_42363	ISR/17/2019	cattle	100.0	0	O	ME-SA	PanAsia-2	QOM-15
viba_42343	ISR/12/2019	cattle	100.0	0	O	ME-SA	PanAsia-2	QOM-15
viba_42351	ISR/14/2019	cattle	100.0	0	O	ME-SA	PanAsia-2	QOM-15
viba_42355	ISR/15/2019	cattle	100.0	0	O	ME-SA	PanAsia-2	QOM-15
viba_42347	ISR/13/2019	cattle	100.0	0	O	ME-SA	PanAsia-2	QOM-15
viba_42367	ISR/18/2019	cattle	100.0	0	O	ME-SA	PanAsia-2	QOM-15
viba_42359	ISR/16/2019	cattle	100.0	0	O	ME-SA	PanAsia-2	QOM-15
viba_40096	ISR/88/2018	cattle	99.8	0	O	ME-SA	PanAsia-2	QOM-15
viba_40092	ISR/87/2018	cattle	99.8	0	O	ME-SA	PanAsia-2	QOM-15
viba_40076	ISR/83/2018	cattle	99.8	0	O	ME-SA	PanAsia-2	QOM-15

Most Closely Related Prototype Sequences

see http://www.wrlfmd.org/fmd_genotyping/prototypes.htm

sequence	virus name	Host	% Id.	# Ambig.	serotype	topotype	lineage	sublineage
viba_860	IRN/6/2015	cattle	96.4	0	O	ME-SA	PanAsia-2	QOM-15
viba_666	IRN/18/2010	cattle	92.9	0	O	ME-SA	PanAsia-2	BAL-09
viba_766	IRN/31/2009	cattle	91.3	0	O	ME-SA	PanAsia-2	FAR-09
viba_650	IRN/8/2005	ovine	91.0	0	O	ME-SA	PanAsia-2	
viba_719	IRN/88/2009		90.5	0	O	ME-SA	PanAsia-2	ANT-10
viba_850	NEP/1/2015	cattle	90.4	1	O	ME-SA	PanAsia-2	KAT-15
viba_491	TUR/257/2008		90.0	0	O	ME-SA	PanAsia-2	TER-08
viba_354	PAK/16/2010	cattle	89.3	0	O	ME-SA	PanAsia-2	PUN-10
viba_505	TUR/264/2009		89.1	0	O	ME-SA	PanAsia-2	SAN-09
viba_285	UKG/35/2001	porcine	88.6	0	O	ME-SA	PanAsia	

Virus sample name:	ISR/12/2019
Sender reference:	341459 (10)
Location of origin:	Yonatan, Golan, Hatzafon
Country of origin:	Israel
Date of collection:	05/02/2019
Host species:	cattle
Serotype:	O
Topotype:	ME-SA
Lineage:	PanAsia-2
Sublineage:	QOM-15
Sequence length:	633
Ambiguities:	0
Material submitted for sequencing:	BTy1
Harvest date of material:	14/06/2019
Primers:	O-1C244F/EUR-2B52R; FMD-3161F/FMD-4303R
Received for sequencing:	24/06/2019
Created:	26/06/2019
Last updated:	26/06/2019

VIBASys IDs: sample 42341, genome 42342, sequence viba_42343, sequencing info 42344

Most Closely Related Sequences

sequence	virus name	Host	% Id.	# Ambig.	serotype	topotype	lineage	sublineage
viba_42363	ISR/17/2019	cattle	100.0	0	O	ME-SA	PanAsia-2	QOM-15
viba_42351	ISR/14/2019	cattle	100.0	0	O	ME-SA	PanAsia-2	QOM-15
viba_42355	ISR/15/2019	cattle	100.0	0	O	ME-SA	PanAsia-2	QOM-15
viba_42347	ISR/13/2019	cattle	100.0	0	O	ME-SA	PanAsia-2	QOM-15
viba_42367	ISR/18/2019	cattle	100.0	0	O	ME-SA	PanAsia-2	QOM-15
viba_42339	ISR/11/2019	cattle	100.0	0	O	ME-SA	PanAsia-2	QOM-15
viba_42359	ISR/16/2019	cattle	100.0	0	O	ME-SA	PanAsia-2	QOM-15
viba_40096	ISR/88/2018	cattle	99.8	0	O	ME-SA	PanAsia-2	QOM-15
viba_40092	ISR/87/2018	cattle	99.8	0	O	ME-SA	PanAsia-2	QOM-15
viba_40076	ISR/83/2018	cattle	99.8	0	O	ME-SA	PanAsia-2	QOM-15

Most Closely Related Prototype Sequences

see http://www.wrlfmd.org/fmd_genotyping/prototypes.htm

sequence	virus name	Host	% Id.	# Ambig.	serotype	topotype	lineage	sublineage
viba_860	IRN/6/2015	cattle	96.4	0	O	ME-SA	PanAsia-2	QOM-15
viba_666	IRN/18/2010	cattle	92.9	0	O	ME-SA	PanAsia-2	BAL-09
viba_766	IRN/31/2009	cattle	91.3	0	O	ME-SA	PanAsia-2	FAR-09
viba_650	IRN/8/2005	ovine	91.0	0	O	ME-SA	PanAsia-2	
viba_719	IRN/88/2009		90.5	0	O	ME-SA	PanAsia-2	ANT-10
viba_850	NEP/1/2015	cattle	90.4	1	O	ME-SA	PanAsia-2	KAT-15
viba_491	TUR/257/2008		90.0	0	O	ME-SA	PanAsia-2	TER-08
viba_354	PAK/16/2010	cattle	89.3	0	O	ME-SA	PanAsia-2	PUN-10
viba_505	TUR/264/2009		89.1	0	O	ME-SA	PanAsia-2	SAN-09
viba_285	UKG/35/2001	porcine	88.6	0	O	ME-SA	PanAsia	

Virus sample name:	ISR/13/2019
Sender reference:	341459 (11)
Location of origin:	Yonatan, Golan, Hatzafon
Country of origin:	Israel
Date of collection:	05/02/2019
Host species:	cattle
Serotype:	O
Topotype:	ME-SA
Lineage:	PanAsia-2
Sublineage:	QOM-15
Sequence length:	633
Ambiguities:	0
Material submitted for sequencing:	BTy1
Harvest date of material:	14/06/2019
Primers:	O-1C244F/EUR-2B52R; FMD-3161F/FMD-4303R
Received for sequencing:	24/06/2019
Created:	26/06/2019
Last updated:	26/06/2019

VIBASys IDs: sample 42345, genome 42346, sequence viba_42347, sequencing info 42348

Most Closely Related Sequences

sequence	virus name	Host	% Id.	# Ambig.	serotype	topotype	lineage	sublineage
viba_42363	ISR/17/2019	cattle	100.0	0	O	ME-SA	PanAsia-2	QOM-15
viba_42343	ISR/12/2019	cattle	100.0	0	O	ME-SA	PanAsia-2	QOM-15
viba_42351	ISR/14/2019	cattle	100.0	0	O	ME-SA	PanAsia-2	QOM-15
viba_42355	ISR/15/2019	cattle	100.0	0	O	ME-SA	PanAsia-2	QOM-15
viba_42367	ISR/18/2019	cattle	100.0	0	O	ME-SA	PanAsia-2	QOM-15
viba_42339	ISR/11/2019	cattle	100.0	0	O	ME-SA	PanAsia-2	QOM-15
viba_42359	ISR/16/2019	cattle	100.0	0	O	ME-SA	PanAsia-2	QOM-15
viba_40096	ISR/88/2018	cattle	99.8	0	O	ME-SA	PanAsia-2	QOM-15
viba_40092	ISR/87/2018	cattle	99.8	0	O	ME-SA	PanAsia-2	QOM-15
viba_40076	ISR/83/2018	cattle	99.8	0	O	ME-SA	PanAsia-2	QOM-15

Most Closely Related Prototype Sequences

see http://www.wrlfmd.org/fmd_genotyping/prototypes.htm

sequence	virus name	Host	% Id.	# Ambig.	serotype	topotype	lineage	sublineage
viba_860	IRN/6/2015	cattle	96.4	0	O	ME-SA	PanAsia-2	QOM-15
viba_666	IRN/18/2010	cattle	92.9	0	O	ME-SA	PanAsia-2	BAL-09
viba_766	IRN/31/2009	cattle	91.3	0	O	ME-SA	PanAsia-2	FAR-09
viba_650	IRN/8/2005	ovine	91.0	0	O	ME-SA	PanAsia-2	
viba_719	IRN/88/2009		90.5	0	O	ME-SA	PanAsia-2	ANT-10
viba_850	NEP/1/2015	cattle	90.4	1	O	ME-SA	PanAsia-2	KAT-15
viba_491	TUR/257/2008		90.0	0	O	ME-SA	PanAsia-2	TER-08
viba_354	PAK/16/2010	cattle	89.3	0	O	ME-SA	PanAsia-2	PUN-10
viba_505	TUR/264/2009		89.1	0	O	ME-SA	PanAsia-2	SAN-09
viba_285	UKG/35/2001	porcine	88.6	0	O	ME-SA	PanAsia	

Virus sample name:	ISR/14/2019
Sender reference:	341459 (12)
Location of origin:	Yonatan, Golan, Hatzafon
Country of origin:	Israel
Date of collection:	05/02/2019
Host species:	cattle
Serotype:	O
Topotype:	ME-SA
Lineage:	PanAsia-2
Sublineage:	QOM-15
Sequence length:	633
Ambiguities:	0
Material submitted for sequencing:	BTy1
Harvest date of material:	15/06/2019
Primers:	O-1C244F/EUR-2B52R; FMD-3161F/FMD-4303R
Received for sequencing:	24/06/2019
Created:	26/06/2019
Last updated:	26/06/2019

VIBASys IDs: sample 42349, genome 42350, sequence viba_42351, sequencing info 42352

Most Closely Related Sequences

sequence	virus name	Host	% Id.	# Ambig.	serotype	topotype	lineage	sublineage
viba_42363	ISR/17/2019	cattle	100.0	0	O	ME-SA	PanAsia-2	QOM-15
viba_42343	ISR/12/2019	cattle	100.0	0	O	ME-SA	PanAsia-2	QOM-15
viba_42355	ISR/15/2019	cattle	100.0	0	O	ME-SA	PanAsia-2	QOM-15
viba_42347	ISR/13/2019	cattle	100.0	0	O	ME-SA	PanAsia-2	QOM-15
viba_42367	ISR/18/2019	cattle	100.0	0	O	ME-SA	PanAsia-2	QOM-15
viba_42339	ISR/11/2019	cattle	100.0	0	O	ME-SA	PanAsia-2	QOM-15
viba_42359	ISR/16/2019	cattle	100.0	0	O	ME-SA	PanAsia-2	QOM-15
viba_40096	ISR/88/2018	cattle	99.8	0	O	ME-SA	PanAsia-2	QOM-15
viba_40092	ISR/87/2018	cattle	99.8	0	O	ME-SA	PanAsia-2	QOM-15
viba_40076	ISR/83/2018	cattle	99.8	0	O	ME-SA	PanAsia-2	QOM-15

Most Closely Related Prototype Sequences

see http://www.wrlfmd.org/fmd_genotyping/prototypes.htm

sequence	virus name	Host	% Id.	# Ambig.	serotype	topotype	lineage	sublineage
viba_860	IRN/6/2015	cattle	96.4	0	O	ME-SA	PanAsia-2	QOM-15
viba_666	IRN/18/2010	cattle	92.9	0	O	ME-SA	PanAsia-2	BAL-09
viba_766	IRN/31/2009	cattle	91.3	0	O	ME-SA	PanAsia-2	FAR-09
viba_650	IRN/8/2005	ovine	91.0	0	O	ME-SA	PanAsia-2	
viba_719	IRN/88/2009		90.5	0	O	ME-SA	PanAsia-2	ANT-10
viba_850	NEP/1/2015	cattle	90.4	1	O	ME-SA	PanAsia-2	KAT-15
viba_491	TUR/257/2008		90.0	0	O	ME-SA	PanAsia-2	TER-08
viba_354	PAK/16/2010	cattle	89.3	0	O	ME-SA	PanAsia-2	PUN-10
viba_505	TUR/264/2009		89.1	0	O	ME-SA	PanAsia-2	SAN-09
viba_285	UKG/35/2001	porcine	88.6	0	O	ME-SA	PanAsia	

Virus sample name:	ISR/15/2019
Sender reference:	341459 (13)
Location of origin:	Yonatan, Golan, Hatzafon
Country of origin:	Israel
Date of collection:	05/02/2019
Host species:	cattle
Serotype:	O
Topotype:	ME-SA
Lineage:	PanAsia-2
Sublineage:	QOM-15
Sequence length:	633
Ambiguities:	0
Material submitted for sequencing:	BTy1
Harvest date of material:	15/06/2019
Primers:	O-1C244F/EUR-2B52R; FMD-3161F/FMD-4303R
Received for sequencing:	24/06/2019
Created:	26/06/2019
Last updated:	26/06/2019

VIBASys IDs: sample 42353, genome 42354, sequence viba_42355, sequencing info 42356

Most Closely Related Sequences

sequence	virus name	Host	% Id.	# Ambig.	serotype	topotype	lineage	sublineage
viba_42363	ISR/17/2019	cattle	100.0	0	O	ME-SA	PanAsia-2	QOM-15
viba_42343	ISR/12/2019	cattle	100.0	0	O	ME-SA	PanAsia-2	QOM-15
viba_42351	ISR/14/2019	cattle	100.0	0	O	ME-SA	PanAsia-2	QOM-15
viba_42347	ISR/13/2019	cattle	100.0	0	O	ME-SA	PanAsia-2	QOM-15
viba_42367	ISR/18/2019	cattle	100.0	0	O	ME-SA	PanAsia-2	QOM-15
viba_42339	ISR/11/2019	cattle	100.0	0	O	ME-SA	PanAsia-2	QOM-15
viba_42359	ISR/16/2019	cattle	100.0	0	O	ME-SA	PanAsia-2	QOM-15
viba_40096	ISR/88/2018	cattle	99.8	0	O	ME-SA	PanAsia-2	QOM-15
viba_40092	ISR/87/2018	cattle	99.8	0	O	ME-SA	PanAsia-2	QOM-15
viba_40076	ISR/83/2018	cattle	99.8	0	O	ME-SA	PanAsia-2	QOM-15

Most Closely Related Prototype Sequences

see http://www.wrlfmd.org/fmd_genotyping/prototypes.htm

sequence	virus name	Host	% Id.	# Ambig.	serotype	topotype	lineage	sublineage
viba_860	IRN/6/2015	cattle	96.4	0	O	ME-SA	PanAsia-2	QOM-15
viba_666	IRN/18/2010	cattle	92.9	0	O	ME-SA	PanAsia-2	BAL-09
viba_766	IRN/31/2009	cattle	91.3	0	O	ME-SA	PanAsia-2	FAR-09
viba_650	IRN/8/2005	ovine	91.0	0	O	ME-SA	PanAsia-2	
viba_719	IRN/88/2009		90.5	0	O	ME-SA	PanAsia-2	ANT-10
viba_850	NEP/1/2015	cattle	90.4	1	O	ME-SA	PanAsia-2	KAT-15
viba_491	TUR/257/2008		90.0	0	O	ME-SA	PanAsia-2	TER-08
viba_354	PAK/16/2010	cattle	89.3	0	O	ME-SA	PanAsia-2	PUN-10
viba_505	TUR/264/2009		89.1	0	O	ME-SA	PanAsia-2	SAN-09
viba_285	UKG/35/2001	porcine	88.6	0	O	ME-SA	PanAsia	

Virus sample name:	ISR/16/2019
Sender reference:	341459 (14)
Location of origin:	Yonatan, Golan, Hatzafon
Country of origin:	Israel
Date of collection:	07/02/2019
Host species:	cattle
Serotype:	O
Topotype:	ME-SA
Lineage:	PanAsia-2
Sublineage:	QOM-15
Sequence length:	633
Ambiguities:	0
Material submitted for sequencing:	BTy1
Harvest date of material:	14/06/2019
Primers:	O-1C244F/EUR-2B52R; FMD-3161F/FMD-4303R
Received for sequencing:	24/06/2019
Created:	26/06/2019
Last updated:	26/06/2019

VIBASys IDs: sample 42357, genome 42358, sequence viba_42359, sequencing info 42360

Most Closely Related Sequences

sequence	virus name	Host	% Id.	# Ambig.	serotype	topotype	lineage	sublineage
viba_42363	ISR/17/2019	cattle	100.0	0	O	ME-SA	PanAsia-2	QOM-15
viba_42343	ISR/12/2019	cattle	100.0	0	O	ME-SA	PanAsia-2	QOM-15
viba_42351	ISR/14/2019	cattle	100.0	0	O	ME-SA	PanAsia-2	QOM-15
viba_42355	ISR/15/2019	cattle	100.0	0	O	ME-SA	PanAsia-2	QOM-15
viba_42347	ISR/13/2019	cattle	100.0	0	O	ME-SA	PanAsia-2	QOM-15
viba_42367	ISR/18/2019	cattle	100.0	0	O	ME-SA	PanAsia-2	QOM-15
viba_42339	ISR/11/2019	cattle	100.0	0	O	ME-SA	PanAsia-2	QOM-15
viba_40096	ISR/88/2018	cattle	99.8	0	O	ME-SA	PanAsia-2	QOM-15
viba_40092	ISR/87/2018	cattle	99.8	0	O	ME-SA	PanAsia-2	QOM-15
viba_40076	ISR/83/2018	cattle	99.8	0	O	ME-SA	PanAsia-2	QOM-15

Most Closely Related Prototype Sequences

see http://www.wrlfmd.org/fmd_genotyping/prototypes.htm

sequence	virus name	Host	% Id.	# Ambig.	serotype	topotype	lineage	sublineage
viba_860	IRN/6/2015	cattle	96.4	0	O	ME-SA	PanAsia-2	QOM-15
viba_666	IRN/18/2010	cattle	92.9	0	O	ME-SA	PanAsia-2	BAL-09
viba_766	IRN/31/2009	cattle	91.3	0	O	ME-SA	PanAsia-2	FAR-09
viba_650	IRN/8/2005	ovine	91.0	0	O	ME-SA	PanAsia-2	
viba_719	IRN/88/2009		90.5	0	O	ME-SA	PanAsia-2	ANT-10
viba_850	NEP/1/2015	cattle	90.4	1	O	ME-SA	PanAsia-2	KAT-15
viba_491	TUR/257/2008		90.0	0	O	ME-SA	PanAsia-2	TER-08
viba_354	PAK/16/2010	cattle	89.3	0	O	ME-SA	PanAsia-2	PUN-10
viba_505	TUR/264/2009		89.1	0	O	ME-SA	PanAsia-2	SAN-09
viba_285	UKG/35/2001	porcine	88.6	0	O	ME-SA	PanAsia	

Virus sample name:	ISR/17/2019
Sender reference:	341459 (15)
Location of origin:	Yonatan, Golan, Hatzafon
Country of origin:	Israel
Date of collection:	07/02/2019
Host species:	cattle
Serotype:	O
Topotype:	ME-SA
Lineage:	PanAsia-2
Sublineage:	QOM-15
Sequence length:	633
Ambiguities:	0
Material submitted for sequencing:	BTy1
Harvest date of material:	15/06/2019
Primers:	O-1C244F/EUR-2B52R; FMD-3161F/FMD-4303R
Received for sequencing:	24/06/2019
Created:	26/06/2019
Last updated:	26/06/2019

VIBASys IDs: sample 42361, genome 42362, sequence viba_42363, sequencing info 42364

Most Closely Related Sequences

sequence	virus name	Host	% Id.	# Ambig.	serotype	topotype	lineage	sublineage
viba_42343	ISR/12/2019	cattle	100.0	0	O	ME-SA	PanAsia-2	QOM-15
viba_42351	ISR/14/2019	cattle	100.0	0	O	ME-SA	PanAsia-2	QOM-15
viba_42355	ISR/15/2019	cattle	100.0	0	O	ME-SA	PanAsia-2	QOM-15
viba_42347	ISR/13/2019	cattle	100.0	0	O	ME-SA	PanAsia-2	QOM-15
viba_42367	ISR/18/2019	cattle	100.0	0	O	ME-SA	PanAsia-2	QOM-15
viba_42339	ISR/11/2019	cattle	100.0	0	O	ME-SA	PanAsia-2	QOM-15
viba_42359	ISR/16/2019	cattle	100.0	0	O	ME-SA	PanAsia-2	QOM-15
viba_40096	ISR/88/2018	cattle	99.8	0	O	ME-SA	PanAsia-2	QOM-15
viba_40092	ISR/87/2018	cattle	99.8	0	O	ME-SA	PanAsia-2	QOM-15
viba_40076	ISR/83/2018	cattle	99.8	0	O	ME-SA	PanAsia-2	QOM-15

Most Closely Related Prototype Sequences

see http://www.wrlfmd.org/fmd_genotyping/prototypes.htm

sequence	virus name	Host	% Id.	# Ambig.	serotype	topotype	lineage	sublineage
viba_860	IRN/6/2015	cattle	96.4	0	O	ME-SA	PanAsia-2	QOM-15
viba_666	IRN/18/2010	cattle	92.9	0	O	ME-SA	PanAsia-2	BAL-09
viba_766	IRN/31/2009	cattle	91.3	0	O	ME-SA	PanAsia-2	FAR-09
viba_650	IRN/8/2005	ovine	91.0	0	O	ME-SA	PanAsia-2	
viba_719	IRN/88/2009		90.5	0	O	ME-SA	PanAsia-2	ANT-10
viba_850	NEP/1/2015	cattle	90.4	1	O	ME-SA	PanAsia-2	KAT-15
viba_491	TUR/257/2008		90.0	0	O	ME-SA	PanAsia-2	TER-08
viba_354	PAK/16/2010	cattle	89.3	0	O	ME-SA	PanAsia-2	PUN-10
viba_505	TUR/264/2009		89.1	0	O	ME-SA	PanAsia-2	SAN-09
viba_285	UKG/35/2001	porcine	88.6	0	O	ME-SA	PanAsia	

Virus sample name:	ISR/18/2019
Sender reference:	341459 (16)
Location of origin:	Yonatan, Golan, Hatzafon
Country of origin:	Israel
Date of collection:	07/02/2019
Host species:	cattle
Serotype:	O
Topotype:	ME-SA
Lineage:	PanAsia-2
Sublineage:	QOM-15
Sequence length:	633
Ambiguities:	0
Material submitted for sequencing:	BTy1
Harvest date of material:	15/06/2019
Primers:	O-1C244F/EUR-2B52R; FMD-3161F/FMD-4303R
Received for sequencing:	24/06/2019
Created:	26/06/2019
Last updated:	26/06/2019

VIBASys IDs: sample 42365, genome 42366, sequence viba_42367, sequencing info 42368

Most Closely Related Sequences

sequence	virus name	Host	% Id.	# Ambig.	serotype	topotype	lineage	sublineage
viba_42363	ISR/17/2019	cattle	100.0	0	O	ME-SA	PanAsia-2	QOM-15
viba_42343	ISR/12/2019	cattle	100.0	0	O	ME-SA	PanAsia-2	QOM-15
viba_42351	ISR/14/2019	cattle	100.0	0	O	ME-SA	PanAsia-2	QOM-15
viba_42355	ISR/15/2019	cattle	100.0	0	O	ME-SA	PanAsia-2	QOM-15
viba_42347	ISR/13/2019	cattle	100.0	0	O	ME-SA	PanAsia-2	QOM-15
viba_42339	ISR/11/2019	cattle	100.0	0	O	ME-SA	PanAsia-2	QOM-15
viba_42359	ISR/16/2019	cattle	100.0	0	O	ME-SA	PanAsia-2	QOM-15
viba_40096	ISR/88/2018	cattle	99.8	0	O	ME-SA	PanAsia-2	QOM-15
viba_40092	ISR/87/2018	cattle	99.8	0	O	ME-SA	PanAsia-2	QOM-15
viba_40076	ISR/83/2018	cattle	99.8	0	O	ME-SA	PanAsia-2	QOM-15

Most Closely Related Prototype Sequences

see http://www.wrlfmd.org/fmd_genotyping/prototypes.htm

sequence	virus name	Host	% Id.	# Ambig.	serotype	topotype	lineage	sublineage
viba_860	IRN/6/2015	cattle	96.4	0	O	ME-SA	PanAsia-2	QOM-15
viba_666	IRN/18/2010	cattle	92.9	0	O	ME-SA	PanAsia-2	BAL-09
viba_766	IRN/31/2009	cattle	91.3	0	O	ME-SA	PanAsia-2	FAR-09
viba_650	IRN/8/2005	ovine	91.0	0	O	ME-SA	PanAsia-2	
viba_719	IRN/88/2009		90.5	0	O	ME-SA	PanAsia-2	ANT-10
viba_850	NEP/1/2015	cattle	90.4	1	O	ME-SA	PanAsia-2	KAT-15
viba_491	TUR/257/2008		90.0	0	O	ME-SA	PanAsia-2	TER-08
viba_354	PAK/16/2010	cattle	89.3	0	O	ME-SA	PanAsia-2	PUN-10
viba_505	TUR/264/2009		89.1	0	O	ME-SA	PanAsia-2	SAN-09
viba_285	UKG/35/2001	porcine	88.6	0	O	ME-SA	PanAsia	

Virus sample name:	ISR/19/2019
Sender reference:	343735 (31)
Location of origin:	Yarka, Hatzafon
Country of origin:	Israel
Date of collection:	26/02/2019
Host species:	cattle
Serotype:	O
Topotype:	ME-SA
Lineage:	PanAsia-2
Sublineage:	QOM-15
Sequence length:	633
Ambiguities:	0
Material submitted for sequencing:	BTy1
Harvest date of material:	15/06/2019
Primers:	O-1C244F/EUR-2B52R; FMD-3161F/FMD-4303R
Received for sequencing:	24/06/2019
Created:	26/06/2019
Last updated:	26/06/2019

VIBASys IDs: sample 42369, genome 42370, sequence viba_42371, sequencing info 42372

Most Closely Related Sequences

sequence	virus name	Host	% Id.	# Ambig.	serotype	topotype	lineage	sublineage
viba_41217	Tamra/340940/ISR/2019	cattle	100.0	0	O	ME-SA	PanAsia-2	QOM-15
viba_42327	ISR/5/2019	cattle	100.0	0	O	ME-SA	PanAsia-2	QOM-15
viba_42335	ISR/10/2019	cattle	100.0	0	O	ME-SA	PanAsia-2	QOM-15
viba_42319	ISR/3/2019	cattle	100.0	0	O	ME-SA	PanAsia-2	QOM-15
viba_42323	ISR/4/2019	cattle	100.0	0	O	ME-SA	PanAsia-2	QOM-15
viba_42331	ISR/9/2019	cattle	100.0	0	O	ME-SA	PanAsia-2	QOM-15
viba_42379	ISR/21/2019	cattle	99.8	0	O	ME-SA	PanAsia-2	QOM-15
viba_42383	ISR/22/2019	cattle	99.8	0	O	ME-SA	PanAsia-2	QOM-15
viba_42375	ISR/20/2019	cattle	99.8	0	O	ME-SA	PanAsia-2	QOM-15
viba_42395	ISR/25/2019	cattle	99.8	0	O	ME-SA	PanAsia-2	QOM-15

Most Closely Related Prototype Sequences

see http://www.wrlfmd.org/fmd_genotyping/prototypes.htm

sequence	virus name	Host	% Id.	# Ambig.	serotype	topotype	lineage	sublineage
viba_860	IRN/6/2015	cattle	96.1	0	O	ME-SA	PanAsia-2	QOM-15
viba_666	IRN/18/2010	cattle	93.0	0	O	ME-SA	PanAsia-2	BAL-09
viba_766	IRN/31/2009	cattle	91.9	0	O	ME-SA	PanAsia-2	FAR-09
viba_650	IRN/8/2005	ovine	91.5	0	O	ME-SA	PanAsia-2	
viba_719	IRN/88/2009		90.8	0	O	ME-SA	PanAsia-2	ANT-10
viba_850	NEP/1/2015	cattle	90.5	1	O	ME-SA	PanAsia-2	KAT-15
viba_491	TUR/257/2008		90.5	0	O	ME-SA	PanAsia-2	TER-08
viba_354	PAK/16/2010	cattle	90.2	0	O	ME-SA	PanAsia-2	PUN-10
viba_505	TUR/264/2009		89.6	0	O	ME-SA	PanAsia-2	SAN-09
viba_285	UKG/35/2001	porcine	89.1	0	O	ME-SA	PanAsia	

Virus sample name:	ISR/20/2019
Sender reference:	343929 (27)
Location of origin:	Tamra, Acco, Hatzafon
Country of origin:	Israel
Date of collection:	28/02/2019
Host species:	cattle
Serotype:	O
Topotype:	ME-SA
Lineage:	PanAsia-2
Sublineage:	QOM-15
Sequence length:	633
Ambiguities:	0
Material submitted for sequencing:	BTy1
Harvest date of material:	15/06/2019
Primers:	O-1C244F/EUR-2B52R; FMD-3161F/FMD-4303R
Received for sequencing:	24/06/2019
Created:	26/06/2019
Last updated:	26/06/2019
VIBASys IDs: sample 42373, genome 42374, sequence viba_42375, sequencing info 42376	

Most Closely Related Sequences

sequence	virus name	Host	% Id.	# Ambig.	serotype	topotype	lineage	sublineage
viba_42379	ISR/21/2019	cattle	100.0	0	O	ME-SA	PanAsia-2	QOM-15
viba_42383	ISR/22/2019	cattle	100.0	0	O	ME-SA	PanAsia-2	QOM-15
viba_42387	ISR/23/2019	cattle	100.0	0	O	ME-SA	PanAsia-2	QOM-15
viba_41217	Tamra/340940/ISR/2019	cattle	99.8	0	O	ME-SA	PanAsia-2	QOM-15
viba_42371	ISR/19/2019	cattle	99.8	0	O	ME-SA	PanAsia-2	QOM-15
viba_42327	ISR/5/2019	cattle	99.8	0	O	ME-SA	PanAsia-2	QOM-15
viba_42335	ISR/10/2019	cattle	99.8	0	O	ME-SA	PanAsia-2	QOM-15
viba_42319	ISR/3/2019	cattle	99.8	0	O	ME-SA	PanAsia-2	QOM-15
viba_42323	ISR/4/2019	cattle	99.8	0	O	ME-SA	PanAsia-2	QOM-15
viba_42331	ISR/9/2019	cattle	99.8	0	O	ME-SA	PanAsia-2	QOM-15

Most Closely Related Prototype Sequences

see http://www.wrlfmd.org/fmd_genotyping/prototypes.htm

sequence	virus name	Host	% Id.	# Ambig.	serotype	topotype	lineage	sublineage
viba_860	IRN/6/2015	cattle	95.9	0	O	ME-SA	PanAsia-2	QOM-15
viba_666	IRN/18/2010	cattle	92.9	0	O	ME-SA	PanAsia-2	BAL-09
viba_766	IRN/31/2009	cattle	91.8	0	O	ME-SA	PanAsia-2	FAR-09
viba_650	IRN/8/2005	ovine	91.3	0	O	ME-SA	PanAsia-2	
viba_719	IRN/88/2009		90.7	0	O	ME-SA	PanAsia-2	ANT-10
viba_850	NEP/1/2015	cattle	90.4	1	O	ME-SA	PanAsia-2	KAT-15
viba_491	TUR/257/2008		90.4	0	O	ME-SA	PanAsia-2	TER-08
viba_354	PAK/16/2010	cattle	90.0	0	O	ME-SA	PanAsia-2	PUN-10
viba_505	TUR/264/2009		89.4	0	O	ME-SA	PanAsia-2	SAN-09
viba_285	UKG/35/2001	porcine	88.9	0	O	ME-SA	PanAsia	

Virus sample name:	ISR/21/2019
Sender reference:	343929 (28)
Location of origin:	Tamra, Acco, Hatzafon
Country of origin:	Israel
Date of collection:	28/02/2019
Host species:	cattle
Serotype:	O
Topotype:	ME-SA
Lineage:	PanAsia-2
Sublineage:	QOM-15
Sequence length:	633
Ambiguities:	0
Material submitted for sequencing:	BTY2
Harvest date of material:	18/06/2019
Primers:	O-1C244F/EUR-2B52R; FMD-3161F/FMD-4303R
Received for sequencing:	24/06/2019
Created:	26/06/2019
Last updated:	26/06/2019
VIBASys IDs: sample 42377, genome 42378, sequence viba_42379, sequencing info 42380	

Most Closely Related Sequences

sequence	virus name	Host	% Id.	# Ambig.	serotype	topotype	lineage	sublineage
viba_42383	ISR/22/2019	cattle	100.0	0	O	ME-SA	PanAsia-2	QOM-15
viba_42375	ISR/20/2019	cattle	100.0	0	O	ME-SA	PanAsia-2	QOM-15
viba_42387	ISR/23/2019	cattle	100.0	0	O	ME-SA	PanAsia-2	QOM-15
viba_41217	Tamra/340940/ISR/2019	cattle	99.8	0	O	ME-SA	PanAsia-2	QOM-15
viba_42371	ISR/19/2019	cattle	99.8	0	O	ME-SA	PanAsia-2	QOM-15
viba_42327	ISR/5/2019	cattle	99.8	0	O	ME-SA	PanAsia-2	QOM-15
viba_42335	ISR/10/2019	cattle	99.8	0	O	ME-SA	PanAsia-2	QOM-15
viba_42319	ISR/3/2019	cattle	99.8	0	O	ME-SA	PanAsia-2	QOM-15
viba_42323	ISR/4/2019	cattle	99.8	0	O	ME-SA	PanAsia-2	QOM-15
viba_42331	ISR/9/2019	cattle	99.8	0	O	ME-SA	PanAsia-2	QOM-15

Most Closely Related Prototype Sequences

see http://www.wrlfmd.org/fmd_genotyping/prototypes.htm

sequence	virus name	Host	% Id.	# Ambig.	serotype	topotype	lineage	sublineage
viba_860	IRN/6/2015	cattle	95.9	0	O	ME-SA	PanAsia-2	QOM-15
viba_666	IRN/18/2010	cattle	92.9	0	O	ME-SA	PanAsia-2	BAL-09
viba_766	IRN/31/2009	cattle	91.8	0	O	ME-SA	PanAsia-2	FAR-09
viba_650	IRN/8/2005	ovine	91.3	0	O	ME-SA	PanAsia-2	
viba_719	IRN/88/2009		90.7	0	O	ME-SA	PanAsia-2	ANT-10
viba_850	NEP/1/2015	cattle	90.4	1	O	ME-SA	PanAsia-2	KAT-15
viba_491	TUR/257/2008		90.4	0	O	ME-SA	PanAsia-2	TER-08
viba_354	PAK/16/2010	cattle	90.0	0	O	ME-SA	PanAsia-2	PUN-10
viba_505	TUR/264/2009		89.4	0	O	ME-SA	PanAsia-2	SAN-09
viba_285	UKG/35/2001	porcine	88.9	0	O	ME-SA	PanAsia	

Virus sample name:	ISR/22/2019
Sender reference:	343929 (29)
Location of origin:	Tamra, Acco, Hatzafon
Country of origin:	Israel
Date of collection:	03/03/2019
Host species:	cattle
Serotype:	O
Topotype:	ME-SA
Lineage:	PanAsia-2
Sublineage:	QOM-15
Sequence length:	633
Ambiguities:	0
Material submitted for sequencing:	BTy1
Harvest date of material:	15/06/2019
Primers:	O-1C244F/EUR-2B52R; FMD-3161F/FMD-4303R
Received for sequencing:	24/06/2019
Created:	26/06/2019
Last updated:	26/06/2019
VIBASys IDs: sample 42381, genome 42382, sequence viba_42383, sequencing info 42384	

Most Closely Related Sequences

sequence	virus name	Host	% Id.	# Ambig.	serotype	topotype	lineage	sublineage
viba_42379	ISR/21/2019	cattle	100.0	0	O	ME-SA	PanAsia-2	QOM-15
viba_42375	ISR/20/2019	cattle	100.0	0	O	ME-SA	PanAsia-2	QOM-15
viba_42387	ISR/23/2019	cattle	100.0	0	O	ME-SA	PanAsia-2	QOM-15
viba_41217	Tamra/340940/ISR/2019	cattle	99.8	0	O	ME-SA	PanAsia-2	QOM-15
viba_42371	ISR/19/2019	cattle	99.8	0	O	ME-SA	PanAsia-2	QOM-15
viba_42327	ISR/5/2019	cattle	99.8	0	O	ME-SA	PanAsia-2	QOM-15
viba_42335	ISR/10/2019	cattle	99.8	0	O	ME-SA	PanAsia-2	QOM-15
viba_42319	ISR/3/2019	cattle	99.8	0	O	ME-SA	PanAsia-2	QOM-15
viba_42323	ISR/4/2019	cattle	99.8	0	O	ME-SA	PanAsia-2	QOM-15
viba_42331	ISR/9/2019	cattle	99.8	0	O	ME-SA	PanAsia-2	QOM-15

Most Closely Related Prototype Sequences

see http://www.wrlfmd.org/fmd_genotyping/prototypes.htm

sequence	virus name	Host	% Id.	# Ambig.	serotype	topotype	lineage	sublineage
viba_860	IRN/6/2015	cattle	95.9	0	O	ME-SA	PanAsia-2	QOM-15
viba_666	IRN/18/2010	cattle	92.9	0	O	ME-SA	PanAsia-2	BAL-09
viba_766	IRN/31/2009	cattle	91.8	0	O	ME-SA	PanAsia-2	FAR-09
viba_650	IRN/8/2005	ovine	91.3	0	O	ME-SA	PanAsia-2	
viba_719	IRN/88/2009		90.7	0	O	ME-SA	PanAsia-2	ANT-10
viba_850	NEP/1/2015	cattle	90.4	1	O	ME-SA	PanAsia-2	KAT-15
viba_491	TUR/257/2008		90.4	0	O	ME-SA	PanAsia-2	TER-08
viba_354	PAK/16/2010	cattle	90.0	0	O	ME-SA	PanAsia-2	PUN-10
viba_505	TUR/264/2009		89.4	0	O	ME-SA	PanAsia-2	SAN-09
viba_285	UKG/35/2001	porcine	88.9	0	O	ME-SA	PanAsia	

Virus sample name:	ISR/23/2019
Sender reference:	343929 (30)
Location of origin:	Tamra, Acco, Hatzafon
Country of origin:	Israel
Date of collection:	03/03/2019
Host species:	cattle
Serotype:	O
Topotype:	ME-SA
Lineage:	PanAsia-2
Sublineage:	QOM-15
Sequence length:	633
Ambiguities:	0
Material submitted for sequencing:	BTy1
Harvest date of material:	15/06/2019
Primers:	O-1C244F/EUR-2B52R; FMD-3161F/FMD-4303R
Received for sequencing:	24/06/2019
Created:	26/06/2019
Last updated:	26/06/2019
VIBASys IDs: sample 42385, genome 42386, sequence viba_42387, sequencing info 42388	

Most Closely Related Sequences

sequence	virus name	Host	% Id.	# Ambig.	serotype	topotype	lineage	sublineage
viba_42379	ISR/21/2019	cattle	100.0	0	O	ME-SA	PanAsia-2	QOM-15
viba_42383	ISR/22/2019	cattle	100.0	0	O	ME-SA	PanAsia-2	QOM-15
viba_42375	ISR/20/2019	cattle	100.0	0	O	ME-SA	PanAsia-2	QOM-15
viba_41217	Tamra/340940/ISR/2019	cattle	99.8	0	O	ME-SA	PanAsia-2	QOM-15
viba_42371	ISR/19/2019	cattle	99.8	0	O	ME-SA	PanAsia-2	QOM-15
viba_42327	ISR/5/2019	cattle	99.8	0	O	ME-SA	PanAsia-2	QOM-15
viba_42335	ISR/10/2019	cattle	99.8	0	O	ME-SA	PanAsia-2	QOM-15
viba_42319	ISR/3/2019	cattle	99.8	0	O	ME-SA	PanAsia-2	QOM-15
viba_42323	ISR/4/2019	cattle	99.8	0	O	ME-SA	PanAsia-2	QOM-15
viba_42331	ISR/9/2019	cattle	99.8	0	O	ME-SA	PanAsia-2	QOM-15

Most Closely Related Prototype Sequences

see http://www.wrlfmd.org/fmd_genotyping/prototypes.htm

sequence	virus name	Host	% Id.	# Ambig.	serotype	topotype	lineage	sublineage
viba_860	IRN/6/2015	cattle	95.9	0	O	ME-SA	PanAsia-2	QOM-15
viba_666	IRN/18/2010	cattle	92.9	0	O	ME-SA	PanAsia-2	BAL-09
viba_766	IRN/31/2009	cattle	91.8	0	O	ME-SA	PanAsia-2	FAR-09
viba_650	IRN/8/2005	ovine	91.3	0	O	ME-SA	PanAsia-2	
viba_719	IRN/88/2009		90.7	0	O	ME-SA	PanAsia-2	ANT-10
viba_850	NEP/1/2015	cattle	90.4	1	O	ME-SA	PanAsia-2	KAT-15
viba_491	TUR/257/2008		90.4	0	O	ME-SA	PanAsia-2	TER-08
viba_354	PAK/16/2010	cattle	90.0	0	O	ME-SA	PanAsia-2	PUN-10
viba_505	TUR/264/2009		89.4	0	O	ME-SA	PanAsia-2	SAN-09
viba_285	UKG/35/2001	porcine	88.9	0	O	ME-SA	PanAsia	

Virus sample name:	ISR/24/2019
Sender reference:	349641 (23)
Location of origin:	Daliyat al Karmel, Haifa, Haifa
Country of origin:	Israel
Date of collection:	07/05/2019
Host species:	cattle
Serotype:	O
Topotype:	ME-SA
Lineage:	PanAsia-2
Sublineage:	QOM-15
Sequence length:	633
Ambiguities:	0
Material submitted for sequencing:	BTY2
Harvest date of material:	18/06/2019
Primers:	O-1C244F/EUR-2B52R; FMD-3161F/FMD-4303R
Received for sequencing:	24/06/2019
Created:	26/06/2019
Last updated:	26/06/2019

VIBASys IDs: sample 42389, genome 42390, sequence viba_42391, sequencing info 42392

Most Closely Related Sequences

sequence	virus name	Host	% Id.	# Ambig.	serotype	topotype	lineage	sublineage
viba_42403	ISR/27/2019	cattle	99.8	0	O	ME-SA	PanAsia-2	QOM-15
viba_42395	ISR/25/2019	cattle	99.8	0	O	ME-SA	PanAsia-2	QOM-15
viba_42399	ISR/26/2019	cattle	99.8	0	O	ME-SA	PanAsia-2	QOM-15
viba_41217	Tamra/340940/ISR/2019	cattle	99.7	0	O	ME-SA	PanAsia-2	QOM-15
viba_42371	ISR/19/2019	cattle	99.7	0	O	ME-SA	PanAsia-2	QOM-15
viba_42327	ISR/5/2019	cattle	99.7	0	O	ME-SA	PanAsia-2	QOM-15
viba_42335	ISR/10/2019	cattle	99.7	0	O	ME-SA	PanAsia-2	QOM-15
viba_42319	ISR/3/2019	cattle	99.7	0	O	ME-SA	PanAsia-2	QOM-15
viba_42323	ISR/4/2019	cattle	99.7	0	O	ME-SA	PanAsia-2	QOM-15
viba_42331	ISR/9/2019	cattle	99.7	0	O	ME-SA	PanAsia-2	QOM-15

Most Closely Related Prototype Sequences

see http://www.wrlfmd.org/fmd_genotyping/prototypes.htm

sequence	virus name	Host	% Id.	# Ambig.	serotype	topotype	lineage	sublineage
viba_860	IRN/6/2015	cattle	95.7	0	O	ME-SA	PanAsia-2	QOM-15
viba_666	IRN/18/2010	cattle	92.7	0	O	ME-SA	PanAsia-2	BAL-09
viba_766	IRN/31/2009	cattle	91.6	0	O	ME-SA	PanAsia-2	FAR-09
viba_650	IRN/8/2005	ovine	91.2	0	O	ME-SA	PanAsia-2	
viba_719	IRN/88/2009		90.5	0	O	ME-SA	PanAsia-2	ANT-10
viba_850	NEP/1/2015	cattle	90.2	1	O	ME-SA	PanAsia-2	KAT-15
viba_491	TUR/257/2008		90.2	0	O	ME-SA	PanAsia-2	TER-08
viba_354	PAK/16/2010	cattle	89.9	0	O	ME-SA	PanAsia-2	PUN-10
viba_505	TUR/264/2009		89.3	0	O	ME-SA	PanAsia-2	SAN-09
viba_285	UKG/35/2001	porcine	89.1	0	O	ME-SA	PanAsia	

Virus sample name:	ISR/25/2019
Sender reference:	349641 (24)
Location of origin:	Daliyat al Karmel, Haifa, Haifa
Country of origin:	Israel
Date of collection:	07/05/2019
Host species:	cattle
Serotype:	O
Topotype:	ME-SA
Lineage:	PanAsia-2
Sublineage:	QOM-15
Sequence length:	633
Ambiguities:	0
Material submitted for sequencing:	BTy1
Harvest date of material:	15/06/2019
Primers:	O-1C244F/EUR-2B52R; FMD-3161F/FMD-4303R
Received for sequencing:	24/06/2019
Created:	26/06/2019
Last updated:	26/06/2019

VIBASys IDs: sample 42393, genome 42394, sequence viba_42395, sequencing info 42396

Most Closely Related Sequences

sequence	virus name	Host	% Id.	# Ambig.	serotype	topotype	lineage	sublineage
viba_42399	ISR/26/2019	cattle	100.0	0	O	ME-SA	PanAsia-2	QOM-15
viba_41217	Tamra/340940/ISR/2019	cattle	99.8	0	O	ME-SA	PanAsia-2	QOM-15
viba_42391	ISR/24/2019	cattle	99.8	0	O	ME-SA	PanAsia-2	QOM-15
viba_42371	ISR/19/2019	cattle	99.8	0	O	ME-SA	PanAsia-2	QOM-15
viba_42327	ISR/5/2019	cattle	99.8	0	O	ME-SA	PanAsia-2	QOM-15
viba_42335	ISR/10/2019	cattle	99.8	0	O	ME-SA	PanAsia-2	QOM-15
viba_42319	ISR/3/2019	cattle	99.8	0	O	ME-SA	PanAsia-2	QOM-15
viba_42323	ISR/4/2019	cattle	99.8	0	O	ME-SA	PanAsia-2	QOM-15
viba_42331	ISR/9/2019	cattle	99.8	0	O	ME-SA	PanAsia-2	QOM-15
viba_42403	ISR/27/2019	cattle	99.7	0	O	ME-SA	PanAsia-2	QOM-15

Most Closely Related Prototype Sequences

see http://www.wrlfmd.org/fmd_genotyping/prototypes.htm

sequence	virus name	Host	% Id.	# Ambig.	serotype	topotype	lineage	sublineage
viba_860	IRN/6/2015	cattle	95.9	0	O	ME-SA	PanAsia-2	QOM-15
viba_666	IRN/18/2010	cattle	92.9	0	O	ME-SA	PanAsia-2	BAL-09
viba_766	IRN/31/2009	cattle	91.8	0	O	ME-SA	PanAsia-2	FAR-09
viba_650	IRN/8/2005	ovine	91.3	0	O	ME-SA	PanAsia-2	
viba_719	IRN/88/2009		90.7	0	O	ME-SA	PanAsia-2	ANT-10
viba_850	NEP/1/2015	cattle	90.4	1	O	ME-SA	PanAsia-2	KAT-15
viba_491	TUR/257/2008		90.4	0	O	ME-SA	PanAsia-2	TER-08
viba_354	PAK/16/2010	cattle	90.0	0	O	ME-SA	PanAsia-2	PUN-10
viba_505	TUR/264/2009		89.4	0	O	ME-SA	PanAsia-2	SAN-09
viba_285	UKG/35/2001	porcine	89.3	0	O	ME-SA	PanAsia	

Virus sample name:	ISR/26/2019
Sender reference:	349641 (25)
Location of origin:	Daliyat al Karmel, Haifa, Haifa
Country of origin:	Israel
Date of collection:	09/05/2019
Host species:	cattle
Serotype:	O
Topotype:	ME-SA
Lineage:	PanAsia-2
Sublineage:	QOM-15
Sequence length:	633
Ambiguities:	0
Material submitted for sequencing:	BTy1
Harvest date of material:	15/06/2019
Primers:	O-1C244F/EUR-2B52R; FMD-3161F/FMD-4303R
Received for sequencing:	24/06/2019
Created:	26/06/2019
Last updated:	26/06/2019
VIBASys IDs: sample 42397, genome 42398, sequence viba_42399, sequencing info 42400	

Most Closely Related Sequences

sequence	virus name	Host	% Id.	# Ambig.	serotype	topotype	lineage	sublineage
viba_42395	ISR/25/2019	cattle	100.0	0	O	ME-SA	PanAsia-2	QOM-15
viba_41217	Tamra/340940/ISR/2019	cattle	99.8	0	O	ME-SA	PanAsia-2	QOM-15
viba_42391	ISR/24/2019	cattle	99.8	0	O	ME-SA	PanAsia-2	QOM-15
viba_42371	ISR/19/2019	cattle	99.8	0	O	ME-SA	PanAsia-2	QOM-15
viba_42327	ISR/5/2019	cattle	99.8	0	O	ME-SA	PanAsia-2	QOM-15
viba_42335	ISR/10/2019	cattle	99.8	0	O	ME-SA	PanAsia-2	QOM-15
viba_42319	ISR/3/2019	cattle	99.8	0	O	ME-SA	PanAsia-2	QOM-15
viba_42323	ISR/4/2019	cattle	99.8	0	O	ME-SA	PanAsia-2	QOM-15
viba_42331	ISR/9/2019	cattle	99.8	0	O	ME-SA	PanAsia-2	QOM-15
viba_42403	ISR/27/2019	cattle	99.7	0	O	ME-SA	PanAsia-2	QOM-15

Most Closely Related Prototype Sequences

see http://www.wrlfmd.org/fmd_genotyping/prototypes.htm

sequence	virus name	Host	% Id.	# Ambig.	serotype	topotype	lineage	sublineage
viba_860	IRN/6/2015	cattle	95.9	0	O	ME-SA	PanAsia-2	QOM-15
viba_666	IRN/18/2010	cattle	92.9	0	O	ME-SA	PanAsia-2	BAL-09
viba_766	IRN/31/2009	cattle	91.8	0	O	ME-SA	PanAsia-2	FAR-09
viba_650	IRN/8/2005	ovine	91.3	0	O	ME-SA	PanAsia-2	
viba_719	IRN/88/2009		90.7	0	O	ME-SA	PanAsia-2	ANT-10
viba_850	NEP/1/2015	cattle	90.4	1	O	ME-SA	PanAsia-2	KAT-15
viba_491	TUR/257/2008		90.4	0	O	ME-SA	PanAsia-2	TER-08
viba_354	PAK/16/2010	cattle	90.0	0	O	ME-SA	PanAsia-2	PUN-10
viba_505	TUR/264/2009		89.4	0	O	ME-SA	PanAsia-2	SAN-09
viba_285	UKG/35/2001	porcine	89.3	0	O	ME-SA	PanAsia	

Virus sample name:	ISR/27/2019
Sender reference:	349641 (26)
Location of origin:	Daliyat al Karmel, Haifa, Haifa
Country of origin:	Israel
Date of collection:	09/05/2019
Host species:	cattle
Serotype:	O
Topotype:	ME-SA
Lineage:	PanAsia-2
Sublineage:	QOM-15
Sequence length:	633
Ambiguities:	0
Material submitted for sequencing:	BTy1
Harvest date of material:	15/06/2019
Primers:	O-1C244F/EUR-2B52R; FMD-3161F/FMD-4303R
Received for sequencing:	24/06/2019
Created:	26/06/2019
Last updated:	26/06/2019
VIBASys IDs: sample 42401, genome 42402, sequence viba_42403, sequencing info 42404	

Most Closely Related Sequences

sequence	virus name	Host	% Id.	# Ambig.	serotype	topotype	lineage	sublineage
viba_42391	ISR/24/2019	cattle	99.8	0	O	ME-SA	PanAsia-2	QOM-15
viba_42395	ISR/25/2019	cattle	99.7	0	O	ME-SA	PanAsia-2	QOM-15
viba_42399	ISR/26/2019	cattle	99.7	0	O	ME-SA	PanAsia-2	QOM-15
viba_41217	Tamra/340940/ISR/2019	cattle	99.5	0	O	ME-SA	PanAsia-2	QOM-15
viba_42371	ISR/19/2019	cattle	99.5	0	O	ME-SA	PanAsia-2	QOM-15
viba_42327	ISR/5/2019	cattle	99.5	0	O	ME-SA	PanAsia-2	QOM-15
viba_42335	ISR/10/2019	cattle	99.5	0	O	ME-SA	PanAsia-2	QOM-15
viba_42319	ISR/3/2019	cattle	99.5	0	O	ME-SA	PanAsia-2	QOM-15
viba_42323	ISR/4/2019	cattle	99.5	0	O	ME-SA	PanAsia-2	QOM-15
viba_42331	ISR/9/2019	cattle	99.5	0	O	ME-SA	PanAsia-2	QOM-15

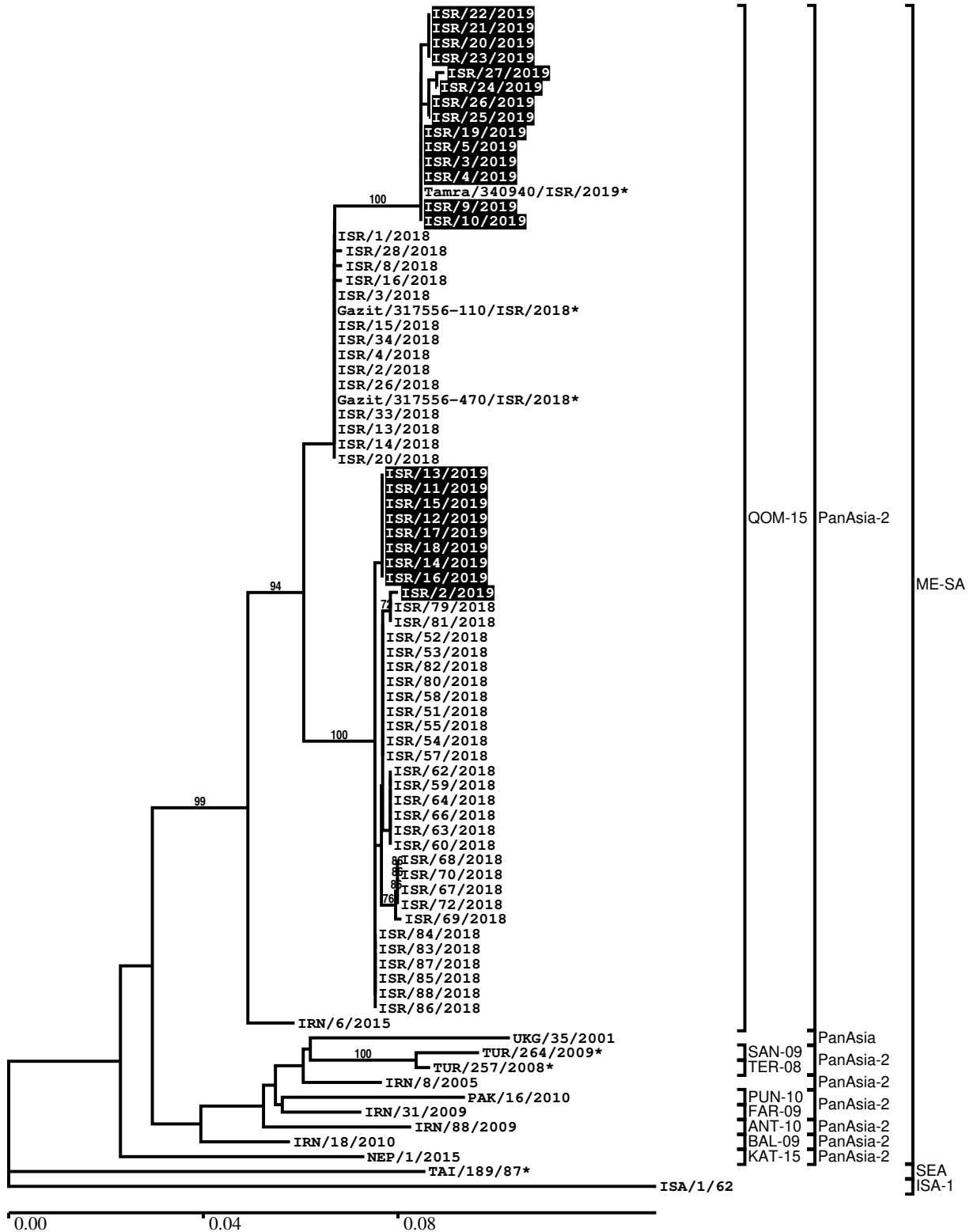
Most Closely Related Prototype Sequences

see http://www.wrlfmd.org/fmd_genotyping/prototypes.htm

sequence	virus name	Host	% Id.	# Ambig.	serotype	topotype	lineage	sublineage
viba_860	IRN/6/2015	cattle	95.9	0	O	ME-SA	PanAsia-2	QOM-15
viba_666	IRN/18/2010	cattle	92.9	0	O	ME-SA	PanAsia-2	BAL-09
viba_766	IRN/31/2009	cattle	91.8	0	O	ME-SA	PanAsia-2	FAR-09
viba_650	IRN/8/2005	ovine	91.3	0	O	ME-SA	PanAsia-2	
viba_719	IRN/88/2009		90.7	0	O	ME-SA	PanAsia-2	ANT-10
viba_850	NEP/1/2015	cattle	90.4	1	O	ME-SA	PanAsia-2	KAT-15
viba_491	TUR/257/2008		90.4	0	O	ME-SA	PanAsia-2	TER-08
viba_354	PAK/16/2010	cattle	90.0	0	O	ME-SA	PanAsia-2	PUN-10
viba_505	TUR/264/2009		89.4	0	O	ME-SA	PanAsia-2	SAN-09
viba_285	UKG/35/2001	porcine	88.9	0	O	ME-SA	PanAsia	

Report on FMDV O in Israel in 2019

Batch: WRLFMD/2019/00027



*, not a WRLFMD Reference Number

Analysis Parameters

VP1 subsequence extractor:	vp1_O
Query sequence set:	WRLFMD/2019/00027-Israel-O (23 sequences)
Sequence database set:	allseqs_O (4578 sequences)
Prototype sequence set:	!prototypes_O (49 sequences)
Number of related sequences reported:	10
Minimal VP1 subsequence match length	600
Sequence alignment method:	muscle (default parameters)
Sequence alignment length:	636
Phylogeny reconstruction method:	fdnadist, fneighbor
Number of bootstrap samples:	1000
Random seed for bootstrapping:	1
Displaying bootstrap values above:	70.0%
Number of sequences in tree capped at:	100
Number of prototype sequences in tree:	10
VIBASys version:	reflabs-1.1.2

Sequences in the Phylogenetic Tree

All sequences in the tree are in taxonomic group FMDV/O

label	accession	host(s)	lab	country	taxonomic information
ISR/22/2019	n/a	cattle	WRLFMD	Israel	ME-SA/PanAsia-2/QOM-15
ISR/21/2019	n/a	cattle	WRLFMD	Israel	ME-SA/PanAsia-2/QOM-15
ISR/20/2019	n/a	cattle	WRLFMD	Israel	ME-SA/PanAsia-2/QOM-15
ISR/23/2019	n/a	cattle	WRLFMD	Israel	ME-SA/PanAsia-2/QOM-15
ISR/27/2019	n/a	cattle	WRLFMD	Israel	ME-SA/PanAsia-2/QOM-15
ISR/24/2019	n/a	cattle	WRLFMD	Israel	ME-SA/PanAsia-2/QOM-15
ISR/26/2019	n/a	cattle	WRLFMD	Israel	ME-SA/PanAsia-2/QOM-15
ISR/25/2019	n/a	cattle	WRLFMD	Israel	ME-SA/PanAsia-2/QOM-15
ISR/19/2019	n/a	cattle	WRLFMD	Israel	ME-SA/PanAsia-2/QOM-15
ISR/5/2019	n/a	cattle	WRLFMD	Israel	ME-SA/PanAsia-2/QOM-15
ISR/3/2019	n/a	cattle	WRLFMD	Israel	ME-SA/PanAsia-2/QOM-15
ISR/4/2019	n/a	cattle	WRLFMD	Israel	ME-SA/PanAsia-2/QOM-15
Tamra/340940/ISR/2019*	n/a	cattle	KVI	Israel	ME-SA/PanAsia-2/QOM-15
ISR/9/2019	n/a	cattle	WRLFMD	Israel	ME-SA/PanAsia-2/QOM-15
ISR/10/2019	n/a	cattle	WRLFMD	Israel	ME-SA/PanAsia-2/QOM-15
ISR/1/2018	n/a	cattle	WRLFMD	Israel	ME-SA/PanAsia-2/QOM-15
ISR/28/2018	n/a	cattle	WRLFMD	Israel	ME-SA/PanAsia-2/QOM-15
ISR/8/2018	n/a	gazelle	WRLFMD	Israel	ME-SA/PanAsia-2/QOM-15
ISR/16/2018	n/a	gazelle	WRLFMD	Israel	ME-SA/PanAsia-2/QOM-15
ISR/3/2018	n/a	cattle	WRLFMD	Israel	ME-SA/PanAsia-2/QOM-15
Gazit/317556-110/ISR/2018*	n/a	cattle	KVI	Israel	ME-SA/PanAsia-2/QOM-15
ISR/15/2018	n/a	gazelle	WRLFMD	Israel	ME-SA/PanAsia-2/QOM-15
ISR/34/2018	n/a	cattle	WRLFMD	Israel	ME-SA/PanAsia-2/QOM-15
ISR/4/2018	n/a	cattle	WRLFMD	Israel	ME-SA/PanAsia-2/QOM-15
ISR/2/2018	n/a	cattle	WRLFMD	Israel	ME-SA/PanAsia-2/QOM-15
ISR/26/2018	n/a	cattle	WRLFMD	Israel	ME-SA/PanAsia-2/QOM-15
Gazit/317556-470/ISR/2018*	n/a	cattle	KVI	Israel	ME-SA/PanAsia-2/QOM-15
ISR/33/2018	n/a	cattle	WRLFMD	Israel	ME-SA/PanAsia-2/QOM-15
ISR/13/2018	n/a	gazelle	WRLFMD	Israel	ME-SA/PanAsia-2/QOM-15
ISR/14/2018	n/a	gazelle	WRLFMD	Israel	ME-SA/PanAsia-2/QOM-15
ISR/20/2018	n/a	gazelle	WRLFMD	Israel	ME-SA/PanAsia-2/QOM-15
ISR/13/2019	n/a	cattle	WRLFMD	Israel	ME-SA/PanAsia-2/QOM-15
ISR/11/2019	n/a	cattle	WRLFMD	Israel	ME-SA/PanAsia-2/QOM-15
ISR/15/2019	n/a	cattle	WRLFMD	Israel	ME-SA/PanAsia-2/QOM-15
ISR/12/2019	n/a	cattle	WRLFMD	Israel	ME-SA/PanAsia-2/QOM-15
ISR/17/2019	n/a	cattle	WRLFMD	Israel	ME-SA/PanAsia-2/QOM-15

continued on next page

label	accession	host(s)	lab	country	taxonomic information
ISR/18/2019	n/a	cattle	WRLFMD	Israel	ME-SA/PanAsia-2/QOM-15
ISR/14/2019	n/a	cattle	WRLFMD	Israel	ME-SA/PanAsia-2/QOM-15
ISR/16/2019	n/a	cattle	WRLFMD	Israel	ME-SA/PanAsia-2/QOM-15
ISR/2/2019	n/a	cattle	WRLFMD	Israel	ME-SA/PanAsia-2/QOM-15
ISR/79/2018	n/a	cattle	WRLFMD	Israel	ME-SA/PanAsia-2/QOM-15
ISR/81/2018	n/a	cattle	WRLFMD	Israel	ME-SA/PanAsia-2/QOM-15
ISR/52/2018	n/a	cattle	WRLFMD	Israel	ME-SA/PanAsia-2/QOM-15
ISR/53/2018	n/a	cattle	WRLFMD	Israel	ME-SA/PanAsia-2/QOM-15
ISR/82/2018	n/a	gazelle	WRLFMD	Israel	ME-SA/PanAsia-2/QOM-15
ISR/80/2018	n/a	gazelle	WRLFMD	Israel	ME-SA/PanAsia-2/QOM-15
ISR/58/2018	n/a	cattle	WRLFMD	Israel	ME-SA/PanAsia-2/QOM-15
ISR/51/2018	n/a	cattle	WRLFMD	Israel	ME-SA/PanAsia-2/QOM-15
ISR/55/2018	n/a	cattle	WRLFMD	Israel	ME-SA/PanAsia-2/QOM-15
ISR/54/2018	n/a	cattle	WRLFMD	Israel	ME-SA/PanAsia-2/QOM-15
ISR/57/2018	n/a	cattle	WRLFMD	Israel	ME-SA/PanAsia-2/QOM-15
ISR/62/2018	n/a	wild boar	WRLFMD	Israel	ME-SA/PanAsia-2/QOM-15
ISR/59/2018	n/a	wild boar	WRLFMD	Israel	ME-SA/PanAsia-2/QOM-15
ISR/64/2018	n/a	wild boar	WRLFMD	Israel	ME-SA/PanAsia-2/QOM-15
ISR/66/2018	n/a	wild boar	WRLFMD	Israel	ME-SA/PanAsia-2/QOM-15
ISR/63/2018	n/a	wild boar	WRLFMD	Israel	ME-SA/PanAsia-2/QOM-15
ISR/60/2018	n/a	wild boar	WRLFMD	Israel	ME-SA/PanAsia-2/QOM-15
ISR/68/2018	n/a	cattle	WRLFMD	Israel	ME-SA/PanAsia-2/QOM-15
ISR/70/2018	n/a	cattle	WRLFMD	Israel	ME-SA/PanAsia-2/QOM-15
ISR/67/2018	n/a	cattle	WRLFMD	Israel	ME-SA/PanAsia-2/QOM-15
ISR/72/2018	n/a	cattle	WRLFMD	Israel	ME-SA/PanAsia-2/QOM-15
ISR/69/2018	n/a	cattle	WRLFMD	Israel	ME-SA/PanAsia-2/QOM-15
ISR/84/2018	n/a	cattle	WRLFMD	Israel	ME-SA/PanAsia-2/QOM-15
ISR/83/2018	n/a	cattle	WRLFMD	Israel	ME-SA/PanAsia-2/QOM-15
ISR/87/2018	n/a	cattle	WRLFMD	Israel	ME-SA/PanAsia-2/QOM-15
ISR/85/2018	n/a	cattle	WRLFMD	Israel	ME-SA/PanAsia-2/QOM-15
ISR/88/2018	n/a	cattle	WRLFMD	Israel	ME-SA/PanAsia-2/QOM-15
ISR/86/2018	n/a	cattle	WRLFMD	Israel	ME-SA/PanAsia-2/QOM-15
IRN/6/2015	n/a	cattle	WRLFMD	Iran	ME-SA/PanAsia-2/QOM-15
UKG/35/2001	AJ539141	porcine	PIADC	United Kingdom	ME-SA/PanAsia
TUR/264/2009*	n/a	n/a	FMDI-Ankara	Turkey	ME-SA/PanAsia-2/SAN-09
TUR/257/2008*	n/a	n/a	FMDI-Ankara	Turkey	ME-SA/PanAsia-2/TER-08
IRN/8/2005	KY091281	ovine	WRLFMD	Iran	ME-SA/PanAsia-2
PAK/16/2010	KY091285	cattle	WRLFMD	Pakistan	ME-SA/PanAsia-2/PUN-10
IRN/31/2009	KY091284	cattle	WRLFMD	Iran	ME-SA/PanAsia-2/FAR-09
IRN/88/2009	KY091282	n/a	WRLFMD	Iran	ME-SA/PanAsia-2/ANT-10
IRN/18/2010	KY091283	cattle	WRLFMD	Iran	ME-SA/PanAsia-2/BAL-09
NEP/1/2015	n/a	cattle	WRLFMD	Nepal	ME-SA/PanAsia-2/KAT-15
TAI/189/87*	KY091288	bovine	TRRL	Thailand	SEA
ISA/1/62	AJ303500	n/a	WRLFMD	Indonesia	ISA-1

*, not a WRLFMD Reference Number

n/a, not available