

FAO World Reference Laboratory for Foot-and-Mouth Disease (WRLFMD)

Genotyping Report

FMDV serotype: Asia1
Country: Myanmar
Year: 2005
Batch: WRLMEG/2017/00056
No. of sequences: 1
Report date: 8th November 2017
Report generated by: Nick Knowles
Report checked by: Kasia Bankowska



Copyright © 2017 The Pirbright Institute, Ash Road, Pirbright, Woking GU24 0NF, United Kingdom.

www: <http://www.wrlfmd.org/>

email: reporting@pirbright.ac.uk

The contents of this report should not be reproduced without permission.

Virus sample name:	MYA26/2017_2005
Sender reference:	MYA26/2017_2005
Location of origin:	Htay Ngwa Hlar Village, Loikaw Township, Kayah State/Region
Country of origin:	Myanmar
Date of collection:	03/08/2005
Host species:	
Serotype:	Asia1
Topotype:	ASIA
Lineage:	
Sublineage:	
Sequence length:	627
Ambiguities:	0
Material submitted for sequencing:	n/a
Harvest date of material:	n/a
Primers:	n/a
Received for sequencing:	n/a
Created:	08/11/2017
Last updated:	08/11/2017
VIBASys IDs: sample 35234, genome 35235, sequence viba_35236, sequencing info 35237	

Most Closely Related Sequences

sequence	virus name	Host	% Id.	# Ambig.	serotype	topotype	lineage	sublineage
viba_28591	TAI/5/96		92.8	0	Asia1	ASIA		
viba_2379	LAO/3/98		92.7	0	Asia1	ASIA		
viba_28583	Petchaburi/TAI/85	cattle	92.5	0	Asia1	ASIA		
viba_28587	TAI/87		92.4	0	Asia1	ASIA		
viba_2412	TAI/1/98		91.9	1	Asia1	ASIA		
viba_28407	HKN/18/76		91.9	0	Asia1	ASIA		
viba_28527	LAO/1/96		91.9	0	Asia1	ASIA		
viba_28403	HKN/24/75		91.6	0	Asia1	ASIA		
viba_8473	BR/MYA/003/2006	bovine	91.4	0	Asia1	ASIA		
viba_1711	HKN/2/75	cattle	91.4	0	Asia1	ASIA		

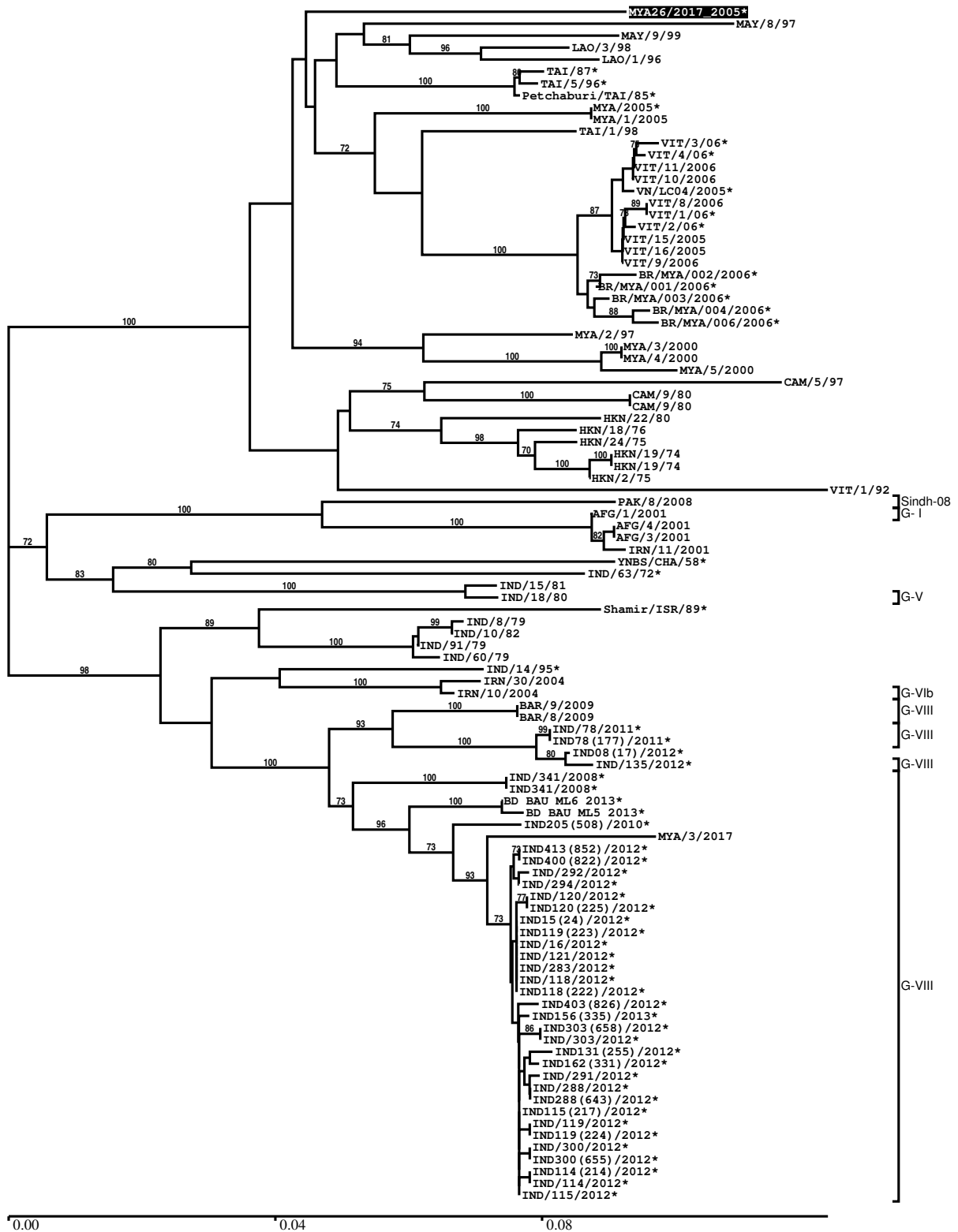
Most Closely Related Prototype Sequences

see http://www.wrlfmd.org/fmd_genotyping/prototypes.htm

sequence	virus name	Host	% Id.	# Ambig.	serotype	topotype	lineage	sublineage
viba_646	HKN/19/74	bovine	91.1	0	Asia1	ASIA		
viba_12154	BAR/8/2009	cattle	86.0	0	Asia1	ASIA	G-VIII	
viba_737	IND/18/80	bovine	85.8	0	Asia1	ASIA	G-V	
viba_167	AFG/1/2001	bovine	85.7	0	Asia1	ASIA	G-I	
viba_775	IRN/10/2004	cattle	85.1	0	Asia1	ASIA	G-VIb	
viba_161	IND/14/95	bovine	84.8	0	Asia1	ASIA		
viba_146	Shamir/ISR/89	bovine	84.4	0	Asia1	ASIA		
viba_297	IND/63/72		84.3	0	Asia1	ASIA		
viba_206	PAK/8/2008	water buffalo	83.6	0	Asia1	ASIA	Sindh-08	
viba_551	YNBS/CHA/58	bovine	83.6	0	Asia1	ASIA		

Report on FMDV Asia1 in Myanmar in 2005

Batch: WRLMEG/2017/00056



*, not a WRLFMD Reference Number

Analysis Parameters

VP1 subsequence extractor:	vp1_Asia1
Query sequence set:	WRLMEG/2017/00056-Myanmar-Asia1 (1 sequences)
Sequence database set:	allseqs_Asia1 (541 sequences)
Prototype sequence set:	!prototypes_Asia1 (12 sequences)
Number of related sequences reported:	10
Minimal VP1 subsequence match length	600
Sequence alignment method:	muscle (default parameters)
Sequence alignment length:	627
Phylogeny reconstruction method:	fdnadist, fneighbor
Number of bootstrap samples:	1000
Random seed for bootstrapping:	1
Displaying bootstrap values above:	70.0%
Number of sequences in tree capped at:	100
Number of prototype sequences in tree:	10
VIBASys version:	reflabs-1.1.2

Sequences in the Phylogenetic Tree

All sequences in the tree are in taxonomic group FMDV/Asia1/ASIA

label	accession	host(s)	lab	country	taxonomic information
MYA26/2017_2005*	n/a	n/a	n/a	Myanmar	
MAY/8/97	FJ785250	n/a	WRLFMD	Malaysia	
MAY/9/99	FJ785251	n/a	WRLFMD	Malaysia	
LAO/3/98	EU667461	n/a	WRLFMD	Laos	
LAO/1/96	EU667460	n/a	WRLFMD	Laos	
TAI/87*	n/a	n/a	WRLFMD	Thailand	
TAI/5/96*	n/a	n/a	BFAV	Thailand	
Petchaburi/TAI/85*	n/a	cattle	WRLFMD	Thailand	
MYA/2005*	FJ785257	n/a	TRRL	Myanmar	
MYA/1/2005	FJ785258	n/a	WRLFMD	Myanmar	
TAI/1/98	DQ121129	n/a	WRLFMD	Thailand	
VIT/3/06*	FJ785288	water buffalo	TRRL	Vietnam	
VIT/4/06*	FJ785290	water buffalo	TRRL	Vietnam	
VIT/11/2006	FJ785289	water buffalo	WRLFMD	Vietnam	
VIT/10/2006	FJ785287	water buffalo	WRLFMD	Vietnam	
VN/LC04/2005*	GU125646	water buffalo	n/a	Vietnam	
VIT/8/2006	FJ785283	cattle	WRLFMD	Vietnam	
VIT/1/06*	FJ785284	n/a	TRRL	Vietnam	
VIT/2/06*	FJ785286	n/a	TRRL	Vietnam	
VIT/15/2005	FJ785281	cattle	WRLFMD	Vietnam	
VIT/16/2005	FJ785282	cattle	WRLFMD	Vietnam	
VIT/9/2006	FJ785285	cattle	WRLFMD	Vietnam	
BR/MYA/002/2006*	EU091343	bovine	n/a	China	
BR/MYA/001/2006*	EU091342	bovine	n/a	China	
BR/MYA/003/2006*	EU091344	bovine	n/a	China	
BR/MYA/004/2006*	EU091345	bovine	n/a	China	
BR/MYA/006/2006*	EU091347	bovine	n/a	China	
MYA/2/97	FJ785253	n/a	WRLFMD	Myanmar	
MYA/3/2000	FJ785254	n/a	WRLFMD	Myanmar	
MYA/4/2000	FJ785255	n/a	WRLFMD	Myanmar	
MYA/5/2000	FJ785256	n/a	WRLFMD	Myanmar	
CAM/5/97	FJ785229	n/a	WRLFMD	Cambodia	
CAM/9/80	n/a	n/a	WRLFMD	Cambodia	
CAM/9/80	FJ785228	n/a	WRLFMD	Cambodia	
HKN/22/80	FJ785234	n/a	WRLFMD	Hong Kong SAR	

continued on next page

label	accession	host(s)	lab	country	taxonomic information
HKN/18/76	FJ785233	n/a	WRLFMD	Hong Kong SAR	
HKN/24/75	FJ785232	n/a	WRLFMD	Hong Kong SAR	
HKN/19/74	FJ785230	bovine	WRLFMD	Hong Kong SAR	
HKN/19/74	n/a	bovine	WRLFMD	Hong Kong SAR	
HKN/2/75	FJ785231	cattle	WRLFMD	Hong Kong SAR	
VIT/1/92	FJ785280	n/a	WRLFMD	Vietnam	
PAK/8/2008	KY091304	water buffalo	WRLFMD	Pakistan	Sindh-08
AFG/1/2001	DQ121109	bovine	WRLFMD	Afghanistan	G- I
AFG/4/2001	DQ121110	n/a	WRLFMD	Afghanistan	
AFG/3/2001	FJ785227	n/a	WRLFMD	Afghanistan	
IRN/11/2001	FJ785243	n/a	WRLFMD	Iran	
YNBS/CHA/58*	AY390432	bovine	LVRI	China	
IND/63/72*	AY304994	n/a	IVRI-Bangalore	India	
IND/15/81	DQ121117	n/a	WRLFMD	India	
IND/18/80	DQ121116	bovine	WRLFMD	India	G-V
Shamir/ISR/89*	n/a	bovine	BFAV	Israel	
IND/8/79	EU553910	n/a	WRLFMD	India	
IND/10/82	n/a	n/a	WRLFMD	India	
IND/9/1/79	n/a	n/a	WRLFMD	India	
IND/60/79	n/a	n/a	WRLFMD	India	
IND/14/95*	AF390678	bovine	PD-FMD	India	
IRN/30/2004	FJ785246	n/a	WRLFMD	Iran	
IRN/10/2004	DQ121119	cattle	WRLFMD	Iran	G-VIb
BAR/9/2009	n/a	cattle	WRLFMD	Bahrain	G-VIII
BAR/8/2009	n/a	cattle	WRLFMD	Bahrain	G-VIII
IND/78/2011*	KF570660	cattle	PD-FMD	India	G-VIII
IND78(177)/2011*	KT153338	cattle	PD-FMD	India	G-VIII
IND08(17)/2012*	KT153366	cattle	PD-FMD	India	
IND/135/2012*	KF570674	cattle	PD-FMD	India	G-VIII
IND/341/2008*	KF570653	cattle	PD-FMD	India	G-VIII
IND341/2008*	KT153324	cattle	PD-FMD	India	G-VIII
BD BAU ML6 2013*	KU159762	cattle	BAU	Bangladesh	G-VIII
BD BAU ML5 2013*	KU159763	cattle	BAU	Bangladesh	G-VIII
IND205(508)/2010*	KT153327	cattle	PD-FMD	India	G-VIII
MYA/3/2017	n/a	cattle	WRLFMD	Myanmar	G-VIII
IND413(852)/2012*	KT153354	cattle	PD-FMD	India	G-VIII
IND400(822)/2012*	KT153349	cattle	PD-FMD	India	G-VIII
IND/292/2012*	KF570679	cattle	PD-FMD	India	G-VIII
IND/294/2012*	KF570680	cattle	PD-FMD	India	G-VIII
IND/120/2012*	KF570672	water buffalo	PD-FMD	India	G-VIII
IND120(225)/2012*	KT153357	water buffalo	PD-FMD	India	G-VIII
IND15(24)/2012*	KT153363	cattle	PD-FMD	India	G-VIII
IND119(223)/2012*	KT153342	cattle	PD-FMD	India	G-VIII
IND/16/2012*	KF570666	cattle	PD-FMD	India	G-VIII
IND/121/2012*	KF570673	cattle	PD-FMD	India	G-VIII
IND/283/2012*	KF570675	cattle	PD-FMD	India	G-VIII
IND/118/2012*	KF570670	cattle	PD-FMD	India	G-VIII
IND118(222)/2012*	KT153358	cattle	PD-FMD	India	G-VIII
IND403(826)/2012*	KT153350	cattle	PD-FMD	India	G-VIII
IND156(335)/2013*	KT153367	cattle	PD-FMD	India	G-VIII
IND303(658)/2012*	KT153348	cattle	PD-FMD	India	G-VIII
IND/303/2012*	KF570682	cattle	PD-FMD	India	G-VIII
IND131(255)/2012*	KT153362	cattle	PD-FMD	India	G-VIII
IND162(331)/2012*	KT153343	cattle	PD-FMD	India	G-VIII
IND/291/2012*	KF570678	cattle	PD-FMD	India	G-VIII
IND/288/2012*	KF570677	cattle	PD-FMD	India	G-VIII
IND288(643)/2012*	KT153346	cattle	PD-FMD	India	G-VIII
IND115(217)/2012*	KT153359	cattle	PD-FMD	India	G-VIII
IND/119/2012*	KF570671	cattle	PD-FMD	India	G-VIII
IND119(224)/2012*	KT153356	cattle	PD-FMD	India	G-VIII
IND/300/2012*	KF570681	cattle	PD-FMD	India	G-VIII
IND300(655)/2012*	KT153347	cattle	PD-FMD	India	G-VIII

continued on next page

label	accession	host(s)	lab	country	taxonomic information
IND114(214)/2012*	KT153361	cattle	PD-FMD	India	G-VIII
IND/114/2012*	KF570668	cattle	PD-FMD	India	G-VIII
IND/115/2012*	KF570669	water buffalo	PD-FMD	India	G-VIII

*, not a WRLFMD Reference Number

n/a, not available