

FAO World Reference Laboratory for Foot-and-Mouth Disease (WRLFMD)

Genotyping Report

FMDV serotype: A
Country: Egypt
Year: 2017
Batch: WRLMEG/2018/00004
No. of sequences: 1
Report date: 16th January 2018
Report generated by: Nick Knowles
Report checked by: Kasia Bankowska



Copyright © 2018 The Pirbright Institute, Ash Road, Pirbright, Woking GU24 0NF, United Kingdom.

www: <http://www.wrlfmd.org/>

email: reporting@pirbright.ac.uk

The contents of this report should not be reproduced without permission.

Sequences were retrieved from GenBank on 15/01/2018.

They were submitted to GenBank on the 09/06/2017 by Soltan, M.A., Bazid, A., Mandour, M.F., Wasfy, M. and El-Sayed, M., Research and Development, Middle East Vaccine company (MEVAC), 20, Joseph Tito St., El Nozha El Gededa., Heliopolis, Cairo. 11111, Egypt.

Virus sample name:	Beni-suef 1/Egy/2017
Sender reference:	Beni-suef1/Egy/2017
Location of origin:	Beni-suef
Country of origin:	Egypt
Date of collection:	2017
Host species:	
Serotype:	A
Topotype:	AFRICA
Lineage:	G-IV
Sublineage:	
Sequence length:	633
Ambiguities:	0
Material submitted for sequencing:	n/a
Harvest date of material:	n/a
Primers:	n/a
Received for sequencing:	n/a
Created:	15/01/2018
Last updated:	15/01/2018
VIBASys IDs: sample 35471, genome 35472, sequence viba_35473, sequencing info 35474	

Most Closely Related Sequences

sequence	virus name	Host	% Id.	# Ambig.	serotype	topotype	lineage	sublineage
viba_34155	EGY/19/2016	cattle	99.5	0	A	AFRICA	G-IV	
viba_30358	Ismailia 4/Egy/2016	cattle	98.7	0	A	AFRICA	G-IV	
viba_29562	EGY/3/2016	cattle	98.7	0	A	AFRICA	G-IV	
viba_29558	EGY/8/2015	cattle	98.7	0	A	AFRICA	G-IV	
viba_30354	Ismailia 3/Egy/2016	cattle	98.7	0	A	AFRICA	G-IV	
viba_30362	Giza 1/Egy/2016	cattle	98.7	0	A	AFRICA	G-IV	
viba_30350	Ismailia 2/Egy/2016	cattle	98.7	0	A	AFRICA	G-IV	
viba_30346	Ismailia 1/Egy/2016	cattle	98.6	0	A	AFRICA	G-IV	
viba_25918	ETH/19/2015	bovine	97.0	0	A	AFRICA	G-IV	
viba_17207	SUD/12/2011	cattle	88.5	0	A	AFRICA	G-IV	

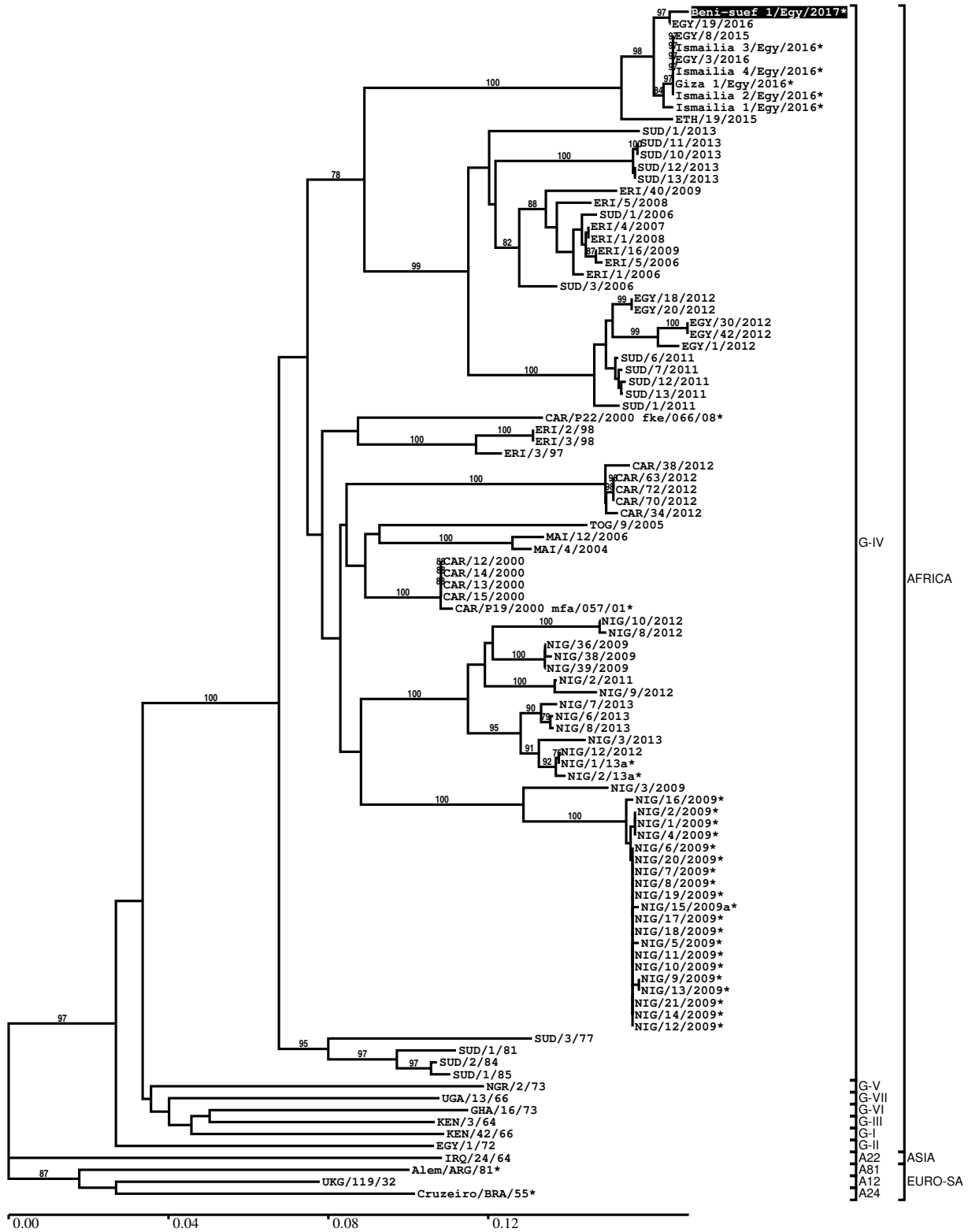
Most Closely Related Prototype Sequences

see http://www.wrlfmd.org/fmd_genotyping/prototypes.htm

sequence	virus name	Host	% Id.	# Ambig.	serotype	topotype	lineage	sublineage
viba_178	SUD/3/77		84.4	0	A	AFRICA	G-IV	
viba_347	KEN/42/66		84.0	0	A	AFRICA	G-I	
viba_535	NGR/2/73	bovine	82.6	0	A	AFRICA	G-V	
viba_609	GHA/16/73	bovine	82.2	0	A	AFRICA	G-VI	
viba_688	EGY/1/72	bovine	81.6	0	A	AFRICA	G-II	
viba_785	KEN/3/64		81.2	0	A	AFRICA	G-III	
viba_173	UGA/13/66	bovine	80.8	0	A	AFRICA	G-VII	
viba_699	UKG/119/32		80.5	0	A	EURO-SA	A12	
viba_217	Cruzeiro/BRA/55	bovine	79.5	0	A	EURO-SA	A24	
viba_98	Alem/ARG/81		79.4	0	A	EURO-SA	A81	

Report on FMDV A in Egypt in 2017

Batch: WRLMEG/2018/00004



*, not a WRLFMD Reference Number

Analysis Parameters

VP1 subsequence extractor: vp1_A
 Query sequence set: WRLMEG/2018/00004-Egypt-A (1 sequences)
 Sequence database set: allseqs_A (1775 sequences)
 Prototype sequence set: !prototypes_A (40 sequences)
 Number of related sequences reported: 10
 Minimal VP1 subsequence match length: 600
 Sequence alignment method: muscle (default parameters)
 Sequence alignment length: 633
 Phylogeny reconstruction method: fdnadist, fneighbor
 Number of bootstrap samples: 1000
 Random seed for bootstrapping: 1
 Displaying bootstrap values above: 70.0%
 Number of sequences in tree capped at: 100
 Number of prototype sequences in tree: 10
 VIBASys version: reflabs-1.1.2

Sequences in the Phylogenetic Tree

All sequences in the tree are in taxonomic group FMDV/A

label	accession	host(s)	lab	country	taxonomic information
Beni-suef 1/Egy/2017*	MF322693	n/a	MEVAC	Egypt	AFRICA/G-IV
EGY/19/2016	n/a	cattle	WRLFMD	Egypt	AFRICA/G-IV
EGY/8/2015	n/a	cattle	WRLFMD	Egypt	AFRICA/G-IV
Ismailia 3/Egy/2016*	KX446998	cattle	Suez Canal Univ	Egypt	AFRICA/G-IV
EGY/3/2016	n/a	cattle	WRLFMD	Egypt	AFRICA/G-IV
Ismailia 4/Egy/2016*	KX446999	cattle	Suez Canal Univ	Egypt	AFRICA/G-IV
Giza 1/Egy/2016*	KX447000	cattle	Suez Canal Univ	Egypt	AFRICA/G-IV
Ismailia 2/Egy/2016*	KX446997	cattle	Suez Canal Univ	Egypt	AFRICA/G-IV
Ismailia 1/Egy/2016*	KX446996	cattle	Suez Canal Univ	Egypt	AFRICA/G-IV
ETH/19/2015	n/a	bovine	WRLFMD	Ethiopia	AFRICA/G-IV
SUD/1/2013	n/a	cattle	WRLFMD	Sudan	AFRICA/G-IV
SUD/11/2013	n/a	cattle	WRLFMD	Sudan	AFRICA/G-IV
SUD/10/2013	n/a	cattle	WRLFMD	Sudan	AFRICA/G-IV
SUD/12/2013	n/a	cattle	WRLFMD	Sudan	AFRICA/G-IV
SUD/13/2013	n/a	cattle	WRLFMD	Sudan	AFRICA/G-IV
ERI/40/2009	n/a	cattle	WRLFMD	Eritrea	AFRICA/G-IV
ERI/5/2008	n/a	cattle	WRLFMD	Eritrea	AFRICA/G-IV
SUD/1/2006	GU566069	cattle	WRLFMD	Sudan	AFRICA/G-IV
ERI/4/2007	n/a	cattle	WRLFMD	Eritrea	AFRICA/G-IV
ERI/1/2008	n/a	cattle	WRLFMD	Eritrea	AFRICA/G-IV
ERI/16/2009	n/a	cattle	WRLFMD	Eritrea	AFRICA/G-IV
ERI/5/2006	n/a	cattle	WRLFMD	Eritrea	AFRICA/G-IV
ERI/1/2006	KX258046	cattle	WRLFMD	Eritrea	AFRICA/G-IV
SUD/3/2006	GU566070	cattle	WRLFMD	Sudan	AFRICA/G-IV
EGY/18/2012	n/a	cattle	WRLFMD	Egypt	AFRICA/G-IV
EGY/20/2012	n/a	cattle	WRLFMD	Egypt	AFRICA/G-IV
EGY/30/2012	n/a	cattle	WRLFMD	Egypt	AFRICA/G-IV
EGY/42/2012	n/a	cattle	WRLFMD	Egypt	AFRICA/G-IV
EGY/1/2012	n/a	n/a	WRLFMD	Egypt	AFRICA/G-IV
SUD/6/2011	n/a	cattle	WRLFMD	Sudan	AFRICA/G-IV
SUD/7/2011	n/a	cattle	WRLFMD	Sudan	AFRICA/G-IV
SUD/12/2011	n/a	cattle	WRLFMD	Sudan	AFRICA/G-IV

continued on next page

label	accession	host(s)	lab	country	taxonomic information
SUD/13/2011	n/a	cattle	WRLFMD	Sudan	AFRICA/G-IV
SUD/1/2011	n/a	cattle	WRLFMD	Sudan	AFRICA/G-IV
CAR/P22/2000 fke/066/08*	n/a	n/a	WRLFMD	Cameroon	AFRICA/G-IV
ERI/2/98	KX258044	n/a	WRLFMD	Eritrea	AFRICA/G-IV
ERI/3/98	KX258045	n/a	WRLFMD	Eritrea	AFRICA/G-IV
ERI/3/97	KX258043	n/a	WRLFMD	Eritrea	AFRICA/G-IV
CAR/38/2012	KX266276	bovine	WRLFMD	Cameroon	AFRICA/G-IV
CAR/63/2012	KX266280	bovine	WRLFMD	Cameroon	AFRICA/G-IV
CAR/72/2012	KX266282	bovine	WRLFMD	Cameroon	AFRICA/G-IV
CAR/70/2012	KX266281	bovine	WRLFMD	Cameroon	AFRICA/G-IV
CAR/34/2012	KX266275	bovine	WRLFMD	Cameroon	AFRICA/G-IV
TOG/9/2005	KX258062	cattle	n/a	Togo	AFRICA/G-IV
MAI/12/2006	KX258048	n/a	WRLFMD	Mali	AFRICA/G-IV
MAI/4/2004	KX258047	cattle	n/a	Mali	AFRICA/G-IV
CAR/12/2000	KX258130	n/a	WRLFMD	Cameroon	AFRICA/G-IV
CAR/14/2000	KX258132	n/a	WRLFMD	Cameroon	AFRICA/G-IV
CAR/13/2000	KX258131	n/a	WRLFMD	Cameroon	AFRICA/G-IV
CAR/15/2000	EF208755	n/a	WRLFMD	Cameroon	AFRICA/G-IV
CAR/P19/2000 mfa/057/01*	n/a	n/a	WRLFMD	Cameroon	AFRICA/G-IV
NIG/10/2012	KX258056	bovine	WRLFMD	Nigeria	AFRICA/G-IV
NIG/8/2012	KX258054	bovine	WRLFMD	Nigeria	AFRICA/G-IV
NIG/36/2009	KX258050	cattle	WRLFMD	Nigeria	AFRICA/G-IV
NIG/38/2009	KX258051	cattle	WRLFMD	Nigeria	AFRICA/G-IV
NIG/39/2009	KX258052	cattle	WRLFMD	Nigeria	AFRICA/G-IV
NIG/2/2011	KX258053	bovine	WRLFMD	Nigeria	AFRICA/G-IV
NIG/9/2012	KX258055	bovine	WRLFMD	Nigeria	AFRICA/G-IV
NIG/7/2013	KX258060	bovine	WRLFMD	Nigeria	AFRICA/G-IV
NIG/6/2013	KX258059	bovine	WRLFMD	Nigeria	AFRICA/G-IV
NIG/8/2013	KX258061	bovine	WRLFMD	Nigeria	AFRICA/G-IV
NIG/3/2013	KX258058	bovine	WRLFMD	Nigeria	AFRICA/G-IV
NIG/12/2012	KX258057	bovine	WRLFMD	Nigeria	AFRICA/G-IV
NIG/1/13a*	KY584070	bovine	CODA-CERVA	Nigeria	AFRICA/G-IV
NIG/2/13a*	KY584071	bovine	CODA-CERVA	Nigeria	AFRICA/G-IV
NIG/3/2009	KX258049	cattle	WRLFMD	Nigeria	AFRICA/G-IV
NIG/16/2009*	JN680724	cattle	PIADC	Nigeria	AFRICA/G-IV
NIG/2/2009*	JN680710	cattle	PIADC	Nigeria	AFRICA/G-IV
NIG/1/2009*	JN680709	cattle	PIADC	Nigeria	AFRICA/G-IV
NIG/4/2009*	JN680712	cattle	PIADC	Nigeria	AFRICA/G-IV
NIG/6/2009*	JN680714	cattle	PIADC	Nigeria	AFRICA/G-IV
NIG/20/2009*	JN680728	cattle	PIADC	Nigeria	AFRICA/G-IV
NIG/7/2009*	JN680715	cattle	PIADC	Nigeria	AFRICA/G-IV
NIG/8/2009*	JN680716	cattle	PIADC	Nigeria	AFRICA/G-IV
NIG/19/2009*	JN680727	cattle	PIADC	Nigeria	AFRICA/G-IV
NIG/15/2009a*	JN680723	cattle	PIADC	Nigeria	AFRICA/G-IV
NIG/17/2009*	JN680725	cattle	PIADC	Nigeria	AFRICA/G-IV
NIG/18/2009*	JN680726	cattle	PIADC	Nigeria	AFRICA/G-IV
NIG/5/2009*	JN680713	cattle	PIADC	Nigeria	AFRICA/G-IV
NIG/11/2009*	JN680719	cattle	PIADC	Nigeria	AFRICA/G-IV
NIG/10/2009*	JN680718	cattle	PIADC	Nigeria	AFRICA/G-IV
NIG/9/2009*	JN680717	cattle	PIADC	Nigeria	AFRICA/G-IV
NIG/13/2009*	JN680721	cattle	PIADC	Nigeria	AFRICA/G-IV
NIG/21/2009*	JN680729	cattle	PIADC	Nigeria	AFRICA/G-IV
NIG/14/2009*	JN680722	cattle	PIADC	Nigeria	AFRICA/G-IV
NIG/12/2009*	JN680720	cattle	PIADC	Nigeria	AFRICA/G-IV
SUD/3/77	GU566064	n/a	WRLFMD	Sudan	AFRICA/G-IV
SUD/1/81	GU566065	n/a	WRLFMD	Sudan	AFRICA/G-IV
SUD/2/84	GU566067	n/a	WRLFMD	Sudan	AFRICA/G-IV
SUD/1/85	GU566068	n/a	WRLFMD	Sudan	AFRICA/G-IV
NGR/2/73	KF561704	bovine	WRLFMD	Niger	AFRICA/G-V
UGA/13/66	KF561705	bovine	WRLFMD	Uganda	AFRICA/G-VII
GHA/16/73	KF561698	bovine	WRLFMD	Ghana	AFRICA/G-VI
KEN/3/64	AY593761	n/a	PIADC	Kenya	AFRICA/G-III
KEN/42/66	KF561699	n/a	WRLFMD	Kenya	AFRICA/G-I
EGY/1/72	EF208756	bovine	WRLFMD	Egypt	AFRICA/G-II
IRQ/24/64	AY593763	bovine	PIADC	Iraq	ASIA/A22
Alem/ARG/81*	AJ306219	n/a	INTA-Argentina	Argentina	EURO-SA/A81

continued on next page

label	accession	host(s)	lab	country	taxonomic information
UKG/119/32	M10975	n/a	PIADC	United Kingdom	EURO-SA/A12
Cruzeiro/BRA/55*	AY593768	bovine	PIADC	Brazil	EURO-SA/A24

*, not a WRLFMD Reference Number

n/a, not available