

FAO World Reference Laboratory for Foot-and-Mouth Disease (WRLFMD)

Genotyping Report

FMDV serotype: O
Country: Nepal
Year: 2020, 2021
Batch: WRLFMD/2021/00013
No. of sequences: 38
Report date: 12th November 2021
Report generated by: Nick Knowles
Report checked by: Jemma Wadsworth



Copyright © 2021 The Pirbright Institute, Ash Road, Pirbright, Woking GU24 0NF, United Kingdom.

www: <http://www.wrlfmd.org/>

email: reporting@pirbright.ac.uk

The contents of this report should not be reproduced without permission.

Virus sample name:	NEP/10/2020
Sender reference:	21 Np FMD
Location of origin:	Kaski
Country of origin:	Nepal
Date of collection:	20/12/2020
Host species:	bovine
Serotype:	O
Topotype:	ME-SA
Lineage:	Ind-2001
Sublineage:	e
Sequence length:	633
Ambiguities:	0
Material submitted for sequencing:	WRL-LFBK1
Harvest date of material:	05/10/2021
Primers:	O-1C244F/EUR-2B52R, FMD-3161F/FMD-4303R
Received for sequencing:	02/11/2021
Created:	12/11/2021
Last updated:	12/11/2021
VIBASys IDs: sample 48866, genome 48867, sequence viba_48868, sequencing info 48869	

Most Closely Related Sequences

sequence	virus name	Host	% Id.	# Ambig.	serotype	topotype	lineage	sublineage
viba_48972	NEP/32/2021	bovine	100.0	0	O	ME-SA	Ind-2001	e
viba_48884	NEP/14/2020	water buffalo	100.0	0	O	ME-SA	Ind-2001	e
viba_48872	NEP/11/2020	bovine	100.0	0	O	ME-SA	Ind-2001	e
viba_48876	NEP/12/2020	bovine	100.0	0	O	ME-SA	Ind-2001	e
viba_48936	NEP/23/2021	bovine	100.0	0	O	ME-SA	Ind-2001	e
viba_48880	NEP/13/2020	bovine	100.0	0	O	ME-SA	Ind-2001	e
viba_48920	NEP/15/2021	bovine	99.8	0	O	ME-SA	Ind-2001	e
viba_48924	NEP/19/2021	water buffalo	99.8	0	O	ME-SA	Ind-2001	e
viba_48968	NEP/31/2021	bovine	99.8	0	O	ME-SA	Ind-2001	e
viba_48956	NEP/28/2021	bovine	99.8	0	O	ME-SA	Ind-2001	e

Most Closely Related Prototype Sequences

see <http://www.wrlfmd.org/fmdv-genome/fmd-prototype-strains>

sequence	virus name	Host	% Id.	# Ambig.	serotype	topotype	lineage	sublineage
viba_30238	MUR/19/2016	cattle	96.4	0	O	ME-SA	Ind-2001	e
viba_293	BHU/3/2009	cattle	93.4	0	O	ME-SA	Ind-2001	d
viba_541	OMN/7/2001	bovine	92.1	0	O	ME-SA	Ind-2001	b
viba_705	KUW/3/97	bovine	91.5	0	O	ME-SA	Ind-2001	a
viba_397	UAE/4/2008	gazelle	90.5	0	O	ME-SA	Ind-2001	c
viba_285	UKG/35/2001	porcine	89.6	0	O	ME-SA	PanAsia	
viba_766	IRN/31/2009	cattle	89.3	0	O	ME-SA	PanAsia-2	FAR-09
viba_650	IRN/8/2005	ovine	89.1	0	O	ME-SA	PanAsia-2	
viba_666	IRN/18/2010	cattle	88.8	0	O	ME-SA	PanAsia-2	BAL-09
viba_719	IRN/88/2009		88.6	0	O	ME-SA	PanAsia-2	ANT-10

Virus sample name:	NEP/11/2020
Sender reference:	22 Np FMD
Location of origin:	Kaski
Country of origin:	Nepal
Date of collection:	20/12/2020
Host species:	bovine
Serotype:	O
Topotype:	ME-SA
Lineage:	Ind-2001
Sublineage:	e
Sequence length:	633
Ambiguities:	0
Material submitted for sequencing:	WRL-LFBK2
Harvest date of material:	09/10/2021
Primers:	O-1C244F/EUR-2B52R, FMD-3161F/FMD-4303R
Received for sequencing:	02/11/2021
Created:	12/11/2021
Last updated:	12/11/2021
VIBASys IDs: sample 48870, genome 48871, sequence viba_48872, sequencing info 48873	

Most Closely Related Sequences

sequence	virus name	Host	% Id.	# Ambig.	serotype	topotype	lineage	sublineage
viba_48972	NEP/32/2021	bovine	100.0	0	O	ME-SA	Ind-2001	e
viba_48884	NEP/14/2020	water buffalo	100.0	0	O	ME-SA	Ind-2001	e
viba_48876	NEP/12/2020	bovine	100.0	0	O	ME-SA	Ind-2001	e
viba_48936	NEP/23/2021	bovine	100.0	0	O	ME-SA	Ind-2001	e
viba_48880	NEP/13/2020	bovine	100.0	0	O	ME-SA	Ind-2001	e
viba_48868	NEP/10/2020	bovine	100.0	0	O	ME-SA	Ind-2001	e
viba_48920	NEP/15/2021	bovine	99.8	0	O	ME-SA	Ind-2001	e
viba_48924	NEP/19/2021	water buffalo	99.8	0	O	ME-SA	Ind-2001	e
viba_48968	NEP/31/2021	bovine	99.8	0	O	ME-SA	Ind-2001	e
viba_48956	NEP/28/2021	bovine	99.8	0	O	ME-SA	Ind-2001	e

Most Closely Related Prototype Sequences

see <http://www.wrlfmd.org/fmdv-genome/fmd-prototype-strains>

sequence	virus name	Host	% Id.	# Ambig.	serotype	topotype	lineage	sublineage
viba_30238	MUR/19/2016	cattle	96.4	0	O	ME-SA	Ind-2001	e
viba_293	BHU/3/2009	cattle	93.4	0	O	ME-SA	Ind-2001	d
viba_541	OMN/7/2001	bovine	92.1	0	O	ME-SA	Ind-2001	b
viba_705	KUW/3/97	bovine	91.5	0	O	ME-SA	Ind-2001	a
viba_397	UAE/4/2008	gazelle	90.5	0	O	ME-SA	Ind-2001	c
viba_285	UKG/35/2001	porcine	89.6	0	O	ME-SA	PanAsia	
viba_766	IRN/31/2009	cattle	89.3	0	O	ME-SA	PanAsia-2	FAR-09
viba_650	IRN/8/2005	ovine	89.1	0	O	ME-SA	PanAsia-2	
viba_666	IRN/18/2010	cattle	88.8	0	O	ME-SA	PanAsia-2	BAL-09
viba_719	IRN/88/2009		88.6	0	O	ME-SA	PanAsia-2	ANT-10

Virus sample name:	NEP/12/2020
Sender reference:	23 Np FMD
Location of origin:	Kaski
Country of origin:	Nepal
Date of collection:	20/12/2020
Host species:	bovine
Serotype:	O
Topotype:	ME-SA
Lineage:	Ind-2001
Sublineage:	e
Sequence length:	633
Ambiguities:	0
Material submitted for sequencing:	WRL-LFBK1
Harvest date of material:	05/10/2021
Primers:	O-1C244F/EUR-2B52R, FMD-3161F/FMD-4303R
Received for sequencing:	02/11/2021
Created:	12/11/2021
Last updated:	12/11/2021
VIBASys IDs: sample 48874, genome 48875, sequence viba_48876, sequencing info 48877	

Most Closely Related Sequences

sequence	virus name	Host	% Id.	# Ambig.	serotype	topotype	lineage	sublineage
viba_48972	NEP/32/2021	bovine	100.0	0	O	ME-SA	Ind-2001	e
viba_48884	NEP/14/2020	water buffalo	100.0	0	O	ME-SA	Ind-2001	e
viba_48872	NEP/11/2020	bovine	100.0	0	O	ME-SA	Ind-2001	e
viba_48936	NEP/23/2021	bovine	100.0	0	O	ME-SA	Ind-2001	e
viba_48880	NEP/13/2020	bovine	100.0	0	O	ME-SA	Ind-2001	e
viba_48868	NEP/10/2020	bovine	100.0	0	O	ME-SA	Ind-2001	e
viba_48920	NEP/15/2021	bovine	99.8	0	O	ME-SA	Ind-2001	e
viba_48924	NEP/19/2021	water buffalo	99.8	0	O	ME-SA	Ind-2001	e
viba_48968	NEP/31/2021	bovine	99.8	0	O	ME-SA	Ind-2001	e
viba_48956	NEP/28/2021	bovine	99.8	0	O	ME-SA	Ind-2001	e

Most Closely Related Prototype Sequences

see <http://www.wrlfmd.org/fmdv-genome/fmd-prototype-strains>

sequence	virus name	Host	% Id.	# Ambig.	serotype	topotype	lineage	sublineage
viba_30238	MUR/19/2016	cattle	96.4	0	O	ME-SA	Ind-2001	e
viba_293	BHU/3/2009	cattle	93.4	0	O	ME-SA	Ind-2001	d
viba_541	OMN/7/2001	bovine	92.1	0	O	ME-SA	Ind-2001	b
viba_705	KUW/3/97	bovine	91.5	0	O	ME-SA	Ind-2001	a
viba_397	UAE/4/2008	gazelle	90.5	0	O	ME-SA	Ind-2001	c
viba_285	UKG/35/2001	porcine	89.6	0	O	ME-SA	PanAsia	
viba_766	IRN/31/2009	cattle	89.3	0	O	ME-SA	PanAsia-2	FAR-09
viba_650	IRN/8/2005	ovine	89.1	0	O	ME-SA	PanAsia-2	
viba_666	IRN/18/2010	cattle	88.8	0	O	ME-SA	PanAsia-2	BAL-09
viba_719	IRN/88/2009		88.6	0	O	ME-SA	PanAsia-2	ANT-10

Virus sample name:	NEP/13/2020
Sender reference:	24 Np FMD
Location of origin:	Kaski
Country of origin:	Nepal
Date of collection:	20/12/2020
Host species:	bovine
Serotype:	O
Topotype:	ME-SA
Lineage:	Ind-2001
Sublineage:	e
Sequence length:	633
Ambiguities:	0
Material submitted for sequencing:	WRL-LFBK1
Harvest date of material:	07/10/2021
Primers:	O-1C244F/EUR-2B52R, FMD-3161F/FMD-4303R
Received for sequencing:	02/11/2021
Created:	12/11/2021
Last updated:	12/11/2021
VIBASys IDs: sample 48878, genome 48879, sequence viba_48880, sequencing info 48881	

Most Closely Related Sequences

sequence	virus name	Host	% Id.	# Ambig.	serotype	topotype	lineage	sublineage
viba_48972	NEP/32/2021	bovine	100.0	0	O	ME-SA	Ind-2001	e
viba_48884	NEP/14/2020	water buffalo	100.0	0	O	ME-SA	Ind-2001	e
viba_48872	NEP/11/2020	bovine	100.0	0	O	ME-SA	Ind-2001	e
viba_48876	NEP/12/2020	bovine	100.0	0	O	ME-SA	Ind-2001	e
viba_48936	NEP/23/2021	bovine	100.0	0	O	ME-SA	Ind-2001	e
viba_48868	NEP/10/2020	bovine	100.0	0	O	ME-SA	Ind-2001	e
viba_48920	NEP/15/2021	bovine	99.8	0	O	ME-SA	Ind-2001	e
viba_48924	NEP/19/2021	water buffalo	99.8	0	O	ME-SA	Ind-2001	e
viba_48968	NEP/31/2021	bovine	99.8	0	O	ME-SA	Ind-2001	e
viba_48956	NEP/28/2021	bovine	99.8	0	O	ME-SA	Ind-2001	e

Most Closely Related Prototype Sequences

see <http://www.wrlfmd.org/fmdv-genome/fmd-prototype-strains>

sequence	virus name	Host	% Id.	# Ambig.	serotype	topotype	lineage	sublineage
viba_30238	MUR/19/2016	cattle	96.4	0	O	ME-SA	Ind-2001	e
viba_293	BHU/3/2009	cattle	93.4	0	O	ME-SA	Ind-2001	d
viba_541	OMN/7/2001	bovine	92.1	0	O	ME-SA	Ind-2001	b
viba_705	KUW/3/97	bovine	91.5	0	O	ME-SA	Ind-2001	a
viba_397	UAE/4/2008	gazelle	90.5	0	O	ME-SA	Ind-2001	c
viba_285	UKG/35/2001	porcine	89.6	0	O	ME-SA	PanAsia	
viba_766	IRN/31/2009	cattle	89.3	0	O	ME-SA	PanAsia-2	FAR-09
viba_650	IRN/8/2005	ovine	89.1	0	O	ME-SA	PanAsia-2	
viba_666	IRN/18/2010	cattle	88.8	0	O	ME-SA	PanAsia-2	BAL-09
viba_719	IRN/88/2009		88.6	0	O	ME-SA	PanAsia-2	ANT-10

Virus sample name:	NEP/14/2020
Sender reference:	25 Np FMD
Location of origin:	Kaski
Country of origin:	Nepal
Date of collection:	21/12/2020
Host species:	water buffalo
Serotype:	O
Topotype:	ME-SA
Lineage:	Ind-2001
Sublineage:	e
Sequence length:	633
Ambiguities:	0
Material submitted for sequencing:	WRL-LFBK1
Harvest date of material:	07/10/2021
Primers:	O-1C244F/EUR-2B52R, FMD-3161F/FMD-4303R
Received for sequencing:	02/11/2021
Created:	12/11/2021
Last updated:	12/11/2021
VIBASys IDs: sample 48882, genome 48883, sequence viba_48884, sequencing info 48885	

Most Closely Related Sequences

sequence	virus name	Host	% Id.	# Ambig.	serotype	topotype	lineage	sublineage
viba_48972	NEP/32/2021	bovine	100.0	0	O	ME-SA	Ind-2001	e
viba_48872	NEP/11/2020	bovine	100.0	0	O	ME-SA	Ind-2001	e
viba_48876	NEP/12/2020	bovine	100.0	0	O	ME-SA	Ind-2001	e
viba_48936	NEP/23/2021	bovine	100.0	0	O	ME-SA	Ind-2001	e
viba_48880	NEP/13/2020	bovine	100.0	0	O	ME-SA	Ind-2001	e
viba_48868	NEP/10/2020	bovine	100.0	0	O	ME-SA	Ind-2001	e
viba_48920	NEP/15/2021	bovine	99.8	0	O	ME-SA	Ind-2001	e
viba_48924	NEP/19/2021	water buffalo	99.8	0	O	ME-SA	Ind-2001	e
viba_48968	NEP/31/2021	bovine	99.8	0	O	ME-SA	Ind-2001	e
viba_48956	NEP/28/2021	bovine	99.8	0	O	ME-SA	Ind-2001	e

Most Closely Related Prototype Sequences

see <http://www.wrlfmd.org/fmdv-genome/fmd-prototype-strains>

sequence	virus name	Host	% Id.	# Ambig.	serotype	topotype	lineage	sublineage
viba_30238	MUR/19/2016	cattle	96.4	0	O	ME-SA	Ind-2001	e
viba_293	BHU/3/2009	cattle	93.4	0	O	ME-SA	Ind-2001	d
viba_541	OMN/7/2001	bovine	92.1	0	O	ME-SA	Ind-2001	b
viba_705	KUW/3/97	bovine	91.5	0	O	ME-SA	Ind-2001	a
viba_397	UAE/4/2008	gazelle	90.5	0	O	ME-SA	Ind-2001	c
viba_285	UKG/35/2001	porcine	89.6	0	O	ME-SA	PanAsia	
viba_766	IRN/31/2009	cattle	89.3	0	O	ME-SA	PanAsia-2	FAR-09
viba_650	IRN/8/2005	ovine	89.1	0	O	ME-SA	PanAsia-2	
viba_666	IRN/18/2010	cattle	88.8	0	O	ME-SA	PanAsia-2	BAL-09
viba_719	IRN/88/2009		88.6	0	O	ME-SA	PanAsia-2	ANT-10

Virus sample name:	NEP/4/2021
Sender reference:	11 Np FMD
Location of origin:	Kavre
Country of origin:	Nepal
Date of collection:	01/01/2021
Host species:	bovine
Serotype:	O
Topotype:	ME-SA
Lineage:	Ind-2001
Sublineage:	e
Sequence length:	633
Ambiguities:	0
Material submitted for sequencing:	orig. fluid
Harvest date of material:	n/a
Primers:	O-1C244F/EUR-2B52R, FMD-3161F/FMD-4303R
Received for sequencing:	03/11/2021
Created:	12/11/2021
Last updated:	12/11/2021
VIBASys IDs: sample 48886, genome 48887, sequence viba_48888, sequencing info 48889	

Most Closely Related Sequences

sequence	virus name	Host	% Id.	# Ambig.	serotype	topotype	lineage	sublineage
viba_48972	NEP/32/2021	bovine	99.8	0	O	ME-SA	Ind-2001	e
viba_48884	NEP/14/2020	water buffalo	99.8	0	O	ME-SA	Ind-2001	e
viba_48872	NEP/11/2020	bovine	99.8	0	O	ME-SA	Ind-2001	e
viba_48876	NEP/12/2020	bovine	99.8	0	O	ME-SA	Ind-2001	e
viba_48936	NEP/23/2021	bovine	99.8	0	O	ME-SA	Ind-2001	e
viba_48880	NEP/13/2020	bovine	99.8	0	O	ME-SA	Ind-2001	e
viba_48868	NEP/10/2020	bovine	99.8	0	O	ME-SA	Ind-2001	e
viba_48920	NEP/15/2021	bovine	99.7	0	O	ME-SA	Ind-2001	e
viba_48924	NEP/19/2021	water buffalo	99.7	0	O	ME-SA	Ind-2001	e
viba_48968	NEP/31/2021	bovine	99.7	0	O	ME-SA	Ind-2001	e

Most Closely Related Prototype Sequences

see <http://www.wrlfmd.org/fmdv-genome/fmd-prototype-strains>

sequence	virus name	Host	% Id.	# Ambig.	serotype	topotype	lineage	sublineage
viba_30238	MUR/19/2016	cattle	96.5	0	O	ME-SA	Ind-2001	e
viba_293	BHU/3/2009	cattle	93.2	0	O	ME-SA	Ind-2001	d
viba_541	OMN/7/2001	bovine	92.3	0	O	ME-SA	Ind-2001	b
viba_705	KUW/3/97	bovine	91.6	0	O	ME-SA	Ind-2001	a
viba_397	UAE/4/2008	gazelle	90.5	0	O	ME-SA	Ind-2001	c
viba_285	UKG/35/2001	porcine	89.8	0	O	ME-SA	PanAsia	
viba_766	IRN/31/2009	cattle	89.4	0	O	ME-SA	PanAsia-2	FAR-09
viba_650	IRN/8/2005	ovine	89.3	0	O	ME-SA	PanAsia-2	
viba_666	IRN/18/2010	cattle	88.9	0	O	ME-SA	PanAsia-2	BAL-09
viba_719	IRN/88/2009		88.8	0	O	ME-SA	PanAsia-2	ANT-10

Virus sample name:	NEP/6/2021
Sender reference:	15 Np FMD
Location of origin:	Bhaktapur
Country of origin:	Nepal
Date of collection:	05/01/2021
Host species:	bovine
Serotype:	O
Topotype:	ME-SA
Lineage:	Ind-2001
Sublineage:	e
Sequence length:	633
Ambiguities:	0
Material submitted for sequencing:	WRL-LFBK1
Harvest date of material:	07/10/2021
Primers:	O-1C244F/EUR-2B52R, FMD-3161F/FMD-4303R
Received for sequencing:	02/11/2021
Created:	12/11/2021
Last updated:	12/11/2021
VIBASys IDs: sample 48890, genome 48891, sequence viba_48892, sequencing info 48893	

Most Closely Related Sequences

sequence	virus name	Host	% Id.	# Ambig.	serotype	topotype	lineage	sublineage
viba_48912	NEP/11/2021	bovine	100.0	0	O	ME-SA	Ind-2001	e
viba_48900	NEP/8/2021	bovine	100.0	0	O	ME-SA	Ind-2001	e
viba_48904	NEP/9/2021	bovine	100.0	0	O	ME-SA	Ind-2001	e
viba_48896	NEP/7/2021	bovine	100.0	0	O	ME-SA	Ind-2001	e
viba_48908	NEP/10/2021	bovine	100.0	0	O	ME-SA	Ind-2001	e
viba_48920	NEP/15/2021	bovine	99.7	0	O	ME-SA	Ind-2001	e
viba_48924	NEP/19/2021	water buffalo	99.7	0	O	ME-SA	Ind-2001	e
viba_48928	NEP/20/2021	bovine	99.7	0	O	ME-SA	Ind-2001	e
viba_48972	NEP/32/2021	bovine	99.5	0	O	ME-SA	Ind-2001	e
viba_48948	NEP/26/2021	bovine	99.5	0	O	ME-SA	Ind-2001	e

Most Closely Related Prototype Sequences

see <http://www.wrlfmd.org/fmdv-genome/fmd-prototype-strains>

sequence	virus name	Host	% Id.	# Ambig.	serotype	topotype	lineage	sublineage
viba_30238	MUR/19/2016	cattle	96.2	0	O	ME-SA	Ind-2001	e
viba_293	BHU/3/2009	cattle	93.2	0	O	ME-SA	Ind-2001	d
viba_541	OMN/7/2001	bovine	92.0	0	O	ME-SA	Ind-2001	b
viba_705	KUW/3/97	bovine	91.3	0	O	ME-SA	Ind-2001	a
viba_397	UAE/4/2008	gazelle	90.5	0	O	ME-SA	Ind-2001	c
viba_285	UKG/35/2001	porcine	89.8	0	O	ME-SA	PanAsia	
viba_766	IRN/31/2009	cattle	89.1	0	O	ME-SA	PanAsia-2	FAR-09
viba_650	IRN/8/2005	ovine	89.0	0	O	ME-SA	PanAsia-2	
viba_666	IRN/18/2010	cattle	88.6	0	O	ME-SA	PanAsia-2	BAL-09
viba_719	IRN/88/2009		88.6	0	O	ME-SA	PanAsia-2	ANT-10

Virus sample name:	NEP/7/2021
Sender reference:	16 Np FMD
Location of origin:	Bhaktapur
Country of origin:	Nepal
Date of collection:	05/01/2021
Host species:	bovine
Serotype:	O
Topotype:	ME-SA
Lineage:	Ind-2001
Sublineage:	e
Sequence length:	633
Ambiguities:	0
Material submitted for sequencing:	WRL-LFBK1
Harvest date of material:	08/10/2021
Primers:	O-1C244F/EUR-2B52R, FMD-3161F/FMD-4303R
Received for sequencing:	02/11/2021
Created:	12/11/2021
Last updated:	12/11/2021
VIBASys IDs: sample 48894, genome 48895, sequence viba_48896, sequencing info 48897	

Most Closely Related Sequences

sequence	virus name	Host	% Id.	# Ambig.	serotype	topotype	lineage	sublineage
viba_48912	NEP/11/2021	bovine	100.0	0	O	ME-SA	Ind-2001	e
viba_48900	NEP/8/2021	bovine	100.0	0	O	ME-SA	Ind-2001	e
viba_48904	NEP/9/2021	bovine	100.0	0	O	ME-SA	Ind-2001	e
viba_48908	NEP/10/2021	bovine	100.0	0	O	ME-SA	Ind-2001	e
viba_48892	NEP/6/2021	bovine	100.0	0	O	ME-SA	Ind-2001	e
viba_48920	NEP/15/2021	bovine	99.7	0	O	ME-SA	Ind-2001	e
viba_48924	NEP/19/2021	water buffalo	99.7	0	O	ME-SA	Ind-2001	e
viba_48928	NEP/20/2021	bovine	99.7	0	O	ME-SA	Ind-2001	e
viba_48972	NEP/32/2021	bovine	99.5	0	O	ME-SA	Ind-2001	e
viba_48948	NEP/26/2021	bovine	99.5	0	O	ME-SA	Ind-2001	e

Most Closely Related Prototype Sequences

see <http://www.wrlfmd.org/fmdv-genome/fmd-prototype-strains>

sequence	virus name	Host	% Id.	# Ambig.	serotype	topotype	lineage	sublineage
viba_30238	MUR/19/2016	cattle	96.2	0	O	ME-SA	Ind-2001	e
viba_293	BHU/3/2009	cattle	93.2	0	O	ME-SA	Ind-2001	d
viba_541	OMN/7/2001	bovine	92.0	0	O	ME-SA	Ind-2001	b
viba_705	KUW/3/97	bovine	91.3	0	O	ME-SA	Ind-2001	a
viba_397	UAE/4/2008	gazelle	90.5	0	O	ME-SA	Ind-2001	c
viba_285	UKG/35/2001	porcine	89.8	0	O	ME-SA	PanAsia	
viba_766	IRN/31/2009	cattle	89.1	0	O	ME-SA	PanAsia-2	FAR-09
viba_650	IRN/8/2005	ovine	89.0	0	O	ME-SA	PanAsia-2	
viba_666	IRN/18/2010	cattle	88.6	0	O	ME-SA	PanAsia-2	BAL-09
viba_719	IRN/88/2009		88.6	0	O	ME-SA	PanAsia-2	ANT-10

Virus sample name:	NEP/8/2021
Sender reference:	17 Np FMD
Location of origin:	Bhaktapur
Country of origin:	Nepal
Date of collection:	05/01/2021
Host species:	bovine
Serotype:	O
Topotype:	ME-SA
Lineage:	Ind-2001
Sublineage:	e
Sequence length:	633
Ambiguities:	0
Material submitted for sequencing:	orig. fluid
Harvest date of material:	n/a
Primers:	O-1C244F/EUR-2B52R, FMD-3161F/FMD-4303R
Received for sequencing:	03/11/2021
Created:	12/11/2021
Last updated:	12/11/2021
VIBASys IDs: sample 48898, genome 48899, sequence viba_48900, sequencing info 48901	

Most Closely Related Sequences

sequence	virus name	Host	% Id.	# Ambig.	serotype	topotype	lineage	sublineage
viba_48912	NEP/11/2021	bovine	100.0	0	O	ME-SA	Ind-2001	e
viba_48904	NEP/9/2021	bovine	100.0	0	O	ME-SA	Ind-2001	e
viba_48896	NEP/7/2021	bovine	100.0	0	O	ME-SA	Ind-2001	e
viba_48908	NEP/10/2021	bovine	100.0	0	O	ME-SA	Ind-2001	e
viba_48892	NEP/6/2021	bovine	100.0	0	O	ME-SA	Ind-2001	e
viba_48920	NEP/15/2021	bovine	99.7	0	O	ME-SA	Ind-2001	e
viba_48924	NEP/19/2021	water buffalo	99.7	0	O	ME-SA	Ind-2001	e
viba_48928	NEP/20/2021	bovine	99.7	0	O	ME-SA	Ind-2001	e
viba_48972	NEP/32/2021	bovine	99.5	0	O	ME-SA	Ind-2001	e
viba_48948	NEP/26/2021	bovine	99.5	0	O	ME-SA	Ind-2001	e

Most Closely Related Prototype Sequences

see <http://www.wrlfmd.org/fmdv-genome/fmd-prototype-strains>

sequence	virus name	Host	% Id.	# Ambig.	serotype	topotype	lineage	sublineage
viba_30238	MUR/19/2016	cattle	96.2	0	O	ME-SA	Ind-2001	e
viba_293	BHU/3/2009	cattle	93.2	0	O	ME-SA	Ind-2001	d
viba_541	OMN/7/2001	bovine	92.0	0	O	ME-SA	Ind-2001	b
viba_705	KUW/3/97	bovine	91.3	0	O	ME-SA	Ind-2001	a
viba_397	UAE/4/2008	gazelle	90.5	0	O	ME-SA	Ind-2001	c
viba_285	UKG/35/2001	porcine	89.8	0	O	ME-SA	PanAsia	
viba_766	IRN/31/2009	cattle	89.1	0	O	ME-SA	PanAsia-2	FAR-09
viba_650	IRN/8/2005	ovine	89.0	0	O	ME-SA	PanAsia-2	
viba_666	IRN/18/2010	cattle	88.6	0	O	ME-SA	PanAsia-2	BAL-09
viba_719	IRN/88/2009		88.6	0	O	ME-SA	PanAsia-2	ANT-10

Virus sample name:	NEP/9/2021
Sender reference:	18 Np FMD
Location of origin:	Bhaktapur
Country of origin:	Nepal
Date of collection:	05/01/2021
Host species:	bovine
Serotype:	O
Topotype:	ME-SA
Lineage:	Ind-2001
Sublineage:	e
Sequence length:	633
Ambiguities:	0
Material submitted for sequencing:	WRL-LFBK1
Harvest date of material:	07/10/2021
Primers:	O-1C244F/EUR-2B52R, FMD-3161F/FMD-4303R
Received for sequencing:	02/11/2021
Created:	12/11/2021
Last updated:	12/11/2021
VIBASys IDs: sample 48902, genome 48903, sequence viba_48904, sequencing info 48905	

Most Closely Related Sequences

sequence	virus name	Host	% Id.	# Ambig.	serotype	topotype	lineage	sublineage
viba_48912	NEP/11/2021	bovine	100.0	0	O	ME-SA	Ind-2001	e
viba_48900	NEP/8/2021	bovine	100.0	0	O	ME-SA	Ind-2001	e
viba_48896	NEP/7/2021	bovine	100.0	0	O	ME-SA	Ind-2001	e
viba_48908	NEP/10/2021	bovine	100.0	0	O	ME-SA	Ind-2001	e
viba_48892	NEP/6/2021	bovine	100.0	0	O	ME-SA	Ind-2001	e
viba_48920	NEP/15/2021	bovine	99.7	0	O	ME-SA	Ind-2001	e
viba_48924	NEP/19/2021	water buffalo	99.7	0	O	ME-SA	Ind-2001	e
viba_48928	NEP/20/2021	bovine	99.7	0	O	ME-SA	Ind-2001	e
viba_48972	NEP/32/2021	bovine	99.5	0	O	ME-SA	Ind-2001	e
viba_48948	NEP/26/2021	bovine	99.5	0	O	ME-SA	Ind-2001	e

Most Closely Related Prototype Sequences

see <http://www.wrlfmd.org/fmdv-genome/fmd-prototype-strains>

sequence	virus name	Host	% Id.	# Ambig.	serotype	topotype	lineage	sublineage
viba_30238	MUR/19/2016	cattle	96.2	0	O	ME-SA	Ind-2001	e
viba_293	BHU/3/2009	cattle	93.2	0	O	ME-SA	Ind-2001	d
viba_541	OMN/7/2001	bovine	92.0	0	O	ME-SA	Ind-2001	b
viba_705	KUW/3/97	bovine	91.3	0	O	ME-SA	Ind-2001	a
viba_397	UAE/4/2008	gazelle	90.5	0	O	ME-SA	Ind-2001	c
viba_285	UKG/35/2001	porcine	89.8	0	O	ME-SA	PanAsia	
viba_766	IRN/31/2009	cattle	89.1	0	O	ME-SA	PanAsia-2	FAR-09
viba_650	IRN/8/2005	ovine	89.0	0	O	ME-SA	PanAsia-2	
viba_666	IRN/18/2010	cattle	88.6	0	O	ME-SA	PanAsia-2	BAL-09
viba_719	IRN/88/2009		88.6	0	O	ME-SA	PanAsia-2	ANT-10

Virus sample name:	NEP/10/2021
Sender reference:	19 Np FMD
Location of origin:	Bhaktapur
Country of origin:	Nepal
Date of collection:	05/01/2021
Host species:	bovine
Serotype:	O
Topotype:	ME-SA
Lineage:	Ind-2001
Sublineage:	e
Sequence length:	633
Ambiguities:	0
Material submitted for sequencing:	WRL-LFBK1
Harvest date of material:	08/10/2021
Primers:	O-1C244F/EUR-2B52R, FMD-3161F/FMD-4303R
Received for sequencing:	02/11/2021
Created:	12/11/2021
Last updated:	12/11/2021
VIBASys IDs: sample 48906, genome 48907, sequence viba_48908, sequencing info 48909	

Most Closely Related Sequences

sequence	virus name	Host	% Id.	# Ambig.	serotype	topotype	lineage	sublineage
viba_48912	NEP/11/2021	bovine	100.0	0	O	ME-SA	Ind-2001	e
viba_48900	NEP/8/2021	bovine	100.0	0	O	ME-SA	Ind-2001	e
viba_48904	NEP/9/2021	bovine	100.0	0	O	ME-SA	Ind-2001	e
viba_48896	NEP/7/2021	bovine	100.0	0	O	ME-SA	Ind-2001	e
viba_48892	NEP/6/2021	bovine	100.0	0	O	ME-SA	Ind-2001	e
viba_48920	NEP/15/2021	bovine	99.7	0	O	ME-SA	Ind-2001	e
viba_48924	NEP/19/2021	water buffalo	99.7	0	O	ME-SA	Ind-2001	e
viba_48928	NEP/20/2021	bovine	99.7	0	O	ME-SA	Ind-2001	e
viba_48972	NEP/32/2021	bovine	99.5	0	O	ME-SA	Ind-2001	e
viba_48948	NEP/26/2021	bovine	99.5	0	O	ME-SA	Ind-2001	e

Most Closely Related Prototype Sequences

see <http://www.wrlfmd.org/fmdv-genome/fmd-prototype-strains>

sequence	virus name	Host	% Id.	# Ambig.	serotype	topotype	lineage	sublineage
viba_30238	MUR/19/2016	cattle	96.2	0	O	ME-SA	Ind-2001	e
viba_293	BHU/3/2009	cattle	93.2	0	O	ME-SA	Ind-2001	d
viba_541	OMN/7/2001	bovine	92.0	0	O	ME-SA	Ind-2001	b
viba_705	KUW/3/97	bovine	91.3	0	O	ME-SA	Ind-2001	a
viba_397	UAE/4/2008	gazelle	90.5	0	O	ME-SA	Ind-2001	c
viba_285	UKG/35/2001	porcine	89.8	0	O	ME-SA	PanAsia	
viba_766	IRN/31/2009	cattle	89.1	0	O	ME-SA	PanAsia-2	FAR-09
viba_650	IRN/8/2005	ovine	89.0	0	O	ME-SA	PanAsia-2	
viba_666	IRN/18/2010	cattle	88.6	0	O	ME-SA	PanAsia-2	BAL-09
viba_719	IRN/88/2009		88.6	0	O	ME-SA	PanAsia-2	ANT-10

Virus sample name:	NEP/11/2021
Sender reference:	20 Np FMD
Location of origin:	Bhaktapur
Country of origin:	Nepal
Date of collection:	05/01/2021
Host species:	bovine
Serotype:	O
Topotype:	ME-SA
Lineage:	Ind-2001
Sublineage:	e
Sequence length:	633
Ambiguities:	0
Material submitted for sequencing:	WRL-LFBK1
Harvest date of material:	08/10/2021
Primers:	O-1C244F/EUR-2B52R, FMD-3161F/FMD-4303R
Received for sequencing:	02/11/2021
Created:	12/11/2021
Last updated:	12/11/2021
VIBASys IDs: sample 48910, genome 48911, sequence viba_48912, sequencing info 48913	

Most Closely Related Sequences

sequence	virus name	Host	% Id.	# Ambig.	serotype	topotype	lineage	sublineage
viba_48900	NEP/8/2021	bovine	100.0	0	O	ME-SA	Ind-2001	e
viba_48904	NEP/9/2021	bovine	100.0	0	O	ME-SA	Ind-2001	e
viba_48896	NEP/7/2021	bovine	100.0	0	O	ME-SA	Ind-2001	e
viba_48908	NEP/10/2021	bovine	100.0	0	O	ME-SA	Ind-2001	e
viba_48892	NEP/6/2021	bovine	100.0	0	O	ME-SA	Ind-2001	e
viba_48920	NEP/15/2021	bovine	99.7	0	O	ME-SA	Ind-2001	e
viba_48924	NEP/19/2021	water buffalo	99.7	0	O	ME-SA	Ind-2001	e
viba_48928	NEP/20/2021	bovine	99.7	0	O	ME-SA	Ind-2001	e
viba_48972	NEP/32/2021	bovine	99.5	0	O	ME-SA	Ind-2001	e
viba_48948	NEP/26/2021	bovine	99.5	0	O	ME-SA	Ind-2001	e

Most Closely Related Prototype Sequences

see <http://www.wrlfmd.org/fmdv-genome/fmd-prototype-strains>

sequence	virus name	Host	% Id.	# Ambig.	serotype	topotype	lineage	sublineage
viba_30238	MUR/19/2016	cattle	96.2	0	O	ME-SA	Ind-2001	e
viba_293	BHU/3/2009	cattle	93.2	0	O	ME-SA	Ind-2001	d
viba_541	OMN/7/2001	bovine	92.0	0	O	ME-SA	Ind-2001	b
viba_705	KUW/3/97	bovine	91.3	0	O	ME-SA	Ind-2001	a
viba_397	UAE/4/2008	gazelle	90.5	0	O	ME-SA	Ind-2001	c
viba_285	UKG/35/2001	porcine	89.8	0	O	ME-SA	PanAsia	
viba_766	IRN/31/2009	cattle	89.1	0	O	ME-SA	PanAsia-2	FAR-09
viba_650	IRN/8/2005	ovine	89.0	0	O	ME-SA	PanAsia-2	
viba_666	IRN/18/2010	cattle	88.6	0	O	ME-SA	PanAsia-2	BAL-09
viba_719	IRN/88/2009		88.6	0	O	ME-SA	PanAsia-2	ANT-10

Virus sample name:	NEP/14/2021
Sender reference:	54 Np FMD
Location of origin:	Kaski
Country of origin:	Nepal
Date of collection:	21/01/2021
Host species:	bovine
Serotype:	O
Topotype:	ME-SA
Lineage:	Ind-2001
Sublineage:	e
Sequence length:	633
Ambiguities:	0
Material submitted for sequencing:	orig. fluid
Harvest date of material:	n/a
Primers:	O-1C244F/EUR-2B52R, FMD-3161F/FMD-4303R
Received for sequencing:	03/11/2021
Created:	12/11/2021
Last updated:	12/11/2021
VIBASys IDs: sample 48914, genome 48915, sequence viba_48916, sequencing info 48917	

Most Closely Related Sequences

sequence	virus name	Host	% Id.	# Ambig.	serotype	topotype	lineage	sublineage
viba_48920	NEP/15/2021	bovine	99.8	0	O	ME-SA	Ind-2001	e
viba_48924	NEP/19/2021	water buffalo	99.8	0	O	ME-SA	Ind-2001	e
viba_48928	NEP/20/2021	bovine	99.8	0	O	ME-SA	Ind-2001	e
viba_48972	NEP/32/2021	bovine	99.7	0	O	ME-SA	Ind-2001	e
viba_48948	NEP/26/2021	bovine	99.7	0	O	ME-SA	Ind-2001	e
viba_48884	NEP/14/2020	water buffalo	99.7	0	O	ME-SA	Ind-2001	e
viba_48872	NEP/11/2020	bovine	99.7	0	O	ME-SA	Ind-2001	e
viba_48876	NEP/12/2020	bovine	99.7	0	O	ME-SA	Ind-2001	e
viba_48936	NEP/23/2021	bovine	99.7	0	O	ME-SA	Ind-2001	e
viba_48880	NEP/13/2020	bovine	99.7	0	O	ME-SA	Ind-2001	e

Most Closely Related Prototype Sequences

see <http://www.wrlfmd.org/fmdv-genome/fmd-prototype-strains>

sequence	virus name	Host	% Id.	# Ambig.	serotype	topotype	lineage	sublineage
viba_30238	MUR/19/2016	cattle	96.4	0	O	ME-SA	Ind-2001	e
viba_293	BHU/3/2009	cattle	93.4	0	O	ME-SA	Ind-2001	d
viba_541	OMN/7/2001	bovine	92.1	0	O	ME-SA	Ind-2001	b
viba_705	KUW/3/97	bovine	91.5	0	O	ME-SA	Ind-2001	a
viba_397	UAE/4/2008	gazelle	90.5	0	O	ME-SA	Ind-2001	c
viba_285	UKG/35/2001	porcine	89.6	0	O	ME-SA	PanAsia	
viba_766	IRN/31/2009	cattle	89.3	0	O	ME-SA	PanAsia-2	FAR-09
viba_650	IRN/8/2005	ovine	89.1	0	O	ME-SA	PanAsia-2	
viba_666	IRN/18/2010	cattle	88.8	0	O	ME-SA	PanAsia-2	BAL-09
viba_719	IRN/88/2009		88.6	0	O	ME-SA	PanAsia-2	ANT-10

Virus sample name:	NEP/15/2021
Sender reference:	26 Np FMD
Location of origin:	Kavre
Country of origin:	Nepal
Date of collection:	27/01/2021
Host species:	bovine
Serotype:	O
Topotype:	ME-SA
Lineage:	Ind-2001
Sublineage:	e
Sequence length:	633
Ambiguities:	0
Material submitted for sequencing:	WRL-LFBK1
Harvest date of material:	08/10/2021
Primers:	O-1C244F/EUR-2B52R, FMD-3161F/FMD-4303R
Received for sequencing:	02/11/2021
Created:	12/11/2021
Last updated:	12/11/2021
VIBASys IDs: sample 48918, genome 48919, sequence viba_48920, sequencing info 48921	

Most Closely Related Sequences

sequence	virus name	Host	% Id.	# Ambig.	serotype	topotype	lineage	sublineage
viba_48924	NEP/19/2021	water buffalo	100.0	0	O	ME-SA	Ind-2001	e
viba_48928	NEP/20/2021	bovine	100.0	0	O	ME-SA	Ind-2001	e
viba_48972	NEP/32/2021	bovine	99.8	0	O	ME-SA	Ind-2001	e
viba_48948	NEP/26/2021	bovine	99.8	0	O	ME-SA	Ind-2001	e
viba_48884	NEP/14/2020	water buffalo	99.8	0	O	ME-SA	Ind-2001	e
viba_48872	NEP/11/2020	bovine	99.8	0	O	ME-SA	Ind-2001	e
viba_48876	NEP/12/2020	bovine	99.8	0	O	ME-SA	Ind-2001	e
viba_48916	NEP/14/2021	bovine	99.8	0	O	ME-SA	Ind-2001	e
viba_48936	NEP/23/2021	bovine	99.8	0	O	ME-SA	Ind-2001	e
viba_48880	NEP/13/2020	bovine	99.8	0	O	ME-SA	Ind-2001	e

Most Closely Related Prototype Sequences

see <http://www.wrlfmd.org/fmdv-genome/fmd-prototype-strains>

sequence	virus name	Host	% Id.	# Ambig.	serotype	topotype	lineage	sublineage
viba_30238	MUR/19/2016	cattle	96.5	0	O	ME-SA	Ind-2001	e
viba_293	BHU/3/2009	cattle	93.5	0	O	ME-SA	Ind-2001	d
viba_541	OMN/7/2001	bovine	92.3	0	O	ME-SA	Ind-2001	b
viba_705	KUW/3/97	bovine	91.6	0	O	ME-SA	Ind-2001	a
viba_397	UAE/4/2008	gazelle	90.7	0	O	ME-SA	Ind-2001	c
viba_285	UKG/35/2001	porcine	89.8	0	O	ME-SA	PanAsia	
viba_766	IRN/31/2009	cattle	89.4	0	O	ME-SA	PanAsia-2	FAR-09
viba_650	IRN/8/2005	ovine	89.3	0	O	ME-SA	PanAsia-2	
viba_666	IRN/18/2010	cattle	88.9	0	O	ME-SA	PanAsia-2	BAL-09
viba_719	IRN/88/2009		88.8	0	O	ME-SA	PanAsia-2	ANT-10

Virus sample name:	NEP/19/2021
Sender reference:	27 Np FMD
Location of origin:	Nuwakot
Country of origin:	Nepal
Date of collection:	31/01/2021
Host species:	water buffalo
Serotype:	O
Topotype:	ME-SA
Lineage:	Ind-2001
Sublineage:	e
Sequence length:	633
Ambiguities:	0
Material submitted for sequencing:	WRL-LFBK1
Harvest date of material:	08/10/2021
Primers:	O-1C244F/EUR-2B52R, FMD-3161F/FMD-4303R
Received for sequencing:	02/11/2021
Created:	12/11/2021
Last updated:	12/11/2021
VIBASys IDs: sample 48922, genome 48923, sequence viba_48924, sequencing info 48925	

Most Closely Related Sequences

sequence	virus name	Host	% Id.	# Ambig.	serotype	topotype	lineage	sublineage
viba_48920	NEP/15/2021	bovine	100.0	0	O	ME-SA	Ind-2001	e
viba_48928	NEP/20/2021	bovine	100.0	0	O	ME-SA	Ind-2001	e
viba_48972	NEP/32/2021	bovine	99.8	0	O	ME-SA	Ind-2001	e
viba_48948	NEP/26/2021	bovine	99.8	0	O	ME-SA	Ind-2001	e
viba_48884	NEP/14/2020	water buffalo	99.8	0	O	ME-SA	Ind-2001	e
viba_48872	NEP/11/2020	bovine	99.8	0	O	ME-SA	Ind-2001	e
viba_48876	NEP/12/2020	bovine	99.8	0	O	ME-SA	Ind-2001	e
viba_48916	NEP/14/2021	bovine	99.8	0	O	ME-SA	Ind-2001	e
viba_48936	NEP/23/2021	bovine	99.8	0	O	ME-SA	Ind-2001	e
viba_48880	NEP/13/2020	bovine	99.8	0	O	ME-SA	Ind-2001	e

Most Closely Related Prototype Sequences

see <http://www.wrlfmd.org/fmdv-genome/fmd-prototype-strains>

sequence	virus name	Host	% Id.	# Ambig.	serotype	topotype	lineage	sublineage
viba_30238	MUR/19/2016	cattle	96.5	0	O	ME-SA	Ind-2001	e
viba_293	BHU/3/2009	cattle	93.5	0	O	ME-SA	Ind-2001	d
viba_541	OMN/7/2001	bovine	92.3	0	O	ME-SA	Ind-2001	b
viba_705	KUW/3/97	bovine	91.6	0	O	ME-SA	Ind-2001	a
viba_397	UAE/4/2008	gazelle	90.7	0	O	ME-SA	Ind-2001	c
viba_285	UKG/35/2001	porcine	89.8	0	O	ME-SA	PanAsia	
viba_766	IRN/31/2009	cattle	89.4	0	O	ME-SA	PanAsia-2	FAR-09
viba_650	IRN/8/2005	ovine	89.3	0	O	ME-SA	PanAsia-2	
viba_666	IRN/18/2010	cattle	88.9	0	O	ME-SA	PanAsia-2	BAL-09
viba_719	IRN/88/2009		88.8	0	O	ME-SA	PanAsia-2	ANT-10

Virus sample name:	NEP/20/2021
Sender reference:	28 Np FMD
Location of origin:	Nuwakot
Country of origin:	Nepal
Date of collection:	31/01/2021
Host species:	bovine
Serotype:	O
Topotype:	ME-SA
Lineage:	Ind-2001
Sublineage:	e
Sequence length:	633
Ambiguities:	0
Material submitted for sequencing:	WRL-LFBK1
Harvest date of material:	13/10/2021
Primers:	O-1C244F/EUR-2B52R, FMD-3161F/FMD-4303R
Received for sequencing:	02/11/2021
Created:	12/11/2021
Last updated:	12/11/2021
VIBASys IDs: sample 48926, genome 48927, sequence viba_48928, sequencing info 48929	

Most Closely Related Sequences

sequence	virus name	Host	% Id.	# Ambig.	serotype	topotype	lineage	sublineage
viba_48920	NEP/15/2021	bovine	100.0	0	O	ME-SA	Ind-2001	e
viba_48924	NEP/19/2021	water buffalo	100.0	0	O	ME-SA	Ind-2001	e
viba_48972	NEP/32/2021	bovine	99.8	0	O	ME-SA	Ind-2001	e
viba_48948	NEP/26/2021	bovine	99.8	0	O	ME-SA	Ind-2001	e
viba_48884	NEP/14/2020	water buffalo	99.8	0	O	ME-SA	Ind-2001	e
viba_48872	NEP/11/2020	bovine	99.8	0	O	ME-SA	Ind-2001	e
viba_48876	NEP/12/2020	bovine	99.8	0	O	ME-SA	Ind-2001	e
viba_48916	NEP/14/2021	bovine	99.8	0	O	ME-SA	Ind-2001	e
viba_48936	NEP/23/2021	bovine	99.8	0	O	ME-SA	Ind-2001	e
viba_48880	NEP/13/2020	bovine	99.8	0	O	ME-SA	Ind-2001	e

Most Closely Related Prototype Sequences

see <http://www.wrlfmd.org/fmdv-genome/fmd-prototype-strains>

sequence	virus name	Host	% Id.	# Ambig.	serotype	topotype	lineage	sublineage
viba_30238	MUR/19/2016	cattle	96.5	0	O	ME-SA	Ind-2001	e
viba_293	BHU/3/2009	cattle	93.5	0	O	ME-SA	Ind-2001	d
viba_541	OMN/7/2001	bovine	92.3	0	O	ME-SA	Ind-2001	b
viba_705	KUW/3/97	bovine	91.6	0	O	ME-SA	Ind-2001	a
viba_397	UAE/4/2008	gazelle	90.7	0	O	ME-SA	Ind-2001	c
viba_285	UKG/35/2001	porcine	89.8	0	O	ME-SA	PanAsia	
viba_766	IRN/31/2009	cattle	89.4	0	O	ME-SA	PanAsia-2	FAR-09
viba_650	IRN/8/2005	ovine	89.3	0	O	ME-SA	PanAsia-2	
viba_666	IRN/18/2010	cattle	88.9	0	O	ME-SA	PanAsia-2	BAL-09
viba_719	IRN/88/2009		88.8	0	O	ME-SA	PanAsia-2	ANT-10

Virus sample name:	NEP/22/2021
Sender reference:	37 Np FMD
Location of origin:	Rupendehi
Country of origin:	Nepal
Date of collection:	16/02/2021
Host species:	bovine
Serotype:	O
Topotype:	ME-SA
Lineage:	Ind-2001
Sublineage:	e
Sequence length:	633
Ambiguities:	0
Material submitted for sequencing:	WRL-LFBK1
Harvest date of material:	13/10/2021
Primers:	O-1C244F/EUR-2B52R, FMD-3161F/FMD-4303R
Received for sequencing:	02/11/2021
Created:	12/11/2021
Last updated:	12/11/2021

VIBASys IDs: sample 48930, genome 48931, sequence viba_48932, sequencing info 48933

Most Closely Related Sequences

sequence	virus name	Host	% Id.	# Ambig.	serotype	topotype	lineage	sublineage
viba_48948	NEP/26/2021	bovine	100.0	0	O	ME-SA	Ind-2001	e
viba_48920	NEP/15/2021	bovine	99.8	0	O	ME-SA	Ind-2001	e
viba_48940	NEP/24/2021	bovine	99.8	0	O	ME-SA	Ind-2001	e
viba_48924	NEP/19/2021	water buffalo	99.8	0	O	ME-SA	Ind-2001	e
viba_48952	NEP/27/2021	bovine	99.8	0	O	ME-SA	Ind-2001	e
viba_48928	NEP/20/2021	bovine	99.8	0	O	ME-SA	Ind-2001	e
viba_48972	NEP/32/2021	bovine	99.7	0	O	ME-SA	Ind-2001	e
viba_48884	NEP/14/2020	water buffalo	99.7	0	O	ME-SA	Ind-2001	e
viba_48944	NEP/25/2021	bovine	99.7	0	O	ME-SA	Ind-2001	e
viba_48872	NEP/11/2020	bovine	99.7	0	O	ME-SA	Ind-2001	e

Most Closely Related Prototype Sequences

see <http://www.wrlfmd.org/fmdv-genome/fmd-prototype-strains>

sequence	virus name	Host	% Id.	# Ambig.	serotype	topotype	lineage	sublineage
viba_30238	MUR/19/2016	cattle	96.4	0	O	ME-SA	Ind-2001	e
viba_293	BHU/3/2009	cattle	93.4	0	O	ME-SA	Ind-2001	d
viba_541	OMN/7/2001	bovine	92.1	0	O	ME-SA	Ind-2001	b
viba_705	KUW/3/97	bovine	91.5	0	O	ME-SA	Ind-2001	a
viba_397	UAE/4/2008	gazelle	90.5	0	O	ME-SA	Ind-2001	c
viba_766	IRN/31/2009	cattle	89.6	0	O	ME-SA	PanAsia-2	FAR-09
viba_285	UKG/35/2001	porcine	89.6	0	O	ME-SA	PanAsia	
viba_650	IRN/8/2005	ovine	89.4	0	O	ME-SA	PanAsia-2	
viba_666	IRN/18/2010	cattle	89.1	0	O	ME-SA	PanAsia-2	BAL-09
viba_491	TUR/257/2008		89.0	0	O	ME-SA	PanAsia-2	TER-08

Virus sample name:	NEP/23/2021
Sender reference:	38 Np FMD
Location of origin:	Rupendehi
Country of origin:	Nepal
Date of collection:	16/02/2021
Host species:	bovine
Serotype:	O
Topotype:	ME-SA
Lineage:	Ind-2001
Sublineage:	e
Sequence length:	633
Ambiguities:	0
Material submitted for sequencing:	WRL-LFBK1
Harvest date of material:	13/10/2021
Primers:	O-1C244F/EUR-2B52R, FMD-3161F/FMD-4303R
Received for sequencing:	02/11/2021
Created:	12/11/2021
Last updated:	12/11/2021
VIBASys IDs: sample 48934, genome 48935, sequence viba_48936, sequencing info 48937	

Most Closely Related Sequences

sequence	virus name	Host	% Id.	# Ambig.	serotype	topotype	lineage	sublineage
viba_48972	NEP/32/2021	bovine	100.0	0	O	ME-SA	Ind-2001	e
viba_48884	NEP/14/2020	water buffalo	100.0	0	O	ME-SA	Ind-2001	e
viba_48872	NEP/11/2020	bovine	100.0	0	O	ME-SA	Ind-2001	e
viba_48876	NEP/12/2020	bovine	100.0	0	O	ME-SA	Ind-2001	e
viba_48880	NEP/13/2020	bovine	100.0	0	O	ME-SA	Ind-2001	e
viba_48868	NEP/10/2020	bovine	100.0	0	O	ME-SA	Ind-2001	e
viba_48920	NEP/15/2021	bovine	99.8	0	O	ME-SA	Ind-2001	e
viba_48924	NEP/19/2021	water buffalo	99.8	0	O	ME-SA	Ind-2001	e
viba_48968	NEP/31/2021	bovine	99.8	0	O	ME-SA	Ind-2001	e
viba_48956	NEP/28/2021	bovine	99.8	0	O	ME-SA	Ind-2001	e

Most Closely Related Prototype Sequences

see <http://www.wrlfmd.org/fmdv-genome/fmd-prototype-strains>

sequence	virus name	Host	% Id.	# Ambig.	serotype	topotype	lineage	sublineage
viba_30238	MUR/19/2016	cattle	96.4	0	O	ME-SA	Ind-2001	e
viba_293	BHU/3/2009	cattle	93.4	0	O	ME-SA	Ind-2001	d
viba_541	OMN/7/2001	bovine	92.1	0	O	ME-SA	Ind-2001	b
viba_705	KUW/3/97	bovine	91.5	0	O	ME-SA	Ind-2001	a
viba_397	UAE/4/2008	gazelle	90.5	0	O	ME-SA	Ind-2001	c
viba_285	UKG/35/2001	porcine	89.6	0	O	ME-SA	PanAsia	
viba_766	IRN/31/2009	cattle	89.3	0	O	ME-SA	PanAsia-2	FAR-09
viba_650	IRN/8/2005	ovine	89.1	0	O	ME-SA	PanAsia-2	
viba_666	IRN/18/2010	cattle	88.8	0	O	ME-SA	PanAsia-2	BAL-09
viba_719	IRN/88/2009		88.6	0	O	ME-SA	PanAsia-2	ANT-10

Virus sample name:	NEP/24/2021
Sender reference:	33 Np FMD
Location of origin:	Kathmandu
Country of origin:	Nepal
Date of collection:	17/02/2021
Host species:	bovine
Serotype:	O
Topotype:	ME-SA
Lineage:	Ind-2001
Sublineage:	e
Sequence length:	633
Ambiguities:	0
Material submitted for sequencing:	WRL-LFBK1
Harvest date of material:	13/10/2021
Primers:	O-1C244F/EUR-2B52R, FMD-3161F/FMD-4303R
Received for sequencing:	02/11/2021
Created:	12/11/2021
Last updated:	12/11/2021
VIBASys IDs: sample 48938, genome 48939, sequence viba_48940, sequencing info 48941	

Most Closely Related Sequences

sequence	virus name	Host	% Id.	# Ambig.	serotype	topotype	lineage	sublineage
viba_48952	NEP/27/2021	bovine	100.0	0	O	ME-SA	Ind-2001	e
viba_48948	NEP/26/2021	bovine	99.8	0	O	ME-SA	Ind-2001	e
viba_48944	NEP/25/2021	bovine	99.8	0	O	ME-SA	Ind-2001	e
viba_48932	NEP/22/2021	bovine	99.8	0	O	ME-SA	Ind-2001	e
viba_48920	NEP/15/2021	bovine	99.7	0	O	ME-SA	Ind-2001	e
viba_48924	NEP/19/2021	water buffalo	99.7	0	O	ME-SA	Ind-2001	e
viba_48928	NEP/20/2021	bovine	99.7	0	O	ME-SA	Ind-2001	e
viba_48972	NEP/32/2021	bovine	99.5	0	O	ME-SA	Ind-2001	e
viba_48884	NEP/14/2020	water buffalo	99.5	0	O	ME-SA	Ind-2001	e
viba_48872	NEP/11/2020	bovine	99.5	0	O	ME-SA	Ind-2001	e

Most Closely Related Prototype Sequences

see <http://www.wrlfmd.org/fmdv-genome/fmd-prototype-strains>

sequence	virus name	Host	% Id.	# Ambig.	serotype	topotype	lineage	sublineage
viba_30238	MUR/19/2016	cattle	96.2	0	O	ME-SA	Ind-2001	e
viba_293	BHU/3/2009	cattle	93.2	0	O	ME-SA	Ind-2001	d
viba_541	OMN/7/2001	bovine	92.3	0	O	ME-SA	Ind-2001	b
viba_705	KUW/3/97	bovine	91.3	0	O	ME-SA	Ind-2001	a
viba_397	UAE/4/2008	gazelle	90.4	0	O	ME-SA	Ind-2001	c
viba_766	IRN/31/2009	cattle	89.4	0	O	ME-SA	PanAsia-2	FAR-09
viba_285	UKG/35/2001	porcine	89.4	0	O	ME-SA	PanAsia	
viba_650	IRN/8/2005	ovine	89.3	0	O	ME-SA	PanAsia-2	
viba_666	IRN/18/2010	cattle	88.9	0	O	ME-SA	PanAsia-2	BAL-09
viba_719	IRN/88/2009		88.8	0	O	ME-SA	PanAsia-2	ANT-10

Virus sample name:	NEP/25/2021
Sender reference:	34 Np FMD
Location of origin:	Kathmandu
Country of origin:	Nepal
Date of collection:	17/02/2021
Host species:	bovine
Serotype:	O
Topotype:	ME-SA
Lineage:	Ind-2001
Sublineage:	e
Sequence length:	633
Ambiguities:	0
Material submitted for sequencing:	WRL-LFBK1
Harvest date of material:	13/10/2021
Primers:	O-1C244F/EUR-2B52R, FMD-3161F/FMD-4303R
Received for sequencing:	02/11/2021
Created:	12/11/2021
Last updated:	12/11/2021
VIBASys IDs: sample 48942, genome 48943, sequence viba_48944, sequencing info 48945	

Most Closely Related Sequences

sequence	virus name	Host	% Id.	# Ambig.	serotype	topotype	lineage	sublineage
viba_48940	NEP/24/2021	bovine	99.8	0	O	ME-SA	Ind-2001	e
viba_48952	NEP/27/2021	bovine	99.8	0	O	ME-SA	Ind-2001	e
viba_48948	NEP/26/2021	bovine	99.7	0	O	ME-SA	Ind-2001	e
viba_48932	NEP/22/2021	bovine	99.7	0	O	ME-SA	Ind-2001	e
viba_48920	NEP/15/2021	bovine	99.5	0	O	ME-SA	Ind-2001	e
viba_48924	NEP/19/2021	water buffalo	99.5	0	O	ME-SA	Ind-2001	e
viba_48928	NEP/20/2021	bovine	99.5	0	O	ME-SA	Ind-2001	e
viba_48972	NEP/32/2021	bovine	99.4	0	O	ME-SA	Ind-2001	e
viba_48884	NEP/14/2020	water buffalo	99.4	0	O	ME-SA	Ind-2001	e
viba_48872	NEP/11/2020	bovine	99.4	0	O	ME-SA	Ind-2001	e

Most Closely Related Prototype Sequences

see <http://www.wrlfmd.org/fmdv-genome/fmd-prototype-strains>

sequence	virus name	Host	% Id.	# Ambig.	serotype	topotype	lineage	sublineage
viba_30238	MUR/19/2016	cattle	96.1	0	O	ME-SA	Ind-2001	e
viba_293	BHU/3/2009	cattle	93.0	0	O	ME-SA	Ind-2001	d
viba_541	OMN/7/2001	bovine	92.1	0	O	ME-SA	Ind-2001	b
viba_705	KUW/3/97	bovine	91.2	0	O	ME-SA	Ind-2001	a
viba_397	UAE/4/2008	gazelle	90.5	0	O	ME-SA	Ind-2001	c
viba_766	IRN/31/2009	cattle	89.3	0	O	ME-SA	PanAsia-2	FAR-09
viba_285	UKG/35/2001	porcine	89.3	0	O	ME-SA	PanAsia	
viba_650	IRN/8/2005	ovine	89.1	0	O	ME-SA	PanAsia-2	
viba_666	IRN/18/2010	cattle	88.8	0	O	ME-SA	PanAsia-2	BAL-09
viba_719	IRN/88/2009		88.6	0	O	ME-SA	PanAsia-2	ANT-10

Virus sample name:	NEP/26/2021
Sender reference:	35 Np FMD
Location of origin:	Kathmandu
Country of origin:	Nepal
Date of collection:	17/02/2021
Host species:	bovine
Serotype:	O
Topotype:	ME-SA
Lineage:	Ind-2001
Sublineage:	e
Sequence length:	633
Ambiguities:	0
Material submitted for sequencing:	WRL-LFBK1
Harvest date of material:	13/10/2021
Primers:	O-1C244F/EUR-2B52R, FMD-3161F/FMD-4303R
Received for sequencing:	02/11/2021
Created:	12/11/2021
Last updated:	12/11/2021
VIBASys IDs: sample 48946, genome 48947, sequence viba_48948, sequencing info 48949	

Most Closely Related Sequences

sequence	virus name	Host	% Id.	# Ambig.	serotype	topotype	lineage	sublineage
viba_48932	NEP/22/2021	bovine	100.0	0	O	ME-SA	Ind-2001	e
viba_48920	NEP/15/2021	bovine	99.8	0	O	ME-SA	Ind-2001	e
viba_48940	NEP/24/2021	bovine	99.8	0	O	ME-SA	Ind-2001	e
viba_48924	NEP/19/2021	water buffalo	99.8	0	O	ME-SA	Ind-2001	e
viba_48952	NEP/27/2021	bovine	99.8	0	O	ME-SA	Ind-2001	e
viba_48928	NEP/20/2021	bovine	99.8	0	O	ME-SA	Ind-2001	e
viba_48972	NEP/32/2021	bovine	99.7	0	O	ME-SA	Ind-2001	e
viba_48884	NEP/14/2020	water buffalo	99.7	0	O	ME-SA	Ind-2001	e
viba_48944	NEP/25/2021	bovine	99.7	0	O	ME-SA	Ind-2001	e
viba_48872	NEP/11/2020	bovine	99.7	0	O	ME-SA	Ind-2001	e

Most Closely Related Prototype Sequences

see <http://www.wrlfmd.org/fmdv-genome/fmd-prototype-strains>

sequence	virus name	Host	% Id.	# Ambig.	serotype	topotype	lineage	sublineage
viba_30238	MUR/19/2016	cattle	96.4	0	O	ME-SA	Ind-2001	e
viba_293	BHU/3/2009	cattle	93.4	0	O	ME-SA	Ind-2001	d
viba_541	OMN/7/2001	bovine	92.1	0	O	ME-SA	Ind-2001	b
viba_705	KUW/3/97	bovine	91.5	0	O	ME-SA	Ind-2001	a
viba_397	UAE/4/2008	gazelle	90.5	0	O	ME-SA	Ind-2001	c
viba_766	IRN/31/2009	cattle	89.6	0	O	ME-SA	PanAsia-2	FAR-09
viba_285	UKG/35/2001	porcine	89.6	0	O	ME-SA	PanAsia	
viba_650	IRN/8/2005	ovine	89.4	0	O	ME-SA	PanAsia-2	
viba_666	IRN/18/2010	cattle	89.1	0	O	ME-SA	PanAsia-2	BAL-09
viba_491	TUR/257/2008		89.0	0	O	ME-SA	PanAsia-2	TER-08

Virus sample name:	NEP/27/2021
Sender reference:	36 Np FMD
Location of origin:	Kathmandu
Country of origin:	Nepal
Date of collection:	17/02/2021
Host species:	bovine
Serotype:	O
Topotype:	ME-SA
Lineage:	Ind-2001
Sublineage:	e
Sequence length:	633
Ambiguities:	0
Material submitted for sequencing:	WRL-LFBK1
Harvest date of material:	14/10/2021
Primers:	O-1C244F/EUR-2B52R, FMD-3161F/FMD-4303R
Received for sequencing:	02/11/2021
Created:	12/11/2021
Last updated:	12/11/2021
VIBASys IDs: sample 48950, genome 48951, sequence viba_48952, sequencing info 48953	

Most Closely Related Sequences

sequence	virus name	Host	% Id.	# Ambig.	serotype	topotype	lineage	sublineage
viba_48940	NEP/24/2021	bovine	100.0	0	O	ME-SA	Ind-2001	e
viba_48948	NEP/26/2021	bovine	99.8	0	O	ME-SA	Ind-2001	e
viba_48944	NEP/25/2021	bovine	99.8	0	O	ME-SA	Ind-2001	e
viba_48932	NEP/22/2021	bovine	99.8	0	O	ME-SA	Ind-2001	e
viba_48920	NEP/15/2021	bovine	99.7	0	O	ME-SA	Ind-2001	e
viba_48924	NEP/19/2021	water buffalo	99.7	0	O	ME-SA	Ind-2001	e
viba_48928	NEP/20/2021	bovine	99.7	0	O	ME-SA	Ind-2001	e
viba_48972	NEP/32/2021	bovine	99.5	0	O	ME-SA	Ind-2001	e
viba_48884	NEP/14/2020	water buffalo	99.5	0	O	ME-SA	Ind-2001	e
viba_48872	NEP/11/2020	bovine	99.5	0	O	ME-SA	Ind-2001	e

Most Closely Related Prototype Sequences

see <http://www.wrlfmd.org/fmdv-genome/fmd-prototype-strains>

sequence	virus name	Host	% Id.	# Ambig.	serotype	topotype	lineage	sublineage
viba_30238	MUR/19/2016	cattle	96.2	0	O	ME-SA	Ind-2001	e
viba_293	BHU/3/2009	cattle	93.2	0	O	ME-SA	Ind-2001	d
viba_541	OMN/7/2001	bovine	92.3	0	O	ME-SA	Ind-2001	b
viba_705	KUW/3/97	bovine	91.3	0	O	ME-SA	Ind-2001	a
viba_397	UAE/4/2008	gazelle	90.4	0	O	ME-SA	Ind-2001	c
viba_766	IRN/31/2009	cattle	89.4	0	O	ME-SA	PanAsia-2	FAR-09
viba_285	UKG/35/2001	porcine	89.4	0	O	ME-SA	PanAsia	
viba_650	IRN/8/2005	ovine	89.3	0	O	ME-SA	PanAsia-2	
viba_666	IRN/18/2010	cattle	88.9	0	O	ME-SA	PanAsia-2	BAL-09
viba_719	IRN/88/2009		88.8	0	O	ME-SA	PanAsia-2	ANT-10

Virus sample name:	NEP/28/2021
Sender reference:	39 Np FMD
Location of origin:	Nawalparasi
Country of origin:	Nepal
Date of collection:	23/02/2021
Host species:	bovine
Serotype:	O
Topotype:	ME-SA
Lineage:	Ind-2001
Sublineage:	e
Sequence length:	633
Ambiguities:	0
Material submitted for sequencing:	WRL-LFBK2
Harvest date of material:	20/10/2021
Primers:	O-1C244F/EUR-2B52R, FMD-3161F/FMD-4303R
Received for sequencing:	02/11/2021
Created:	12/11/2021
Last updated:	12/11/2021
VIBASys IDs: sample 48954, genome 48955, sequence viba_48956, sequencing info 48957	

Most Closely Related Sequences

sequence	virus name	Host	% Id.	# Ambig.	serotype	topotype	lineage	sublineage
viba_48968	NEP/31/2021	bovine	100.0	0	O	ME-SA	Ind-2001	e
viba_48964	NEP/30/2021	bovine	100.0	0	O	ME-SA	Ind-2001	e
viba_48984	NEP/35/2021	bovine	100.0	0	O	ME-SA	Ind-2001	e
viba_48960	NEP/29/2021	bovine	100.0	0	O	ME-SA	Ind-2001	e
viba_48972	NEP/32/2021	bovine	99.8	0	O	ME-SA	Ind-2001	e
viba_48884	NEP/14/2020	water buffalo	99.8	0	O	ME-SA	Ind-2001	e
viba_48996	NEP/40/2021	bovine	99.8	0	O	ME-SA	Ind-2001	e
viba_48988	NEP/36/2021	bovine	99.8	0	O	ME-SA	Ind-2001	e
viba_48872	NEP/11/2020	bovine	99.8	0	O	ME-SA	Ind-2001	e
viba_48876	NEP/12/2020	bovine	99.8	0	O	ME-SA	Ind-2001	e

Most Closely Related Prototype Sequences

see <http://www.wrlfmd.org/fmdv-genome/fmd-prototype-strains>

sequence	virus name	Host	% Id.	# Ambig.	serotype	topotype	lineage	sublineage
viba_30238	MUR/19/2016	cattle	96.5	0	O	ME-SA	Ind-2001	e
viba_293	BHU/3/2009	cattle	93.2	0	O	ME-SA	Ind-2001	d
viba_541	OMN/7/2001	bovine	92.0	0	O	ME-SA	Ind-2001	b
viba_705	KUW/3/97	bovine	91.3	0	O	ME-SA	Ind-2001	a
viba_397	UAE/4/2008	gazelle	90.4	0	O	ME-SA	Ind-2001	c
viba_285	UKG/35/2001	porcine	89.4	0	O	ME-SA	PanAsia	
viba_766	IRN/31/2009	cattle	89.1	0	O	ME-SA	PanAsia-2	FAR-09
viba_650	IRN/8/2005	ovine	89.0	0	O	ME-SA	PanAsia-2	
viba_719	IRN/88/2009		88.8	0	O	ME-SA	PanAsia-2	ANT-10
viba_666	IRN/18/2010	cattle	88.6	0	O	ME-SA	PanAsia-2	BAL-09

Virus sample name:	NEP/29/2021
Sender reference:	40 Np FMD
Location of origin:	Nawalparasi
Country of origin:	Nepal
Date of collection:	23/02/2021
Host species:	bovine
Serotype:	O
Topotype:	ME-SA
Lineage:	Ind-2001
Sublineage:	e
Sequence length:	633
Ambiguities:	0
Material submitted for sequencing:	WRL-LFBK1
Harvest date of material:	15/10/2021
Primers:	O-1C244F/EUR-2B52R, FMD-3161F/FMD-4303R
Received for sequencing:	02/11/2021
Created:	12/11/2021
Last updated:	12/11/2021
VIBASys IDs: sample 48958, genome 48959, sequence viba_48960, sequencing info 48961	

Most Closely Related Sequences

sequence	virus name	Host	% Id.	# Ambig.	serotype	topotype	lineage	sublineage
viba_48968	NEP/31/2021	bovine	100.0	0	O	ME-SA	Ind-2001	e
viba_48956	NEP/28/2021	bovine	100.0	0	O	ME-SA	Ind-2001	e
viba_48964	NEP/30/2021	bovine	100.0	0	O	ME-SA	Ind-2001	e
viba_48984	NEP/35/2021	bovine	100.0	0	O	ME-SA	Ind-2001	e
viba_48972	NEP/32/2021	bovine	99.8	0	O	ME-SA	Ind-2001	e
viba_48884	NEP/14/2020	water buffalo	99.8	0	O	ME-SA	Ind-2001	e
viba_48996	NEP/40/2021	bovine	99.8	0	O	ME-SA	Ind-2001	e
viba_48988	NEP/36/2021	bovine	99.8	0	O	ME-SA	Ind-2001	e
viba_48872	NEP/11/2020	bovine	99.8	0	O	ME-SA	Ind-2001	e
viba_48876	NEP/12/2020	bovine	99.8	0	O	ME-SA	Ind-2001	e

Most Closely Related Prototype Sequences

see <http://www.wrlfmd.org/fmdv-genome/fmd-prototype-strains>

sequence	virus name	Host	% Id.	# Ambig.	serotype	topotype	lineage	sublineage
viba_30238	MUR/19/2016	cattle	96.5	0	O	ME-SA	Ind-2001	e
viba_293	BHU/3/2009	cattle	93.2	0	O	ME-SA	Ind-2001	d
viba_541	OMN/7/2001	bovine	92.0	0	O	ME-SA	Ind-2001	b
viba_705	KUW/3/97	bovine	91.3	0	O	ME-SA	Ind-2001	a
viba_397	UAE/4/2008	gazelle	90.4	0	O	ME-SA	Ind-2001	c
viba_285	UKG/35/2001	porcine	89.4	0	O	ME-SA	PanAsia	
viba_766	IRN/31/2009	cattle	89.1	0	O	ME-SA	PanAsia-2	FAR-09
viba_650	IRN/8/2005	ovine	89.0	0	O	ME-SA	PanAsia-2	
viba_719	IRN/88/2009		88.8	0	O	ME-SA	PanAsia-2	ANT-10
viba_666	IRN/18/2010	cattle	88.6	0	O	ME-SA	PanAsia-2	BAL-09

Virus sample name:	NEP/30/2021
Sender reference:	41 Np FMD
Location of origin:	Nawalparasi
Country of origin:	Nepal
Date of collection:	23/02/2021
Host species:	bovine
Serotype:	O
Topotype:	ME-SA
Lineage:	Ind-2001
Sublineage:	e
Sequence length:	633
Ambiguities:	0
Material submitted for sequencing:	WRL-LFBK1
Harvest date of material:	15/10/2021
Primers:	O-1C244F/EUR-2B52R, FMD-3161F/FMD-4303R
Received for sequencing:	02/11/2021
Created:	12/11/2021
Last updated:	12/11/2021
VIBASys IDs: sample 48962, genome 48963, sequence viba_48964, sequencing info 48965	

Most Closely Related Sequences

sequence	virus name	Host	% Id.	# Ambig.	serotype	topotype	lineage	sublineage
viba_48968	NEP/31/2021	bovine	100.0	0	O	ME-SA	Ind-2001	e
viba_48956	NEP/28/2021	bovine	100.0	0	O	ME-SA	Ind-2001	e
viba_48984	NEP/35/2021	bovine	100.0	0	O	ME-SA	Ind-2001	e
viba_48960	NEP/29/2021	bovine	100.0	0	O	ME-SA	Ind-2001	e
viba_48972	NEP/32/2021	bovine	99.8	0	O	ME-SA	Ind-2001	e
viba_48884	NEP/14/2020	water buffalo	99.8	0	O	ME-SA	Ind-2001	e
viba_48996	NEP/40/2021	bovine	99.8	0	O	ME-SA	Ind-2001	e
viba_48988	NEP/36/2021	bovine	99.8	0	O	ME-SA	Ind-2001	e
viba_48872	NEP/11/2020	bovine	99.8	0	O	ME-SA	Ind-2001	e
viba_48876	NEP/12/2020	bovine	99.8	0	O	ME-SA	Ind-2001	e

Most Closely Related Prototype Sequences

see <http://www.wrlfmd.org/fmdv-genome/fmd-prototype-strains>

sequence	virus name	Host	% Id.	# Ambig.	serotype	topotype	lineage	sublineage
viba_30238	MUR/19/2016	cattle	96.5	0	O	ME-SA	Ind-2001	e
viba_293	BHU/3/2009	cattle	93.2	0	O	ME-SA	Ind-2001	d
viba_541	OMN/7/2001	bovine	92.0	0	O	ME-SA	Ind-2001	b
viba_705	KUW/3/97	bovine	91.3	0	O	ME-SA	Ind-2001	a
viba_397	UAE/4/2008	gazelle	90.4	0	O	ME-SA	Ind-2001	c
viba_285	UKG/35/2001	porcine	89.4	0	O	ME-SA	PanAsia	
viba_766	IRN/31/2009	cattle	89.1	0	O	ME-SA	PanAsia-2	FAR-09
viba_650	IRN/8/2005	ovine	89.0	0	O	ME-SA	PanAsia-2	
viba_719	IRN/88/2009		88.8	0	O	ME-SA	PanAsia-2	ANT-10
viba_666	IRN/18/2010	cattle	88.6	0	O	ME-SA	PanAsia-2	BAL-09

Virus sample name:	NEP/31/2021
Sender reference:	42 Np FMD
Location of origin:	Nawalparasi
Country of origin:	Nepal
Date of collection:	23/02/2021
Host species:	bovine
Serotype:	O
Topotype:	ME-SA
Lineage:	Ind-2001
Sublineage:	e
Sequence length:	633
Ambiguities:	0
Material submitted for sequencing:	orig. fluid
Harvest date of material:	n/a
Primers:	O-1C244F/EUR-2B52R, FMD-3161F/FMD-4303R
Received for sequencing:	03/11/2021
Created:	12/11/2021
Last updated:	12/11/2021
VIBASys IDs: sample 48966, genome 48967, sequence viba_48968, sequencing info 48969	

Most Closely Related Sequences

sequence	virus name	Host	% Id.	# Ambig.	serotype	topotype	lineage	sublineage
viba_48956	NEP/28/2021	bovine	100.0	0	O	ME-SA	Ind-2001	e
viba_48964	NEP/30/2021	bovine	100.0	0	O	ME-SA	Ind-2001	e
viba_48984	NEP/35/2021	bovine	100.0	0	O	ME-SA	Ind-2001	e
viba_48960	NEP/29/2021	bovine	100.0	0	O	ME-SA	Ind-2001	e
viba_48972	NEP/32/2021	bovine	99.8	0	O	ME-SA	Ind-2001	e
viba_48884	NEP/14/2020	water buffalo	99.8	0	O	ME-SA	Ind-2001	e
viba_48996	NEP/40/2021	bovine	99.8	0	O	ME-SA	Ind-2001	e
viba_48988	NEP/36/2021	bovine	99.8	0	O	ME-SA	Ind-2001	e
viba_48872	NEP/11/2020	bovine	99.8	0	O	ME-SA	Ind-2001	e
viba_48876	NEP/12/2020	bovine	99.8	0	O	ME-SA	Ind-2001	e

Most Closely Related Prototype Sequences

see <http://www.wrlfmd.org/fmdv-genome/fmd-prototype-strains>

sequence	virus name	Host	% Id.	# Ambig.	serotype	topotype	lineage	sublineage
viba_30238	MUR/19/2016	cattle	96.5	0	O	ME-SA	Ind-2001	e
viba_293	BHU/3/2009	cattle	93.2	0	O	ME-SA	Ind-2001	d
viba_541	OMN/7/2001	bovine	92.0	0	O	ME-SA	Ind-2001	b
viba_705	KUW/3/97	bovine	91.3	0	O	ME-SA	Ind-2001	a
viba_397	UAE/4/2008	gazelle	90.4	0	O	ME-SA	Ind-2001	c
viba_285	UKG/35/2001	porcine	89.4	0	O	ME-SA	PanAsia	
viba_766	IRN/31/2009	cattle	89.1	0	O	ME-SA	PanAsia-2	FAR-09
viba_650	IRN/8/2005	ovine	89.0	0	O	ME-SA	PanAsia-2	
viba_719	IRN/88/2009		88.8	0	O	ME-SA	PanAsia-2	ANT-10
viba_666	IRN/18/2010	cattle	88.6	0	O	ME-SA	PanAsia-2	BAL-09

Virus sample name:	NEP/32/2021
Sender reference:	43 Np FMD
Location of origin:	Nawalparasi
Country of origin:	Nepal
Date of collection:	23/02/2021
Host species:	bovine
Serotype:	O
Topotype:	ME-SA
Lineage:	Ind-2001
Sublineage:	e
Sequence length:	633
Ambiguities:	0
Material submitted for sequencing:	WRL-LFBK1
Harvest date of material:	15/10/2021
Primers:	O-1C244F/EUR-2B52R, FMD-3161F/FMD-4303R
Received for sequencing:	02/11/2021
Created:	12/11/2021
Last updated:	12/11/2021
VIBASys IDs: sample 48970, genome 48971, sequence viba_48972, sequencing info 48973	

Most Closely Related Sequences

sequence	virus name	Host	% Id.	# Ambig.	serotype	topotype	lineage	sublineage
viba_48884	NEP/14/2020	water buffalo	100.0	0	O	ME-SA	Ind-2001	e
viba_48872	NEP/11/2020	bovine	100.0	0	O	ME-SA	Ind-2001	e
viba_48876	NEP/12/2020	bovine	100.0	0	O	ME-SA	Ind-2001	e
viba_48936	NEP/23/2021	bovine	100.0	0	O	ME-SA	Ind-2001	e
viba_48880	NEP/13/2020	bovine	100.0	0	O	ME-SA	Ind-2001	e
viba_48868	NEP/10/2020	bovine	100.0	0	O	ME-SA	Ind-2001	e
viba_48920	NEP/15/2021	bovine	99.8	0	O	ME-SA	Ind-2001	e
viba_48924	NEP/19/2021	water buffalo	99.8	0	O	ME-SA	Ind-2001	e
viba_48968	NEP/31/2021	bovine	99.8	0	O	ME-SA	Ind-2001	e
viba_48956	NEP/28/2021	bovine	99.8	0	O	ME-SA	Ind-2001	e

Most Closely Related Prototype Sequences

see <http://www.wrlfmd.org/fmdv-genome/fmd-prototype-strains>

sequence	virus name	Host	% Id.	# Ambig.	serotype	topotype	lineage	sublineage
viba_30238	MUR/19/2016	cattle	96.4	0	O	ME-SA	Ind-2001	e
viba_293	BHU/3/2009	cattle	93.4	0	O	ME-SA	Ind-2001	d
viba_541	OMN/7/2001	bovine	92.1	0	O	ME-SA	Ind-2001	b
viba_705	KUW/3/97	bovine	91.5	0	O	ME-SA	Ind-2001	a
viba_397	UAE/4/2008	gazelle	90.5	0	O	ME-SA	Ind-2001	c
viba_285	UKG/35/2001	porcine	89.6	0	O	ME-SA	PanAsia	
viba_766	IRN/31/2009	cattle	89.3	0	O	ME-SA	PanAsia-2	FAR-09
viba_650	IRN/8/2005	ovine	89.1	0	O	ME-SA	PanAsia-2	
viba_666	IRN/18/2010	cattle	88.8	0	O	ME-SA	PanAsia-2	BAL-09
viba_719	IRN/88/2009		88.6	0	O	ME-SA	PanAsia-2	ANT-10

Virus sample name:	NEP/33/2021
Sender reference:	44 Np FMD
Location of origin:	Nawalparasi
Country of origin:	Nepal
Date of collection:	23/02/2021
Host species:	bovine
Serotype:	O
Topotype:	ME-SA
Lineage:	Ind-2001
Sublineage:	e
Sequence length:	633
Ambiguities:	0
Material submitted for sequencing:	WRL-LFBK1
Harvest date of material:	15/10/2021
Primers:	O-1C244F/EUR-2B52R, FMD-3161F/FMD-4303R
Received for sequencing:	02/11/2021
Created:	12/11/2021
Last updated:	12/11/2021
VIBASys IDs: sample 48974, genome 48975, sequence viba_48976, sequencing info 48977	

Most Closely Related Sequences

sequence	virus name	Host	% Id.	# Ambig.	serotype	topotype	lineage	sublineage
viba_48968	NEP/31/2021	bovine	99.8	0	O	ME-SA	Ind-2001	e
viba_48956	NEP/28/2021	bovine	99.8	0	O	ME-SA	Ind-2001	e
viba_48964	NEP/30/2021	bovine	99.8	0	O	ME-SA	Ind-2001	e
viba_48992	NEP/37/2021	bovine	99.8	0	O	ME-SA	Ind-2001	e
viba_48984	NEP/35/2021	bovine	99.8	0	O	ME-SA	Ind-2001	e
viba_48960	NEP/29/2021	bovine	99.8	0	O	ME-SA	Ind-2001	e
viba_48972	NEP/32/2021	bovine	99.7	0	O	ME-SA	Ind-2001	e
viba_48884	NEP/14/2020	water buffalo	99.7	0	O	ME-SA	Ind-2001	e
viba_48996	NEP/40/2021	bovine	99.7	0	O	ME-SA	Ind-2001	e
viba_48988	NEP/36/2021	bovine	99.7	0	O	ME-SA	Ind-2001	e

Most Closely Related Prototype Sequences

see <http://www.wrlfmd.org/fmdv-genome/fmd-prototype-strains>

sequence	virus name	Host	% Id.	# Ambig.	serotype	topotype	lineage	sublineage
viba_30238	MUR/19/2016	cattle	96.4	0	O	ME-SA	Ind-2001	e
viba_293	BHU/3/2009	cattle	93.0	0	O	ME-SA	Ind-2001	d
viba_541	OMN/7/2001	bovine	91.8	0	O	ME-SA	Ind-2001	b
viba_705	KUW/3/97	bovine	91.2	0	O	ME-SA	Ind-2001	a
viba_397	UAE/4/2008	gazelle	90.2	0	O	ME-SA	Ind-2001	c
viba_285	UKG/35/2001	porcine	89.3	0	O	ME-SA	PanAsia	
viba_766	IRN/31/2009	cattle	88.9	0	O	ME-SA	PanAsia-2	FAR-09
viba_650	IRN/8/2005	ovine	88.8	0	O	ME-SA	PanAsia-2	
viba_719	IRN/88/2009		88.6	0	O	ME-SA	PanAsia-2	ANT-10
viba_666	IRN/18/2010	cattle	88.5	0	O	ME-SA	PanAsia-2	BAL-09

Virus sample name:	NEP/34/2021
Sender reference:	45 Np FMD
Location of origin:	Nawalparasi
Country of origin:	Nepal
Date of collection:	23/02/2021
Host species:	bovine
Serotype:	O
Topotype:	ME-SA
Lineage:	Ind-2001
Sublineage:	e
Sequence length:	633
Ambiguities:	0
Material submitted for sequencing:	WRL-LFBK2
Harvest date of material:	20/10/2021
Primers:	O-1C244F/EUR-2B52R, FMD-3161F/FMD-4303R
Received for sequencing:	02/11/2021
Created:	12/11/2021
Last updated:	12/11/2021
VIBASys IDs: sample 48978, genome 48979, sequence viba_48980, sequencing info 48981	

Most Closely Related Sequences

sequence	virus name	Host	% Id.	# Ambig.	serotype	topotype	lineage	sublineage
viba_48996	NEP/40/2021	bovine	100.0	0	O	ME-SA	Ind-2001	e
viba_48988	NEP/36/2021	bovine	100.0	0	O	ME-SA	Ind-2001	e
viba_48968	NEP/31/2021	bovine	99.8	0	O	ME-SA	Ind-2001	e
viba_48956	NEP/28/2021	bovine	99.8	0	O	ME-SA	Ind-2001	e
viba_48964	NEP/30/2021	bovine	99.8	0	O	ME-SA	Ind-2001	e
viba_48984	NEP/35/2021	bovine	99.8	0	O	ME-SA	Ind-2001	e
viba_48960	NEP/29/2021	bovine	99.8	0	O	ME-SA	Ind-2001	e
viba_48972	NEP/32/2021	bovine	99.7	0	O	ME-SA	Ind-2001	e
viba_48884	NEP/14/2020	water buffalo	99.7	0	O	ME-SA	Ind-2001	e
viba_48872	NEP/11/2020	bovine	99.7	0	O	ME-SA	Ind-2001	e

Most Closely Related Prototype Sequences

see <http://www.wrlfmd.org/fmdv-genome/fmd-prototype-strains>

sequence	virus name	Host	% Id.	# Ambig.	serotype	topotype	lineage	sublineage
viba_30238	MUR/19/2016	cattle	96.4	0	O	ME-SA	Ind-2001	e
viba_293	BHU/3/2009	cattle	93.0	0	O	ME-SA	Ind-2001	d
viba_541	OMN/7/2001	bovine	91.8	0	O	ME-SA	Ind-2001	b
viba_705	KUW/3/97	bovine	91.2	0	O	ME-SA	Ind-2001	a
viba_397	UAE/4/2008	gazelle	90.2	0	O	ME-SA	Ind-2001	c
viba_285	UKG/35/2001	porcine	89.3	0	O	ME-SA	PanAsia	
viba_766	IRN/31/2009	cattle	88.9	0	O	ME-SA	PanAsia-2	FAR-09
viba_650	IRN/8/2005	ovine	88.8	0	O	ME-SA	PanAsia-2	
viba_719	IRN/88/2009		88.6	0	O	ME-SA	PanAsia-2	ANT-10
viba_666	IRN/18/2010	cattle	88.5	0	O	ME-SA	PanAsia-2	BAL-09

Virus sample name:	NEP/35/2021
Sender reference:	55 Np FMD
Location of origin:	Nawalparasi
Country of origin:	Nepal
Date of collection:	23/02/2021
Host species:	bovine
Serotype:	O
Topotype:	ME-SA
Lineage:	Ind-2001
Sublineage:	e
Sequence length:	633
Ambiguities:	0
Material submitted for sequencing:	WRL-LFBK1
Harvest date of material:	16/10/2021
Primers:	O-1C244F/EUR-2B52R, FMD-3161F/FMD-4303R
Received for sequencing:	02/11/2021
Created:	12/11/2021
Last updated:	12/11/2021
VIBASys IDs: sample 48982, genome 48983, sequence viba_48984, sequencing info 48985	

Most Closely Related Sequences

sequence	virus name	Host	% Id.	# Ambig.	serotype	topotype	lineage	sublineage
viba_48968	NEP/31/2021	bovine	100.0	0	O	ME-SA	Ind-2001	e
viba_48956	NEP/28/2021	bovine	100.0	0	O	ME-SA	Ind-2001	e
viba_48964	NEP/30/2021	bovine	100.0	0	O	ME-SA	Ind-2001	e
viba_48960	NEP/29/2021	bovine	100.0	0	O	ME-SA	Ind-2001	e
viba_48972	NEP/32/2021	bovine	99.8	0	O	ME-SA	Ind-2001	e
viba_48884	NEP/14/2020	water buffalo	99.8	0	O	ME-SA	Ind-2001	e
viba_48996	NEP/40/2021	bovine	99.8	0	O	ME-SA	Ind-2001	e
viba_48988	NEP/36/2021	bovine	99.8	0	O	ME-SA	Ind-2001	e
viba_48872	NEP/11/2020	bovine	99.8	0	O	ME-SA	Ind-2001	e
viba_48876	NEP/12/2020	bovine	99.8	0	O	ME-SA	Ind-2001	e

Most Closely Related Prototype Sequences

see <http://www.wrlfmd.org/fmdv-genome/fmd-prototype-strains>

sequence	virus name	Host	% Id.	# Ambig.	serotype	topotype	lineage	sublineage
viba_30238	MUR/19/2016	cattle	96.5	0	O	ME-SA	Ind-2001	e
viba_293	BHU/3/2009	cattle	93.2	0	O	ME-SA	Ind-2001	d
viba_541	OMN/7/2001	bovine	92.0	0	O	ME-SA	Ind-2001	b
viba_705	KUW/3/97	bovine	91.3	0	O	ME-SA	Ind-2001	a
viba_397	UAE/4/2008	gazelle	90.4	0	O	ME-SA	Ind-2001	c
viba_285	UKG/35/2001	porcine	89.4	0	O	ME-SA	PanAsia	
viba_766	IRN/31/2009	cattle	89.1	0	O	ME-SA	PanAsia-2	FAR-09
viba_650	IRN/8/2005	ovine	89.0	0	O	ME-SA	PanAsia-2	
viba_719	IRN/88/2009		88.8	0	O	ME-SA	PanAsia-2	ANT-10
viba_666	IRN/18/2010	cattle	88.6	0	O	ME-SA	PanAsia-2	BAL-09

Virus sample name:	NEP/36/2021
Sender reference:	56 Np FMD
Location of origin:	Nawalparasi
Country of origin:	Nepal
Date of collection:	23/02/2021
Host species:	bovine
Serotype:	O
Topotype:	ME-SA
Lineage:	Ind-2001
Sublineage:	e
Sequence length:	633
Ambiguities:	0
Material submitted for sequencing:	WRL-LFBK2
Harvest date of material:	20/10/2021
Primers:	O-1C244F/EUR-2B52R, FMD-3161F/FMD-4303R
Received for sequencing:	02/11/2021
Created:	12/11/2021
Last updated:	12/11/2021
VIBASys IDs: sample 48986, genome 48987, sequence viba_48988, sequencing info 48989	

Most Closely Related Sequences

sequence	virus name	Host	% Id.	# Ambig.	serotype	topotype	lineage	sublineage
viba_48996	NEP/40/2021	bovine	100.0	0	O	ME-SA	Ind-2001	e
viba_48980	NEP/34/2021	bovine	100.0	0	O	ME-SA	Ind-2001	e
viba_48968	NEP/31/2021	bovine	99.8	0	O	ME-SA	Ind-2001	e
viba_48956	NEP/28/2021	bovine	99.8	0	O	ME-SA	Ind-2001	e
viba_48964	NEP/30/2021	bovine	99.8	0	O	ME-SA	Ind-2001	e
viba_48984	NEP/35/2021	bovine	99.8	0	O	ME-SA	Ind-2001	e
viba_48960	NEP/29/2021	bovine	99.8	0	O	ME-SA	Ind-2001	e
viba_48972	NEP/32/2021	bovine	99.7	0	O	ME-SA	Ind-2001	e
viba_48884	NEP/14/2020	water buffalo	99.7	0	O	ME-SA	Ind-2001	e
viba_48872	NEP/11/2020	bovine	99.7	0	O	ME-SA	Ind-2001	e

Most Closely Related Prototype Sequences

see <http://www.wrlfmd.org/fmdv-genome/fmd-prototype-strains>

sequence	virus name	Host	% Id.	# Ambig.	serotype	topotype	lineage	sublineage
viba_30238	MUR/19/2016	cattle	96.4	0	O	ME-SA	Ind-2001	e
viba_293	BHU/3/2009	cattle	93.0	0	O	ME-SA	Ind-2001	d
viba_541	OMN/7/2001	bovine	91.8	0	O	ME-SA	Ind-2001	b
viba_705	KUW/3/97	bovine	91.2	0	O	ME-SA	Ind-2001	a
viba_397	UAE/4/2008	gazelle	90.2	0	O	ME-SA	Ind-2001	c
viba_285	UKG/35/2001	porcine	89.3	0	O	ME-SA	PanAsia	
viba_766	IRN/31/2009	cattle	88.9	0	O	ME-SA	PanAsia-2	FAR-09
viba_650	IRN/8/2005	ovine	88.8	0	O	ME-SA	PanAsia-2	
viba_719	IRN/88/2009		88.6	0	O	ME-SA	PanAsia-2	ANT-10
viba_666	IRN/18/2010	cattle	88.5	0	O	ME-SA	PanAsia-2	BAL-09

Virus sample name:	NEP/37/2021
Sender reference:	57 Np FMD
Location of origin:	Nawalparasi
Country of origin:	Nepal
Date of collection:	23/02/2021
Host species:	bovine
Serotype:	O
Topotype:	ME-SA
Lineage:	Ind-2001
Sublineage:	e
Sequence length:	633
Ambiguities:	0
Material submitted for sequencing:	WRL-LFBK1
Harvest date of material:	16/10/2021
Primers:	O-1C244F/EUR-2B52R, FMD-3161F/FMD-4303R
Received for sequencing:	02/11/2021
Created:	12/11/2021
Last updated:	12/11/2021
VIBASys IDs: sample 48990, genome 48991, sequence viba_48992, sequencing info 48993	

Most Closely Related Sequences

sequence	virus name	Host	% Id.	# Ambig.	serotype	topotype	lineage	sublineage
viba_48976	NEP/33/2021	bovine	99.8	0	O	ME-SA	Ind-2001	e
viba_48968	NEP/31/2021	bovine	99.7	0	O	ME-SA	Ind-2001	e
viba_48956	NEP/28/2021	bovine	99.7	0	O	ME-SA	Ind-2001	e
viba_48964	NEP/30/2021	bovine	99.7	0	O	ME-SA	Ind-2001	e
viba_48984	NEP/35/2021	bovine	99.7	0	O	ME-SA	Ind-2001	e
viba_48960	NEP/29/2021	bovine	99.7	0	O	ME-SA	Ind-2001	e
viba_48972	NEP/32/2021	bovine	99.5	0	O	ME-SA	Ind-2001	e
viba_48884	NEP/14/2020	water buffalo	99.5	0	O	ME-SA	Ind-2001	e
viba_48996	NEP/40/2021	bovine	99.5	0	O	ME-SA	Ind-2001	e
viba_48988	NEP/36/2021	bovine	99.5	0	O	ME-SA	Ind-2001	e

Most Closely Related Prototype Sequences

see <http://www.wrlfmd.org/fmdv-genome/fmd-prototype-strains>

sequence	virus name	Host	% Id.	# Ambig.	serotype	topotype	lineage	sublineage
viba_30238	MUR/19/2016	cattle	96.2	0	O	ME-SA	Ind-2001	e
viba_293	BHU/3/2009	cattle	92.9	0	O	ME-SA	Ind-2001	d
viba_541	OMN/7/2001	bovine	91.6	0	O	ME-SA	Ind-2001	b
viba_705	KUW/3/97	bovine	91.0	0	O	ME-SA	Ind-2001	a
viba_397	UAE/4/2008	gazelle	90.1	0	O	ME-SA	Ind-2001	c
viba_285	UKG/35/2001	porcine	89.1	0	O	ME-SA	PanAsia	
viba_766	IRN/31/2009	cattle	88.8	0	O	ME-SA	PanAsia-2	FAR-09
viba_650	IRN/8/2005	ovine	88.6	0	O	ME-SA	PanAsia-2	
viba_719	IRN/88/2009		88.6	0	O	ME-SA	PanAsia-2	ANT-10
viba_666	IRN/18/2010	cattle	88.3	0	O	ME-SA	PanAsia-2	BAL-09

Virus sample name:	NEP/40/2021
Sender reference:	60 Np FMD
Location of origin:	Nawalpur
Country of origin:	Nepal
Date of collection:	02/03/2021
Host species:	bovine
Serotype:	O
Topotype:	ME-SA
Lineage:	Ind-2001
Sublineage:	e
Sequence length:	633
Ambiguities:	0
Material submitted for sequencing:	orig. fluid
Harvest date of material:	n/a
Primers:	O-1C244F/EUR-2B52R, FMD-3161F/FMD-4303R
Received for sequencing:	03/11/2021
Created:	12/11/2021
Last updated:	12/11/2021
VIBASys IDs: sample 48994, genome 48995, sequence viba_48996, sequencing info 48997	

Most Closely Related Sequences

sequence	virus name	Host	% Id.	# Ambig.	serotype	topotype	lineage	sublineage
viba_48988	NEP/36/2021	bovine	100.0	0	O	ME-SA	Ind-2001	e
viba_48980	NEP/34/2021	bovine	100.0	0	O	ME-SA	Ind-2001	e
viba_48968	NEP/31/2021	bovine	99.8	0	O	ME-SA	Ind-2001	e
viba_48956	NEP/28/2021	bovine	99.8	0	O	ME-SA	Ind-2001	e
viba_48964	NEP/30/2021	bovine	99.8	0	O	ME-SA	Ind-2001	e
viba_48984	NEP/35/2021	bovine	99.8	0	O	ME-SA	Ind-2001	e
viba_48960	NEP/29/2021	bovine	99.8	0	O	ME-SA	Ind-2001	e
viba_48972	NEP/32/2021	bovine	99.7	0	O	ME-SA	Ind-2001	e
viba_48884	NEP/14/2020	water buffalo	99.7	0	O	ME-SA	Ind-2001	e
viba_48872	NEP/11/2020	bovine	99.7	0	O	ME-SA	Ind-2001	e

Most Closely Related Prototype Sequences

see <http://www.wrlfmd.org/fmdv-genome/fmd-prototype-strains>

sequence	virus name	Host	% Id.	# Ambig.	serotype	topotype	lineage	sublineage
viba_30238	MUR/19/2016	cattle	96.4	0	O	ME-SA	Ind-2001	e
viba_293	BHU/3/2009	cattle	93.0	0	O	ME-SA	Ind-2001	d
viba_541	OMN/7/2001	bovine	91.8	0	O	ME-SA	Ind-2001	b
viba_705	KUW/3/97	bovine	91.2	0	O	ME-SA	Ind-2001	a
viba_397	UAE/4/2008	gazelle	90.2	0	O	ME-SA	Ind-2001	c
viba_285	UKG/35/2001	porcine	89.3	0	O	ME-SA	PanAsia	
viba_766	IRN/31/2009	cattle	88.9	0	O	ME-SA	PanAsia-2	FAR-09
viba_650	IRN/8/2005	ovine	88.8	0	O	ME-SA	PanAsia-2	
viba_719	IRN/88/2009		88.6	0	O	ME-SA	PanAsia-2	ANT-10
viba_666	IRN/18/2010	cattle	88.5	0	O	ME-SA	PanAsia-2	BAL-09

Virus sample name:	NEP/41/2021
Sender reference:	46 Np FMD
Location of origin:	Dhankuta
Country of origin:	Nepal
Date of collection:	14/03/2021
Host species:	bovine
Serotype:	O
Topotype:	ME-SA
Lineage:	Ind-2001
Sublineage:	e
Sequence length:	633
Ambiguities:	0
Material submitted for sequencing:	WRL-LFBK1
Harvest date of material:	16/10/2021
Primers:	O-1C244F/EUR-2B52R, FMD-3161F/FMD-4303R
Received for sequencing:	02/11/2021
Created:	12/11/2021
Last updated:	12/11/2021
VIBASys IDs: sample 48998, genome 48999, sequence viba_49000, sequencing info 49001	

Most Closely Related Sequences

sequence	virus name	Host	% Id.	# Ambig.	serotype	topotype	lineage	sublineage
viba_48920	NEP/15/2021	bovine	99.4	0	O	ME-SA	Ind-2001	e
viba_48924	NEP/19/2021	water buffalo	99.4	0	O	ME-SA	Ind-2001	e
viba_48928	NEP/20/2021	bovine	99.4	0	O	ME-SA	Ind-2001	e
viba_48972	NEP/32/2021	bovine	99.2	0	O	ME-SA	Ind-2001	e
viba_48948	NEP/26/2021	bovine	99.2	0	O	ME-SA	Ind-2001	e
viba_48884	NEP/14/2020	water buffalo	99.2	0	O	ME-SA	Ind-2001	e
viba_48872	NEP/11/2020	bovine	99.2	0	O	ME-SA	Ind-2001	e
viba_48876	NEP/12/2020	bovine	99.2	0	O	ME-SA	Ind-2001	e
viba_48916	NEP/14/2021	bovine	99.2	0	O	ME-SA	Ind-2001	e
viba_48936	NEP/23/2021	bovine	99.2	0	O	ME-SA	Ind-2001	e

Most Closely Related Prototype Sequences

see <http://www.wrlfmd.org/fmdv-genome/fmd-prototype-strains>

sequence	virus name	Host	% Id.	# Ambig.	serotype	topotype	lineage	sublineage
viba_30238	MUR/19/2016	cattle	95.9	0	O	ME-SA	Ind-2001	e
viba_293	BHU/3/2009	cattle	92.9	0	O	ME-SA	Ind-2001	d
viba_541	OMN/7/2001	bovine	91.6	0	O	ME-SA	Ind-2001	b
viba_705	KUW/3/97	bovine	91.0	0	O	ME-SA	Ind-2001	a
viba_397	UAE/4/2008	gazelle	90.4	0	O	ME-SA	Ind-2001	c
viba_285	UKG/35/2001	porcine	89.1	0	O	ME-SA	PanAsia	
viba_766	IRN/31/2009	cattle	88.8	0	O	ME-SA	PanAsia-2	FAR-09
viba_650	IRN/8/2005	ovine	88.6	0	O	ME-SA	PanAsia-2	
viba_666	IRN/18/2010	cattle	88.5	0	O	ME-SA	PanAsia-2	BAL-09
viba_860	IRN/6/2015	cattle	88.3	0	O	ME-SA	PanAsia-2	QOM-15

Virus sample name:	NEP/43/2021
Sender reference:	47 Np FMD
Location of origin:	Illam
Country of origin:	Nepal
Date of collection:	25/03/2021
Host species:	bovine
Serotype:	O
Topotype:	ME-SA
Lineage:	Ind-2001
Sublineage:	e
Sequence length:	633
Ambiguities:	0
Material submitted for sequencing:	WRL-LFBK1
Harvest date of material:	21/10/2021
Primers:	O-1C244F/EUR-2B52R, FMD-3161F/FMD-4303R
Received for sequencing:	02/11/2021
Created:	12/11/2021
Last updated:	12/11/2021
VIBASys IDs: sample 49002, genome 49003, sequence viba_49004, sequencing info 49005	

Most Closely Related Sequences

sequence	virus name	Host	% Id.	# Ambig.	serotype	topotype	lineage	sublineage
viba_49008	NEP/44/2021	bovine	100.0	0	O	ME-SA	Ind-2001	e
viba_48972	NEP/32/2021	bovine	99.7	0	O	ME-SA	Ind-2001	e
viba_48884	NEP/14/2020	water buffalo	99.7	0	O	ME-SA	Ind-2001	e
viba_48872	NEP/11/2020	bovine	99.7	0	O	ME-SA	Ind-2001	e
viba_48876	NEP/12/2020	bovine	99.7	0	O	ME-SA	Ind-2001	e
viba_48936	NEP/23/2021	bovine	99.7	0	O	ME-SA	Ind-2001	e
viba_48880	NEP/13/2020	bovine	99.7	0	O	ME-SA	Ind-2001	e
viba_48868	NEP/10/2020	bovine	99.7	0	O	ME-SA	Ind-2001	e
viba_48920	NEP/15/2021	bovine	99.5	0	O	ME-SA	Ind-2001	e
viba_48924	NEP/19/2021	water buffalo	99.5	0	O	ME-SA	Ind-2001	e

Most Closely Related Prototype Sequences

see <http://www.wrlfmd.org/fmdv-genome/fmd-prototype-strains>

sequence	virus name	Host	% Id.	# Ambig.	serotype	topotype	lineage	sublineage
viba_30238	MUR/19/2016	cattle	96.1	0	O	ME-SA	Ind-2001	e
viba_293	BHU/3/2009	cattle	93.0	0	O	ME-SA	Ind-2001	d
viba_541	OMN/7/2001	bovine	91.8	0	O	ME-SA	Ind-2001	b
viba_705	KUW/3/97	bovine	91.2	0	O	ME-SA	Ind-2001	a
viba_397	UAE/4/2008	gazelle	90.2	0	O	ME-SA	Ind-2001	c
viba_285	UKG/35/2001	porcine	89.3	0	O	ME-SA	PanAsia	
viba_766	IRN/31/2009	cattle	88.9	0	O	ME-SA	PanAsia-2	FAR-09
viba_650	IRN/8/2005	ovine	88.8	0	O	ME-SA	PanAsia-2	
viba_666	IRN/18/2010	cattle	88.5	0	O	ME-SA	PanAsia-2	BAL-09
viba_719	IRN/88/2009		88.3	0	O	ME-SA	PanAsia-2	ANT-10

Virus sample name:	NEP/44/2021
Sender reference:	48 Np FMD
Location of origin:	Illam
Country of origin:	Nepal
Date of collection:	25/03/2021
Host species:	bovine
Serotype:	O
Topotype:	ME-SA
Lineage:	Ind-2001
Sublineage:	e
Sequence length:	633
Ambiguities:	0
Material submitted for sequencing:	orig. fluid
Harvest date of material:	n/a
Primers:	O-1C244F/EUR-2B52R, FMD-3161F/FMD-4303R
Received for sequencing:	03/11/2021
Created:	12/11/2021
Last updated:	12/11/2021
VIBASys IDs: sample 49006, genome 49007, sequence viba_49008, sequencing info 49009	

Most Closely Related Sequences

sequence	virus name	Host	% Id.	# Ambig.	serotype	topotype	lineage	sublineage
viba_49004	NEP/43/2021	bovine	100.0	0	O	ME-SA	Ind-2001	e
viba_48972	NEP/32/2021	bovine	99.7	0	O	ME-SA	Ind-2001	e
viba_48884	NEP/14/2020	water buffalo	99.7	0	O	ME-SA	Ind-2001	e
viba_48872	NEP/11/2020	bovine	99.7	0	O	ME-SA	Ind-2001	e
viba_48876	NEP/12/2020	bovine	99.7	0	O	ME-SA	Ind-2001	e
viba_48936	NEP/23/2021	bovine	99.7	0	O	ME-SA	Ind-2001	e
viba_48880	NEP/13/2020	bovine	99.7	0	O	ME-SA	Ind-2001	e
viba_48868	NEP/10/2020	bovine	99.7	0	O	ME-SA	Ind-2001	e
viba_48920	NEP/15/2021	bovine	99.5	0	O	ME-SA	Ind-2001	e
viba_48924	NEP/19/2021	water buffalo	99.5	0	O	ME-SA	Ind-2001	e

Most Closely Related Prototype Sequences

see <http://www.wrlfmd.org/fmdv-genome/fmd-prototype-strains>

sequence	virus name	Host	% Id.	# Ambig.	serotype	topotype	lineage	sublineage
viba_30238	MUR/19/2016	cattle	96.1	0	O	ME-SA	Ind-2001	e
viba_293	BHU/3/2009	cattle	93.0	0	O	ME-SA	Ind-2001	d
viba_541	OMN/7/2001	bovine	91.8	0	O	ME-SA	Ind-2001	b
viba_705	KUW/3/97	bovine	91.2	0	O	ME-SA	Ind-2001	a
viba_397	UAE/4/2008	gazelle	90.2	0	O	ME-SA	Ind-2001	c
viba_285	UKG/35/2001	porcine	89.3	0	O	ME-SA	PanAsia	
viba_766	IRN/31/2009	cattle	88.9	0	O	ME-SA	PanAsia-2	FAR-09
viba_650	IRN/8/2005	ovine	88.8	0	O	ME-SA	PanAsia-2	
viba_666	IRN/18/2010	cattle	88.5	0	O	ME-SA	PanAsia-2	BAL-09
viba_719	IRN/88/2009		88.3	0	O	ME-SA	PanAsia-2	ANT-10

Virus sample name:	NEP/55/2021
Sender reference:	50 Np FMD
Location of origin:	Sarlahi
Country of origin:	Nepal
Date of collection:	05/05/2021
Host species:	bovine
Serotype:	O
Topotype:	ME-SA
Lineage:	Ind-2001
Sublineage:	e
Sequence length:	633
Ambiguities:	0
Material submitted for sequencing:	WRL-LFBK2
Harvest date of material:	23/10/2021
Primers:	O-1C244F/EUR-2B52R, FMD-3161F/FMD-4303R
Received for sequencing:	02/11/2021
Created:	12/11/2021
Last updated:	12/11/2021
VIBASys IDs: sample 49010, genome 49011, sequence viba_49012, sequencing info 49013	

Most Closely Related Sequences

sequence	virus name	Host	% Id.	# Ambig.	serotype	topotype	lineage	sublineage
viba_48920	NEP/15/2021	bovine	99.4	0	O	ME-SA	Ind-2001	e
viba_48924	NEP/19/2021	water buffalo	99.4	0	O	ME-SA	Ind-2001	e
viba_48968	NEP/31/2021	bovine	99.4	0	O	ME-SA	Ind-2001	e
viba_48956	NEP/28/2021	bovine	99.4	0	O	ME-SA	Ind-2001	e
viba_48964	NEP/30/2021	bovine	99.4	0	O	ME-SA	Ind-2001	e
viba_48984	NEP/35/2021	bovine	99.4	0	O	ME-SA	Ind-2001	e
viba_48960	NEP/29/2021	bovine	99.4	0	O	ME-SA	Ind-2001	e
viba_48928	NEP/20/2021	bovine	99.4	0	O	ME-SA	Ind-2001	e
viba_48972	NEP/32/2021	bovine	99.2	0	O	ME-SA	Ind-2001	e
viba_48948	NEP/26/2021	bovine	99.2	0	O	ME-SA	Ind-2001	e

Most Closely Related Prototype Sequences

see <http://www.wrlfmd.org/fmdv-genome/fmd-prototype-strains>

sequence	virus name	Host	% Id.	# Ambig.	serotype	topotype	lineage	sublineage
viba_30238	MUR/19/2016	cattle	96.2	0	O	ME-SA	Ind-2001	e
viba_293	BHU/3/2009	cattle	93.2	0	O	ME-SA	Ind-2001	d
viba_541	OMN/7/2001	bovine	91.6	0	O	ME-SA	Ind-2001	b
viba_705	KUW/3/97	bovine	91.3	0	O	ME-SA	Ind-2001	a
viba_397	UAE/4/2008	gazelle	90.4	0	O	ME-SA	Ind-2001	c
viba_285	UKG/35/2001	porcine	89.1	0	O	ME-SA	PanAsia	
viba_719	IRN/88/2009		88.8	0	O	ME-SA	PanAsia-2	ANT-10
viba_766	IRN/31/2009	cattle	88.8	0	O	ME-SA	PanAsia-2	FAR-09
viba_650	IRN/8/2005	ovine	88.6	0	O	ME-SA	PanAsia-2	
viba_666	IRN/18/2010	cattle	88.5	0	O	ME-SA	PanAsia-2	BAL-09

Virus sample name:	NEP/56/2021
Sender reference:	51 Np FMD
Location of origin:	Rupendehi
Country of origin:	Nepal
Date of collection:	10/08/2021
Host species:	bovine
Serotype:	O
Topotype:	ME-SA
Lineage:	Ind-2001
Sublineage:	e
Sequence length:	633
Ambiguities:	0
Material submitted for sequencing:	WRL-LFBK2
Harvest date of material:	21/10/2021
Primers:	O-1C244F/EUR-2B52R, FMD-3161F/FMD-4303R
Received for sequencing:	02/11/2021
Created:	12/11/2021
Last updated:	12/11/2021
VIBASys IDs: sample 49014, genome 49015, sequence viba_49016, sequencing info 49017	

Most Closely Related Sequences

sequence	virus name	Host	% Id.	# Ambig.	serotype	topotype	lineage	sublineage
viba_48888	NEP/4/2021	bovine	99.7	0	O	ME-SA	Ind-2001	e
viba_48972	NEP/32/2021	bovine	99.5	0	O	ME-SA	Ind-2001	e
viba_48884	NEP/14/2020	water buffalo	99.5	0	O	ME-SA	Ind-2001	e
viba_48872	NEP/11/2020	bovine	99.5	0	O	ME-SA	Ind-2001	e
viba_49008	NEP/44/2021	bovine	99.5	0	O	ME-SA	Ind-2001	e
viba_48876	NEP/12/2020	bovine	99.5	0	O	ME-SA	Ind-2001	e
viba_49004	NEP/43/2021	bovine	99.5	0	O	ME-SA	Ind-2001	e
viba_48936	NEP/23/2021	bovine	99.5	0	O	ME-SA	Ind-2001	e
viba_48880	NEP/13/2020	bovine	99.5	0	O	ME-SA	Ind-2001	e
viba_48868	NEP/10/2020	bovine	99.5	0	O	ME-SA	Ind-2001	e

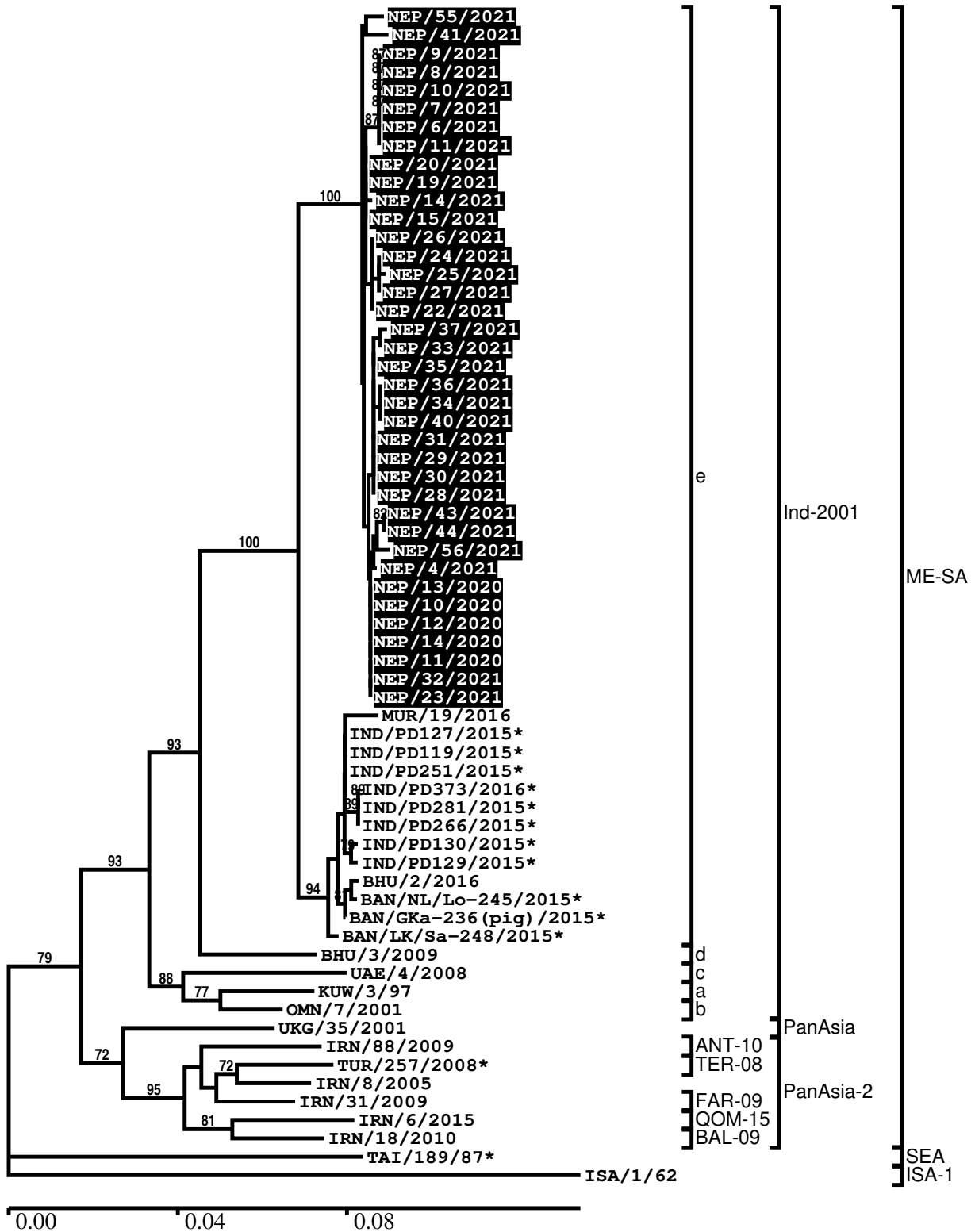
Most Closely Related Prototype Sequences

see <http://www.wrlfmd.org/fmdv-genome/fmd-prototype-strains>

sequence	virus name	Host	% Id.	# Ambig.	serotype	topotype	lineage	sublineage
viba_30238	MUR/19/2016	cattle	96.2	0	O	ME-SA	Ind-2001	e
viba_293	BHU/3/2009	cattle	92.9	0	O	ME-SA	Ind-2001	d
viba_541	OMN/7/2001	bovine	92.0	0	O	ME-SA	Ind-2001	b
viba_705	KUW/3/97	bovine	91.3	0	O	ME-SA	Ind-2001	a
viba_397	UAE/4/2008	gazelle	90.2	0	O	ME-SA	Ind-2001	c
viba_285	UKG/35/2001	porcine	89.4	0	O	ME-SA	PanAsia	
viba_766	IRN/31/2009	cattle	89.1	0	O	ME-SA	PanAsia-2	FAR-09
viba_650	IRN/8/2005	ovine	89.0	0	O	ME-SA	PanAsia-2	
viba_491	TUR/257/2008		88.8	0	O	ME-SA	PanAsia-2	TER-08
viba_666	IRN/18/2010	cattle	88.6	0	O	ME-SA	PanAsia-2	BAL-09

Report on FMDV O in Nepal in 2020, 2021

Batch: WRLFMD/2021/00013



*, not a WRLFMD Reference Number

Analysis Parameters

VP1 subsequence extractor:	vp1_O
Query sequence set:	WRLFMD/2021/00013-Nepal-O (38 sequences)
Sequence database set:	allseqs_O (5357 sequences)
Prototype sequence set:	!prototypes_O (49 sequences)
Number of related sequences reported:	10
Minimal VP1 subsequence match length	600
Sequence alignment method:	muscle (default parameters)
Sequence alignment length:	636
Phylogeny reconstruction method:	fdnadist, fneighbor
Number of bootstrap samples:	1000
Random seed for bootstrapping:	1
Displaying bootstrap values above:	70.0%
Number of sequences in tree capped at:	100
Number of prototype sequences in tree:	12
VIBASys version:	reflabs-1.1.2

Sequences in the Phylogenetic Tree

All sequences in the tree are in taxonomic group FMDV/O

label	accession	host(s)	lab	country	taxonomic information
NEP/55/2021	n/a	bovine	WRLFMD	Nepal	ME-SA/Ind-2001/e
NEP/41/2021	n/a	bovine	WRLFMD	Nepal	ME-SA/Ind-2001/e
NEP/9/2021	n/a	bovine	WRLFMD	Nepal	ME-SA/Ind-2001/e
NEP/8/2021	n/a	bovine	WRLFMD	Nepal	ME-SA/Ind-2001/e
NEP/10/2021	n/a	bovine	WRLFMD	Nepal	ME-SA/Ind-2001/e
NEP/7/2021	n/a	bovine	WRLFMD	Nepal	ME-SA/Ind-2001/e
NEP/6/2021	n/a	bovine	WRLFMD	Nepal	ME-SA/Ind-2001/e
NEP/11/2021	n/a	bovine	WRLFMD	Nepal	ME-SA/Ind-2001/e
NEP/20/2021	n/a	bovine	WRLFMD	Nepal	ME-SA/Ind-2001/e
NEP/19/2021	n/a	water buffalo	WRLFMD	Nepal	ME-SA/Ind-2001/e
NEP/14/2021	n/a	bovine	WRLFMD	Nepal	ME-SA/Ind-2001/e
NEP/15/2021	n/a	bovine	WRLFMD	Nepal	ME-SA/Ind-2001/e
NEP/26/2021	n/a	bovine	WRLFMD	Nepal	ME-SA/Ind-2001/e
NEP/24/2021	n/a	bovine	WRLFMD	Nepal	ME-SA/Ind-2001/e
NEP/25/2021	n/a	bovine	WRLFMD	Nepal	ME-SA/Ind-2001/e
NEP/27/2021	n/a	bovine	WRLFMD	Nepal	ME-SA/Ind-2001/e
NEP/22/2021	n/a	bovine	WRLFMD	Nepal	ME-SA/Ind-2001/e
NEP/37/2021	n/a	bovine	WRLFMD	Nepal	ME-SA/Ind-2001/e
NEP/33/2021	n/a	bovine	WRLFMD	Nepal	ME-SA/Ind-2001/e
NEP/35/2021	n/a	bovine	WRLFMD	Nepal	ME-SA/Ind-2001/e
NEP/36/2021	n/a	bovine	WRLFMD	Nepal	ME-SA/Ind-2001/e
NEP/34/2021	n/a	bovine	WRLFMD	Nepal	ME-SA/Ind-2001/e
NEP/40/2021	n/a	bovine	WRLFMD	Nepal	ME-SA/Ind-2001/e
NEP/31/2021	n/a	bovine	WRLFMD	Nepal	ME-SA/Ind-2001/e
NEP/29/2021	n/a	bovine	WRLFMD	Nepal	ME-SA/Ind-2001/e
NEP/30/2021	n/a	bovine	WRLFMD	Nepal	ME-SA/Ind-2001/e
NEP/28/2021	n/a	bovine	WRLFMD	Nepal	ME-SA/Ind-2001/e
NEP/43/2021	n/a	bovine	WRLFMD	Nepal	ME-SA/Ind-2001/e
NEP/44/2021	n/a	bovine	WRLFMD	Nepal	ME-SA/Ind-2001/e
NEP/56/2021	n/a	bovine	WRLFMD	Nepal	ME-SA/Ind-2001/e
NEP/4/2021	n/a	bovine	WRLFMD	Nepal	ME-SA/Ind-2001/e
NEP/13/2020	n/a	bovine	WRLFMD	Nepal	ME-SA/Ind-2001/e
NEP/10/2020	n/a	bovine	WRLFMD	Nepal	ME-SA/Ind-2001/e
NEP/12/2020	n/a	bovine	WRLFMD	Nepal	ME-SA/Ind-2001/e
NEP/14/2020	n/a	water buffalo	WRLFMD	Nepal	ME-SA/Ind-2001/e
NEP/11/2020	n/a	bovine	WRLFMD	Nepal	ME-SA/Ind-2001/e

continued on next page

label	accession	host(s)	lab	country	taxonomic information
NEP/32/2021	n/a	bovine	WRLFMD	Nepal	ME-SA/Ind-2001/e
NEP/23/2021	n/a	bovine	WRLFMD	Nepal	ME-SA/Ind-2001/e
MUR/19/2016	MG972510	cattle	WRLFMD	Mauritius	ME-SA/Ind-2001/e
IND/PD127/2015*	MT909627	cattle	PD-FMD	India	ME-SA/Ind-2001/e
IND/PD119/2015*	MT909624	cattle	PD-FMD	India	ME-SA/Ind-2001/e
IND/PD251/2015*	MT909652	cattle	PD-FMD	India	ME-SA/Ind-2001/e
IND/PD373/2016*	MT909702	cattle	PD-FMD	India	ME-SA/Ind-2001/e
IND/PD281/2015*	MT909658	cattle	PD-FMD	India	ME-SA/Ind-2001/e
IND/PD266/2015*	MT909655	cattle	PD-FMD	India	ME-SA/Ind-2001/e
IND/PD130/2015*	MT909629	cattle	PD-FMD	India	ME-SA/Ind-2001/e
IND/PD129/2015*	MT909628	cattle	PD-FMD	India	ME-SA/Ind-2001/e
BHU/2/2016	MG972480	cattle	WRLFMD	Bhutan	ME-SA/Ind-2001/e
BAN/NL/Lo-245/2015*	KY077611	cattle	Univ Dhaka	Bangladesh	ME-SA/Ind-2001/e
BAN/GKa-236(pig)/2015*	KX712091	porcine	Univ Dhaka	Bangladesh	ME-SA/Ind-2001/e
BAN/LK/Sa-248/2015*	KY077612	cattle	Univ Dhaka	Bangladesh	ME-SA/Ind-2001/e
BHU/3/2009	KM921814	cattle	WRLFMD	Bhutan	ME-SA/Ind-2001/d
UAE/4/2008	KM921876	gazelle	WRLFMD	United Arab Emirates	ME-SA/Ind-2001/c
KUW/3/97	DQ164904	bovine	WRLFMD	Kuwait	ME-SA/Ind-2001/a
OMN/7/2001	DQ164941	bovine	WRLFMD	Oman	ME-SA/Ind-2001/b
UKG/35/2001	AJ539141	porcine	PIADC	United Kingdom	ME-SA/PanAsia
IRN/88/2009	KY091282	n/a	WRLFMD	Iran	ME-SA/PanAsia-2/ANT-10
TUR/257/2008*	n/a	n/a	FMDI-Ankara	Turkey	ME-SA/PanAsia-2/TER-08
IRN/8/2005	KY091281	ovine	WRLFMD	Iran	ME-SA/PanAsia-2
IRN/31/2009	KY091284	cattle	WRLFMD	Iran	ME-SA/PanAsia-2/FAR-09
IRN/6/2015	MN276044	cattle	WRLFMD	Iran	ME-SA/PanAsia-2/QOM-15
IRN/18/2010	KY091283	cattle	WRLFMD	Iran	ME-SA/PanAsia-2/BAL-09
TAI/189/87*	KY091288	bovine	TRRL	Thailand	SEA
ISA/1/62	AJ303500	n/a	WRLFMD	Indonesia	ISA-1

*, not a WRLFMD Reference Number

n/a, not available