

FAO World Reference Laboratory for Foot-and-Mouth Disease (WRLFMD)

Genotyping Report

FMDV serotype: O
Country: Malaysia
Year: 2020, 2021
Batch: WRLMEG/2021/00009
No. of sequences: 32
Report date: 8th June 2021
Report generated by: Nick Knowles
Report checked by: Jemma Wadsworth

This report has been prepared on behalf of the Malaysian National Foot-and-Mouth Disease Laboratory (MNFMDL) and covers VP1 sequences submitted to the WRLFMD on 10/05/2021.



Copyright © 2021 The Pirbright Institute, Ash Road, Pirbright, Woking GU24 0NF, United Kingdom.

www: <http://www.wrlfmd.org/>

email: reporting@pirbright.ac.uk

The contents of this report should not be reproduced without permission.

Virus sample name:	MAY/7/2020(2)
Sender reference:	7/2020(2)
Location of origin:	Jln Lintang, Kg Pianggu, Rompin, Pahang
Country of origin:	Malaysia
Date of collection:	03/01/2020
Host species:	cattle
Serotype:	O
Topotype:	ME-SA
Lineage:	Ind-2001
Sublineage:	e
Sequence length:	633
Ambiguities:	0
Material submitted for sequencing:	n/a
Harvest date of material:	n/a
Primers:	n/a
Received for sequencing:	n/a
Created:	07/06/2021
Last updated:	07/06/2021
VIBASys IDs: sample 47987, genome 47988, sequence viba_47989, sequencing info 47990	

Most Closely Related Sequences

sequence	virus name	Host	% Id.	# Ambig.	serotype	topotype	lineage	sublineage
viba_48021	MAY/211/2020	cattle	100.0	0	O	ME-SA	Ind-2001	e
viba_48029	MAY/781/2020	cattle	99.8	0	O	ME-SA	Ind-2001	e
viba_48025	MAY/430/2020	cattle	99.7	0	O	ME-SA	Ind-2001	e
viba_48001	MAY/45/2020	cattle	99.5	0	O	ME-SA	Ind-2001	e
viba_47295	LAO/4/2020	cattle	99.5	0	O	ME-SA	Ind-2001	e
viba_45022	VIT/7/2020	porcine	99.5	0	O	ME-SA	Ind-2001	e
viba_48005	MAY/35/2020(2)	cattle	99.5	0	O	ME-SA	Ind-2001	e
viba_44983	VIT/27/2019	cattle	99.5	0	O	ME-SA	Ind-2001	e
viba_44979	VIT/25/2019	porcine	99.5	0	O	ME-SA	Ind-2001	e
viba_47316	TAI/4/2020	cattle	99.5	0	O	ME-SA	Ind-2001	e

Most Closely Related Prototype Sequences

see <http://www.wrlfmd.org/fmdv-genome/fmd-prototype-strains>

sequence	virus name	Host	% Id.	# Ambig.	serotype	topotype	lineage	sublineage
viba_30238	MUR/19/2016	cattle	95.9	0	O	ME-SA	Ind-2001	e
viba_293	BHU/3/2009	cattle	93.5	0	O	ME-SA	Ind-2001	d
viba_541	OMN/7/2001	bovine	91.0	0	O	ME-SA	Ind-2001	b
viba_705	KUW/3/97	bovine	90.4	0	O	ME-SA	Ind-2001	a
viba_397	UAE/4/2008	gazelle	89.4	0	O	ME-SA	Ind-2001	c
viba_650	IRN/8/2005	ovine	88.0	0	O	ME-SA	PanAsia-2	
viba_766	IRN/31/2009	cattle	88.0	0	O	ME-SA	PanAsia-2	FAR-09
viba_719	IRN/88/2009		87.8	0	O	ME-SA	PanAsia-2	ANT-10
viba_285	UKG/35/2001	porcine	87.7	0	O	ME-SA	PanAsia	
viba_359	Manisa/TUR/69		87.5	0	O	ME-SA		

Virus sample name:	MAY/35/2020(2)
Sender reference:	35/2020(2)
Location of origin:	Gunong, Bachok, Kelantan
Country of origin:	Malaysia
Date of collection:	07/01/2020
Host species:	cattle
Serotype:	O
Topotype:	ME-SA
Lineage:	Ind-2001
Sublineage:	e
Sequence length:	633
Ambiguities:	0
Material submitted for sequencing:	n/a
Harvest date of material:	n/a
Primers:	n/a
Received for sequencing:	n/a
Created:	07/06/2021
Last updated:	07/06/2021
VIBASys IDs: sample 48003, genome 48004, sequence viba_48005, sequencing info 48006	

Most Closely Related Sequences

sequence	virus name	Host	% Id.	# Ambig.	serotype	topotype	lineage	sublineage
viba_47295	LAO/4/2020	cattle	100.0	0	O	ME-SA	Ind-2001	e
viba_45022	VIT/7/2020	porcine	100.0	0	O	ME-SA	Ind-2001	e
viba_44983	VIT/27/2019	cattle	100.0	0	O	ME-SA	Ind-2001	e
viba_44979	VIT/25/2019	porcine	100.0	0	O	ME-SA	Ind-2001	e
viba_47316	TAI/4/2020	cattle	100.0	0	O	ME-SA	Ind-2001	e
viba_47287	LAO/2/2020	cattle	100.0	0	O	ME-SA	Ind-2001	e
viba_44987	VIT/28/2019	water buffalo	100.0	0	O	ME-SA	Ind-2001	e
viba_47299	LAO/5/2020	cattle	100.0	0	O	ME-SA	Ind-2001	e
viba_44967	VIT/17/2019	porcine	100.0	0	O	ME-SA	Ind-2001	e
viba_47291	LAO/3/2020	cattle	100.0	0	O	ME-SA	Ind-2001	e

Most Closely Related Prototype Sequences

see <http://www.wrlfmd.org/fmdv-genome/fmd-prototype-strains>

sequence	virus name	Host	% Id.	# Ambig.	serotype	topotype	lineage	sublineage
viba_30238	MUR/19/2016	cattle	96.1	0	O	ME-SA	Ind-2001	e
viba_293	BHU/3/2009	cattle	94.0	0	O	ME-SA	Ind-2001	d
viba_541	OMN/7/2001	bovine	91.2	0	O	ME-SA	Ind-2001	b
viba_705	KUW/3/97	bovine	90.9	0	O	ME-SA	Ind-2001	a
viba_397	UAE/4/2008	gazelle	89.9	0	O	ME-SA	Ind-2001	c
viba_766	IRN/31/2009	cattle	88.5	0	O	ME-SA	PanAsia-2	FAR-09
viba_285	UKG/35/2001	porcine	88.2	0	O	ME-SA	PanAsia	
viba_719	IRN/88/2009	cattle	88.0	0	O	ME-SA	PanAsia-2	ANT-10
viba_650	IRN/8/2005	ovine	87.9	0	O	ME-SA	PanAsia-2	
viba_359	Manisa/TUR/69	cattle	87.4	0	O	ME-SA		

Virus sample name:	MAY/176/2020(3)
Sender reference:	176/2020(3)
Location of origin:	No. 2273, Bagan Buaya, Nibong Tebal, Pulau Pinang
Country of origin:	Malaysia
Date of collection:	23/01/2020
Host species:	cattle
Serotype:	O
Topotype:	ME-SA
Lineage:	Ind-2001
Sublineage:	e
Sequence length:	633
Ambiguities:	0
Material submitted for sequencing:	n/a
Harvest date of material:	n/a
Primers:	n/a
Received for sequencing:	n/a
Created:	07/06/2021
Last updated:	07/06/2021
VIBASys IDs: sample 48015, genome 48016, sequence viba_48017, sequencing info 48018	

Most Closely Related Sequences

sequence	virus name	Host	% Id.	# Ambig.	serotype	topotype	lineage	sublineage
viba_44991	VIT/29/2019	water buffalo	99.5	0	O	ME-SA	Ind-2001	e
viba_47295	LAO/4/2020	cattle	99.5	0	O	ME-SA	Ind-2001	e
viba_45022	VIT/7/2020	porcine	99.5	0	O	ME-SA	Ind-2001	e
viba_48005	MAY/35/2020(2)	cattle	99.5	0	O	ME-SA	Ind-2001	e
viba_44983	VIT/27/2019	cattle	99.5	0	O	ME-SA	Ind-2001	e
viba_44979	VIT/25/2019	porcine	99.5	0	O	ME-SA	Ind-2001	e
viba_47316	TAI/4/2020	cattle	99.5	0	O	ME-SA	Ind-2001	e
viba_47287	LAO/2/2020	cattle	99.5	0	O	ME-SA	Ind-2001	e
viba_44987	VIT/28/2019	water buffalo	99.5	0	O	ME-SA	Ind-2001	e
viba_47299	LAO/5/2020	cattle	99.5	0	O	ME-SA	Ind-2001	e

Most Closely Related Prototype Sequences

see <http://www.wrlfmd.org/fmdv-genome/fmd-prototype-strains>

sequence	virus name	Host	% Id.	# Ambig.	serotype	topotype	lineage	sublineage
viba_30238	MUR/19/2016	cattle	95.6	0	O	ME-SA	Ind-2001	e
viba_293	BHU/3/2009	cattle	93.5	0	O	ME-SA	Ind-2001	d
viba_541	OMN/7/2001	bovine	91.0	0	O	ME-SA	Ind-2001	b
viba_705	KUW/3/97	bovine	90.7	0	O	ME-SA	Ind-2001	a
viba_397	UAE/4/2008	gazelle	89.7	0	O	ME-SA	Ind-2001	c
viba_766	IRN/31/2009	cattle	88.3	0	O	ME-SA	PanAsia-2	FAR-09
viba_285	UKG/35/2001	porcine	88.0	0	O	ME-SA	PanAsia	
viba_719	IRN/88/2009		87.8	0	O	ME-SA	PanAsia-2	ANT-10
viba_650	IRN/8/2005	ovine	87.7	0	O	ME-SA	PanAsia-2	
viba_860	IRN/6/2015	cattle	87.2	0	O	ME-SA	PanAsia-2	QOM-15

Virus sample name:	MAY/3041/2020(1)
Sender reference:	3041/2020(1)
Location of origin:	No 470 Kg. Bukit Goh Kuantan, Pahang
Country of origin:	Malaysia
Date of collection:	24/09/2020
Host species:	cattle
Serotype:	O
Topotype:	ME-SA
Lineage:	Ind-2001
Sublineage:	e
Sequence length:	633
Ambiguities:	0
Material submitted for sequencing:	n/a
Harvest date of material:	n/a
Primers:	n/a
Received for sequencing:	n/a
Created:	07/06/2021
Last updated:	07/06/2021
VIBASys IDs: sample 48039, genome 48040, sequence viba_48041, sequencing info 48042	

Most Closely Related Sequences

sequence	virus name	Host	% Id.	# Ambig.	serotype	topotype	lineage	sublineage
viba_48037	MAY/2081/2020	cattle	100.0	0	O	ME-SA	Ind-2001	e
viba_48073	MAY/4050/2020(2)	cattle	100.0	0	O	ME-SA	Ind-2001	e
viba_48045	MAY/3245/2020(2)	cattle	100.0	0	O	ME-SA	Ind-2001	e
viba_48069	MAY/3933/2020(3)	cattle	100.0	0	O	ME-SA	Ind-2001	e
viba_48085	MAY/4302/2020(1)	cattle	100.0	0	O	ME-SA	Ind-2001	e
viba_48053	MAY/3455/2020	cattle	99.8	0	O	ME-SA	Ind-2001	e
viba_48065	MAY/3966/2020	cattle	99.8	0	O	ME-SA	Ind-2001	e
viba_48057	MAY/3696/2020(1)	cattle	99.8	0	O	ME-SA	Ind-2001	e
viba_48089	MAY/4390/2020	cattle	99.8	0	O	ME-SA	Ind-2001	e
viba_48101	MAY/4425/2020	cattle	99.7	0	O	ME-SA	Ind-2001	e

Most Closely Related Prototype Sequences

see <http://www.wrlfmd.org/fmdv-genome/fmd-prototype-strains>

sequence	virus name	Host	% Id.	# Ambig.	serotype	topotype	lineage	sublineage
viba_30238	MUR/19/2016	cattle	95.7	0	O	ME-SA	Ind-2001	e
viba_293	BHU/3/2009	cattle	93.8	0	O	ME-SA	Ind-2001	d
viba_541	OMN/7/2001	bovine	91.0	0	O	ME-SA	Ind-2001	b
viba_705	KUW/3/97	bovine	90.7	0	O	ME-SA	Ind-2001	a
viba_397	UAE/4/2008	gazelle	89.9	0	O	ME-SA	Ind-2001	c
viba_766	IRN/31/2009	cattle	88.3	0	O	ME-SA	PanAsia-2	FAR-09
viba_285	UKG/35/2001	porcine	87.9	0	O	ME-SA	PanAsia	
viba_650	IRN/8/2005	ovine	87.7	0	O	ME-SA	PanAsia-2	
viba_719	IRN/88/2009		87.5	0	O	ME-SA	PanAsia-2	ANT-10
viba_359	Manisa/TUR/69		87.2	0	O	ME-SA		

Virus sample name:	MAY/3245/2020(2)
Sender reference:	3245/2020(2)
Location of origin:	Pos 7, Jalan Abdul Rahman Semerah Muar, Seri Menanti/Sg Balang, Muar Johor
Country of origin:	Malaysia
Date of collection:	29/09/2020
Host species:	cattle
Serotype:	O
Topotype:	ME-SA
Lineage:	Ind-2001
Sublineage:	e
Sequence length:	633
Ambiguities:	0
Material submitted for sequencing:	n/a
Harvest date of material:	n/a
Primers:	n/a
Received for sequencing:	n/a
Created:	07/06/2021
Last updated:	07/06/2021
VIBASys IDs: sample 48043, genome 48044, sequence viba_48045, sequencing info 48046	

Most Closely Related Sequences

sequence	virus name	Host	% Id.	# Ambig.	serotype	topotype	lineage	sublineage
viba_48037	MAY/2081/2020	cattle	100.0	0	O	ME-SA	Ind-2001	e
viba_48073	MAY/4050/2020(2)	cattle	100.0	0	O	ME-SA	Ind-2001	e
viba_48069	MAY/3933/2020(3)	cattle	100.0	0	O	ME-SA	Ind-2001	e
viba_48041	MAY/3041/2020(1)	cattle	100.0	0	O	ME-SA	Ind-2001	e
viba_48085	MAY/4302/2020(1)	cattle	100.0	0	O	ME-SA	Ind-2001	e
viba_48053	MAY/3455/2020	cattle	99.8	0	O	ME-SA	Ind-2001	e
viba_48065	MAY/3966/2020	cattle	99.8	0	O	ME-SA	Ind-2001	e
viba_48057	MAY/3696/2020(1)	cattle	99.8	0	O	ME-SA	Ind-2001	e
viba_48089	MAY/4390/2020	cattle	99.8	0	O	ME-SA	Ind-2001	e
viba_48101	MAY/4425/2020	cattle	99.7	0	O	ME-SA	Ind-2001	e

Most Closely Related Prototype Sequences

see <http://www.wrlfmd.org/fmdv-genome/fmd-prototype-strains>

sequence	virus name	Host	% Id.	# Ambig.	serotype	topotype	lineage	sublineage
viba_30238	MUR/19/2016	cattle	95.7	0	O	ME-SA	Ind-2001	e
viba_293	BHU/3/2009	cattle	93.8	0	O	ME-SA	Ind-2001	d
viba_541	OMN/7/2001	bovine	91.0	0	O	ME-SA	Ind-2001	b
viba_705	KUW/3/97	bovine	90.7	0	O	ME-SA	Ind-2001	a
viba_397	UAE/4/2008	gazelle	89.9	0	O	ME-SA	Ind-2001	c
viba_766	IRN/31/2009	cattle	88.3	0	O	ME-SA	PanAsia-2	FAR-09
viba_285	UKG/35/2001	porcine	87.9	0	O	ME-SA	PanAsia	
viba_650	IRN/8/2005	ovine	87.7	0	O	ME-SA	PanAsia-2	
viba_719	IRN/88/2009		87.5	0	O	ME-SA	PanAsia-2	ANT-10
viba_359	Manisa/TUR/69		87.2	0	O	ME-SA		

Virus sample name:	MAY/3457/2020(5)
Sender reference:	3457/2020(5)
Location of origin:	K-23, Felda Kg. Awah, 28030 Temerloh, Pahang
Country of origin:	Malaysia
Date of collection:	12/10/2020
Host species:	cattle
Serotype:	O
Topotype:	ME-SA
Lineage:	Ind-2001
Sublineage:	e
Sequence length:	633
Ambiguities:	0
Material submitted for sequencing:	n/a
Harvest date of material:	n/a
Primers:	n/a
Received for sequencing:	n/a
Created:	07/06/2021
Last updated:	07/06/2021

VIBASys IDs: sample 48047, genome 48048, sequence viba_48049, sequencing info 48050

Most Closely Related Sequences

sequence	virus name	Host	% Id.	# Ambig.	serotype	topotype	lineage	sublineage
viba_48117	MAY/946/2021	cattle	100.0	0	O	ME-SA	Ind-2001	e
viba_44991	VIT/29/2019	water buffalo	99.5	0	O	ME-SA	Ind-2001	e
viba_47340	TAI/10/2020	cattle	99.5	0	O	ME-SA	Ind-2001	e
viba_47295	LAO/4/2020	cattle	99.5	0	O	ME-SA	Ind-2001	e
viba_45022	VIT/7/2020	porcine	99.5	0	O	ME-SA	Ind-2001	e
viba_48005	MAY/35/2020(2)	cattle	99.5	0	O	ME-SA	Ind-2001	e
viba_44983	VIT/27/2019	cattle	99.5	0	O	ME-SA	Ind-2001	e
viba_44979	VIT/25/2019	porcine	99.5	0	O	ME-SA	Ind-2001	e
viba_47316	TAI/4/2020	cattle	99.5	0	O	ME-SA	Ind-2001	e
viba_44975	VIT/20/2019	water buffalo	99.5	0	O	ME-SA	Ind-2001	e

Most Closely Related Prototype Sequences

see <http://www.wrlfmd.org/fmdv-genome/fmd-prototype-strains>

sequence	virus name	Host	% Id.	# Ambig.	serotype	topotype	lineage	sublineage
viba_30238	MUR/19/2016	cattle	95.6	0	O	ME-SA	Ind-2001	e
viba_293	BHU/3/2009	cattle	93.5	0	O	ME-SA	Ind-2001	d
viba_541	OMN/7/2001	bovine	90.7	0	O	ME-SA	Ind-2001	b
viba_705	KUW/3/97	bovine	90.4	0	O	ME-SA	Ind-2001	a
viba_397	UAE/4/2008	gazelle	89.4	0	O	ME-SA	Ind-2001	c
viba_766	IRN/31/2009	cattle	88.3	0	O	ME-SA	PanAsia-2	FAR-09
viba_285	UKG/35/2001	porcine	88.0	0	O	ME-SA	PanAsia	
viba_719	IRN/88/2009	cattle	87.8	0	O	ME-SA	PanAsia-2	ANT-10
viba_650	IRN/8/2005	ovine	87.7	0	O	ME-SA	PanAsia-2	
viba_359	Manisa/TUR/69	cattle	87.5	0	O	ME-SA		

Virus sample name:	MAY/3696/2020(1)
Sender reference:	3696/2020(1)
Location of origin:	Kampung Bukit Lada, Kampung Awah 28100 Maran, Pahang
Country of origin:	Malaysia
Date of collection:	27/10/2020
Host species:	cattle
Serotype:	O
Topotype:	ME-SA
Lineage:	Ind-2001
Sublineage:	e
Sequence length:	633
Ambiguities:	0
Material submitted for sequencing:	n/a
Harvest date of material:	n/a
Primers:	n/a
Received for sequencing:	n/a
Created:	07/06/2021
Last updated:	07/06/2021
VIBASys IDs: sample 48055, genome 48056, sequence viba_48057, sequencing info 48058	

Most Closely Related Sequences

sequence	virus name	Host	% Id.	# Ambig.	serotype	topotype	lineage	sublineage
viba_48037	MAY/2081/2020	cattle	99.8	0	O	ME-SA	Ind-2001	e
viba_48073	MAY/4050/2020(2)	cattle	99.8	0	O	ME-SA	Ind-2001	e
viba_48045	MAY/3245/2020(2)	cattle	99.8	0	O	ME-SA	Ind-2001	e
viba_48069	MAY/3933/2020(3)	cattle	99.8	0	O	ME-SA	Ind-2001	e
viba_48041	MAY/3041/2020(1)	cattle	99.8	0	O	ME-SA	Ind-2001	e
viba_48085	MAY/4302/2020(1)	cattle	99.8	0	O	ME-SA	Ind-2001	e
viba_48053	MAY/3455/2020	cattle	99.7	0	O	ME-SA	Ind-2001	e
viba_48065	MAY/3966/2020	cattle	99.7	0	O	ME-SA	Ind-2001	e
viba_48089	MAY/4390/2020	cattle	99.7	0	O	ME-SA	Ind-2001	e
viba_48101	MAY/4425/2020	cattle	99.5	0	O	ME-SA	Ind-2001	e

Most Closely Related Prototype Sequences

see <http://www.wrlfmd.org/fmdv-genome/fmd-prototype-strains>

sequence	virus name	Host	% Id.	# Ambig.	serotype	topotype	lineage	sublineage
viba_30238	MUR/19/2016	cattle	95.6	0	O	ME-SA	Ind-2001	e
viba_293	BHU/3/2009	cattle	94.0	0	O	ME-SA	Ind-2001	d
viba_541	OMN/7/2001	bovine	91.2	0	O	ME-SA	Ind-2001	b
viba_705	KUW/3/97	bovine	90.9	0	O	ME-SA	Ind-2001	a
viba_397	UAE/4/2008	gazelle	90.1	0	O	ME-SA	Ind-2001	c
viba_766	IRN/31/2009	cattle	88.5	0	O	ME-SA	PanAsia-2	FAR-09
viba_285	UKG/35/2001	porcine	88.0	0	O	ME-SA	PanAsia	
viba_650	IRN/8/2005	ovine	87.9	0	O	ME-SA	PanAsia-2	
viba_719	IRN/88/2009		87.7	0	O	ME-SA	PanAsia-2	ANT-10
viba_359	Manisa/TUR/69		87.4	0	O	ME-SA		

Virus sample name:	MAY/3933/2020(3)
Sender reference:	3933/2020(3)
Location of origin:	No. 43, Tmn Selinsing, Mela, Cheka, 27200 Kuala Lipis, Pahang
Country of origin:	Malaysia
Date of collection:	17/11/2020
Host species:	cattle
Serotype:	O
Topotype:	ME-SA
Lineage:	Ind-2001
Sublineage:	e
Sequence length:	633
Ambiguities:	0
Material submitted for sequencing:	n/a
Harvest date of material:	n/a
Primers:	n/a
Received for sequencing:	n/a
Created:	07/06/2021
Last updated:	07/06/2021
VIBASys IDs: sample 48067, genome 48068, sequence viba_48069, sequencing info 48070	

Most Closely Related Sequences

sequence	virus name	Host	% Id.	# Ambig.	serotype	topotype	lineage	sublineage
viba_48037	MAY/2081/2020	cattle	100.0	0	O	ME-SA	Ind-2001	e
viba_48073	MAY/4050/2020(2)	cattle	100.0	0	O	ME-SA	Ind-2001	e
viba_48045	MAY/3245/2020(2)	cattle	100.0	0	O	ME-SA	Ind-2001	e
viba_48041	MAY/3041/2020(1)	cattle	100.0	0	O	ME-SA	Ind-2001	e
viba_48085	MAY/4302/2020(1)	cattle	100.0	0	O	ME-SA	Ind-2001	e
viba_48053	MAY/3455/2020	cattle	99.8	0	O	ME-SA	Ind-2001	e
viba_48065	MAY/3966/2020	cattle	99.8	0	O	ME-SA	Ind-2001	e
viba_48057	MAY/3696/2020(1)	cattle	99.8	0	O	ME-SA	Ind-2001	e
viba_48089	MAY/4390/2020	cattle	99.8	0	O	ME-SA	Ind-2001	e
viba_48101	MAY/4425/2020	cattle	99.7	0	O	ME-SA	Ind-2001	e

Most Closely Related Prototype Sequences

see <http://www.wrlfmd.org/fmdv-genome/fmd-prototype-strains>

sequence	virus name	Host	% Id.	# Ambig.	serotype	topotype	lineage	sublineage
viba_30238	MUR/19/2016	cattle	95.7	0	O	ME-SA	Ind-2001	e
viba_293	BHU/3/2009	cattle	93.8	0	O	ME-SA	Ind-2001	d
viba_541	OMN/7/2001	bovine	91.0	0	O	ME-SA	Ind-2001	b
viba_705	KUW/3/97	bovine	90.7	0	O	ME-SA	Ind-2001	a
viba_397	UAE/4/2008	gazelle	89.9	0	O	ME-SA	Ind-2001	c
viba_766	IRN/31/2009	cattle	88.3	0	O	ME-SA	PanAsia-2	FAR-09
viba_285	UKG/35/2001	porcine	87.9	0	O	ME-SA	PanAsia	
viba_650	IRN/8/2005	ovine	87.7	0	O	ME-SA	PanAsia-2	
viba_719	IRN/88/2009		87.5	0	O	ME-SA	PanAsia-2	ANT-10
viba_359	Manisa/TUR/69		87.2	0	O	ME-SA		

Virus sample name:	MAY/4050/2020(2)
Sender reference:	4050/2020(2)
Location of origin:	No. 43, Tmn Selinsing, Mela, Cheka, 27200 Kuala Lipis, Pahang
Country of origin:	Malaysia
Date of collection:	20/11/2020
Host species:	cattle
Serotype:	O
Topotype:	ME-SA
Lineage:	Ind-2001
Sublineage:	e
Sequence length:	633
Ambiguities:	0
Material submitted for sequencing:	n/a
Harvest date of material:	n/a
Primers:	n/a
Received for sequencing:	n/a
Created:	07/06/2021
Last updated:	07/06/2021
VIBASys IDs: sample 48071, genome 48072, sequence viba_48073, sequencing info 48074	

Most Closely Related Sequences

sequence	virus name	Host	% Id.	# Ambig.	serotype	topotype	lineage	sublineage
viba_48037	MAY/2081/2020	cattle	100.0	0	O	ME-SA	Ind-2001	e
viba_48045	MAY/3245/2020(2)	cattle	100.0	0	O	ME-SA	Ind-2001	e
viba_48069	MAY/3933/2020(3)	cattle	100.0	0	O	ME-SA	Ind-2001	e
viba_48041	MAY/3041/2020(1)	cattle	100.0	0	O	ME-SA	Ind-2001	e
viba_48085	MAY/4302/2020(1)	cattle	100.0	0	O	ME-SA	Ind-2001	e
viba_48053	MAY/3455/2020	cattle	99.8	0	O	ME-SA	Ind-2001	e
viba_48065	MAY/3966/2020	cattle	99.8	0	O	ME-SA	Ind-2001	e
viba_48057	MAY/3696/2020(1)	cattle	99.8	0	O	ME-SA	Ind-2001	e
viba_48089	MAY/4390/2020	cattle	99.8	0	O	ME-SA	Ind-2001	e
viba_48101	MAY/4425/2020	cattle	99.7	0	O	ME-SA	Ind-2001	e

Most Closely Related Prototype Sequences

see <http://www.wrlfmd.org/fmdv-genome/fmd-prototype-strains>

sequence	virus name	Host	% Id.	# Ambig.	serotype	topotype	lineage	sublineage
viba_30238	MUR/19/2016	cattle	95.7	0	O	ME-SA	Ind-2001	e
viba_293	BHU/3/2009	cattle	93.8	0	O	ME-SA	Ind-2001	d
viba_541	OMN/7/2001	bovine	91.0	0	O	ME-SA	Ind-2001	b
viba_705	KUW/3/97	bovine	90.7	0	O	ME-SA	Ind-2001	a
viba_397	UAE/4/2008	gazelle	89.9	0	O	ME-SA	Ind-2001	c
viba_766	IRN/31/2009	cattle	88.3	0	O	ME-SA	PanAsia-2	FAR-09
viba_285	UKG/35/2001	porcine	87.9	0	O	ME-SA	PanAsia	
viba_650	IRN/8/2005	ovine	87.7	0	O	ME-SA	PanAsia-2	
viba_719	IRN/88/2009		87.5	0	O	ME-SA	PanAsia-2	ANT-10
viba_359	Manisa/TUR/69		87.2	0	O	ME-SA		

Virus sample name:	MAY/4122/2020(1)
Sender reference:	4122/2020(1)
Location of origin:	Projek Tenusu, Rezab Haiwan, Kg. Lembah Jaya, Simpang Pelangai, Pahang
Country of origin:	Malaysia
Date of collection:	24/11/2020
Host species:	cattle
Serotype:	O
Topotype:	ME-SA
Lineage:	Ind-2001
Sublineage:	e
Sequence length:	633
Ambiguities:	0
Material submitted for sequencing:	n/a
Harvest date of material:	n/a
Primers:	n/a
Received for sequencing:	n/a
Created:	07/06/2021
Last updated:	07/06/2021
VIBASys IDs: sample 48075, genome 48076, sequence viba_48077, sequencing info 48078	

Most Closely Related Sequences

sequence	virus name	Host	% Id.	# Ambig.	serotype	topotype	lineage	sublineage
viba_48081	MAY/4123/2020(2)	cattle	100.0	0	O	ME-SA	Ind-2001	e
viba_48065	MAY/3966/2020	cattle	99.7	0	O	ME-SA	Ind-2001	e
viba_48037	MAY/2081/2020	cattle	99.5	0	O	ME-SA	Ind-2001	e
viba_48073	MAY/4050/2020(2)	cattle	99.5	0	O	ME-SA	Ind-2001	e
viba_48045	MAY/3245/2020(2)	cattle	99.5	0	O	ME-SA	Ind-2001	e
viba_48069	MAY/3933/2020(3)	cattle	99.5	0	O	ME-SA	Ind-2001	e
viba_48101	MAY/4425/2020	cattle	99.5	0	O	ME-SA	Ind-2001	e
viba_48041	MAY/3041/2020(1)	cattle	99.5	0	O	ME-SA	Ind-2001	e
viba_48085	MAY/4302/2020(1)	cattle	99.5	0	O	ME-SA	Ind-2001	e
viba_48053	MAY/3455/2020	cattle	99.4	0	O	ME-SA	Ind-2001	e

Most Closely Related Prototype Sequences

see <http://www.wrlfmd.org/fmdv-genome/fmd-prototype-strains>

sequence	virus name	Host	% Id.	# Ambig.	serotype	topotype	lineage	sublineage
viba_30238	MUR/19/2016	cattle	95.6	0	O	ME-SA	Ind-2001	e
viba_293	BHU/3/2009	cattle	93.4	0	O	ME-SA	Ind-2001	d
viba_541	OMN/7/2001	bovine	90.9	0	O	ME-SA	Ind-2001	b
viba_705	KUW/3/97	bovine	90.2	0	O	ME-SA	Ind-2001	a
viba_397	UAE/4/2008	gazelle	89.4	0	O	ME-SA	Ind-2001	c
viba_766	IRN/31/2009	cattle	87.8	0	O	ME-SA	PanAsia-2	FAR-09
viba_650	IRN/8/2005	ovine	87.5	0	O	ME-SA	PanAsia-2	
viba_285	UKG/35/2001	porcine	87.4	0	O	ME-SA	PanAsia	
viba_719	IRN/88/2009		87.0	0	O	ME-SA	PanAsia-2	ANT-10
viba_359	Manisa/TUR/69		87.0	0	O	ME-SA		

Virus sample name:	MAY/4123/2020(2)
Sender reference:	4123/2020(2)
Location of origin:	Projek Tenusu, Rezab Haiwan, Kg. Lembah Jaya, Simpang Pelangai, Pahang
Country of origin:	Malaysia
Date of collection:	24/11/2020
Host species:	cattle
Serotype:	O
Topotype:	ME-SA
Lineage:	Ind-2001
Sublineage:	e
Sequence length:	633
Ambiguities:	0
Material submitted for sequencing:	n/a
Harvest date of material:	n/a
Primers:	n/a
Received for sequencing:	n/a
Created:	07/06/2021
Last updated:	07/06/2021
VIBASys IDs: sample 48079, genome 48080, sequence viba_48081, sequencing info 48082	

Most Closely Related Sequences

sequence	virus name	Host	% Id.	# Ambig.	serotype	topotype	lineage	sublineage
viba_48077	MAY/4122/2020(1)	cattle	100.0	0	O	ME-SA	Ind-2001	e
viba_48065	MAY/3966/2020	cattle	99.7	0	O	ME-SA	Ind-2001	e
viba_48037	MAY/2081/2020	cattle	99.5	0	O	ME-SA	Ind-2001	e
viba_48073	MAY/4050/2020(2)	cattle	99.5	0	O	ME-SA	Ind-2001	e
viba_48045	MAY/3245/2020(2)	cattle	99.5	0	O	ME-SA	Ind-2001	e
viba_48069	MAY/3933/2020(3)	cattle	99.5	0	O	ME-SA	Ind-2001	e
viba_48101	MAY/4425/2020	cattle	99.5	0	O	ME-SA	Ind-2001	e
viba_48041	MAY/3041/2020(1)	cattle	99.5	0	O	ME-SA	Ind-2001	e
viba_48085	MAY/4302/2020(1)	cattle	99.5	0	O	ME-SA	Ind-2001	e
viba_48053	MAY/3455/2020	cattle	99.4	0	O	ME-SA	Ind-2001	e

Most Closely Related Prototype Sequences

see <http://www.wrlfmd.org/fmdv-genome/fmd-prototype-strains>

sequence	virus name	Host	% Id.	# Ambig.	serotype	topotype	lineage	sublineage
viba_30238	MUR/19/2016	cattle	95.6	0	O	ME-SA	Ind-2001	e
viba_293	BHU/3/2009	cattle	93.4	0	O	ME-SA	Ind-2001	d
viba_541	OMN/7/2001	bovine	90.9	0	O	ME-SA	Ind-2001	b
viba_705	KUW/3/97	bovine	90.2	0	O	ME-SA	Ind-2001	a
viba_397	UAE/4/2008	gazelle	89.4	0	O	ME-SA	Ind-2001	c
viba_766	IRN/31/2009	cattle	87.8	0	O	ME-SA	PanAsia-2	FAR-09
viba_650	IRN/8/2005	ovine	87.5	0	O	ME-SA	PanAsia-2	
viba_285	UKG/35/2001	porcine	87.4	0	O	ME-SA	PanAsia	
viba_719	IRN/88/2009		87.0	0	O	ME-SA	PanAsia-2	ANT-10
viba_359	Manisa/TUR/69		87.0	0	O	ME-SA		

Virus sample name:	MAY/4302/2020(1)
Sender reference:	4302/2020(1)
Location of origin:	No 65 Jalan Damai 5, Sri Damai Jalan Gambang, Pahang
Country of origin:	Malaysia
Date of collection:	15/12/2020
Host species:	cattle
Serotype:	O
Topotype:	ME-SA
Lineage:	Ind-2001
Sublineage:	e
Sequence length:	633
Ambiguities:	0
Material submitted for sequencing:	n/a
Harvest date of material:	n/a
Primers:	n/a
Received for sequencing:	n/a
Created:	07/06/2021
Last updated:	07/06/2021

VIBASys IDs: sample 48083, genome 48084, sequence viba_48085, sequencing info 48086

Most Closely Related Sequences

sequence	virus name	Host	% Id.	# Ambig.	serotype	topotype	lineage	sublineage
viba_48037	MAY/2081/2020	cattle	100.0	0	O	ME-SA	Ind-2001	e
viba_48073	MAY/4050/2020(2)	cattle	100.0	0	O	ME-SA	Ind-2001	e
viba_48045	MAY/3245/2020(2)	cattle	100.0	0	O	ME-SA	Ind-2001	e
viba_48069	MAY/3933/2020(3)	cattle	100.0	0	O	ME-SA	Ind-2001	e
viba_48041	MAY/3041/2020(1)	cattle	100.0	0	O	ME-SA	Ind-2001	e
viba_48053	MAY/3455/2020	cattle	99.8	0	O	ME-SA	Ind-2001	e
viba_48065	MAY/3966/2020	cattle	99.8	0	O	ME-SA	Ind-2001	e
viba_48057	MAY/3696/2020(1)	cattle	99.8	0	O	ME-SA	Ind-2001	e
viba_48089	MAY/4390/2020	cattle	99.8	0	O	ME-SA	Ind-2001	e
viba_48101	MAY/4425/2020	cattle	99.7	0	O	ME-SA	Ind-2001	e

Most Closely Related Prototype Sequences

see <http://www.wrlfmd.org/fmdv-genome/fmd-prototype-strains>

sequence	virus name	Host	% Id.	# Ambig.	serotype	topotype	lineage	sublineage
viba_30238	MUR/19/2016	cattle	95.7	0	O	ME-SA	Ind-2001	e
viba_293	BHU/3/2009	cattle	93.8	0	O	ME-SA	Ind-2001	d
viba_541	OMN/7/2001	bovine	91.0	0	O	ME-SA	Ind-2001	b
viba_705	KUW/3/97	bovine	90.7	0	O	ME-SA	Ind-2001	a
viba_397	UAE/4/2008	gazelle	89.9	0	O	ME-SA	Ind-2001	c
viba_766	IRN/31/2009	cattle	88.3	0	O	ME-SA	PanAsia-2	FAR-09
viba_285	UKG/35/2001	porcine	87.9	0	O	ME-SA	PanAsia	
viba_650	IRN/8/2005	ovine	87.7	0	O	ME-SA	PanAsia-2	
viba_719	IRN/88/2009		87.5	0	O	ME-SA	PanAsia-2	ANT-10
viba_359	Manisa/TUR/69		87.2	0	O	ME-SA		

Virus sample name:	MAY/4266/2020(2)
Sender reference:	4266/2020(2)
Location of origin:	No 66 Kg Permatang Siput, Pahang
Country of origin:	Malaysia
Date of collection:	17/12/2020
Host species:	cattle
Serotype:	O
Topotype:	ME-SA
Lineage:	Ind-2001
Sublineage:	e
Sequence length:	633
Ambiguities:	0
Material submitted for sequencing:	n/a
Harvest date of material:	n/a
Primers:	n/a
Received for sequencing:	n/a
Created:	07/06/2021
Last updated:	07/06/2021
VIBASys IDs: sample 48091, genome 48092, sequence viba_48093, sequencing info 48094	

Most Closely Related Sequences

sequence	virus name	Host	% Id.	# Ambig.	serotype	topotype	lineage	sublineage
viba_47295	LAO/4/2020	cattle	98.9	0	O	ME-SA	Ind-2001	e
viba_45022	VIT/7/2020	porcine	98.9	0	O	ME-SA	Ind-2001	e
viba_48005	MAY/35/2020(2)	cattle	98.9	0	O	ME-SA	Ind-2001	e
viba_44983	VIT/27/2019	cattle	98.9	0	O	ME-SA	Ind-2001	e
viba_44979	VIT/25/2019	porcine	98.9	0	O	ME-SA	Ind-2001	e
viba_45069	VIT/34/2019	cattle	98.9	0	O	ME-SA	Ind-2001	e
viba_47316	TAI/4/2020	cattle	98.9	0	O	ME-SA	Ind-2001	e
viba_47287	LAO/2/2020	cattle	98.9	0	O	ME-SA	Ind-2001	e
viba_44987	VIT/28/2019	water buffalo	98.9	0	O	ME-SA	Ind-2001	e
viba_47299	LAO/5/2020	cattle	98.9	0	O	ME-SA	Ind-2001	e

Most Closely Related Prototype Sequences

see <http://www.wrlfmd.org/fmdv-genome/fmd-prototype-strains>

sequence	virus name	Host	% Id.	# Ambig.	serotype	topotype	lineage	sublineage
viba_30238	MUR/19/2016	cattle	95.3	0	O	ME-SA	Ind-2001	e
viba_293	BHU/3/2009	cattle	93.8	0	O	ME-SA	Ind-2001	d
viba_541	OMN/7/2001	bovine	91.2	0	O	ME-SA	Ind-2001	b
viba_705	KUW/3/97	bovine	91.0	0	O	ME-SA	Ind-2001	a
viba_397	UAE/4/2008	gazelle	90.1	0	O	ME-SA	Ind-2001	c
viba_766	IRN/31/2009	cattle	89.1	0	O	ME-SA	PanAsia-2	FAR-09
viba_285	UKG/35/2001	porcine	88.8	0	O	ME-SA	PanAsia	
viba_719	IRN/88/2009		88.6	0	O	ME-SA	PanAsia-2	ANT-10
viba_650	IRN/8/2005	ovine	88.2	0	O	ME-SA	PanAsia-2	
viba_666	IRN/18/2010	cattle	87.8	0	O	ME-SA	PanAsia-2	BAL-09

Virus sample name:	MAY/877/2021(3)
Sender reference:	877/2021(3)
Location of origin:	Bukit Cheraiah, Shah Alam, Bukit Raja, Petaling, Selangor
Country of origin:	Malaysia
Date of collection:	31/03/2021
Host species:	cattle
Serotype:	O
Topotype:	ME-SA
Lineage:	Ind-2001
Sublineage:	e
Sequence length:	633
Ambiguities:	0
Material submitted for sequencing:	n/a
Harvest date of material:	n/a
Primers:	n/a
Received for sequencing:	n/a
Created:	07/06/2021
Last updated:	07/06/2021
VIBASys IDs: sample 48103, genome 48104, sequence viba_48105, sequencing info 48106	

Most Closely Related Sequences

sequence	virus name	Host	% Id.	# Ambig.	serotype	topotype	lineage	sublineage
viba_48113	MAY/877/2021(6)	cattle	100.0	0	O	ME-SA	Ind-2001	e
viba_48109	MAY/877/2021(5)	cattle	99.8	0	O	ME-SA	Ind-2001	e
viba_47397	VIT/11359/2020a	cattle	98.4	0	O	ME-SA	Ind-2001	e
viba_47393	VIT/11272/2020b	porcine	98.4	0	O	ME-SA	Ind-2001	e
viba_45057	VIT/22/2019	cattle	98.3	0	O	ME-SA	Ind-2001	e
viba_45030	VIT/12/2020	cattle	98.3	0	O	ME-SA	Ind-2001	e
viba_44991	VIT/29/2019	water buffalo	98.1	0	O	ME-SA	Ind-2001	e
viba_45014	VIT/4/2020	cattle	98.1	0	O	ME-SA	Ind-2001	e
viba_47295	LAO/4/2020	cattle	98.1	0	O	ME-SA	Ind-2001	e
viba_45022	VIT/7/2020	porcine	98.1	0	O	ME-SA	Ind-2001	e

Most Closely Related Prototype Sequences

see <http://www.wrlfmd.org/fmdv-genome/fmd-prototype-strains>

sequence	virus name	Host	% Id.	# Ambig.	serotype	topotype	lineage	sublineage
viba_30238	MUR/19/2016	cattle	94.8	0	O	ME-SA	Ind-2001	e
viba_293	BHU/3/2009	cattle	92.7	0	O	ME-SA	Ind-2001	d
viba_541	OMN/7/2001	bovine	90.5	0	O	ME-SA	Ind-2001	b
viba_705	KUW/3/97	bovine	89.9	0	O	ME-SA	Ind-2001	a
viba_397	UAE/4/2008	gazelle	89.3	0	O	ME-SA	Ind-2001	c
viba_766	IRN/31/2009	cattle	88.9	0	O	ME-SA	PanAsia-2	FAR-09
viba_285	UKG/35/2001	porcine	88.4	0	O	ME-SA	PanAsia	
viba_719	IRN/88/2009	cattle	88.3	0	O	ME-SA	PanAsia-2	ANT-10
viba_650	IRN/8/2005	ovine	87.9	0	O	ME-SA	PanAsia-2	
viba_359	Manisa/TUR/69		87.8	0	O	ME-SA		

Virus sample name:	MAY/877/2021(5)
Sender reference:	877/2021(5)
Location of origin:	Bukit Cheraiah, Shah Alam, Bukit Raja, Petaling, Selangor
Country of origin:	Malaysia
Date of collection:	31/03/2021
Host species:	cattle
Serotype:	O
Topotype:	ME-SA
Lineage:	Ind-2001
Sublineage:	e
Sequence length:	633
Ambiguities:	0
Material submitted for sequencing:	n/a
Harvest date of material:	n/a
Primers:	n/a
Received for sequencing:	n/a
Created:	07/06/2021
Last updated:	07/06/2021
VIBASys IDs: sample 48107, genome 48108, sequence viba_48109, sequencing info 48110	

Most Closely Related Sequences

sequence	virus name	Host	% Id.	# Ambig.	serotype	topotype	lineage	sublineage
viba_48105	MAY/877/2021(3)	cattle	99.8	0	O	ME-SA	Ind-2001	e
viba_48113	MAY/877/2021(6)	cattle	99.8	0	O	ME-SA	Ind-2001	e
viba_47397	VIT/11359/2020a	cattle	98.3	0	O	ME-SA	Ind-2001	e
viba_47393	VIT/11272/2020b	porcine	98.3	0	O	ME-SA	Ind-2001	e
viba_45057	VIT/22/2019	cattle	98.1	0	O	ME-SA	Ind-2001	e
viba_45030	VIT/12/2020	cattle	98.1	0	O	ME-SA	Ind-2001	e
viba_44991	VIT/29/2019	water buffalo	97.9	0	O	ME-SA	Ind-2001	e
viba_45014	VIT/4/2020	cattle	97.9	0	O	ME-SA	Ind-2001	e
viba_47295	LAO/4/2020	cattle	97.9	0	O	ME-SA	Ind-2001	e
viba_45022	VIT/7/2020	porcine	97.9	0	O	ME-SA	Ind-2001	e

Most Closely Related Prototype Sequences

see <http://www.wrlfmd.org/fmdv-genome/fmd-prototype-strains>

sequence	virus name	Host	% Id.	# Ambig.	serotype	topotype	lineage	sublineage
viba_30238	MUR/19/2016	cattle	94.6	0	O	ME-SA	Ind-2001	e
viba_293	BHU/3/2009	cattle	92.6	0	O	ME-SA	Ind-2001	d
viba_541	OMN/7/2001	bovine	90.4	0	O	ME-SA	Ind-2001	b
viba_705	KUW/3/97	bovine	89.8	0	O	ME-SA	Ind-2001	a
viba_397	UAE/4/2008	gazelle	89.2	0	O	ME-SA	Ind-2001	c
viba_766	IRN/31/2009	cattle	88.8	0	O	ME-SA	PanAsia-2	FAR-09
viba_719	IRN/88/2009		88.2	0	O	ME-SA	PanAsia-2	ANT-10
viba_285	UKG/35/2001	porcine	88.2	0	O	ME-SA	PanAsia	
viba_650	IRN/8/2005	ovine	87.7	0	O	ME-SA	PanAsia-2	
viba_359	Manisa/TUR/69		87.7	0	O	ME-SA		

Virus sample name:	MAY/877/2021(6)
Sender reference:	877/2021(6)
Location of origin:	Bukit Cheraiah, Shah Alam, Bukit Raja, Petaling, Selangor
Country of origin:	Malaysia
Date of collection:	31/03/2021
Host species:	cattle
Serotype:	O
Topotype:	ME-SA
Lineage:	Ind-2001
Sublineage:	e
Sequence length:	633
Ambiguities:	0
Material submitted for sequencing:	n/a
Harvest date of material:	n/a
Primers:	n/a
Received for sequencing:	n/a
Created:	07/06/2021
Last updated:	07/06/2021
VIBASys IDs: sample 48111, genome 48112, sequence viba_48113, sequencing info 48114	

Most Closely Related Sequences

sequence	virus name	Host	% Id.	# Ambig.	serotype	topotype	lineage	sublineage
viba_48105	MAY/877/2021(3)	cattle	100.0	0	O	ME-SA	Ind-2001	e
viba_48109	MAY/877/2021(5)	cattle	99.8	0	O	ME-SA	Ind-2001	e
viba_47397	VIT/11359/2020a	cattle	98.4	0	O	ME-SA	Ind-2001	e
viba_47393	VIT/11272/2020b	porcine	98.4	0	O	ME-SA	Ind-2001	e
viba_45057	VIT/22/2019	cattle	98.3	0	O	ME-SA	Ind-2001	e
viba_45030	VIT/12/2020	cattle	98.3	0	O	ME-SA	Ind-2001	e
viba_44991	VIT/29/2019	water buffalo	98.1	0	O	ME-SA	Ind-2001	e
viba_45014	VIT/4/2020	cattle	98.1	0	O	ME-SA	Ind-2001	e
viba_47295	LAO/4/2020	cattle	98.1	0	O	ME-SA	Ind-2001	e
viba_45022	VIT/7/2020	porcine	98.1	0	O	ME-SA	Ind-2001	e

Most Closely Related Prototype Sequences

see <http://www.wrlfmd.org/fmdv-genome/fmd-prototype-strains>

sequence	virus name	Host	% Id.	# Ambig.	serotype	topotype	lineage	sublineage
viba_30238	MUR/19/2016	cattle	94.8	0	O	ME-SA	Ind-2001	e
viba_293	BHU/3/2009	cattle	92.7	0	O	ME-SA	Ind-2001	d
viba_541	OMN/7/2001	bovine	90.5	0	O	ME-SA	Ind-2001	b
viba_705	KUW/3/97	bovine	89.9	0	O	ME-SA	Ind-2001	a
viba_397	UAE/4/2008	gazelle	89.3	0	O	ME-SA	Ind-2001	c
viba_766	IRN/31/2009	cattle	88.9	0	O	ME-SA	PanAsia-2	FAR-09
viba_285	UKG/35/2001	porcine	88.4	0	O	ME-SA	PanAsia	
viba_719	IRN/88/2009	cattle	88.3	0	O	ME-SA	PanAsia-2	ANT-10
viba_650	IRN/8/2005	ovine	87.9	0	O	ME-SA	PanAsia-2	
viba_359	Manisa/TUR/69		87.8	0	O	ME-SA		

Virus sample name:	MAY/9/2020
Sender reference:	9/2020
Location of origin:	No.4, Blok 1, Felda Lui Timur, 72120 Bdr Sri Jempol. Serting Hulu, Jempol, Negeri Sembilan
Country of origin:	Malaysia
Date of collection:	03/01/2020
Host species:	cattle
Serotype:	O
Topotype:	ME-SA
Lineage:	Ind-2001
Sublineage:	e
Sequence length:	633
Ambiguities:	0
Material submitted for sequencing:	n/a
Harvest date of material:	n/a
Primers:	n/a
Received for sequencing:	n/a
Created:	07/06/2021
Last updated:	07/06/2021

VIBASys IDs: sample 47991, genome 47992, sequence viba_47993, sequencing info 47994

Most Closely Related Sequences

sequence	virus name	Host	% Id.	# Ambig.	serotype	topotype	lineage	sublineage
viba_48009	MAY/127/2020	cattle	100.0	0	O	ME-SA	Ind-2001	e
viba_47295	LAO/4/2020	cattle	99.8	0	O	ME-SA	Ind-2001	e
viba_45022	VIT/7/2020	porcine	99.8	0	O	ME-SA	Ind-2001	e
viba_48005	MAY/35/2020(2)	cattle	99.8	0	O	ME-SA	Ind-2001	e
viba_44983	VIT/27/2019	cattle	99.8	0	O	ME-SA	Ind-2001	e
viba_44979	VIT/25/2019	porcine	99.8	0	O	ME-SA	Ind-2001	e
viba_47316	TAI/4/2020	cattle	99.8	0	O	ME-SA	Ind-2001	e
viba_47287	LAO/2/2020	cattle	99.8	0	O	ME-SA	Ind-2001	e
viba_44987	VIT/28/2019	water buffalo	99.8	0	O	ME-SA	Ind-2001	e
viba_47299	LAO/5/2020	cattle	99.8	0	O	ME-SA	Ind-2001	e

Most Closely Related Prototype Sequences

see <http://www.wrlfmd.org/fmdv-genome/fmd-prototype-strains>

sequence	virus name	Host	% Id.	# Ambig.	serotype	topotype	lineage	sublineage
viba_30238	MUR/19/2016	cattle	95.9	0	O	ME-SA	Ind-2001	e
viba_293	BHU/3/2009	cattle	93.8	0	O	ME-SA	Ind-2001	d
viba_541	OMN/7/2001	bovine	91.3	0	O	ME-SA	Ind-2001	b
viba_705	KUW/3/97	bovine	91.0	0	O	ME-SA	Ind-2001	a
viba_397	UAE/4/2008	gazelle	89.7	0	O	ME-SA	Ind-2001	c
viba_766	IRN/31/2009	cattle	88.5	0	O	ME-SA	PanAsia-2	FAR-09
viba_285	UKG/35/2001	porcine	88.2	0	O	ME-SA	PanAsia	
viba_719	IRN/88/2009		88.0	0	O	ME-SA	PanAsia-2	ANT-10
viba_650	IRN/8/2005	ovine	87.9	0	O	ME-SA	PanAsia-2	
viba_359	Manisa/TUR/69		87.4	0	O	ME-SA		

Virus sample name:	MAY/43/2020
Sender reference:	43/2020
Location of origin:	Parit Baru Sg Lang, 45200 Sabak Bernam, Selangor
Country of origin:	Malaysia
Date of collection:	03/01/2020
Host species:	cattle
Serotype:	O
Topotype:	ME-SA
Lineage:	Ind-2001
Sublineage:	e
Sequence length:	633
Ambiguities:	0
Material submitted for sequencing:	n/a
Harvest date of material:	n/a
Primers:	n/a
Received for sequencing:	n/a
Created:	07/06/2021
Last updated:	07/06/2021
VIBASys IDs: sample 47995, genome 47996, sequence viba_47997, sequencing info 47998	

Most Closely Related Sequences

sequence	virus name	Host	% Id.	# Ambig.	serotype	topotype	lineage	sublineage
viba_48001	MAY/45/2020	cattle	99.8	0	O	ME-SA	Ind-2001	e
viba_47295	LAO/4/2020	cattle	99.5	0	O	ME-SA	Ind-2001	e
viba_45022	VIT/7/2020	porcine	99.5	0	O	ME-SA	Ind-2001	e
viba_48005	MAY/35/2020(2)	cattle	99.5	0	O	ME-SA	Ind-2001	e
viba_44983	VIT/27/2019	cattle	99.5	0	O	ME-SA	Ind-2001	e
viba_44979	VIT/25/2019	porcine	99.5	0	O	ME-SA	Ind-2001	e
viba_47316	TAI/4/2020	cattle	99.5	0	O	ME-SA	Ind-2001	e
viba_47287	LAO/2/2020	cattle	99.5	0	O	ME-SA	Ind-2001	e
viba_44987	VIT/28/2019	water buffalo	99.5	0	O	ME-SA	Ind-2001	e
viba_47299	LAO/5/2020	cattle	99.5	0	O	ME-SA	Ind-2001	e

Most Closely Related Prototype Sequences

see <http://www.wrlfmd.org/fmdv-genome/fmd-prototype-strains>

sequence	virus name	Host	% Id.	# Ambig.	serotype	topotype	lineage	sublineage
viba_30238	MUR/19/2016	cattle	95.9	0	O	ME-SA	Ind-2001	e
viba_293	BHU/3/2009	cattle	93.5	0	O	ME-SA	Ind-2001	d
viba_541	OMN/7/2001	bovine	91.3	0	O	ME-SA	Ind-2001	b
viba_705	KUW/3/97	bovine	90.7	0	O	ME-SA	Ind-2001	a
viba_397	UAE/4/2008	gazelle	89.7	0	O	ME-SA	Ind-2001	c
viba_766	IRN/31/2009	cattle	88.3	0	O	ME-SA	PanAsia-2	FAR-09
viba_285	UKG/35/2001	porcine	88.0	0	O	ME-SA	PanAsia	
viba_650	IRN/8/2005	ovine	87.7	0	O	ME-SA	PanAsia-2	
viba_719	IRN/88/2009		87.5	0	O	ME-SA	PanAsia-2	ANT-10
viba_359	Manisa/TUR/69		87.5	0	O	ME-SA		

Virus sample name:	MAY/45/2020
Sender reference:	45/2020
Location of origin:	Jln Hj Karim, Teluk Rhu, 45200 Sabak Bernam, Selangor
Country of origin:	Malaysia
Date of collection:	03/01/2020
Host species:	cattle
Serotype:	O
Topotype:	ME-SA
Lineage:	Ind-2001
Sublineage:	e
Sequence length:	633
Ambiguities:	0
Material submitted for sequencing:	n/a
Harvest date of material:	n/a
Primers:	n/a
Received for sequencing:	n/a
Created:	07/06/2021
Last updated:	07/06/2021

VIBASys IDs: sample 47999, genome 48000, sequence viba_48001, sequencing info 48002

Most Closely Related Sequences

sequence	virus name	Host	% Id.	# Ambig.	serotype	topotype	lineage	sublineage
viba_47997	MAY/43/2020	cattle	99.8	0	O	ME-SA	Ind-2001	e
viba_47295	LAO/4/2020	cattle	99.7	0	O	ME-SA	Ind-2001	e
viba_45022	VIT/7/2020	porcine	99.7	0	O	ME-SA	Ind-2001	e
viba_48005	MAY/35/2020(2)	cattle	99.7	0	O	ME-SA	Ind-2001	e
viba_44983	VIT/27/2019	cattle	99.7	0	O	ME-SA	Ind-2001	e
viba_44979	VIT/25/2019	porcine	99.7	0	O	ME-SA	Ind-2001	e
viba_47316	TAI/4/2020	cattle	99.7	0	O	ME-SA	Ind-2001	e
viba_47287	LAO/2/2020	cattle	99.7	0	O	ME-SA	Ind-2001	e
viba_44987	VIT/28/2019	water buffalo	99.7	0	O	ME-SA	Ind-2001	e
viba_47299	LAO/5/2020	cattle	99.7	0	O	ME-SA	Ind-2001	e

Most Closely Related Prototype Sequences

see <http://www.wrlfmd.org/fmdv-genome/fmd-prototype-strains>

sequence	virus name	Host	% Id.	# Ambig.	serotype	topotype	lineage	sublineage
viba_30238	MUR/19/2016	cattle	96.1	0	O	ME-SA	Ind-2001	e
viba_293	BHU/3/2009	cattle	93.7	0	O	ME-SA	Ind-2001	d
viba_541	OMN/7/2001	bovine	91.5	0	O	ME-SA	Ind-2001	b
viba_705	KUW/3/97	bovine	90.9	0	O	ME-SA	Ind-2001	a
viba_397	UAE/4/2008	gazelle	89.9	0	O	ME-SA	Ind-2001	c
viba_766	IRN/31/2009	cattle	88.5	0	O	ME-SA	PanAsia-2	FAR-09
viba_285	UKG/35/2001	porcine	88.2	0	O	ME-SA	PanAsia	
viba_650	IRN/8/2005	ovine	87.9	0	O	ME-SA	PanAsia-2	
viba_719	IRN/88/2009		87.7	0	O	ME-SA	PanAsia-2	ANT-10
viba_359	Manisa/TUR/69		87.7	0	O	ME-SA		

Virus sample name:	MAY/127/2020
Sender reference:	127/2020
Location of origin:	No. 63, Felda Palong, Jeram Padang, Gemas, Negeri Sembilan
Country of origin:	Malaysia
Date of collection:	17/01/2020
Host species:	cattle
Serotype:	O
Topotype:	ME-SA
Lineage:	Ind-2001
Sublineage:	e
Sequence length:	633
Ambiguities:	0
Material submitted for sequencing:	n/a
Harvest date of material:	n/a
Primers:	n/a
Received for sequencing:	n/a
Created:	07/06/2021
Last updated:	07/06/2021

VIBASys IDs: sample 48007, genome 48008, sequence viba_48009, sequencing info 48010

Most Closely Related Sequences

sequence	virus name	Host	% Id.	# Ambig.	serotype	topotype	lineage	sublineage
viba_47993	MAY/9/2020	cattle	100.0	0	O	ME-SA	Ind-2001	e
viba_47295	LAO/4/2020	cattle	99.8	0	O	ME-SA	Ind-2001	e
viba_45022	VIT/7/2020	porcine	99.8	0	O	ME-SA	Ind-2001	e
viba_48005	MAY/35/2020(2)	cattle	99.8	0	O	ME-SA	Ind-2001	e
viba_44983	VIT/27/2019	cattle	99.8	0	O	ME-SA	Ind-2001	e
viba_44979	VIT/25/2019	porcine	99.8	0	O	ME-SA	Ind-2001	e
viba_47316	TAI/4/2020	cattle	99.8	0	O	ME-SA	Ind-2001	e
viba_47287	LAO/2/2020	cattle	99.8	0	O	ME-SA	Ind-2001	e
viba_44987	VIT/28/2019	water buffalo	99.8	0	O	ME-SA	Ind-2001	e
viba_47299	LAO/5/2020	cattle	99.8	0	O	ME-SA	Ind-2001	e

Most Closely Related Prototype Sequences

see <http://www.wrlfmd.org/fmdv-genome/fmd-prototype-strains>

sequence	virus name	Host	% Id.	# Ambig.	serotype	topotype	lineage	sublineage
viba_30238	MUR/19/2016	cattle	95.9	0	O	ME-SA	Ind-2001	e
viba_293	BHU/3/2009	cattle	93.8	0	O	ME-SA	Ind-2001	d
viba_541	OMN/7/2001	bovine	91.3	0	O	ME-SA	Ind-2001	b
viba_705	KUW/3/97	bovine	91.0	0	O	ME-SA	Ind-2001	a
viba_397	UAE/4/2008	gazelle	89.7	0	O	ME-SA	Ind-2001	c
viba_766	IRN/31/2009	cattle	88.5	0	O	ME-SA	PanAsia-2	FAR-09
viba_285	UKG/35/2001	porcine	88.2	0	O	ME-SA	PanAsia	
viba_719	IRN/88/2009	cattle	88.0	0	O	ME-SA	PanAsia-2	ANT-10
viba_650	IRN/8/2005	ovine	87.9	0	O	ME-SA	PanAsia-2	
viba_359	Manisa/TUR/69		87.4	0	O	ME-SA		

Virus sample name:	MAY/211/2020
Sender reference:	211/2020
Location of origin:	Kampung Janglau 2, 26800 Kuala Rompin, Pahang
Country of origin:	Malaysia
Date of collection:	31/01/2020
Host species:	cattle
Serotype:	O
Topotype:	ME-SA
Lineage:	Ind-2001
Sublineage:	e
Sequence length:	633
Ambiguities:	0
Material submitted for sequencing:	n/a
Harvest date of material:	n/a
Primers:	n/a
Received for sequencing:	n/a
Created:	07/06/2021
Last updated:	07/06/2021

VIBASys IDs: sample 48019, genome 48020, sequence viba_48021, sequencing info 48022

Most Closely Related Sequences

sequence	virus name	Host	% Id.	# Ambig.	serotype	topotype	lineage	sublineage
viba_47989	MAY/7/2020(2)	cattle	100.0	0	O	ME-SA	Ind-2001	e
viba_48029	MAY/781/2020	cattle	99.8	0	O	ME-SA	Ind-2001	e
viba_48025	MAY/430/2020	cattle	99.7	0	O	ME-SA	Ind-2001	e
viba_48001	MAY/45/2020	cattle	99.5	0	O	ME-SA	Ind-2001	e
viba_47295	LAO/4/2020	cattle	99.5	0	O	ME-SA	Ind-2001	e
viba_45022	VIT/7/2020	porcine	99.5	0	O	ME-SA	Ind-2001	e
viba_48005	MAY/35/2020(2)	cattle	99.5	0	O	ME-SA	Ind-2001	e
viba_44983	VIT/27/2019	cattle	99.5	0	O	ME-SA	Ind-2001	e
viba_44979	VIT/25/2019	porcine	99.5	0	O	ME-SA	Ind-2001	e
viba_47316	TAI/4/2020	cattle	99.5	0	O	ME-SA	Ind-2001	e

Most Closely Related Prototype Sequences

see <http://www.wrlfmd.org/fmdv-genome/fmd-prototype-strains>

sequence	virus name	Host	% Id.	# Ambig.	serotype	topotype	lineage	sublineage
viba_30238	MUR/19/2016	cattle	95.9	0	O	ME-SA	Ind-2001	e
viba_293	BHU/3/2009	cattle	93.5	0	O	ME-SA	Ind-2001	d
viba_541	OMN/7/2001	bovine	91.0	0	O	ME-SA	Ind-2001	b
viba_705	KUW/3/97	bovine	90.4	0	O	ME-SA	Ind-2001	a
viba_397	UAE/4/2008	gazelle	89.4	0	O	ME-SA	Ind-2001	c
viba_650	IRN/8/2005	ovine	88.0	0	O	ME-SA	PanAsia-2	
viba_766	IRN/31/2009	cattle	88.0	0	O	ME-SA	PanAsia-2	FAR-09
viba_719	IRN/88/2009		87.8	0	O	ME-SA	PanAsia-2	ANT-10
viba_285	UKG/35/2001	porcine	87.7	0	O	ME-SA	PanAsia	
viba_359	Manisa/TUR/69		87.5	0	O	ME-SA		

Virus sample name:	MAY/430/2020
Sender reference:	430/2020
Location of origin:	No. 10 Kg. Diah Besar 72000 Kuala Pilah, Negeri Sembilan
Country of origin:	Malaysia
Date of collection:	17/02/2020
Host species:	cattle
Serotype:	O
Topotype:	ME-SA
Lineage:	Ind-2001
Sublineage:	e
Sequence length:	633
Ambiguities:	0
Material submitted for sequencing:	n/a
Harvest date of material:	n/a
Primers:	n/a
Received for sequencing:	n/a
Created:	07/06/2021
Last updated:	07/06/2021

VIBASys IDs: sample 48023, genome 48024, sequence viba_48025, sequencing info 48026

Most Closely Related Sequences

sequence	virus name	Host	% Id.	# Ambig.	serotype	topotype	lineage	sublineage
viba_48021	MAY/211/2020	cattle	99.7	0	O	ME-SA	Ind-2001	e
viba_47989	MAY/7/2020(2)	cattle	99.7	0	O	ME-SA	Ind-2001	e
viba_48029	MAY/781/2020	cattle	99.5	0	O	ME-SA	Ind-2001	e
viba_48001	MAY/45/2020	cattle	99.2	0	O	ME-SA	Ind-2001	e
viba_47295	LAO/4/2020	cattle	99.2	0	O	ME-SA	Ind-2001	e
viba_45022	VIT/7/2020	porcine	99.2	0	O	ME-SA	Ind-2001	e
viba_48005	MAY/35/2020(2)	cattle	99.2	0	O	ME-SA	Ind-2001	e
viba_44983	VIT/27/2019	cattle	99.2	0	O	ME-SA	Ind-2001	e
viba_44979	VIT/25/2019	porcine	99.2	0	O	ME-SA	Ind-2001	e
viba_47316	TAI/4/2020	cattle	99.2	0	O	ME-SA	Ind-2001	e

Most Closely Related Prototype Sequences

see <http://www.wrlfmd.org/fmdv-genome/fmd-prototype-strains>

sequence	virus name	Host	% Id.	# Ambig.	serotype	topotype	lineage	sublineage
viba_30238	MUR/19/2016	cattle	95.6	0	O	ME-SA	Ind-2001	e
viba_293	BHU/3/2009	cattle	93.2	0	O	ME-SA	Ind-2001	d
viba_541	OMN/7/2001	bovine	91.0	0	O	ME-SA	Ind-2001	b
viba_705	KUW/3/97	bovine	90.1	0	O	ME-SA	Ind-2001	a
viba_397	UAE/4/2008	gazelle	89.1	0	O	ME-SA	Ind-2001	c
viba_650	IRN/8/2005	ovine	87.7	0	O	ME-SA	PanAsia-2	
viba_766	IRN/31/2009	cattle	87.7	0	O	ME-SA	PanAsia-2	FAR-09
viba_719	IRN/88/2009		87.5	0	O	ME-SA	PanAsia-2	ANT-10
viba_285	UKG/35/2001	porcine	87.4	0	O	ME-SA	PanAsia	
viba_359	Manisa/TUR/69		87.2	0	O	ME-SA		

Virus sample name:	MAY/781/2020
Sender reference:	781/2020
Location of origin:	413 Felda Bukit Senggeh 77100 Asahan, Jasin, Melaka
Country of origin:	Malaysia
Date of collection:	13/04/2020
Host species:	cattle
Serotype:	O
Topotype:	ME-SA
Lineage:	Ind-2001
Sublineage:	e
Sequence length:	633
Ambiguities:	0
Material submitted for sequencing:	n/a
Harvest date of material:	n/a
Primers:	n/a
Received for sequencing:	n/a
Created:	07/06/2021
Last updated:	07/06/2021

VIBASys IDs: sample 48027, genome 48028, sequence viba_48029, sequencing info 48030

Most Closely Related Sequences

sequence	virus name	Host	% Id.	# Ambig.	serotype	topotype	lineage	sublineage
viba_48021	MAY/211/2020	cattle	99.8	0	O	ME-SA	Ind-2001	e
viba_47989	MAY/7/2020(2)	cattle	99.8	0	O	ME-SA	Ind-2001	e
viba_48025	MAY/430/2020	cattle	99.5	0	O	ME-SA	Ind-2001	e
viba_48001	MAY/45/2020	cattle	99.4	0	O	ME-SA	Ind-2001	e
viba_47295	LAO/4/2020	cattle	99.4	0	O	ME-SA	Ind-2001	e
viba_45022	VIT/7/2020	porcine	99.4	0	O	ME-SA	Ind-2001	e
viba_48005	MAY/35/2020(2)	cattle	99.4	0	O	ME-SA	Ind-2001	e
viba_44983	VIT/27/2019	cattle	99.4	0	O	ME-SA	Ind-2001	e
viba_44979	VIT/25/2019	porcine	99.4	0	O	ME-SA	Ind-2001	e
viba_47316	TAI/4/2020	cattle	99.4	0	O	ME-SA	Ind-2001	e

Most Closely Related Prototype Sequences

see <http://www.wrlfmd.org/fmdv-genome/fmd-prototype-strains>

sequence	virus name	Host	% Id.	# Ambig.	serotype	topotype	lineage	sublineage
viba_30238	MUR/19/2016	cattle	95.7	0	O	ME-SA	Ind-2001	e
viba_293	BHU/3/2009	cattle	93.4	0	O	ME-SA	Ind-2001	d
viba_541	OMN/7/2001	bovine	90.9	0	O	ME-SA	Ind-2001	b
viba_705	KUW/3/97	bovine	90.2	0	O	ME-SA	Ind-2001	a
viba_397	UAE/4/2008	gazelle	89.3	0	O	ME-SA	Ind-2001	c
viba_650	IRN/8/2005	ovine	87.9	0	O	ME-SA	PanAsia-2	
viba_766	IRN/31/2009	cattle	87.8	0	O	ME-SA	PanAsia-2	FAR-09
viba_719	IRN/88/2009		87.7	0	O	ME-SA	PanAsia-2	ANT-10
viba_285	UKG/35/2001	porcine	87.6	0	O	ME-SA	PanAsia	
viba_359	Manisa/TUR/69		87.4	0	O	ME-SA		

Virus sample name:	MAY/1388/2020
Sender reference:	1388/2020
Location of origin:	Jpvnk Kubang Kerian, 16150 Kota Bharu Kelantan
Country of origin:	Malaysia
Date of collection:	14/07/2020
Host species:	cattle
Serotype:	O
Topotype:	ME-SA
Lineage:	Ind-2001
Sublineage:	e
Sequence length:	633
Ambiguities:	0
Material submitted for sequencing:	n/a
Harvest date of material:	n/a
Primers:	n/a
Received for sequencing:	n/a
Created:	07/06/2021
Last updated:	07/06/2021

VIBASys IDs: sample 48031, genome 48032, sequence viba_48033, sequencing info 48034

Most Closely Related Sequences

sequence	virus name	Host	% Id.	# Ambig.	serotype	topotype	lineage	sublineage
viba_48037	MAY/2081/2020	cattle	99.5	0	O	ME-SA	Ind-2001	e
viba_48073	MAY/4050/2020(2)	cattle	99.5	0	O	ME-SA	Ind-2001	e
viba_47389	VIT/11272/2020a	porcine	99.5	0	O	ME-SA	Ind-2001	e
viba_48045	MAY/3245/2020(2)	cattle	99.5	0	O	ME-SA	Ind-2001	e
viba_48069	MAY/3933/2020(3)	cattle	99.5	0	O	ME-SA	Ind-2001	e
viba_48101	MAY/4425/2020	cattle	99.5	0	O	ME-SA	Ind-2001	e
viba_48041	MAY/3041/2020(1)	cattle	99.5	0	O	ME-SA	Ind-2001	e
viba_47401	VIT/11359/2020b	cattle	99.5	0	O	ME-SA	Ind-2001	e
viba_48085	MAY/4302/2020(1)	cattle	99.5	0	O	ME-SA	Ind-2001	e
viba_47295	LAO/4/2020	cattle	99.4	0	O	ME-SA	Ind-2001	e

Most Closely Related Prototype Sequences

see <http://www.wrlfmd.org/fmdv-genome/fmd-prototype-strains>

sequence	virus name	Host	% Id.	# Ambig.	serotype	topotype	lineage	sublineage
viba_30238	MUR/19/2016	cattle	95.6	0	O	ME-SA	Ind-2001	e
viba_293	BHU/3/2009	cattle	94.0	0	O	ME-SA	Ind-2001	d
viba_541	OMN/7/2001	bovine	90.9	0	O	ME-SA	Ind-2001	b
viba_705	KUW/3/97	bovine	90.5	0	O	ME-SA	Ind-2001	a
viba_397	UAE/4/2008	gazelle	89.4	0	O	ME-SA	Ind-2001	c
viba_766	IRN/31/2009	cattle	88.2	0	O	ME-SA	PanAsia-2	FAR-09
viba_285	UKG/35/2001	porcine	87.7	0	O	ME-SA	PanAsia	
viba_650	IRN/8/2005	ovine	87.5	0	O	ME-SA	PanAsia-2	
viba_719	IRN/88/2009		87.0	0	O	ME-SA	PanAsia-2	ANT-10
viba_359	Manisa/TUR/69		87.0	0	O	ME-SA		

Virus sample name:	MAY/2081/2020
Sender reference:	2081/2020
Location of origin:	Kg Jeram Kedah, Ulu Beranang, 71750 Lenggeng, Negeri Sembilan.
Country of origin:	Malaysia
Date of collection:	28/08/2020
Host species:	cattle
Serotype:	O
Topotype:	ME-SA
Lineage:	Ind-2001
Sublineage:	e
Sequence length:	633
Ambiguities:	0
Material submitted for sequencing:	n/a
Harvest date of material:	n/a
Primers:	n/a
Received for sequencing:	n/a
Created:	07/06/2021
Last updated:	07/06/2021

VIBASys IDs: sample 48035, genome 48036, sequence viba_48037, sequencing info 48038

Most Closely Related Sequences

sequence	virus name	Host	% Id.	# Ambig.	serotype	topotype	lineage	sublineage
viba_48073	MAY/4050/2020(2)	cattle	100.0	0	O	ME-SA	Ind-2001	e
viba_48045	MAY/3245/2020(2)	cattle	100.0	0	O	ME-SA	Ind-2001	e
viba_48069	MAY/3933/2020(3)	cattle	100.0	0	O	ME-SA	Ind-2001	e
viba_48041	MAY/3041/2020(1)	cattle	100.0	0	O	ME-SA	Ind-2001	e
viba_48085	MAY/4302/2020(1)	cattle	100.0	0	O	ME-SA	Ind-2001	e
viba_48053	MAY/3455/2020	cattle	99.8	0	O	ME-SA	Ind-2001	e
viba_48065	MAY/3966/2020	cattle	99.8	0	O	ME-SA	Ind-2001	e
viba_48057	MAY/3696/2020(1)	cattle	99.8	0	O	ME-SA	Ind-2001	e
viba_48089	MAY/4390/2020	cattle	99.8	0	O	ME-SA	Ind-2001	e
viba_48101	MAY/4425/2020	cattle	99.7	0	O	ME-SA	Ind-2001	e

Most Closely Related Prototype Sequences

see <http://www.wrlfmd.org/fmdv-genome/fmd-prototype-strains>

sequence	virus name	Host	% Id.	# Ambig.	serotype	topotype	lineage	sublineage
viba_30238	MUR/19/2016	cattle	95.7	0	O	ME-SA	Ind-2001	e
viba_293	BHU/3/2009	cattle	93.8	0	O	ME-SA	Ind-2001	d
viba_541	OMN/7/2001	bovine	91.0	0	O	ME-SA	Ind-2001	b
viba_705	KUW/3/97	bovine	90.7	0	O	ME-SA	Ind-2001	a
viba_397	UAE/4/2008	gazelle	89.9	0	O	ME-SA	Ind-2001	c
viba_766	IRN/31/2009	cattle	88.3	0	O	ME-SA	PanAsia-2	FAR-09
viba_285	UKG/35/2001	porcine	87.9	0	O	ME-SA	PanAsia	
viba_650	IRN/8/2005	ovine	87.7	0	O	ME-SA	PanAsia-2	
viba_719	IRN/88/2009		87.5	0	O	ME-SA	PanAsia-2	ANT-10
viba_359	Manisa/TUR/69		87.2	0	O	ME-SA		

Virus sample name:	MAY/3455/2020
Sender reference:	3455/2020
Location of origin:	Felda Sri Kekwa Jengka 5, Maran, Chenor, Pahang
Country of origin:	Malaysia
Date of collection:	14/10/2020
Host species:	cattle
Serotype:	O
Topotype:	ME-SA
Lineage:	Ind-2001
Sublineage:	e
Sequence length:	633
Ambiguities:	0
Material submitted for sequencing:	n/a
Harvest date of material:	n/a
Primers:	n/a
Received for sequencing:	n/a
Created:	07/06/2021
Last updated:	07/06/2021

VIBASys IDs: sample 48051, genome 48052, sequence viba_48053, sequencing info 48054

Most Closely Related Sequences

sequence	virus name	Host	% Id.	# Ambig.	serotype	topotype	lineage	sublineage
viba_48037	MAY/2081/2020	cattle	99.8	0	O	ME-SA	Ind-2001	e
viba_48073	MAY/4050/2020(2)	cattle	99.8	0	O	ME-SA	Ind-2001	e
viba_48045	MAY/3245/2020(2)	cattle	99.8	0	O	ME-SA	Ind-2001	e
viba_48069	MAY/3933/2020(3)	cattle	99.8	0	O	ME-SA	Ind-2001	e
viba_48041	MAY/3041/2020(1)	cattle	99.8	0	O	ME-SA	Ind-2001	e
viba_48085	MAY/4302/2020(1)	cattle	99.8	0	O	ME-SA	Ind-2001	e
viba_48065	MAY/3966/2020	cattle	99.7	0	O	ME-SA	Ind-2001	e
viba_48057	MAY/3696/2020(1)	cattle	99.7	0	O	ME-SA	Ind-2001	e
viba_48089	MAY/4390/2020	cattle	99.7	0	O	ME-SA	Ind-2001	e
viba_48101	MAY/4425/2020	cattle	99.5	0	O	ME-SA	Ind-2001	e

Most Closely Related Prototype Sequences

see <http://www.wrlfmd.org/fmdv-genome/fmd-prototype-strains>

sequence	virus name	Host	% Id.	# Ambig.	serotype	topotype	lineage	sublineage
viba_30238	MUR/19/2016	cattle	95.6	0	O	ME-SA	Ind-2001	e
viba_293	BHU/3/2009	cattle	93.7	0	O	ME-SA	Ind-2001	d
viba_541	OMN/7/2001	bovine	90.9	0	O	ME-SA	Ind-2001	b
viba_705	KUW/3/97	bovine	90.5	0	O	ME-SA	Ind-2001	a
viba_397	UAE/4/2008	gazelle	89.7	0	O	ME-SA	Ind-2001	c
viba_766	IRN/31/2009	cattle	88.2	0	O	ME-SA	PanAsia-2	FAR-09
viba_285	UKG/35/2001	porcine	87.7	0	O	ME-SA	PanAsia	
viba_650	IRN/8/2005	ovine	87.5	0	O	ME-SA	PanAsia-2	
viba_719	IRN/88/2009		87.4	0	O	ME-SA	PanAsia-2	ANT-10
viba_359	Manisa/TUR/69		87.0	0	O	ME-SA		

Virus sample name:	MAY/3804/2020
Sender reference:	3804/2020
Location of origin:	Ladang Ternakan Binjul Dalam, 09310 Mukim Tawar, Baling, Kedah
Country of origin:	Malaysia
Date of collection:	01/11/2020
Host species:	cattle
Serotype:	O
Topotype:	ME-SA
Lineage:	Ind-2001
Sublineage:	e
Sequence length:	633
Ambiguities:	0
Material submitted for sequencing:	n/a
Harvest date of material:	n/a
Primers:	n/a
Received for sequencing:	n/a
Created:	07/06/2021
Last updated:	07/06/2021

VIBASys IDs: sample 48059, genome 48060, sequence viba_48061, sequencing info 48062

Most Closely Related Sequences

sequence	virus name	Host	% Id.	# Ambig.	serotype	topotype	lineage	sublineage
viba_47389	VIT/11272/2020a	porcine	99.4	0	O	ME-SA	Ind-2001	e
viba_47401	VIT/11359/2020b	cattle	99.4	0	O	ME-SA	Ind-2001	e
viba_48033	MAY/1388/2020	cattle	99.2	0	O	ME-SA	Ind-2001	e
viba_48037	MAY/2081/2020	cattle	99.1	0	O	ME-SA	Ind-2001	e
viba_48073	MAY/4050/2020(2)	cattle	99.1	0	O	ME-SA	Ind-2001	e
viba_48045	MAY/3245/2020(2)	cattle	99.1	0	O	ME-SA	Ind-2001	e
viba_48069	MAY/3933/2020(3)	cattle	99.1	0	O	ME-SA	Ind-2001	e
viba_48101	MAY/4425/2020	cattle	99.1	0	O	ME-SA	Ind-2001	e
viba_48041	MAY/3041/2020(1)	cattle	99.1	0	O	ME-SA	Ind-2001	e
viba_48085	MAY/4302/2020(1)	cattle	99.1	0	O	ME-SA	Ind-2001	e

Most Closely Related Prototype Sequences

see <http://www.wrlfmd.org/fmdv-genome/fmd-prototype-strains>

sequence	virus name	Host	% Id.	# Ambig.	serotype	topotype	lineage	sublineage
viba_30238	MUR/19/2016	cattle	95.1	0	O	ME-SA	Ind-2001	e
viba_293	BHU/3/2009	cattle	93.5	0	O	ME-SA	Ind-2001	d
viba_541	OMN/7/2001	bovine	90.7	0	O	ME-SA	Ind-2001	b
viba_705	KUW/3/97	bovine	90.4	0	O	ME-SA	Ind-2001	a
viba_397	UAE/4/2008	gazelle	89.3	0	O	ME-SA	Ind-2001	c
viba_766	IRN/31/2009	cattle	88.3	0	O	ME-SA	PanAsia-2	FAR-09
viba_650	IRN/8/2005	ovine	87.9	0	O	ME-SA	PanAsia-2	
viba_285	UKG/35/2001	porcine	87.6	0	O	ME-SA	PanAsia	
viba_359	Manisa/TUR/69		87.2	0	O	ME-SA		
viba_666	IRN/18/2010	cattle	87.0	0	O	ME-SA	PanAsia-2	BAL-09

Virus sample name:	MAY/3966/2020
Sender reference:	3966/2020
Location of origin:	Kg. Batu 2, 71400 Pedas, Negeri Sembilan
Country of origin:	Malaysia
Date of collection:	10/11/2020
Host species:	cattle
Serotype:	O
Topotype:	ME-SA
Lineage:	Ind-2001
Sublineage:	e
Sequence length:	633
Ambiguities:	0
Material submitted for sequencing:	n/a
Harvest date of material:	n/a
Primers:	n/a
Received for sequencing:	n/a
Created:	07/06/2021
Last updated:	07/06/2021
VIBASys IDs: sample 48063, genome 48064, sequence viba_48065, sequencing info 48066	

Most Closely Related Sequences

sequence	virus name	Host	% Id.	# Ambig.	serotype	topotype	lineage	sublineage
viba_48037	MAY/2081/2020	cattle	99.8	0	O	ME-SA	Ind-2001	e
viba_48073	MAY/4050/2020(2)	cattle	99.8	0	O	ME-SA	Ind-2001	e
viba_48045	MAY/3245/2020(2)	cattle	99.8	0	O	ME-SA	Ind-2001	e
viba_48069	MAY/3933/2020(3)	cattle	99.8	0	O	ME-SA	Ind-2001	e
viba_48101	MAY/4425/2020	cattle	99.8	0	O	ME-SA	Ind-2001	e
viba_48041	MAY/3041/2020(1)	cattle	99.8	0	O	ME-SA	Ind-2001	e
viba_48085	MAY/4302/2020(1)	cattle	99.8	0	O	ME-SA	Ind-2001	e
viba_48053	MAY/3455/2020	cattle	99.7	0	O	ME-SA	Ind-2001	e
viba_48081	MAY/4123/2020(2)	cattle	99.7	0	O	ME-SA	Ind-2001	e
viba_48077	MAY/4122/2020(1)	cattle	99.7	0	O	ME-SA	Ind-2001	e

Most Closely Related Prototype Sequences

see <http://www.wrlfmd.org/fmdv-genome/fmd-prototype-strains>

sequence	virus name	Host	% Id.	# Ambig.	serotype	topotype	lineage	sublineage
viba_30238	MUR/19/2016	cattle	95.6	0	O	ME-SA	Ind-2001	e
viba_293	BHU/3/2009	cattle	93.7	0	O	ME-SA	Ind-2001	d
viba_541	OMN/7/2001	bovine	90.9	0	O	ME-SA	Ind-2001	b
viba_705	KUW/3/97	bovine	90.5	0	O	ME-SA	Ind-2001	a
viba_397	UAE/4/2008	gazelle	89.7	0	O	ME-SA	Ind-2001	c
viba_766	IRN/31/2009	cattle	88.2	0	O	ME-SA	PanAsia-2	FAR-09
viba_285	UKG/35/2001	porcine	87.7	0	O	ME-SA	PanAsia	
viba_650	IRN/8/2005	ovine	87.5	0	O	ME-SA	PanAsia-2	
viba_719	IRN/88/2009		87.4	0	O	ME-SA	PanAsia-2	ANT-10
viba_359	Manisa/TUR/69		87.0	0	O	ME-SA		

Virus sample name:	MAY/4390/2020
Sender reference:	4390/2020
Location of origin:	No, 42 Kg Paya Teh 27000 Jerantut, Pahang
Country of origin:	Malaysia
Date of collection:	16/12/2020
Host species:	cattle
Serotype:	O
Topotype:	ME-SA
Lineage:	Ind-2001
Sublineage:	e
Sequence length:	633
Ambiguities:	0
Material submitted for sequencing:	n/a
Harvest date of material:	n/a
Primers:	n/a
Received for sequencing:	n/a
Created:	07/06/2021
Last updated:	07/06/2021

VIBASys IDs: sample 48087, genome 48088, sequence viba_48089, sequencing info 48090

Most Closely Related Sequences

sequence	virus name	Host	% Id.	# Ambig.	serotype	topotype	lineage	sublineage
viba_48037	MAY/2081/2020	cattle	99.8	0	O	ME-SA	Ind-2001	e
viba_48073	MAY/4050/2020(2)	cattle	99.8	0	O	ME-SA	Ind-2001	e
viba_48045	MAY/3245/2020(2)	cattle	99.8	0	O	ME-SA	Ind-2001	e
viba_48069	MAY/3933/2020(3)	cattle	99.8	0	O	ME-SA	Ind-2001	e
viba_48041	MAY/3041/2020(1)	cattle	99.8	0	O	ME-SA	Ind-2001	e
viba_48085	MAY/4302/2020(1)	cattle	99.8	0	O	ME-SA	Ind-2001	e
viba_48053	MAY/3455/2020	cattle	99.7	0	O	ME-SA	Ind-2001	e
viba_48065	MAY/3966/2020	cattle	99.7	0	O	ME-SA	Ind-2001	e
viba_48057	MAY/3696/2020(1)	cattle	99.7	0	O	ME-SA	Ind-2001	e
viba_48101	MAY/4425/2020	cattle	99.5	0	O	ME-SA	Ind-2001	e

Most Closely Related Prototype Sequences

see <http://www.wrlfmd.org/fmdv-genome/fmd-prototype-strains>

sequence	virus name	Host	% Id.	# Ambig.	serotype	topotype	lineage	sublineage
viba_30238	MUR/19/2016	cattle	95.7	0	O	ME-SA	Ind-2001	e
viba_293	BHU/3/2009	cattle	93.8	0	O	ME-SA	Ind-2001	d
viba_541	OMN/7/2001	bovine	91.0	0	O	ME-SA	Ind-2001	b
viba_705	KUW/3/97	bovine	90.7	0	O	ME-SA	Ind-2001	a
viba_397	UAE/4/2008	gazelle	89.9	0	O	ME-SA	Ind-2001	c
viba_766	IRN/31/2009	cattle	88.3	0	O	ME-SA	PanAsia-2	FAR-09
viba_285	UKG/35/2001	porcine	88.0	0	O	ME-SA	PanAsia	
viba_650	IRN/8/2005	ovine	87.7	0	O	ME-SA	PanAsia-2	
viba_719	IRN/88/2009		87.5	0	O	ME-SA	PanAsia-2	ANT-10
viba_359	Manisa/TUR/69		87.2	0	O	ME-SA		

Virus sample name:	MAY/4425/2020
Sender reference:	4425/2020
Location of origin:	No. 140, Blok 6, Felda Raja Alias 4, 72120 Bandar Seri Jempol, Negeri Sembilan
Country of origin:	Malaysia
Date of collection:	24/12/2020
Host species:	cattle
Serotype:	O
Topotype:	ME-SA
Lineage:	Ind-2001
Sublineage:	e
Sequence length:	633
Ambiguities:	0
Material submitted for sequencing:	n/a
Harvest date of material:	n/a
Primers:	n/a
Received for sequencing:	n/a
Created:	07/06/2021
Last updated:	07/06/2021
VIBASys IDs: sample 48099, genome 48100, sequence viba_48101, sequencing info 48102	

Most Closely Related Sequences

sequence	virus name	Host	% Id.	# Ambig.	serotype	topotype	lineage	sublineage
viba_48065	MAY/3966/2020	cattle	99.8	0	O	ME-SA	Ind-2001	e
viba_48037	MAY/2081/2020	cattle	99.7	0	O	ME-SA	Ind-2001	e
viba_48073	MAY/4050/2020(2)	cattle	99.7	0	O	ME-SA	Ind-2001	e
viba_48045	MAY/3245/2020(2)	cattle	99.7	0	O	ME-SA	Ind-2001	e
viba_48069	MAY/3933/2020(3)	cattle	99.7	0	O	ME-SA	Ind-2001	e
viba_48041	MAY/3041/2020(1)	cattle	99.7	0	O	ME-SA	Ind-2001	e
viba_48085	MAY/4302/2020(1)	cattle	99.7	0	O	ME-SA	Ind-2001	e
viba_48033	MAY/1388/2020	cattle	99.5	0	O	ME-SA	Ind-2001	e
viba_48053	MAY/3455/2020	cattle	99.5	0	O	ME-SA	Ind-2001	e
viba_48081	MAY/4123/2020(2)	cattle	99.5	0	O	ME-SA	Ind-2001	e

Most Closely Related Prototype Sequences

see <http://www.wrlfmd.org/fmdv-genome/fmd-prototype-strains>

sequence	virus name	Host	% Id.	# Ambig.	serotype	topotype	lineage	sublineage
viba_30238	MUR/19/2016	cattle	95.4	0	O	ME-SA	Ind-2001	e
viba_293	BHU/3/2009	cattle	93.5	0	O	ME-SA	Ind-2001	d
viba_541	OMN/7/2001	bovine	90.7	0	O	ME-SA	Ind-2001	b
viba_705	KUW/3/97	bovine	90.4	0	O	ME-SA	Ind-2001	a
viba_397	UAE/4/2008	gazelle	89.6	0	O	ME-SA	Ind-2001	c
viba_766	IRN/31/2009	cattle	88.0	0	O	ME-SA	PanAsia-2	FAR-09
viba_285	UKG/35/2001	porcine	87.6	0	O	ME-SA	PanAsia	
viba_650	IRN/8/2005	ovine	87.4	0	O	ME-SA	PanAsia-2	
viba_359	Manisa/TUR/69		86.9	0	O	ME-SA		
viba_860	IRN/6/2015	cattle	86.9	0	O	ME-SA	PanAsia-2	QOM-15

Virus sample name:	MAY/4450/2020
Sender reference:	4450/2020
Location of origin:	Bt 22, Ldg Bukit Mertajam, 71150 Rembau, Negeri Sembilan
Country of origin:	Malaysia
Date of collection:	22/12/2020
Host species:	cattle
Serotype:	O
Topotype:	ME-SA
Lineage:	PanAsia
Sublineage:	
Sequence length:	633
Ambiguities:	0
Material submitted for sequencing:	n/a
Harvest date of material:	n/a
Primers:	n/a
Received for sequencing:	n/a
Created:	07/06/2021
Last updated:	07/06/2021
VIBASys IDs: sample 48095, genome 48096, sequence viba_48097, sequencing info 48098	

Most Closely Related Sequences

sequence	virus name	Host	% Id.	# Ambig.	serotype	topotype	lineage	sublineage
viba_37707	LAO/1/2018	cattle	97.9	0	O	ME-SA	PanAsia	
viba_40576	VIT/3/2018	cattle	97.9	0	O	ME-SA	PanAsia	
viba_36481	VIT/29/2017	bovine	97.8	0	O	ME-SA	PanAsia	
viba_35454	BaTri/VIT/17-19372	cattle	97.8	0	O	ME-SA	PanAsia	
viba_36461	VIT/18/2017	bovine	97.8	0	O	ME-SA	PanAsia	
viba_37668	TAI/12/2017	cattle	97.8	0	O	ME-SA	PanAsia	
viba_36497	VIT/1/2018	bovine	97.8	0	O	ME-SA	PanAsia	
viba_40604	VIT/11/2018	cattle	97.5	0	O	ME-SA	PanAsia	
viba_36493	VIT/32/2017	bovine	97.5	0	O	ME-SA	PanAsia	
viba_37680	TAI/16/2017	cattle	97.5	0	O	ME-SA	PanAsia	

Most Closely Related Prototype Sequences

see <http://www.wrlfmd.org/fmdv-genome/fmd-prototype-strains>

sequence	virus name	Host	% Id.	# Ambig.	serotype	topotype	lineage	sublineage
viba_285	UKG/35/2001	porcine	91.0	0	O	ME-SA	PanAsia	
viba_705	KUW/3/97	bovine	90.8	0	O	ME-SA	Ind-2001	a
viba_541	OMN/7/2001	bovine	90.2	0	O	ME-SA	Ind-2001	b
viba_293	BHU/3/2009	cattle	90.2	0	O	ME-SA	Ind-2001	d
viba_30238	MUR/19/2016	cattle	89.9	0	O	ME-SA	Ind-2001	e
viba_359	Manisa/TUR/69		89.6	0	O	ME-SA		
viba_650	IRN/8/2005	ovine	89.4	0	O	ME-SA	PanAsia-2	
viba_860	IRN/6/2015	cattle	89.4	0	O	ME-SA	PanAsia-2	QOM-15
viba_397	UAE/4/2008	gazelle	89.3	0	O	ME-SA	Ind-2001	c
viba_666	IRN/18/2010	cattle	89.1	0	O	ME-SA	PanAsia-2	BAL-09

Virus sample name:	MAY/946/2021
Sender reference:	946/2021
Location of origin:	Kg. Sepri, Pedas, Rembau, Negeri Sembilan
Country of origin:	Malaysia
Date of collection:	01/04/2021
Host species:	cattle
Serotype:	O
Topotype:	ME-SA
Lineage:	Ind-2001
Sublineage:	e
Sequence length:	633
Ambiguities:	0
Material submitted for sequencing:	n/a
Harvest date of material:	n/a
Primers:	n/a
Received for sequencing:	n/a
Created:	07/06/2021
Last updated:	07/06/2021

VIBASys IDs: sample 48115, genome 48116, sequence viba_48117, sequencing info 48118

Most Closely Related Sequences

sequence	virus name	Host	% Id.	# Ambig.	serotype	topotype	lineage	sublineage
viba_48049	MAY/3457/2020(5)	cattle	100.0	0	O	ME-SA	Ind-2001	e
viba_44991	VIT/29/2019	water buffalo	99.5	0	O	ME-SA	Ind-2001	e
viba_47340	TAI/10/2020	cattle	99.5	0	O	ME-SA	Ind-2001	e
viba_47295	LAO/4/2020	cattle	99.5	0	O	ME-SA	Ind-2001	e
viba_45022	VIT/7/2020	porcine	99.5	0	O	ME-SA	Ind-2001	e
viba_48005	MAY/35/2020(2)	cattle	99.5	0	O	ME-SA	Ind-2001	e
viba_44983	VIT/27/2019	cattle	99.5	0	O	ME-SA	Ind-2001	e
viba_44979	VIT/25/2019	porcine	99.5	0	O	ME-SA	Ind-2001	e
viba_47316	TAI/4/2020	cattle	99.5	0	O	ME-SA	Ind-2001	e
viba_44975	VIT/20/2019	water buffalo	99.5	0	O	ME-SA	Ind-2001	e

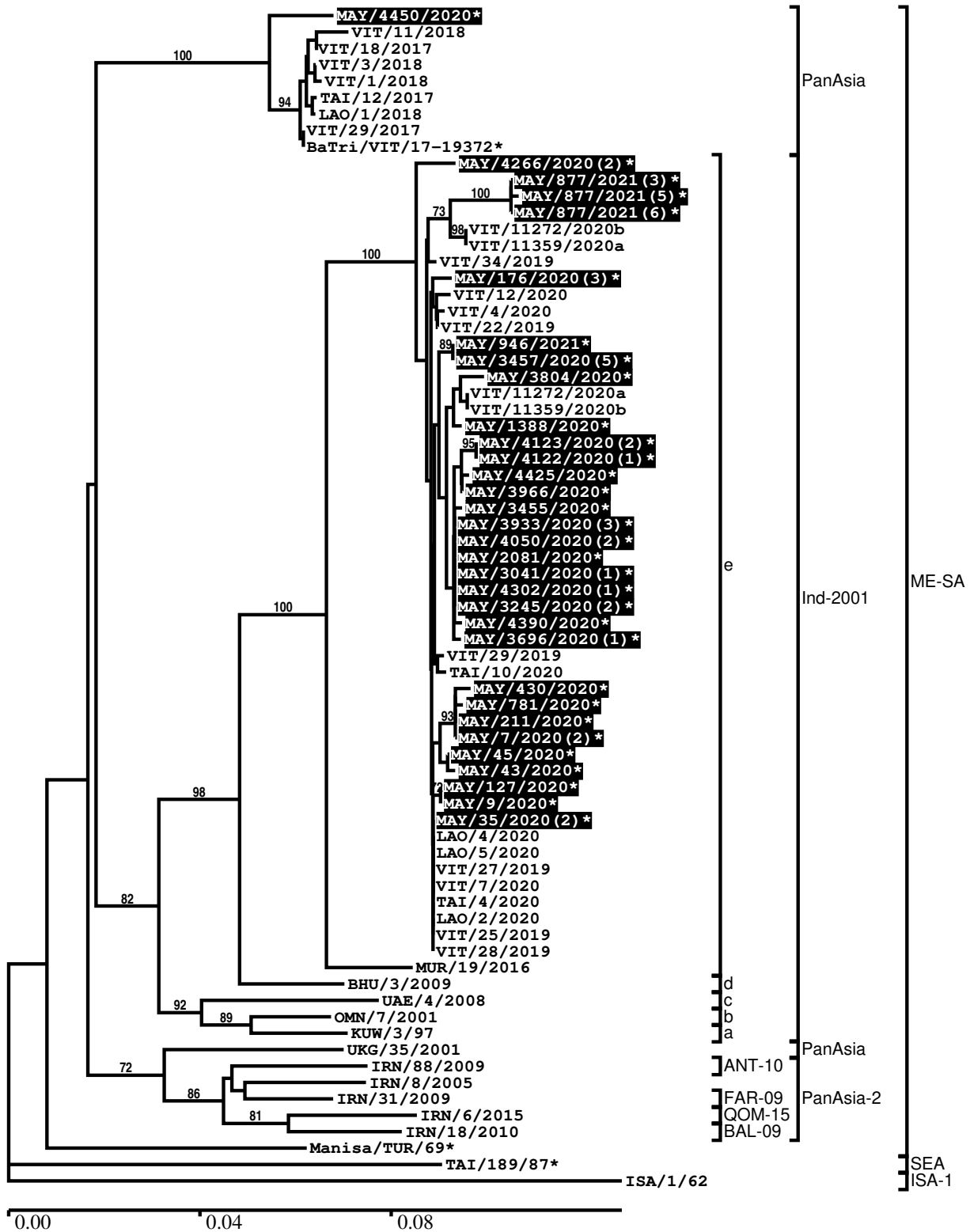
Most Closely Related Prototype Sequences

see <http://www.wrlfmd.org/fmdv-genome/fmd-prototype-strains>

sequence	virus name	Host	% Id.	# Ambig.	serotype	topotype	lineage	sublineage
viba_30238	MUR/19/2016	cattle	95.6	0	O	ME-SA	Ind-2001	e
viba_293	BHU/3/2009	cattle	93.5	0	O	ME-SA	Ind-2001	d
viba_541	OMN/7/2001	bovine	90.7	0	O	ME-SA	Ind-2001	b
viba_705	KUW/3/97	bovine	90.4	0	O	ME-SA	Ind-2001	a
viba_397	UAE/4/2008	gazelle	89.4	0	O	ME-SA	Ind-2001	c
viba_766	IRN/31/2009	cattle	88.3	0	O	ME-SA	PanAsia-2	FAR-09
viba_285	UKG/35/2001	porcine	88.0	0	O	ME-SA	PanAsia	
viba_719	IRN/88/2009		87.8	0	O	ME-SA	PanAsia-2	ANT-10
viba_650	IRN/8/2005	ovine	87.7	0	O	ME-SA	PanAsia-2	
viba_359	Manisa/TUR/69		87.5	0	O	ME-SA		

Report on FMDV O in Malaysia in 2020, 2021

Batch: WRLMEG/2021/00009



*, not a WRLFMD Reference Number

Analysis Parameters

VP1 subsequence extractor:	vp1_O
Query sequence set:	WRLMEG/2021/00009-Malaysia-O (32 sequences)
Sequence database set:	allseqs_O (5215 sequences)
Prototype sequence set:	!prototypes_O (49 sequences)
Number of related sequences reported:	10
Minimal VP1 subsequence match length	600
Sequence alignment method:	muscle (default parameters)
Sequence alignment length:	636
Phylogeny reconstruction method:	fdnadist, fneighbor
Number of bootstrap samples:	1000
Random seed for bootstrapping:	1
Displaying bootstrap values above:	70.0%
Number of sequences in tree capped at:	100
Number of prototype sequences in tree:	12
VIBASys version:	reflabs-1.1.2

Sequences in the Phylogenetic Tree

All sequences in the tree are in taxonomic group FMDV/O

label	accession	host(s)	lab	country	taxonomic information
MAY/4450/2020*	n/a	cattle	MNFMDL	Malaysia	ME-SA/PanAsia
VIT/11/2018	n/a	cattle	WRLFMD	Vietnam	ME-SA/PanAsia
VIT/18/2017	n/a	bovine	WRLFMD	Vietnam	ME-SA/PanAsia
VIT/3/2018	n/a	cattle	WRLFMD	Vietnam	ME-SA/PanAsia
VIT/1/2018	n/a	bovine	WRLFMD	Vietnam	ME-SA/PanAsia
TAI/12/2017	n/a	cattle	WRLFMD	Thailand	ME-SA/PanAsia
LAO/1/2018	n/a	cattle	WRLFMD	Laos	ME-SA/PanAsia
VIT/29/2017	n/a	bovine	WRLFMD	Vietnam	ME-SA/PanAsia
BaTri/VIT/17-19372*	n/a	cattle	RAHO6	Vietnam	ME-SA/PanAsia
MAY/4266/2020(2)*	n/a	cattle	MNFMDL	Malaysia	ME-SA/Ind-2001/e
MAY/877/2021(3)*	n/a	cattle	MNFMDL	Malaysia	ME-SA/Ind-2001/e
MAY/877/2021(5)*	n/a	cattle	MNFMDL	Malaysia	ME-SA/Ind-2001/e
MAY/877/2021(6)*	n/a	cattle	MNFMDL	Malaysia	ME-SA/Ind-2001/e
VIT/11272/2020b	n/a	porcine	RAHO6	Vietnam	ME-SA/Ind-2001/e
VIT/11359/2020a	n/a	cattle	RAHO6	Vietnam	ME-SA/Ind-2001/e
VIT/34/2019	n/a	cattle	WRLFMD	Vietnam	ME-SA/Ind-2001/e
MAY/176/2020(3)*	n/a	cattle	MNFMDL	Malaysia	ME-SA/Ind-2001/e
VIT/12/2020	n/a	cattle	WRLFMD	Vietnam	ME-SA/Ind-2001/e
VIT/4/2020	n/a	cattle	WRLFMD	Vietnam	ME-SA/Ind-2001/e
VIT/22/2019	n/a	cattle	WRLFMD	Vietnam	ME-SA/Ind-2001/e
MAY/946/2021*	n/a	cattle	MNFMDL	Malaysia	ME-SA/Ind-2001/e
MAY/3457/2020(5)*	n/a	cattle	MNFMDL	Malaysia	ME-SA/Ind-2001/e
MAY/3804/2020*	n/a	cattle	MNFMDL	Malaysia	ME-SA/Ind-2001/e
VIT/11272/2020a	n/a	porcine	RAHO6	Vietnam	ME-SA/Ind-2001/e
VIT/11359/2020b	n/a	cattle	RAHO6	Vietnam	ME-SA/Ind-2001/e
MAY/1388/2020*	n/a	cattle	MNFMDL	Malaysia	ME-SA/Ind-2001/e
MAY/4123/2020(2)*	n/a	cattle	MNFMDL	Malaysia	ME-SA/Ind-2001/e
MAY/4122/2020(1)*	n/a	cattle	MNFMDL	Malaysia	ME-SA/Ind-2001/e
MAY/4425/2020*	n/a	cattle	MNFMDL	Malaysia	ME-SA/Ind-2001/e
MAY/3966/2020*	n/a	cattle	MNFMDL	Malaysia	ME-SA/Ind-2001/e
MAY/3455/2020*	n/a	cattle	MNFMDL	Malaysia	ME-SA/Ind-2001/e
MAY/3933/2020(3)*	n/a	cattle	MNFMDL	Malaysia	ME-SA/Ind-2001/e
MAY/4050/2020(2)*	n/a	cattle	MNFMDL	Malaysia	ME-SA/Ind-2001/e
MAY/2081/2020*	n/a	cattle	MNFMDL	Malaysia	ME-SA/Ind-2001/e
MAY/3041/2020(1)*	n/a	cattle	MNFMDL	Malaysia	ME-SA/Ind-2001/e
MAY/4302/2020(1)*	n/a	cattle	MNFMDL	Malaysia	ME-SA/Ind-2001/e

continued on next page

label	accession	host(s)	lab	country	taxonomic information
MAY/3245/2020(2)*	n/a	cattle	MNFMDL	Malaysia	ME-SA/Ind-2001/e
MAY/4390/2020*	n/a	cattle	MNFMDL	Malaysia	ME-SA/Ind-2001/e
MAY/3696/2020(1)*	n/a	cattle	MNFMDL	Malaysia	ME-SA/Ind-2001/e
VIT/29/2019	n/a	water buffalo	WRLFMD	Vietnam	ME-SA/Ind-2001/e
TAI/10/2020	n/a	cattle	WRLFMD	Thailand	ME-SA/Ind-2001/e
MAY/430/2020*	n/a	cattle	MNFMDL	Malaysia	ME-SA/Ind-2001/e
MAY/781/2020*	n/a	cattle	MNFMDL	Malaysia	ME-SA/Ind-2001/e
MAY/211/2020*	n/a	cattle	MNFMDL	Malaysia	ME-SA/Ind-2001/e
MAY/7/2020(2)*	n/a	cattle	MNFMDL	Malaysia	ME-SA/Ind-2001/e
MAY/45/2020*	n/a	cattle	MNFMDL	Malaysia	ME-SA/Ind-2001/e
MAY/43/2020*	n/a	cattle	MNFMDL	Malaysia	ME-SA/Ind-2001/e
MAY/127/2020*	n/a	cattle	MNFMDL	Malaysia	ME-SA/Ind-2001/e
MAY/9/2020*	n/a	cattle	MNFMDL	Malaysia	ME-SA/Ind-2001/e
MAY/35/2020(2)*	n/a	cattle	MNFMDL	Malaysia	ME-SA/Ind-2001/e
LAO/4/2020	n/a	cattle	WRLFMD	Laos	ME-SA/Ind-2001/e
LAO/5/2020	n/a	cattle	WRLFMD	Laos	ME-SA/Ind-2001/e
VIT/27/2019	n/a	cattle	WRLFMD	Vietnam	ME-SA/Ind-2001/e
VIT/7/2020	n/a	porcine	WRLFMD	Vietnam	ME-SA/Ind-2001/e
TAI/4/2020	n/a	cattle	WRLFMD	Thailand	ME-SA/Ind-2001/e
LAO/2/2020	n/a	cattle	WRLFMD	Laos	ME-SA/Ind-2001/e
VIT/25/2019	n/a	porcine	WRLFMD	Vietnam	ME-SA/Ind-2001/e
VIT/28/2019	n/a	water buffalo	WRLFMD	Vietnam	ME-SA/Ind-2001/e
MUR/19/2016	MG972510	cattle	WRLFMD	Mauritius	ME-SA/Ind-2001/e
BHU/3/2009	KM921814	cattle	WRLFMD	Bhutan	ME-SA/Ind-2001/d
UAE/4/2008	KM921876	gazelle	WRLFMD	United Arab Emirates	ME-SA/Ind-2001/c
OMN/7/2001	DQ164941	bovine	WRLFMD	Oman	ME-SA/Ind-2001/b
KUW/3/97	DQ164904	bovine	WRLFMD	Kuwait	ME-SA/Ind-2001/a
UKG/35/2001	AJ539141	porcine	PIADC	United Kingdom	ME-SA/PanAsia
IRN/88/2009	KY091282	n/a	WRLFMD	Iran	ME-SA/PanAsia-2/ANT-10
IRN/8/2005	KY091281	ovine	WRLFMD	Iran	ME-SA/PanAsia-2
IRN/31/2009	KY091284	cattle	WRLFMD	Iran	ME-SA/PanAsia-2/FAR-09
IRN/6/2015	MN276044	cattle	WRLFMD	Iran	ME-SA/PanAsia-2/QOM-15
IRN/18/2010	KY091283	cattle	WRLFMD	Iran	ME-SA/PanAsia-2/BAL-09
Manisa/TUR/69*	AY593823	n/a	PIADC	Turkey	ME-SA
TAI/189/87*	KY091288	bovine	TRRL	Thailand	SEA
ISA/1/62	AJ303500	n/a	WRLFMD	Indonesia	ISA-1

*, not a WRLFMD Reference Number

n/a, not available