

FAO World Reference Laboratory for Foot-and-Mouth Disease (WRLFMD)

Genotyping Report

FMDV serotype: O
Country: Nigeria
Year: 2020
Batch: WRLMEG/2021/00019
No. of sequences: 55
Report date: 23rd December 2021
Report generated by: Nick Knowles
Report checked by: Don King

This report has been prepared on behalf of the National Centre for Foreign Animal Disease (NCFAD), Canadian Food Inspection Agency (CFIA), Winnipeg, Manitoba, Canada and the National Veterinary Research Institute (NVRI), Vom, Nigeria and covers VP1 sequences (extracted from whole genome sequences) submitted to the WRLFMD on 11/12/2021. This report supersedes that of a previous batch (WRLMEG/2021/00017) which included some of the same sequences.



Copyright © 2021 The Pirbright Institute, Ash Road, Pirbright, Woking GU24 0NF, United Kingdom.

www: <http://www.wrlfmd.org/>

email: reporting@pirbright.ac.uk

The contents of this report should not be reproduced without permission.

Virus sample name:	BAU/TR/01/NIG/2020
Sender reference:	BAU/TR/01
Location of origin:	Toro, Bauchi State
Country of origin:	Nigeria
Date of collection:	04/09/2020
Host species:	cattle
Serotype:	O
Topotype:	EA-3
Lineage:	
Sublineage:	
Sequence length:	633
Ambiguities:	0
Material submitted for sequencing:	n/a
Harvest date of material:	n/a
Primers:	n/a
Received for sequencing:	n/a
Created:	22/12/2021
Last updated:	22/12/2021
VIBASys IDs: sample 49721, genome 49722, sequence viba_49723, sequencing info 49724	

Most Closely Related Sequences

sequence	virus name	Host	% Id.	# Ambig.	serotype	topotype	lineage	sublineage
viba_49523	NIG/88/2020	cattle	99.8	0	O	EA-3		
viba_49891	PL/JN/021/NIG/2020	cattle	99.7	0	O	EA-3		
viba_49911	PL/JN/026/NIG/2020	cattle	99.7	0	O	EA-3		
viba_49511	NIG/77/2020	cattle	99.7	0	O	EA-3		
viba_49919	PL/JN/028/NIG/2020	cattle	99.7	0	O	EA-3		
viba_49499	NIG/73/2020	cattle	99.7	0	O	EA-3		
viba_49515	NIG/78/2020	sheep	99.7	0	O	EA-3		
viba_49915	PL/JN/027/NIG/2020	cattle	99.7	0	O	EA-3		
viba_49895	PL/JN/022/NIG/2020	cattle	99.7	0	O	EA-3		
viba_49503	NIG/74/2020	cattle	99.7	0	O	EA-3		

Most Closely Related Prototype Sequences

see <http://www.wrlfmd.org/fmdv-genome/fmd-prototype-strains>

sequence	virus name	Host	% Id.	# Ambig.	serotype	topotype	lineage	sublineage
viba_116	SUD/2/86	bovine	89.0	0	O	EA-3		
viba_854	ETH/1/2007	cattle	85.8	0	O	EA-3		
viba_50	UGA/17/98		85.3	0	O	EA-4		
viba_408	ETH/3/2004	cattle	84.6	0	O	EA-3		
viba_104	GHA/5/93	bovine	84.4	0	O	WA		
viba_85	UGA/3/2002		84.0	0	O	EA-2		
viba_30238	MUR/19/2016	cattle	84.0	0	O	ME-SA	Ind-2001	e
viba_523	K83/79		83.9	0	O	EA-1		
viba_285	UKG/35/2001	porcine	83.7	0	O	ME-SA	PanAsia	
viba_68	TAI/189/87	bovine	83.6	0	O	SEA		

Virus sample name:	KN/KN/01/NIG/2020
Sender reference:	KN/KN/01
Location of origin:	Kano, Kano State
Country of origin:	Nigeria
Date of collection:	05/09/2020
Host species:	cattle
Serotype:	O
Topotype:	EA-3
Lineage:	
Sublineage:	
Sequence length:	633
Ambiguities:	0
Material submitted for sequencing:	n/a
Harvest date of material:	n/a
Primers:	n/a
Received for sequencing:	n/a
Created:	22/12/2021
Last updated:	22/12/2021
VIBASys IDs: sample 49725, genome 49726, sequence viba_49727, sequencing info 49728	

Most Closely Related Sequences

sequence	virus name	Host	% Id.	# Ambig.	serotype	topotype	lineage	sublineage
viba_49731	KN/KN/02/NIG/2020	cattle	100.0	0	O	EA-3		
viba_49739	KT/KT/02/NIG/2020	cattle	100.0	0	O	EA-3		
viba_49759	KD/KD/05/NIG/2020	cattle	100.0	0	O	EA-3		
viba_49751	KD/KD/02/NIG/2020	cattle	99.8	0	O	EA-3		
viba_49523	NIG/88/2020	cattle	99.7	0	O	EA-3		
viba_49755	KD/KD/03/NIG/2020	cattle	99.7	0	O	EA-3		
viba_49743	KT/KT/03/NIG/2020	cattle	99.7	0	O	EA-3		
viba_49735	KT/KT/01/NIG/2020	cattle	99.5	0	O	EA-3		
viba_49891	PL/JN/021/NIG/2020	cattle	99.5	0	O	EA-3		
viba_49911	PL/JN/026/NIG/2020	cattle	99.5	0	O	EA-3		

Most Closely Related Prototype Sequences

see <http://www.wrlfmd.org/fmdv-genome/fmd-prototype-strains>

sequence	virus name	Host	% Id.	# Ambig.	serotype	topotype	lineage	sublineage
viba_116	SUD/2/86	bovine	88.5	0	O	EA-3		
viba_854	ETH/1/2007	cattle	85.3	0	O	EA-3		
viba_50	UGA/17/98		84.9	0	O	EA-4		
viba_408	ETH/3/2004	cattle	84.1	0	O	EA-3		
viba_104	GHA/5/93	bovine	83.9	0	O	WA		
viba_285	UKG/35/2001	porcine	83.6	0	O	ME-SA	PanAsia	
viba_85	UGA/3/2002		83.6	0	O	EA-2		
viba_68	TAI/189/87	bovine	83.5	0	O	SEA		
viba_30238	MUR/19/2016	cattle	83.5	0	O	ME-SA	Ind-2001	e
viba_523	K83/79		83.4	0	O	EA-1		

Virus sample name:	KN/KN/02/NIG/2020
Sender reference:	KN/KN/02
Location of origin:	Kano, Kano State
Country of origin:	Nigeria
Date of collection:	05/09/2020
Host species:	cattle
Serotype:	O
Topotype:	EA-3
Lineage:	
Sublineage:	
Sequence length:	633
Ambiguities:	0
Material submitted for sequencing:	n/a
Harvest date of material:	n/a
Primers:	n/a
Received for sequencing:	n/a
Created:	22/12/2021
Last updated:	22/12/2021
VIBASys IDs: sample 49729, genome 49730, sequence viba_49731, sequencing info 49732	

Most Closely Related Sequences

sequence	virus name	Host	% Id.	# Ambig.	serotype	topotype	lineage	sublineage
viba_49739	KT/KT/02/NIG/2020	cattle	100.0	0	O	EA-3		
viba_49727	KN/KN/01/NIG/2020	cattle	100.0	0	O	EA-3		
viba_49759	KD/KD/05/NIG/2020	cattle	100.0	0	O	EA-3		
viba_49751	KD/KD/02/NIG/2020	cattle	99.8	0	O	EA-3		
viba_49523	NIG/88/2020	cattle	99.7	0	O	EA-3		
viba_49755	KD/KD/03/NIG/2020	cattle	99.7	0	O	EA-3		
viba_49743	KT/KT/03/NIG/2020	cattle	99.7	0	O	EA-3		
viba_49735	KT/KT/01/NIG/2020	cattle	99.5	0	O	EA-3		
viba_49891	PL/JN/021/NIG/2020	cattle	99.5	0	O	EA-3		
viba_49911	PL/JN/026/NIG/2020	cattle	99.5	0	O	EA-3		

Most Closely Related Prototype Sequences

see <http://www.wrlfmd.org/fmdv-genome/fmd-prototype-strains>

sequence	virus name	Host	% Id.	# Ambig.	serotype	topotype	lineage	sublineage
viba_116	SUD/2/86	bovine	88.5	0	O	EA-3		
viba_854	ETH/1/2007	cattle	85.3	0	O	EA-3		
viba_50	UGA/17/98		84.9	0	O	EA-4		
viba_408	ETH/3/2004	cattle	84.1	0	O	EA-3		
viba_104	GHA/5/93	bovine	83.9	0	O	WA		
viba_285	UKG/35/2001	porcine	83.6	0	O	ME-SA	PanAsia	
viba_85	UGA/3/2002		83.6	0	O	EA-2		
viba_68	TAI/189/87	bovine	83.5	0	O	SEA		
viba_30238	MUR/19/2016	cattle	83.5	0	O	ME-SA	Ind-2001	e
viba_523	K83/79		83.4	0	O	EA-1		

Virus sample name:	KT/KT/01/NIG/2020
Sender reference:	KT/KT/01
Location of origin:	Katsina, Katsina State
Country of origin:	Nigeria
Date of collection:	05/09/2020
Host species:	cattle
Serotype:	O
Topotype:	EA-3
Lineage:	
Sublineage:	
Sequence length:	633
Ambiguities:	0
Material submitted for sequencing:	n/a
Harvest date of material:	n/a
Primers:	n/a
Received for sequencing:	n/a
Created:	22/12/2021
Last updated:	22/12/2021
VIBASys IDs: sample 49733, genome 49734, sequence viba_49735, sequencing info 49736	

Most Closely Related Sequences

sequence	virus name	Host	% Id.	# Ambig.	serotype	topotype	lineage	sublineage
viba_49755	KD/KD/03/NIG/2020	cattle	99.8	0	O	EA-3		
viba_49743	KT/KT/03/NIG/2020	cattle	99.8	0	O	EA-3		
viba_49731	KN/KN/02/NIG/2020	cattle	99.5	0	O	EA-3		
viba_49739	KT/KT/02/NIG/2020	cattle	99.5	0	O	EA-3		
viba_49727	KN/KN/01/NIG/2020	cattle	99.5	0	O	EA-3		
viba_49759	KD/KD/05/NIG/2020	cattle	99.5	0	O	EA-3		
viba_49511	NIG/77/2020	cattle	99.4	0	O	EA-3		
viba_49499	NIG/73/2020	cattle	99.4	0	O	EA-3		
viba_49515	NIG/78/2020	sheep	99.4	0	O	EA-3		
viba_49503	NIG/74/2020	cattle	99.4	0	O	EA-3		

Most Closely Related Prototype Sequences

see <http://www.wrlfmd.org/fmdv-genome/fmd-prototype-strains>

sequence	virus name	Host	% Id.	# Ambig.	serotype	topotype	lineage	sublineage
viba_116	SUD/2/86	bovine	88.0	0	O	EA-3		
viba_854	ETH/1/2007	cattle	84.9	0	O	EA-3		
viba_50	UGA/17/98		84.7	0	O	EA-4		
viba_104	GHA/5/93	bovine	84.1	0	O	WA		
viba_30238	MUR/19/2016	cattle	83.7	0	O	ME-SA	Ind-2001	e
viba_408	ETH/3/2004	cattle	83.7	0	O	EA-3		
viba_523	K83/79		83.3	0	O	EA-1		
viba_85	UGA/3/2002		83.3	0	O	EA-2		
viba_766	IRN/31/2009	cattle	83.3	0	O	ME-SA	PanAsia-2	FAR-09
viba_285	UKG/35/2001	porcine	83.1	0	O	ME-SA	PanAsia	

Virus sample name:	KT/KT/02/NIG/2020
Sender reference:	KT/KT/02
Location of origin:	Katsina, Katsina State
Country of origin:	Nigeria
Date of collection:	05/09/2020
Host species:	cattle
Serotype:	O
Topotype:	EA-3
Lineage:	
Sublineage:	
Sequence length:	633
Ambiguities:	0
Material submitted for sequencing:	n/a
Harvest date of material:	n/a
Primers:	n/a
Received for sequencing:	n/a
Created:	22/12/2021
Last updated:	22/12/2021
VIBASys IDs: sample 49737, genome 49738, sequence viba_49739, sequencing info 49740	

Most Closely Related Sequences

sequence	virus name	Host	% Id.	# Ambig.	serotype	topotype	lineage	sublineage
viba_49731	KN/KN/02/NIG/2020	cattle	100.0	0	O	EA-3		
viba_49727	KN/KN/01/NIG/2020	cattle	100.0	0	O	EA-3		
viba_49759	KD/KD/05/NIG/2020	cattle	100.0	0	O	EA-3		
viba_49751	KD/KD/02/NIG/2020	cattle	99.8	0	O	EA-3		
viba_49523	NIG/88/2020	cattle	99.7	0	O	EA-3		
viba_49755	KD/KD/03/NIG/2020	cattle	99.7	0	O	EA-3		
viba_49743	KT/KT/03/NIG/2020	cattle	99.7	0	O	EA-3		
viba_49735	KT/KT/01/NIG/2020	cattle	99.5	0	O	EA-3		
viba_49891	PL/JN/021/NIG/2020	cattle	99.5	0	O	EA-3		
viba_49911	PL/JN/026/NIG/2020	cattle	99.5	0	O	EA-3		

Most Closely Related Prototype Sequences

see <http://www.wrlfmd.org/fmdv-genome/fmd-prototype-strains>

sequence	virus name	Host	% Id.	# Ambig.	serotype	topotype	lineage	sublineage
viba_116	SUD/2/86	bovine	88.5	0	O	EA-3		
viba_854	ETH/1/2007	cattle	85.3	0	O	EA-3		
viba_50	UGA/17/98		84.9	0	O	EA-4		
viba_408	ETH/3/2004	cattle	84.1	0	O	EA-3		
viba_104	GHA/5/93	bovine	83.9	0	O	WA		
viba_285	UKG/35/2001	porcine	83.6	0	O	ME-SA	PanAsia	
viba_85	UGA/3/2002		83.6	0	O	EA-2		
viba_68	TAI/189/87	bovine	83.5	0	O	SEA		
viba_30238	MUR/19/2016	cattle	83.5	0	O	ME-SA	Ind-2001	e
viba_523	K83/79		83.4	0	O	EA-1		

Virus sample name:	KT/KT/03/NIG/2020
Sender reference:	KT/KT/03
Location of origin:	Katsina, Katsina State
Country of origin:	Nigeria
Date of collection:	05/09/2020
Host species:	cattle
Serotype:	O
Topotype:	EA-3
Lineage:	
Sublineage:	
Sequence length:	633
Ambiguities:	0
Material submitted for sequencing:	n/a
Harvest date of material:	n/a
Primers:	n/a
Received for sequencing:	n/a
Created:	22/12/2021
Last updated:	22/12/2021
VIBASys IDs: sample 49741, genome 49742, sequence viba_49743, sequencing info 49744	

Most Closely Related Sequences

sequence	virus name	Host	% Id.	# Ambig.	serotype	topotype	lineage	sublineage
viba_49755	KD/KD/03/NIG/2020	cattle	100.0	0	O	EA-3		
viba_49735	KT/KT/01/NIG/2020	cattle	99.8	0	O	EA-3		
viba_49731	KN/KN/02/NIG/2020	cattle	99.7	0	O	EA-3		
viba_49739	KT/KT/02/NIG/2020	cattle	99.7	0	O	EA-3		
viba_49727	KN/KN/01/NIG/2020	cattle	99.7	0	O	EA-3		
viba_49759	KD/KD/05/NIG/2020	cattle	99.7	0	O	EA-3		
viba_49751	KD/KD/02/NIG/2020	cattle	99.5	0	O	EA-3		
viba_49523	NIG/88/2020	cattle	99.4	0	O	EA-3		
viba_49891	PL/JN/021/NIG/2020	cattle	99.2	0	O	EA-3		
viba_49911	PL/JN/026/NIG/2020	cattle	99.2	0	O	EA-3		

Most Closely Related Prototype Sequences

see <http://www.wrlfmd.org/fmdv-genome/fmd-prototype-strains>

sequence	virus name	Host	% Id.	# Ambig.	serotype	topotype	lineage	sublineage
viba_116	SUD/2/86	bovine	88.2	0	O	EA-3		
viba_854	ETH/1/2007	cattle	85.0	0	O	EA-3		
viba_50	UGA/17/98		84.6	0	O	EA-4		
viba_104	GHA/5/93	bovine	83.9	0	O	WA		
viba_408	ETH/3/2004	cattle	83.8	0	O	EA-3		
viba_30238	MUR/19/2016	cattle	83.5	0	O	ME-SA	Ind-2001	e
viba_523	K83/79		83.4	0	O	EA-1		
viba_85	UGA/3/2002		83.4	0	O	EA-2		
viba_766	IRN/31/2009	cattle	83.4	0	O	ME-SA	PanAsia-2	FAR-09
viba_285	UKG/35/2001	porcine	83.3	0	O	ME-SA	PanAsia	

Virus sample name:	KD/KD/01/NIG/2020
Sender reference:	KD/KD/01
Location of origin:	Kaduna, Kaduna State
Country of origin:	Nigeria
Date of collection:	08/09/2020
Host species:	cattle
Serotype:	O
Topotype:	EA-3
Lineage:	
Sublineage:	
Sequence length:	630
Ambiguities:	0
Material submitted for sequencing:	n/a
Harvest date of material:	n/a
Primers:	n/a
Received for sequencing:	n/a
Created:	22/12/2021
Last updated:	22/12/2021
VIBASys IDs: sample 49745, genome 49746, sequence viba_49747, sequencing info 49748	

Most Closely Related Sequences

sequence	virus name	Host	% Id.	# Ambig.	serotype	topotype	lineage	sublineage
viba_49731	KN/KN/02/NIG/2020	cattle	99.5	0	O	EA-3		
viba_49739	KT/KT/02/NIG/2020	cattle	99.5	0	O	EA-3		
viba_49727	KN/KN/01/NIG/2020	cattle	99.5	0	O	EA-3		
viba_49759	KD/KD/05/NIG/2020	cattle	99.5	0	O	EA-3		
viba_49751	KD/KD/02/NIG/2020	cattle	99.4	0	O	EA-3		
viba_49523	NIG/88/2020	cattle	99.2	0	O	EA-3		
viba_49755	KD/KD/03/NIG/2020	cattle	99.2	0	O	EA-3		
viba_49743	KT/KT/03/NIG/2020	cattle	99.2	0	O	EA-3		
viba_49735	KT/KT/01/NIG/2020	cattle	99.1	0	O	EA-3		
viba_49891	PL/JN/021/NIG/2020	cattle	99.1	0	O	EA-3		

Most Closely Related Prototype Sequences

see <http://www.wrlfmd.org/fmdv-genome/fmd-prototype-strains>

sequence	virus name	Host	% Id.	# Ambig.	serotype	topotype	lineage	sublineage
viba_116	SUD/2/86	bovine	88.0	0	O	EA-3		
viba_854	ETH/1/2007	cattle	84.9	0	O	EA-3		
viba_50	UGA/17/98		84.4	0	O	EA-4		
viba_408	ETH/3/2004	cattle	83.7	0	O	EA-3		
viba_104	GHA/5/93	bovine	83.4	0	O	WA		
viba_30238	MUR/19/2016	cattle	83.2	0	O	ME-SA	Ind-2001	e
viba_285	UKG/35/2001	porcine	83.1	0	O	ME-SA	PanAsia	
viba_85	UGA/3/2002		83.1	0	O	EA-2		
viba_68	TAI/189/87	bovine	83.0	0	O	SEA		
viba_576	IND/R2/75		83.0	0	O	ME-SA		

Virus sample name:	KD/KD/02/NIG/2020
Sender reference:	KD/KD/02
Location of origin:	Kaduna, Kaduna State
Country of origin:	Nigeria
Date of collection:	08/09/2020
Host species:	cattle
Serotype:	O
Topotype:	EA-3
Lineage:	
Sublineage:	
Sequence length:	633
Ambiguities:	0
Material submitted for sequencing:	n/a
Harvest date of material:	n/a
Primers:	n/a
Received for sequencing:	n/a
Created:	22/12/2021
Last updated:	22/12/2021
VIBASys IDs: sample 49749, genome 49750, sequence viba_49751, sequencing info 49752	

Most Closely Related Sequences

sequence	virus name	Host	% Id.	# Ambig.	serotype	topotype	lineage	sublineage
viba_49731	KN/KN/02/NIG/2020	cattle	99.8	0	O	EA-3		
viba_49739	KT/KT/02/NIG/2020	cattle	99.8	0	O	EA-3		
viba_49727	KN/KN/01/NIG/2020	cattle	99.8	0	O	EA-3		
viba_49759	KD/KD/05/NIG/2020	cattle	99.8	0	O	EA-3		
viba_49523	NIG/88/2020	cattle	99.5	0	O	EA-3		
viba_49755	KD/KD/03/NIG/2020	cattle	99.5	0	O	EA-3		
viba_49743	KT/KT/03/NIG/2020	cattle	99.5	0	O	EA-3		
viba_49735	KT/KT/01/NIG/2020	cattle	99.4	0	O	EA-3		
viba_49891	PL/JN/021/NIG/2020	cattle	99.4	0	O	EA-3		
viba_49911	PL/JN/026/NIG/2020	cattle	99.4	0	O	EA-3		

Most Closely Related Prototype Sequences

see <http://www.wrlfmd.org/fmdv-genome/fmd-prototype-strains>

sequence	virus name	Host	% Id.	# Ambig.	serotype	topotype	lineage	sublineage
viba_116	SUD/2/86	bovine	88.3	0	O	EA-3		
viba_854	ETH/1/2007	cattle	85.2	0	O	EA-3		
viba_50	UGA/17/98		84.7	0	O	EA-4		
viba_408	ETH/3/2004	cattle	84.0	0	O	EA-3		
viba_104	GHA/5/93	bovine	83.8	0	O	WA		
viba_285	UKG/35/2001	porcine	83.4	0	O	ME-SA	PanAsia	
viba_85	UGA/3/2002		83.4	0	O	EA-2		
viba_30238	MUR/19/2016	cattle	83.4	0	O	ME-SA	Ind-2001	e
viba_523	K83/79		83.3	0	O	EA-1		
viba_68	TAI/189/87	bovine	83.3	0	O	SEA		

Virus sample name:	KD/KD/03/NIG/2020
Sender reference:	KD/KD/03
Location of origin:	Kaduna, Kaduna State
Country of origin:	Nigeria
Date of collection:	08/09/2020
Host species:	cattle
Serotype:	O
Topotype:	EA-3
Lineage:	
Sublineage:	
Sequence length:	633
Ambiguities:	0
Material submitted for sequencing:	n/a
Harvest date of material:	n/a
Primers:	n/a
Received for sequencing:	n/a
Created:	22/12/2021
Last updated:	22/12/2021
VIBASys IDs: sample 49753, genome 49754, sequence viba_49755, sequencing info 49756	

Most Closely Related Sequences

sequence	virus name	Host	% Id.	# Ambig.	serotype	topotype	lineage	sublineage
viba_49743	KT/KT/03/NIG/2020	cattle	100.0	0	O	EA-3		
viba_49735	KT/KT/01/NIG/2020	cattle	99.8	0	O	EA-3		
viba_49731	KN/KN/02/NIG/2020	cattle	99.7	0	O	EA-3		
viba_49739	KT/KT/02/NIG/2020	cattle	99.7	0	O	EA-3		
viba_49727	KN/KN/01/NIG/2020	cattle	99.7	0	O	EA-3		
viba_49759	KD/KD/05/NIG/2020	cattle	99.7	0	O	EA-3		
viba_49751	KD/KD/02/NIG/2020	cattle	99.5	0	O	EA-3		
viba_49523	NIG/88/2020	cattle	99.4	0	O	EA-3		
viba_49891	PL/JN/021/NIG/2020	cattle	99.2	0	O	EA-3		
viba_49911	PL/JN/026/NIG/2020	cattle	99.2	0	O	EA-3		

Most Closely Related Prototype Sequences

see <http://www.wrlfmd.org/fmdv-genome/fmd-prototype-strains>

sequence	virus name	Host	% Id.	# Ambig.	serotype	topotype	lineage	sublineage
viba_116	SUD/2/86	bovine	88.2	0	O	EA-3		
viba_854	ETH/1/2007	cattle	85.0	0	O	EA-3		
viba_50	UGA/17/98		84.6	0	O	EA-4		
viba_104	GHA/5/93	bovine	83.9	0	O	WA		
viba_408	ETH/3/2004	cattle	83.8	0	O	EA-3		
viba_30238	MUR/19/2016	cattle	83.5	0	O	ME-SA	Ind-2001	e
viba_523	K83/79		83.4	0	O	EA-1		
viba_85	UGA/3/2002		83.4	0	O	EA-2		
viba_766	IRN/31/2009	cattle	83.4	0	O	ME-SA	PanAsia-2	FAR-09
viba_285	UKG/35/2001	porcine	83.3	0	O	ME-SA	PanAsia	

Virus sample name:	KD/KD/05/NIG/2020
Sender reference:	KD/KD/05
Location of origin:	Kaduna, Kaduna State
Country of origin:	Nigeria
Date of collection:	08/09/2020
Host species:	cattle
Serotype:	O
Topotype:	EA-3
Lineage:	
Sublineage:	
Sequence length:	633
Ambiguities:	0
Material submitted for sequencing:	n/a
Harvest date of material:	n/a
Primers:	n/a
Received for sequencing:	n/a
Created:	22/12/2021
Last updated:	22/12/2021
VIBASys IDs: sample 49757, genome 49758, sequence viba_49759, sequencing info 49760	

Most Closely Related Sequences

sequence	virus name	Host	% Id.	# Ambig.	serotype	topotype	lineage	sublineage
viba_49731	KN/KN/02/NIG/2020	cattle	100.0	0	O	EA-3		
viba_49739	KT/KT/02/NIG/2020	cattle	100.0	0	O	EA-3		
viba_49727	KN/KN/01/NIG/2020	cattle	100.0	0	O	EA-3		
viba_49751	KD/KD/02/NIG/2020	cattle	99.8	0	O	EA-3		
viba_49523	NIG/88/2020	cattle	99.7	0	O	EA-3		
viba_49755	KD/KD/03/NIG/2020	cattle	99.7	0	O	EA-3		
viba_49743	KT/KT/03/NIG/2020	cattle	99.7	0	O	EA-3		
viba_49735	KT/KT/01/NIG/2020	cattle	99.5	0	O	EA-3		
viba_49891	PL/JN/021/NIG/2020	cattle	99.5	0	O	EA-3		
viba_49911	PL/JN/026/NIG/2020	cattle	99.5	0	O	EA-3		

Most Closely Related Prototype Sequences

see <http://www.wrlfmd.org/fmdv-genome/fmd-prototype-strains>

sequence	virus name	Host	% Id.	# Ambig.	serotype	topotype	lineage	sublineage
viba_116	SUD/2/86	bovine	88.5	0	O	EA-3		
viba_854	ETH/1/2007	cattle	85.3	0	O	EA-3		
viba_50	UGA/17/98		84.9	0	O	EA-4		
viba_408	ETH/3/2004	cattle	84.1	0	O	EA-3		
viba_104	GHA/5/93	bovine	83.9	0	O	WA		
viba_285	UKG/35/2001	porcine	83.6	0	O	ME-SA	PanAsia	
viba_85	UGA/3/2002		83.6	0	O	EA-2		
viba_68	TAI/189/87	bovine	83.5	0	O	SEA		
viba_30238	MUR/19/2016	cattle	83.5	0	O	ME-SA	Ind-2001	e
viba_523	K83/79		83.4	0	O	EA-1		

Virus sample name:	PL/KA/01/NIG/2020
Sender reference:	PL/KA/01
Location of origin:	Jos south, Plateau state
Country of origin:	Nigeria
Date of collection:	08/09/2020
Host species:	cattle
Serotype:	O
Topotype:	EA-3
Lineage:	
Sublineage:	
Sequence length:	633
Ambiguities:	0
Material submitted for sequencing:	n/a
Harvest date of material:	n/a
Primers:	n/a
Received for sequencing:	n/a
Created:	22/12/2021
Last updated:	22/12/2021
VIBASys IDs: sample 49761, genome 49762, sequence viba_49763, sequencing info 49764	

Most Closely Related Sequences

sequence	virus name	Host	% Id.	# Ambig.	serotype	topotype	lineage	sublineage
viba_49787	PL/KAN/05/NIG/2020	cattle	100.0	0	O	EA-3		
viba_49843	KN/BMF/01/NIG/2020	cattle	100.0	0	O	EA-3		
viba_49807	PL/JE/019/NIG/2020	cattle	100.0	0	O	EA-3		
viba_49887	PL/JN/020/NIG/2020	cattle	100.0	0	O	EA-3		
viba_49771	PL/KAN/01/NIG/2020	cattle	100.0	0	O	EA-3		
viba_49767	PL/KA/02/NIG/2020	cattle	100.0	0	O	EA-3		
viba_49803	PL/JE/017/NIG/2020	cattle	100.0	0	O	EA-3		
viba_49775	PL/KAN/02/NIG/2020	cattle	100.0	0	O	EA-3		
viba_49791	PL/KAN/06/NIG/2020	cattle	100.0	0	O	EA-3		
viba_49783	PL/KAN/04/NIG/2020	cattle	100.0	0	O	EA-3		

Most Closely Related Prototype Sequences

see <http://www.wrlfmd.org/fmdv-genome/fmd-prototype-strains>

sequence	virus name	Host	% Id.	# Ambig.	serotype	topotype	lineage	sublineage
viba_116	SUD/2/86	bovine	88.2	0	O	EA-3		
viba_50	UGA/17/98		85.5	0	O	EA-4		
viba_854	ETH/1/2007	cattle	85.3	0	O	EA-3		
viba_104	GHA/5/93	bovine	84.4	0	O	WA		
viba_408	ETH/3/2004	cattle	84.1	0	O	EA-3		
viba_285	UKG/35/2001	porcine	83.7	0	O	ME-SA	PanAsia	
viba_30238	MUR/19/2016	cattle	83.7	0	O	ME-SA	Ind-2001	e
viba_85	UGA/3/2002		83.6	0	O	EA-2		
viba_68	TAI/189/87	bovine	83.6	0	O	SEA		
viba_766	IRN/31/2009	cattle	83.6	0	O	ME-SA	PanAsia-2	FAR-09

Virus sample name:	PL/KA/02/NIG/2020
Sender reference:	PL/KA/02
Location of origin:	Jos south, Plateau state
Country of origin:	Nigeria
Date of collection:	08/09/2020
Host species:	cattle
Serotype:	O
Topotype:	EA-3
Lineage:	
Sublineage:	
Sequence length:	633
Ambiguities:	0
Material submitted for sequencing:	n/a
Harvest date of material:	n/a
Primers:	n/a
Received for sequencing:	n/a
Created:	22/12/2021
Last updated:	22/12/2021
VIBASys IDs: sample 49765, genome 49766, sequence viba_49767, sequencing info 49768	

Most Closely Related Sequences

sequence	virus name	Host	% Id.	# Ambig.	serotype	topotype	lineage	sublineage
viba_49787	PL/KAN/05/NIG/2020	cattle	100.0	0	O	EA-3		
viba_49843	KN/BMF/01/NIG/2020	cattle	100.0	0	O	EA-3		
viba_49807	PL/JE/019/NIG/2020	cattle	100.0	0	O	EA-3		
viba_49887	PL/JN/020/NIG/2020	cattle	100.0	0	O	EA-3		
viba_49771	PL/KAN/01/NIG/2020	cattle	100.0	0	O	EA-3		
viba_49803	PL/JE/017/NIG/2020	cattle	100.0	0	O	EA-3		
viba_49775	PL/KAN/02/NIG/2020	cattle	100.0	0	O	EA-3		
viba_49791	PL/KAN/06/NIG/2020	cattle	100.0	0	O	EA-3		
viba_49783	PL/KAN/04/NIG/2020	cattle	100.0	0	O	EA-3		
viba_49763	PL/KA/01/NIG/2020	cattle	100.0	0	O	EA-3		

Most Closely Related Prototype Sequences

see <http://www.wrlfmd.org/fmdv-genome/fmd-prototype-strains>

sequence	virus name	Host	% Id.	# Ambig.	serotype	topotype	lineage	sublineage
viba_116	SUD/2/86	bovine	88.2	0	O	EA-3		
viba_50	UGA/17/98		85.5	0	O	EA-4		
viba_854	ETH/1/2007	cattle	85.3	0	O	EA-3		
viba_104	GHA/5/93	bovine	84.4	0	O	WA		
viba_408	ETH/3/2004	cattle	84.1	0	O	EA-3		
viba_285	UKG/35/2001	porcine	83.7	0	O	ME-SA	PanAsia	
viba_30238	MUR/19/2016	cattle	83.7	0	O	ME-SA	Ind-2001	e
viba_85	UGA/3/2002		83.6	0	O	EA-2		
viba_68	TAI/189/87	bovine	83.6	0	O	SEA		
viba_766	IRN/31/2009	cattle	83.6	0	O	ME-SA	PanAsia-2	FAR-09

Virus sample name:	PL/KAN/01/NIG/2020
Sender reference:	PL/KAN/01
Location of origin:	Kanke, Plateau state
Country of origin:	Nigeria
Date of collection:	08/09/2020
Host species:	cattle
Serotype:	O
Topotype:	EA-3
Lineage:	
Sublineage:	
Sequence length:	633
Ambiguities:	0
Material submitted for sequencing:	n/a
Harvest date of material:	n/a
Primers:	n/a
Received for sequencing:	n/a
Created:	22/12/2021
Last updated:	22/12/2021
VIBASys IDs: sample 49769, genome 49770, sequence viba_49771, sequencing info 49772	

Most Closely Related Sequences

sequence	virus name	Host	% Id.	# Ambig.	serotype	topotype	lineage	sublineage
viba_49787	PL/KAN/05/NIG/2020	cattle	100.0	0	O	EA-3		
viba_49843	KN/BMF/01/NIG/2020	cattle	100.0	0	O	EA-3		
viba_49807	PL/JE/019/NIG/2020	cattle	100.0	0	O	EA-3		
viba_49887	PL/JN/020/NIG/2020	cattle	100.0	0	O	EA-3		
viba_49767	PL/KA/02/NIG/2020	cattle	100.0	0	O	EA-3		
viba_49803	PL/JE/017/NIG/2020	cattle	100.0	0	O	EA-3		
viba_49775	PL/KAN/02/NIG/2020	cattle	100.0	0	O	EA-3		
viba_49791	PL/KAN/06/NIG/2020	cattle	100.0	0	O	EA-3		
viba_49783	PL/KAN/04/NIG/2020	cattle	100.0	0	O	EA-3		
viba_49763	PL/KA/01/NIG/2020	cattle	100.0	0	O	EA-3		

Most Closely Related Prototype Sequences

see <http://www.wrlfmd.org/fmdv-genome/fmd-prototype-strains>

sequence	virus name	Host	% Id.	# Ambig.	serotype	topotype	lineage	sublineage
viba_116	SUD/2/86	bovine	88.2	0	O	EA-3		
viba_50	UGA/17/98		85.5	0	O	EA-4		
viba_854	ETH/1/2007	cattle	85.3	0	O	EA-3		
viba_104	GHA/5/93	bovine	84.4	0	O	WA		
viba_408	ETH/3/2004	cattle	84.1	0	O	EA-3		
viba_285	UKG/35/2001	porcine	83.7	0	O	ME-SA	PanAsia	
viba_30238	MUR/19/2016	cattle	83.7	0	O	ME-SA	Ind-2001	e
viba_85	UGA/3/2002		83.6	0	O	EA-2		
viba_68	TAI/189/87	bovine	83.6	0	O	SEA		
viba_766	IRN/31/2009	cattle	83.6	0	O	ME-SA	PanAsia-2	FAR-09

Virus sample name:	PL/KAN/02/NIG/2020
Sender reference:	PL/KAN/02
Location of origin:	Kanke, Plateau state
Country of origin:	Nigeria
Date of collection:	08/09/2020
Host species:	cattle
Serotype:	O
Topotype:	EA-3
Lineage:	
Sublineage:	
Sequence length:	633
Ambiguities:	0
Material submitted for sequencing:	n/a
Harvest date of material:	n/a
Primers:	n/a
Received for sequencing:	n/a
Created:	22/12/2021
Last updated:	22/12/2021
VIBASys IDs: sample 49773, genome 49774, sequence viba_49775, sequencing info 49776	

Most Closely Related Sequences

sequence	virus name	Host	% Id.	# Ambig.	serotype	topotype	lineage	sublineage
viba_49787	PL/KAN/05/NIG/2020	cattle	100.0	0	O	EA-3		
viba_49843	KN/BMF/01/NIG/2020	cattle	100.0	0	O	EA-3		
viba_49807	PL/JE/019/NIG/2020	cattle	100.0	0	O	EA-3		
viba_49887	PL/JN/020/NIG/2020	cattle	100.0	0	O	EA-3		
viba_49771	PL/KAN/01/NIG/2020	cattle	100.0	0	O	EA-3		
viba_49767	PL/KA/02/NIG/2020	cattle	100.0	0	O	EA-3		
viba_49803	PL/JE/017/NIG/2020	cattle	100.0	0	O	EA-3		
viba_49791	PL/KAN/06/NIG/2020	cattle	100.0	0	O	EA-3		
viba_49783	PL/KAN/04/NIG/2020	cattle	100.0	0	O	EA-3		
viba_49763	PL/KA/01/NIG/2020	cattle	100.0	0	O	EA-3		

Most Closely Related Prototype Sequences

see <http://www.wrlfmd.org/fmdv-genome/fmd-prototype-strains>

sequence	virus name	Host	% Id.	# Ambig.	serotype	topotype	lineage	sublineage
viba_116	SUD/2/86	bovine	88.2	0	O	EA-3		
viba_50	UGA/17/98		85.5	0	O	EA-4		
viba_854	ETH/1/2007	cattle	85.3	0	O	EA-3		
viba_104	GHA/5/93	bovine	84.4	0	O	WA		
viba_408	ETH/3/2004	cattle	84.1	0	O	EA-3		
viba_285	UKG/35/2001	porcine	83.7	0	O	ME-SA	PanAsia	
viba_30238	MUR/19/2016	cattle	83.7	0	O	ME-SA	Ind-2001	e
viba_85	UGA/3/2002		83.6	0	O	EA-2		
viba_68	TAI/189/87	bovine	83.6	0	O	SEA		
viba_766	IRN/31/2009	cattle	83.6	0	O	ME-SA	PanAsia-2	FAR-09

Virus sample name:	PL/KAN/03/NIG/2020
Sender reference:	PL/KAN/03
Location of origin:	Kanke, Plateau state
Country of origin:	Nigeria
Date of collection:	08/09/2020
Host species:	cattle
Serotype:	O
Topotype:	EA-3
Lineage:	
Sublineage:	
Sequence length:	633
Ambiguities:	0
Material submitted for sequencing:	n/a
Harvest date of material:	n/a
Primers:	n/a
Received for sequencing:	n/a
Created:	22/12/2021
Last updated:	22/12/2021
VIBASys IDs: sample 49777, genome 49778, sequence viba_49779, sequencing info 49780	

Most Closely Related Sequences

sequence	virus name	Host	% Id.	# Ambig.	serotype	topotype	lineage	sublineage
viba_49787	PL/KAN/05/NIG/2020	cattle	99.8	0	O	EA-3		
viba_49843	KN/BMF/01/NIG/2020	cattle	99.8	0	O	EA-3		
viba_49807	PL/JE/019/NIG/2020	cattle	99.8	0	O	EA-3		
viba_49887	PL/JN/020/NIG/2020	cattle	99.8	0	O	EA-3		
viba_49771	PL/KAN/01/NIG/2020	cattle	99.8	0	O	EA-3		
viba_49767	PL/KA/02/NIG/2020	cattle	99.8	0	O	EA-3		
viba_49803	PL/JE/017/NIG/2020	cattle	99.8	0	O	EA-3		
viba_49775	PL/KAN/02/NIG/2020	cattle	99.8	0	O	EA-3		
viba_49791	PL/KAN/06/NIG/2020	cattle	99.8	0	O	EA-3		
viba_49783	PL/KAN/04/NIG/2020	cattle	99.8	0	O	EA-3		

Most Closely Related Prototype Sequences

see <http://www.wrlfmd.org/fmdv-genome/fmd-prototype-strains>

sequence	virus name	Host	% Id.	# Ambig.	serotype	topotype	lineage	sublineage
viba_116	SUD/2/86	bovine	88.3	0	O	EA-3		
viba_50	UGA/17/98		85.6	0	O	EA-4		
viba_854	ETH/1/2007	cattle	85.5	0	O	EA-3		
viba_104	GHA/5/93	bovine	84.5	0	O	WA		
viba_408	ETH/3/2004	cattle	84.3	0	O	EA-3		
viba_285	UKG/35/2001	porcine	83.9	0	O	ME-SA	PanAsia	
viba_68	TAI/189/87	bovine	83.8	0	O	SEA		
viba_30238	MUR/19/2016	cattle	83.8	0	O	ME-SA	Ind-2001	e
viba_85	UGA/3/2002		83.7	0	O	EA-2		
viba_766	IRN/31/2009	cattle	83.7	0	O	ME-SA	PanAsia-2	FAR-09

Virus sample name:	PL/KAN/04/NIG/2020
Sender reference:	PL/KAN/04
Location of origin:	Kanke, Plateau state
Country of origin:	Nigeria
Date of collection:	08/09/2020
Host species:	cattle
Serotype:	O
Topotype:	EA-3
Lineage:	
Sublineage:	
Sequence length:	633
Ambiguities:	0
Material submitted for sequencing:	n/a
Harvest date of material:	n/a
Primers:	n/a
Received for sequencing:	n/a
Created:	22/12/2021
Last updated:	22/12/2021
VIBASys IDs: sample 49781, genome 49782, sequence viba_49783, sequencing info 49784	

Most Closely Related Sequences

sequence	virus name	Host	% Id.	# Ambig.	serotype	topotype	lineage	sublineage
viba_49787	PL/KAN/05/NIG/2020	cattle	100.0	0	O	EA-3		
viba_49843	KN/BMF/01/NIG/2020	cattle	100.0	0	O	EA-3		
viba_49807	PL/JE/019/NIG/2020	cattle	100.0	0	O	EA-3		
viba_49887	PL/JN/020/NIG/2020	cattle	100.0	0	O	EA-3		
viba_49771	PL/KAN/01/NIG/2020	cattle	100.0	0	O	EA-3		
viba_49767	PL/KA/02/NIG/2020	cattle	100.0	0	O	EA-3		
viba_49803	PL/JE/017/NIG/2020	cattle	100.0	0	O	EA-3		
viba_49775	PL/KAN/02/NIG/2020	cattle	100.0	0	O	EA-3		
viba_49791	PL/KAN/06/NIG/2020	cattle	100.0	0	O	EA-3		
viba_49763	PL/KA/01/NIG/2020	cattle	100.0	0	O	EA-3		

Most Closely Related Prototype Sequences

see <http://www.wrlfmd.org/fmdv-genome/fmd-prototype-strains>

sequence	virus name	Host	% Id.	# Ambig.	serotype	topotype	lineage	sublineage
viba_116	SUD/2/86	bovine	88.2	0	O	EA-3		
viba_50	UGA/17/98		85.5	0	O	EA-4		
viba_854	ETH/1/2007	cattle	85.3	0	O	EA-3		
viba_104	GHA/5/93	bovine	84.4	0	O	WA		
viba_408	ETH/3/2004	cattle	84.1	0	O	EA-3		
viba_285	UKG/35/2001	porcine	83.7	0	O	ME-SA	PanAsia	
viba_30238	MUR/19/2016	cattle	83.7	0	O	ME-SA	Ind-2001	e
viba_85	UGA/3/2002		83.6	0	O	EA-2		
viba_68	TAI/189/87	bovine	83.6	0	O	SEA		
viba_766	IRN/31/2009	cattle	83.6	0	O	ME-SA	PanAsia-2	FAR-09

Virus sample name:	PL/KAN/05/NIG/2020
Sender reference:	PL/KAN/05
Location of origin:	Kanke, Plateau state
Country of origin:	Nigeria
Date of collection:	08/09/2020
Host species:	cattle
Serotype:	O
Topotype:	EA-3
Lineage:	
Sublineage:	
Sequence length:	633
Ambiguities:	0
Material submitted for sequencing:	n/a
Harvest date of material:	n/a
Primers:	n/a
Received for sequencing:	n/a
Created:	22/12/2021
Last updated:	22/12/2021
VIBASys IDs: sample 49785, genome 49786, sequence viba_49787, sequencing info 49788	

Most Closely Related Sequences

sequence	virus name	Host	% Id.	# Ambig.	serotype	topotype	lineage	sublineage
viba_49843	KN/BMF/01/NIG/2020	cattle	100.0	0	O	EA-3		
viba_49807	PL/JE/019/NIG/2020	cattle	100.0	0	O	EA-3		
viba_49887	PL/JN/020/NIG/2020	cattle	100.0	0	O	EA-3		
viba_49771	PL/KAN/01/NIG/2020	cattle	100.0	0	O	EA-3		
viba_49767	PL/KA/02/NIG/2020	cattle	100.0	0	O	EA-3		
viba_49803	PL/JE/017/NIG/2020	cattle	100.0	0	O	EA-3		
viba_49775	PL/KAN/02/NIG/2020	cattle	100.0	0	O	EA-3		
viba_49791	PL/KAN/06/NIG/2020	cattle	100.0	0	O	EA-3		
viba_49783	PL/KAN/04/NIG/2020	cattle	100.0	0	O	EA-3		
viba_49763	PL/KA/01/NIG/2020	cattle	100.0	0	O	EA-3		

Most Closely Related Prototype Sequences

see <http://www.wrlfmd.org/fmdv-genome/fmd-prototype-strains>

sequence	virus name	Host	% Id.	# Ambig.	serotype	topotype	lineage	sublineage
viba_116	SUD/2/86	bovine	88.2	0	O	EA-3		
viba_50	UGA/17/98		85.5	0	O	EA-4		
viba_854	ETH/1/2007	cattle	85.3	0	O	EA-3		
viba_104	GHA/5/93	bovine	84.4	0	O	WA		
viba_408	ETH/3/2004	cattle	84.1	0	O	EA-3		
viba_285	UKG/35/2001	porcine	83.7	0	O	ME-SA	PanAsia	
viba_30238	MUR/19/2016	cattle	83.7	0	O	ME-SA	Ind-2001	e
viba_85	UGA/3/2002		83.6	0	O	EA-2		
viba_68	TAI/189/87	bovine	83.6	0	O	SEA		
viba_766	IRN/31/2009	cattle	83.6	0	O	ME-SA	PanAsia-2	FAR-09

Virus sample name:	PL/KAN/06/NIG/2020
Sender reference:	PL/KAN/06
Location of origin:	Kanke, Plateau state
Country of origin:	Nigeria
Date of collection:	08/09/2020
Host species:	cattle
Serotype:	O
Topotype:	EA-3
Lineage:	
Sublineage:	
Sequence length:	633
Ambiguities:	0
Material submitted for sequencing:	n/a
Harvest date of material:	n/a
Primers:	n/a
Received for sequencing:	n/a
Created:	22/12/2021
Last updated:	22/12/2021
VIBASys IDs: sample 49789, genome 49790, sequence viba_49791, sequencing info 49792	

Most Closely Related Sequences

sequence	virus name	Host	% Id.	# Ambig.	serotype	topotype	lineage	sublineage
viba_49787	PL/KAN/05/NIG/2020	cattle	100.0	0	O	EA-3		
viba_49843	KN/BMF/01/NIG/2020	cattle	100.0	0	O	EA-3		
viba_49807	PL/JE/019/NIG/2020	cattle	100.0	0	O	EA-3		
viba_49887	PL/JN/020/NIG/2020	cattle	100.0	0	O	EA-3		
viba_49771	PL/KAN/01/NIG/2020	cattle	100.0	0	O	EA-3		
viba_49767	PL/KA/02/NIG/2020	cattle	100.0	0	O	EA-3		
viba_49803	PL/JE/017/NIG/2020	cattle	100.0	0	O	EA-3		
viba_49775	PL/KAN/02/NIG/2020	cattle	100.0	0	O	EA-3		
viba_49783	PL/KAN/04/NIG/2020	cattle	100.0	0	O	EA-3		
viba_49763	PL/KA/01/NIG/2020	cattle	100.0	0	O	EA-3		

Most Closely Related Prototype Sequences

see <http://www.wrlfmd.org/fmdv-genome/fmd-prototype-strains>

sequence	virus name	Host	% Id.	# Ambig.	serotype	topotype	lineage	sublineage
viba_116	SUD/2/86	bovine	88.2	0	O	EA-3		
viba_50	UGA/17/98		85.5	0	O	EA-4		
viba_854	ETH/1/2007	cattle	85.3	0	O	EA-3		
viba_104	GHA/5/93	bovine	84.4	0	O	WA		
viba_408	ETH/3/2004	cattle	84.1	0	O	EA-3		
viba_285	UKG/35/2001	porcine	83.7	0	O	ME-SA	PanAsia	
viba_30238	MUR/19/2016	cattle	83.7	0	O	ME-SA	Ind-2001	e
viba_85	UGA/3/2002		83.6	0	O	EA-2		
viba_68	TAI/189/87	bovine	83.6	0	O	SEA		
viba_766	IRN/31/2009	cattle	83.6	0	O	ME-SA	PanAsia-2	FAR-09

Virus sample name:	PL/RY/01/NIG/2020
Sender reference:	PL/RY/01
Location of origin:	Riyom, Plateau state
Country of origin:	Nigeria
Date of collection:	08/09/2020
Host species:	cattle
Serotype:	O
Topotype:	EA-3
Lineage:	
Sublineage:	
Sequence length:	633
Ambiguities:	0
Material submitted for sequencing:	n/a
Harvest date of material:	n/a
Primers:	n/a
Received for sequencing:	n/a
Created:	22/12/2021
Last updated:	22/12/2021
VIBASys IDs: sample 49793, genome 49794, sequence viba_49795, sequencing info 49796	

Most Closely Related Sequences

sequence	virus name	Host	% Id.	# Ambig.	serotype	topotype	lineage	sublineage
viba_49799	PL/RY/02/NIG/2020	cattle	100.0	0	O	EA-3		
viba_49787	PL/KAN/05/NIG/2020	cattle	99.5	0	O	EA-3		
viba_49843	KN/BMF/01/NIG/2020	cattle	99.5	0	O	EA-3		
viba_49807	PL/JE/019/NIG/2020	cattle	99.5	0	O	EA-3		
viba_49927	KD/ZA/01/NIG/2020	cattle	99.5	0	O	EA-3		
viba_49887	PL/JN/020/NIG/2020	cattle	99.5	0	O	EA-3		
viba_49771	PL/KAN/01/NIG/2020	cattle	99.5	0	O	EA-3		
viba_49767	PL/KA/02/NIG/2020	cattle	99.5	0	O	EA-3		
viba_49803	PL/JE/017/NIG/2020	cattle	99.5	0	O	EA-3		
viba_49775	PL/KAN/02/NIG/2020	cattle	99.5	0	O	EA-3		

Most Closely Related Prototype Sequences

see <http://www.wrlfmd.org/fmdv-genome/fmd-prototype-strains>

sequence	virus name	Host	% Id.	# Ambig.	serotype	topotype	lineage	sublineage
viba_116	SUD/2/86	bovine	88.0	0	O	EA-3		
viba_50	UGA/17/98		85.6	0	O	EA-4		
viba_854	ETH/1/2007	cattle	85.5	0	O	EA-3		
viba_104	GHA/5/93	bovine	84.4	0	O	WA		
viba_408	ETH/3/2004	cattle	84.3	0	O	EA-3		
viba_523	K83/79		83.9	0	O	EA-1		
viba_68	TAI/189/87	bovine	83.8	0	O	SEA		
viba_30238	MUR/19/2016	cattle	83.7	0	O	ME-SA	Ind-2001	e
viba_285	UKG/35/2001	porcine	83.3	0	O	ME-SA	PanAsia	
viba_85	UGA/3/2002		83.3	0	O	EA-2		

Virus sample name:	PL/R/02/NIG/2020
Sender reference:	PL/R/02
Location of origin:	Riyom, Plateau state
Country of origin:	Nigeria
Date of collection:	08/09/2020
Host species:	cattle
Serotype:	O
Topotype:	EA-3
Lineage:	
Sublineage:	
Sequence length:	633
Ambiguities:	0
Material submitted for sequencing:	n/a
Harvest date of material:	n/a
Primers:	n/a
Received for sequencing:	n/a
Created:	22/12/2021
Last updated:	22/12/2021
VIBASys IDs: sample 49797, genome 49798, sequence viba_49799, sequencing info 49800	

Most Closely Related Sequences

sequence	virus name	Host	% Id.	# Ambig.	serotype	topotype	lineage	sublineage
viba_49795	PL/R/01/NIG/2020	cattle	100.0	0	O	EA-3		
viba_49787	PL/KAN/05/NIG/2020	cattle	99.5	0	O	EA-3		
viba_49843	KN/BMF/01/NIG/2020	cattle	99.5	0	O	EA-3		
viba_49807	PL/JE/019/NIG/2020	cattle	99.5	0	O	EA-3		
viba_49927	KD/ZA/01/NIG/2020	cattle	99.5	0	O	EA-3		
viba_49887	PL/JN/020/NIG/2020	cattle	99.5	0	O	EA-3		
viba_49771	PL/KAN/01/NIG/2020	cattle	99.5	0	O	EA-3		
viba_49767	PL/KA/02/NIG/2020	cattle	99.5	0	O	EA-3		
viba_49803	PL/JE/017/NIG/2020	cattle	99.5	0	O	EA-3		
viba_49775	PL/KAN/02/NIG/2020	cattle	99.5	0	O	EA-3		

Most Closely Related Prototype Sequences

see <http://www.wrlfmd.org/fmdv-genome/fmd-prototype-strains>

sequence	virus name	Host	% Id.	# Ambig.	serotype	topotype	lineage	sublineage
viba_116	SUD/2/86	bovine	88.0	0	O	EA-3		
viba_50	UGA/17/98		85.6	0	O	EA-4		
viba_854	ETH/1/2007	cattle	85.5	0	O	EA-3		
viba_104	GHA/5/93	bovine	84.4	0	O	WA		
viba_408	ETH/3/2004	cattle	84.3	0	O	EA-3		
viba_523	K83/79		83.9	0	O	EA-1		
viba_68	TAI/189/87	bovine	83.8	0	O	SEA		
viba_30238	MUR/19/2016	cattle	83.7	0	O	ME-SA	Ind-2001	e
viba_285	UKG/35/2001	porcine	83.3	0	O	ME-SA	PanAsia	
viba_85	UGA/3/2002		83.3	0	O	EA-2		

Virus sample name:	PL/JE/017/NIG/2020
Sender reference:	PL/JE/017
Location of origin:	Jos East, Plateau State
Country of origin:	Nigeria
Date of collection:	11/09/2020
Host species:	cattle
Serotype:	O
Topotype:	EA-3
Lineage:	
Sublineage:	
Sequence length:	633
Ambiguities:	0
Material submitted for sequencing:	n/a
Harvest date of material:	n/a
Primers:	n/a
Received for sequencing:	n/a
Created:	22/12/2021
Last updated:	22/12/2021
VIBASys IDs: sample 49801, genome 49802, sequence viba_49803, sequencing info 49804	

Most Closely Related Sequences

sequence	virus name	Host	% Id.	# Ambig.	serotype	topotype	lineage	sublineage
viba_49787	PL/KAN/05/NIG/2020	cattle	100.0	0	O	EA-3		
viba_49843	KN/BMF/01/NIG/2020	cattle	100.0	0	O	EA-3		
viba_49807	PL/JE/019/NIG/2020	cattle	100.0	0	O	EA-3		
viba_49887	PL/JN/020/NIG/2020	cattle	100.0	0	O	EA-3		
viba_49771	PL/KAN/01/NIG/2020	cattle	100.0	0	O	EA-3		
viba_49767	PL/KA/02/NIG/2020	cattle	100.0	0	O	EA-3		
viba_49775	PL/KAN/02/NIG/2020	cattle	100.0	0	O	EA-3		
viba_49791	PL/KAN/06/NIG/2020	cattle	100.0	0	O	EA-3		
viba_49783	PL/KAN/04/NIG/2020	cattle	100.0	0	O	EA-3		
viba_49763	PL/KA/01/NIG/2020	cattle	100.0	0	O	EA-3		

Most Closely Related Prototype Sequences

see <http://www.wrlfmd.org/fmdv-genome/fmd-prototype-strains>

sequence	virus name	Host	% Id.	# Ambig.	serotype	topotype	lineage	sublineage
viba_116	SUD/2/86	bovine	88.2	0	O	EA-3		
viba_50	UGA/17/98		85.5	0	O	EA-4		
viba_854	ETH/1/2007	cattle	85.3	0	O	EA-3		
viba_104	GHA/5/93	bovine	84.4	0	O	WA		
viba_408	ETH/3/2004	cattle	84.1	0	O	EA-3		
viba_285	UKG/35/2001	porcine	83.7	0	O	ME-SA	PanAsia	
viba_30238	MUR/19/2016	cattle	83.7	0	O	ME-SA	Ind-2001	e
viba_85	UGA/3/2002		83.6	0	O	EA-2		
viba_68	TAI/189/87	bovine	83.6	0	O	SEA		
viba_766	IRN/31/2009	cattle	83.6	0	O	ME-SA	PanAsia-2	FAR-09

Virus sample name:	PL/JE/019/NIG/2020
Sender reference:	PL/JE/019
Location of origin:	Jos East, Plateau State
Country of origin:	Nigeria
Date of collection:	11/09/2020
Host species:	cattle
Serotype:	O
Topotype:	EA-3
Lineage:	
Sublineage:	
Sequence length:	633
Ambiguities:	0
Material submitted for sequencing:	n/a
Harvest date of material:	n/a
Primers:	n/a
Received for sequencing:	n/a
Created:	22/12/2021
Last updated:	22/12/2021
VIBASys IDs: sample 49805, genome 49806, sequence viba_49807, sequencing info 49808	

Most Closely Related Sequences

sequence	virus name	Host	% Id.	# Ambig.	serotype	topotype	lineage	sublineage
viba_49787	PL/KAN/05/NIG/2020	cattle	100.0	0	O	EA-3		
viba_49843	KN/BMF/01/NIG/2020	cattle	100.0	0	O	EA-3		
viba_49887	PL/JN/020/NIG/2020	cattle	100.0	0	O	EA-3		
viba_49771	PL/KAN/01/NIG/2020	cattle	100.0	0	O	EA-3		
viba_49767	PL/KA/02/NIG/2020	cattle	100.0	0	O	EA-3		
viba_49803	PL/JE/017/NIG/2020	cattle	100.0	0	O	EA-3		
viba_49775	PL/KAN/02/NIG/2020	cattle	100.0	0	O	EA-3		
viba_49791	PL/KAN/06/NIG/2020	cattle	100.0	0	O	EA-3		
viba_49783	PL/KAN/04/NIG/2020	cattle	100.0	0	O	EA-3		
viba_49763	PL/KA/01/NIG/2020	cattle	100.0	0	O	EA-3		

Most Closely Related Prototype Sequences

see <http://www.wrlfmd.org/fmdv-genome/fmd-prototype-strains>

sequence	virus name	Host	% Id.	# Ambig.	serotype	topotype	lineage	sublineage
viba_116	SUD/2/86	bovine	88.2	0	O	EA-3		
viba_50	UGA/17/98		85.5	0	O	EA-4		
viba_854	ETH/1/2007	cattle	85.3	0	O	EA-3		
viba_104	GHA/5/93	bovine	84.4	0	O	WA		
viba_408	ETH/3/2004	cattle	84.1	0	O	EA-3		
viba_285	UKG/35/2001	porcine	83.7	0	O	ME-SA	PanAsia	
viba_30238	MUR/19/2016	cattle	83.7	0	O	ME-SA	Ind-2001	e
viba_85	UGA/3/2002		83.6	0	O	EA-2		
viba_68	TAI/189/87	bovine	83.6	0	O	SEA		
viba_766	IRN/31/2009	cattle	83.6	0	O	ME-SA	PanAsia-2	FAR-09

Virus sample name:	PL/BK/030/NIG/2020
Sender reference:	PL/BK/030
Location of origin:	Bokkos, Plateau State
Country of origin:	Nigeria
Date of collection:	13/09/2020
Host species:	cattle
Serotype:	O
Topotype:	EA-3
Lineage:	
Sublineage:	
Sequence length:	633
Ambiguities:	0
Material submitted for sequencing:	n/a
Harvest date of material:	n/a
Primers:	n/a
Received for sequencing:	n/a
Created:	22/12/2021
Last updated:	22/12/2021
VIBASys IDs: sample 49809, genome 49810, sequence viba_49811, sequencing info 49812	

Most Closely Related Sequences

sequence	virus name	Host	% Id.	# Ambig.	serotype	topotype	lineage	sublineage
viba_49891	PL/JN/021/NIG/2020	cattle	100.0	0	O	EA-3		
viba_49911	PL/JN/026/NIG/2020	cattle	100.0	0	O	EA-3		
viba_49919	PL/JN/028/NIG/2020	cattle	100.0	0	O	EA-3		
viba_49915	PL/JN/027/NIG/2020	cattle	100.0	0	O	EA-3		
viba_49895	PL/JN/022/NIG/2020	cattle	100.0	0	O	EA-3		
viba_49907	PL/JN/025/NIG/2020	cattle	100.0	0	O	EA-3		
viba_49815	PL/BK/033/NIG/2020	cattle	100.0	0	O	EA-3		
viba_49899	PL/JN/023/NIG/2020	cattle	100.0	0	O	EA-3		
viba_49903	PL/JN/024/NIG/2020	cattle	100.0	0	O	EA-3		
viba_49923	PL/JN/029/NIG/2020	cattle	100.0	0	O	EA-3		

Most Closely Related Prototype Sequences

see <http://www.wrlfmd.org/fmdv-genome/fmd-prototype-strains>

sequence	virus name	Host	% Id.	# Ambig.	serotype	topotype	lineage	sublineage
viba_116	SUD/2/86	bovine	88.6	0	O	EA-3		
viba_854	ETH/1/2007	cattle	85.5	0	O	EA-3		
viba_50	UGA/17/98		85.3	0	O	EA-4		
viba_104	GHA/5/93	bovine	84.4	0	O	WA		
viba_408	ETH/3/2004	cattle	84.3	0	O	EA-3		
viba_285	UKG/35/2001	porcine	83.7	0	O	ME-SA	PanAsia	
viba_85	UGA/3/2002		83.7	0	O	EA-2		
viba_30238	MUR/19/2016	cattle	83.7	0	O	ME-SA	Ind-2001	e
viba_523	K83/79		83.6	0	O	EA-1		
viba_68	TAI/189/87	bovine	83.6	0	O	SEA		

Virus sample name:	PL/BK/033/NIG/2020
Sender reference:	PL/BK/033
Location of origin:	Bokkos, Plateau State
Country of origin:	Nigeria
Date of collection:	13/09/2020
Host species:	cattle
Serotype:	O
Topotype:	EA-3
Lineage:	
Sublineage:	
Sequence length:	633
Ambiguities:	0
Material submitted for sequencing:	n/a
Harvest date of material:	n/a
Primers:	n/a
Received for sequencing:	n/a
Created:	22/12/2021
Last updated:	22/12/2021
VIBASys IDs: sample 49813, genome 49814, sequence viba_49815, sequencing info 49816	

Most Closely Related Sequences

sequence	virus name	Host	% Id.	# Ambig.	serotype	topotype	lineage	sublineage
viba_49891	PL/JN/021/NIG/2020	cattle	100.0	0	O	EA-3		
viba_49911	PL/JN/026/NIG/2020	cattle	100.0	0	O	EA-3		
viba_49919	PL/JN/028/NIG/2020	cattle	100.0	0	O	EA-3		
viba_49915	PL/JN/027/NIG/2020	cattle	100.0	0	O	EA-3		
viba_49895	PL/JN/022/NIG/2020	cattle	100.0	0	O	EA-3		
viba_49907	PL/JN/025/NIG/2020	cattle	100.0	0	O	EA-3		
viba_49811	PL/BK/030/NIG/2020	cattle	100.0	0	O	EA-3		
viba_49899	PL/JN/023/NIG/2020	cattle	100.0	0	O	EA-3		
viba_49903	PL/JN/024/NIG/2020	cattle	100.0	0	O	EA-3		
viba_49923	PL/JN/029/NIG/2020	cattle	100.0	0	O	EA-3		

Most Closely Related Prototype Sequences

see <http://www.wrlfmd.org/fmdv-genome/fmd-prototype-strains>

sequence	virus name	Host	% Id.	# Ambig.	serotype	topotype	lineage	sublineage
viba_116	SUD/2/86	bovine	88.6	0	O	EA-3		
viba_854	ETH/1/2007	cattle	85.5	0	O	EA-3		
viba_50	UGA/17/98		85.3	0	O	EA-4		
viba_104	GHA/5/93	bovine	84.4	0	O	WA		
viba_408	ETH/3/2004	cattle	84.3	0	O	EA-3		
viba_285	UKG/35/2001	porcine	83.7	0	O	ME-SA	PanAsia	
viba_85	UGA/3/2002		83.7	0	O	EA-2		
viba_30238	MUR/19/2016	cattle	83.7	0	O	ME-SA	Ind-2001	e
viba_523	K83/79		83.6	0	O	EA-1		
viba_68	TAI/189/87	bovine	83.6	0	O	SEA		

Virus sample name:	AD/GMB/02/NIG/2020
Sender reference:	AD/GMB/02
Location of origin:	Gombi, Adamawa State
Country of origin:	Nigeria
Date of collection:	14/09/2020
Host species:	cattle
Serotype:	O
Topotype:	EA-3
Lineage:	
Sublineage:	
Sequence length:	633
Ambiguities:	0
Material submitted for sequencing:	n/a
Harvest date of material:	n/a
Primers:	n/a
Received for sequencing:	n/a
Created:	22/12/2021
Last updated:	22/12/2021
VIBASys IDs: sample 49817, genome 49818, sequence viba_49819, sequencing info 49820	

Most Closely Related Sequences

sequence	virus name	Host	% Id.	# Ambig.	serotype	topotype	lineage	sublineage
viba_49827	AD/GMB/05/NIG/2020	cattle	100.0	0	O	EA-3		
viba_49823	AD/GMB/04/NIG/2020	cattle	100.0	0	O	EA-3		
viba_49511	NIG/77/2020	cattle	99.2	0	O	EA-3		
viba_49499	NIG/73/2020	cattle	99.2	0	O	EA-3		
viba_49515	NIG/78/2020	sheep	99.2	0	O	EA-3		
viba_49503	NIG/74/2020	cattle	99.2	0	O	EA-3		
viba_49779	PL/KAN/03/NIG/2020	cattle	99.2	0	O	EA-3		
viba_49787	PL/KAN/05/NIG/2020	cattle	99.1	0	O	EA-3		
viba_49843	KN/BMF/01/NIG/2020	cattle	99.1	0	O	EA-3		
viba_49807	PL/JE/019/NIG/2020	cattle	99.1	0	O	EA-3		

Most Closely Related Prototype Sequences

see <http://www.wrlfmd.org/fmdv-genome/fmd-prototype-strains>

sequence	virus name	Host	% Id.	# Ambig.	serotype	topotype	lineage	sublineage
viba_116	SUD/2/86	bovine	88.5	0	O	EA-3		
viba_854	ETH/1/2007	cattle	85.0	0	O	EA-3		
viba_50	UGA/17/98		84.9	0	O	EA-4		
viba_104	GHA/5/93	bovine	83.9	0	O	WA		
viba_408	ETH/3/2004	cattle	83.8	0	O	EA-3		
viba_30238	MUR/19/2016	cattle	83.5	0	O	ME-SA	Ind-2001	e
viba_285	UKG/35/2001	porcine	83.3	0	O	ME-SA	PanAsia	
viba_766	IRN/31/2009	cattle	83.1	0	O	ME-SA	PanAsia-2	FAR-09
viba_85	UGA/3/2002		82.9	0	O	EA-2		
viba_576	IND/R2/75		82.9	0	O	ME-SA		

Virus sample name:	AD/GMB/04/NIG/2020
Sender reference:	AD/GMB/04
Location of origin:	Gombi, Adamawa State
Country of origin:	Nigeria
Date of collection:	14/09/2020
Host species:	cattle
Serotype:	O
Topotype:	EA-3
Lineage:	
Sublineage:	
Sequence length:	633
Ambiguities:	0
Material submitted for sequencing:	n/a
Harvest date of material:	n/a
Primers:	n/a
Received for sequencing:	n/a
Created:	22/12/2021
Last updated:	22/12/2021
VIBASys IDs: sample 49821, genome 49822, sequence viba_49823, sequencing info 49824	

Most Closely Related Sequences

sequence	virus name	Host	% Id.	# Ambig.	serotype	topotype	lineage	sublineage
viba_49827	AD/GMB/05/NIG/2020	cattle	100.0	0	O	EA-3		
viba_49819	AD/GMB/02/NIG/2020	cattle	100.0	0	O	EA-3		
viba_49511	NIG/77/2020	cattle	99.2	0	O	EA-3		
viba_49499	NIG/73/2020	cattle	99.2	0	O	EA-3		
viba_49515	NIG/78/2020	sheep	99.2	0	O	EA-3		
viba_49503	NIG/74/2020	cattle	99.2	0	O	EA-3		
viba_49779	PL/KAN/03/NIG/2020	cattle	99.2	0	O	EA-3		
viba_49787	PL/KAN/05/NIG/2020	cattle	99.1	0	O	EA-3		
viba_49843	KN/BMF/01/NIG/2020	cattle	99.1	0	O	EA-3		
viba_49807	PL/JE/019/NIG/2020	cattle	99.1	0	O	EA-3		

Most Closely Related Prototype Sequences

see <http://www.wrlfmd.org/fmdv-genome/fmd-prototype-strains>

sequence	virus name	Host	% Id.	# Ambig.	serotype	topotype	lineage	sublineage
viba_116	SUD/2/86	bovine	88.5	0	O	EA-3		
viba_854	ETH/1/2007	cattle	85.0	0	O	EA-3		
viba_50	UGA/17/98		84.9	0	O	EA-4		
viba_104	GHA/5/93	bovine	83.9	0	O	WA		
viba_408	ETH/3/2004	cattle	83.8	0	O	EA-3		
viba_30238	MUR/19/2016	cattle	83.5	0	O	ME-SA	Ind-2001	e
viba_285	UKG/35/2001	porcine	83.3	0	O	ME-SA	PanAsia	
viba_766	IRN/31/2009	cattle	83.1	0	O	ME-SA	PanAsia-2	FAR-09
viba_85	UGA/3/2002		82.9	0	O	EA-2		
viba_576	IND/R2/75		82.9	0	O	ME-SA		

Virus sample name:	AD/GMB/05/NIG/2020
Sender reference:	AD/GMB/05
Location of origin:	Gombi, Adamawa State
Country of origin:	Nigeria
Date of collection:	14/09/2020
Host species:	cattle
Serotype:	O
Topotype:	EA-3
Lineage:	
Sublineage:	
Sequence length:	633
Ambiguities:	0
Material submitted for sequencing:	n/a
Harvest date of material:	n/a
Primers:	n/a
Received for sequencing:	n/a
Created:	22/12/2021
Last updated:	22/12/2021
VIBASys IDs: sample 49825, genome 49826, sequence viba_49827, sequencing info 49828	

Most Closely Related Sequences

sequence	virus name	Host	% Id.	# Ambig.	serotype	topotype	lineage	sublineage
viba_49823	AD/GMB/04/NIG/2020	cattle	100.0	0	O	EA-3		
viba_49819	AD/GMB/02/NIG/2020	cattle	100.0	0	O	EA-3		
viba_49511	NIG/77/2020	cattle	99.2	0	O	EA-3		
viba_49499	NIG/73/2020	cattle	99.2	0	O	EA-3		
viba_49515	NIG/78/2020	sheep	99.2	0	O	EA-3		
viba_49503	NIG/74/2020	cattle	99.2	0	O	EA-3		
viba_49779	PL/KAN/03/NIG/2020	cattle	99.2	0	O	EA-3		
viba_49787	PL/KAN/05/NIG/2020	cattle	99.1	0	O	EA-3		
viba_49843	KN/BMF/01/NIG/2020	cattle	99.1	0	O	EA-3		
viba_49807	PL/JE/019/NIG/2020	cattle	99.1	0	O	EA-3		

Most Closely Related Prototype Sequences

see <http://www.wrlfmd.org/fmdv-genome/fmd-prototype-strains>

sequence	virus name	Host	% Id.	# Ambig.	serotype	topotype	lineage	sublineage
viba_116	SUD/2/86	bovine	88.5	0	O	EA-3		
viba_854	ETH/1/2007	cattle	85.0	0	O	EA-3		
viba_50	UGA/17/98		84.9	0	O	EA-4		
viba_104	GHA/5/93	bovine	83.9	0	O	WA		
viba_408	ETH/3/2004	cattle	83.8	0	O	EA-3		
viba_30238	MUR/19/2016	cattle	83.5	0	O	ME-SA	Ind-2001	e
viba_285	UKG/35/2001	porcine	83.3	0	O	ME-SA	PanAsia	
viba_766	IRN/31/2009	cattle	83.1	0	O	ME-SA	PanAsia-2	FAR-09
viba_85	UGA/3/2002		82.9	0	O	EA-2		
viba_576	IND/R2/75		82.9	0	O	ME-SA		

Virus sample name:	BAU/BAU/01/NIG/2020
Sender reference:	BAU/BAU/01
Location of origin:	Bauchi, Bauchi State
Country of origin:	Nigeria
Date of collection:	14/09/2020
Host species:	cattle
Serotype:	O
Topotype:	EA-3
Lineage:	
Sublineage:	
Sequence length:	633
Ambiguities:	0
Material submitted for sequencing:	n/a
Harvest date of material:	n/a
Primers:	n/a
Received for sequencing:	n/a
Created:	22/12/2021
Last updated:	22/12/2021
VIBASys IDs: sample 49829, genome 49830, sequence viba_49831, sequencing info 49832	

Most Closely Related Sequences

sequence	virus name	Host	% Id.	# Ambig.	serotype	topotype	lineage	sublineage
viba_49523	NIG/88/2020	cattle	99.4	0	O	EA-3		
viba_49891	PL/JN/021/NIG/2020	cattle	99.2	0	O	EA-3		
viba_49911	PL/JN/026/NIG/2020	cattle	99.2	0	O	EA-3		
viba_49511	NIG/77/2020	cattle	99.2	0	O	EA-3		
viba_49919	PL/JN/028/NIG/2020	cattle	99.2	0	O	EA-3		
viba_49499	NIG/73/2020	cattle	99.2	0	O	EA-3		
viba_49515	NIG/78/2020	sheep	99.2	0	O	EA-3		
viba_49915	PL/JN/027/NIG/2020	cattle	99.2	0	O	EA-3		
viba_49895	PL/JN/022/NIG/2020	cattle	99.2	0	O	EA-3		
viba_49503	NIG/74/2020	cattle	99.2	0	O	EA-3		

Most Closely Related Prototype Sequences

see <http://www.wrlfmd.org/fmdv-genome/fmd-prototype-strains>

sequence	virus name	Host	% Id.	# Ambig.	serotype	topotype	lineage	sublineage
viba_116	SUD/2/86	bovine	88.6	0	O	EA-3		
viba_854	ETH/1/2007	cattle	85.8	0	O	EA-3		
viba_50	UGA/17/98		84.7	0	O	EA-4		
viba_104	GHA/5/93	bovine	84.4	0	O	WA		
viba_408	ETH/3/2004	cattle	84.3	0	O	EA-3		
viba_68	TAI/189/87	bovine	83.9	0	O	SEA		
viba_766	IRN/31/2009	cattle	83.9	0	O	ME-SA	PanAsia-2	FAR-09
viba_285	UKG/35/2001	porcine	83.7	0	O	ME-SA	PanAsia	
viba_85	UGA/3/2002		83.7	0	O	EA-2		
viba_30238	MUR/19/2016	cattle	83.7	0	O	ME-SA	Ind-2001	e

Virus sample name:	BAU/BAU/21/NIG/2020
Sender reference:	BAU/BAU/21
Location of origin:	Bauchi, Bauchi State
Country of origin:	Nigeria
Date of collection:	14/09/2020
Host species:	cattle
Serotype:	O
Topotype:	EA-3
Lineage:	
Sublineage:	
Sequence length:	633
Ambiguities:	0
Material submitted for sequencing:	n/a
Harvest date of material:	n/a
Primers:	n/a
Received for sequencing:	n/a
Created:	22/12/2021
Last updated:	22/12/2021
VIBASys IDs: sample 49833, genome 49834, sequence viba_49835, sequencing info 49836	

Most Closely Related Sequences

sequence	virus name	Host	% Id.	# Ambig.	serotype	topotype	lineage	sublineage
viba_49839	BAU/BAU/22/NIG/2020	cattle	100.0	0	O	EA-3		
viba_49779	PL/KAN/03/NIG/2020	cattle	99.4	0	O	EA-3		
viba_49787	PL/KAN/05/NIG/2020	cattle	99.2	0	O	EA-3		
viba_49843	KN/BMF/01/NIG/2020	cattle	99.2	0	O	EA-3		
viba_49807	PL/JE/019/NIG/2020	cattle	99.2	0	O	EA-3		
viba_49887	PL/JN/020/NIG/2020	cattle	99.2	0	O	EA-3		
viba_49511	NIG/77/2020	cattle	99.2	0	O	EA-3		
viba_49771	PL/KAN/01/NIG/2020	cattle	99.2	0	O	EA-3		
viba_49767	PL/KA/02/NIG/2020	cattle	99.2	0	O	EA-3		
viba_49499	NIG/73/2020	cattle	99.2	0	O	EA-3		

Most Closely Related Prototype Sequences

see <http://www.wrlfmd.org/fmdv-genome/fmd-prototype-strains>

sequence	virus name	Host	% Id.	# Ambig.	serotype	topotype	lineage	sublineage
viba_116	SUD/2/86	bovine	87.9	0	O	EA-3		
viba_50	UGA/17/98		86.0	0	O	EA-4		
viba_854	ETH/1/2007	cattle	85.3	0	O	EA-3		
viba_30238	MUR/19/2016	cattle	84.3	0	O	ME-SA	Ind-2001	e
viba_104	GHA/5/93	bovine	84.1	0	O	WA		
viba_68	TAI/189/87	bovine	84.1	0	O	SEA		
viba_408	ETH/3/2004	cattle	84.1	0	O	EA-3		
viba_302	CIV/8/99	bovine	83.8	0	O	WA		
viba_285	UKG/35/2001	porcine	83.7	0	O	ME-SA	PanAsia	
viba_523	K83/79		83.6	0	O	EA-1		

Virus sample name:	BAU/BAU/22/NIG/2020
Sender reference:	BAU/BAU/22
Location of origin:	Bauchi, Bauchi State
Country of origin:	Nigeria
Date of collection:	14/09/2020
Host species:	cattle
Serotype:	O
Topotype:	EA-3
Lineage:	
Sublineage:	
Sequence length:	633
Ambiguities:	0
Material submitted for sequencing:	n/a
Harvest date of material:	n/a
Primers:	n/a
Received for sequencing:	n/a
Created:	22/12/2021
Last updated:	22/12/2021
VIBASys IDs: sample 49837, genome 49838, sequence viba_49839, sequencing info 49840	

Most Closely Related Sequences

sequence	virus name	Host	% Id.	# Ambig.	serotype	topotype	lineage	sublineage
viba_49835	BAU/BAU/21/NIG/2020	cattle	100.0	0	O	EA-3		
viba_49779	PL/KAN/03/NIG/2020	cattle	99.4	0	O	EA-3		
viba_49787	PL/KAN/05/NIG/2020	cattle	99.2	0	O	EA-3		
viba_49843	KN/BMF/01/NIG/2020	cattle	99.2	0	O	EA-3		
viba_49807	PL/JE/019/NIG/2020	cattle	99.2	0	O	EA-3		
viba_49887	PL/JN/020/NIG/2020	cattle	99.2	0	O	EA-3		
viba_49511	NIG/77/2020	cattle	99.2	0	O	EA-3		
viba_49771	PL/KAN/01/NIG/2020	cattle	99.2	0	O	EA-3		
viba_49767	PL/KA/02/NIG/2020	cattle	99.2	0	O	EA-3		
viba_49499	NIG/73/2020	cattle	99.2	0	O	EA-3		

Most Closely Related Prototype Sequences

see <http://www.wrlfmd.org/fmdv-genome/fmd-prototype-strains>

sequence	virus name	Host	% Id.	# Ambig.	serotype	topotype	lineage	sublineage
viba_116	SUD/2/86	bovine	87.9	0	O	EA-3		
viba_50	UGA/17/98		86.0	0	O	EA-4		
viba_854	ETH/1/2007	cattle	85.3	0	O	EA-3		
viba_30238	MUR/19/2016	cattle	84.3	0	O	ME-SA	Ind-2001	e
viba_104	GHA/5/93	bovine	84.1	0	O	WA		
viba_68	TAI/189/87	bovine	84.1	0	O	SEA		
viba_408	ETH/3/2004	cattle	84.1	0	O	EA-3		
viba_302	CIV/8/99	bovine	83.8	0	O	WA		
viba_285	UKG/35/2001	porcine	83.7	0	O	ME-SA	PanAsia	
viba_523	K83/79		83.6	0	O	EA-1		

Virus sample name:	KN/BMF/01/NIG/2020
Sender reference:	KN/BMF/01
Location of origin:	Bunkure, Kano state
Country of origin:	Nigeria
Date of collection:	23/09/2020
Host species:	cattle
Serotype:	O
Topotype:	EA-3
Lineage:	
Sublineage:	
Sequence length:	633
Ambiguities:	0
Material submitted for sequencing:	n/a
Harvest date of material:	n/a
Primers:	n/a
Received for sequencing:	n/a
Created:	22/12/2021
Last updated:	22/12/2021
VIBASys IDs: sample 49841, genome 49842, sequence viba_49843, sequencing info 49844	

Most Closely Related Sequences

sequence	virus name	Host	% Id.	# Ambig.	serotype	topotype	lineage	sublineage
viba_49787	PL/KAN/05/NIG/2020	cattle	100.0	0	O	EA-3		
viba_49807	PL/JE/019/NIG/2020	cattle	100.0	0	O	EA-3		
viba_49887	PL/JN/020/NIG/2020	cattle	100.0	0	O	EA-3		
viba_49771	PL/KAN/01/NIG/2020	cattle	100.0	0	O	EA-3		
viba_49767	PL/KA/02/NIG/2020	cattle	100.0	0	O	EA-3		
viba_49803	PL/JE/017/NIG/2020	cattle	100.0	0	O	EA-3		
viba_49775	PL/KAN/02/NIG/2020	cattle	100.0	0	O	EA-3		
viba_49791	PL/KAN/06/NIG/2020	cattle	100.0	0	O	EA-3		
viba_49783	PL/KAN/04/NIG/2020	cattle	100.0	0	O	EA-3		
viba_49763	PL/KA/01/NIG/2020	cattle	100.0	0	O	EA-3		

Most Closely Related Prototype Sequences

see <http://www.wrlfmd.org/fmdv-genome/fmd-prototype-strains>

sequence	virus name	Host	% Id.	# Ambig.	serotype	topotype	lineage	sublineage
viba_116	SUD/2/86	bovine	88.2	0	O	EA-3		
viba_50	UGA/17/98		85.5	0	O	EA-4		
viba_854	ETH/1/2007	cattle	85.3	0	O	EA-3		
viba_104	GHA/5/93	bovine	84.4	0	O	WA		
viba_408	ETH/3/2004	cattle	84.1	0	O	EA-3		
viba_285	UKG/35/2001	porcine	83.7	0	O	ME-SA	PanAsia	
viba_30238	MUR/19/2016	cattle	83.7	0	O	ME-SA	Ind-2001	e
viba_85	UGA/3/2002		83.6	0	O	EA-2		
viba_68	TAI/189/87	bovine	83.6	0	O	SEA		
viba_766	IRN/31/2009	cattle	83.6	0	O	ME-SA	PanAsia-2	FAR-09

Virus sample name:	KN/BMF/02/NIG/2020
Sender reference:	KN/BMF/02
Location of origin:	Bunkure, Kano state
Country of origin:	Nigeria
Date of collection:	23/09/2020
Host species:	cattle
Serotype:	O
Topotype:	EA-3
Lineage:	
Sublineage:	
Sequence length:	633
Ambiguities:	0
Material submitted for sequencing:	n/a
Harvest date of material:	n/a
Primers:	n/a
Received for sequencing:	n/a
Created:	22/12/2021
Last updated:	22/12/2021
VIBASys IDs: sample 49845, genome 49846, sequence viba_49847, sequencing info 49848	

Most Closely Related Sequences

sequence	virus name	Host	% Id.	# Ambig.	serotype	topotype	lineage	sublineage
viba_49851	KN/BMF/03/NIG/2020	cattle	100.0	0	O	EA-3		
viba_49859	KN/RMG/01/NIG/2020	cattle	100.0	0	O	EA-3		
viba_49855	KN/BMF/04/NIG/2020	cattle	100.0	0	O	EA-3		
viba_49483	NIG/54/2020	cattle	99.5	0	O	EA-3		
viba_49475	NIG/52/2020	cattle	99.5	0	O	EA-3		
viba_49487	NIG/55/2020	cattle	99.5	0	O	EA-3		
viba_49511	NIG/77/2020	cattle	99.4	0	O	EA-3		
viba_49499	NIG/73/2020	cattle	99.4	0	O	EA-3		
viba_49515	NIG/78/2020	sheep	99.4	0	O	EA-3		
viba_49479	NIG/53/2020	cattle	99.4	0	O	EA-3		

Most Closely Related Prototype Sequences

see <http://www.wrlfmd.org/fmdv-genome/fmd-prototype-strains>

sequence	virus name	Host	% Id.	# Ambig.	serotype	topotype	lineage	sublineage
viba_116	SUD/2/86	bovine	88.3	0	O	EA-3		
viba_854	ETH/1/2007	cattle	85.2	0	O	EA-3		
viba_50	UGA/17/98		85.0	0	O	EA-4		
viba_104	GHA/5/93	bovine	84.4	0	O	WA		
viba_408	ETH/3/2004	cattle	84.0	0	O	EA-3		
viba_285	UKG/35/2001	porcine	83.4	0	O	ME-SA	PanAsia	
viba_30238	MUR/19/2016	cattle	83.4	0	O	ME-SA	Ind-2001	e
viba_302	CIV/8/99	bovine	83.3	0	O	WA		
viba_68	TAI/189/87	bovine	83.3	0	O	SEA		
viba_766	IRN/31/2009	cattle	83.3	0	O	ME-SA	PanAsia-2	FAR-09

Virus sample name:	KN/BMF/03/NIG/2020
Sender reference:	KN/BMF/03
Location of origin:	Bunkure, Kano state
Country of origin:	Nigeria
Date of collection:	23/09/2020
Host species:	cattle
Serotype:	O
Topotype:	EA-3
Lineage:	
Sublineage:	
Sequence length:	633
Ambiguities:	0
Material submitted for sequencing:	n/a
Harvest date of material:	n/a
Primers:	n/a
Received for sequencing:	n/a
Created:	22/12/2021
Last updated:	22/12/2021
VIBASys IDs: sample 49849, genome 49850, sequence viba_49851, sequencing info 49852	

Most Closely Related Sequences

sequence	virus name	Host	% Id.	# Ambig.	serotype	topotype	lineage	sublineage
viba_49847	KN/BMF/02/NIG/2020	cattle	100.0	0	O	EA-3		
viba_49859	KN/RMG/01/NIG/2020	cattle	100.0	0	O	EA-3		
viba_49855	KN/BMF/04/NIG/2020	cattle	100.0	0	O	EA-3		
viba_49483	NIG/54/2020	cattle	99.5	0	O	EA-3		
viba_49475	NIG/52/2020	cattle	99.5	0	O	EA-3		
viba_49487	NIG/55/2020	cattle	99.5	0	O	EA-3		
viba_49511	NIG/77/2020	cattle	99.4	0	O	EA-3		
viba_49499	NIG/73/2020	cattle	99.4	0	O	EA-3		
viba_49515	NIG/78/2020	sheep	99.4	0	O	EA-3		
viba_49479	NIG/53/2020	cattle	99.4	0	O	EA-3		

Most Closely Related Prototype Sequences

see <http://www.wrlfmd.org/fmdv-genome/fmd-prototype-strains>

sequence	virus name	Host	% Id.	# Ambig.	serotype	topotype	lineage	sublineage
viba_116	SUD/2/86	bovine	88.3	0	O	EA-3		
viba_854	ETH/1/2007	cattle	85.2	0	O	EA-3		
viba_50	UGA/17/98		85.0	0	O	EA-4		
viba_104	GHA/5/93	bovine	84.4	0	O	WA		
viba_408	ETH/3/2004	cattle	84.0	0	O	EA-3		
viba_285	UKG/35/2001	porcine	83.4	0	O	ME-SA	PanAsia	
viba_30238	MUR/19/2016	cattle	83.4	0	O	ME-SA	Ind-2001	e
viba_302	CIV/8/99	bovine	83.3	0	O	WA		
viba_68	TAI/189/87	bovine	83.3	0	O	SEA		
viba_766	IRN/31/2009	cattle	83.3	0	O	ME-SA	PanAsia-2	FAR-09

Virus sample name:	KN/BMF/04/NIG/2020
Sender reference:	KN/BMF/04
Location of origin:	Bunkure, Kano state
Country of origin:	Nigeria
Date of collection:	23/09/2020
Host species:	cattle
Serotype:	O
Topotype:	EA-3
Lineage:	
Sublineage:	
Sequence length:	633
Ambiguities:	0
Material submitted for sequencing:	n/a
Harvest date of material:	n/a
Primers:	n/a
Received for sequencing:	n/a
Created:	22/12/2021
Last updated:	22/12/2021
VIBASys IDs: sample 49853, genome 49854, sequence viba_49855, sequencing info 49856	

Most Closely Related Sequences

sequence	virus name	Host	% Id.	# Ambig.	serotype	topotype	lineage	sublineage
viba_49851	KN/BMF/03/NIG/2020	cattle	100.0	0	O	EA-3		
viba_49847	KN/BMF/02/NIG/2020	cattle	100.0	0	O	EA-3		
viba_49859	KN/RMG/01/NIG/2020	cattle	100.0	0	O	EA-3		
viba_49483	NIG/54/2020	cattle	99.5	0	O	EA-3		
viba_49475	NIG/52/2020	cattle	99.5	0	O	EA-3		
viba_49487	NIG/55/2020	cattle	99.5	0	O	EA-3		
viba_49511	NIG/77/2020	cattle	99.4	0	O	EA-3		
viba_49499	NIG/73/2020	cattle	99.4	0	O	EA-3		
viba_49515	NIG/78/2020	sheep	99.4	0	O	EA-3		
viba_49479	NIG/53/2020	cattle	99.4	0	O	EA-3		

Most Closely Related Prototype Sequences

see <http://www.wrlfmd.org/fmdv-genome/fmd-prototype-strains>

sequence	virus name	Host	% Id.	# Ambig.	serotype	topotype	lineage	sublineage
viba_116	SUD/2/86	bovine	88.3	0	O	EA-3		
viba_854	ETH/1/2007	cattle	85.2	0	O	EA-3		
viba_50	UGA/17/98		85.0	0	O	EA-4		
viba_104	GHA/5/93	bovine	84.4	0	O	WA		
viba_408	ETH/3/2004	cattle	84.0	0	O	EA-3		
viba_285	UKG/35/2001	porcine	83.4	0	O	ME-SA	PanAsia	
viba_30238	MUR/19/2016	cattle	83.4	0	O	ME-SA	Ind-2001	e
viba_302	CIV/8/99	bovine	83.3	0	O	WA		
viba_68	TAI/189/87	bovine	83.3	0	O	SEA		
viba_766	IRN/31/2009	cattle	83.3	0	O	ME-SA	PanAsia-2	FAR-09

Virus sample name:	KN/RMG/01/NIG/2020
Sender reference:	KN/RMG/01
Location of origin:	Remigo, Kano State
Country of origin:	Nigeria
Date of collection:	23/09/2020
Host species:	cattle
Serotype:	O
Topotype:	EA-3
Lineage:	
Sublineage:	
Sequence length:	633
Ambiguities:	0
Material submitted for sequencing:	n/a
Harvest date of material:	n/a
Primers:	n/a
Received for sequencing:	n/a
Created:	22/12/2021
Last updated:	22/12/2021
VIBASys IDs: sample 49857, genome 49858, sequence viba_49859, sequencing info 49860	

Most Closely Related Sequences

sequence	virus name	Host	% Id.	# Ambig.	serotype	topotype	lineage	sublineage
viba_49851	KN/BMF/03/NIG/2020	cattle	100.0	0	O	EA-3		
viba_49847	KN/BMF/02/NIG/2020	cattle	100.0	0	O	EA-3		
viba_49855	KN/BMF/04/NIG/2020	cattle	100.0	0	O	EA-3		
viba_49483	NIG/54/2020	cattle	99.5	0	O	EA-3		
viba_49475	NIG/52/2020	cattle	99.5	0	O	EA-3		
viba_49487	NIG/55/2020	cattle	99.5	0	O	EA-3		
viba_49511	NIG/77/2020	cattle	99.4	0	O	EA-3		
viba_49499	NIG/73/2020	cattle	99.4	0	O	EA-3		
viba_49515	NIG/78/2020	sheep	99.4	0	O	EA-3		
viba_49479	NIG/53/2020	cattle	99.4	0	O	EA-3		

Most Closely Related Prototype Sequences

see <http://www.wrlfmd.org/fmdv-genome/fmd-prototype-strains>

sequence	virus name	Host	% Id.	# Ambig.	serotype	topotype	lineage	sublineage
viba_116	SUD/2/86	bovine	88.3	0	O	EA-3		
viba_854	ETH/1/2007	cattle	85.2	0	O	EA-3		
viba_50	UGA/17/98		85.0	0	O	EA-4		
viba_104	GHA/5/93	bovine	84.4	0	O	WA		
viba_408	ETH/3/2004	cattle	84.0	0	O	EA-3		
viba_285	UKG/35/2001	porcine	83.4	0	O	ME-SA	PanAsia	
viba_30238	MUR/19/2016	cattle	83.4	0	O	ME-SA	Ind-2001	e
viba_302	CIV/8/99	bovine	83.3	0	O	WA		
viba_68	TAI/189/87	bovine	83.3	0	O	SEA		
viba_766	IRN/31/2009	cattle	83.3	0	O	ME-SA	PanAsia-2	FAR-09

Virus sample name:	PL/BK/02/NIG/2020
Sender reference:	PL/BK/02
Location of origin:	Bokkos, Plateau state
Country of origin:	Nigeria
Date of collection:	24/09/2020
Host species:	cattle
Serotype:	O
Topotype:	EA-3
Lineage:	
Sublineage:	
Sequence length:	633
Ambiguities:	0
Material submitted for sequencing:	n/a
Harvest date of material:	n/a
Primers:	n/a
Received for sequencing:	n/a
Created:	22/12/2021
Last updated:	22/12/2021
VIBASys IDs: sample 49861, genome 49862, sequence viba_49863, sequencing info 49864	

Most Closely Related Sequences

sequence	virus name	Host	% Id.	# Ambig.	serotype	topotype	lineage	sublineage
viba_49883	PL/BK/07/NIG/2020	cattle	100.0	0	O	EA-3		
viba_49867	PL/BK/03/NIG/2020	cattle	100.0	0	O	EA-3		
viba_49879	PL/BK/06/NIG/2020	cattle	100.0	0	O	EA-3		
viba_49875	PL/BK/05/NIG/2020	cattle	100.0	0	O	EA-3		
viba_49491	NIG/58/2020	cattle	100.0	0	O	EA-3		
viba_49871	PL/BK/04/NIG/2020	cattle	99.8	0	O	EA-3		
viba_49526	NIG/92/2020	cattle	99.7	0	O	EA-3		
viba_49534	NIG/94/2020	cattle	99.7	0	O	EA-3		
viba_49530	NIG/93/2020	cattle	99.7	0	O	EA-3		
viba_49546	NIG/97/2020	cattle	99.5	0	O	EA-3		

Most Closely Related Prototype Sequences

see <http://www.wrlfmd.org/fmdv-genome/fmd-prototype-strains>

sequence	virus name	Host	% Id.	# Ambig.	serotype	topotype	lineage	sublineage
viba_116	SUD/2/86	bovine	88.2	0	O	EA-3		
viba_854	ETH/1/2007	cattle	85.6	0	O	EA-3		
viba_50	UGA/17/98		85.2	0	O	EA-4		
viba_104	GHA/5/93	bovine	84.1	0	O	WA		
viba_408	ETH/3/2004	cattle	84.1	0	O	EA-3		
viba_285	UKG/35/2001	porcine	83.6	0	O	ME-SA	PanAsia	
viba_85	UGA/3/2002		83.6	0	O	EA-2		
viba_30238	MUR/19/2016	cattle	83.4	0	O	ME-SA	Ind-2001	e
viba_523	K83/79		83.3	0	O	EA-1		
viba_68	TAI/189/87	bovine	83.3	0	O	SEA		

Virus sample name:	PL/BK/03/NIG/2020
Sender reference:	PL/BK/03
Location of origin:	Bokkos, Plateau state
Country of origin:	Nigeria
Date of collection:	24/09/2020
Host species:	cattle
Serotype:	O
Topotype:	EA-3
Lineage:	
Sublineage:	
Sequence length:	633
Ambiguities:	0
Material submitted for sequencing:	n/a
Harvest date of material:	n/a
Primers:	n/a
Received for sequencing:	n/a
Created:	22/12/2021
Last updated:	22/12/2021
VIBASys IDs: sample 49865, genome 49866, sequence viba_49867, sequencing info 49868	

Most Closely Related Sequences

sequence	virus name	Host	% Id.	# Ambig.	serotype	topotype	lineage	sublineage
viba_49883	PL/BK/07/NIG/2020	cattle	100.0	0	O	EA-3		
viba_49879	PL/BK/06/NIG/2020	cattle	100.0	0	O	EA-3		
viba_49875	PL/BK/05/NIG/2020	cattle	100.0	0	O	EA-3		
viba_49863	PL/BK/02/NIG/2020	cattle	100.0	0	O	EA-3		
viba_49491	NIG/58/2020	cattle	100.0	0	O	EA-3		
viba_49871	PL/BK/04/NIG/2020	cattle	99.8	0	O	EA-3		
viba_49526	NIG/92/2020	cattle	99.7	0	O	EA-3		
viba_49534	NIG/94/2020	cattle	99.7	0	O	EA-3		
viba_49530	NIG/93/2020	cattle	99.7	0	O	EA-3		
viba_49546	NIG/97/2020	cattle	99.5	0	O	EA-3		

Most Closely Related Prototype Sequences

see <http://www.wrlfmd.org/fmdv-genome/fmd-prototype-strains>

sequence	virus name	Host	% Id.	# Ambig.	serotype	topotype	lineage	sublineage
viba_116	SUD/2/86	bovine	88.2	0	O	EA-3		
viba_854	ETH/1/2007	cattle	85.6	0	O	EA-3		
viba_50	UGA/17/98		85.2	0	O	EA-4		
viba_104	GHA/5/93	bovine	84.1	0	O	WA		
viba_408	ETH/3/2004	cattle	84.1	0	O	EA-3		
viba_285	UKG/35/2001	porcine	83.6	0	O	ME-SA	PanAsia	
viba_85	UGA/3/2002		83.6	0	O	EA-2		
viba_30238	MUR/19/2016	cattle	83.4	0	O	ME-SA	Ind-2001	e
viba_523	K83/79		83.3	0	O	EA-1		
viba_68	TAI/189/87	bovine	83.3	0	O	SEA		

Virus sample name:	PL/BK/04/NIG/2020
Sender reference:	PL/BK/04
Location of origin:	Bokkos, Plateau state
Country of origin:	Nigeria
Date of collection:	24/09/2020
Host species:	cattle
Serotype:	O
Topotype:	EA-3
Lineage:	
Sublineage:	
Sequence length:	633
Ambiguities:	0
Material submitted for sequencing:	n/a
Harvest date of material:	n/a
Primers:	n/a
Received for sequencing:	n/a
Created:	22/12/2021
Last updated:	22/12/2021
VIBASys IDs: sample 49869, genome 49870, sequence viba_49871, sequencing info 49872	

Most Closely Related Sequences

sequence	virus name	Host	% Id.	# Ambig.	serotype	topotype	lineage	sublineage
viba_49883	PL/BK/07/NIG/2020	cattle	99.8	0	O	EA-3		
viba_49867	PL/BK/03/NIG/2020	cattle	99.8	0	O	EA-3		
viba_49879	PL/BK/06/NIG/2020	cattle	99.8	0	O	EA-3		
viba_49875	PL/BK/05/NIG/2020	cattle	99.8	0	O	EA-3		
viba_49863	PL/BK/02/NIG/2020	cattle	99.8	0	O	EA-3		
viba_49491	NIG/58/2020	cattle	99.8	0	O	EA-3		
viba_49526	NIG/92/2020	cattle	99.5	0	O	EA-3		
viba_49534	NIG/94/2020	cattle	99.5	0	O	EA-3		
viba_49530	NIG/93/2020	cattle	99.5	0	O	EA-3		
viba_49546	NIG/97/2020	cattle	99.4	0	O	EA-3		

Most Closely Related Prototype Sequences

see <http://www.wrlfmd.org/fmdv-genome/fmd-prototype-strains>

sequence	virus name	Host	% Id.	# Ambig.	serotype	topotype	lineage	sublineage
viba_116	SUD/2/86	bovine	88.0	0	O	EA-3		
viba_854	ETH/1/2007	cattle	85.8	0	O	EA-3		
viba_50	UGA/17/98		85.3	0	O	EA-4		
viba_408	ETH/3/2004	cattle	84.3	0	O	EA-3		
viba_104	GHA/5/93	bovine	84.2	0	O	WA		
viba_285	UKG/35/2001	porcine	83.7	0	O	ME-SA	PanAsia	
viba_85	UGA/3/2002		83.7	0	O	EA-2		
viba_68	TAI/189/87	bovine	83.5	0	O	SEA		
viba_523	K83/79		83.4	0	O	EA-1		
viba_766	IRN/31/2009	cattle	83.4	0	O	ME-SA	PanAsia-2	FAR-09

Virus sample name:	PL/BK/05/NIG/2020
Sender reference:	PL/BK/05
Location of origin:	Bokkos, Plateau state
Country of origin:	Nigeria
Date of collection:	24/09/2020
Host species:	cattle
Serotype:	O
Topotype:	EA-3
Lineage:	
Sublineage:	
Sequence length:	633
Ambiguities:	0
Material submitted for sequencing:	n/a
Harvest date of material:	n/a
Primers:	n/a
Received for sequencing:	n/a
Created:	22/12/2021
Last updated:	22/12/2021
VIBASys IDs: sample 49873, genome 49874, sequence viba_49875, sequencing info 49876	

Most Closely Related Sequences

sequence	virus name	Host	% Id.	# Ambig.	serotype	topotype	lineage	sublineage
viba_49883	PL/BK/07/NIG/2020	cattle	100.0	0	O	EA-3		
viba_49867	PL/BK/03/NIG/2020	cattle	100.0	0	O	EA-3		
viba_49879	PL/BK/06/NIG/2020	cattle	100.0	0	O	EA-3		
viba_49863	PL/BK/02/NIG/2020	cattle	100.0	0	O	EA-3		
viba_49491	NIG/58/2020	cattle	100.0	0	O	EA-3		
viba_49871	PL/BK/04/NIG/2020	cattle	99.8	0	O	EA-3		
viba_49526	NIG/92/2020	cattle	99.7	0	O	EA-3		
viba_49534	NIG/94/2020	cattle	99.7	0	O	EA-3		
viba_49530	NIG/93/2020	cattle	99.7	0	O	EA-3		
viba_49546	NIG/97/2020	cattle	99.5	0	O	EA-3		

Most Closely Related Prototype Sequences

see <http://www.wrlfmd.org/fmdv-genome/fmd-prototype-strains>

sequence	virus name	Host	% Id.	# Ambig.	serotype	topotype	lineage	sublineage
viba_116	SUD/2/86	bovine	88.2	0	O	EA-3		
viba_854	ETH/1/2007	cattle	85.6	0	O	EA-3		
viba_50	UGA/17/98		85.2	0	O	EA-4		
viba_104	GHA/5/93	bovine	84.1	0	O	WA		
viba_408	ETH/3/2004	cattle	84.1	0	O	EA-3		
viba_285	UKG/35/2001	porcine	83.6	0	O	ME-SA	PanAsia	
viba_85	UGA/3/2002		83.6	0	O	EA-2		
viba_30238	MUR/19/2016	cattle	83.4	0	O	ME-SA	Ind-2001	e
viba_523	K83/79		83.3	0	O	EA-1		
viba_68	TAI/189/87	bovine	83.3	0	O	SEA		

Virus sample name:	PL/BK/06/NIG/2020
Sender reference:	PL/BK/06
Location of origin:	Bokkos, Plateau state
Country of origin:	Nigeria
Date of collection:	24/09/2020
Host species:	cattle
Serotype:	O
Topotype:	EA-3
Lineage:	
Sublineage:	
Sequence length:	633
Ambiguities:	0
Material submitted for sequencing:	n/a
Harvest date of material:	n/a
Primers:	n/a
Received for sequencing:	n/a
Created:	22/12/2021
Last updated:	22/12/2021
VIBASys IDs: sample 49877, genome 49878, sequence viba_49879, sequencing info 49880	

Most Closely Related Sequences

sequence	virus name	Host	% Id.	# Ambig.	serotype	topotype	lineage	sublineage
viba_49883	PL/BK/07/NIG/2020	cattle	100.0	0	O	EA-3		
viba_49867	PL/BK/03/NIG/2020	cattle	100.0	0	O	EA-3		
viba_49875	PL/BK/05/NIG/2020	cattle	100.0	0	O	EA-3		
viba_49863	PL/BK/02/NIG/2020	cattle	100.0	0	O	EA-3		
viba_49491	NIG/58/2020	cattle	100.0	0	O	EA-3		
viba_49871	PL/BK/04/NIG/2020	cattle	99.8	0	O	EA-3		
viba_49526	NIG/92/2020	cattle	99.7	0	O	EA-3		
viba_49534	NIG/94/2020	cattle	99.7	0	O	EA-3		
viba_49530	NIG/93/2020	cattle	99.7	0	O	EA-3		
viba_49546	NIG/97/2020	cattle	99.5	0	O	EA-3		

Most Closely Related Prototype Sequences

see <http://www.wrlfmd.org/fmdv-genome/fmd-prototype-strains>

sequence	virus name	Host	% Id.	# Ambig.	serotype	topotype	lineage	sublineage
viba_116	SUD/2/86	bovine	88.2	0	O	EA-3		
viba_854	ETH/1/2007	cattle	85.6	0	O	EA-3		
viba_50	UGA/17/98		85.2	0	O	EA-4		
viba_104	GHA/5/93	bovine	84.1	0	O	WA		
viba_408	ETH/3/2004	cattle	84.1	0	O	EA-3		
viba_285	UKG/35/2001	porcine	83.6	0	O	ME-SA	PanAsia	
viba_85	UGA/3/2002		83.6	0	O	EA-2		
viba_30238	MUR/19/2016	cattle	83.4	0	O	ME-SA	Ind-2001	e
viba_523	K83/79		83.3	0	O	EA-1		
viba_68	TAI/189/87	bovine	83.3	0	O	SEA		

Virus sample name:	PL/BK/07/NIG/2020
Sender reference:	PL/BK/07
Location of origin:	Bokkos, Plateau state
Country of origin:	Nigeria
Date of collection:	24/09/2020
Host species:	cattle
Serotype:	O
Topotype:	EA-3
Lineage:	
Sublineage:	
Sequence length:	633
Ambiguities:	0
Material submitted for sequencing:	n/a
Harvest date of material:	n/a
Primers:	n/a
Received for sequencing:	n/a
Created:	22/12/2021
Last updated:	22/12/2021
VIBASys IDs: sample 49881, genome 49882, sequence viba_49883, sequencing info 49884	

Most Closely Related Sequences

sequence	virus name	Host	% Id.	# Ambig.	serotype	topotype	lineage	sublineage
viba_49867	PL/BK/03/NIG/2020	cattle	100.0	0	O	EA-3		
viba_49879	PL/BK/06/NIG/2020	cattle	100.0	0	O	EA-3		
viba_49875	PL/BK/05/NIG/2020	cattle	100.0	0	O	EA-3		
viba_49863	PL/BK/02/NIG/2020	cattle	100.0	0	O	EA-3		
viba_49491	NIG/58/2020	cattle	100.0	0	O	EA-3		
viba_49871	PL/BK/04/NIG/2020	cattle	99.8	0	O	EA-3		
viba_49526	NIG/92/2020	cattle	99.7	0	O	EA-3		
viba_49534	NIG/94/2020	cattle	99.7	0	O	EA-3		
viba_49530	NIG/93/2020	cattle	99.7	0	O	EA-3		
viba_49546	NIG/97/2020	cattle	99.5	0	O	EA-3		

Most Closely Related Prototype Sequences

see <http://www.wrlfmd.org/fmdv-genome/fmd-prototype-strains>

sequence	virus name	Host	% Id.	# Ambig.	serotype	topotype	lineage	sublineage
viba_116	SUD/2/86	bovine	88.2	0	O	EA-3		
viba_854	ETH/1/2007	cattle	85.6	0	O	EA-3		
viba_50	UGA/17/98		85.2	0	O	EA-4		
viba_104	GHA/5/93	bovine	84.1	0	O	WA		
viba_408	ETH/3/2004	cattle	84.1	0	O	EA-3		
viba_285	UKG/35/2001	porcine	83.6	0	O	ME-SA	PanAsia	
viba_85	UGA/3/2002		83.6	0	O	EA-2		
viba_30238	MUR/19/2016	cattle	83.4	0	O	ME-SA	Ind-2001	e
viba_523	K83/79		83.3	0	O	EA-1		
viba_68	TAI/189/87	bovine	83.3	0	O	SEA		

Virus sample name:	PL/JN/020/NIG/2020
Sender reference:	PL/JN/020
Location of origin:	Jos North, Plateau State
Country of origin:	Nigeria
Date of collection:	25/09/2020
Host species:	cattle
Serotype:	O
Topotype:	EA-3
Lineage:	
Sublineage:	
Sequence length:	633
Ambiguities:	0
Material submitted for sequencing:	n/a
Harvest date of material:	n/a
Primers:	n/a
Received for sequencing:	n/a
Created:	22/12/2021
Last updated:	22/12/2021
VIBASys IDs: sample 49885, genome 49886, sequence viba_49887, sequencing info 49888	

Most Closely Related Sequences

sequence	virus name	Host	% Id.	# Ambig.	serotype	topotype	lineage	sublineage
viba_49787	PL/KAN/05/NIG/2020	cattle	100.0	0	O	EA-3		
viba_49843	KN/BMF/01/NIG/2020	cattle	100.0	0	O	EA-3		
viba_49807	PL/JE/019/NIG/2020	cattle	100.0	0	O	EA-3		
viba_49771	PL/KAN/01/NIG/2020	cattle	100.0	0	O	EA-3		
viba_49767	PL/KA/02/NIG/2020	cattle	100.0	0	O	EA-3		
viba_49803	PL/JE/017/NIG/2020	cattle	100.0	0	O	EA-3		
viba_49775	PL/KAN/02/NIG/2020	cattle	100.0	0	O	EA-3		
viba_49791	PL/KAN/06/NIG/2020	cattle	100.0	0	O	EA-3		
viba_49783	PL/KAN/04/NIG/2020	cattle	100.0	0	O	EA-3		
viba_49763	PL/KA/01/NIG/2020	cattle	100.0	0	O	EA-3		

Most Closely Related Prototype Sequences

see <http://www.wrlfmd.org/fmdv-genome/fmd-prototype-strains>

sequence	virus name	Host	% Id.	# Ambig.	serotype	topotype	lineage	sublineage
viba_116	SUD/2/86	bovine	88.2	0	O	EA-3		
viba_50	UGA/17/98		85.5	0	O	EA-4		
viba_854	ETH/1/2007	cattle	85.3	0	O	EA-3		
viba_104	GHA/5/93	bovine	84.4	0	O	WA		
viba_408	ETH/3/2004	cattle	84.1	0	O	EA-3		
viba_285	UKG/35/2001	porcine	83.7	0	O	ME-SA	PanAsia	
viba_30238	MUR/19/2016	cattle	83.7	0	O	ME-SA	Ind-2001	e
viba_85	UGA/3/2002		83.6	0	O	EA-2		
viba_68	TAI/189/87	bovine	83.6	0	O	SEA		
viba_766	IRN/31/2009	cattle	83.6	0	O	ME-SA	PanAsia-2	FAR-09

Virus sample name:	PL/JN/021/NIG/2020
Sender reference:	PL/JN/021
Location of origin:	Jos North, Plateau State
Country of origin:	Nigeria
Date of collection:	25/09/2020
Host species:	cattle
Serotype:	O
Topotype:	EA-3
Lineage:	
Sublineage:	
Sequence length:	633
Ambiguities:	0
Material submitted for sequencing:	n/a
Harvest date of material:	n/a
Primers:	n/a
Received for sequencing:	n/a
Created:	22/12/2021
Last updated:	22/12/2021
VIBASys IDs: sample 49889, genome 49890, sequence viba_49891, sequencing info 49892	

Most Closely Related Sequences

sequence	virus name	Host	% Id.	# Ambig.	serotype	topotype	lineage	sublineage
viba_49911	PL/JN/026/NIG/2020	cattle	100.0	0	O	EA-3		
viba_49919	PL/JN/028/NIG/2020	cattle	100.0	0	O	EA-3		
viba_49915	PL/JN/027/NIG/2020	cattle	100.0	0	O	EA-3		
viba_49895	PL/JN/022/NIG/2020	cattle	100.0	0	O	EA-3		
viba_49907	PL/JN/025/NIG/2020	cattle	100.0	0	O	EA-3		
viba_49811	PL/BK/030/NIG/2020	cattle	100.0	0	O	EA-3		
viba_49815	PL/BK/033/NIG/2020	cattle	100.0	0	O	EA-3		
viba_49899	PL/JN/023/NIG/2020	cattle	100.0	0	O	EA-3		
viba_49903	PL/JN/024/NIG/2020	cattle	100.0	0	O	EA-3		
viba_49923	PL/JN/029/NIG/2020	cattle	100.0	0	O	EA-3		

Most Closely Related Prototype Sequences

see <http://www.wrlfmd.org/fmdv-genome/fmd-prototype-strains>

sequence	virus name	Host	% Id.	# Ambig.	serotype	topotype	lineage	sublineage
viba_116	SUD/2/86	bovine	88.6	0	O	EA-3		
viba_854	ETH/1/2007	cattle	85.5	0	O	EA-3		
viba_50	UGA/17/98		85.3	0	O	EA-4		
viba_104	GHA/5/93	bovine	84.4	0	O	WA		
viba_408	ETH/3/2004	cattle	84.3	0	O	EA-3		
viba_285	UKG/35/2001	porcine	83.7	0	O	ME-SA	PanAsia	
viba_85	UGA/3/2002		83.7	0	O	EA-2		
viba_30238	MUR/19/2016	cattle	83.7	0	O	ME-SA	Ind-2001	e
viba_523	K83/79		83.6	0	O	EA-1		
viba_68	TAI/189/87	bovine	83.6	0	O	SEA		

Virus sample name:	PL/JN/022/NIG/2020
Sender reference:	PL/JN/022
Location of origin:	Jos North, Plateau State
Country of origin:	Nigeria
Date of collection:	25/09/2020
Host species:	cattle
Serotype:	O
Topotype:	EA-3
Lineage:	
Sublineage:	
Sequence length:	633
Ambiguities:	0
Material submitted for sequencing:	n/a
Harvest date of material:	n/a
Primers:	n/a
Received for sequencing:	n/a
Created:	22/12/2021
Last updated:	22/12/2021
VIBASys IDs: sample 49893, genome 49894, sequence viba_49895, sequencing info 49896	

Most Closely Related Sequences

sequence	virus name	Host	% Id.	# Ambig.	serotype	topotype	lineage	sublineage
viba_49891	PL/JN/021/NIG/2020	cattle	100.0	0	O	EA-3		
viba_49911	PL/JN/026/NIG/2020	cattle	100.0	0	O	EA-3		
viba_49919	PL/JN/028/NIG/2020	cattle	100.0	0	O	EA-3		
viba_49915	PL/JN/027/NIG/2020	cattle	100.0	0	O	EA-3		
viba_49907	PL/JN/025/NIG/2020	cattle	100.0	0	O	EA-3		
viba_49811	PL/BK/030/NIG/2020	cattle	100.0	0	O	EA-3		
viba_49815	PL/BK/033/NIG/2020	cattle	100.0	0	O	EA-3		
viba_49899	PL/JN/023/NIG/2020	cattle	100.0	0	O	EA-3		
viba_49903	PL/JN/024/NIG/2020	cattle	100.0	0	O	EA-3		
viba_49923	PL/JN/029/NIG/2020	cattle	100.0	0	O	EA-3		

Most Closely Related Prototype Sequences

see <http://www.wrlfmd.org/fmdv-genome/fmd-prototype-strains>

sequence	virus name	Host	% Id.	# Ambig.	serotype	topotype	lineage	sublineage
viba_116	SUD/2/86	bovine	88.6	0	O	EA-3		
viba_854	ETH/1/2007	cattle	85.5	0	O	EA-3		
viba_50	UGA/17/98		85.3	0	O	EA-4		
viba_104	GHA/5/93	bovine	84.4	0	O	WA		
viba_408	ETH/3/2004	cattle	84.3	0	O	EA-3		
viba_285	UKG/35/2001	porcine	83.7	0	O	ME-SA	PanAsia	
viba_85	UGA/3/2002		83.7	0	O	EA-2		
viba_30238	MUR/19/2016	cattle	83.7	0	O	ME-SA	Ind-2001	e
viba_523	K83/79		83.6	0	O	EA-1		
viba_68	TAI/189/87	bovine	83.6	0	O	SEA		

Virus sample name:	PL/JN/023/NIG/2020
Sender reference:	PL/JN/023
Location of origin:	Jos North, Plateau State
Country of origin:	Nigeria
Date of collection:	25/09/2020
Host species:	cattle
Serotype:	O
Topotype:	EA-3
Lineage:	
Sublineage:	
Sequence length:	633
Ambiguities:	0
Material submitted for sequencing:	n/a
Harvest date of material:	n/a
Primers:	n/a
Received for sequencing:	n/a
Created:	22/12/2021
Last updated:	22/12/2021
VIBASys IDs: sample 49897, genome 49898, sequence viba_49899, sequencing info 49900	

Most Closely Related Sequences

sequence	virus name	Host	% Id.	# Ambig.	serotype	topotype	lineage	sublineage
viba_49891	PL/JN/021/NIG/2020	cattle	100.0	0	O	EA-3		
viba_49911	PL/JN/026/NIG/2020	cattle	100.0	0	O	EA-3		
viba_49919	PL/JN/028/NIG/2020	cattle	100.0	0	O	EA-3		
viba_49915	PL/JN/027/NIG/2020	cattle	100.0	0	O	EA-3		
viba_49895	PL/JN/022/NIG/2020	cattle	100.0	0	O	EA-3		
viba_49907	PL/JN/025/NIG/2020	cattle	100.0	0	O	EA-3		
viba_49811	PL/BK/030/NIG/2020	cattle	100.0	0	O	EA-3		
viba_49815	PL/BK/033/NIG/2020	cattle	100.0	0	O	EA-3		
viba_49903	PL/JN/024/NIG/2020	cattle	100.0	0	O	EA-3		
viba_49923	PL/JN/029/NIG/2020	cattle	100.0	0	O	EA-3		

Most Closely Related Prototype Sequences

see <http://www.wrlfmd.org/fmdv-genome/fmd-prototype-strains>

sequence	virus name	Host	% Id.	# Ambig.	serotype	topotype	lineage	sublineage
viba_116	SUD/2/86	bovine	88.6	0	O	EA-3		
viba_854	ETH/1/2007	cattle	85.5	0	O	EA-3		
viba_50	UGA/17/98		85.3	0	O	EA-4		
viba_104	GHA/5/93	bovine	84.4	0	O	WA		
viba_408	ETH/3/2004	cattle	84.3	0	O	EA-3		
viba_285	UKG/35/2001	porcine	83.7	0	O	ME-SA	PanAsia	
viba_85	UGA/3/2002		83.7	0	O	EA-2		
viba_30238	MUR/19/2016	cattle	83.7	0	O	ME-SA	Ind-2001	e
viba_523	K83/79		83.6	0	O	EA-1		
viba_68	TAI/189/87	bovine	83.6	0	O	SEA		

Virus sample name:	PL/JN/024/NIG/2020
Sender reference:	PL/JN/024
Location of origin:	Jos North, Plateau State
Country of origin:	Nigeria
Date of collection:	25/09/2020
Host species:	cattle
Serotype:	O
Topotype:	EA-3
Lineage:	
Sublineage:	
Sequence length:	633
Ambiguities:	0
Material submitted for sequencing:	n/a
Harvest date of material:	n/a
Primers:	n/a
Received for sequencing:	n/a
Created:	22/12/2021
Last updated:	22/12/2021
VIBASys IDs: sample 49901, genome 49902, sequence viba_49903, sequencing info 49904	

Most Closely Related Sequences

sequence	virus name	Host	% Id.	# Ambig.	serotype	topotype	lineage	sublineage
viba_49891	PL/JN/021/NIG/2020	cattle	100.0	0	O	EA-3		
viba_49911	PL/JN/026/NIG/2020	cattle	100.0	0	O	EA-3		
viba_49919	PL/JN/028/NIG/2020	cattle	100.0	0	O	EA-3		
viba_49915	PL/JN/027/NIG/2020	cattle	100.0	0	O	EA-3		
viba_49895	PL/JN/022/NIG/2020	cattle	100.0	0	O	EA-3		
viba_49907	PL/JN/025/NIG/2020	cattle	100.0	0	O	EA-3		
viba_49811	PL/BK/030/NIG/2020	cattle	100.0	0	O	EA-3		
viba_49815	PL/BK/033/NIG/2020	cattle	100.0	0	O	EA-3		
viba_49899	PL/JN/023/NIG/2020	cattle	100.0	0	O	EA-3		
viba_49923	PL/JN/029/NIG/2020	cattle	100.0	0	O	EA-3		

Most Closely Related Prototype Sequences

see <http://www.wrlfmd.org/fmdv-genome/fmd-prototype-strains>

sequence	virus name	Host	% Id.	# Ambig.	serotype	topotype	lineage	sublineage
viba_116	SUD/2/86	bovine	88.6	0	O	EA-3		
viba_854	ETH/1/2007	cattle	85.5	0	O	EA-3		
viba_50	UGA/17/98		85.3	0	O	EA-4		
viba_104	GHA/5/93	bovine	84.4	0	O	WA		
viba_408	ETH/3/2004	cattle	84.3	0	O	EA-3		
viba_285	UKG/35/2001	porcine	83.7	0	O	ME-SA	PanAsia	
viba_85	UGA/3/2002		83.7	0	O	EA-2		
viba_30238	MUR/19/2016	cattle	83.7	0	O	ME-SA	Ind-2001	e
viba_523	K83/79		83.6	0	O	EA-1		
viba_68	TAI/189/87	bovine	83.6	0	O	SEA		

Virus sample name:	PL/JN/025/NIG/2020
Sender reference:	PL/JN/025
Location of origin:	Jos North, Plateau State
Country of origin:	Nigeria
Date of collection:	25/09/2020
Host species:	cattle
Serotype:	O
Topotype:	EA-3
Lineage:	
Sublineage:	
Sequence length:	633
Ambiguities:	0
Material submitted for sequencing:	n/a
Harvest date of material:	n/a
Primers:	n/a
Received for sequencing:	n/a
Created:	22/12/2021
Last updated:	22/12/2021
VIBASys IDs: sample 49905, genome 49906, sequence viba_49907, sequencing info 49908	

Most Closely Related Sequences

sequence	virus name	Host	% Id.	# Ambig.	serotype	topotype	lineage	sublineage
viba_49891	PL/JN/021/NIG/2020	cattle	100.0	0	O	EA-3		
viba_49911	PL/JN/026/NIG/2020	cattle	100.0	0	O	EA-3		
viba_49919	PL/JN/028/NIG/2020	cattle	100.0	0	O	EA-3		
viba_49915	PL/JN/027/NIG/2020	cattle	100.0	0	O	EA-3		
viba_49895	PL/JN/022/NIG/2020	cattle	100.0	0	O	EA-3		
viba_49811	PL/BK/030/NIG/2020	cattle	100.0	0	O	EA-3		
viba_49815	PL/BK/033/NIG/2020	cattle	100.0	0	O	EA-3		
viba_49899	PL/JN/023/NIG/2020	cattle	100.0	0	O	EA-3		
viba_49903	PL/JN/024/NIG/2020	cattle	100.0	0	O	EA-3		
viba_49923	PL/JN/029/NIG/2020	cattle	100.0	0	O	EA-3		

Most Closely Related Prototype Sequences

see <http://www.wrlfmd.org/fmdv-genome/fmd-prototype-strains>

sequence	virus name	Host	% Id.	# Ambig.	serotype	topotype	lineage	sublineage
viba_116	SUD/2/86	bovine	88.6	0	O	EA-3		
viba_854	ETH/1/2007	cattle	85.5	0	O	EA-3		
viba_50	UGA/17/98		85.3	0	O	EA-4		
viba_104	GHA/5/93	bovine	84.4	0	O	WA		
viba_408	ETH/3/2004	cattle	84.3	0	O	EA-3		
viba_285	UKG/35/2001	porcine	83.7	0	O	ME-SA	PanAsia	
viba_85	UGA/3/2002		83.7	0	O	EA-2		
viba_30238	MUR/19/2016	cattle	83.7	0	O	ME-SA	Ind-2001	e
viba_523	K83/79		83.6	0	O	EA-1		
viba_68	TAI/189/87	bovine	83.6	0	O	SEA		

Virus sample name:	PL/JN/026/NIG/2020
Sender reference:	PL/JN/026
Location of origin:	Jos North, Plateau State
Country of origin:	Nigeria
Date of collection:	25/09/2020
Host species:	cattle
Serotype:	O
Topotype:	EA-3
Lineage:	
Sublineage:	
Sequence length:	633
Ambiguities:	0
Material submitted for sequencing:	n/a
Harvest date of material:	n/a
Primers:	n/a
Received for sequencing:	n/a
Created:	22/12/2021
Last updated:	22/12/2021
VIBASys IDs: sample 49909, genome 49910, sequence viba_49911, sequencing info 49912	

Most Closely Related Sequences

sequence	virus name	Host	% Id.	# Ambig.	serotype	topotype	lineage	sublineage
viba_49891	PL/JN/021/NIG/2020	cattle	100.0	0	O	EA-3		
viba_49919	PL/JN/028/NIG/2020	cattle	100.0	0	O	EA-3		
viba_49915	PL/JN/027/NIG/2020	cattle	100.0	0	O	EA-3		
viba_49895	PL/JN/022/NIG/2020	cattle	100.0	0	O	EA-3		
viba_49907	PL/JN/025/NIG/2020	cattle	100.0	0	O	EA-3		
viba_49811	PL/BK/030/NIG/2020	cattle	100.0	0	O	EA-3		
viba_49815	PL/BK/033/NIG/2020	cattle	100.0	0	O	EA-3		
viba_49899	PL/JN/023/NIG/2020	cattle	100.0	0	O	EA-3		
viba_49903	PL/JN/024/NIG/2020	cattle	100.0	0	O	EA-3		
viba_49923	PL/JN/029/NIG/2020	cattle	100.0	0	O	EA-3		

Most Closely Related Prototype Sequences

see <http://www.wrlfmd.org/fmdv-genome/fmd-prototype-strains>

sequence	virus name	Host	% Id.	# Ambig.	serotype	topotype	lineage	sublineage
viba_116	SUD/2/86	bovine	88.6	0	O	EA-3		
viba_854	ETH/1/2007	cattle	85.5	0	O	EA-3		
viba_50	UGA/17/98		85.3	0	O	EA-4		
viba_104	GHA/5/93	bovine	84.4	0	O	WA		
viba_408	ETH/3/2004	cattle	84.3	0	O	EA-3		
viba_285	UKG/35/2001	porcine	83.7	0	O	ME-SA	PanAsia	
viba_85	UGA/3/2002		83.7	0	O	EA-2		
viba_30238	MUR/19/2016	cattle	83.7	0	O	ME-SA	Ind-2001	e
viba_523	K83/79		83.6	0	O	EA-1		
viba_68	TAI/189/87	bovine	83.6	0	O	SEA		

Virus sample name:	PL/JN/027/NIG/2020
Sender reference:	PL/JN/027
Location of origin:	Jos North, Plateau State
Country of origin:	Nigeria
Date of collection:	25/09/2020
Host species:	cattle
Serotype:	O
Topotype:	EA-3
Lineage:	
Sublineage:	
Sequence length:	633
Ambiguities:	0
Material submitted for sequencing:	n/a
Harvest date of material:	n/a
Primers:	n/a
Received for sequencing:	n/a
Created:	22/12/2021
Last updated:	22/12/2021
VIBASys IDs: sample 49913, genome 49914, sequence viba_49915, sequencing info 49916	

Most Closely Related Sequences

sequence	virus name	Host	% Id.	# Ambig.	serotype	topotype	lineage	sublineage
viba_49891	PL/JN/021/NIG/2020	cattle	100.0	0	O	EA-3		
viba_49911	PL/JN/026/NIG/2020	cattle	100.0	0	O	EA-3		
viba_49919	PL/JN/028/NIG/2020	cattle	100.0	0	O	EA-3		
viba_49895	PL/JN/022/NIG/2020	cattle	100.0	0	O	EA-3		
viba_49907	PL/JN/025/NIG/2020	cattle	100.0	0	O	EA-3		
viba_49811	PL/BK/030/NIG/2020	cattle	100.0	0	O	EA-3		
viba_49815	PL/BK/033/NIG/2020	cattle	100.0	0	O	EA-3		
viba_49899	PL/JN/023/NIG/2020	cattle	100.0	0	O	EA-3		
viba_49903	PL/JN/024/NIG/2020	cattle	100.0	0	O	EA-3		
viba_49923	PL/JN/029/NIG/2020	cattle	100.0	0	O	EA-3		

Most Closely Related Prototype Sequences

see <http://www.wrlfmd.org/fmdv-genome/fmd-prototype-strains>

sequence	virus name	Host	% Id.	# Ambig.	serotype	topotype	lineage	sublineage
viba_116	SUD/2/86	bovine	88.6	0	O	EA-3		
viba_854	ETH/1/2007	cattle	85.5	0	O	EA-3		
viba_50	UGA/17/98		85.3	0	O	EA-4		
viba_104	GHA/5/93	bovine	84.4	0	O	WA		
viba_408	ETH/3/2004	cattle	84.3	0	O	EA-3		
viba_285	UKG/35/2001	porcine	83.7	0	O	ME-SA	PanAsia	
viba_85	UGA/3/2002		83.7	0	O	EA-2		
viba_30238	MUR/19/2016	cattle	83.7	0	O	ME-SA	Ind-2001	e
viba_523	K83/79		83.6	0	O	EA-1		
viba_68	TAI/189/87	bovine	83.6	0	O	SEA		

Virus sample name:	PL/JN/028/NIG/2020
Sender reference:	PL/JN/028
Location of origin:	Jos North, Plateau State
Country of origin:	Nigeria
Date of collection:	25/09/2020
Host species:	cattle
Serotype:	O
Topotype:	EA-3
Lineage:	
Sublineage:	
Sequence length:	633
Ambiguities:	0
Material submitted for sequencing:	n/a
Harvest date of material:	n/a
Primers:	n/a
Received for sequencing:	n/a
Created:	22/12/2021
Last updated:	22/12/2021
VIBASys IDs: sample 49917, genome 49918, sequence viba_49919, sequencing info 49920	

Most Closely Related Sequences

sequence	virus name	Host	% Id.	# Ambig.	serotype	topotype	lineage	sublineage
viba_49891	PL/JN/021/NIG/2020	cattle	100.0	0	O	EA-3		
viba_49911	PL/JN/026/NIG/2020	cattle	100.0	0	O	EA-3		
viba_49915	PL/JN/027/NIG/2020	cattle	100.0	0	O	EA-3		
viba_49895	PL/JN/022/NIG/2020	cattle	100.0	0	O	EA-3		
viba_49907	PL/JN/025/NIG/2020	cattle	100.0	0	O	EA-3		
viba_49811	PL/BK/030/NIG/2020	cattle	100.0	0	O	EA-3		
viba_49815	PL/BK/033/NIG/2020	cattle	100.0	0	O	EA-3		
viba_49899	PL/JN/023/NIG/2020	cattle	100.0	0	O	EA-3		
viba_49903	PL/JN/024/NIG/2020	cattle	100.0	0	O	EA-3		
viba_49923	PL/JN/029/NIG/2020	cattle	100.0	0	O	EA-3		

Most Closely Related Prototype Sequences

see <http://www.wrlfmd.org/fmdv-genome/fmd-prototype-strains>

sequence	virus name	Host	% Id.	# Ambig.	serotype	topotype	lineage	sublineage
viba_116	SUD/2/86	bovine	88.6	0	O	EA-3		
viba_854	ETH/1/2007	cattle	85.5	0	O	EA-3		
viba_50	UGA/17/98		85.3	0	O	EA-4		
viba_104	GHA/5/93	bovine	84.4	0	O	WA		
viba_408	ETH/3/2004	cattle	84.3	0	O	EA-3		
viba_285	UKG/35/2001	porcine	83.7	0	O	ME-SA	PanAsia	
viba_85	UGA/3/2002		83.7	0	O	EA-2		
viba_30238	MUR/19/2016	cattle	83.7	0	O	ME-SA	Ind-2001	e
viba_523	K83/79		83.6	0	O	EA-1		
viba_68	TAI/189/87	bovine	83.6	0	O	SEA		

Virus sample name:	PL/JN/029/NIG/2020
Sender reference:	PL/JN/029
Location of origin:	Jos North, Plateau State
Country of origin:	Nigeria
Date of collection:	25/09/2020
Host species:	cattle
Serotype:	O
Topotype:	EA-3
Lineage:	
Sublineage:	
Sequence length:	633
Ambiguities:	0
Material submitted for sequencing:	n/a
Harvest date of material:	n/a
Primers:	n/a
Received for sequencing:	n/a
Created:	22/12/2021
Last updated:	22/12/2021
VIBASys IDs: sample 49921, genome 49922, sequence viba_49923, sequencing info 49924	

Most Closely Related Sequences

sequence	virus name	Host	% Id.	# Ambig.	serotype	topotype	lineage	sublineage
viba_49891	PL/JN/021/NIG/2020	cattle	100.0	0	O	EA-3		
viba_49911	PL/JN/026/NIG/2020	cattle	100.0	0	O	EA-3		
viba_49919	PL/JN/028/NIG/2020	cattle	100.0	0	O	EA-3		
viba_49915	PL/JN/027/NIG/2020	cattle	100.0	0	O	EA-3		
viba_49895	PL/JN/022/NIG/2020	cattle	100.0	0	O	EA-3		
viba_49907	PL/JN/025/NIG/2020	cattle	100.0	0	O	EA-3		
viba_49811	PL/BK/030/NIG/2020	cattle	100.0	0	O	EA-3		
viba_49815	PL/BK/033/NIG/2020	cattle	100.0	0	O	EA-3		
viba_49899	PL/JN/023/NIG/2020	cattle	100.0	0	O	EA-3		
viba_49903	PL/JN/024/NIG/2020	cattle	100.0	0	O	EA-3		

Most Closely Related Prototype Sequences

see <http://www.wrlfmd.org/fmdv-genome/fmd-prototype-strains>

sequence	virus name	Host	% Id.	# Ambig.	serotype	topotype	lineage	sublineage
viba_116	SUD/2/86	bovine	88.6	0	O	EA-3		
viba_854	ETH/1/2007	cattle	85.5	0	O	EA-3		
viba_50	UGA/17/98		85.3	0	O	EA-4		
viba_104	GHA/5/93	bovine	84.4	0	O	WA		
viba_408	ETH/3/2004	cattle	84.3	0	O	EA-3		
viba_285	UKG/35/2001	porcine	83.7	0	O	ME-SA	PanAsia	
viba_85	UGA/3/2002		83.7	0	O	EA-2		
viba_30238	MUR/19/2016	cattle	83.7	0	O	ME-SA	Ind-2001	e
viba_523	K83/79		83.6	0	O	EA-1		
viba_68	TAI/189/87	bovine	83.6	0	O	SEA		

Virus sample name:	KD/ZA/01/NIG/2020
Sender reference:	KD/ZA/01
Location of origin:	Zaria, Kaduna State
Country of origin:	Nigeria
Date of collection:	09/10/2020
Host species:	cattle
Serotype:	O
Topotype:	EA-3
Lineage:	
Sublineage:	
Sequence length:	633
Ambiguities:	0
Material submitted for sequencing:	n/a
Harvest date of material:	n/a
Primers:	n/a
Received for sequencing:	n/a
Created:	22/12/2021
Last updated:	22/12/2021
VIBASys IDs: sample 49925, genome 49926, sequence viba_49927, sequencing info 49928	

Most Closely Related Sequences

sequence	virus name	Host	% Id.	# Ambig.	serotype	topotype	lineage	sublineage
viba_49931	KD/ZA/02/NIG/2020	cattle	99.8	0	O	EA-3		
viba_49935	KD/ZA/04/NIG/2020	cattle	99.8	0	O	EA-3		
viba_49939	KD/ZA/05 /NIG/2020	cattle	99.8	0	O	EA-3		
viba_49787	PL/KAN/05/NIG/2020	cattle	99.7	0	O	EA-3		
viba_49843	KN/BMF/01/NIG/2020	cattle	99.7	0	O	EA-3		
viba_49807	PL/JE/019/NIG/2020	cattle	99.7	0	O	EA-3		
viba_49887	PL/JN/020/NIG/2020	cattle	99.7	0	O	EA-3		
viba_49771	PL/KAN/01/NIG/2020	cattle	99.7	0	O	EA-3		
viba_49767	PL/KA/02/NIG/2020	cattle	99.7	0	O	EA-3		
viba_49803	PL/JE/017/NIG/2020	cattle	99.7	0	O	EA-3		

Most Closely Related Prototype Sequences

see <http://www.wrlfmd.org/fmdv-genome/fmd-prototype-strains>

sequence	virus name	Host	% Id.	# Ambig.	serotype	topotype	lineage	sublineage
viba_116	SUD/2/86	bovine	88.5	0	O	EA-3		
viba_854	ETH/1/2007	cattle	85.6	0	O	EA-3		
viba_50	UGA/17/98		85.5	0	O	EA-4		
viba_408	ETH/3/2004	cattle	84.5	0	O	EA-3		
viba_104	GHA/5/93	bovine	84.4	0	O	WA		
viba_68	TAI/189/87	bovine	83.9	0	O	SEA		
viba_30238	MUR/19/2016	cattle	83.7	0	O	ME-SA	Ind-2001	e
viba_523	K83/79		83.4	0	O	EA-1		
viba_285	UKG/35/2001	porcine	83.4	0	O	ME-SA	PanAsia	
viba_85	UGA/3/2002		83.3	0	O	EA-2		

Virus sample name:	KD/ZA/02/NIG/2020
Sender reference:	KD/ZA/02
Location of origin:	Zaria, Kaduna State
Country of origin:	Nigeria
Date of collection:	09/10/2020
Host species:	cattle
Serotype:	O
Topotype:	EA-3
Lineage:	
Sublineage:	
Sequence length:	633
Ambiguities:	0
Material submitted for sequencing:	n/a
Harvest date of material:	n/a
Primers:	n/a
Received for sequencing:	n/a
Created:	22/12/2021
Last updated:	22/12/2021
VIBASys IDs: sample 49929, genome 49930, sequence viba_49931, sequencing info 49932	

Most Closely Related Sequences

sequence	virus name	Host	% Id.	# Ambig.	serotype	topotype	lineage	sublineage
viba_49935	KD/ZA/04/NIG/2020	cattle	100.0	0	O	EA-3		
viba_49939	KD/ZA/05 /NIG/2020	cattle	100.0	0	O	EA-3		
viba_49927	KD/ZA/01/NIG/2020	cattle	99.8	0	O	EA-3		
viba_49787	PL/KAN/05/NIG/2020	cattle	99.5	0	O	EA-3		
viba_49843	KN/BMF/01/NIG/2020	cattle	99.5	0	O	EA-3		
viba_49807	PL/JE/019/NIG/2020	cattle	99.5	0	O	EA-3		
viba_49887	PL/JN/020/NIG/2020	cattle	99.5	0	O	EA-3		
viba_49771	PL/KAN/01/NIG/2020	cattle	99.5	0	O	EA-3		
viba_49767	PL/KA/02/NIG/2020	cattle	99.5	0	O	EA-3		
viba_49803	PL/JE/017/NIG/2020	cattle	99.5	0	O	EA-3		

Most Closely Related Prototype Sequences

see <http://www.wrlfmd.org/fmdv-genome/fmd-prototype-strains>

sequence	virus name	Host	% Id.	# Ambig.	serotype	topotype	lineage	sublineage
viba_116	SUD/2/86	bovine	88.3	0	O	EA-3		
viba_854	ETH/1/2007	cattle	85.5	0	O	EA-3		
viba_50	UGA/17/98		85.3	0	O	EA-4		
viba_408	ETH/3/2004	cattle	84.3	0	O	EA-3		
viba_104	GHA/5/93	bovine	84.2	0	O	WA		
viba_68	TAI/189/87	bovine	83.8	0	O	SEA		
viba_30238	MUR/19/2016	cattle	83.5	0	O	ME-SA	Ind-2001	e
viba_85	UGA/3/2002		83.4	0	O	EA-2		
viba_523	K83/79		83.3	0	O	EA-1		
viba_285	UKG/35/2001	porcine	83.3	0	O	ME-SA	PanAsia	

Virus sample name:	KD/ZA/04/NIG/2020
Sender reference:	KD/ZA/04
Location of origin:	Zaria, Kaduna State
Country of origin:	Nigeria
Date of collection:	09/10/2020
Host species:	cattle
Serotype:	O
Topotype:	EA-3
Lineage:	
Sublineage:	
Sequence length:	633
Ambiguities:	0
Material submitted for sequencing:	n/a
Harvest date of material:	n/a
Primers:	n/a
Received for sequencing:	n/a
Created:	22/12/2021
Last updated:	22/12/2021
VIBASys IDs: sample 49933, genome 49934, sequence viba_49935, sequencing info 49936	

Most Closely Related Sequences

sequence	virus name	Host	% Id.	# Ambig.	serotype	topotype	lineage	sublineage
viba_49931	KD/ZA/02/NIG/2020	cattle	100.0	0	O	EA-3		
viba_49939	KD/ZA/05 /NIG/2020	cattle	100.0	0	O	EA-3		
viba_49927	KD/ZA/01/NIG/2020	cattle	99.8	0	O	EA-3		
viba_49787	PL/KAN/05/NIG/2020	cattle	99.5	0	O	EA-3		
viba_49843	KN/BMF/01/NIG/2020	cattle	99.5	0	O	EA-3		
viba_49807	PL/JE/019/NIG/2020	cattle	99.5	0	O	EA-3		
viba_49887	PL/JN/020/NIG/2020	cattle	99.5	0	O	EA-3		
viba_49771	PL/KAN/01/NIG/2020	cattle	99.5	0	O	EA-3		
viba_49767	PL/KA/02/NIG/2020	cattle	99.5	0	O	EA-3		
viba_49803	PL/JE/017/NIG/2020	cattle	99.5	0	O	EA-3		

Most Closely Related Prototype Sequences

see <http://www.wrlfmd.org/fmdv-genome/fmd-prototype-strains>

sequence	virus name	Host	% Id.	# Ambig.	serotype	topotype	lineage	sublineage
viba_116	SUD/2/86	bovine	88.3	0	O	EA-3		
viba_854	ETH/1/2007	cattle	85.5	0	O	EA-3		
viba_50	UGA/17/98		85.3	0	O	EA-4		
viba_408	ETH/3/2004	cattle	84.3	0	O	EA-3		
viba_104	GHA/5/93	bovine	84.2	0	O	WA		
viba_68	TAI/189/87	bovine	83.8	0	O	SEA		
viba_30238	MUR/19/2016	cattle	83.5	0	O	ME-SA	Ind-2001	e
viba_85	UGA/3/2002		83.4	0	O	EA-2		
viba_523	K83/79		83.3	0	O	EA-1		
viba_285	UKG/35/2001	porcine	83.3	0	O	ME-SA	PanAsia	

Virus sample name:	KD/ZA/05 /NIG/2020
Sender reference:	KD/ZA/05
Location of origin:	Zaria, Kaduna State
Country of origin:	Nigeria
Date of collection:	09/10/2020
Host species:	cattle
Serotype:	O
Topotype:	EA-3
Lineage:	
Sublineage:	
Sequence length:	633
Ambiguities:	0
Material submitted for sequencing:	n/a
Harvest date of material:	n/a
Primers:	n/a
Received for sequencing:	n/a
Created:	22/12/2021
Last updated:	22/12/2021
VIBASys IDs: sample 49937, genome 49938, sequence viba_49939, sequencing info 49940	

Most Closely Related Sequences

sequence	virus name	Host	% Id.	# Ambig.	serotype	topotype	lineage	sublineage
viba_49931	KD/ZA/02/NIG/2020	cattle	100.0	0	O	EA-3		
viba_49935	KD/ZA/04/NIG/2020	cattle	100.0	0	O	EA-3		
viba_49927	KD/ZA/01/NIG/2020	cattle	99.8	0	O	EA-3		
viba_49787	PL/KAN/05/NIG/2020	cattle	99.5	0	O	EA-3		
viba_49843	KN/BMF/01/NIG/2020	cattle	99.5	0	O	EA-3		
viba_49807	PL/JE/019/NIG/2020	cattle	99.5	0	O	EA-3		
viba_49887	PL/JN/020/NIG/2020	cattle	99.5	0	O	EA-3		
viba_49771	PL/KAN/01/NIG/2020	cattle	99.5	0	O	EA-3		
viba_49767	PL/KA/02/NIG/2020	cattle	99.5	0	O	EA-3		
viba_49803	PL/JE/017/NIG/2020	cattle	99.5	0	O	EA-3		

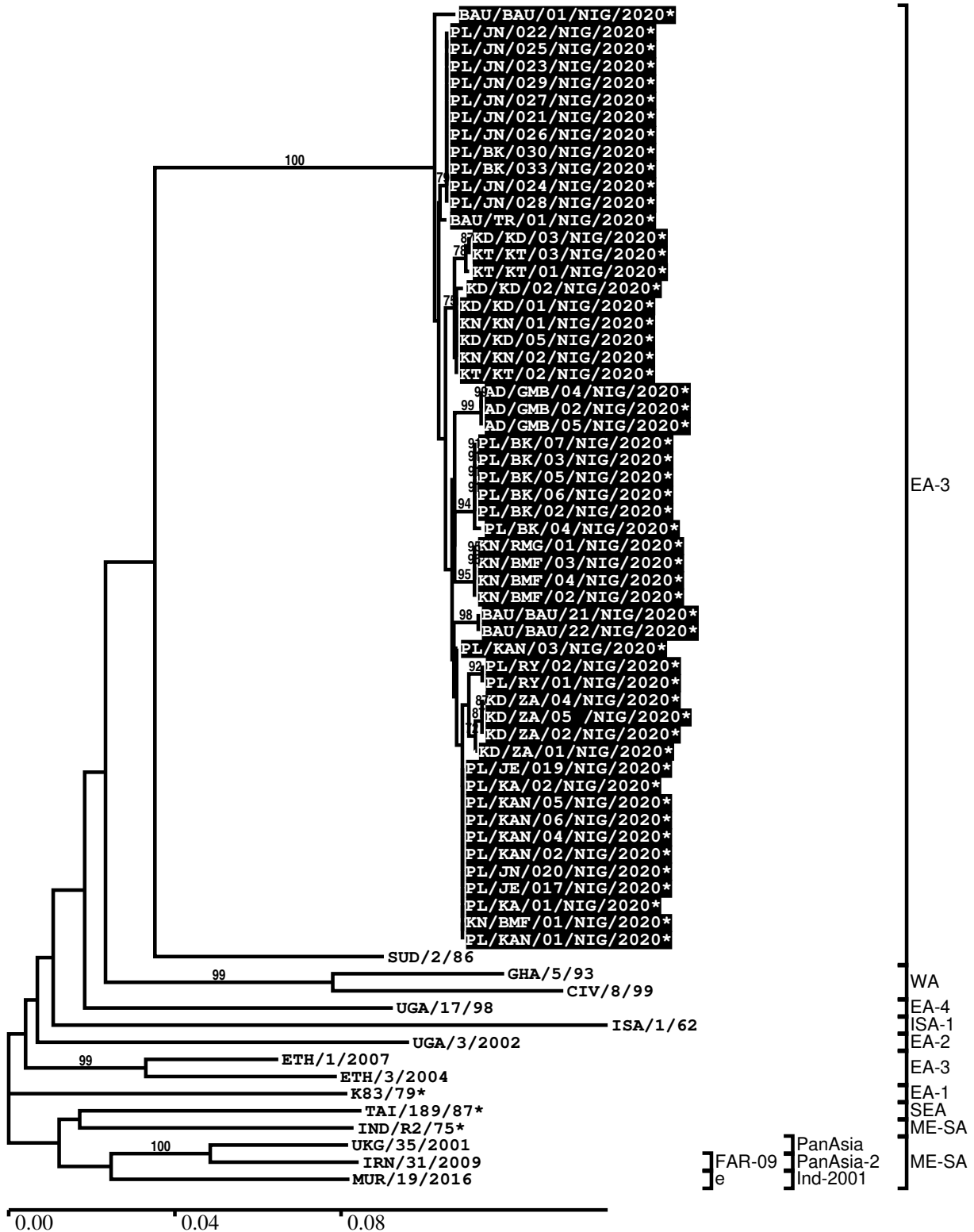
Most Closely Related Prototype Sequences

see <http://www.wrlfmd.org/fmdv-genome/fmd-prototype-strains>

sequence	virus name	Host	% Id.	# Ambig.	serotype	topotype	lineage	sublineage
viba_116	SUD/2/86	bovine	88.3	0	O	EA-3		
viba_854	ETH/1/2007	cattle	85.5	0	O	EA-3		
viba_50	UGA/17/98		85.3	0	O	EA-4		
viba_408	ETH/3/2004	cattle	84.3	0	O	EA-3		
viba_104	GHA/5/93	bovine	84.2	0	O	WA		
viba_68	TAI/189/87	bovine	83.8	0	O	SEA		
viba_30238	MUR/19/2016	cattle	83.5	0	O	ME-SA	Ind-2001	e
viba_85	UGA/3/2002		83.4	0	O	EA-2		
viba_523	K83/79		83.3	0	O	EA-1		
viba_285	UKG/35/2001	porcine	83.3	0	O	ME-SA	PanAsia	

Report on FMDV O in Nigeria in 2020

Batch: WRLMEG/2021/00019



*, not a WRLFMD Reference Number

Analysis Parameters

VP1 subsequence extractor:	vp1_O
Query sequence set:	WRLMEG/2021/00019-Nigeria-O (55 sequences)
Sequence database set:	allseqs_O (5474 sequences)
Prototype sequence set:	!prototypes_O (49 sequences)
Number of related sequences reported:	10
Minimal VP1 subsequence match length	600
Sequence alignment method:	muscle (default parameters)
Sequence alignment length:	636
Phylogeny reconstruction method:	fdnadist, fneighbor
Number of bootstrap samples:	1000
Random seed for bootstrapping:	1
Displaying bootstrap values above:	70.0%
Number of sequences in tree capped at:	100
Number of prototype sequences in tree:	13
VIBASys version:	reflabs-1.1.2

Sequences in the Phylogenetic Tree

All sequences in the tree are in taxonomic group FMDV/O

label	accession	host(s)	lab	country	taxonomic information
BAU/BAU/01/NIG/2020*	n/a	cattle	NCFAD/NVRI	Nigeria	EA-3
PL/JN/022/NIG/2020*	n/a	cattle	NCFAD/NVRI	Nigeria	EA-3
PL/JN/025/NIG/2020*	n/a	cattle	NCFAD/NVRI	Nigeria	EA-3
PL/JN/023/NIG/2020*	n/a	cattle	NCFAD/NVRI	Nigeria	EA-3
PL/JN/029/NIG/2020*	n/a	cattle	NCFAD/NVRI	Nigeria	EA-3
PL/JN/027/NIG/2020*	n/a	cattle	NCFAD/NVRI	Nigeria	EA-3
PL/JN/021/NIG/2020*	n/a	cattle	NCFAD/NVRI	Nigeria	EA-3
PL/JN/026/NIG/2020*	n/a	cattle	NCFAD/NVRI	Nigeria	EA-3
PL/BK/030/NIG/2020*	n/a	cattle	NCFAD/NVRI	Nigeria	EA-3
PL/BK/033/NIG/2020*	n/a	cattle	NCFAD/NVRI	Nigeria	EA-3
PL/JN/024/NIG/2020*	n/a	cattle	NCFAD/NVRI	Nigeria	EA-3
PL/JN/028/NIG/2020*	n/a	cattle	NCFAD/NVRI	Nigeria	EA-3
BAU/TR/01/NIG/2020*	n/a	cattle	NCFAD/NVRI	Nigeria	EA-3
KD/KD/03/NIG/2020*	n/a	cattle	NCFAD/NVRI	Nigeria	EA-3
KT/KT/03/NIG/2020*	n/a	cattle	NCFAD/NVRI	Nigeria	EA-3
KT/KT/01/NIG/2020*	n/a	cattle	NCFAD/NVRI	Nigeria	EA-3
KD/KD/02/NIG/2020*	n/a	cattle	NCFAD/NVRI	Nigeria	EA-3
KD/KD/01/NIG/2020*	n/a	cattle	NCFAD/NVRI	Nigeria	EA-3
KN/KN/01/NIG/2020*	n/a	cattle	NCFAD/NVRI	Nigeria	EA-3
KD/KD/05/NIG/2020*	n/a	cattle	NCFAD/NVRI	Nigeria	EA-3
KN/KN/02/NIG/2020*	n/a	cattle	NCFAD/NVRI	Nigeria	EA-3
KT/KT/02/NIG/2020*	n/a	cattle	NCFAD/NVRI	Nigeria	EA-3
AD/GMB/04/NIG/2020*	n/a	cattle	NCFAD/NVRI	Nigeria	EA-3
AD/GMB/02/NIG/2020*	n/a	cattle	NCFAD/NVRI	Nigeria	EA-3
AD/GMB/05/NIG/2020*	n/a	cattle	NCFAD/NVRI	Nigeria	EA-3
PL/BK/07/NIG/2020*	n/a	cattle	NCFAD/NVRI	Nigeria	EA-3
PL/BK/03/NIG/2020*	n/a	cattle	NCFAD/NVRI	Nigeria	EA-3
PL/BK/05/NIG/2020*	n/a	cattle	NCFAD/NVRI	Nigeria	EA-3
PL/BK/06/NIG/2020*	n/a	cattle	NCFAD/NVRI	Nigeria	EA-3
PL/BK/02/NIG/2020*	n/a	cattle	NCFAD/NVRI	Nigeria	EA-3
PL/BK/04/NIG/2020*	n/a	cattle	NCFAD/NVRI	Nigeria	EA-3
KN/RMG/01/NIG/2020*	n/a	cattle	NCFAD/NVRI	Nigeria	EA-3
KN/BMF/03/NIG/2020*	n/a	cattle	NCFAD/NVRI	Nigeria	EA-3
KN/BMF/04/NIG/2020*	n/a	cattle	NCFAD/NVRI	Nigeria	EA-3
KN/BMF/02/NIG/2020*	n/a	cattle	NCFAD/NVRI	Nigeria	EA-3
BAU/BAU/21/NIG/2020*	n/a	cattle	NCFAD/NVRI	Nigeria	EA-3

continued on next page

label	accession	host(s)	lab	country	taxonomic information
BAU/BAU/22/NIG/2020*	n/a	cattle	NCFAD/NVRI	Nigeria	EA-3
PL/KAN/03/NIG/2020*	n/a	cattle	NCFAD/NVRI	Nigeria	EA-3
PL/RV/02/NIG/2020*	n/a	cattle	NCFAD/NVRI	Nigeria	EA-3
PL/RV/01/NIG/2020*	n/a	cattle	NCFAD/NVRI	Nigeria	EA-3
KD/ZA/04/NIG/2020*	n/a	cattle	NCFAD/NVRI	Nigeria	EA-3
KD/ZA/05 /NIG/2020*	n/a	cattle	NCFAD/NVRI	Nigeria	EA-3
KD/ZA/02/NIG/2020*	n/a	cattle	NCFAD/NVRI	Nigeria	EA-3
KD/ZA/01/NIG/2020*	n/a	cattle	NCFAD/NVRI	Nigeria	EA-3
PL/JE/019/NIG/2020*	n/a	cattle	NCFAD/NVRI	Nigeria	EA-3
PL/KA/02/NIG/2020*	n/a	cattle	NCFAD/NVRI	Nigeria	EA-3
PL/KAN/05/NIG/2020*	n/a	cattle	NCFAD/NVRI	Nigeria	EA-3
PL/KAN/06/NIG/2020*	n/a	cattle	NCFAD/NVRI	Nigeria	EA-3
PL/KAN/04/NIG/2020*	n/a	cattle	NCFAD/NVRI	Nigeria	EA-3
PL/KAN/02/NIG/2020*	n/a	cattle	NCFAD/NVRI	Nigeria	EA-3
PL/JN/020/NIG/2020*	n/a	cattle	NCFAD/NVRI	Nigeria	EA-3
PL/JE/017/NIG/2020*	n/a	cattle	NCFAD/NVRI	Nigeria	EA-3
PL/KA/01/NIG/2020*	n/a	cattle	NCFAD/NVRI	Nigeria	EA-3
KN/BMF/01/NIG/2020*	n/a	cattle	NCFAD/NVRI	Nigeria	EA-3
PL/KAN/01/NIG/2020*	n/a	cattle	NCFAD/NVRI	Nigeria	EA-3
SUD/2/86	DQ165075	bovine	WRLFMD	Sudan	EA-3
GHA/5/93	AJ303488	bovine	WRLFMD	Ghana	WA
CIV/8/99	AJ303485	bovine	WRLFMD	Cote d'Ivoire	WA
UGA/17/98	HM211075	n/a	WRLFMD	Uganda	EA-4
ISA/1/62	AJ303500	n/a	WRLFMD	Indonesia	ISA-1
UGA/3/2002	DQ165077	n/a	WRLFMD	Uganda	EA-2
ETH/1/2007	FJ798137	cattle	WRLFMD	Ethiopia	EA-3
ETH/3/2004	FJ798109	cattle	WRLFMD	Ethiopia	EA-3
K83/79*	AJ303511	n/a	WRLFMD	Kenya	EA-1
TAI/189/87*	KY091288	bovine	TRRL	Thailand	SEA
IND/R2/75*	AF204276	n/a	PD-FMD	India	ME-SA
UKG/35/2001	AJ539141	porcine	PIADC	United Kingdom	ME-SA/PanAsia
IRN/31/2009	KY091284	cattle	WRLFMD	Iran	ME-SA/PanAsia-2/FAR-09
MUR/19/2016	MG972510	cattle	WRLFMD	Mauritius	ME-SA/Ind-2001/e

*, not a WRLFMD Reference Number

n/a, not available