

FAO World Reference Laboratory for Foot-and-Mouth Disease (WRLFMD)

Genotyping Report

FMDV serotype: O
Country: Indonesia
Year: 2022
Batch: WRLMEG/2022/00025
No. of sequences: 26
Report date: 1st August 2022
Report generated by: Nick Knowles
Report checked by: Don King

This report compares VP1 sequences submitted to GenBank (accession numbers: ON783873-ON783874 & ON854934-ON854957) by Molecular Diagnostics, Disease Investigation Center Wates - Yogyakarta, Jl. Yogya-Wates KM 27, Wates, Kulon Progo, Yogyakarta 55651, Indonesia.



Copyright © 2022 The Pirbright Institute, Ash Road, Pirbright, Woking GU24 0NF, United Kingdom.

www: <http://www.wrlfmd.org/>

email: reporting@pirbright.ac.uk

The contents of this report should not be reproduced without permission.

Virus sample name:	ISA/Tamiang/01220759-P4/2022
Sender reference:	ISA/Tamiang/01220759-P4/2022
Location of origin:	Aceh Tamiang regency, Aceh province, Sumatra
Country of origin:	Indonesia
Date of collection:	04/05/2022
Host species:	cattle
Serotype:	O
Topotype:	ME-SA
Lineage:	Ind-2001
Sublineage:	e
Sequence length:	633
Ambiguities:	0
Material submitted for sequencing:	n/a
Harvest date of material:	n/a
Primers:	n/a
Received for sequencing:	n/a
Created:	01/08/2022
Last updated:	01/08/2022
VIBASys IDs: sample 51189, genome 51190, sequence viba_51191, sequencing info 51192	

Most Closely Related Sequences

sequence	virus name	Host	% Id.	# Ambig.	serotype	topotype	lineage	sublineage
viba_50613	PVT-SP4/ISA/2022	cattle	100.0	0	O	ME-SA	Ind-2001	e
viba_51199	ISA/Langkat/A01220761/2022	cattle	99.7	0	O	ME-SA	Ind-2001	e
viba_51203	ISA/DeliSerdang/A01220762/2022	cattle	99.7	0	O	ME-SA	Ind-2001	e
viba_51291	ISA/HSU/A0522099-5/2022	goat	99.4	0	O	ME-SA	Ind-2001	e
viba_51287	ISA/Magetan/A04222620/2022	cattle	99.4	0	O	ME-SA	Ind-2001	e
viba_51223	ISA/Probolinggo/PVT/2022	cattle	99.4	0	O	ME-SA	Ind-2001	e
viba_51195	ISA/Tamiang/01220759-P10/2022	cattle	99.4	0	O	ME-SA	Ind-2001	e
viba_51020	ISA/3/2022	cattle	99.4	0	O	ME-SA	Ind-2001	e
viba_50625	PVT-S234/ISA/2022	cattle	99.4	0	O	ME-SA	Ind-2001	e
viba_51211	ISA/Sidoarjo/PVT/2022	cattle	99.4	0	O	ME-SA	Ind-2001	e

Most Closely Related Prototype Sequences

see <http://www.wrlfmd.org/fmdv-genome/fmd-prototype-strains>

sequence	virus name	Host	% Id.	# Ambig.	serotype	topotype	lineage	sublineage
viba_30238	MUR/19/2016	cattle	95.3	0	O	ME-SA	Ind-2001	e
viba_293	BHU/3/2009	cattle	92.1	0	O	ME-SA	Ind-2001	d
viba_541	OMN/7/2001	bovine	91.6	0	O	ME-SA	Ind-2001	b
viba_705	KUW/3/97	bovine	90.7	0	O	ME-SA	Ind-2001	a
viba_397	UAE/4/2008	gazelle	89.4	0	O	ME-SA	Ind-2001	c
viba_766	IRN/31/2009	cattle	88.5	0	O	ME-SA	PanAsia-2	FAR-09
viba_650	IRN/8/2005	ovine	88.5	0	O	ME-SA	PanAsia-2	
viba_719	IRN/88/2009		88.5	0	O	ME-SA	PanAsia-2	ANT-10
viba_491	TUR/257/2008		88.3	0	O	ME-SA	PanAsia-2	TER-08
viba_285	UKG/35/2001	porcine	88.2	0	O	ME-SA	PanAsia	

Virus sample name:	ISA/Tamiang/01220759-P10/2022
Sender reference:	ISA/Tamiang/01220759-P10/2022
Location of origin:	Aceh Tamiang regency, Aceh province, Sumatra
Country of origin:	Indonesia
Date of collection:	04/05/2022
Host species:	cattle
Serotype:	O
Topotype:	ME-SA
Lineage:	Ind-2001
Sublineage:	e
Sequence length:	633
Ambiguities:	0
Material submitted for sequencing:	n/a
Harvest date of material:	n/a
Primers:	n/a
Received for sequencing:	n/a
Created:	01/08/2022
Last updated:	01/08/2022
VIBASys IDs: sample 51193, genome 51194, sequence viba_51195, sequencing info 51196	

Most Closely Related Sequences

sequence	virus name	Host	% Id.	# Ambig.	serotype	topotype	lineage	sublineage
viba_50617	PVT-SP10/ISA/2022	cattle	100.0	0	O	ME-SA	Ind-2001	e
viba_51191	ISA/Tamiang/01220759-P4/2022	cattle	99.4	0	O	ME-SA	Ind-2001	e
viba_51199	ISA/Langkat/A01220761/2022	cattle	99.4	0	O	ME-SA	Ind-2001	e
viba_51203	ISA/DeliSerdang/A01220762/2022	cattle	99.4	0	O	ME-SA	Ind-2001	e
viba_50613	PVT-SP4/ISA/2022	cattle	99.4	0	O	ME-SA	Ind-2001	e
viba_51291	ISA/HSU/A0522099-5/2022	goat	99.1	0	O	ME-SA	Ind-2001	e
viba_51287	ISA/Magetan/A04222620/2022	cattle	99.1	0	O	ME-SA	Ind-2001	e
viba_51223	ISA/Probolinggo/PVT/2022	cattle	99.1	0	O	ME-SA	Ind-2001	e
viba_51020	ISA/3/2022	cattle	99.1	0	O	ME-SA	Ind-2001	e
viba_50625	PVT-S234/ISA/2022	cattle	99.1	0	O	ME-SA	Ind-2001	e

Most Closely Related Prototype Sequences

see <http://www.wrlfmd.org/fmdv-genome/fmd-prototype-strains>

sequence	virus name	Host	% Id.	# Ambig.	serotype	topotype	lineage	sublineage
viba_30238	MUR/19/2016	cattle	95.3	0	O	ME-SA	Ind-2001	e
viba_293	BHU/3/2009	cattle	92.1	0	O	ME-SA	Ind-2001	d
viba_541	OMN/7/2001	bovine	91.6	0	O	ME-SA	Ind-2001	b
viba_705	KUW/3/97	bovine	90.7	0	O	ME-SA	Ind-2001	a
viba_397	UAE/4/2008	gazelle	89.4	0	O	ME-SA	Ind-2001	c
viba_766	IRN/31/2009	cattle	88.5	0	O	ME-SA	PanAsia-2	FAR-09
viba_650	IRN/8/2005	ovine	88.5	0	O	ME-SA	PanAsia-2	
viba_719	IRN/88/2009		88.5	0	O	ME-SA	PanAsia-2	ANT-10
viba_491	TUR/257/2008		88.3	0	O	ME-SA	PanAsia-2	TER-08
viba_285	UKG/35/2001	porcine	88.2	0	O	ME-SA	PanAsia	

Virus sample name:	ISA/Langkat/A01220761/2022
Sender reference:	ISA/Langkat/A01220761/2022
Location of origin:	Langkat regency, North Sumatra province
Country of origin:	Indonesia
Date of collection:	08/05/2022
Host species:	cattle
Serotype:	O
Topotype:	ME-SA
Lineage:	Ind-2001
Sublineage:	e
Sequence length:	633
Ambiguities:	0
Material submitted for sequencing:	n/a
Harvest date of material:	n/a
Primers:	n/a
Received for sequencing:	n/a
Created:	01/08/2022
Last updated:	01/08/2022
VIBASys IDs: sample 51197, genome 51198, sequence viba_51199, sequencing info 51200	

Most Closely Related Sequences

sequence	virus name	Host	% Id.	# Ambig.	serotype	topotype	lineage	sublineage
viba_51203	ISA/DeliSerdang/A01220762/2022	cattle	100.0	0	O	ME-SA	Ind-2001	e
viba_51191	ISA/Tamiang/01220759-P4/2022	cattle	99.7	0	O	ME-SA	Ind-2001	e
viba_51291	ISA/HSU/A0522099-5/2022	goat	99.7	0	O	ME-SA	Ind-2001	e
viba_51287	ISA/Magetan/A04222620/2022	cattle	99.7	0	O	ME-SA	Ind-2001	e
viba_51223	ISA/Probolinggo/PVT/2022	cattle	99.7	0	O	ME-SA	Ind-2001	e
viba_51020	ISA/3/2022	cattle	99.7	0	O	ME-SA	Ind-2001	e
viba_50625	PVT-S234/ISA/2022	cattle	99.7	0	O	ME-SA	Ind-2001	e
viba_51211	ISA/Sidoarjo/PVT/2022	cattle	99.7	0	O	ME-SA	Ind-2001	e
viba_51016	ISA/1/2022	cattle	99.7	0	O	ME-SA	Ind-2001	e
viba_51279	ISA/Pemalang/A04222613/2022	cattle	99.7	0	O	ME-SA	Ind-2001	e

Most Closely Related Prototype Sequences

see <http://www.wrlfmd.org/fmdv-genome/fmd-prototype-strains>

sequence	virus name	Host	% Id.	# Ambig.	serotype	topotype	lineage	sublineage
viba_30238	MUR/19/2016	cattle	95.6	0	O	ME-SA	Ind-2001	e
viba_293	BHU/3/2009	cattle	92.3	0	O	ME-SA	Ind-2001	d
viba_541	OMN/7/2001	bovine	91.8	0	O	ME-SA	Ind-2001	b
viba_705	KUW/3/97	bovine	90.9	0	O	ME-SA	Ind-2001	a
viba_397	UAE/4/2008	gazelle	89.6	0	O	ME-SA	Ind-2001	c
viba_766	IRN/31/2009	cattle	88.8	0	O	ME-SA	PanAsia-2	FAR-09
viba_650	IRN/8/2005	ovine	88.6	0	O	ME-SA	PanAsia-2	
viba_719	IRN/88/2009		88.6	0	O	ME-SA	PanAsia-2	ANT-10
viba_285	UKG/35/2001	porcine	88.5	0	O	ME-SA	PanAsia	
viba_491	TUR/257/2008		88.5	0	O	ME-SA	PanAsia-2	TER-08

Virus sample name:	ISA/DeliSerdang/A01220762/2022
Sender reference:	ISA/DeliSerdang/A01220762/2022
Location of origin:	Deli Serdang regency, North Sumatra province
Country of origin:	Indonesia
Date of collection:	08/05/2022
Host species:	cattle
Serotype:	O
Topotype:	ME-SA
Lineage:	Ind-2001
Sublineage:	e
Sequence length:	633
Ambiguities:	0
Material submitted for sequencing:	n/a
Harvest date of material:	n/a
Primers:	n/a
Received for sequencing:	n/a
Created:	01/08/2022
Last updated:	01/08/2022
VIBASys IDs: sample 51201, genome 51202, sequence viba_51203, sequencing info 51204	

Most Closely Related Sequences

sequence	virus name	Host	% Id.	# Ambig.	serotype	topotype	lineage	sublineage
viba_51199	ISA/Langkat/A01220761/2022	cattle	100.0	0	O	ME-SA	Ind-2001	e
viba_51191	ISA/Tamiang/01220759-P4/2022	cattle	99.7	0	O	ME-SA	Ind-2001	e
viba_51291	ISA/HSU/A0522099-5/2022	goat	99.7	0	O	ME-SA	Ind-2001	e
viba_51287	ISA/Magetan/A04222620/2022	cattle	99.7	0	O	ME-SA	Ind-2001	e
viba_51223	ISA/Probolinggo/PVT/2022	cattle	99.7	0	O	ME-SA	Ind-2001	e
viba_51020	ISA/3/2022	cattle	99.7	0	O	ME-SA	Ind-2001	e
viba_50625	PVT-S234/ISA/2022	cattle	99.7	0	O	ME-SA	Ind-2001	e
viba_51211	ISA/Sidoarjo/PVT/2022	cattle	99.7	0	O	ME-SA	Ind-2001	e
viba_51016	ISA/1/2022	cattle	99.7	0	O	ME-SA	Ind-2001	e
viba_51279	ISA/Pemalang/A04222613/2022	cattle	99.7	0	O	ME-SA	Ind-2001	e

Most Closely Related Prototype Sequences

see <http://www.wrlfmd.org/fmdv-genome/fmd-prototype-strains>

sequence	virus name	Host	% Id.	# Ambig.	serotype	topotype	lineage	sublineage
viba_30238	MUR/19/2016	cattle	95.6	0	O	ME-SA	Ind-2001	e
viba_293	BHU/3/2009	cattle	92.3	0	O	ME-SA	Ind-2001	d
viba_541	OMN/7/2001	bovine	91.8	0	O	ME-SA	Ind-2001	b
viba_705	KUW/3/97	bovine	90.9	0	O	ME-SA	Ind-2001	a
viba_397	UAE/4/2008	gazelle	89.6	0	O	ME-SA	Ind-2001	c
viba_766	IRN/31/2009	cattle	88.8	0	O	ME-SA	PanAsia-2	FAR-09
viba_650	IRN/8/2005	ovine	88.6	0	O	ME-SA	PanAsia-2	
viba_719	IRN/88/2009		88.6	0	O	ME-SA	PanAsia-2	ANT-10
viba_285	UKG/35/2001	porcine	88.5	0	O	ME-SA	PanAsia	
viba_491	TUR/257/2008		88.5	0	O	ME-SA	PanAsia-2	TER-08

Virus sample name:	ISA/Lamongan/PVT-VL6/2022
Sender reference:	ISA/Lamongan/PVT-VL6/2022
Location of origin:	Lamongan regency, East Java Province
Country of origin:	Indonesia
Date of collection:	04/05/2022
Host species:	cattle
Serotype:	O
Topotype:	ME-SA
Lineage:	Ind-2001
Sublineage:	e
Sequence length:	633
Ambiguities:	0
Material submitted for sequencing:	n/a
Harvest date of material:	n/a
Primers:	n/a
Received for sequencing:	n/a
Created:	01/08/2022
Last updated:	01/08/2022

VIBASys IDs: sample 51205, genome 51206, sequence viba_51207, sequencing info 51208

Most Closely Related Sequences

sequence	virus name	Host	% Id.	# Ambig.	serotype	topotype	lineage	sublineage
viba_51291	ISA/HSU/A0522099-5/2022	goat	100.0	0	O	ME-SA	Ind-2001	e
viba_51287	ISA/Magetan/A04222620/2022	cattle	100.0	0	O	ME-SA	Ind-2001	e
viba_51223	ISA/Probolinggo/PVT/2022	cattle	100.0	0	O	ME-SA	Ind-2001	e
viba_51020	ISA/3/2022	cattle	100.0	0	O	ME-SA	Ind-2001	e
viba_50625	PVT-S234/ISA/2022	cattle	100.0	0	O	ME-SA	Ind-2001	e
viba_51211	ISA/Sidoarjo/PVT/2022	cattle	100.0	0	O	ME-SA	Ind-2001	e
viba_51016	ISA/1/2022	cattle	100.0	0	O	ME-SA	Ind-2001	e
viba_51279	ISA/Pemalang/A04222613/2022	cattle	100.0	0	O	ME-SA	Ind-2001	e
viba_51239	ISA/PangkalPinang/PVT/2022	cattle	100.0	0	O	ME-SA	Ind-2001	e
viba_51219	ISA/Babel/PVT-AN/2022	cattle	100.0	0	O	ME-SA	Ind-2001	e

Most Closely Related Prototype Sequences

see <http://www.wrlfmd.org/fmdv-genome/fmd-prototype-strains>

sequence	virus name	Host	% Id.	# Ambig.	serotype	topotype	lineage	sublineage
viba_30238	MUR/19/2016	cattle	95.3	0	O	ME-SA	Ind-2001	e
viba_293	BHU/3/2009	cattle	91.9	0	O	ME-SA	Ind-2001	d
viba_541	OMN/7/2001	bovine	91.5	0	O	ME-SA	Ind-2001	b
viba_705	KUW/3/97	bovine	90.5	0	O	ME-SA	Ind-2001	a
viba_397	UAE/4/2008	gazelle	89.3	0	O	ME-SA	Ind-2001	c
viba_650	IRN/8/2005	ovine	88.3	0	O	ME-SA	PanAsia-2	
viba_285	UKG/35/2001	porcine	88.2	0	O	ME-SA	PanAsia	
viba_359	Manisa/TUR/69		87.8	0	O	ME-SA		
viba_666	IRN/18/2010	cattle	87.7	0	O	ME-SA	PanAsia-2	BAL-09
viba_719	IRN/88/2009		87.6	0	O	ME-SA	PanAsia-2	ANT-10

Virus sample name:	ISA/Sidoarjo/PVT/2022
Sender reference:	ISA/Sidoarjo/PVT/2022
Location of origin:	Sidoarjo regency, East Java province
Country of origin:	Indonesia
Date of collection:	04/05/2022
Host species:	cattle
Serotype:	O
Topotype:	ME-SA
Lineage:	Ind-2001
Sublineage:	e
Sequence length:	633
Ambiguities:	0
Material submitted for sequencing:	n/a
Harvest date of material:	n/a
Primers:	n/a
Received for sequencing:	n/a
Created:	01/08/2022
Last updated:	01/08/2022
VIBASys IDs: sample 51209, genome 51210, sequence viba_51211, sequencing info 51212	

Most Closely Related Sequences

sequence	virus name	Host	% Id.	# Ambig.	serotype	topotype	lineage	sublineage
viba_51291	ISA/HSU/A0522099-5/2022	goat	100.0	0	O	ME-SA	Ind-2001	e
viba_51287	ISA/Magetan/A04222620/2022	cattle	100.0	0	O	ME-SA	Ind-2001	e
viba_51223	ISA/Probolinggo/PVT/2022	cattle	100.0	0	O	ME-SA	Ind-2001	e
viba_51020	ISA/3/2022	cattle	100.0	0	O	ME-SA	Ind-2001	e
viba_50625	PVT-S234/ISA/2022	cattle	100.0	0	O	ME-SA	Ind-2001	e
viba_51016	ISA/1/2022	cattle	100.0	0	O	ME-SA	Ind-2001	e
viba_51279	ISA/Pemalang/A04222613/2022	cattle	100.0	0	O	ME-SA	Ind-2001	e
viba_51239	ISA/PangkalPinang/PVT/2022	cattle	100.0	0	O	ME-SA	Ind-2001	e
viba_51219	ISA/Babel/PVT-AN/2022	cattle	100.0	0	O	ME-SA	Ind-2001	e
viba_51235	ISA/Pasuruan/A04222583/2022	cattle	100.0	0	O	ME-SA	Ind-2001	e

Most Closely Related Prototype Sequences

see <http://www.wrlfmd.org/fmdv-genome/fmd-prototype-strains>

sequence	virus name	Host	% Id.	# Ambig.	serotype	topotype	lineage	sublineage
viba_30238	MUR/19/2016	cattle	95.3	0	O	ME-SA	Ind-2001	e
viba_293	BHU/3/2009	cattle	91.9	0	O	ME-SA	Ind-2001	d
viba_541	OMN/7/2001	bovine	91.5	0	O	ME-SA	Ind-2001	b
viba_705	KUW/3/97	bovine	90.5	0	O	ME-SA	Ind-2001	a
viba_397	UAE/4/2008	gazelle	89.3	0	O	ME-SA	Ind-2001	c
viba_650	IRN/8/2005	ovine	88.3	0	O	ME-SA	PanAsia-2	
viba_285	UKG/35/2001	porcine	88.2	0	O	ME-SA	PanAsia	
viba_359	Manisa/TUR/69		87.8	0	O	ME-SA		
viba_666	IRN/18/2010	cattle	87.7	0	O	ME-SA	PanAsia-2	BAL-09
viba_719	IRN/88/2009		87.6	0	O	ME-SA	PanAsia-2	ANT-10

Virus sample name:	ISA/Mojokerto/PVT/2022
Sender reference:	ISA/Mojokerto/PVT/2022
Location of origin:	Mojokerto, East Java province
Country of origin:	Indonesia
Date of collection:	04/05/2022
Host species:	cattle
Serotype:	O
Topotype:	ME-SA
Lineage:	Ind-2001
Sublineage:	e
Sequence length:	633
Ambiguities:	0
Material submitted for sequencing:	n/a
Harvest date of material:	n/a
Primers:	n/a
Received for sequencing:	n/a
Created:	01/08/2022
Last updated:	01/08/2022
VIBASys IDs: sample 51213, genome 51214, sequence viba_51215, sequencing info 51216	

Most Closely Related Sequences

sequence	virus name	Host	% Id.	# Ambig.	serotype	topotype	lineage	sublineage
viba_51291	ISA/HSU/A0522099-5/2022	goat	100.0	0	O	ME-SA	Ind-2001	e
viba_51287	ISA/Magetan/A04222620/2022	cattle	100.0	0	O	ME-SA	Ind-2001	e
viba_51223	ISA/Probolinggo/PVT/2022	cattle	100.0	0	O	ME-SA	Ind-2001	e
viba_51020	ISA/3/2022	cattle	100.0	0	O	ME-SA	Ind-2001	e
viba_50625	PVT-S234/ISA/2022	cattle	100.0	0	O	ME-SA	Ind-2001	e
viba_51211	ISA/Sidoarjo/PVT/2022	cattle	100.0	0	O	ME-SA	Ind-2001	e
viba_51016	ISA/1/2022	cattle	100.0	0	O	ME-SA	Ind-2001	e
viba_51279	ISA/Pemalang/A04222613/2022	cattle	100.0	0	O	ME-SA	Ind-2001	e
viba_51239	ISA/PangkalPinang/PVT/2022	cattle	100.0	0	O	ME-SA	Ind-2001	e
viba_51219	ISA/Babel/PVT-AN/2022	cattle	100.0	0	O	ME-SA	Ind-2001	e

Most Closely Related Prototype Sequences

see <http://www.wrlfmd.org/fmdv-genome/fmd-prototype-strains>

sequence	virus name	Host	% Id.	# Ambig.	serotype	topotype	lineage	sublineage
viba_30238	MUR/19/2016	cattle	95.3	0	O	ME-SA	Ind-2001	e
viba_293	BHU/3/2009	cattle	91.9	0	O	ME-SA	Ind-2001	d
viba_541	OMN/7/2001	bovine	91.5	0	O	ME-SA	Ind-2001	b
viba_705	KUW/3/97	bovine	90.5	0	O	ME-SA	Ind-2001	a
viba_397	UAE/4/2008	gazelle	89.3	0	O	ME-SA	Ind-2001	c
viba_650	IRN/8/2005	ovine	88.3	0	O	ME-SA	PanAsia-2	
viba_285	UKG/35/2001	porcine	88.2	0	O	ME-SA	PanAsia	
viba_359	Manisa/TUR/69		87.8	0	O	ME-SA		
viba_666	IRN/18/2010	cattle	87.7	0	O	ME-SA	PanAsia-2	BAL-09
viba_719	IRN/88/2009		87.6	0	O	ME-SA	PanAsia-2	ANT-10

Virus sample name:	ISA/Babel/PVT-AN/2022
Sender reference:	ISA/Babel/PVT-AN/2022
Location of origin:	Bangka Belitung Islands province, Sumatra
Country of origin:	Indonesia
Date of collection:	07/05/2022
Host species:	cattle
Serotype:	O
Topotype:	ME-SA
Lineage:	Ind-2001
Sublineage:	e
Sequence length:	633
Ambiguities:	0
Material submitted for sequencing:	n/a
Harvest date of material:	n/a
Primers:	n/a
Received for sequencing:	n/a
Created:	01/08/2022
Last updated:	01/08/2022
VIBASys IDs: sample 51217, genome 51218, sequence viba_51219, sequencing info 51220	

Most Closely Related Sequences

sequence	virus name	Host	% Id.	# Ambig.	serotype	topotype	lineage	sublineage
viba_51291	ISA/HSU/A0522099-5/2022	goat	100.0	0	O	ME-SA	Ind-2001	e
viba_51287	ISA/Magetan/A04222620/2022	cattle	100.0	0	O	ME-SA	Ind-2001	e
viba_51223	ISA/Probolinggo/PVT/2022	cattle	100.0	0	O	ME-SA	Ind-2001	e
viba_51020	ISA/3/2022	cattle	100.0	0	O	ME-SA	Ind-2001	e
viba_50625	PVT-S234/ISA/2022	cattle	100.0	0	O	ME-SA	Ind-2001	e
viba_51211	ISA/Sidoarjo/PVT/2022	cattle	100.0	0	O	ME-SA	Ind-2001	e
viba_51016	ISA/1/2022	cattle	100.0	0	O	ME-SA	Ind-2001	e
viba_51279	ISA/Pemalang/A04222613/2022	cattle	100.0	0	O	ME-SA	Ind-2001	e
viba_51239	ISA/PangkalPinang/PVT/2022	cattle	100.0	0	O	ME-SA	Ind-2001	e
viba_51235	ISA/Pasuruan/A04222583/2022	cattle	100.0	0	O	ME-SA	Ind-2001	e

Most Closely Related Prototype Sequences

see <http://www.wrlfmd.org/fmdv-genome/fmd-prototype-strains>

sequence	virus name	Host	% Id.	# Ambig.	serotype	topotype	lineage	sublineage
viba_30238	MUR/19/2016	cattle	95.3	0	O	ME-SA	Ind-2001	e
viba_293	BHU/3/2009	cattle	91.9	0	O	ME-SA	Ind-2001	d
viba_541	OMN/7/2001	bovine	91.5	0	O	ME-SA	Ind-2001	b
viba_705	KUW/3/97	bovine	90.5	0	O	ME-SA	Ind-2001	a
viba_397	UAE/4/2008	gazelle	89.3	0	O	ME-SA	Ind-2001	c
viba_650	IRN/8/2005	ovine	88.3	0	O	ME-SA	PanAsia-2	
viba_285	UKG/35/2001	porcine	88.2	0	O	ME-SA	PanAsia	
viba_359	Manisa/TUR/69		87.8	0	O	ME-SA		
viba_666	IRN/18/2010	cattle	87.7	0	O	ME-SA	PanAsia-2	BAL-09
viba_719	IRN/88/2009		87.6	0	O	ME-SA	PanAsia-2	ANT-10

Virus sample name:	ISA/Probolinggo/PVT/2022
Sender reference:	ISA/Probolinggo/PVT/2022
Location of origin:	Probolinggo, East Java province
Country of origin:	Indonesia
Date of collection:	08/05/2022
Host species:	cattle
Serotype:	O
Topotype:	ME-SA
Lineage:	Ind-2001
Sublineage:	e
Sequence length:	633
Ambiguities:	0
Material submitted for sequencing:	n/a
Harvest date of material:	n/a
Primers:	n/a
Received for sequencing:	n/a
Created:	01/08/2022
Last updated:	01/08/2022
VIBASys IDs: sample 51221, genome 51222, sequence viba_51223, sequencing info 51224	

Most Closely Related Sequences

sequence	virus name	Host	% Id.	# Ambig.	serotype	topotype	lineage	sublineage
viba_51291	ISA/HSU/A0522099-5/2022	goat	100.0	0	O	ME-SA	Ind-2001	e
viba_51287	ISA/Magetan/A04222620/2022	cattle	100.0	0	O	ME-SA	Ind-2001	e
viba_51020	ISA/3/2022	cattle	100.0	0	O	ME-SA	Ind-2001	e
viba_50625	PVT-S234/ISA/2022	cattle	100.0	0	O	ME-SA	Ind-2001	e
viba_51211	ISA/Sidoarjo/PVT/2022	cattle	100.0	0	O	ME-SA	Ind-2001	e
viba_51016	ISA/1/2022	cattle	100.0	0	O	ME-SA	Ind-2001	e
viba_51279	ISA/Pemalang/A04222613/2022	cattle	100.0	0	O	ME-SA	Ind-2001	e
viba_51239	ISA/PangkalPinang/PVT/2022	cattle	100.0	0	O	ME-SA	Ind-2001	e
viba_51219	ISA/Babel/PVT-AN/2022	cattle	100.0	0	O	ME-SA	Ind-2001	e
viba_51235	ISA/Pasuruan/A04222583/2022	cattle	100.0	0	O	ME-SA	Ind-2001	e

Most Closely Related Prototype Sequences

see <http://www.wrlfmd.org/fmdv-genome/fmd-prototype-strains>

sequence	virus name	Host	% Id.	# Ambig.	serotype	topotype	lineage	sublineage
viba_30238	MUR/19/2016	cattle	95.3	0	O	ME-SA	Ind-2001	e
viba_293	BHU/3/2009	cattle	91.9	0	O	ME-SA	Ind-2001	d
viba_541	OMN/7/2001	bovine	91.5	0	O	ME-SA	Ind-2001	b
viba_705	KUW/3/97	bovine	90.5	0	O	ME-SA	Ind-2001	a
viba_397	UAE/4/2008	gazelle	89.3	0	O	ME-SA	Ind-2001	c
viba_650	IRN/8/2005	ovine	88.3	0	O	ME-SA	PanAsia-2	
viba_285	UKG/35/2001	porcine	88.2	0	O	ME-SA	PanAsia	
viba_359	Manisa/TUR/69		87.8	0	O	ME-SA		
viba_666	IRN/18/2010	cattle	87.7	0	O	ME-SA	PanAsia-2	BAL-09
viba_719	IRN/88/2009		87.6	0	O	ME-SA	PanAsia-2	ANT-10

Virus sample name:	ISA/Malang/PVT/2022
Sender reference:	ISA/Malang/PVT/2022
Location of origin:	Malang, East Java province
Country of origin:	Indonesia
Date of collection:	08/05/2022
Host species:	cattle
Serotype:	O
Topotype:	ME-SA
Lineage:	Ind-2001
Sublineage:	e
Sequence length:	633
Ambiguities:	0
Material submitted for sequencing:	n/a
Harvest date of material:	n/a
Primers:	n/a
Received for sequencing:	n/a
Created:	01/08/2022
Last updated:	01/08/2022

VIBASys IDs: sample 51225, genome 51226, sequence viba_51227, sequencing info 51228

Most Closely Related Sequences

sequence	virus name	Host	% Id.	# Ambig.	serotype	topotype	lineage	sublineage
viba_51291	ISA/HSU/A0522099-5/2022	goat	99.8	0	O	ME-SA	Ind-2001	e
viba_51287	ISA/Magetan/A04222620/2022	cattle	99.8	0	O	ME-SA	Ind-2001	e
viba_51223	ISA/Probolinggo/PVT/2022	cattle	99.8	0	O	ME-SA	Ind-2001	e
viba_51020	ISA/3/2022	cattle	99.8	0	O	ME-SA	Ind-2001	e
viba_50625	PVT-S234/ISA/2022	cattle	99.8	0	O	ME-SA	Ind-2001	e
viba_51211	ISA/Sidoarjo/PVT/2022	cattle	99.8	0	O	ME-SA	Ind-2001	e
viba_51016	ISA/1/2022	cattle	99.8	0	O	ME-SA	Ind-2001	e
viba_51279	ISA/Pemalang/A04222613/2022	cattle	99.8	0	O	ME-SA	Ind-2001	e
viba_51239	ISA/PangkalPinang/PVT/2022	cattle	99.8	0	O	ME-SA	Ind-2001	e
viba_51219	ISA/Babel/PVT-AN/2022	cattle	99.8	0	O	ME-SA	Ind-2001	e

Most Closely Related Prototype Sequences

see <http://www.wrlfmd.org/fmdv-genome/fmd-prototype-strains>

sequence	virus name	Host	% Id.	# Ambig.	serotype	topotype	lineage	sublineage
viba_30238	MUR/19/2016	cattle	95.3	0	O	ME-SA	Ind-2001	e
viba_293	BHU/3/2009	cattle	91.9	0	O	ME-SA	Ind-2001	d
viba_541	OMN/7/2001	bovine	91.5	0	O	ME-SA	Ind-2001	b
viba_705	KUW/3/97	bovine	90.5	0	O	ME-SA	Ind-2001	a
viba_397	UAE/4/2008	gazelle	89.3	0	O	ME-SA	Ind-2001	c
viba_650	IRN/8/2005	ovine	88.3	0	O	ME-SA	PanAsia-2	
viba_285	UKG/35/2001	porcine	88.2	0	O	ME-SA	PanAsia	
viba_359	Manisa/TUR/69		87.8	0	O	ME-SA		
viba_666	IRN/18/2010	cattle	87.7	0	O	ME-SA	PanAsia-2	BAL-09
viba_719	IRN/88/2009		87.6	0	O	ME-SA	PanAsia-2	ANT-10

Virus sample name:	ISA/Boyolali/A04222562/2022
Sender reference:	ISA/Boyolali/A04222562/2022
Location of origin:	Boyolali regency, Central Java province
Country of origin:	Indonesia
Date of collection:	08/05/2022
Host species:	cattle
Serotype:	O
Topotype:	ME-SA
Lineage:	Ind-2001
Sublineage:	e
Sequence length:	633
Ambiguities:	0
Material submitted for sequencing:	n/a
Harvest date of material:	n/a
Primers:	n/a
Received for sequencing:	n/a
Created:	01/08/2022
Last updated:	01/08/2022
VIBASys IDs: sample 51229, genome 51230, sequence viba_51231, sequencing info 51232	

Most Closely Related Sequences

sequence	virus name	Host	% Id.	# Ambig.	serotype	topotype	lineage	sublineage
viba_51263	ISA/Klaten/A04222596/2022	cattle	100.0	0	O	ME-SA	Ind-2001	e
viba_51247	ISA/LTI/A06220466/2022	cattle	99.8	0	O	ME-SA	Ind-2001	e
viba_51283	ISA/Semarang/A04222614/2022	cattle	99.8	0	O	ME-SA	Ind-2001	e
viba_51291	ISA/HSU/A0522099-5/2022	goat	99.5	0	O	ME-SA	Ind-2001	e
viba_51287	ISA/Magetan/A04222620/2022	cattle	99.5	0	O	ME-SA	Ind-2001	e
viba_51223	ISA/Probolinggo/PVT/2022	cattle	99.5	0	O	ME-SA	Ind-2001	e
viba_51020	ISA/3/2022	cattle	99.5	0	O	ME-SA	Ind-2001	e
viba_50625	PVT-S234/ISA/2022	cattle	99.5	0	O	ME-SA	Ind-2001	e
viba_51211	ISA/Sidoarjo/PVT/2022	cattle	99.5	0	O	ME-SA	Ind-2001	e
viba_51016	ISA/1/2022	cattle	99.5	0	O	ME-SA	Ind-2001	e

Most Closely Related Prototype Sequences

see <http://www.wrlfmd.org/fmdv-genome/fmd-prototype-strains>

sequence	virus name	Host	% Id.	# Ambig.	serotype	topotype	lineage	sublineage
viba_30238	MUR/19/2016	cattle	95.4	0	O	ME-SA	Ind-2001	e
viba_293	BHU/3/2009	cattle	91.9	0	O	ME-SA	Ind-2001	d
viba_541	OMN/7/2001	bovine	91.5	0	O	ME-SA	Ind-2001	b
viba_705	KUW/3/97	bovine	90.5	0	O	ME-SA	Ind-2001	a
viba_397	UAE/4/2008	gazelle	89.3	0	O	ME-SA	Ind-2001	c
viba_650	IRN/8/2005	ovine	88.3	0	O	ME-SA	PanAsia-2	
viba_285	UKG/35/2001	porcine	88.2	0	O	ME-SA	PanAsia	
viba_666	IRN/18/2010	cattle	88.0	0	O	ME-SA	PanAsia-2	BAL-09
viba_359	Manisa/TUR/69		87.8	0	O	ME-SA		
viba_766	IRN/31/2009	cattle	87.5	0	O	ME-SA	PanAsia-2	FAR-09

Virus sample name:	ISA/Pasuruan/A04222583/2022
Sender reference:	ISA/Pasuruan/A04222583/2022
Location of origin:	Pasuruan, East Java province
Country of origin:	Indonesia
Date of collection:	09/05/2022
Host species:	cattle
Serotype:	O
Topotype:	ME-SA
Lineage:	Ind-2001
Sublineage:	e
Sequence length:	633
Ambiguities:	0
Material submitted for sequencing:	n/a
Harvest date of material:	n/a
Primers:	n/a
Received for sequencing:	n/a
Created:	01/08/2022
Last updated:	01/08/2022
VIBASys IDs: sample 51233, genome 51234, sequence viba_51235, sequencing info 51236	

Most Closely Related Sequences

sequence	virus name	Host	% Id.	# Ambig.	serotype	topotype	lineage	sublineage
viba_51291	ISA/HSU/A0522099-5/2022	goat	100.0	0	O	ME-SA	Ind-2001	e
viba_51287	ISA/Magetan/A04222620/2022	cattle	100.0	0	O	ME-SA	Ind-2001	e
viba_51223	ISA/Probolinggo/PVT/2022	cattle	100.0	0	O	ME-SA	Ind-2001	e
viba_51020	ISA/3/2022	cattle	100.0	0	O	ME-SA	Ind-2001	e
viba_50625	PVT-S234/ISA/2022	cattle	100.0	0	O	ME-SA	Ind-2001	e
viba_51211	ISA/Sidoarjo/PVT/2022	cattle	100.0	0	O	ME-SA	Ind-2001	e
viba_51016	ISA/1/2022	cattle	100.0	0	O	ME-SA	Ind-2001	e
viba_51279	ISA/Pemalang/A04222613/2022	cattle	100.0	0	O	ME-SA	Ind-2001	e
viba_51239	ISA/PangkalPinang/PVT/2022	cattle	100.0	0	O	ME-SA	Ind-2001	e
viba_51219	ISA/Babel/PVT-AN/2022	cattle	100.0	0	O	ME-SA	Ind-2001	e

Most Closely Related Prototype Sequences

see <http://www.wrlfmd.org/fmdv-genome/fmd-prototype-strains>

sequence	virus name	Host	% Id.	# Ambig.	serotype	topotype	lineage	sublineage
viba_30238	MUR/19/2016	cattle	95.3	0	O	ME-SA	Ind-2001	e
viba_293	BHU/3/2009	cattle	91.9	0	O	ME-SA	Ind-2001	d
viba_541	OMN/7/2001	bovine	91.5	0	O	ME-SA	Ind-2001	b
viba_705	KUW/3/97	bovine	90.5	0	O	ME-SA	Ind-2001	a
viba_397	UAE/4/2008	gazelle	89.3	0	O	ME-SA	Ind-2001	c
viba_650	IRN/8/2005	ovine	88.3	0	O	ME-SA	PanAsia-2	
viba_285	UKG/35/2001	porcine	88.2	0	O	ME-SA	PanAsia	
viba_359	Manisa/TUR/69		87.8	0	O	ME-SA		
viba_666	IRN/18/2010	cattle	87.7	0	O	ME-SA	PanAsia-2	BAL-09
viba_719	IRN/88/2009		87.6	0	O	ME-SA	PanAsia-2	ANT-10

Virus sample name:	ISA/PangkalPinang/PVT/2022
Sender reference:	ISA/PangkalPinang/PVT/2022
Location of origin:	Pangkal Pinang, Bangka Belitung Islands province, Sumatra
Country of origin:	Indonesia
Date of collection:	09/05/2022
Host species:	cattle
Serotype:	O
Topotype:	ME-SA
Lineage:	Ind-2001
Sublineage:	e
Sequence length:	633
Ambiguities:	0
Material submitted for sequencing:	n/a
Harvest date of material:	n/a
Primers:	n/a
Received for sequencing:	n/a
Created:	01/08/2022
Last updated:	01/08/2022
VIBASys IDs: sample 51237, genome 51238, sequence viba_51239, sequencing info 51240	

Most Closely Related Sequences

sequence	virus name	Host	% Id.	# Ambig.	serotype	topotype	lineage	sublineage
viba_51291	ISA/HSU/A0522099-5/2022	goat	100.0	0	O	ME-SA	Ind-2001	e
viba_51287	ISA/Magetan/A04222620/2022	cattle	100.0	0	O	ME-SA	Ind-2001	e
viba_51223	ISA/Probolinggo/PVT/2022	cattle	100.0	0	O	ME-SA	Ind-2001	e
viba_51020	ISA/3/2022	cattle	100.0	0	O	ME-SA	Ind-2001	e
viba_50625	PVT-S234/ISA/2022	cattle	100.0	0	O	ME-SA	Ind-2001	e
viba_51211	ISA/Sidoarjo/PVT/2022	cattle	100.0	0	O	ME-SA	Ind-2001	e
viba_51016	ISA/1/2022	cattle	100.0	0	O	ME-SA	Ind-2001	e
viba_51279	ISA/Pemalang/A04222613/2022	cattle	100.0	0	O	ME-SA	Ind-2001	e
viba_51219	ISA/Babel/PVT-AN/2022	cattle	100.0	0	O	ME-SA	Ind-2001	e
viba_51235	ISA/Pasuruan/A04222583/2022	cattle	100.0	0	O	ME-SA	Ind-2001	e

Most Closely Related Prototype Sequences

see <http://www.wrlfmd.org/fmdv-genome/fmd-prototype-strains>

sequence	virus name	Host	% Id.	# Ambig.	serotype	topotype	lineage	sublineage
viba_30238	MUR/19/2016	cattle	95.3	0	O	ME-SA	Ind-2001	e
viba_293	BHU/3/2009	cattle	91.9	0	O	ME-SA	Ind-2001	d
viba_541	OMN/7/2001	bovine	91.5	0	O	ME-SA	Ind-2001	b
viba_705	KUW/3/97	bovine	90.5	0	O	ME-SA	Ind-2001	a
viba_397	UAE/4/2008	gazelle	89.3	0	O	ME-SA	Ind-2001	c
viba_650	IRN/8/2005	ovine	88.3	0	O	ME-SA	PanAsia-2	
viba_285	UKG/35/2001	porcine	88.2	0	O	ME-SA	PanAsia	
viba_359	Manisa/TUR/69		87.8	0	O	ME-SA		
viba_666	IRN/18/2010	cattle	87.7	0	O	ME-SA	PanAsia-2	BAL-09
viba_719	IRN/88/2009		87.6	0	O	ME-SA	PanAsia-2	ANT-10

Virus sample name:	ISA/LTE/A06220465/2022
Sender reference:	ISA/LTE/A06220465/2022
Location of origin:	LTE
Country of origin:	Indonesia
Date of collection:	09/05/2022
Host species:	cattle
Serotype:	O
Topotype:	ME-SA
Lineage:	Ind-2001
Sublineage:	e
Sequence length:	633
Ambiguities:	0
Material submitted for sequencing:	n/a
Harvest date of material:	n/a
Primers:	n/a
Received for sequencing:	n/a
Created:	01/08/2022
Last updated:	01/08/2022
VIBASys IDs: sample 51241, genome 51242, sequence viba_51243, sequencing info 51244	

Most Closely Related Sequences

sequence	virus name	Host	% Id.	# Ambig.	serotype	topotype	lineage	sublineage
viba_51247	ISA/LTI/A06220466/2022	cattle	99.7	0	O	ME-SA	Ind-2001	e
viba_51263	ISA/Klaten/A04222596/2022	cattle	99.5	0	O	ME-SA	Ind-2001	e
viba_51231	ISA/Boyolali/A04222562/2022	cattle	99.5	0	O	ME-SA	Ind-2001	e
viba_51283	ISA/Semarang/A04222614/2022	cattle	99.4	0	O	ME-SA	Ind-2001	e
viba_51291	ISA/HSU/A0522099-5/2022	goat	99.1	0	O	ME-SA	Ind-2001	e
viba_51287	ISA/Magetan/A04222620/2022	cattle	99.1	0	O	ME-SA	Ind-2001	e
viba_51223	ISA/Probolinggo/PVT/2022	cattle	99.1	0	O	ME-SA	Ind-2001	e
viba_51020	ISA/3/2022	cattle	99.1	0	O	ME-SA	Ind-2001	e
viba_50625	PVT-S234/ISA/2022	cattle	99.1	0	O	ME-SA	Ind-2001	e
viba_51211	ISA/Sidoarjo/PVT/2022	cattle	99.1	0	O	ME-SA	Ind-2001	e

Most Closely Related Prototype Sequences

see <http://www.wrlfmd.org/fmdv-genome/fmd-prototype-strains>

sequence	virus name	Host	% Id.	# Ambig.	serotype	topotype	lineage	sublineage
viba_30238	MUR/19/2016	cattle	95.4	0	O	ME-SA	Ind-2001	e
viba_293	BHU/3/2009	cattle	92.1	0	O	ME-SA	Ind-2001	d
viba_541	OMN/7/2001	bovine	92.0	0	O	ME-SA	Ind-2001	b
viba_705	KUW/3/97	bovine	91.0	0	O	ME-SA	Ind-2001	a
viba_397	UAE/4/2008	gazelle	89.6	0	O	ME-SA	Ind-2001	c
viba_650	IRN/8/2005	ovine	88.3	0	O	ME-SA	PanAsia-2	
viba_285	UKG/35/2001	porcine	88.2	0	O	ME-SA	PanAsia	
viba_359	Manisa/TUR/69		88.0	0	O	ME-SA		
viba_666	IRN/18/2010	cattle	88.0	0	O	ME-SA	PanAsia-2	BAL-09
viba_766	IRN/31/2009	cattle	87.5	0	O	ME-SA	PanAsia-2	FAR-09

Virus sample name:	ISA/LTI/A06220466/2022
Sender reference:	ISA/LTI/A06220466/2022
Location of origin:	LTI
Country of origin:	Indonesia
Date of collection:	09/05/2022
Host species:	cattle
Serotype:	O
Topotype:	ME-SA
Lineage:	Ind-2001
Sublineage:	e
Sequence length:	633
Ambiguities:	0
Material submitted for sequencing:	n/a
Harvest date of material:	n/a
Primers:	n/a
Received for sequencing:	n/a
Created:	01/08/2022
Last updated:	01/08/2022
VIBASys IDs: sample 51245, genome 51246, sequence viba_51247, sequencing info 51248	

Most Closely Related Sequences

sequence	virus name	Host	% Id.	# Ambig.	serotype	topotype	lineage	sublineage
viba_51263	ISA/Klaten/A04222596/2022	cattle	99.8	0	O	ME-SA	Ind-2001	e
viba_51231	ISA/Boyolali/A04222562/2022	cattle	99.8	0	O	ME-SA	Ind-2001	e
viba_51243	ISA/LTE/A06220465/2022	cattle	99.7	0	O	ME-SA	Ind-2001	e
viba_51283	ISA/Semarang/A04222614/2022	cattle	99.7	0	O	ME-SA	Ind-2001	e
viba_51291	ISA/HSU/A0522099-5/2022	goat	99.4	0	O	ME-SA	Ind-2001	e
viba_51287	ISA/Magetan/A04222620/2022	cattle	99.4	0	O	ME-SA	Ind-2001	e
viba_51223	ISA/Probolinggo/PVT/2022	cattle	99.4	0	O	ME-SA	Ind-2001	e
viba_51020	ISA/3/2022	cattle	99.4	0	O	ME-SA	Ind-2001	e
viba_50625	PVT-S234/ISA/2022	cattle	99.4	0	O	ME-SA	Ind-2001	e
viba_51211	ISA/Sidoarjo/PVT/2022	cattle	99.4	0	O	ME-SA	Ind-2001	e

Most Closely Related Prototype Sequences

see <http://www.wrlfmd.org/fmdv-genome/fmd-prototype-strains>

sequence	virus name	Host	% Id.	# Ambig.	serotype	topotype	lineage	sublineage
viba_30238	MUR/19/2016	cattle	95.3	0	O	ME-SA	Ind-2001	e
viba_293	BHU/3/2009	cattle	91.8	0	O	ME-SA	Ind-2001	d
viba_541	OMN/7/2001	bovine	91.6	0	O	ME-SA	Ind-2001	b
viba_705	KUW/3/97	bovine	90.7	0	O	ME-SA	Ind-2001	a
viba_397	UAE/4/2008	gazelle	89.4	0	O	ME-SA	Ind-2001	c
viba_650	IRN/8/2005	ovine	88.5	0	O	ME-SA	PanAsia-2	
viba_285	UKG/35/2001	porcine	88.3	0	O	ME-SA	PanAsia	
viba_666	IRN/18/2010	cattle	88.2	0	O	ME-SA	PanAsia-2	BAL-09
viba_359	Manisa/TUR/69		88.0	0	O	ME-SA		
viba_766	IRN/31/2009	cattle	87.7	0	O	ME-SA	PanAsia-2	FAR-09

Virus sample name:	ISA/Mempawah/BBR11/2022
Sender reference:	ISA/Mempawah/BBR11/2022
Location of origin:	Mempawah regency, West Kalimantan province
Country of origin:	Indonesia
Date of collection:	09/05/2022
Host species:	goat
Serotype:	O
Topotype:	ME-SA
Lineage:	Ind-2001
Sublineage:	e
Sequence length:	633
Ambiguities:	0
Material submitted for sequencing:	n/a
Harvest date of material:	n/a
Primers:	n/a
Received for sequencing:	n/a
Created:	01/08/2022
Last updated:	01/08/2022
VIBASys IDs: sample 51249, genome 51250, sequence viba_51251, sequencing info 51252	

Most Closely Related Sequences

sequence	virus name	Host	% Id.	# Ambig.	serotype	topotype	lineage	sublineage
viba_51291	ISA/HSU/A0522099-5/2022	goat	100.0	0	O	ME-SA	Ind-2001	e
viba_51287	ISA/Magetan/A04222620/2022	cattle	100.0	0	O	ME-SA	Ind-2001	e
viba_51223	ISA/Probolinggo/PVT/2022	cattle	100.0	0	O	ME-SA	Ind-2001	e
viba_51020	ISA/3/2022	cattle	100.0	0	O	ME-SA	Ind-2001	e
viba_50625	PVT-S234/ISA/2022	cattle	100.0	0	O	ME-SA	Ind-2001	e
viba_51211	ISA/Sidoarjo/PVT/2022	cattle	100.0	0	O	ME-SA	Ind-2001	e
viba_51016	ISA/1/2022	cattle	100.0	0	O	ME-SA	Ind-2001	e
viba_51279	ISA/Pemalang/A04222613/2022	cattle	100.0	0	O	ME-SA	Ind-2001	e
viba_51239	ISA/PangkalPinang/PVT/2022	cattle	100.0	0	O	ME-SA	Ind-2001	e
viba_51219	ISA/Babel/PVT-AN/2022	cattle	100.0	0	O	ME-SA	Ind-2001	e

Most Closely Related Prototype Sequences

see <http://www.wrlfmd.org/fmdv-genome/fmd-prototype-strains>

sequence	virus name	Host	% Id.	# Ambig.	serotype	topotype	lineage	sublineage
viba_30238	MUR/19/2016	cattle	95.3	0	O	ME-SA	Ind-2001	e
viba_293	BHU/3/2009	cattle	91.9	0	O	ME-SA	Ind-2001	d
viba_541	OMN/7/2001	bovine	91.5	0	O	ME-SA	Ind-2001	b
viba_705	KUW/3/97	bovine	90.5	0	O	ME-SA	Ind-2001	a
viba_397	UAE/4/2008	gazelle	89.3	0	O	ME-SA	Ind-2001	c
viba_650	IRN/8/2005	ovine	88.3	0	O	ME-SA	PanAsia-2	
viba_285	UKG/35/2001	porcine	88.2	0	O	ME-SA	PanAsia	
viba_359	Manisa/TUR/69		87.8	0	O	ME-SA		
viba_666	IRN/18/2010	cattle	87.7	0	O	ME-SA	PanAsia-2	BAL-09
viba_719	IRN/88/2009		87.6	0	O	ME-SA	PanAsia-2	ANT-10

Virus sample name:	ISA/KWB/A0522106/2022
Sender reference:	ISA/KWB/A0522106/2022
Location of origin:	KWB
Country of origin:	Indonesia
Date of collection:	10/05/2022
Host species:	cattle
Serotype:	O
Topotype:	ME-SA
Lineage:	Ind-2001
Sublineage:	e
Sequence length:	633
Ambiguities:	0
Material submitted for sequencing:	n/a
Harvest date of material:	n/a
Primers:	n/a
Received for sequencing:	n/a
Created:	01/08/2022
Last updated:	01/08/2022
VIBASys IDs: sample 51253, genome 51254, sequence viba_51255, sequencing info 51256	

Most Closely Related Sequences

sequence	virus name	Host	% Id.	# Ambig.	serotype	topotype	lineage	sublineage
viba_51291	ISA/HSU/A0522099-5/2022	goat	100.0	0	O	ME-SA	Ind-2001	e
viba_51287	ISA/Magetan/A04222620/2022	cattle	100.0	0	O	ME-SA	Ind-2001	e
viba_51223	ISA/Probolinggo/PVT/2022	cattle	100.0	0	O	ME-SA	Ind-2001	e
viba_51020	ISA/3/2022	cattle	100.0	0	O	ME-SA	Ind-2001	e
viba_50625	PVT-S234/ISA/2022	cattle	100.0	0	O	ME-SA	Ind-2001	e
viba_51211	ISA/Sidoarjo/PVT/2022	cattle	100.0	0	O	ME-SA	Ind-2001	e
viba_51016	ISA/1/2022	cattle	100.0	0	O	ME-SA	Ind-2001	e
viba_51279	ISA/Pemalang/A04222613/2022	cattle	100.0	0	O	ME-SA	Ind-2001	e
viba_51239	ISA/PangkalPinang/PVT/2022	cattle	100.0	0	O	ME-SA	Ind-2001	e
viba_51219	ISA/Babel/PVT-AN/2022	cattle	100.0	0	O	ME-SA	Ind-2001	e

Most Closely Related Prototype Sequences

see <http://www.wrlfmd.org/fmdv-genome/fmd-prototype-strains>

sequence	virus name	Host	% Id.	# Ambig.	serotype	topotype	lineage	sublineage
viba_30238	MUR/19/2016	cattle	95.3	0	O	ME-SA	Ind-2001	e
viba_293	BHU/3/2009	cattle	91.9	0	O	ME-SA	Ind-2001	d
viba_541	OMN/7/2001	bovine	91.5	0	O	ME-SA	Ind-2001	b
viba_705	KUW/3/97	bovine	90.5	0	O	ME-SA	Ind-2001	a
viba_397	UAE/4/2008	gazelle	89.3	0	O	ME-SA	Ind-2001	c
viba_650	IRN/8/2005	ovine	88.3	0	O	ME-SA	PanAsia-2	
viba_285	UKG/35/2001	porcine	88.2	0	O	ME-SA	PanAsia	
viba_359	Manisa/TUR/69		87.8	0	O	ME-SA		
viba_666	IRN/18/2010	cattle	87.7	0	O	ME-SA	PanAsia-2	BAL-09
viba_719	IRN/88/2009		87.6	0	O	ME-SA	PanAsia-2	ANT-10

Virus sample name:	ISA/Banjarnegara/A04222582/2022
Sender reference:	ISA/Banjarnegara/A04222582/2022
Location of origin:	Banjarnegara regency, Central Java province
Country of origin:	Indonesia
Date of collection:	10/05/2022
Host species:	cattle
Serotype:	O
Topotype:	ME-SA
Lineage:	Ind-2001
Sublineage:	e
Sequence length:	633
Ambiguities:	0
Material submitted for sequencing:	n/a
Harvest date of material:	n/a
Primers:	n/a
Received for sequencing:	n/a
Created:	01/08/2022
Last updated:	01/08/2022
VIBASys IDs: sample 51257, genome 51258, sequence viba_51259, sequencing info 51260	

Most Closely Related Sequences

sequence	virus name	Host	% Id.	# Ambig.	serotype	topotype	lineage	sublineage
viba_51275	ISA/Purbalingga/A04222607/2022	cattle	100.0	0	O	ME-SA	Ind-2001	e
viba_51291	ISA/HSU/A0522099-5/2022	goat	99.8	0	O	ME-SA	Ind-2001	e
viba_51287	ISA/Magetan/A04222620/2022	cattle	99.8	0	O	ME-SA	Ind-2001	e
viba_51223	ISA/Probolinggo/PVT/2022	cattle	99.8	0	O	ME-SA	Ind-2001	e
viba_51020	ISA/3/2022	cattle	99.8	0	O	ME-SA	Ind-2001	e
viba_50625	PVT-S234/ISA/2022	cattle	99.8	0	O	ME-SA	Ind-2001	e
viba_51211	ISA/Sidoarjo/PVT/2022	cattle	99.8	0	O	ME-SA	Ind-2001	e
viba_51016	ISA/1/2022	cattle	99.8	0	O	ME-SA	Ind-2001	e
viba_51279	ISA/Pemalang/A04222613/2022	cattle	99.8	0	O	ME-SA	Ind-2001	e
viba_51239	ISA/PangkalPinang/PVT/2022	cattle	99.8	0	O	ME-SA	Ind-2001	e

Most Closely Related Prototype Sequences

see <http://www.wrlfmd.org/fmdv-genome/fmd-prototype-strains>

sequence	virus name	Host	% Id.	# Ambig.	serotype	topotype	lineage	sublineage
viba_30238	MUR/19/2016	cattle	95.1	0	O	ME-SA	Ind-2001	e
viba_293	BHU/3/2009	cattle	91.9	0	O	ME-SA	Ind-2001	d
viba_541	OMN/7/2001	bovine	91.5	0	O	ME-SA	Ind-2001	b
viba_705	KUW/3/97	bovine	90.5	0	O	ME-SA	Ind-2001	a
viba_397	UAE/4/2008	gazelle	89.3	0	O	ME-SA	Ind-2001	c
viba_650	IRN/8/2005	ovine	88.3	0	O	ME-SA	PanAsia-2	
viba_285	UKG/35/2001	porcine	88.2	0	O	ME-SA	PanAsia	
viba_359	Manisa/TUR/69		87.8	0	O	ME-SA		
viba_666	IRN/18/2010	cattle	87.7	0	O	ME-SA	PanAsia-2	BAL-09
viba_719	IRN/88/2009		87.6	0	O	ME-SA	PanAsia-2	ANT-10

Virus sample name:	ISA/Klaten/A04222596/2022
Sender reference:	ISA/Klaten/A04222596/2022
Location of origin:	Klaten Regency, ?Central Java?province
Country of origin:	Indonesia
Date of collection:	11/05/2022
Host species:	cattle
Serotype:	O
Topotype:	ME-SA
Lineage:	Ind-2001
Sublineage:	e
Sequence length:	633
Ambiguities:	0
Material submitted for sequencing:	n/a
Harvest date of material:	n/a
Primers:	n/a
Received for sequencing:	n/a
Created:	01/08/2022
Last updated:	01/08/2022
VIBASys IDs: sample 51261, genome 51262, sequence viba_51263, sequencing info 51264	

Most Closely Related Sequences

sequence	virus name	Host	% Id.	# Ambig.	serotype	topotype	lineage	sublineage
viba_51231	ISA/Boyolali/A04222562/2022	cattle	100.0	0	O	ME-SA	Ind-2001	e
viba_51247	ISA/LTI/A06220466/2022	cattle	99.8	0	O	ME-SA	Ind-2001	e
viba_51283	ISA/Semarang/A04222614/2022	cattle	99.8	0	O	ME-SA	Ind-2001	e
viba_51291	ISA/HSU/A0522099-5/2022	goat	99.5	0	O	ME-SA	Ind-2001	e
viba_51287	ISA/Magetan/A04222620/2022	cattle	99.5	0	O	ME-SA	Ind-2001	e
viba_51223	ISA/Probolinggo/PVT/2022	cattle	99.5	0	O	ME-SA	Ind-2001	e
viba_51020	ISA/3/2022	cattle	99.5	0	O	ME-SA	Ind-2001	e
viba_50625	PVT-S234/ISA/2022	cattle	99.5	0	O	ME-SA	Ind-2001	e
viba_51211	ISA/Sidoarjo/PVT/2022	cattle	99.5	0	O	ME-SA	Ind-2001	e
viba_51016	ISA/1/2022	cattle	99.5	0	O	ME-SA	Ind-2001	e

Most Closely Related Prototype Sequences

see <http://www.wrlfmd.org/fmdv-genome/fmd-prototype-strains>

sequence	virus name	Host	% Id.	# Ambig.	serotype	topotype	lineage	sublineage
viba_30238	MUR/19/2016	cattle	95.4	0	O	ME-SA	Ind-2001	e
viba_293	BHU/3/2009	cattle	91.9	0	O	ME-SA	Ind-2001	d
viba_541	OMN/7/2001	bovine	91.5	0	O	ME-SA	Ind-2001	b
viba_705	KUW/3/97	bovine	90.5	0	O	ME-SA	Ind-2001	a
viba_397	UAE/4/2008	gazelle	89.3	0	O	ME-SA	Ind-2001	c
viba_650	IRN/8/2005	ovine	88.3	0	O	ME-SA	PanAsia-2	
viba_285	UKG/35/2001	porcine	88.2	0	O	ME-SA	PanAsia	
viba_666	IRN/18/2010	cattle	88.0	0	O	ME-SA	PanAsia-2	BAL-09
viba_359	Manisa/TUR/69		87.8	0	O	ME-SA		
viba_766	IRN/31/2009	cattle	87.5	0	O	ME-SA	PanAsia-2	FAR-09

Virus sample name:	ISA/Jombang/PVTW-J11/2022
Sender reference:	ISA/Jombang/PVTW-J11/2022
Location of origin:	Jombang regency, East Java province
Country of origin:	Indonesia
Date of collection:	11/05/2022
Host species:	goat
Serotype:	O
Topotype:	ME-SA
Lineage:	Ind-2001
Sublineage:	e
Sequence length:	633
Ambiguities:	0
Material submitted for sequencing:	n/a
Harvest date of material:	n/a
Primers:	n/a
Received for sequencing:	n/a
Created:	01/08/2022
Last updated:	01/08/2022
VIBASys IDs: sample 51265, genome 51266, sequence viba_51267, sequencing info 51268	

Most Closely Related Sequences

sequence	virus name	Host	% Id.	# Ambig.	serotype	topotype	lineage	sublineage
viba_51291	ISA/HSU/A0522099-5/2022	goat	100.0	0	O	ME-SA	Ind-2001	e
viba_51287	ISA/Magetan/A04222620/2022	cattle	100.0	0	O	ME-SA	Ind-2001	e
viba_51223	ISA/Probolinggo/PVT/2022	cattle	100.0	0	O	ME-SA	Ind-2001	e
viba_51020	ISA/3/2022	cattle	100.0	0	O	ME-SA	Ind-2001	e
viba_50625	PVT-S234/ISA/2022	cattle	100.0	0	O	ME-SA	Ind-2001	e
viba_51211	ISA/Sidoarjo/PVT/2022	cattle	100.0	0	O	ME-SA	Ind-2001	e
viba_51016	ISA/1/2022	cattle	100.0	0	O	ME-SA	Ind-2001	e
viba_51279	ISA/Pemalang/A04222613/2022	cattle	100.0	0	O	ME-SA	Ind-2001	e
viba_51239	ISA/PangkalPinang/PVT/2022	cattle	100.0	0	O	ME-SA	Ind-2001	e
viba_51219	ISA/Babel/PVT-AN/2022	cattle	100.0	0	O	ME-SA	Ind-2001	e

Most Closely Related Prototype Sequences

see <http://www.wrlfmd.org/fmdv-genome/fmd-prototype-strains>

sequence	virus name	Host	% Id.	# Ambig.	serotype	topotype	lineage	sublineage
viba_30238	MUR/19/2016	cattle	95.3	0	O	ME-SA	Ind-2001	e
viba_293	BHU/3/2009	cattle	91.9	0	O	ME-SA	Ind-2001	d
viba_541	OMN/7/2001	bovine	91.5	0	O	ME-SA	Ind-2001	b
viba_705	KUW/3/97	bovine	90.5	0	O	ME-SA	Ind-2001	a
viba_397	UAE/4/2008	gazelle	89.3	0	O	ME-SA	Ind-2001	c
viba_650	IRN/8/2005	ovine	88.3	0	O	ME-SA	PanAsia-2	
viba_285	UKG/35/2001	porcine	88.2	0	O	ME-SA	PanAsia	
viba_359	Manisa/TUR/69		87.8	0	O	ME-SA		
viba_666	IRN/18/2010	cattle	87.7	0	O	ME-SA	PanAsia-2	BAL-09
viba_719	IRN/88/2009		87.6	0	O	ME-SA	PanAsia-2	ANT-10

Virus sample name:	ISA/Gresik/PVT-KBMS/2022
Sender reference:	ISA/Gresik/PVT-KBMS/2022
Location of origin:	Gresik regency, East Java province
Country of origin:	Indonesia
Date of collection:	12/05/2022
Host species:	cattle
Serotype:	O
Topotype:	ME-SA
Lineage:	Ind-2001
Sublineage:	e
Sequence length:	633
Ambiguities:	0
Material submitted for sequencing:	n/a
Harvest date of material:	n/a
Primers:	n/a
Received for sequencing:	n/a
Created:	01/08/2022
Last updated:	01/08/2022
VIBASys IDs: sample 51269, genome 51270, sequence viba_51271, sequencing info 51272	

Most Closely Related Sequences

sequence	virus name	Host	% Id.	# Ambig.	serotype	topotype	lineage	sublineage
viba_51291	ISA/HSU/A0522099-5/2022	goat	100.0	0	O	ME-SA	Ind-2001	e
viba_51287	ISA/Magetan/A04222620/2022	cattle	100.0	0	O	ME-SA	Ind-2001	e
viba_51223	ISA/Probolinggo/PVT/2022	cattle	100.0	0	O	ME-SA	Ind-2001	e
viba_51020	ISA/3/2022	cattle	100.0	0	O	ME-SA	Ind-2001	e
viba_50625	PVT-S234/ISA/2022	cattle	100.0	0	O	ME-SA	Ind-2001	e
viba_51211	ISA/Sidoarjo/PVT/2022	cattle	100.0	0	O	ME-SA	Ind-2001	e
viba_51016	ISA/1/2022	cattle	100.0	0	O	ME-SA	Ind-2001	e
viba_51279	ISA/Pemalang/A04222613/2022	cattle	100.0	0	O	ME-SA	Ind-2001	e
viba_51239	ISA/PangkalPinang/PVT/2022	cattle	100.0	0	O	ME-SA	Ind-2001	e
viba_51219	ISA/Babel/PVT-AN/2022	cattle	100.0	0	O	ME-SA	Ind-2001	e

Most Closely Related Prototype Sequences

see <http://www.wrlfmd.org/fmdv-genome/fmd-prototype-strains>

sequence	virus name	Host	% Id.	# Ambig.	serotype	topotype	lineage	sublineage
viba_30238	MUR/19/2016	cattle	95.3	0	O	ME-SA	Ind-2001	e
viba_293	BHU/3/2009	cattle	91.9	0	O	ME-SA	Ind-2001	d
viba_541	OMN/7/2001	bovine	91.5	0	O	ME-SA	Ind-2001	b
viba_705	KUW/3/97	bovine	90.5	0	O	ME-SA	Ind-2001	a
viba_397	UAE/4/2008	gazelle	89.3	0	O	ME-SA	Ind-2001	c
viba_650	IRN/8/2005	ovine	88.3	0	O	ME-SA	PanAsia-2	
viba_285	UKG/35/2001	porcine	88.2	0	O	ME-SA	PanAsia	
viba_359	Manisa/TUR/69		87.8	0	O	ME-SA		
viba_666	IRN/18/2010	cattle	87.7	0	O	ME-SA	PanAsia-2	BAL-09
viba_719	IRN/88/2009		87.6	0	O	ME-SA	PanAsia-2	ANT-10

Virus sample name:	ISA/Purbalingga/A04222607/2022
Sender reference:	ISA/Purbalingga/A04222607/2022
Location of origin:	Purbalingga, ?Central Java?province
Country of origin:	Indonesia
Date of collection:	12/05/2022
Host species:	cattle
Serotype:	O
Topotype:	ME-SA
Lineage:	Ind-2001
Sublineage:	e
Sequence length:	633
Ambiguities:	0
Material submitted for sequencing:	n/a
Harvest date of material:	n/a
Primers:	n/a
Received for sequencing:	n/a
Created:	01/08/2022
Last updated:	01/08/2022
VIBASys IDs: sample 51273, genome 51274, sequence viba_51275, sequencing info 51276	

Most Closely Related Sequences

sequence	virus name	Host	% Id.	# Ambig.	serotype	topotype	lineage	sublineage
viba_51259	ISA/Banjarnegara/A04222582/2022	cattle	100.0	0	O	ME-SA	Ind-2001	e
viba_51291	ISA/HSU/A0522099-5/2022	goat	99.8	0	O	ME-SA	Ind-2001	e
viba_51287	ISA/Magetan/A04222620/2022	cattle	99.8	0	O	ME-SA	Ind-2001	e
viba_51223	ISA/Probolinggo/PVT/2022	cattle	99.8	0	O	ME-SA	Ind-2001	e
viba_51020	ISA/3/2022	cattle	99.8	0	O	ME-SA	Ind-2001	e
viba_50625	PVT-S234/ISA/2022	cattle	99.8	0	O	ME-SA	Ind-2001	e
viba_51211	ISA/Sidoarjo/PVT/2022	cattle	99.8	0	O	ME-SA	Ind-2001	e
viba_51016	ISA/1/2022	cattle	99.8	0	O	ME-SA	Ind-2001	e
viba_51279	ISA/Pemalang/A04222613/2022	cattle	99.8	0	O	ME-SA	Ind-2001	e
viba_51239	ISA/PangkalPinang/PVT/2022	cattle	99.8	0	O	ME-SA	Ind-2001	e

Most Closely Related Prototype Sequences

see <http://www.wrlfmd.org/fmdv-genome/fmd-prototype-strains>

sequence	virus name	Host	% Id.	# Ambig.	serotype	topotype	lineage	sublineage
viba_30238	MUR/19/2016	cattle	95.1	0	O	ME-SA	Ind-2001	e
viba_293	BHU/3/2009	cattle	91.9	0	O	ME-SA	Ind-2001	d
viba_541	OMN/7/2001	bovine	91.5	0	O	ME-SA	Ind-2001	b
viba_705	KUW/3/97	bovine	90.5	0	O	ME-SA	Ind-2001	a
viba_397	UAE/4/2008	gazelle	89.3	0	O	ME-SA	Ind-2001	c
viba_650	IRN/8/2005	ovine	88.3	0	O	ME-SA	PanAsia-2	
viba_285	UKG/35/2001	porcine	88.2	0	O	ME-SA	PanAsia	
viba_359	Manisa/TUR/69		87.8	0	O	ME-SA		
viba_666	IRN/18/2010	cattle	87.7	0	O	ME-SA	PanAsia-2	BAL-09
viba_719	IRN/88/2009		87.6	0	O	ME-SA	PanAsia-2	ANT-10

Virus sample name:	ISA/Pemalang/A04222613/2022
Sender reference:	ISA/Pemalang/A04222613/2022
Location of origin:	Pemalang Regency, ?Central Java?province
Country of origin:	Indonesia
Date of collection:	12/05/2022
Host species:	cattle
Serotype:	O
Topotype:	ME-SA
Lineage:	Ind-2001
Sublineage:	e
Sequence length:	633
Ambiguities:	0
Material submitted for sequencing:	n/a
Harvest date of material:	n/a
Primers:	n/a
Received for sequencing:	n/a
Created:	01/08/2022
Last updated:	01/08/2022
VIBASys IDs: sample 51277, genome 51278, sequence viba_51279, sequencing info 51280	

Most Closely Related Sequences

sequence	virus name	Host	% Id.	# Ambig.	serotype	topotype	lineage	sublineage
viba_51291	ISA/HSU/A0522099-5/2022	goat	100.0	0	O	ME-SA	Ind-2001	e
viba_51287	ISA/Magetan/A04222620/2022	cattle	100.0	0	O	ME-SA	Ind-2001	e
viba_51223	ISA/Probolinggo/PVT/2022	cattle	100.0	0	O	ME-SA	Ind-2001	e
viba_51020	ISA/3/2022	cattle	100.0	0	O	ME-SA	Ind-2001	e
viba_50625	PVT-S234/ISA/2022	cattle	100.0	0	O	ME-SA	Ind-2001	e
viba_51211	ISA/Sidoarjo/PVT/2022	cattle	100.0	0	O	ME-SA	Ind-2001	e
viba_51016	ISA/1/2022	cattle	100.0	0	O	ME-SA	Ind-2001	e
viba_51239	ISA/PangkalPinang/PVT/2022	cattle	100.0	0	O	ME-SA	Ind-2001	e
viba_51219	ISA/Babel/PVT-AN/2022	cattle	100.0	0	O	ME-SA	Ind-2001	e
viba_51235	ISA/Pasuruan/A04222583/2022	cattle	100.0	0	O	ME-SA	Ind-2001	e

Most Closely Related Prototype Sequences

see <http://www.wrlfmd.org/fmdv-genome/fmd-prototype-strains>

sequence	virus name	Host	% Id.	# Ambig.	serotype	topotype	lineage	sublineage
viba_30238	MUR/19/2016	cattle	95.3	0	O	ME-SA	Ind-2001	e
viba_293	BHU/3/2009	cattle	91.9	0	O	ME-SA	Ind-2001	d
viba_541	OMN/7/2001	bovine	91.5	0	O	ME-SA	Ind-2001	b
viba_705	KUW/3/97	bovine	90.5	0	O	ME-SA	Ind-2001	a
viba_397	UAE/4/2008	gazelle	89.3	0	O	ME-SA	Ind-2001	c
viba_650	IRN/8/2005	ovine	88.3	0	O	ME-SA	PanAsia-2	
viba_285	UKG/35/2001	porcine	88.2	0	O	ME-SA	PanAsia	
viba_359	Manisa/TUR/69		87.8	0	O	ME-SA		
viba_666	IRN/18/2010	cattle	87.7	0	O	ME-SA	PanAsia-2	BAL-09
viba_719	IRN/88/2009		87.6	0	O	ME-SA	PanAsia-2	ANT-10

Virus sample name:	ISA/Semarang/A04222614/2022
Sender reference:	ISA/Semarang/A04222614/2022
Location of origin:	Semarang, ?Central Java? province
Country of origin:	Indonesia
Date of collection:	13/05/2022
Host species:	cattle
Serotype:	O
Topotype:	ME-SA
Lineage:	Ind-2001
Sublineage:	e
Sequence length:	633
Ambiguities:	0
Material submitted for sequencing:	n/a
Harvest date of material:	n/a
Primers:	n/a
Received for sequencing:	n/a
Created:	01/08/2022
Last updated:	01/08/2022
VIBASys IDs: sample 51281, genome 51282, sequence viba_51283, sequencing info 51284	

Most Closely Related Sequences

sequence	virus name	Host	% Id.	# Ambig.	serotype	topotype	lineage	sublineage
viba_51263	ISA/Klaten/A04222596/2022	cattle	99.8	0	O	ME-SA	Ind-2001	e
viba_51231	ISA/Boyolali/A04222562/2022	cattle	99.8	0	O	ME-SA	Ind-2001	e
viba_51247	ISA/LTI/A06220466/2022	cattle	99.7	0	O	ME-SA	Ind-2001	e
viba_51291	ISA/HSU/A0522099-5/2022	goat	99.4	0	O	ME-SA	Ind-2001	e
viba_51287	ISA/Magetan/A04222620/2022	cattle	99.4	0	O	ME-SA	Ind-2001	e
viba_51223	ISA/Probolinggo/PVT/2022	cattle	99.4	0	O	ME-SA	Ind-2001	e
viba_51020	ISA/3/2022	cattle	99.4	0	O	ME-SA	Ind-2001	e
viba_50625	PVT-S234/ISA/2022	cattle	99.4	0	O	ME-SA	Ind-2001	e
viba_51211	ISA/Sidoarjo/PVT/2022	cattle	99.4	0	O	ME-SA	Ind-2001	e
viba_51016	ISA/1/2022	cattle	99.4	0	O	ME-SA	Ind-2001	e

Most Closely Related Prototype Sequences

see <http://www.wrlfmd.org/fmdv-genome/fmd-prototype-strains>

sequence	virus name	Host	% Id.	# Ambig.	serotype	topotype	lineage	sublineage
viba_30238	MUR/19/2016	cattle	95.3	0	O	ME-SA	Ind-2001	e
viba_293	BHU/3/2009	cattle	92.1	0	O	ME-SA	Ind-2001	d
viba_541	OMN/7/2001	bovine	91.6	0	O	ME-SA	Ind-2001	b
viba_705	KUW/3/97	bovine	90.7	0	O	ME-SA	Ind-2001	a
viba_397	UAE/4/2008	gazelle	89.4	0	O	ME-SA	Ind-2001	c
viba_650	IRN/8/2005	ovine	88.5	0	O	ME-SA	PanAsia-2	
viba_285	UKG/35/2001	porcine	88.3	0	O	ME-SA	PanAsia	
viba_666	IRN/18/2010	cattle	88.2	0	O	ME-SA	PanAsia-2	BAL-09
viba_359	Manisa/TUR/69		88.0	0	O	ME-SA		
viba_766	IRN/31/2009	cattle	87.7	0	O	ME-SA	PanAsia-2	FAR-09

Virus sample name:	ISA/Magetan/A04222620/2022
Sender reference:	ISA/Magetan/A04222620/2022
Location of origin:	Magetan regency, East Java province
Country of origin:	Indonesia
Date of collection:	13/05/2022
Host species:	cattle
Serotype:	O
Topotype:	ME-SA
Lineage:	Ind-2001
Sublineage:	e
Sequence length:	633
Ambiguities:	0
Material submitted for sequencing:	n/a
Harvest date of material:	n/a
Primers:	n/a
Received for sequencing:	n/a
Created:	01/08/2022
Last updated:	01/08/2022
VIBASys IDs: sample 51285, genome 51286, sequence viba_51287, sequencing info 51288	

Most Closely Related Sequences

sequence	virus name	Host	% Id.	# Ambig.	serotype	topotype	lineage	sublineage
viba_51291	ISA/HSU/A0522099-5/2022	goat	100.0	0	O	ME-SA	Ind-2001	e
viba_51223	ISA/Probolinggo/PVT/2022	cattle	100.0	0	O	ME-SA	Ind-2001	e
viba_51020	ISA/3/2022	cattle	100.0	0	O	ME-SA	Ind-2001	e
viba_50625	PVT-S234/ISA/2022	cattle	100.0	0	O	ME-SA	Ind-2001	e
viba_51211	ISA/Sidoarjo/PVT/2022	cattle	100.0	0	O	ME-SA	Ind-2001	e
viba_51016	ISA/1/2022	cattle	100.0	0	O	ME-SA	Ind-2001	e
viba_51279	ISA/Pemalang/A04222613/2022	cattle	100.0	0	O	ME-SA	Ind-2001	e
viba_51239	ISA/PangkalPinang/PVT/2022	cattle	100.0	0	O	ME-SA	Ind-2001	e
viba_51219	ISA/Babel/PVT-AN/2022	cattle	100.0	0	O	ME-SA	Ind-2001	e
viba_51235	ISA/Pasuruan/A04222583/2022	cattle	100.0	0	O	ME-SA	Ind-2001	e

Most Closely Related Prototype Sequences

see <http://www.wrlfmd.org/fmdv-genome/fmd-prototype-strains>

sequence	virus name	Host	% Id.	# Ambig.	serotype	topotype	lineage	sublineage
viba_30238	MUR/19/2016	cattle	95.3	0	O	ME-SA	Ind-2001	e
viba_293	BHU/3/2009	cattle	91.9	0	O	ME-SA	Ind-2001	d
viba_541	OMN/7/2001	bovine	91.5	0	O	ME-SA	Ind-2001	b
viba_705	KUW/3/97	bovine	90.5	0	O	ME-SA	Ind-2001	a
viba_397	UAE/4/2008	gazelle	89.3	0	O	ME-SA	Ind-2001	c
viba_650	IRN/8/2005	ovine	88.3	0	O	ME-SA	PanAsia-2	
viba_285	UKG/35/2001	porcine	88.2	0	O	ME-SA	PanAsia	
viba_359	Manisa/TUR/69		87.8	0	O	ME-SA		
viba_666	IRN/18/2010	cattle	87.7	0	O	ME-SA	PanAsia-2	BAL-09
viba_719	IRN/88/2009		87.6	0	O	ME-SA	PanAsia-2	ANT-10

Virus sample name:	ISA/HSU/A0522099-5/2022
Sender reference:	ISA/HSU/A0522099-5/2022
Location of origin:	HSU
Country of origin:	Indonesia
Date of collection:	15/05/2022
Host species:	goat
Serotype:	O
Topotype:	ME-SA
Lineage:	Ind-2001
Sublineage:	e
Sequence length:	633
Ambiguities:	0
Material submitted for sequencing:	n/a
Harvest date of material:	n/a
Primers:	n/a
Received for sequencing:	n/a
Created:	01/08/2022
Last updated:	01/08/2022
VIBASys IDs: sample 51289, genome 51290, sequence viba_51291, sequencing info 51292	

Most Closely Related Sequences

sequence	virus name	Host	% Id.	# Ambig.	serotype	topotype	lineage	sublineage
viba_51287	ISA/Magetan/A04222620/2022	cattle	100.0	0	O	ME-SA	Ind-2001	e
viba_51223	ISA/Probolinggo/PVT/2022	cattle	100.0	0	O	ME-SA	Ind-2001	e
viba_51020	ISA/3/2022	cattle	100.0	0	O	ME-SA	Ind-2001	e
viba_50625	PVT-S234/ISA/2022	cattle	100.0	0	O	ME-SA	Ind-2001	e
viba_51211	ISA/Sidoarjo/PVT/2022	cattle	100.0	0	O	ME-SA	Ind-2001	e
viba_51016	ISA/1/2022	cattle	100.0	0	O	ME-SA	Ind-2001	e
viba_51279	ISA/Pemalang/A04222613/2022	cattle	100.0	0	O	ME-SA	Ind-2001	e
viba_51239	ISA/PangkalPinang/PVT/2022	cattle	100.0	0	O	ME-SA	Ind-2001	e
viba_51219	ISA/Babel/PVT-AN/2022	cattle	100.0	0	O	ME-SA	Ind-2001	e
viba_51235	ISA/Pasuruan/A04222583/2022	cattle	100.0	0	O	ME-SA	Ind-2001	e

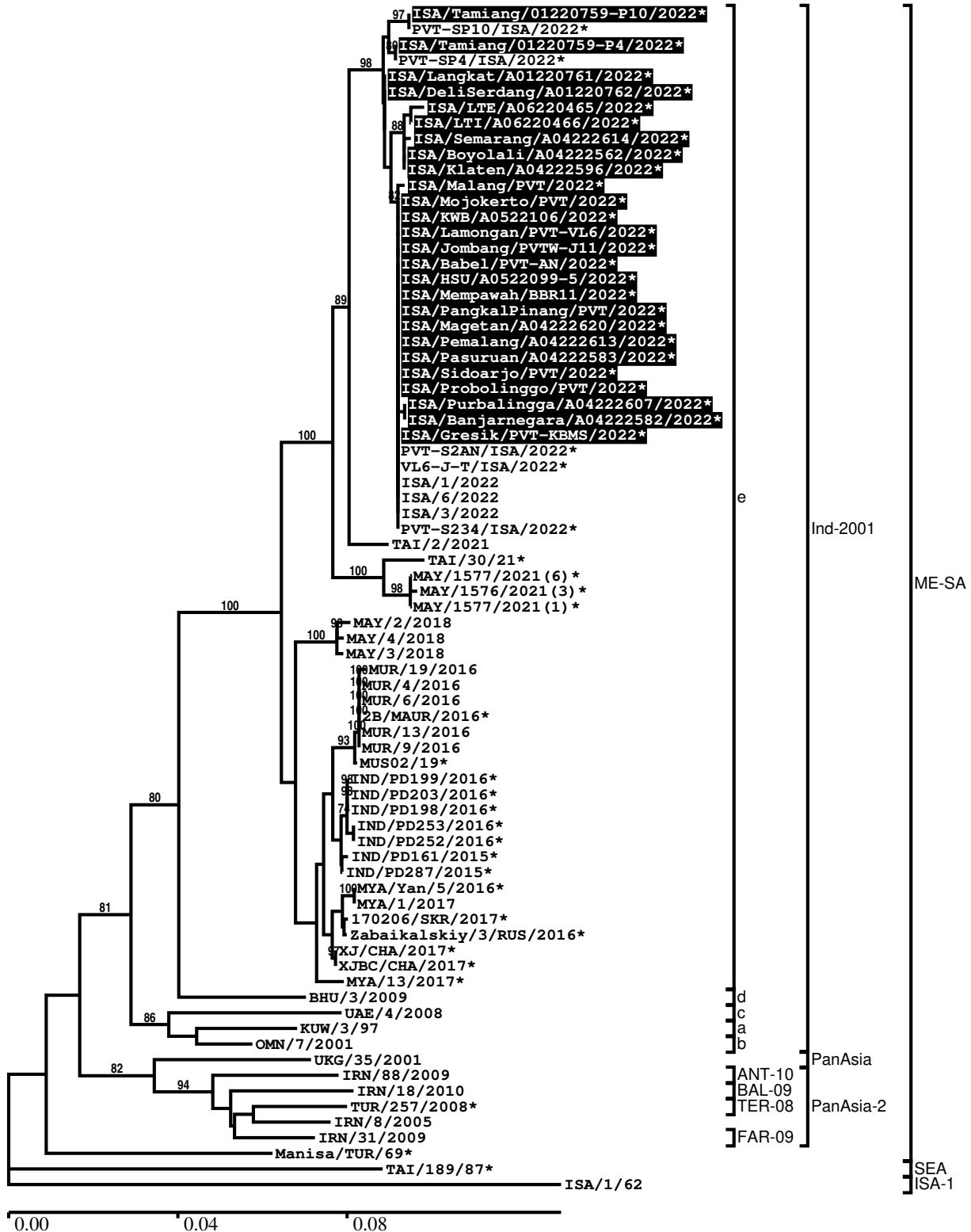
Most Closely Related Prototype Sequences

see <http://www.wrlfmd.org/fmdv-genome/fmd-prototype-strains>

sequence	virus name	Host	% Id.	# Ambig.	serotype	topotype	lineage	sublineage
viba_30238	MUR/19/2016	cattle	95.3	0	O	ME-SA	Ind-2001	e
viba_293	BHU/3/2009	cattle	91.9	0	O	ME-SA	Ind-2001	d
viba_541	OMN/7/2001	bovine	91.5	0	O	ME-SA	Ind-2001	b
viba_705	KUW/3/97	bovine	90.5	0	O	ME-SA	Ind-2001	a
viba_397	UAE/4/2008	gazelle	89.3	0	O	ME-SA	Ind-2001	c
viba_650	IRN/8/2005	ovine	88.3	0	O	ME-SA	PanAsia-2	
viba_285	UKG/35/2001	porcine	88.2	0	O	ME-SA	PanAsia	
viba_359	Manisa/TUR/69		87.8	0	O	ME-SA		
viba_666	IRN/18/2010	cattle	87.7	0	O	ME-SA	PanAsia-2	BAL-09
viba_719	IRN/88/2009		87.6	0	O	ME-SA	PanAsia-2	ANT-10

Report on FMDV O in Indonesia in 2022

Batch: WRLMEG/2022/00025



*, not a WRLFMD Reference Number

Analysis Parameters

VP1 subsequence extractor:	vp1_O
Query sequence set:	WRLMEG/2022/00025-Indonesia-O (26 sequences)
Sequence database set:	allseqs_O (5691 sequences)
Prototype sequence set:	!prototypes_O (49 sequences)
Number of related sequences reported:	10
Minimal VP1 subsequence match length	600
Sequence alignment method:	muscle (default parameters)
Sequence alignment length:	636
Phylogeny reconstruction method:	fdnadist, fneighbor
Number of bootstrap samples:	1000
Random seed for bootstrapping:	1
Displaying bootstrap values above:	70.0%
Number of sequences in tree capped at:	100
Number of prototype sequences in tree:	12
VIBASys version:	reflabs-1.1.2

Sequences in the Phylogenetic Tree

All sequences in the tree are in taxonomic group FMDV/O

label	accession	host(s)	lab	country	taxonomic information
ISA/Tamiang/01220759-P10/2022*	ON783874	cattle	DICWY	Indonesia	ME-SA/Ind-2001/e
PVT-SP10/ISA/2022*	n/a	cattle	Pusvetma	Indonesia	ME-SA/Ind-2001/e
ISA/Tamiang/01220759-P4/2022*	ON783873	cattle	DICWY	Indonesia	ME-SA/Ind-2001/e
PVT-SP4/ISA/2022*	n/a	cattle	Pusvetma	Indonesia	ME-SA/Ind-2001/e
ISA/Langkat/A01220761/2022*	ON854934	cattle	DICWY	Indonesia	ME-SA/Ind-2001/e
ISA/DeliSerdang/A01220762/2022*	ON854935	cattle	DICWY	Indonesia	ME-SA/Ind-2001/e
ISA/LTE/A06220465/2022*	ON854945	cattle	DICWY	Indonesia	ME-SA/Ind-2001/e
ISA/LTI/A06220466/2022*	ON854946	cattle	DICWY	Indonesia	ME-SA/Ind-2001/e
ISA/Semarang/A04222614/2022*	ON854955	cattle	DICWY	Indonesia	ME-SA/Ind-2001/e
ISA/Boyolali/A04222562/2022*	ON854942	cattle	DICWY	Indonesia	ME-SA/Ind-2001/e
ISA/Klaten/A04222596/2022*	ON854950	cattle	DICWY	Indonesia	ME-SA/Ind-2001/e
ISA/Malang/PVT/2022*	ON854941	cattle	DICWY	Indonesia	ME-SA/Ind-2001/e
ISA/Mojokerto/PVT/2022*	ON854938	cattle	DICWY	Indonesia	ME-SA/Ind-2001/e
ISA/KWB/A0522106/2022*	ON854948	cattle	DICWY	Indonesia	ME-SA/Ind-2001/e
ISA/Lamongan/PVT-VL6/2022*	ON854936	cattle	DICWY	Indonesia	ME-SA/Ind-2001/e
ISA/Jombang/PVTW-J11/2022*	ON854951	goat	DICWY	Indonesia	ME-SA/Ind-2001/e
ISA/Babel/PVT-AN/2022*	ON854939	cattle	DICWY	Indonesia	ME-SA/Ind-2001/e
ISA/HSU/A0522099-5/2022*	ON854957	goat	DICWY	Indonesia	ME-SA/Ind-2001/e
ISA/Mempawah/BBR11/2022*	ON854947	goat	DICWY	Indonesia	ME-SA/Ind-2001/e
ISA/PangkalPinang/PVT/2022*	ON854944	cattle	DICWY	Indonesia	ME-SA/Ind-2001/e
ISA/Magetan/A04222620/2022*	ON854956	cattle	DICWY	Indonesia	ME-SA/Ind-2001/e
ISA/Pemalang/A04222613/2022*	ON854954	cattle	DICWY	Indonesia	ME-SA/Ind-2001/e
ISA/Pasuruan/A04222583/2022*	ON854943	cattle	DICWY	Indonesia	ME-SA/Ind-2001/e
ISA/Sidoarjo/PVT/2022*	ON854937	cattle	DICWY	Indonesia	ME-SA/Ind-2001/e
ISA/Probolinggo/PVT/2022*	ON854940	cattle	DICWY	Indonesia	ME-SA/Ind-2001/e
ISA/Purbalingga/A04222607/2022*	ON854953	cattle	DICWY	Indonesia	ME-SA/Ind-2001/e
ISA/Banjarnegara/A04222582/2022*	ON854949	cattle	DICWY	Indonesia	ME-SA/Ind-2001/e
ISA/Gresik/PVT-KBMS/2022*	ON854952	cattle	DICWY	Indonesia	ME-SA/Ind-2001/e
PVT-S2AN/ISA/2022*	n/a	cattle	Pusvetma	Indonesia	ME-SA/Ind-2001/e
VL6-J-T/ISA/2022*	n/a	n/a	Pusvetma	Indonesia	ME-SA/Ind-2001/e
ISA/1/2022	n/a	cattle	WRLFMD	Indonesia	ME-SA/Ind-2001/e
ISA/6/2022	n/a	cattle	WRLFMD	Indonesia	ME-SA/Ind-2001/e
ISA/3/2022	n/a	cattle	WRLFMD	Indonesia	ME-SA/Ind-2001/e
PVT-S234/ISA/2022*	n/a	cattle	Pusvetma	Indonesia	ME-SA/Ind-2001/e
TAI/2/2021	n/a	cattle	WRLFMD	Thailand	ME-SA/Ind-2001/e
TAI/30/21*	n/a	bovine	TRRL	Thailand	ME-SA/Ind-2001/e

continued on next page

label	accession	host(s)	lab	country	taxonomic information
MAY/1577/2021(6)*	n/a	cattle	MNFMDL	Malaysia	ME-SA/Ind-2001/e
MAY/1576/2021(3)*	n/a	cattle	MNFMDL	Malaysia	ME-SA/Ind-2001/e
MAY/1577/2021(1)*	n/a	cattle	MNFMDL	Malaysia	ME-SA/Ind-2001/e
MAY/2/2018	n/a	cattle	WRLFMD	Malaysia	ME-SA/Ind-2001/e
MAY/4/2018	n/a	cattle	WRLFMD	Malaysia	ME-SA/Ind-2001/e
MAY/3/2018	n/a	cattle	WRLFMD	Malaysia	ME-SA/Ind-2001/e
MUR/19/2016	MG972510	cattle	WRLFMD	Mauritius	ME-SA/Ind-2001/e
MUR/4/2016	MG972496	cattle	WRLFMD	Mauritius	ME-SA/Ind-2001/e
MUR/6/2016	MG972498	cattle	WRLFMD	Mauritius	ME-SA/Ind-2001/e
2B/MAUR/2016*	n/a	bovine	ANSES	Mauritius	ME-SA/Ind-2001/e
MUR/13/2016	MG972504	cattle	WRLFMD	Mauritius	ME-SA/Ind-2001/e
MUR/9/2016	MG972501	cattle	WRLFMD	Mauritius	ME-SA/Ind-2001/e
MUS02/19*	n/a	bovine	BVI	Mauritius	ME-SA/Ind-2001/e
IND/PD199/2016*	MT909673	cattle	PD-FMD	India	ME-SA/Ind-2001/e
IND/PD203/2016*	MT909674	cattle	PD-FMD	India	ME-SA/Ind-2001/e
IND/PD198/2016*	MT909672	cattle	PD-FMD	India	ME-SA/Ind-2001/e
IND/PD253/2016*	MT909681	cattle	PD-FMD	India	ME-SA/Ind-2001/e
IND/PD252/2016*	MT909680	cattle	PD-FMD	India	ME-SA/Ind-2001/e
IND/PD161/2015*	MT909637	cattle	PD-FMD	India	ME-SA/Ind-2001/e
IND/PD287/2015*	MT909659	cattle	PD-FMD	India	ME-SA/Ind-2001/e
MYA/Yan/5/2016*	LC438823	cattle	NIAH-Japan	Myanmar	ME-SA/Ind-2001/e
MYA/1/2017	MG972517	cattle	WRLFMD	Myanmar	ME-SA/Ind-2001/e
170206/SKR/2017*	n/a	cattle	QIA	Republic of Korea (South Korea)	ME-SA/Ind-2001/e
Zabaikalskiy/3/RUS/2016*	MG972584	cattle	ARRIAH	Russia	ME-SA/Ind-2001/e
XJ/CHA/2017*	MF461724	cattle	LVRI	China	ME-SA/Ind-2001/e
XJBC/CHA/2017*	KY696708	n/a	LVRI	China	ME-SA/Ind-2001/e
MYA/13/2017*	MG972527	cattle	TRRL	Myanmar	ME-SA/Ind-2001/e
BHU/3/2009	KM921814	cattle	WRLFMD	Bhutan	ME-SA/Ind-2001/d
UAE/4/2008	KM921876	gazelle	WRLFMD	United Arab Emirates	ME-SA/Ind-2001/c
KUW/3/97	DQ164904	bovine	WRLFMD	Kuwait	ME-SA/Ind-2001/a
OMN/7/2001	DQ164941	bovine	WRLFMD	Oman	ME-SA/Ind-2001/b
UKG/35/2001	AJ539141	porcine	PIADC	United Kingdom	ME-SA/PanAsia
IRN/88/2009	KY091282	n/a	WRLFMD	Iran	ME-SA/PanAsia-2/ANT-10
IRN/18/2010	KY091283	cattle	WRLFMD	Iran	ME-SA/PanAsia-2/BAL-09
TUR/257/2008*	n/a	n/a	FMDI-Ankara	Turkey	ME-SA/PanAsia-2/TER-08
IRN/8/2005	KY091281	ovine	WRLFMD	Iran	ME-SA/PanAsia-2
IRN/31/2009	KY091284	cattle	WRLFMD	Iran	ME-SA/PanAsia-2/FAR-09
Manisa/TUR/69*	AY593823	n/a	PIADC	Turkey	ME-SA
TAI/189/87*	KY091288	bovine	TRRL	Thailand	SEA
ISA/1/62	AJ303500	n/a	WRLFMD	Indonesia	ISA-1

*, not a WRLFMD Reference Number

n/a, not available