

Report from the Molecular Epidemiology Section of the Experimental Epidemiology Group to the Head of the World Reference Laboratory for FMD (Non-QAU Form)

Serotype: O	Date: 21/08/2003
Virus isolate: NEP/1/2003	Reported by: N.J. Knowles
Material used: 10% epithelium susp.	Signed (file copy only):
Region sequenced: VP1	Seq. filename: NEP03-01
RT-PCR primer set: O1C-272F/NK61	
Topotype: ME-SA	No. of ambiguities: 5
Genotype/strain: Ind2001 (see comments)	Date seq. last updated: 16/07/2003
No. of nt determined / no. in gene: 598 / 639	Total no. of comparisons made: 1300

Comments: This virus probably belongs to this strain, but further phylogenetic analysis is required to confirm this.

Ten Most Closely Related Viruses

Pos.	Virus name	Filename	No. nt compared	No. nt matched	No. of ambiguities	% Identity	% Difference
1	IND/116/2001*	IND01-AC	598	571	5	95.48	4.52
2	IND/83/2001*	IND01-AA	598	570	5	95.32	4.68
3	O/BAR/1/2001	BAR01-01	598	570	5	95.32	4.68
4	IND/96/2001*	IND01-AB	598	569	5	95.15	4.85
5	O/OMN/7/2001	OMN01-07	598	569	5	95.15	4.85
6	O/BHU/7/2002	BHU02-07	596	567	7	95.13	4.87
7	O/OMN/4/2001	OMN01-04	598	568	5	94.98	5.02
8	O/SAU/3/2001	SAU01-03	596	566	7	94.97	5.03
9	O/UAE/6/2001	UAE01-06	598	566	5	94.65	5.35
10	O/PAT/3/2002	PAT02-03	311	293	3	94.21	5.79

Relationships to Reference Virus Strains

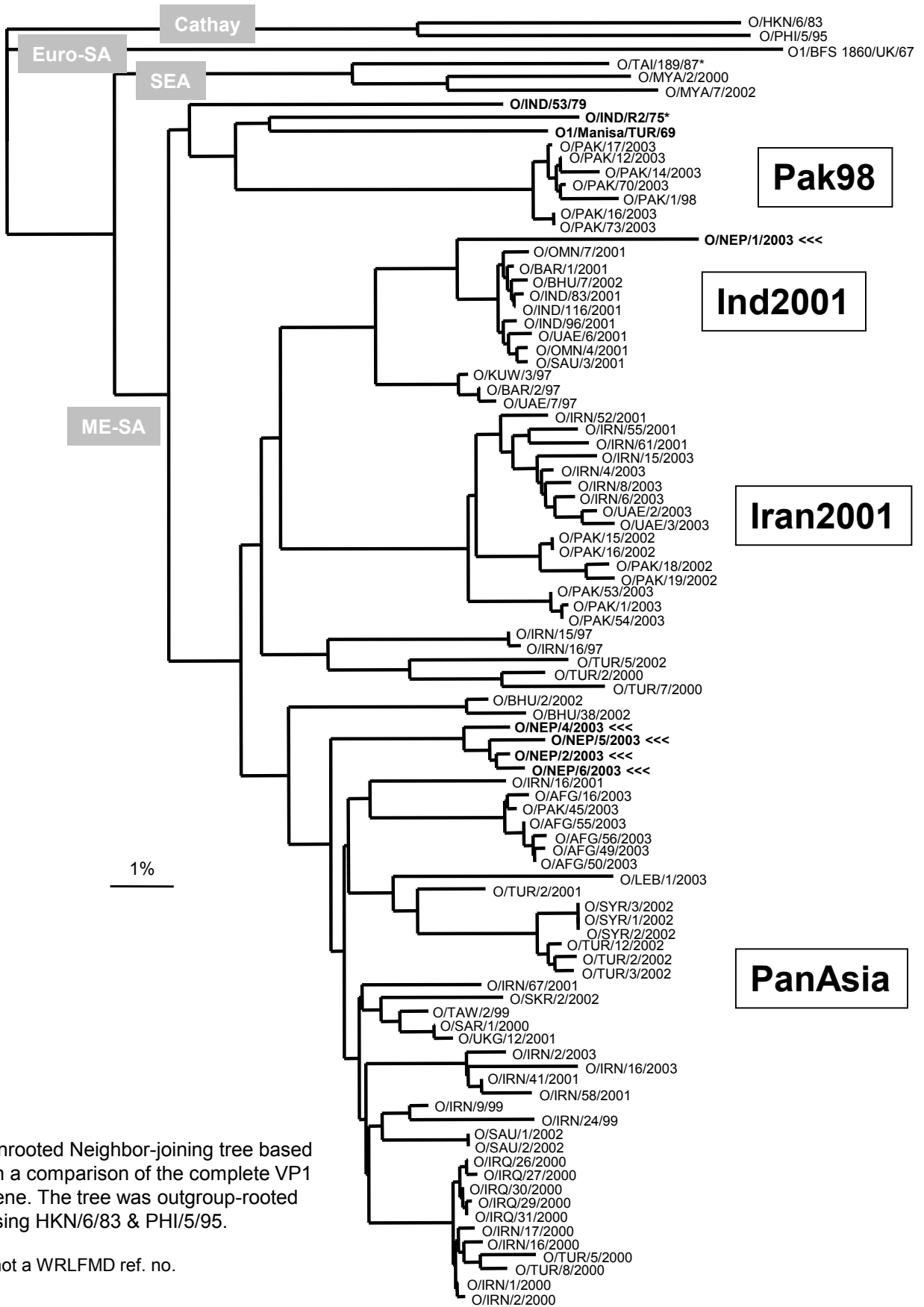
Pos.	Virus name	Filename	No. nt compared	No. nt matched	No. of ambiguities	% Identity	% Difference
1	O/TAW/2/99	TAW99-02	598	535	5	89.46	10.54
2	O1/Manisa/TUR/69	TUR69--E	598	520	5	86.96	13.04
3	O/IND/R2/75*	IND75--A	598	517	5	86.45	13.55
4	O/IND/53/79	IND79A53	598	513	5	85.79	14.21
5	O/MOR/1/91	MOR91-01	170	144	4	84.71	15.29
6	O/TAI/189/87*	TAI87--B	492	406	7	82.52	17.48
7	O/ISR/1/88	ISR88-01	155	127	7	81.94	18.06
8	O/HKN/6/83	HKN83-06	596	470	7	78.86	21.14
9	O1/BFS 1860/UK/67	UKG67--A	598	471	5	78.76	21.24
10	O/PHI/5/95	PHI95-05	475	367	11	77.26	22.74

nt, nucleotides

*, not a WRLFMD reference number

Report from the Molecular Epidemiology Section of the Experimental Epidemiology Group to the Head of the World Reference Laboratory for FMD (Non-QAU Form)

Serotype: O	Date: 21/08/2003						
Virus isolate: NEP/6/2003	Reported by: N.J. Knowles						
Material used: 10% epithelium susp.	Signed (file copy only):						
Region sequenced: VP1	Seq. filename: NEP03-06						
RT-PCR primer set: O1C-272F/NK61							
Topotype: ME-SA	No. of ambiguities: 0						
Genotype/strain: PanAsia	Date seq. last updated: 16/07/2003						
No. of nt determined / no. in gene: 639 / 639	Total no. of comparisons made: 1300						
Comments:							
Ten Most Closely Related Viruses							
Pos.	Virus name	Filename	No. nt compared	No. nt matched	No. of ambiguities	% Identity	% Difference
1	O/LEB/14/98	LEB98-14	614	588	3	95.77	4.23
2	O/IRN/12/98	IRN98-12	418	400	26	95.69	4.31
3	O/LEB/6/98	LEB98-06	560	535	0	95.54	4.46
4	O/LEB/9/98	LEB98-09	582	556	17	95.53	4.47
5	O/LEB/17/98	LEB98-17	624	596	3	95.51	4.49
6	O/SYR/1/98	SYR98-01	624	596	9	95.51	4.49
7	O/BAR/8/98	BAR98-08	639	610	0	95.46	4.54
8	O/IRQ/26/2000	IRQ00-26	637	608	2	95.45	4.55
9	O/TAW/3/99	TAW99-03	454	433	11	95.37	4.63
10	O/BAR/1/99	BAR99-01	323	308	0	95.36	4.64
Relationships to Reference Virus Strains							
Pos.	Virus name	Filename	No. nt compared	No. nt matched	No. of ambiguities	% Identity	% Difference
1	O/TAW/2/99	TAW99-02	639	609	0	95.31	4.69
2	O/IND/53/79	IND79A53	639	572	0	89.51	10.49
3	O/IND/R2/75*	IND75--A	639	570	0	89.20	10.80
4	O1/Manisa/TUR/69	TUR69--E	639	566	0	88.58	11.42
5	O/ISR/1/88	ISR88-01	193	168	5	87.05	12.95
6	O/TAI/189/87*	TAI87--B	527	456	3	86.53	13.47
7	O/MOR/1/91	MOR91-01	207	179	3	86.47	13.53
8	O/PHI/5/95	PHI95-05	516	417	6	80.81	19.19
9	O/HKN/6/83	HKN83-06	637	514	2	80.69	19.31
10	O1/BFS 1860/UK/67	UKG67--A	639	507	0	79.34	20.66
nt, nucleotides							
*, not a WRLFMD reference number							



Unrooted Neighbor-joining tree based on a comparison of the complete VP1 gene. The tree was outgroup-rooted using HKN/6/83 & PHI/5/95.

* not a WRLFMD ref. no.