

**Report from the Molecular Epidemiology Section of the Experimental Epidemiology Group to the
Head of the World Reference Laboratory for FMD (Non-QAU Form)**

Serotype: O	Date: 08/06/2003						
Virus isolate: VIT/14/2002	Reported by: N.J. Knowles						
Material used: 10% epithelium susp.	Signed (file copy only):						
Region sequenced: VP1	Seq. filename: VIT02-14						
RT-PCR primer set: O-1C272F/NK61							
Topotype: ME-SA	No. of ambiguities: 0						
Genotype/strain: PanAsia	Date seq. last updated: 07/06/2003						
No. of nt determined / no. in gene: 639 / 639	Total no. of comparisons made: 1304						
Comments:							
Ten Most Closely Related Viruses							
Pos.	Virus name	Filename	No. nt compared	No. nt matched	No. of ambiguities	% Identity	% Difference
1	O/UAE/2/99	UAE99-02	224	220	7	98.21	1.79
2	O/IND/424/97* (1996)	IND96-AJ	165	162	0	98.18	1.82
3	O/IND/61/97* (1996)	IND96-AB	165	162	0	98.18	1.82
4	O/IND/209/99* (1998)	IND98-AU	165	162	0	98.18	1.82
5	O/IND/289/97*	IND97-AW	165	162	0	98.18	1.82
6	O/IND/205/99*	IND99-AI	165	162	0	98.18	1.82
7	O/IND/70/97*	IND97-AJ	164	161	0	98.17	1.83
8	O/VIT/1/2002	VIT02-01	205	201	0	98.05	1.95
9	O/UAE/7/99	UAE99-07	254	249	4	98.03	1.97
10	O/SAU/76/94	SAU94-76	152	149	1	98.03	1.97
Relationships to Reference Virus Strains							
Pos.	Virus name	Filename	No. nt compared	No. nt matched	No. of ambiguities	% Identity	% Difference
1	O/TAW/2/99	TAW99-02	639	623	0	97.50	2.50
2	O/IND/53/79	IND79A53	639	577	0	90.30	9.70
3	O/IND/R2/75*	IND75--A	639	570	0	89.20	10.80
4	O/ISR/1/88	ISR88-01	193	172	5	89.12	10.88
5	O1/Manisa/TUR/69	TUR69--E	639	569	0	89.05	10.95
6	O/MOR/1/91	MOR91-01	207	182	3	87.92	12.08
7	O/TAI/189/87*	TAI87--B	527	459	3	87.10	12.90
8	O/PHI/5/95	PHI95-05	516	426	6	82.56	17.44
9	O/HKN/6/83	HKN83-06	637	521	2	81.79	18.21
10	O1/BFS 1860/UK/67	UKG67--A	639	514	0	80.44	19.56
nt, nucleotides							
*, not a WRLFMD reference number							

cc. Head of Experimental Epidemiology Group

cc. Head of Vesicular Diseases Group

**Report from the Molecular Epidemiology Section of the Experimental Epidemiology Group to the
Head of the World Reference Laboratory for FMD (Non-QAU Form)**

Serotype: O	Date: 08/06/2003						
Virus isolate: VIT/16/2002	Reported by: N.J. Knowles						
Material used: BHK RS1	Signed (file copy only):						
Region sequenced: VP1	Seq. filename: VIT02-16						
RT-PCR primer set: O-1C272F/NK61							
Topotype: ME-SA	No. of ambiguities: 0						
Genotype/strain: PanAsia	Date seq. last updated: 07/06/2003						
No. of nt determined / no. in gene: 639 / 639	Total no. of comparisons made: 1304						
Comments:							
Ten Most Closely Related Viruses							
Pos.	Virus name	Filename	No. nt compared	No. nt matched	No. of ambiguities	% Identity	% Difference
1	O/VIT/12/2002	VIT02-12	639	627	0	98.12	1.88
2	O/VIT/19/2002	VIT02-19	639	625	0	97.81	2.19
3	O/IND/287/99*	IND99-AP	164	160	1	97.56	2.44
4	O/IND/289/97*	IND97-AW	165	160	0	96.97	3.03
5	O/IND/209/99* (1998)	IND98-AU	165	160	0	96.97	3.03
6	O/IND/61/97* (1996)	IND96-AB	165	160	0	96.97	3.03
7	O/IND/70/97*	IND97-AJ	164	159	0	96.95	3.05
8	O/IND/57/98*	IND98-AD	165	159	0	96.36	3.64
9	O/IND/65/98*	IND98-AF	165	159	0	96.36	3.64
10	O/IND/56/98*	IND98-AC	165	159	0	96.36	3.64
Relationships to Reference Virus Strains							
Pos.	Virus name	Filename	No. nt compared	No. nt matched	No. of ambiguities	% Identity	% Difference
1	O/TAW/2/99	TAW99-02	639	613	0	95.93	4.07
2	O1/Manisa/TUR/69	TUR69--E	639	573	0	89.67	10.33
3	O/IND/53/79	IND79A53	639	571	0	89.36	10.64
4	O/IND/R2/75*	IND75--A	639	566	0	88.58	11.42
5	O/TAI/189/87*	TAI87--B	527	456	3	86.53	13.47
6	O/ISR/1/88	ISR88-01	193	166	5	86.01	13.99
7	O/MOR/1/91	MOR91-01	207	177	3	85.51	14.49
8	O/HKN/6/83	HKN83-06	637	514	2	80.69	19.31
9	O/PHI/5/95	PHI95-05	516	416	6	80.62	19.38
10	O1/BFS 1860/UK/67	UKG67--A	639	512	0	80.13	19.87
nt, nucleotides							
*, not a WRLFMD reference number							

cc. Head of Experimental Epidemiology Group

cc. Head of Vesicular Diseases Group

**Report from the Molecular Epidemiology Section of the Experimental Epidemiology Group to the
Head of the World Reference Laboratory for FMD (Non-QAU Form)**

Serotype: O	Date: 08/06/2003						
Virus isolate: VIT/17/2002	Reported by: N.J. Knowles						
Material used: 10% epithelium susp.	Signed (file copy only):						
Region sequenced: VP1	Seq. filename: VIT02-17						
RT-PCR primer set: O-1C272F/NK61							
Topotype: Cathay	No. of ambiguities: 0						
Genotype/strain: Hkn94	Date seq. last updated: 07/06/2003						
No. of nt determined / no. in gene: 629 / 639	Total no. of comparisons made: 1304						
Comments:							
Ten Most Closely Related Viruses							
Pos.	Virus name	Filename	No. nt compared	No. nt matched	No. of ambiguities	% Identity	% Difference
1	O/VIT/2/99	VIT99-02	447	434	8	97.09	2.91
2	O/VIT/6/99	VIT99-06	503	487	1	96.82	3.18
3	O/VIT/13/2002	VIT02-13	629	607	0	96.50	3.50
4	O/VIT/3/99	VIT99-03	502	483	2	96.22	3.78
5	O/HKN/10/98	HKN98-10	605	582	2	96.20	3.80
6	O/HKN/5/97	HKN97-05	546	522	7	95.60	4.40
7	O/HKN/6/97	HKN97-06	579	553	5	95.51	4.49
8	O/HKN/9/94	HKN94-09	360	343	0	95.28	4.72
9	O/N1685/RUS/95*	RUS95--B	290	276	1	95.17	4.83
10	O/HKN/6/94	HKN94-06	246	234	0	95.12	4.88
Relationships to Reference Virus Strains							
Pos.	Virus name	Filename	No. nt compared	No. nt matched	No. of ambiguities	% Identity	% Difference
1	O/PHI/5/95	PHI95-05	516	473	6	91.67	8.33
2	O/HKN/6/83	HKN83-06	627	547	2	87.24	12.76
3	O/TAW/2/99	TAW99-02	629	515	0	81.88	18.12
4	O/IND/53/79	IND79A53	629	513	0	81.56	18.44
5	O/ISR/1/88	ISR88-01	193	157	5	81.35	18.65
6	O/MOR/1/91	MOR91-01	207	168	3	81.16	18.84
7	O1/Manisa/TUR/69	TUR69--E	629	502	0	79.81	20.19
8	O/IND/R2/75*	IND75--A	629	501	0	79.65	20.35
9	O/TAI/189/87*	TAI87--B	527	416	3	78.94	21.06
10	O1/BFS 1860/UK/67	UKG67--A	629	483	0	76.79	23.21
nt, nucleotides							
*, not a WRLFMD reference number							

cc. Head of Experimental Epidemiology Group

cc. Head of Vesicular Diseases Group

**Report from the Molecular Epidemiology Section of the Experimental Epidemiology Group to the
Head of the World Reference Laboratory for FMD (Non-QAU Form)**

Serotype: O	Date: 08/06/2003						
Virus isolate: VIT/19/2002	Reported by: N.J. Knowles						
Material used: 10% epithelium susp.	Signed (file copy only):						
Region sequenced: VP1	Seq. filename: VIT02-19						
RT-PCR primer set: O-1C272F/NK61							
Topotype: ME-SA	No. of ambiguities: 0						
Genotype/strain: PanAsia	Date seq. last updated: 07/06/2003						
No. of nt determined / no. in gene: 639 / 639	Total no. of comparisons made: 1304						
Comments:							
Ten Most Closely Related Viruses							
Pos.	Virus name	Filename	No. nt compared	No. nt matched	No. of ambiguities	% Identity	% Difference
1	O/VIT/12/2002	VIT02-12	639	635	0	99.37	0.63
2	O/IND/289/97*	IND97-AW	165	163	0	98.79	1.21
3	O/IND/61/97* (1996)	IND96-AB	165	163	0	98.79	1.21
4	O/IND/209/99* (1998)	IND98-AU	165	163	0	98.79	1.21
5	O/IND/160/99*	IND99-AF	209	206	1	98.56	1.44
6	O/IND/56/98*	IND98-AC	165	162	0	98.18	1.82
7	O/IND/57/98*	IND98-AD	165	162	0	98.18	1.82
8	O/IND/48/98* (1997)	IND97-BC	165	162	0	98.18	1.82
9	O/IND/65/98*	IND98-AF	165	162	0	98.18	1.82
10	O/IND/54/98*	IND98-AA	165	162	0	98.18	1.82
Relationships to Reference Virus Strains							
Pos.	Virus name	Filename	No. nt compared	No. nt matched	No. of ambiguities	% Identity	% Difference
1	O/TAW/2/99	TAW99-02	639	619	0	96.87	3.13
2	O/IND/53/79	IND79A53	639	573	0	89.67	10.33
3	O1/Manisa/TUR/69	TUR69--E	639	569	0	89.05	10.95
4	O/IND/R2/75*	IND75--A	639	566	0	88.58	11.42
5	O/ISR/1/88	ISR88-01	193	167	5	86.53	13.47
6	O/TAI/189/87*	TAI87--B	527	456	3	86.53	13.47
7	O/MOR/1/91	MOR91-01	207	179	3	86.47	13.53
8	O/PHI/5/95	PHI95-05	516	423	6	81.98	18.02
9	O/HKN/6/83	HKN83-06	637	516	2	81.00	19.00
10	O1/BFS 1860/UK/67	UKG67--A	639	517	0	80.91	19.09
nt, nucleotides							
*, not a WRLFMD reference number							

cc. Head of Experimental Epidemiology Group

cc. Head of Vesicular Diseases Group

**Report from the Molecular Epidemiology Section of the Experimental Epidemiology Group to the
Head of the World Reference Laboratory for FMD (Non-QAU Form)**

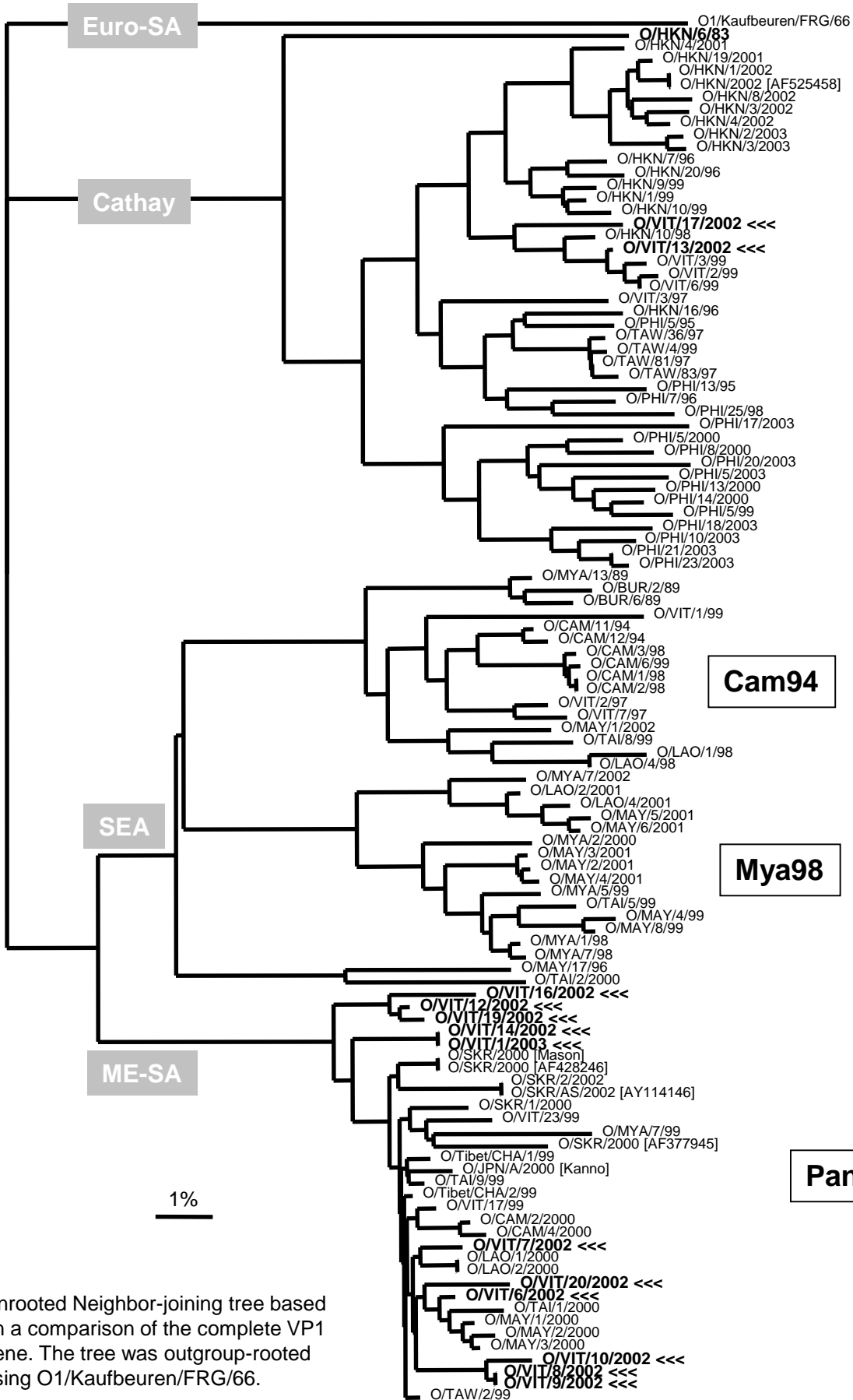
Serotype: O	Date: 08/06/2003						
Virus isolate: VIT/20/2002	Reported by: N.J. Knowles						
Material used: 10% epithelium susp.	Signed (file copy only):						
Region sequenced: VP1	Seq. filename: VIT02-20						
RT-PCR primer set: O-1C272F/NK61							
Topotype: ME-SA	No. of ambiguities: 0						
Genotype/strain: PanAsia	Date seq. last updated: 07/06/2003						
No. of nt determined / no. in gene: 639 / 639	Total no. of comparisons made: 1304						
Comments:							
Ten Most Closely Related Viruses							
Pos.	Virus name	Filename	No. nt compared	No. nt matched	No. of ambiguities	% Identity	% Difference
1	O/VIT/1/2002	VIT02-01	205	202	0	98.54	1.46
2	O/UAE/2/99	UAE99-02	224	220	7	98.21	1.79
3	O/IND/61/97* (1996)	IND96-AB	165	162	0	98.18	1.82
4	O/IND/289/97*	IND97-AW	165	162	0	98.18	1.82
5	O/IND/209/99* (1998)	IND98-AU	165	162	0	98.18	1.82
6	O/UAE/7/99	UAE99-07	254	249	4	98.03	1.97
7	O/TAW/2/99	TAW99-02	639	626	0	97.97	2.03
8	O/VIT/6/2002	VIT02-06	638	625	1	97.96	2.04
9	O/TAW/1/99	TAW99-01	634	621	5	97.95	2.05
10	O/Hainan/CHA/4/99*	CHA99-04	639	625	0	97.81	2.19
Relationships to Reference Virus Strains							
Pos.	Virus name	Filename	No. nt compared	No. nt matched	No. of ambiguities	% Identity	% Difference
1	O/TAW/2/99	TAW99-02	639	626	0	97.97	2.03
2	O/IND/53/79	IND79A53	639	572	0	89.51	10.49
3	O1/Manisa/TUR/69	TUR69--E	639	570	0	89.20	10.80
4	O/IND/R2/75*	IND75--A	639	563	0	88.11	11.89
5	O/ISR/1/88	ISR88-01	193	168	5	87.05	12.95
6	O/MOR/1/91	MOR91-01	207	180	3	86.96	13.04
7	O/TAI/189/87*	TAI87--B	527	457	3	86.72	13.28
8	O/PHI/5/95	PHI95-05	516	421	6	81.59	18.41
9	O/HKN/6/83	HKN83-06	637	515	2	80.85	19.15
10	O1/BFS 1860/UK/67	UKG67--A	639	509	0	79.66	20.34
nt, nucleotides							
*, not a WRLFMD reference number							

cc. Head of Experimental Epidemiology Group

cc. Head of Vesicular Diseases Group

**Report from the Molecular Epidemiology Section of the Dept. of Exotic Disease Control to
the Head of the World Reference Laboratory for FMD (Non-QAU Form)**

Serotype: O		Report date: 06/02/2004					
Virus isolate: VIT/1/2003							
Material used: BHK BTy1							
Region sequenced: VP1		Topotype: ME-SA					
RT-PCR primers: O-1C272F/NK61		Genotype/strain: PanAsia					
No. of nt determined: 639		Seq. filename: VIT03-01					
No. nt in gene: 639		Date sequence last updated: 06/02/2004					
No. of ambiguities: 0		Total no. of comparisons made: 1326					
Comments:							
Ten Most Closely Related Viruses							
Pos.	Virus name	Filename	No. nt compared	No. nt matched	No. of ambiguities	% Identity	% Difference
1	O/VIT/14/2002	VIT02-14	639	639	0	100.00	0.00
2	O/UAE/2/99	UAE99-02	224	220	7	98.21	1.79
3	O/IND/205/99*	IND99-AI	165	162	0	98.18	1.82
4	O/IND/289/97*	IND97-AW	165	162	0	98.18	1.82
5	O/IND/424/97* (1996)	IND96-AJ	165	162	0	98.18	1.82
6	O/IND/209/99* (1998)	IND98-AU	165	162	0	98.18	1.82
7	O/IND/61/97* (1996)	IND96-AB	165	162	0	98.18	1.82
8	O/IND/70/97*	IND97-AJ	164	161	0	98.17	1.83
9	O/VIT/1/2002	VIT02-01	205	201	0	98.05	1.95
10	O/UAE/7/99	UAE99-07	254	249	4	98.03	1.97
Relationships to Reference Virus Strains							
Pos.	Virus name	Filename	No. nt compared	No. nt matched	No. of ambiguities	% Identity	% Difference
1	O/TAW/2/99	TAW99-02	639	623	0	97.50	2.50
2	O/IND/53/79	IND79A53	639	577	0	90.30	9.70
3	O/IND/R2/75*	IND75--A	639	570	0	89.20	10.80
4	O/ISR/1/88	ISR88-01	193	172	5	89.12	10.88
5	O1/Manisa/TUR/69	TUR69--E	639	569	0	89.05	10.95
6	O/MOR/1/91	MOR91-01	207	182	3	87.92	12.08
7	O/TAI/189/87*	TAI87--B	527	459	3	87.10	12.90
8	O/PHI/5/95	PHI95-05	516	426	6	82.56	17.44
9	O/HKN/6/83	HKN83-06	637	521	2	81.79	18.21
10	O1/BFS 1860/UK/67	UKG67--A	639	514	0	80.44	19.56
nt, nucleotides							
*, not a WRLFMD reference number							



Unrooted Neighbor-joining tree based on a comparison of the complete VP1 gene. The tree was outgroup-rooted using O1/Kaufbeuren/FRG/66.