

Serotype: SAT2				Report date: 07/12/2004			
WRL Ref No: BOT/29/2002							
Date collected: 08/02/2002							
Date received: 17/05/2004				Topotype: none defined			
Species: Bovine				Genotype/strain: none designated			
Material used: IRM2 BTy1				Sequence filename: BOT02-29.SEQ			
Region sequenced: VP1				Date sequence last updated: 31/08/2004			
RT-PCR primers: SAT2VP3-AB/SAT-2B208R				Total no. of comparisons: 305			
No. of Nt determined: 648				Min. no. of nt for comparison: 300			
No. of ambiguities: 0							
Gene length: 648							
Comments:							
Ten Most Closely Related Viruses							
Pos.	Virus name	Filename	No. nt compared	No. nt matched	No. of ambiguities	% Identity	% Difference
1	SAT2/BOT/8/2002	BOT02-08	418	418	0	100	0
2	SAT2/BOT/11/2002	BOT02-11	384	384	0	100	0
3	SAT2/BOT/30/2002	BOT02-30	648	648	0	100	0
4	SAT2/BOT/13/2002	BOT02-13	647	645	1	99.69	0.31
5	SAT2/ZIM/1/2001 [OVI]	ZIM01A01	384	381	0	99.22	0.78
6	SAT2/ZIM/1/2001	ZIM01-01	648	642	0	99.07	0.93
7	SAT2/ZIM/2/2001	ZIM01-02	648	640	0	98.77	1.23
8	SAT2/ZIM/16/2002	ZIM02-16	648	631	0	97.38	2.62
9	SAT2/ZIM/5/2002	ZIM02-05	648	631	0	97.38	2.62
10	SAT2/ZIM/7/2002	ZIM02-07	648	631	0	97.38	2.62
Relationships to Reference Virus Strains							
Pos.	Virus name	Filename	No. nt compared	No. nt matched	No. of ambiguities	% Identity	% Difference
1	SAT2/ZIM/9/89	ZIM89-09	218	176	1	80.73	19.27
2	SAT2/ZIM/7/83 [AF136607]	ZIM83A07	648	521	0	80.4	19.6
3	SAT2/RHO/1/48 [AJ251475]	ZAM48A01	648	491	0	75.77	24.23
4	SAT2/ZAM/3/81 (OVI)	ZAM81V03	198	150	6	75.76	24.24
5	SAT2/K52/84 (Kenya)	KEN84K52	418	316	0	75.6	24.4
6	SAT2/RSA/106/59 [AY593848]	RSA59--A	648	488	0	75.31	24.69
7	SAT2/KEN/11/60 [AY593849]	KEN60--A	648	466	0	71.91	28.09
8	SAT2/KEN/3/57	KEN57-03	648	458	0	70.68	29.32
nt, nucleotides							
*, not a WRLFMD reference number							

Serotype: SAT2	Report date: 07/12/2004
WRL Ref No: BOT/30/2002	
Date collected: 08/02/2002	
Date received: 17/05/2004	Topotype: none defined
Species: Bovine	Genotype/strain: none designated
Material used: RM2 BTy1	Sequence filename: BOT02-30.SEQ
Region sequenced: VP1	Date sequence last updated: 31/08/2004
RT-PCR primers: SAT2VP3-AB/SAT-2B208R	Total no. of comparisons: 305
No. of Nt determined: 648	Min. no. of nt for comparison: 300
No. of ambiguities: 0	
Gene length: 648	

Comments:

Ten Most Closely Related Viruses

Pos.	Virus name	Filename	No. nt compared	No. nt matched	No. of ambiguities	% Identity	% Difference
1	SAT2/BOT/8/2002	BOT02-08	418	418	0	100	0
2	SAT2/BOT/11/2002	BOT02-11	384	384	0	100	0
3	SAT2/BOT/29/2002	BOT02-29	648	648	0	100	0
4	SAT2/BOT/13/2002	BOT02-13	647	645	1	99.69	0.31
5	SAT2/ZIM/1/2001 [OVI]	ZIM01A01	384	381	0	99.22	0.78
6	SAT2/ZIM/1/2001	ZIM01-01	648	642	0	99.07	0.93
7	SAT2/ZIM/2/2001	ZIM01-02	648	640	0	98.77	1.23
8	SAT2/ZIM/16/2002	ZIM02-16	648	631	0	97.38	2.62
9	SAT2/ZIM/5/2002	ZIM02-05	648	631	0	97.38	2.62
10	SAT2/ZIM/7/2002	ZIM02-07	648	631	0	97.38	2.62

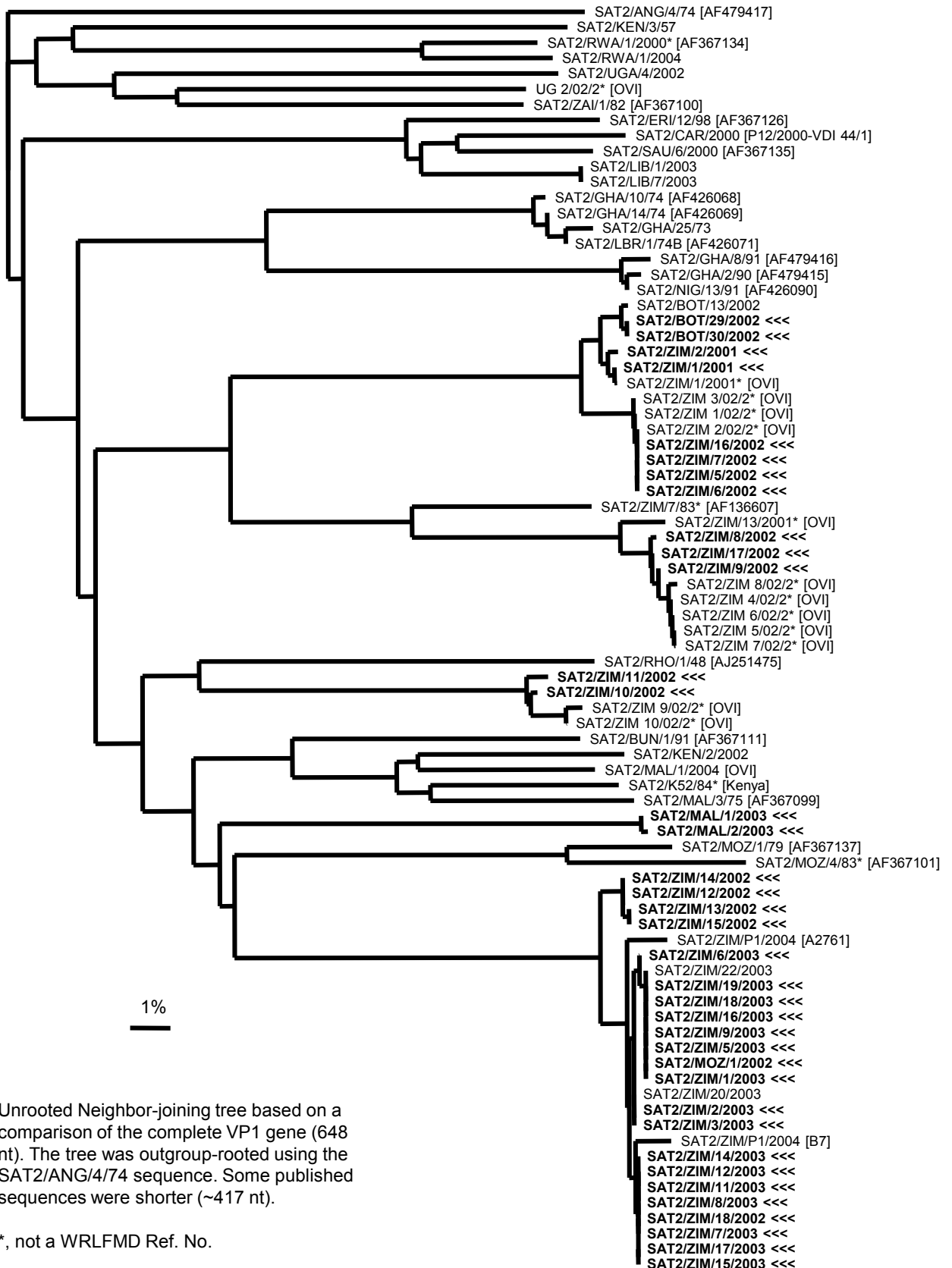
Relationships to Reference Virus Strains

Pos.	Virus name	Filename	No. nt compared	No. nt matched	No. of ambiguities	% Identity	% Difference
1	SAT2/ZIM/9/89	ZIM89-09	218	176	1	80.73	19.27
2	SAT2/ZIM/7/83 [AF136607]	ZIM83A07	648	521	0	80.4	19.6
3	SAT2/RHO/1/48 [AJ251475]	ZAM48A01	648	491	0	75.77	24.23
4	SAT2/ZAM/3/81 (OVI)	ZAM81V03	198	150	6	75.76	24.24
5	SAT2/K52/84 (Kenya)	KEN84K52	418	316	0	75.6	24.4
6	SAT2/RSA/106/59 [AY593848]	RSA59--A	648	488	0	75.31	24.69
7	SAT2/KEN/11/60 [AY593849]	KEN60--A	648	466	0	71.91	28.09
8	SAT2/KEN/3/57	KEN57-03	648	458	0	70.68	29.32

nt, nucleotides

*, not a WRLFMD reference number

Report on FMDV SAT 2 isolates received from the Botswana Vaccine Institute during 2004



Unrooted Neighbor-joining tree based on a comparison of the complete VP1 gene (648 nt). The tree was outgroup-rooted using the SAT2/ANG/4/74 sequence. Some published sequences were shorter (~417 nt).

* , not a WRLFMD Ref. No.