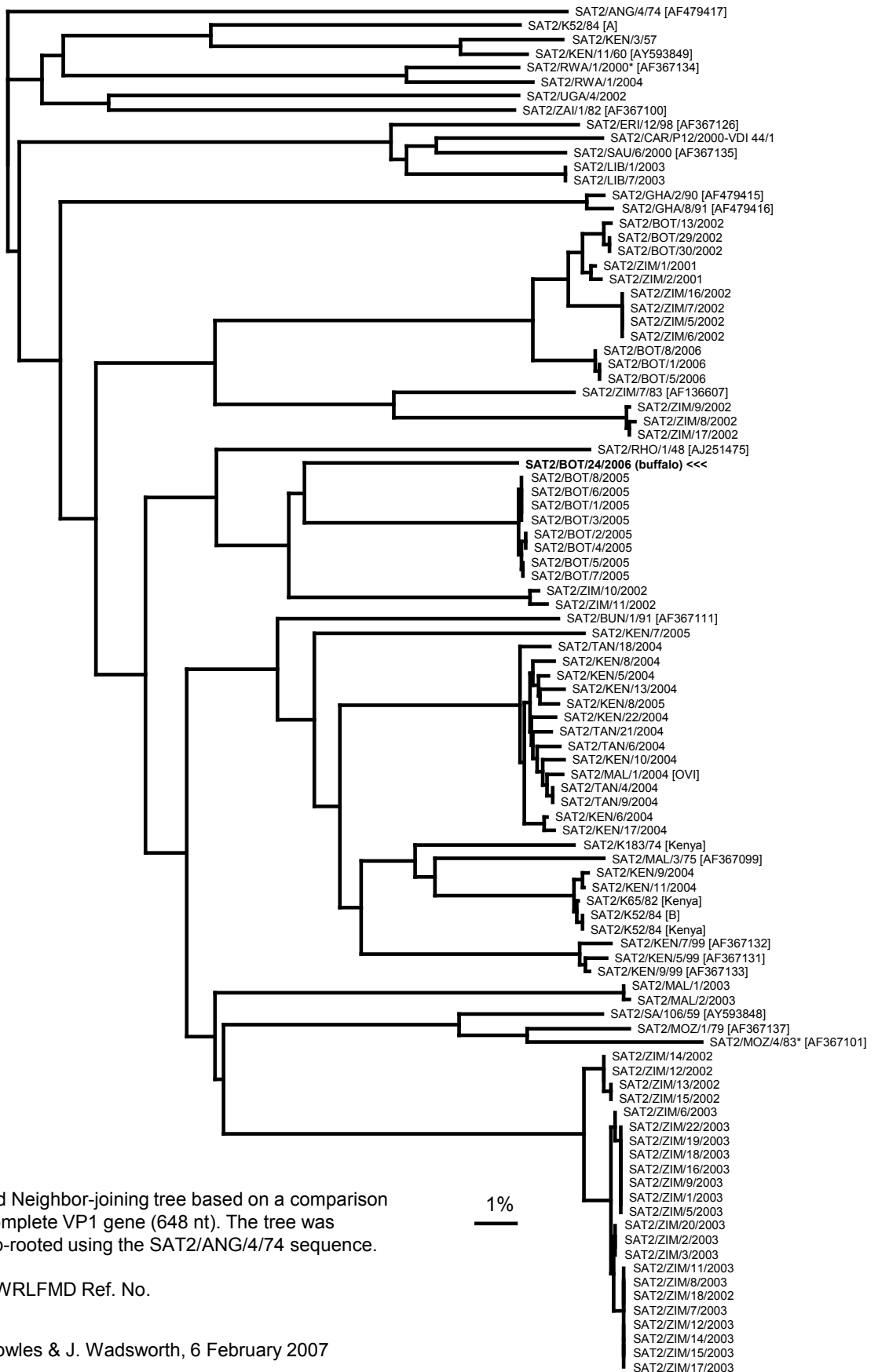


Serotype: SAT2	Report date: 05/02/2007						
WRL Ref No: BOT/24/2006							
Sender Ref: BOT 07/06 BUFFALO 6							
Date collected: 19/07/2006							
Date received by WRLFMD: 08/12/2006	Topotype: none defined						
Date received for sequencing: 18/12/2006	Genotype/strain: none designated						
Species: African buffalo (<i>Syncerus caffer</i>)	Sequence filename: BOT06-24.SEQ						
Material used: BTy2	Date sequence last updated: 05/02/2007						
Region sequenced: VP1	Total no. of comparisons: 353						
RT-PCR primers: SAT2-1C445F/SAT-2B208R; SAT2-P1-1223F/SAT-2B208R	Min. no. of nt for comparison: 300						
No. of Nt determined: 648	Total turn-around time: 59 days						
No. of ambiguities: 0	Sequencing time: 49 days						
Gene length: 648							
Comments:							
Ten Most Closely Related Viruses							
Pos.	Virus name	Filename	No. nt compared	No. nt matched	No. of ambiguities	% Identity	% Difference
1	SAT2/BOT/1/2005	BOT05-01	648	578	0	89.2	10.8
2	SAT2/BOT/3/2005	BOT05-03	648	578	0	89.2	10.8
3	SAT2/BOT/6/2005	BOT05-06	648	578	0	89.2	10.8
4	SAT2/BOT/8/2005	BOT05-08	648	578	0	89.2	10.8
5	SAT2/BOT/2/2005	BOT05-02	648	577	0	89.04	10.96
6	SAT2/BOT/4/2005	BOT05-04	648	577	0	89.04	10.96
7	SAT2/BOT/5/2005	BOT05-05	648	576	0	88.89	11.11
8	SAT2/BOT/7/2005	BOT05-07	648	576	0	88.89	11.11
9	SAT2/BOT/29/98* (AF367124)	BOT98-AC	647	574	1	88.72	11.28
10	SAT2/ZIM/10/2002	ZIM02-10	648	574	0	88.58	11.42
Relationships to Reference Virus Strains							
Pos.	Virus name	Filename	No. nt compared	No. nt matched	No. of ambiguities	% Identity	% Difference
1	SAT2/RHO/1/48 [AJ251475]	ZAM48A01	648	543	0	83.8	16.2
2	SAT2/K65/82 (Kenya)	KEN82K65	648	527	0	81.33	18.67
3	SAT2/K183/74 (Kenya)	KEN74183	648	517	0	79.78	20.22
4	SAT2/SA/106/59 [AY593848]	RSA59--A	648	508	0	78.4	21.6
5	SAT2/ZIM/7/83 [AF136607]	ZIM83A07	648	496	0	76.54	23.46
6	SAT2/KEN/11/60 [AY593849]	KEN60--A	648	483	0	74.54	25.46
7	SAT2/K52/84 (A)	KEN84-AA	648	478	0	73.77	26.23
8	SAT2/KEN/3/57	KEN57-03	648	476	0	73.46	26.54
nt, nucleotides							
*, not a WRLFMD reference number							

Report on a FMDV SAT 2 isolate from an African buffalo (*Syncerus caffer*) in Botswana in 2006



Unrooted Neighbor-joining tree based on a comparison of the complete VP1 gene (648 nt). The tree was outgroup-rooted using the SAT2/ANG/4/74 sequence.

1%
 ———

* , not a WRLFMD Ref. No.