

Serotype: A  
WRL Ref No: IRN/3/2007  
Sender Ref: IR 71  
Date collected: 24/01/2007  
Date received by WRLFMD: 12/03/2007  
Date received for sequencing: 21/03/2007  
Species: Cattle  
Material used: BTy1  
Region sequenced: VP1  
RT-PCR primers: A-1C562F/EUR-2B52R;  
A-1C612F/EUR-2B52R  
No. of Nt determined: 639  
No. of ambiguities: 0  
Gene length: 639

Report date: 10/04/2007  
Topotype: Asia  
Genotype/strain: Irn-05  
Sequence filename: IRN07-03.SEQ  
Date sequence last updated: 05/04/2007  
Total no. of comparisons: 806  
Min. no. of nt for comparison: 300  
Total turn-around time: 29 days  
Sequencing time: 20 days

Comments:

### Ten Most Closely Related Viruses

Pos.	Virus name	Filename	No. nt compared	No. nt matched	No. of ambiguities	% Identity	% Difference
1	A/PAK/5/2006	PAK06-05	639	630	0	98.59	1.41
2	A/IRN/24/2005	IRN05-24	639	624	0	97.65	2.35
3	A/IRN/53/2005	IRN05-53	639	624	0	97.65	2.35
4	A/IRN/34/2005	IRN05-34	639	622	0	97.34	2.66
5	A/IRN/36/2005	IRN05-36	639	622	0	97.34	2.66
6	A/IRN/22/2005	IRN05-22	639	621	0	97.18	2.82
7	A/IRN/27/2005	IRN05-27	639	621	0	97.18	2.82
8	A/IRN/5/2005	IRN05-05	639	621	0	97.18	2.82
9	A/SAU/15/2005	SAU05-15	639	621	0	97.18	2.82
10	A/SAU/16/2005	SAU05-16	639	621	0	97.18	2.82

### Relationships to Reference Virus Strains

Pos.	Virus name	Filename	No. nt compared	No. nt matched	No. of ambiguities	% Identity	% Difference
1	A/IND/7/82 (1980)	IND82-07	639	543	0	84.98	15.02
2	A/SAU/41/91	SAU91-41	636	538	0	84.59	15.41
3	A/IRN/22/99 (EF208772)	IRN99-22	636	536	0	84.28	15.72
4	A/TAI/118/87* (EF208777)	TAI87-AD	636	533	0	83.81	16.19
5	A/IRN/87	IRN87--M	634	531	2	83.75	16.25
6	A/IRN/1/96 (EF208771)	IRN96-01	638	530	1	83.07	16.93
7	A/SAU/23/86	SAU86-23	639	530	0	82.94	17.06
8	A/TAI/2/97 (EF208778)	TAI97-02	636	526	0	82.7	17.3
9	A22/IRQ/24/64 (AJ251474)	IRQ64-24	639	527	0	82.47	17.53
10	A24/Cruzeiro/BRA/55 (AJ251476)	BRA55--C	639	507	0	79.34	20.66

nt, nucleotides

\*, not a WRLFMD reference number

Serotype: A Report date: 10/04/2007  
WRL Ref No: IRN/15/2007  
Sender Ref: IR 66  
Date collected: 20/02/2007 Topotype: Asia  
Date received by WRLFMD: 12/03/2007 Genotype/strain: Irn-05  
Date received for sequencing: 21/03/2007 Sequence filename: IRN07-15.SEQ  
Species: Goats Date sequence last updated: 06/04/2007  
Material used: BTy1 Total no. of comparisons: 806  
Region sequenced: VP1 Min. no. of nt for comparison: 300  
RT-PCR primers: A-1C562F/EUR-2B52R; Total turn-around time: 29 days  
A-1C612F/EUR-2B52R Sequencing time: 20 days  
No. of Nt determined: 639  
No. of ambiguities: 0  
Gene length: 639

Comments:

**Ten Most Closely Related Viruses**

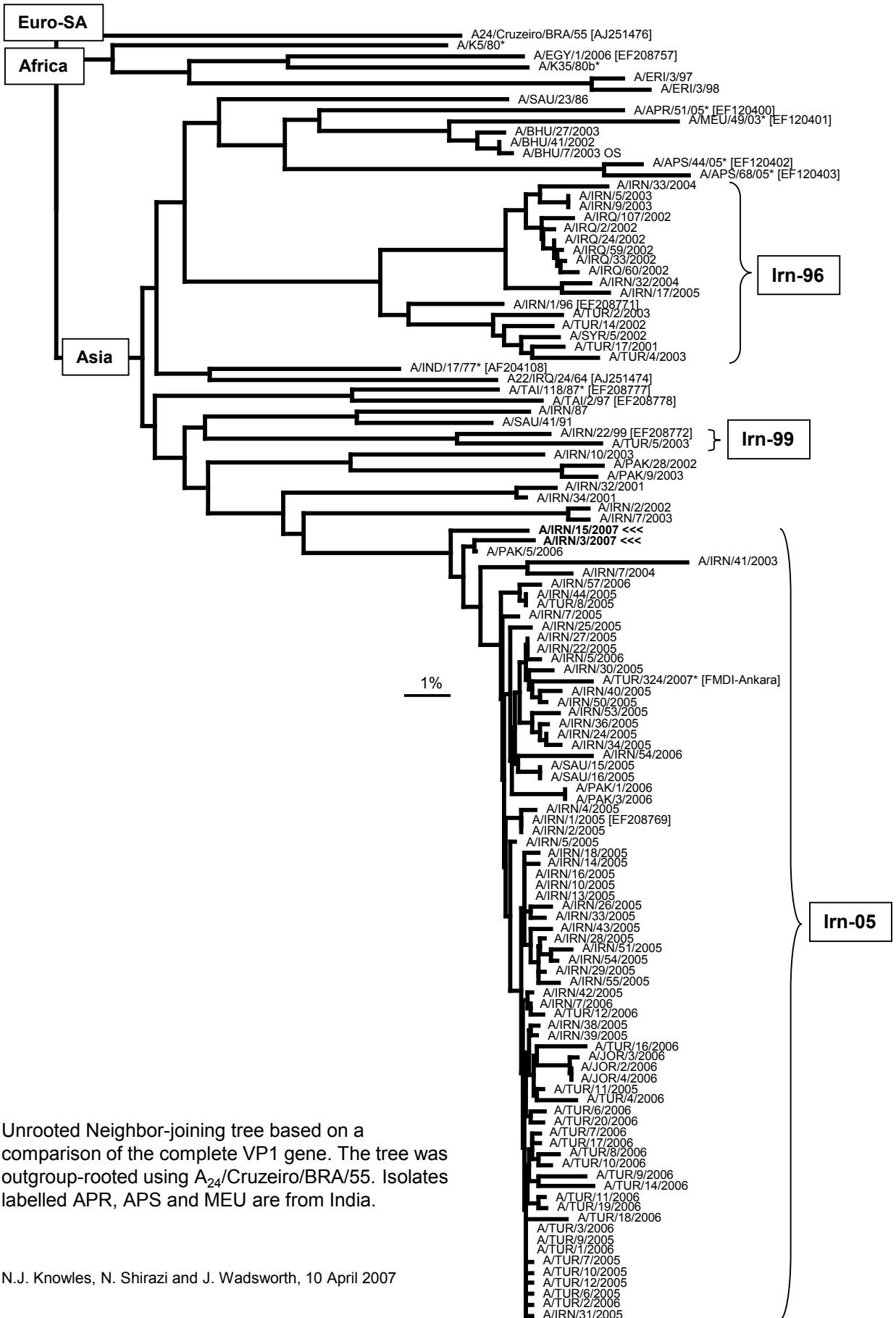
Pos.	Virus name	Filename	No. nt compared	No. nt matched	No. of ambiguities	% Identity	% Difference
1	A/PAK/5/2006	PAK06-05	639	624	0	97.65	2.35
2	A/IRN/22/2005	IRN05-22	639	620	0	97.03	2.97
3	A/IRN/27/2005	IRN05-27	639	620	0	97.03	2.97
4	A/IRN/5/2006	IRN06-05	639	620	0	97.03	2.97
5	A/IRN/3/2007	IRN07-03	639	619	0	96.87	3.13
6	A/IRN/50/2005	IRN05-50	639	619	0	96.87	3.13
7	A/IRN/53/2005	IRN05-53	639	619	0	96.87	3.13
8	A/IRN/5/2005	IRN05-05	639	618	0	96.71	3.29
9	A/SAU/15/2005	SAU05-15	639	618	0	96.71	3.29
10	A/SAU/16/2005	SAU05-16	639	618	0	96.71	3.29

**Relationships to Reference Virus Strains**

Pos.	Virus name	Filename	No. nt compared	No. nt matched	No. of ambiguities	% Identity	% Difference
1	A/IND/7/82 (1980)	IND82-07	639	549	0	85.92	14.08
2	A/SAU/41/91	SAU91-41	636	544	0	85.53	14.47
3	A/IRN/22/99 (EF208772)	IRN99-22	636	539	0	84.75	15.25
4	A/IRN/87	IRN87--M	634	535	2	84.38	15.62
5	A/TAI/118/87* (EF208777)	TAI87-AD	636	534	0	83.96	16.04
6	A/IRN/1/96 (EF208771)	IRN96-01	638	533	1	83.54	16.46
7	A/SAU/23/86	SAU86-23	639	531	0	83.1	16.9
8	A/TAI/2/97 (EF208778)	TAI97-02	636	525	0	82.55	17.45
9	A22/IRQ/24/64 (AJ251474)	IRQ64-24	639	523	0	81.85	18.15
10	A24/Cruzeiro/BRA/55 (AJ251476)	BRA55--C	639	510	0	79.81	20.19

nt, nucleotides  
\*, not a WRLFMD reference number

# Report on FMDV A sequences from Iran in 2007



Unrooted Neighbor-joining tree based on a comparison of the complete VP1 gene. The tree was outgroup-rooted using A<sub>24</sub>/Cruzeiro/BRA/55. Isolates labelled APR, APS and MEU are from India.