

Serotype: A Report date: 10/05/2007  
WRL Ref No: EGY/6/2006  
Sender Ref: FMD/KIH8802/Fa/06/Egy  
Date collected: 2006  
Date received by WRLFMD: 27/04/2007 Topotype: AFRICA  
Date received for sequencing: 02/05/2007 Genotype/strain: none designated  
Species: Not known Sequence filename: EGY06-06.SEQ  
Material used: CK2 BHK3 BTy1 Date sequence last updated: 08/05/2007  
Region sequenced: VP1 Total no. of comparisons: 849  
RT-PCR primers: A-1C562F/EUR-2B52R; Min. no. of nt for comparison: 300  
A-1C612F/EUR-2B52R Total turn-around time: 13 days  
No. of Nt determined: 639 Sequencing time: 8 days  
No. of ambiguities: 0  
Gene length: 639

Comments:

### Ten Most Closely Related Viruses

Pos.	Virus name	Filename	No. nt compared	No. nt matched	No. of ambiguities	% Identity	% Difference
1	A/EGY/7/2006	EGY06-07	639	639	0	100	0
2	A/EGY/9/2006	EGY06-09	639	639	0	100	0
3	A/EGY/5/2006 (EF208761)	EGY06-05	639	637	0	99.69	0.31
4	A/EGY/3/2006 (EF208759)	EGY06-03	639	636	0	99.53	0.47
5	A/EGY/4/2006 (EF208760)	EGY06-04	639	636	0	99.53	0.47
6	A/EGY/1/2006 (EF208757)	EGY06-01	639	634	0	99.22	0.78
7	A/EGY/2006 (EF159977)	EGY06-AB	639	634	0	99.22	0.78
8	A/EGY/2/2006 (EF208758)	EGY06-02	639	633	0	99.06	0.94
9	A/KEN/29/2005 (EF208773)	KEN05-29	639	619	0	96.87	3.13
10	A/KEN/15/98 (EF208774)	KEN98-15	639	603	0	94.37	5.63

### Relationships to Reference Virus Strains

Pos.	Virus name	Filename	No. nt compared	No. nt matched	No. of ambiguities	% Identity	% Difference
1	A22/IRQ/24/64 (AJ251474)	IRQ64-24	639	511	0	79.97	20.03
2	A/TAI/2/97 (EF208778)	TAI97-02	636	508	0	79.87	20.13
3	A24/Cruzeiro/BRA/55 (AJ251476)	BRA55--C	639	510	0	79.81	20.19
4	A/TAI/118/87* (EF208777)	TAI87-AD	636	506	0	79.56	20.44
5	A/IND/7/82 (1980)	IND82-07	639	508	0	79.5	20.5
6	A/SAU/41/91	SAU91-41	636	504	0	79.25	20.75
7	A/IRN/1/96 (EF208771)	IRN96-01	638	504	1	79	21
8	A/IRN/87	IRN87--M	634	498	2	78.55	21.45
9	A/SAU/23/86	SAU86-23	639	493	0	77.15	22.85
10	A/IRN/22/99 (EF208772)	IRN99-22	636	486	0	76.42	23.58

nt, nucleotides

\*, not a WRLFMD reference number

Serotype: A Report date: 10/05/2007  
WRL Ref No: EGY/7/2006  
Sender Ref: FMD/KIH5803/Ka/06/Egy  
Date collected: 2006  
Date received by WRLFMD: 27/04/2007 Topotype: AFRICA  
Date received for sequencing: 02/05/2007 Genotype/strain: none designated  
Species: Not known Sequence filename: EGY06-07.SEQ  
Material used: CK2 BHK3 BTy1 Date sequence last updated: 08/05/2007  
Region sequenced: VP1 Total no. of comparisons: 849  
RT-PCR primers: A-1C562F/EUR-2B52R; Min. no. of nt for comparison: 300  
A-1C612F/EUR-2B52R Total turn-around time: 13 days  
No. of Nt determined: 639 Sequencing time: 8 days  
No. of ambiguities: 0  
Gene length: 639

Comments:

### Ten Most Closely Related Viruses

Pos.	Virus name	Filename	No. nt compared	No. nt matched	No. of ambiguities	% Identity	% Difference
1	A/EGY/6/2006	EGY06-06	639	639	0	100	0
2	A/EGY/9/2006	EGY06-09	639	639	0	100	0
3	A/EGY/5/2006 (EF208761)	EGY06-05	639	637	0	99.69	0.31
4	A/EGY/3/2006 (EF208759)	EGY06-03	639	636	0	99.53	0.47
5	A/EGY/4/2006 (EF208760)	EGY06-04	639	636	0	99.53	0.47
6	A/EGY/1/2006 (EF208757)	EGY06-01	639	634	0	99.22	0.78
7	A/EGY/2006 (EF159977)	EGY06-AB	639	634	0	99.22	0.78
8	A/EGY/2/2006 (EF208758)	EGY06-02	639	633	0	99.06	0.94
9	A/KEN/29/2005 (EF208773)	KEN05-29	639	619	0	96.87	3.13
10	A/KEN/15/98 (EF208774)	KEN98-15	639	603	0	94.37	5.63

### Relationships to Reference Virus Strains

Pos.	Virus name	Filename	No. nt compared	No. nt matched	No. of ambiguities	% Identity	% Difference
1	A22/IRQ/24/64 (AJ251474)	IRQ64-24	639	511	0	79.97	20.03
2	A/TAI/2/97 (EF208778)	TAI97-02	636	508	0	79.87	20.13
3	A24/Cruzeiro/BRA/55 (AJ251476)	BRA55--C	639	510	0	79.81	20.19
4	A/TAI/118/87* (EF208777)	TAI87-AD	636	506	0	79.56	20.44
5	A/IND/7/82 (1980)	IND82-07	639	508	0	79.5	20.5
6	A/SAU/41/91	SAU91-41	636	504	0	79.25	20.75
7	A/IRN/1/96 (EF208771)	IRN96-01	638	504	1	79	21
8	A/IRN/87	IRN87--M	634	498	2	78.55	21.45
9	A/SAU/23/86	SAU86-23	639	493	0	77.15	22.85
10	A/IRN/22/99 (EF208772)	IRN99-22	636	486	0	76.42	23.58

nt, nucleotides

\*, not a WRLFMD reference number

Serotype: A Report date: 10/05/2007  
WRL Ref No: EGY/9/2006  
Sender Ref: FMD/KIH5806/Sha/06/Egy  
Date collected: 2006  
Date received by WRLFMD: 27/04/2007 Topotype: AFRICA  
Date received for sequencing: 02/05/2007 Genotype/strain: none designated  
Species: Not known Sequence filename: EGY06-09.SEQ  
Material used: CK2 BHK3 BTy1 Date sequence last updated: 08/05/2007  
Region sequenced: VP1 Total no. of comparisons: 849  
RT-PCR primers: A-1C562F/EUR-2B52R; Min. no. of nt for comparison: 300  
A-1C612F/EUR-2B52R Total turn-around time: 13 days  
No. of Nt determined: 639 Sequencing time: 8 days  
No. of ambiguities: 0  
Gene length: 639

Comments:

### Ten Most Closely Related Viruses

Pos.	Virus name	Filename	No. nt compared	No. nt matched	No. of ambiguities	% Identity	% Difference
1	A/EGY/6/2006	EGY06-06	639	639	0	100	0
2	A/EGY/7/2006	EGY06-07	639	639	0	100	0
3	A/EGY/5/2006 (EF208761)	EGY06-05	639	637	0	99.69	0.31
4	A/EGY/3/2006 (EF208759)	EGY06-03	639	636	0	99.53	0.47
5	A/EGY/4/2006 (EF208760)	EGY06-04	639	636	0	99.53	0.47
6	A/EGY/1/2006 (EF208757)	EGY06-01	639	634	0	99.22	0.78
7	A/EGY/2006 (EF159977)	EGY06-AB	639	634	0	99.22	0.78
8	A/EGY/2/2006 (EF208758)	EGY06-02	639	633	0	99.06	0.94
9	A/KEN/29/2005 (EF208773)	KEN05-29	639	619	0	96.87	3.13
10	A/KEN/15/98 (EF208774)	KEN98-15	639	603	0	94.37	5.63

### Relationships to Reference Virus Strains

Pos.	Virus name	Filename	No. nt compared	No. nt matched	No. of ambiguities	% Identity	% Difference
1	A22/IRQ/24/64 (AJ251474)	IRQ64-24	639	511	0	79.97	20.03
2	A/TAI/2/97 (EF208778)	TAI97-02	636	508	0	79.87	20.13
3	A24/Cruzeiro/BRA/55 (AJ251476)	BRA55--C	639	510	0	79.81	20.19
4	A/TAI/118/87* (EF208777)	TAI87-AD	636	506	0	79.56	20.44
5	A/IND/7/82 (1980)	IND82-07	639	508	0	79.5	20.5
6	A/SAU/41/91	SAU91-41	636	504	0	79.25	20.75
7	A/IRN/1/96 (EF208771)	IRN96-01	638	504	1	79	21
8	A/IRN/87	IRN87--M	634	498	2	78.55	21.45
9	A/SAU/23/86	SAU86-23	639	493	0	77.15	22.85
10	A/IRN/22/99 (EF208772)	IRN99-22	636	486	0	76.42	23.58

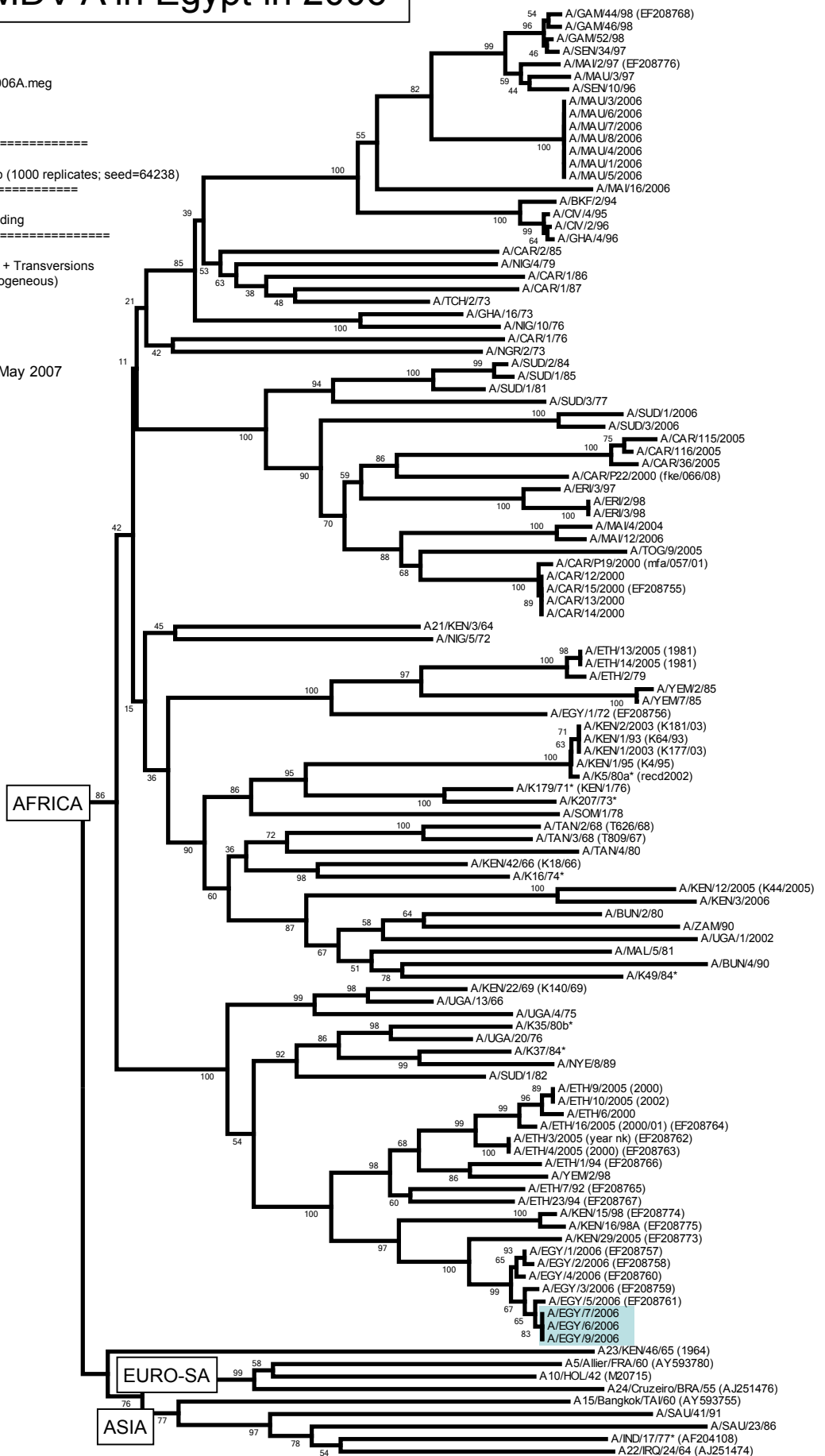
nt, nucleotides

\*, not a WRLFMD reference number

# Report on FMDV A in Egypt in 2006

Software: MEGA 3.1  
 No. of Taxa : 116  
 Data File : n:\levd\meg\db\fmdv\A\SUD2006A.meg  
 Data Title : SUD / ETH / EGY  
 Data Type : Nucleotide (Coding)  
 Analysis : Phylogeny reconstruction  
 Tree Inference : =====  
 Method : Neighbor-Joining  
 Phylogeny Test and options : Bootstrap (1000 replicates; seed=64238)  
 Include Sites : =====  
 Gaps/Missing Data : Pairwise Deletion  
 Codon Positions : 1st+2nd+3rd+Noncoding  
 Substitution Model : =====  
 Model : Nucleotide: p-distance  
 Substitutions to Include : d: Transitions + Transversions  
 Pattern among Lineages : Same (Homogeneous)  
 Rates among sites : Uniform rates  
 No. of Sites : 642  
 No Of Bootstrap Reps = 1000

N.J. Knowles & J. Wadsworth, 10 May 2007



0.02