

Serotype: SAT1	Report date: 14/02/2008
WRL Ref No: ETH/3/2007	
Sender Ref: ETH/11/07/SNNP	
Date collected: 10/11/2007	
Date received by WRLFMD: 02/02/2008	Topotype: Not defined
Date received for sequencing: 07/02/2008	Genotype/strain: Not defined
Species: Cattle	Sequence filename: ETH07-03.SEQ
Material used: BTy1	Date sequence last updated: 12/02/2008
Region sequenced: VP1	Total no. of comparisons: 281
RT-PCR primers: SAT1-1C559F/SAT-2B-208R; SAT1U-OS/SAT-2B-208R	Min. no. of nt for comparison: 300
No. of Nt determined: 663	Total turn-around time: 12 days
No. of ambiguities: 0	Sequencing time: 7 days
Gene length: 663	

Comments:

Ten Most Closely Related Viruses

Pos.	Virus name	Filename	No. nt compared	No. nt matched	No. of ambiguities	% Identity	% Difference
1	SAT1/NIG/5/76 [AF431723]	NIG76-AC	660	509	0	77.12	22.88
2	SAT1/NIG/6/76 [AF431716]	NIG76-AD	660	509	0	77.12	22.88
3	SAT1/NIG/8/76 [AF431724]	NIG76-AF	660	509	0	77.12	22.88
4	SAT1/NGR/5/76 [AF431720]	NGR76-AD	660	508	0	76.97	23.03
5	SAT1/NIG/14/76 [AF431725]	NIG76-AG	660	508	0	76.97	23.03
6	SAT1/NIG/24/75 [AF431714]	NIG75-AF	660	508	0	76.97	23.03
7	SAT1/NIG/25/75 [AF431715]	NIG75-AG	660	508	0	76.97	23.03
8	SAT1/NIG/11/75 [AF431711]	NIG75-AA	660	507	0	76.82	23.18
9	SAT1/NIG/15/75 [AF431710]	NIG75-AC	660	507	0	76.82	23.18
10	SAT1/NIG/17/75 [AF431712]	NIG75-AD	660	507	0	76.82	23.18

Relationships to Reference Virus Strains

Pos.	Virus name	Filename	No. nt compared	No. nt matched	No. of ambiguities	% Identity	% Difference
1	SAT1/ISR/4/62 (AY593844)	ISR62-04	663	474	0	71.49	28.51
2	SAT1/RV/11/37 (AY593839)	RHO37-11	663	470	0	70.89	29.11
3	SAT1/T155/71	TAN71155	663	469	0	70.74	29.26
4	SAT1/RHO/5/66 (AY593846)	RHO66-05	663	463	0	69.83	30.17
5	SAT1/BOT/1/68 (Z98203)	BOT68-B1	663	462	0	69.68	30.32
6	SAT1/SAR/9/81	SAR81-09	629	438	11	69.63	30.37
7	SAT1/SWA/40/61 (AY593843)	SWA61-40	663	461	0	69.53	30.47
8	SAT1/SA/13/61 (AY593842)	SAR61-13	663	459	0	69.23	30.77
9	SAT1/SA/2/58 (AY593841)	SAR58-02	663	459	0	69.23	30.77
10	SAT1/BEC/1/48 (AY593838)	BEC48-01	663	451	0	68.02	31.98

nt, nucleotides

*, not a WRLFMD reference number

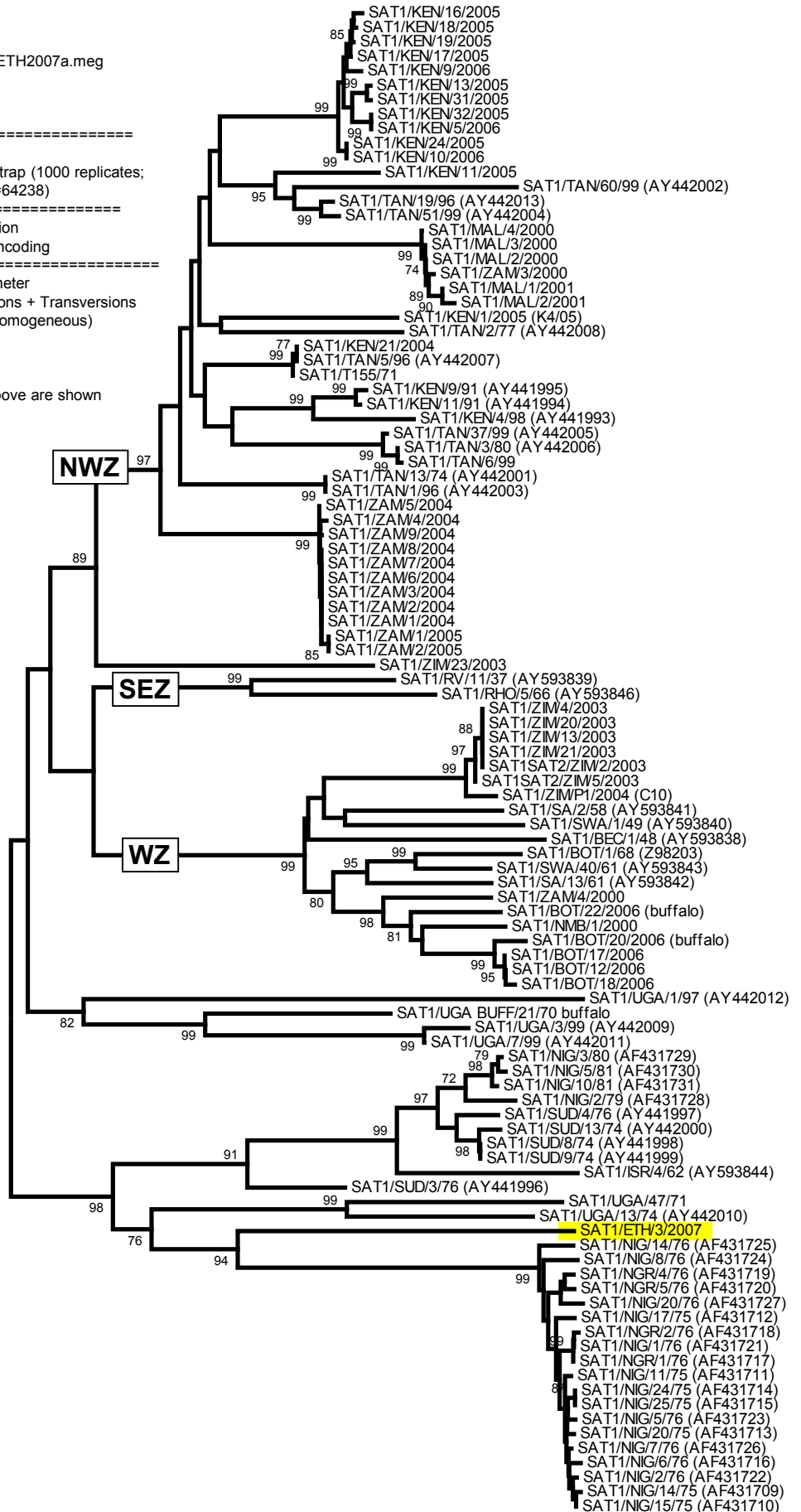
Report on FMDV SAT 1 from Ethiopia in 2007

Software: MEGA 4
 No. of Taxa : 104
 Data File : n:\levd\meg\db\fmdv\sat1\ETH2007a.meg
 Data Title : Ethiopia 2007
 Data Type : Nucleotide (Coding)
 Analysis : Phylogeny reconstruction
 Tree Inference : =====
 Method : Neighbor-Joining
 Phylogeny Test and options : Bootstrap (1000 replicates;
 seed=64238)

Include Sites : =====
 Gaps/Missing Data : Pairwise Deletion
 Codon Positions : 1st+2nd+3rd+Noncoding
 Substitution Model : =====
 Model : Nucleotide: Kimura 2-parameter
 Substitutions to Include : d: Transitions + Transversions
 Pattern among Lineages : Same (Homogeneous)
 Rates among sites : Uniform rates
 No. of Sites : 663
 No Of Bootstrap Reps = 1000
 Only bootstrap values of 70% and above are shown

*, not a WRLFMD Ref. No.

N.J. Knowles & J. Wadsworth,
 20 February 2008



0.05