

Serotype: O	Report date: 06/01/2009
WRL Ref No: ETH/13/2008	Reported by: N.J. Knowles
Sender Ref: 7	Checked by: D.P. King
Date collected: 19/10/2008	
Date received by WRLFMD: 25/11/2008	Topotype: EA-3
Date received for sequencing: 10/12/2008	Genotype/strain: none designated
Species: Cattle	Sequence filename: ETH08-13.SEQ
Material used: BTy1	Date sequence last updated: 05/01/2009
Region sequenced: VP1	Total no. of comparisons: 1836
RT-PCR primers: O-1C244F/EUR-2B52R;	Min. no. of nt for comparison: 300
O-1C272F/EUR-2B52R	Total turn-around time: 42 days
No. of Nt determined: 639	Sequencing time: 27 days
No. of ambiguities: 0	
Gene length: 639	

Comments:

Ten Most Closely Related Viruses

Pos.	Virus name	Filename	No. nt compared	No. nt matched	No. of ambiguities	% Identity	% Difference
1	O/ETH/15/2008	ETH08-15	639	639	0	100	0
2	O/ETH/19/2008	ETH08-19	639	639	0	100	0
3	O/ETH/20/2008	ETH08-20	639	636	0	99.53	0.47
4	O/ETH/21/2008	ETH08-21	639	636	0	99.53	0.47
5	O/ETH/23/2008	ETH08-23	639	634	0	99.22	0.78
6	O/ETH/25/2008	ETH08-25	639	634	0	99.22	0.78
7	O/ETH/24/2008	ETH08-24	639	633	0	99.06	0.94
8	O/ETH/26/2007	ETH07-26	639	630	0	98.59	1.41
9	O/ETH/27/2007	ETH07-27	639	630	0	98.59	1.41
10	O/ETH/28/2007	ETH07-28	639	630	0	98.59	1.41

Relationships to Reference Virus Strains

Pos.	Virus name	Filename	No. nt compared	No. nt matched	No. of ambiguities	% Identity	% Difference
1	O/IND/53/79 [AF292107]	IND79A53	639	559	0	87.48	12.52
2	O/TAW/2/99 (AJ294927)	TAW99-02	639	553	0	86.54	13.46
3	O/IND/R2/75* [AF204276]	IND75--A	639	551	0	86.23	13.77
4	O/ISR/2/88 (DQ164899)	ISR88-02	639	544	0	85.13	14.87
5	O/MOR/1/91	MOR91-01	639	544	0	85.13	14.87
6	O1/Manisa/TUR/69 (AJ251477)	TUR69--E	639	541	0	84.66	15.34
7	O/TAI/189/87* [TRRL]	TAI87-AC	639	535	0	83.72	16.28
8	O1/BFS 1860/UK/67 (J02185)	UKG67--A	639	509	0	79.66	20.34
9	O/HKN/6/83 (AJ294919)	HKN83-06	637	506	2	79.43	20.57
10	O/PHI/5/95 (DQ164946)	PHI95-05	639	502	0	78.56	21.44

nt, nucleotides

*, not a WRLFMD reference number

Serotype: O	Report date: 06/01/2009
WRL Ref No: ETH/15/2008	Reported by: N.J. Knowles
Sender Ref: 9	Checked by: D.P. King
Date collected: 19/10/2008	
Date received by WRLFMD: 25/11/2008	Topotype: EA-3
Date received for sequencing: 10/12/2008	Genotype/strain: none designated
Species: Cattle	Sequence filename: ETH08-15.SEQ
Material used: BTy1	Date sequence last updated: 05/01/2009
Region sequenced: VP1	Total no. of comparisons: 1836
RT-PCR primers: O-1C244F/EUR-2B52R; O-1C272F/EUR-2B52R	Min. no. of nt for comparison: 300
No. of Nt determined: 639	Total turn-around time: 42 days
No. of ambiguities: 0	Sequencing time: 27 days
Gene length: 639	

Comments:

Ten Most Closely Related Viruses

Pos.	Virus name	Filename	No. nt compared	No. nt matched	No. of ambiguities	% Identity	% Difference
1	O/ETH/13/2008	ETH08-13	639	639	0	100	0
2	O/ETH/19/2008	ETH08-19	639	639	0	100	0
3	O/ETH/20/2008	ETH08-20	639	636	0	99.53	0.47
4	O/ETH/21/2008	ETH08-21	639	636	0	99.53	0.47
5	O/ETH/23/2008	ETH08-23	639	634	0	99.22	0.78
6	O/ETH/25/2008	ETH08-25	639	634	0	99.22	0.78
7	O/ETH/24/2008	ETH08-24	639	633	0	99.06	0.94
8	O/ETH/26/2007	ETH07-26	639	630	0	98.59	1.41
9	O/ETH/27/2007	ETH07-27	639	630	0	98.59	1.41
10	O/ETH/28/2007	ETH07-28	639	630	0	98.59	1.41

Relationships to Reference Virus Strains

Pos.	Virus name	Filename	No. nt compared	No. nt matched	No. of ambiguities	% Identity	% Difference
1	O/IND/53/79 [AF292107]	IND79A53	639	559	0	87.48	12.52
2	O/TAW/2/99 (AJ294927)	TAW99-02	639	553	0	86.54	13.46
3	O/IND/R2/75* [AF204276]	IND75--A	639	551	0	86.23	13.77
4	O/ISR/2/88 (DQ164899)	ISR88-02	639	544	0	85.13	14.87
5	O/MOR/1/91	MOR91-01	639	544	0	85.13	14.87
6	O1/Manisa/TUR/69 (AJ251477)	TUR69--E	639	541	0	84.66	15.34
7	O/TAI/189/87* [TRRL]	TAI87-AC	639	535	0	83.72	16.28
8	O1/BFS 1860/UK/67 (J02185)	UKG67--A	639	509	0	79.66	20.34
9	O/HKN/6/83 (AJ294919)	HKN83-06	637	506	2	79.43	20.57
10	O/PHI/5/95 (DQ164946)	PHI95-05	639	502	0	78.56	21.44

nt, nucleotides

*, not a WRLFMD reference number

Serotype: O	Report date: 06/01/2009
WRL Ref No: ETH/19/2008	Reported by: N.J. Knowles
Sender Ref: 13	Checked by: D.P. King
Date collected: 19/10/2008	
Date received by WRLFMD: 25/11/2008	Topotype: EA-3
Date received for sequencing: 10/12/2008	Genotype/strain: none designated
Species: Cattle	Sequence filename: ETH08-19.SEQ
Material used: BTy1	Date sequence last updated: 05/01/2009
Region sequenced: VP1	Total no. of comparisons: 1836
RT-PCR primers: O-1C244F/EUR-2B52R;	Min. no. of nt for comparison: 300
O-1C272F/EUR-2B52R	Total turn-around time: 42 days
No. of Nt determined: 639	Sequencing time: 27 days
No. of ambiguities: 0	
Gene length: 639	

Comments:

Ten Most Closely Related Viruses

Pos.	Virus name	Filename	No. nt compared	No. nt matched	No. of ambiguities	% Identity	% Difference
1	O/ETH/13/2008	ETH08-13	639	639	0	100	0
2	O/ETH/15/2008	ETH08-15	639	639	0	100	0
3	O/ETH/20/2008	ETH08-20	639	636	0	99.53	0.47
4	O/ETH/21/2008	ETH08-21	639	636	0	99.53	0.47
5	O/ETH/23/2008	ETH08-23	639	634	0	99.22	0.78
6	O/ETH/25/2008	ETH08-25	639	634	0	99.22	0.78
7	O/ETH/24/2008	ETH08-24	639	633	0	99.06	0.94
8	O/ETH/26/2007	ETH07-26	639	630	0	98.59	1.41
9	O/ETH/27/2007	ETH07-27	639	630	0	98.59	1.41
10	O/ETH/28/2007	ETH07-28	639	630	0	98.59	1.41

Relationships to Reference Virus Strains

Pos.	Virus name	Filename	No. nt compared	No. nt matched	No. of ambiguities	% Identity	% Difference
1	O/IND/53/79 [AF292107]	IND79A53	639	559	0	87.48	12.52
2	O/TAW/2/99 (AJ294927)	TAW99-02	639	553	0	86.54	13.46
3	O/IND/R2/75* [AF204276]	IND75--A	639	551	0	86.23	13.77
4	O/ISR/2/88 (DQ164899)	ISR88-02	639	544	0	85.13	14.87
5	O/MOR/1/91	MOR91-01	639	544	0	85.13	14.87
6	O1/Manisa/TUR/69 (AJ251477)	TUR69--E	639	541	0	84.66	15.34
7	O/TAI/189/87* [TRRL]	TAI87-AC	639	535	0	83.72	16.28
8	O1/BFS 1860/UK/67 (J02185)	UKG67--A	639	509	0	79.66	20.34
9	O/HKN/6/83 (AJ294919)	HKN83-06	637	506	2	79.43	20.57
10	O/PHI/5/95 (DQ164946)	PHI95-05	639	502	0	78.56	21.44

nt, nucleotides

*, not a WRLFMD reference number

Serotype: O	Report date: 06/01/2009
WRL Ref No: ETH/20/2008	Reported by: N.J. Knowles
Sender Ref: 14	Checked by: D.P. King
Date collected: 19/10/2008	
Date received by WRLFMD: 25/11/2008	Topotype: EA-3
Date received for sequencing: 10/12/2008	Genotype/strain: none designated
Species: Cattle	Sequence filename: ETH08-20.SEQ
Material used: BTy1	Date sequence last updated: 05/01/2009
Region sequenced: VP1	Total no. of comparisons: 1836
RT-PCR primers: O-1C244F/EUR-2B52R;	Min. no. of nt for comparison: 300
O-1C272F/EUR-2B52R	Total turn-around time: 42 days
No. of Nt determined: 639	Sequencing time: 27 days
No. of ambiguities: 0	
Gene length: 639	

Comments:

Ten Most Closely Related Viruses

Pos.	Virus name	Filename	No. nt compared	No. nt matched	No. of ambiguities	% Identity	% Difference
1	O/ETH/21/2008	ETH08-21	639	639	0	100	0
2	O/ETH/13/2008	ETH08-13	639	636	0	99.53	0.47
3	O/ETH/15/2008	ETH08-15	639	636	0	99.53	0.47
4	O/ETH/19/2008	ETH08-19	639	636	0	99.53	0.47
5	O/ETH/23/2008	ETH08-23	639	633	0	99.06	0.94
6	O/ETH/25/2008	ETH08-25	639	633	0	99.06	0.94
7	O/ETH/24/2008	ETH08-24	639	632	0	98.9	1.1
8	O/ETH/26/2007	ETH07-26	639	629	0	98.44	1.56
9	O/ETH/27/2007	ETH07-27	639	629	0	98.44	1.56
10	O/ETH/28/2007	ETH07-28	639	629	0	98.44	1.56

Relationships to Reference Virus Strains

Pos.	Virus name	Filename	No. nt compared	No. nt matched	No. of ambiguities	% Identity	% Difference
1	O/IND/53/79 [AF292107]	IND79A53	639	556	0	87.01	12.99
2	O/TAW/2/99 (AJ294927)	TAW99-02	639	550	0	86.07	13.93
3	O/IND/R2/75* [AF204276]	IND75--A	639	549	0	85.92	14.08
4	O/ISR/2/88 (DQ164899)	ISR88-02	639	544	0	85.13	14.87
5	O/MOR/1/91	MOR91-01	639	542	0	84.82	15.18
6	O1/Manisa/TUR/69 (AJ251477)	TUR69--E	639	539	0	84.35	15.65
7	O/TAI/189/87* [TRRL]	TAI87-AC	639	534	0	83.57	16.43
8	O1/BFS 1860/UK/67 (J02185)	UKG67--A	639	507	0	79.34	20.66
9	O/HKN/6/83 (AJ294919)	HKN83-06	637	505	2	79.28	20.72
10	O/PHI/5/95 (DQ164946)	PHI95-05	639	501	0	78.4	21.6

nt, nucleotides

*, not a WRLFMD reference number

Serotype: O	Report date: 06/01/2009
WRL Ref No: ETH/21/2008	Reported by: N.J. Knowles
Sender Ref: 15	Checked by: D.P. King
Date collected: 19/10/2008	
Date received by WRLFMD: 25/11/2008	Topotype: EA-3
Date received for sequencing: 10/12/2008	Genotype/strain: none designated
Species: Cattle	Sequence filename: ETH08-21.SEQ
Material used: BTy1	Date sequence last updated: 05/01/2009
Region sequenced: VP1	Total no. of comparisons: 1836
RT-PCR primers: O-1C244F/EUR-2B52R;	Min. no. of nt for comparison: 300
O-1C272F/EUR-2B52R	Total turn-around time: 42 days
No. of Nt determined: 639	Sequencing time: 27 days
No. of ambiguities: 0	
Gene length: 639	

Comments:

Ten Most Closely Related Viruses

Pos.	Virus name	Filename	No. nt compared	No. nt matched	No. of ambiguities	% Identity	% Difference
1	O/ETH/20/2008	ETH08-20	639	639	0	100	0
2	O/ETH/13/2008	ETH08-13	639	636	0	99.53	0.47
3	O/ETH/15/2008	ETH08-15	639	636	0	99.53	0.47
4	O/ETH/19/2008	ETH08-19	639	636	0	99.53	0.47
5	O/ETH/23/2008	ETH08-23	639	633	0	99.06	0.94
6	O/ETH/25/2008	ETH08-25	639	633	0	99.06	0.94
7	O/ETH/24/2008	ETH08-24	639	632	0	98.9	1.1
8	O/ETH/26/2007	ETH07-26	639	629	0	98.44	1.56
9	O/ETH/27/2007	ETH07-27	639	629	0	98.44	1.56
10	O/ETH/28/2007	ETH07-28	639	629	0	98.44	1.56

Relationships to Reference Virus Strains

Pos.	Virus name	Filename	No. nt compared	No. nt matched	No. of ambiguities	% Identity	% Difference
1	O/IND/53/79 [AF292107]	IND79A53	639	556	0	87.01	12.99
2	O/TAW/2/99 (AJ294927)	TAW99-02	639	550	0	86.07	13.93
3	O/IND/R2/75* [AF204276]	IND75--A	639	549	0	85.92	14.08
4	O/ISR/2/88 (DQ164899)	ISR88-02	639	544	0	85.13	14.87
5	O/MOR/1/91	MOR91-01	639	542	0	84.82	15.18
6	O1/Manisa/TUR/69 (AJ251477)	TUR69--E	639	539	0	84.35	15.65
7	O/TAI/189/87* [TRRL]	TAI87-AC	639	534	0	83.57	16.43
8	O1/BFS 1860/UK/67 (J02185)	UKG67--A	639	507	0	79.34	20.66
9	O/HKN/6/83 (AJ294919)	HKN83-06	637	505	2	79.28	20.72
10	O/PHI/5/95 (DQ164946)	PHI95-05	639	501	0	78.4	21.6

nt, nucleotides

*, not a WRLFMD reference number

Serotype: O	Report date: 06/01/2009
WRL Ref No: ETH/23/2008	Reported by: N.J. Knowles
Sender Ref: 4	Checked by: D.P. King
Date collected: 21/10/2008	
Date received by WRLFMD: 25/11/2008	Topotype: EA-3
Date received for sequencing: 10/12/2008	Genotype/strain: none designated
Species: Cattle	Sequence filename: ETH08-23.SEQ
Material used: BTy1	Date sequence last updated: 05/01/2009
Region sequenced: VP1	Total no. of comparisons: 1836
RT-PCR primers: O-1C244F/EUR-2B52R;	Min. no. of nt for comparison: 300
O-1C272F/EUR-2B52R	Total turn-around time: 42 days
No. of Nt determined: 639	Sequencing time: 27 days
No. of ambiguities: 0	
Gene length: 639	

Comments:

Ten Most Closely Related Viruses

Pos.	Virus name	Filename	No. nt compared	No. nt matched	No. of ambiguities	% Identity	% Difference
1	O/ETH/25/2008	ETH08-25	639	639	0	100	0
2	O/ETH/24/2008	ETH08-24	639	638	0	99.84	0.16
3	O/ETH/13/2008	ETH08-13	639	634	0	99.22	0.78
4	O/ETH/15/2008	ETH08-15	639	634	0	99.22	0.78
5	O/ETH/19/2008	ETH08-19	639	634	0	99.22	0.78
6	O/ETH/20/2008	ETH08-20	639	633	0	99.06	0.94
7	O/ETH/21/2008	ETH08-21	639	633	0	99.06	0.94
8	O/ETH/26/2007	ETH07-26	639	633	0	99.06	0.94
9	O/ETH/27/2007	ETH07-27	639	633	0	99.06	0.94
10	O/ETH/28/2007	ETH07-28	639	633	0	99.06	0.94

Relationships to Reference Virus Strains

Pos.	Virus name	Filename	No. nt compared	No. nt matched	No. of ambiguities	% Identity	% Difference
1	O/IND/53/79 [AF292107]	IND79A53	639	559	0	87.48	12.52
2	O/TAW/2/99 (AJ294927)	TAW99-02	639	552	0	86.38	13.62
3	O/IND/R2/75* [AF204276]	IND75--A	639	551	0	86.23	13.77
4	O/ISR/2/88 (DQ164899)	ISR88-02	639	546	0	85.45	14.55
5	O/MOR/1/91	MOR91-01	639	544	0	85.13	14.87
6	O1/Manisa/TUR/69 (AJ251477)	TUR69--E	639	541	0	84.66	15.34
7	O/TAI/189/87* [TRRL]	TAI87-AC	639	536	0	83.88	16.12
8	O1/BFS 1860/UK/67 (J02185)	UKG67--A	639	510	0	79.81	20.19
9	O/HKN/6/83 (AJ294919)	HKN83-06	637	504	2	79.12	20.88
10	O/PHI/5/95 (DQ164946)	PHI95-05	639	500	0	78.25	21.75

nt, nucleotides

*, not a WRLFMD reference number

Serotype: O	Report date: 06/01/2009
WRL Ref No: ETH/24/2008	Reported by: N.J. Knowles
Sender Ref: 5	Checked by: D.P. King
Date collected: 21/10/2008	
Date received by WRLFMD: 25/11/2008	Topotype: EA-3
Date received for sequencing: 10/12/2008	Genotype/strain: none designated
Species: Cattle	Sequence filename: ETH08-24.SEQ
Material used: BTy1	Date sequence last updated: 05/01/2009
Region sequenced: VP1	Total no. of comparisons: 1836
RT-PCR primers: O-1C244F/EUR-2B52R;	Min. no. of nt for comparison: 300
O-1C272F/EUR-2B52R	Total turn-around time: 42 days
No. of Nt determined: 639	Sequencing time: 27 days
No. of ambiguities: 0	
Gene length: 639	

Comments:

Ten Most Closely Related Viruses

Pos.	Virus name	Filename	No. nt compared	No. nt matched	No. of ambiguities	% Identity	% Difference
1	O/ETH/23/2008	ETH08-23	639	638	0	99.84	0.16
2	O/ETH/25/2008	ETH08-25	639	638	0	99.84	0.16
3	O/ETH/13/2008	ETH08-13	639	633	0	99.06	0.94
4	O/ETH/15/2008	ETH08-15	639	633	0	99.06	0.94
5	O/ETH/19/2008	ETH08-19	639	633	0	99.06	0.94
6	O/ETH/20/2008	ETH08-20	639	632	0	98.9	1.1
7	O/ETH/21/2008	ETH08-21	639	632	0	98.9	1.1
8	O/ETH/26/2007	ETH07-26	639	632	0	98.9	1.1
9	O/ETH/27/2007	ETH07-27	639	632	0	98.9	1.1
10	O/ETH/28/2007	ETH07-28	639	632	0	98.9	1.1

Relationships to Reference Virus Strains

Pos.	Virus name	Filename	No. nt compared	No. nt matched	No. of ambiguities	% Identity	% Difference
1	O/IND/53/79 [AF292107]	IND79A53	639	558	0	87.32	12.68
2	O/TAW/2/99 (AJ294927)	TAW99-02	639	551	0	86.23	13.77
3	O/IND/R2/75* [AF204276]	IND75--A	639	550	0	86.07	13.93
4	O/ISR/2/88 (DQ164899)	ISR88-02	639	545	0	85.29	14.71
5	O/MOR/1/91	MOR91-01	639	543	0	84.98	15.02
6	O1/Manisa/TUR/69 (AJ251477)	TUR69--E	639	540	0	84.51	15.49
7	O/TAI/189/87* [TRRL]	TAI87-AC	639	535	0	83.72	16.28
8	O1/BFS 1860/UK/67 (J02185)	UKG67--A	639	509	0	79.66	20.34
9	O/HKN/6/83 (AJ294919)	HKN83-06	637	503	2	78.96	21.04
10	O/PHI/5/95 (DQ164946)	PHI95-05	639	499	0	78.09	21.91

nt, nucleotides

*, not a WRLFMD reference number

Serotype: O	Report date: 06/01/2009
WRL Ref No: ETH/25/2008	Reported by: N.J. Knowles
Sender Ref: 6	Checked by: D.P. King
Date collected: 21/10/2008	
Date received by WRLFMD: 25/11/2008	Topotype: EA-3
Date received for sequencing: 10/12/2008	Genotype/strain: none designated
Species: Cattle	Sequence filename: ETH08-25.SEQ
Material used: BTy1	Date sequence last updated: 05/01/2009
Region sequenced: VP1	Total no. of comparisons: 1836
RT-PCR primers: O-1C244F/EUR-2B52R; O-1C272F/EUR-2B52R	Min. no. of nt for comparison: 300
No. of Nt determined: 639	Total turn-around time: 42 days
No. of ambiguities: 0	Sequencing time: 27 days
Gene length: 639	

Comments:

Ten Most Closely Related Viruses

Pos.	Virus name	Filename	No. nt compared	No. nt matched	No. of ambiguities	% Identity	% Difference
1	O/ETH/23/2008	ETH08-23	639	639	0	100	0
2	O/ETH/24/2008	ETH08-24	639	638	0	99.84	0.16
3	O/ETH/13/2008	ETH08-13	639	634	0	99.22	0.78
4	O/ETH/15/2008	ETH08-15	639	634	0	99.22	0.78
5	O/ETH/19/2008	ETH08-19	639	634	0	99.22	0.78
6	O/ETH/20/2008	ETH08-20	639	633	0	99.06	0.94
7	O/ETH/21/2008	ETH08-21	639	633	0	99.06	0.94
8	O/ETH/26/2007	ETH07-26	639	633	0	99.06	0.94
9	O/ETH/27/2007	ETH07-27	639	633	0	99.06	0.94
10	O/ETH/28/2007	ETH07-28	639	633	0	99.06	0.94

Relationships to Reference Virus Strains

Pos.	Virus name	Filename	No. nt compared	No. nt matched	No. of ambiguities	% Identity	% Difference
1	O/IND/53/79 [AF292107]	IND79A53	639	559	0	87.48	12.52
2	O/TAW/2/99 (AJ294927)	TAW99-02	639	552	0	86.38	13.62
3	O/IND/R2/75* [AF204276]	IND75--A	639	551	0	86.23	13.77
4	O/ISR/2/88 (DQ164899)	ISR88-02	639	546	0	85.45	14.55
5	O/MOR/1/91	MOR91-01	639	544	0	85.13	14.87
6	O1/Manisa/TUR/69 (AJ251477)	TUR69--E	639	541	0	84.66	15.34
7	O/TAI/189/87* [TRRL]	TAI87-AC	639	536	0	83.88	16.12
8	O1/BFS 1860/UK/67 (J02185)	UKG67--A	639	510	0	79.81	20.19
9	O/HKN/6/83 (AJ294919)	HKN83-06	637	504	2	79.12	20.88
10	O/PHI/5/95 (DQ164946)	PHI95-05	639	500	0	78.25	21.75

nt, nucleotides

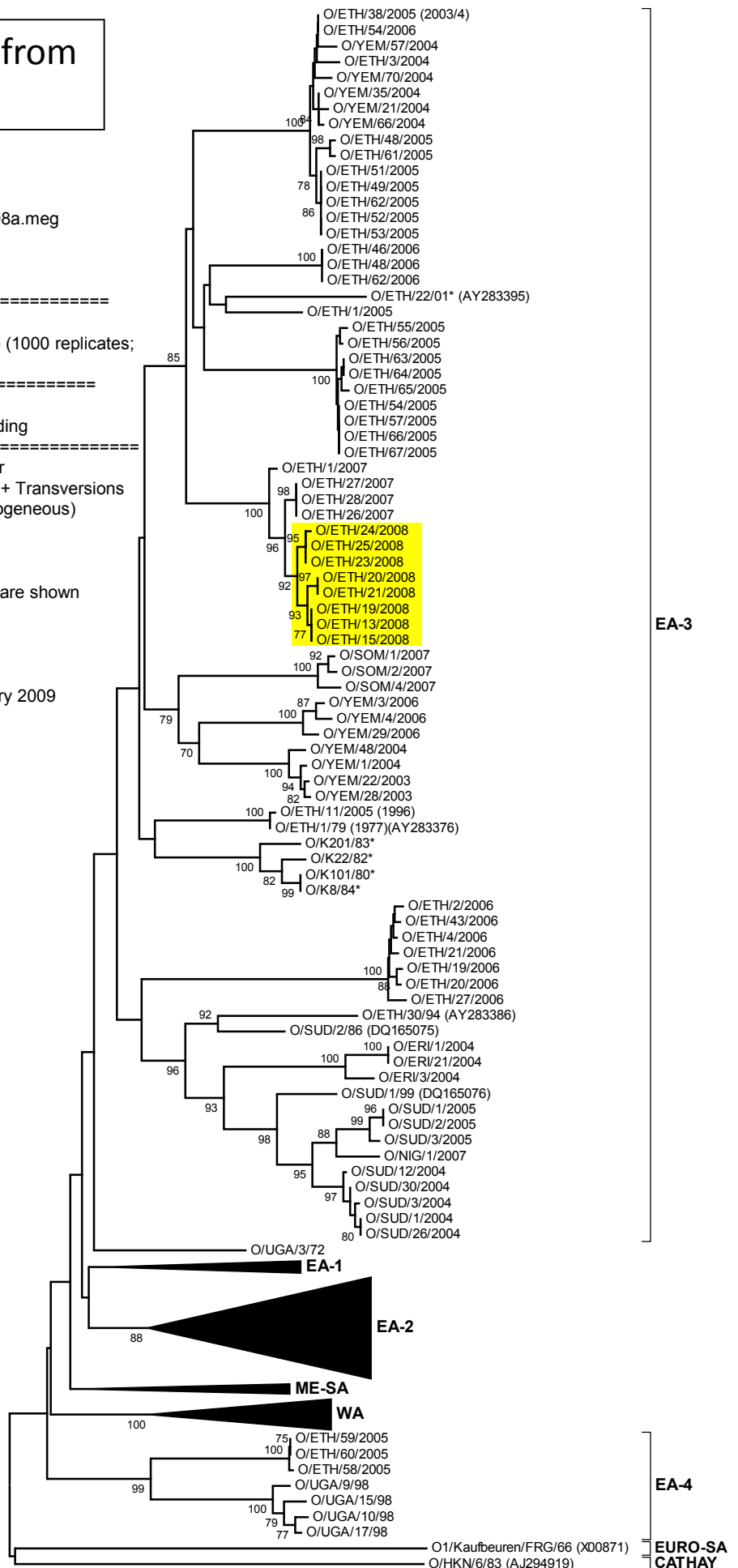
*, not a WRLFMD reference number

Report on FMDV O from Ethiopia in 2008

Software: MEGA 4.0
 No. of Taxa : 164
 Data File : n:\evd\meg\db\fmdv\o\ETH2008a.meg
 Data Title : Ethiopia 2008
 Data Type : Nucleotide (Coding)
 Analysis : Phylogeny reconstruction
 Tree Inference : =====
 ->Method : Neighbor-Joining
 ->Phylogeny Test and options : Bootstrap (1000 replicates;
 seed=64238)
 Include Sites : =====
 ->Gaps/Missing Data : Pairwise Deletion
 ->Codon Positions : 1st+2nd+3rd+Noncoding
 Substitution Model : =====
 ->Model : Nucleotide: Kimura 2-parameter
 ->Substitutions to Include : d: Transitions + Transversions
 ->Pattern among Lineages : Same (Homogeneous)
 ->Rates among sites : Uniform rates
 No. of Sites : 642
 No Of Bootstrap Reps = 1000
 Only bootstrap values of 70% and above are shown

*, not a WRLFMD Ref. No.

N.J. Knowles and J. Wadsworth, 6 January 2009



EA-3

EA-4

EURO-SA
CATHAY

0.02