

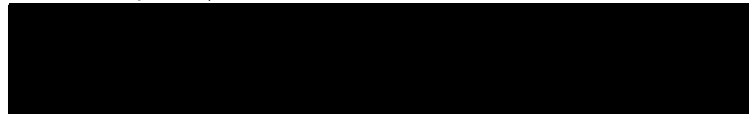


**INSTITUTE FOR ANIMAL HEALTH**  
Director: Professor John Fazakerley BSc, MBA, PhD, FRCPath  
**PIRBRIGHT LABORATORY**  
Ash Road,  
Pirbright,  
Surrey,  
GU24 0NF  
Intn Tel: 00 44 1483 232441  
Tel: 01483 232441 Fax: 01483 232621

## **FMD Genotyping Report**

**Lab Reference WRL Batch Number:** WRLFMD/2011/00042

**Sender Details:**

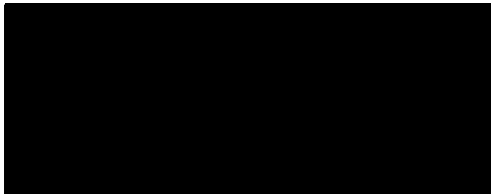


**Date Received:** 29<sup>th</sup> September 2011  
**Country of Origin:** Democratic Republic of Congo  
**Date Reported:** 18<sup>th</sup> October 2011

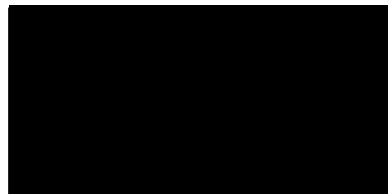
Dear Dr. Mulinda,

Sequencing work has now been completed in respect of the samples you submitted and the details are as attached. Please note that all of our phylogenetic trees can be accessed via the internet at: <http://www.wrlfmd.org/>

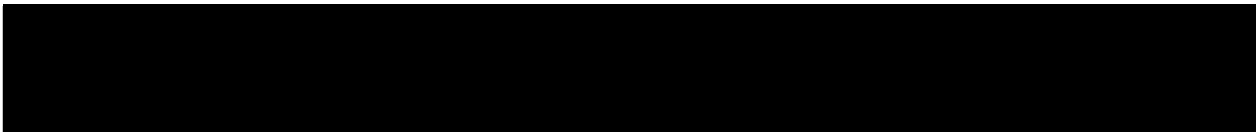
**Results Approved By:**



**Official Stamp:**



**Date:** 25 / 10 / 2011



A UKAS accredited testing laboratory No. 4025.

To help us improve the quality of our service, please send any suggestions or requests to the Reference Laboratory by fax (+44 (0) 1483 232621 or email: [elizabeth.wilson@bbsrc.ac.uk](mailto:elizabeth.wilson@bbsrc.ac.uk)). IAH actively seeks and appreciates feedback, if you would like to offer feedback please complete the WRLFMD survey here: <http://www.surveymonkey.com/s/WRLFMD>

# FAO World Reference Laboratory for Foot-and-Mouth Disease (WRLFMD)

## Genotyping Report

Report Date for this Batch: 25 October 2011

FMDV type A

Country: Democratic Republic of the Congo

Period: 2011

No. of samples: 7

BATCH: WRLFMD/2011/00042



The contents of this report are copyright and should not be reproduced without permission

© Institute for Animal Health

# FAO World Reference Laboratory for FMD Genotyping Report

IAH-P-EP-MEG-FOR-005-3

Page 1 of 1

Serotype: A	Report date: 25/10/2011
WRLFMD Ref No: COD/2/2011	Reported by: N.J. Knowles
Batch No: WRLFMD/2011/00042	Checked by: D.P. King
Sender Ref: KAL 22	
Location: Kala, Sud-Kivu, Plaine De La Ruzizi, Dem.Rep.Congo	Topotype: AFRICA
Date collected: 01/02/2011	Genotype/strain: G-I
Date received by WRLFMD: 29/09/2011	Sequence filename: COD11-02.SEQ
Date received for sequencing: 18/10/2011	Date sequence last updated: 19/10/2011
Species: Cattle	No. of Nt determined: 639
Material used: BTy1	No. of ambiguities: 0
Region sequenced: VP1	Gene length: 639
RT-PCR primers: A-1C562F/EUR-2B52R A-1C612F/EUR-2B52R	Total no. of comparisons: 1353
	Min. no. of nt for comparison: 600
	Total turn-around time: 26 days
	Sequencing time: 7 days
Comments:	

<b>Most Closely Related Viruses</b>									
Pos.	Virus name	Filename	No. nt comp.	No. nt match.	No. of ambig.	% Id.	% Diff.	Topotype	Strain
1	A/COD/10/2011	COD11-10	639	637	0	99.69	0.31	AFRICA	G-I
2	A/COD/11/2011	COD11-11	639	637	0	99.69	0.31	AFRICA	G-I
3	A/COD/12/2011	COD11-12	639	637	0	99.69	0.31	AFRICA	G-I
4	A/COD/8/2011	COD11-08	639	637	0	99.69	0.31	AFRICA	G-I
5	A/COD/9/2011	COD11-09	639	637	0	99.69	0.31	AFRICA	G-I
6	A/COD/3/2011	COD11-03	639	636	0	99.53	0.47	AFRICA	G-I
7	A/KEN/28/2008	KEN08-28	639	625	0	97.81	2.19	AFRICA	G-I
8	A/TAN/47/2009	TAN09-47	639	620	0	97.03	2.97	AFRICA	G-I
9	A/KEN/22/2009	KEN09-22	639	619	0	96.87	3.13	AFRICA	G-I
10	A/TAN/42/2009	TAN09-42	639	619	0	96.87	3.13	AFRICA	G-I
<b>Most Closely Related Reference Viruses</b>									
(see <a href="http://www.wrlfmd.org/fmd_genotyping/prototypes.htm">http://www.wrlfmd.org/fmd_genotyping/prototypes.htm</a> )									
Pos.	Virus name	Filename	No. nt comp.	No. nt match.	No. of ambig.	% Id.	% Diff.	Topotype	Strain
1	A/KEN/42/66 (K18/66)	KEN66-42	639	542	0	84.82	15.18	AFRICA	G-I
2	A/NGR/2/73	NGR73-02	639	526	0	82.32	17.68	AFRICA	G-V
3	A21/Lumbwa/KEN/64 (AY593761)	KEN64-AA	639	524	0	82.00	18.00	AFRICA	G-III
4	A12/UK/119/32 (M10975)	UKG32119	639	523	0	81.85	18.15	EURO-SA	A <sub>12</sub>
5	A/UGA/13/66	UGA66-13	639	521	0	81.53	18.47	AFRICA	G-VII
6	A/EGY/1/72 (EF208756)	EGY72-01	639	520	0	81.38	18.62	AFRICA	G-II
7	A/GHA/16/73	GHA73-16	636	517	0	81.29	18.71	AFRICA	G-VI
8	A5/Allier/FRA/60 (AY593780)	FRA60--F	636	513	0	80.66	19.34	EURO-SA	A <sub>5</sub>
9	A/SUD/3/77 (GU566064)	SUD77-03	639	515	0	80.59	19.41	AFRICA	G-IV
10	A22/IRQ/64 (AY593763)	IRQ64--A	639	511	0	79.97	20.03	ASIA	A22

nt, nucleotides

\*, not a WRLFMD reference number

Assembled with Report Generator v4.1

© Institute for Animal Health (not to be reproduced without permission)

# FAO World Reference Laboratory for FMD Genotyping Report

IAH-P-EP-MEG-FOR-005-3

Page 1 of 1

Serotype: A WRLFMD Ref No: COD/3/2011 Batch No: WRLFMD/2011/00042 Sender Ref: KAV 29 Location: Kavunge, Sud-Kivu, Plaine De La Ruzizi, Dem.Rep.Congo Date collected: 02/02/2011 Date received by WRLFMD: 29/09/2011 Date received for sequencing: 18/10/2011 Species: Cattle Material used: BTy1 Region sequenced: VP1 RT-PCR primers: A-1C562F/EUR-2B52R A-1C612F/EUR-2B52R	Report date: 25/10/2011 Reported by: N.J. Knowles Checked by: D.P. King Topotype: AFRICA Genotype/strain: G-I Sequence filename: COD11-03.SEQ Date sequence last updated: 19/10/2011 No. of Nt determined: 639 No. of ambiguities: 0 Gene length: 639 Total no. of comparisons: 1353 Min. no. of nt for comparison: 600 Total turn-around time: 26 days Sequencing time: 7 days
Comments:	

Most Closely Related Viruses									
Pos.	Virus name	Filename	No. nt comp.	No. nt match.	No. of ambig.	% Id.	% Diff.	Topotype	Strain
1	A/COD/10/2011	COD11-10	639	638	0	99.84	0.16	AFRICA	G-I
2	A/COD/11/2011	COD11-11	639	638	0	99.84	0.16	AFRICA	G-I
3	A/COD/12/2011	COD11-12	639	638	0	99.84	0.16	AFRICA	G-I
4	A/COD/8/2011	COD11-08	639	638	0	99.84	0.16	AFRICA	G-I
5	A/COD/9/2011	COD11-09	639	638	0	99.84	0.16	AFRICA	G-I
6	A/COD/2/2011	COD11-02	639	636	0	99.53	0.47	AFRICA	G-I
7	A/KEN/28/2008	KEN08-28	639	626	0	97.97	2.03	AFRICA	G-I
8	A/TAN/47/2009	TAN09-47	639	621	0	97.18	2.82	AFRICA	G-I
9	A/KEN/22/2009	KEN09-22	639	620	0	97.03	2.97	AFRICA	G-I
10	A/TAN/42/2009	TAN09-42	639	620	0	97.03	2.97	AFRICA	G-I
Most Closely Related Reference Viruses									
(see <a href="http://www.wrlfmd.org/fmd_genotyping/prototypes.htm">http://www.wrlfmd.org/fmd_genotyping/prototypes.htm</a> )									
Pos.	Virus name	Filename	No. nt comp.	No. nt match.	No. of ambig.	% Id.	% Diff.	Topotype	Strain
1	A/KEN/42/66 (K18/66)	KEN66-42	639	543	0	84.98	15.02	AFRICA	G-I
2	A/NGR/2/73	NGR73-02	639	527	0	82.47	17.53	AFRICA	G-V
3	A21/Lumbwa/KEN/64 (AY593761)	KEN64-AA	639	525	0	82.16	17.84	AFRICA	G-III
4	A/UGA/13/66	UGA66-13	639	522	0	81.69	18.31	AFRICA	G-VII
5	A12/UK/119/32 (M10975)	UKG32119	639	522	0	81.69	18.31	EURO-SA	A <sub>12</sub>
6	A/EGY/1/72 (EF208756)	EGY72-01	639	521	0	81.53	18.47	AFRICA	G-II
7	A/GHA/16/73	GHA73-16	636	518	0	81.45	18.55	AFRICA	G-VI
8	A/SUD/3/77 (GU566064)	SUD77-03	639	516	0	80.75	19.25	AFRICA	G-IV
9	A5/Allier/FRA/60 (AY593780)	FRA60--F	636	512	0	80.50	19.50	EURO-SA	A <sub>5</sub>
10	A/IRN/22/99 (EF208772)	IRN99-22	636	509	0	80.03	19.97	ASIA	Iran-99

nt, nucleotides

\*, not a WRLFMD reference number

Assembled with Report Generator v4.1

© Institute for Animal Health (not to be reproduced without permission)

# FAO World Reference Laboratory for FMD Genotyping Report

IAH-P-EP-MEG-FOR-005-3

Page 1 of 1

Serotype: A WRLFMD Ref No: COD/8/2011 Batch No: WRLFMD/2011/00042 Sender Ref: IKAV 52 Location: Kavunge, Sud-Kivu, Plaine de La Ruzizi, Dem.Rep.Congo Date collected: 02/02/2011 Date received by WRLFMD: 29/09/2011 Date received for sequencing: 18/10/2011 Species: Cattle Material used: BTy1 Region sequenced: VP1 RT-PCR primers: A-1C562F/EUR-2B52R A-1C612F/EUR-2B52R	Report date: 25/10/2011 Reported by: N.J. Knowles Checked by: D.P. King Topotype: AFRICA Genotype/strain: G-I Sequence filename: COD11-08.SEQ Date sequence last updated: 19/10/2011 No. of Nt determined: 639 No. of ambiguities: 0 Gene length: 639 Total no. of comparisons: 1353 Min. no. of nt for comparison: 600 Total turn-around time: 26 days Sequencing time: 7 days
Comments:	

<b>Most Closely Related Viruses</b>									
Pos.	Virus name	Filename	No. nt comp.	No. nt match.	No. of ambig.	% Id.	% Diff.	Topotype	Strain
1	A/COD/10/2011	COD11-10	639	639	0	100.00	0.00	AFRICA	G-I
2	A/COD/11/2011	COD11-11	639	639	0	100.00	0.00	AFRICA	G-I
3	A/COD/12/2011	COD11-12	639	639	0	100.00	0.00	AFRICA	G-I
4	A/COD/9/2011	COD11-09	639	639	0	100.00	0.00	AFRICA	G-I
5	A/COD/3/2011	COD11-03	639	638	0	99.84	0.16	AFRICA	G-I
6	A/COD/2/2011	COD11-02	639	637	0	99.69	0.31	AFRICA	G-I
7	A/KEN/28/2008	KEN08-28	639	627	0	98.12	1.88	AFRICA	G-I
8	A/TAN/47/2009	TAN09-47	639	622	0	97.34	2.66	AFRICA	G-I
9	A/KEN/22/2009	KEN09-22	639	621	0	97.18	2.82	AFRICA	G-I
10	A/TAN/42/2009	TAN09-42	639	621	0	97.18	2.82	AFRICA	G-I
<b>Most Closely Related Reference Viruses</b>									
(see <a href="http://www.wrlfmd.org/fmd_genotyping/prototypes.htm">http://www.wrlfmd.org/fmd_genotyping/prototypes.htm</a> )									
Pos.	Virus name	Filename	No. nt comp.	No. nt match.	No. of ambig.	% Id.	% Diff.	Topotype	Strain
1	A/KEN/42/66 (K18/66)	KEN66-42	639	544	0	85.13	14.87	AFRICA	G-I
2	A/NGR/2/73	NGR73-02	639	528	0	82.63	17.37	AFRICA	G-V
3	A21/Lumbwa/KEN/64 (AY593761)	KEN64-AA	639	526	0	82.32	17.68	AFRICA	G-III
4	A/UGA/13/66	UGA66-13	639	523	0	81.85	18.15	AFRICA	G-VII
5	A12/UK/119/32 (M10975)	UKG32119	639	523	0	81.85	18.15	EURO-SA	A <sub>12</sub>
6	A/EGY/1/72 (EF208756)	EGY72-01	639	522	0	81.69	18.31	AFRICA	G-II
7	A/GHA/16/73	GHA73-16	636	519	0	81.60	18.40	AFRICA	G-VI
8	A/SUD/3/77 (GU566064)	SUD77-03	639	517	0	80.91	19.09	AFRICA	G-IV
9	A5/Allier/FRA/60 (AY593780)	FRA60--F	636	513	0	80.66	19.34	EURO-SA	A <sub>5</sub>
10	A23/Kitale/KEN/64 (AY593766)	KEN64-AB	639	512	0	80.13	19.87	AFRICA	G-VIII

nt, nucleotides

\*, not a WRLFMD reference number

Assembled with Report Generator v4.1

© Institute for Animal Health (not to be reproduced without permission)

# FAO World Reference Laboratory for FMD Genotyping Report

IAH-P-EP-MEG-FOR-005-3

Page 1 of 1

Serotype: A WRLFMD Ref No: COD/9/2011 Batch No: WRLFMD/2011/00042 Sender Ref: KIT 83 Location: Kitemesho, Sud -Kivo, Plaine De La Ruzizi, Dem.Rep.Congo Date collected: 03/02/2011 Date received by WRLFMD: 29/09/2011 Date received for sequencing: 18/10/2011 Species: Cattle Material used: BTy1 Region sequenced: VP1 RT-PCR primers: A-1C562F/EUR-2B52R A-1C612F/EUR-2B52R	Report date: 25/10/2011 Reported by: N.J. Knowles Checked by: D.P. King Topotype: AFRICA Genotype/strain: G-I Sequence filename: COD11-09.SEQ Date sequence last updated: 19/10/2011 No. of Nt determined: 639 No. of ambiguities: 0 Gene length: 639 Total no. of comparisons: 1353 Min. no. of nt for comparison: 600 Total turn-around time: 26 days Sequencing time: 7 days
Comments:	

<b>Most Closely Related Viruses</b>									
Pos.	Virus name	Filename	No. nt comp.	No. nt match.	No. of ambig.	% Id.	% Diff.	Topotype	Strain
1	A/COD/10/2011	COD11-10	639	639	0	100.00	0.00	AFRICA	G-I
2	A/COD/11/2011	COD11-11	639	639	0	100.00	0.00	AFRICA	G-I
3	A/COD/12/2011	COD11-12	639	639	0	100.00	0.00	AFRICA	G-I
4	A/COD/8/2011	COD11-08	639	639	0	100.00	0.00	AFRICA	G-I
5	A/COD/3/2011	COD11-03	639	638	0	99.84	0.16	AFRICA	G-I
6	A/COD/2/2011	COD11-02	639	637	0	99.69	0.31	AFRICA	G-I
7	A/KEN/28/2008	KEN08-28	639	627	0	98.12	1.88	AFRICA	G-I
8	A/TAN/47/2009	TAN09-47	639	622	0	97.34	2.66	AFRICA	G-I
9	A/KEN/22/2009	KEN09-22	639	621	0	97.18	2.82	AFRICA	G-I
10	A/TAN/42/2009	TAN09-42	639	621	0	97.18	2.82	AFRICA	G-I
<b>Most Closely Related Reference Viruses</b>									
(see <a href="http://www.wrlfmd.org/fmd_genotyping/prototypes.htm">http://www.wrlfmd.org/fmd_genotyping/prototypes.htm</a> )									
Pos.	Virus name	Filename	No. nt comp.	No. nt match.	No. of ambig.	% Id.	% Diff.	Topotype	Strain
1	A/KEN/42/66 (K18/66)	KEN66-42	639	544	0	85.13	14.87	AFRICA	G-I
2	A/NGR/2/73	NGR73-02	639	528	0	82.63	17.37	AFRICA	G-V
3	A21/Lumbwa/KEN/64 (AY593761)	KEN64-AA	639	526	0	82.32	17.68	AFRICA	G-III
4	A/UGA/13/66	UGA66-13	639	523	0	81.85	18.15	AFRICA	G-VII
5	A12/UK/119/32 (M10975)	UKG32119	639	523	0	81.85	18.15	EURO-SA	A <sub>12</sub>
6	A/EGY/1/72 (EF208756)	EGY72-01	639	522	0	81.69	18.31	AFRICA	G-II
7	A/GHA/16/73	GHA73-16	636	519	0	81.60	18.40	AFRICA	G-VI
8	A/SUD/3/77 (GU566064)	SUD77-03	639	517	0	80.91	19.09	AFRICA	G-IV
9	A5/Allier/FRA/60 (AY593780)	FRA60--F	636	513	0	80.66	19.34	EURO-SA	A <sub>5</sub>
10	A23/Kitale/KEN/64 (AY593766)	KEN64-AB	639	512	0	80.13	19.87	AFRICA	G-VIII

nt, nucleotides

\*, not a WRLFMD reference number

Assembled with Report Generator v4.1

© *Institute for Animal Health* (not to be reproduced without permission)

# FAO World Reference Laboratory for FMD Genotyping Report

IAH-P-EP-MEG-FOR-005-3

Page 1 of 1

Serotype: A WRLFMD Ref No: COD/10/2011 Batch No: WRLFMD/2011/00042 Sender Ref: KIT 86 Location: Kitemesho, Sud -Kivo, Plaine De La Ruzizi, Dem.Rep.Congo Date collected: 03/02/2011 Date received by WRLFMD: 29/09/2011 Date received for sequencing: 18/10/2011 Species: Cattle Material used: BTy2 Region sequenced: VP1 RT-PCR primers: A-1C562F/EUR-2B52R A-1C612F/EUR-2B52R	Report date: 25/10/2011 Reported by: N.J. Knowles Checked by: D.P. King Topotype: AFRICA Genotype/strain: G-I Sequence filename: COD11-10.SEQ Date sequence last updated: 19/10/2011 No. of Nt determined: 639 No. of ambiguities: 0 Gene length: 639 Total no. of comparisons: 1353 Min. no. of nt for comparison: 600 Total turn-around time: 26 days Sequencing time: 7 days
Comments:	

Most Closely Related Viruses									
Pos.	Virus name	Filename	No. nt comp.	No. nt match.	No. of ambig.	% Id.	% Diff.	Topotype	Strain
1	A/COD/11/2011	COD11-11	639	639	0	100.00	0.00	AFRICA	G-I
2	A/COD/12/2011	COD11-12	639	639	0	100.00	0.00	AFRICA	G-I
3	A/COD/8/2011	COD11-08	639	639	0	100.00	0.00	AFRICA	G-I
4	A/COD/9/2011	COD11-09	639	639	0	100.00	0.00	AFRICA	G-I
5	A/COD/3/2011	COD11-03	639	638	0	99.84	0.16	AFRICA	G-I
6	A/COD/2/2011	COD11-02	639	637	0	99.69	0.31	AFRICA	G-I
7	A/KEN/28/2008	KEN08-28	639	627	0	98.12	1.88	AFRICA	G-I
8	A/TAN/47/2009	TAN09-47	639	622	0	97.34	2.66	AFRICA	G-I
9	A/KEN/22/2009	KEN09-22	639	621	0	97.18	2.82	AFRICA	G-I
10	A/TAN/42/2009	TAN09-42	639	621	0	97.18	2.82	AFRICA	G-I
Most Closely Related Reference Viruses									
(see <a href="http://www.wrlfmd.org/fmd_genotyping/prototypes.htm">http://www.wrlfmd.org/fmd_genotyping/prototypes.htm</a> )									
Pos.	Virus name	Filename	No. nt comp.	No. nt match.	No. of ambig.	% Id.	% Diff.	Topotype	Strain
1	A/KEN/42/66 (K18/66)	KEN66-42	639	544	0	85.13	14.87	AFRICA	G-I
2	A/NGR/2/73	NGR73-02	639	528	0	82.63	17.37	AFRICA	G-V
3	A21/Lumbwa/KEN/64 (AY593761)	KEN64-AA	639	526	0	82.32	17.68	AFRICA	G-III
4	A/UGA/13/66	UGA66-13	639	523	0	81.85	18.15	AFRICA	G-VII
5	A12/UK/119/32 (M10975)	UKG32119	639	523	0	81.85	18.15	EURO-SA	A <sub>12</sub>
6	A/EGY/1/72 (EF208756)	EGY72-01	639	522	0	81.69	18.31	AFRICA	G-II
7	A/GHA/16/73	GHA73-16	636	519	0	81.60	18.40	AFRICA	G-VI
8	A/SUD/3/77 (GU566064)	SUD77-03	639	517	0	80.91	19.09	AFRICA	G-IV
9	A5/Allier/FRA/60 (AY593780)	FRA60--F	636	513	0	80.66	19.34	EURO-SA	A <sub>5</sub>
10	A23/Kitale/KEN/64 (AY593766)	KEN64-AB	639	512	0	80.13	19.87	AFRICA	G-VIII

nt, nucleotides

\*, not a WRLFMD reference number

Assembled with Report Generator v4.1

© Institute for Animal Health (not to be reproduced without permission)

# FAO World Reference Laboratory for FMD Genotyping Report

IAH-P-EP-MEG-FOR-005-3

Page 1 of 1

Serotype: A WRLFMD Ref No: COD/11/2011 Batch No: WRLFMD/2011/00042 Sender Ref: KIT 89 Location: Kitemesho, Sud -Kivo, Plaine De La Ruzizi, Dem.Rep.Congo Date collected: 03/02/2011 Date received by WRLFMD: 29/09/2011 Date received for sequencing: 18/10/2011 Species: Cattle Material used: BTy2 Region sequenced: VP1 RT-PCR primers: A-1C562F/EUR-2B52R A-1C612F/EUR-2B52R	Report date: 25/10/2011 Reported by: N.J. Knowles Checked by: D.P. King Topotype: AFRICA Genotype/strain: G-I Sequence filename: COD11-11.SEQ Date sequence last updated: 19/10/2011 No. of Nt determined: 639 No. of ambiguities: 0 Gene length: 639 Total no. of comparisons: 1353 Min. no. of nt for comparison: 600 Total turn-around time: 26 days Sequencing time: 7 days
Comments:	

<b>Most Closely Related Viruses</b>									
Pos.	Virus name	Filename	No. nt comp.	No. nt match.	No. of ambig.	% Id.	% Diff.	Topotype	Strain
1	A/COD/10/2011	COD11-10	639	639	0	100.00	0.00	AFRICA	G-I
2	A/COD/12/2011	COD11-12	639	639	0	100.00	0.00	AFRICA	G-I
3	A/COD/8/2011	COD11-08	639	639	0	100.00	0.00	AFRICA	G-I
4	A/COD/9/2011	COD11-09	639	639	0	100.00	0.00	AFRICA	G-I
5	A/COD/3/2011	COD11-03	639	638	0	99.84	0.16	AFRICA	G-I
6	A/COD/2/2011	COD11-02	639	637	0	99.69	0.31	AFRICA	G-I
7	A/KEN/28/2008	KEN08-28	639	627	0	98.12	1.88	AFRICA	G-I
8	A/TAN/47/2009	TAN09-47	639	622	0	97.34	2.66	AFRICA	G-I
9	A/KEN/22/2009	KEN09-22	639	621	0	97.18	2.82	AFRICA	G-I
10	A/TAN/42/2009	TAN09-42	639	621	0	97.18	2.82	AFRICA	G-I
<b>Most Closely Related Reference Viruses</b>									
(see <a href="http://www.wrlfmd.org/fmd_genotyping/prototypes.htm">http://www.wrlfmd.org/fmd_genotyping/prototypes.htm</a> )									
Pos.	Virus name	Filename	No. nt comp.	No. nt match.	No. of ambig.	% Id.	% Diff.	Topotype	Strain
1	A/KEN/42/66 (K18/66)	KEN66-42	639	544	0	85.13	14.87	AFRICA	G-I
2	A/NGR/2/73	NGR73-02	639	528	0	82.63	17.37	AFRICA	G-V
3	A21/Lumbwa/KEN/64 (AY593761)	KEN64-AA	639	526	0	82.32	17.68	AFRICA	G-III
4	A/UGA/13/66	UGA66-13	639	523	0	81.85	18.15	AFRICA	G-VII
5	A12/UK/119/32 (M10975)	UKG32119	639	523	0	81.85	18.15	EURO-SA	A <sub>12</sub>
6	A/EGY/1/72 (EF208756)	EGY72-01	639	522	0	81.69	18.31	AFRICA	G-II
7	A/GHA/16/73	GHA73-16	636	519	0	81.60	18.40	AFRICA	G-VI
8	A/SUD/3/77 (GU566064)	SUD77-03	639	517	0	80.91	19.09	AFRICA	G-IV
9	A5/Allier/FRA/60 (AY593780)	FRA60--F	636	513	0	80.66	19.34	EURO-SA	A <sub>5</sub>
10	A23/Kitale/KEN/64 (AY593766)	KEN64-AB	639	512	0	80.13	19.87	AFRICA	G-VIII

nt, nucleotides

\*, not a WRLFMD reference number

Assembled with Report Generator v4.1

© Institute for Animal Health (not to be reproduced without permission)



# FAO World Reference Laboratory for FMD Genotyping Report

IAH-P-EP-MEG-FOR-005-3

Page 1 of 1

Serotype: A	Report date: 25/10/2011
WRLFMD Ref No: COD/12/2011	Reported by: N.J. Knowles
Batch No: WRLFMD/2011/00042	Checked by: D.P. King
Sender Ref: KIT 92	
Location: Kitemesho, Sud -Kivo, Plaine De La Ruzizi, Dem.Rep.Congo	Topotype: AFRICA
Date collected: 03/02/2011	Genotype/strain: G-I
Date received by WRLFMD: 29/09/2011	Sequence filename: COD11-12.SEQ
Date received for sequencing: 18/10/2011	Date sequence last updated: 19/10/2011
Species: Cattle	No. of Nt determined: 639
Material used: BTy1	No. of ambiguities: 0
Region sequenced: VP1	Gene length: 639
RT-PCR primers: A-1C562F/EUR-2B52R A-1C612F/EUR-2B52R	Total no. of comparisons: 1353
	Min. no. of nt for comparison: 600
	Total turn-around time: 26 days
	Sequencing time: 7 days
<b>Comments:</b>	

<b>Most Closely Related Viruses</b>									
Pos.	Virus name	Filename	No. nt comp.	No. nt match.	No. of ambig.	% Id.	% Diff.	Topotype	Strain
1	A/COD/10/2011	COD11-10	639	639	0	100.00	0.00	AFRICA	G-I
2	A/COD/11/2011	COD11-11	639	639	0	100.00	0.00	AFRICA	G-I
3	A/COD/8/2011	COD11-08	639	639	0	100.00	0.00	AFRICA	G-I
4	A/COD/9/2011	COD11-09	639	639	0	100.00	0.00	AFRICA	G-I
5	A/COD/3/2011	COD11-03	639	638	0	99.84	0.16	AFRICA	G-I
6	A/COD/2/2011	COD11-02	639	637	0	99.69	0.31	AFRICA	G-I
7	A/KEN/28/2008	KEN08-28	639	627	0	98.12	1.88	AFRICA	G-I
8	A/TAN/47/2009	TAN09-47	639	622	0	97.34	2.66	AFRICA	G-I
9	A/KEN/22/2009	KEN09-22	639	621	0	97.18	2.82	AFRICA	G-I
10	A/TAN/42/2009	TAN09-42	639	621	0	97.18	2.82	AFRICA	G-I
<b>Most Closely Related Reference Viruses</b>									
(see <a href="http://www.wrlfmd.org/fmd_genotyping/prototypes.htm">http://www.wrlfmd.org/fmd_genotyping/prototypes.htm</a> )									
Pos.	Virus name	Filename	No. nt comp.	No. nt match.	No. of ambig.	% Id.	% Diff.	Topotype	Strain
1	A/KEN/42/66 (K18/66)	KEN66-42	639	544	0	85.13	14.87	AFRICA	G-I
2	A/NGR/2/73	NGR73-02	639	528	0	82.63	17.37	AFRICA	G-V
3	A21/Lumbwa/KEN/64 (AY593761)	KEN64-AA	639	526	0	82.32	17.68	AFRICA	G-III
4	A/UGA/13/66	UGA66-13	639	523	0	81.85	18.15	AFRICA	G-VII
5	A12/UK/119/32 (M10975)	UKG32119	639	523	0	81.85	18.15	EURO-SA	A <sub>12</sub>
6	A/EGY/1/72 (EF208756)	EGY72-01	639	522	0	81.69	18.31	AFRICA	G-II
7	A/GHA/16/73	GHA73-16	636	519	0	81.60	18.40	AFRICA	G-VI
8	A/SUD/3/77 (GU566064)	SUD77-03	639	517	0	80.91	19.09	AFRICA	G-IV
9	A5/Allier/FRA/60 (AY593780)	FRA60--F	636	513	0	80.66	19.34	EURO-SA	A <sub>5</sub>
10	A23/Kitale/KEN/64 (AY593766)	KEN64-AB	639	512	0	80.13	19.87	AFRICA	G-VIII

nt, nucleotides

\*, not a WRLFMD reference number

Assembled with Report Generator v4.1

© Institute for Animal Health (not to be reproduced without permission)

# Report on FMDV A in the Democratic Republic of the Congo in 2011

Batch: WRLFMD/2011/00042

◆ indicates viruses in this batch

Software: MEGA 5.0

Analysis

Analysis ----- Phylogeny Reconstruction

Scope ----- All Selected Taxa

Statistical Method ----- Neighbor-joining

Phylogeny Test

Test of Phylogeny ----- Bootstrap method

No. of Bootstrap Replications ----- 1000

Substitution Model

Substitutions Type ----- Nucleotide

Model/Method ----- Kimura 2-parameter model

Substitutions to Include ----- d: Transitions + Transversions

Rates and Patterns

Rates among Sites ----- Uniform rates

Pattern among Lineages ----- Same (Homogeneous)

Data Subset to Use

Gaps/Missing Data Treatment ----- Pairwise deletion

Codons Included ----- 1st+2nd+3rd+Non-Coding

No. of Sites : 639

No Of Bootstrap Reps = 1000

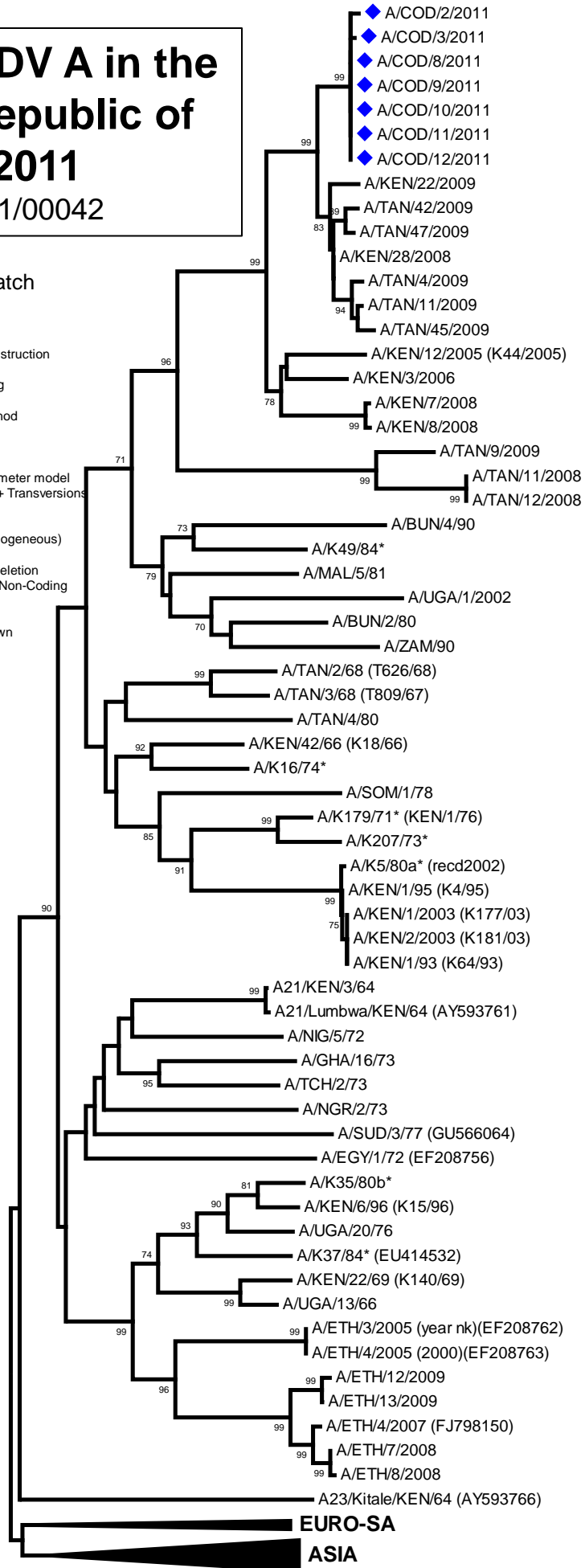
Only bootstrap values of 70% and above are shown

\*, not a WRLFMD Ref. No.

N.J. Knowles & J. Wadsworth, 25 October 2011

© Institute for Animal Health

(not to be reproduced without permission)



G-I

AFRICA

G-III

G-VI

G-V

G-IV

G-II

G-VII

G-VIII

EURO-SA

ASIA

0.02