

# FAO World Reference Laboratory for Foot-and-Mouth Disease (WRLFMD)

## Genotyping Report

Report Date for this Batch: 25 April 2013

FMDV type SAT 2  
Country: Tanzania  
Period: 2012  
No. of samples: 1

BATCH: WRLFMD/2013/00005



The contents of this report are copyright and should not be reproduced without permission

© The Pirbright Institute



# Report on FMDV SAT 2 in Tanzania in 2012

Batch: WRLFMD/2013/00005

◆ indicates viruses in this batch

Software: MEGA 5.1

Analysis

Analysis ----- Phylogeny Reconstruction

Scope ----- All Selected Taxa

Statistical Method ----- Neighbor-joining

Phylogeny Test

Test of Phylogeny ----- Bootstrap method

No. of Bootstrap Replications ----- 1000

Substitution Model

Substitutions Type ----- Nucleotide

Model/Method ----- Kimura 2-parameter model

Substitutions to Include ----- d: Transitions + Transversions

Rates and Patterns

Rates among Sites ----- Uniform rates

Pattern among Lineages ----- Same (Homogeneous)

Data Subset to Use

Gaps/Missing Data Treatment ----- Pairwise deletion

Codons Included ----- 1st+2nd+3rd+Non-Coding

No. of Sites : 651

No Of Bootstrap Reprs = 1000

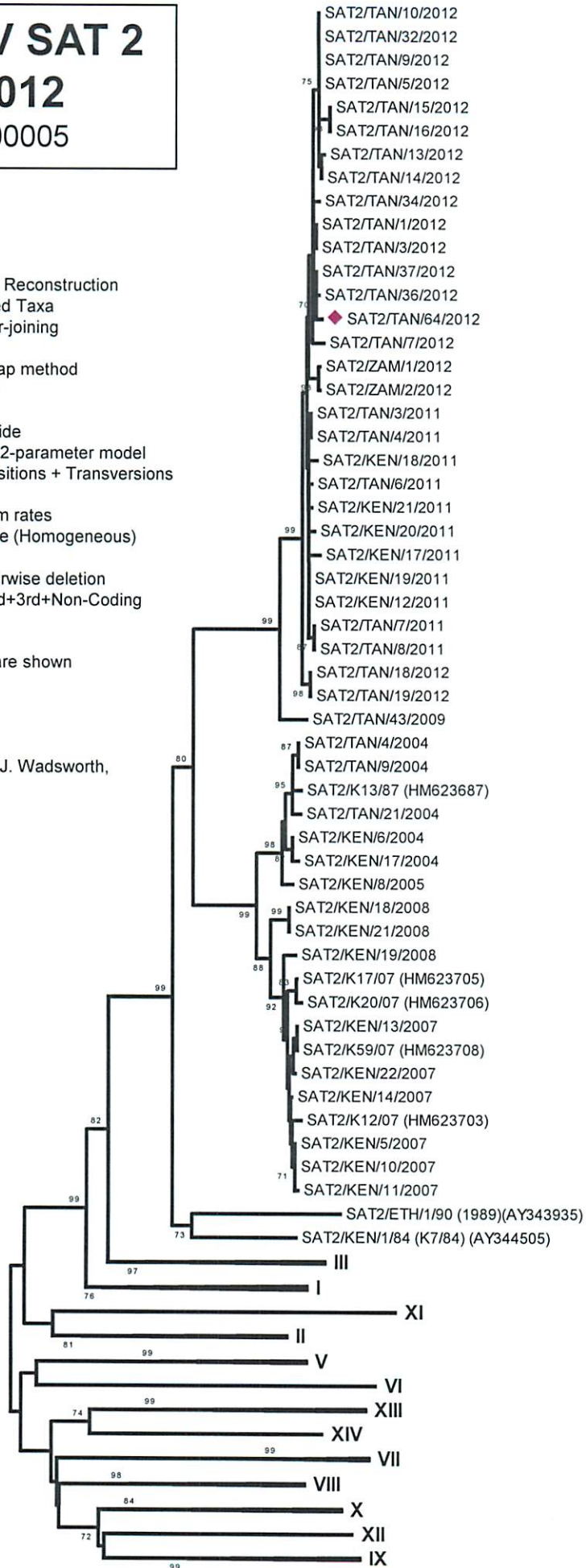
Only bootstrap values of 70% and above are shown

\*, not a WRLFMD Ref. No.

N.J. Knowles, K. Bachanek-Bankowska & J. Wadsworth,  
25 April 2013

© The Pirbright Institute

(not to be reproduced without permission)



IV