

FAO World Reference Laboratory for Foot-and-Mouth Disease (WRLFMD)

Genotyping Report

FMDV serotype: O
Country: Mauritius
Year: 2016
Batch: WRLFMD/2016/00030
No. of sequences: 23
Report date: 6th October 2016
Report generated by: Kasia Bankowska
Report checked by: Nick Knowles



Copyright © 2016 The Pirbright Institute, Ash Road, Pirbright, Woking GU24 0NF, United Kingdom.

www: <http://www.wrlfmd.org/>

email: reporting@pirbright.ac.uk

The contents of this report should not be reproduced without permission.

Virus sample name:	MUR/1/2016
Sender reference:	O/1A/MAU/2016
Location of origin:	Vallee des pretres, Mauritius Island
Country of origin:	Mauritius
Date of collection:	09/08/2016
Host species:	cattle
Serotype:	O
Topotype:	ME-SA
Lineage:	Ind-2001
Sublineage:	d
Sequence length:	633
Ambiguities:	1
Material submitted for sequencing:	BTy1
Harvest date of material:	22/09/2016
Primers:	O-1C244F/EUR-2B52R; O-1C272F/EUR-2B52R
Received for sequencing:	29/09/2016
Created:	04/10/2016
Last updated:	04/10/2016
VIBASys IDs: sample 30168, genome 30169, sequence viba_30170, sequencing info 30171	

Most Closely Related Sequences

sequence	virus name	Host	% Id.	# Ambig.	serotype	topotype	lineage	sublineage
viba_30003	2B/MAUR/2016	bovine	99.8	0	O	ME-SA	Ind-2001	d
viba_30015	3B/MAUR/2016	bovine	99.8	0	O	ME-SA	Ind-2001	d
viba_29999	1A/MAUR/2016	bovine	99.8	0	O	ME-SA	Ind-2001	d
viba_30011	3A/MAUR/2016	bovine	99.8	0	O	ME-SA	Ind-2001	d
viba_30019	5A/MAUR/2016	bovine	99.8	0	O	ME-SA	Ind-2001	d
viba_30032	F3/ROD/2016	bovine	99.7	0	O	ME-SA	Ind-2001	d
viba_30039	MUS02/19	bovine	99.7	0	O	ME-SA	Ind-2001	d
viba_30028	F2/ROD/2016	bovine	99.7	0	O	ME-SA	Ind-2001	d
viba_30007	2C/MAUR/2016	bovine	99.7	0	O	ME-SA	Ind-2001	d
viba_30024	F1/ROD/2016	bovine	99.7	0	O	ME-SA	Ind-2001	d

Most Closely Related Prototype Sequences

see http://www.wrlfmd.org/fmd_genotyping/prototypes.htm

sequence	virus name	Host	% Id.	# Ambig.	serotype	topotype	lineage	sublineage
viba_293	BHU/3/2009	cattle	94.0	0	O	ME-SA	Ind-2001	d
viba_541	OMN/7/2001	bovine	93.1	0	O	ME-SA	Ind-2001	b
viba_705	KUW/3/97	bovine	91.8	0	O	ME-SA	Ind-2001	a
viba_397	UAE/4/2008	gazelle	90.4	0	O	ME-SA	Ind-2001	c
viba_285	UKG/35/2001	porcine	89.3	0	O	ME-SA	PanAsia	
viba_766	IRN/31/2009	cattle	88.9	0	O	ME-SA	PanAsia-2	FAR-09
viba_650	IRN/8/2005	ovine	88.5	0	O	ME-SA	PanAsia-2	
viba_359	Manisa/TUR/69		88.5	0	O	ME-SA		
viba_719	IRN/88/2009		88.3	0	O	ME-SA	PanAsia-2	ANT-10
viba_666	IRN/18/2010	cattle	88.2	0	O	ME-SA	PanAsia-2	BAL-09

Virus sample name:	MUR/2/2016
Sender reference:	O/1A/MAU/2016/P0+2
Location of origin:	Vallee des pretres, Mauritius Island
Country of origin:	Mauritius
Date of collection:	09/08/2016
Host species:	cattle
Serotype:	O
Topotype:	ME-SA
Lineage:	Ind-2001
Sublineage:	d
Sequence length:	633
Ambiguities:	0
Material submitted for sequencing:	BTy1
Harvest date of material:	22/09/2016
Primers:	O-1C244F/EUR-2B52R; O-1C272F/EUR-2B52R
Received for sequencing:	29/09/2016
Created:	04/10/2016
Last updated:	04/10/2016
VIBASys IDs: sample 30172, genome 30173, sequence viba_30174, sequencing info 30175	

Most Closely Related Sequences

sequence	virus name	Host	% Id.	# Ambig.	serotype	topotype	lineage	sublineage
viba_30003	2B/MAUR/2016	bovine	100.0	0	O	ME-SA	Ind-2001	d
viba_30015	3B/MAUR/2016	bovine	100.0	0	O	ME-SA	Ind-2001	d
viba_30011	3A/MAUR/2016	bovine	100.0	0	O	ME-SA	Ind-2001	d
viba_30019	5A/MAUR/2016	bovine	100.0	0	O	ME-SA	Ind-2001	d
viba_30032	F3/ROD/2016	bovine	99.8	0	O	ME-SA	Ind-2001	d
viba_30039	MUS02/19	bovine	99.8	0	O	ME-SA	Ind-2001	d
viba_30028	F2/ROD/2016	bovine	99.8	0	O	ME-SA	Ind-2001	d
viba_30007	2C/MAUR/2016	bovine	99.8	0	O	ME-SA	Ind-2001	d
viba_29999	1A/MAUR/2016	bovine	99.8	0	O	ME-SA	Ind-2001	d
viba_30024	F1/ROD/2016	bovine	99.8	0	O	ME-SA	Ind-2001	d

Most Closely Related Prototype Sequences

see http://www.wrlfmd.org/fmd_genotyping/prototypes.htm

sequence	virus name	Host	% Id.	# Ambig.	serotype	topotype	lineage	sublineage
viba_293	BHU/3/2009	cattle	94.2	0	O	ME-SA	Ind-2001	d
viba_541	OMN/7/2001	bovine	93.2	0	O	ME-SA	Ind-2001	b
viba_705	KUW/3/97	bovine	92.0	0	O	ME-SA	Ind-2001	a
viba_397	UAE/4/2008	gazelle	90.5	0	O	ME-SA	Ind-2001	c
viba_285	UKG/35/2001	porcine	89.4	0	O	ME-SA	PanAsia	
viba_766	IRN/31/2009	cattle	89.1	0	O	ME-SA	PanAsia-2	FAR-09
viba_650	IRN/8/2005	ovine	88.6	0	O	ME-SA	PanAsia-2	
viba_359	Manisa/TUR/69		88.6	0	O	ME-SA		
viba_719	IRN/88/2009		88.5	0	O	ME-SA	PanAsia-2	ANT-10
viba_666	IRN/18/2010	cattle	88.3	0	O	ME-SA	PanAsia-2	BAL-09

Virus sample name:	MUR/3/2016
Sender reference:	O/2A/MAU/2016
Location of origin:	Cite La Cure, Mauritius Island
Country of origin:	Mauritius
Date of collection:	09/08/2016
Host species:	cattle
Serotype:	O
Topotype:	ME-SA
Lineage:	Ind-2001
Sublineage:	d
Sequence length:	633
Ambiguities:	0
Material submitted for sequencing:	BTy2
Harvest date of material:	24/09/2016
Primers:	O-1C244F/EUR-2B52R; O-1C272F/EUR-2B52R
Received for sequencing:	29/09/2016
Created:	04/10/2016
Last updated:	04/10/2016
VIBASys IDs: sample 30176, genome 30177, sequence viba_30178, sequencing info 30179	

Most Closely Related Sequences

sequence	virus name	Host	% Id.	# Ambig.	serotype	topotype	lineage	sublineage
viba_30003	2B/MAUR/2016	bovine	100.0	0	O	ME-SA	Ind-2001	d
viba_30015	3B/MAUR/2016	bovine	100.0	0	O	ME-SA	Ind-2001	d
viba_30011	3A/MAUR/2016	bovine	100.0	0	O	ME-SA	Ind-2001	d
viba_30019	5A/MAUR/2016	bovine	100.0	0	O	ME-SA	Ind-2001	d
viba_30032	F3/ROD/2016	bovine	99.8	0	O	ME-SA	Ind-2001	d
viba_30039	MUS02/19	bovine	99.8	0	O	ME-SA	Ind-2001	d
viba_30028	F2/ROD/2016	bovine	99.8	0	O	ME-SA	Ind-2001	d
viba_30007	2C/MAUR/2016	bovine	99.8	0	O	ME-SA	Ind-2001	d
viba_29999	1A/MAUR/2016	bovine	99.8	0	O	ME-SA	Ind-2001	d
viba_30024	F1/ROD/2016	bovine	99.8	0	O	ME-SA	Ind-2001	d

Most Closely Related Prototype Sequences

see http://www.wrlfmd.org/fmd_genotyping/prototypes.htm

sequence	virus name	Host	% Id.	# Ambig.	serotype	topotype	lineage	sublineage
viba_293	BHU/3/2009	cattle	94.2	0	O	ME-SA	Ind-2001	d
viba_541	OMN/7/2001	bovine	93.2	0	O	ME-SA	Ind-2001	b
viba_705	KUW/3/97	bovine	92.0	0	O	ME-SA	Ind-2001	a
viba_397	UAE/4/2008	gazelle	90.5	0	O	ME-SA	Ind-2001	c
viba_285	UKG/35/2001	porcine	89.4	0	O	ME-SA	PanAsia	
viba_766	IRN/31/2009	cattle	89.1	0	O	ME-SA	PanAsia-2	FAR-09
viba_650	IRN/8/2005	ovine	88.6	0	O	ME-SA	PanAsia-2	
viba_359	Manisa/TUR/69		88.6	0	O	ME-SA		
viba_719	IRN/88/2009		88.5	0	O	ME-SA	PanAsia-2	ANT-10
viba_666	IRN/18/2010	cattle	88.3	0	O	ME-SA	PanAsia-2	BAL-09

Virus sample name:	MUR/4/2016
Sender reference:	O/2A/MAU/2016/P0+2
Location of origin:	Cite La Cure, Mauritius Island
Country of origin:	Mauritius
Date of collection:	09/08/2016
Host species:	cattle
Serotype:	O
Topotype:	ME-SA
Lineage:	Ind-2001
Sublineage:	d
Sequence length:	633
Ambiguities:	0
Material submitted for sequencing:	BTy1
Harvest date of material:	22/09/2016
Primers:	O-1C244F/EUR-2B52R; O-1C272F/EUR-2B52R
Received for sequencing:	29/09/2016
Created:	04/10/2016
Last updated:	04/10/2016
VIBASys IDs: sample 30180, genome 30181, sequence viba_30182, sequencing info 30183	

Most Closely Related Sequences

sequence	virus name	Host	% Id.	# Ambig.	serotype	topotype	lineage	sublineage
viba_30003	2B/MAUR/2016	bovine	100.0	0	O	ME-SA	Ind-2001	d
viba_30015	3B/MAUR/2016	bovine	100.0	0	O	ME-SA	Ind-2001	d
viba_30011	3A/MAUR/2016	bovine	100.0	0	O	ME-SA	Ind-2001	d
viba_30019	5A/MAUR/2016	bovine	100.0	0	O	ME-SA	Ind-2001	d
viba_30032	F3/ROD/2016	bovine	99.8	0	O	ME-SA	Ind-2001	d
viba_30039	MUS02/19	bovine	99.8	0	O	ME-SA	Ind-2001	d
viba_30028	F2/ROD/2016	bovine	99.8	0	O	ME-SA	Ind-2001	d
viba_30007	2C/MAUR/2016	bovine	99.8	0	O	ME-SA	Ind-2001	d
viba_29999	1A/MAUR/2016	bovine	99.8	0	O	ME-SA	Ind-2001	d
viba_30024	F1/ROD/2016	bovine	99.8	0	O	ME-SA	Ind-2001	d

Most Closely Related Prototype Sequences

see http://www.wrlfmd.org/fmd_genotyping/prototypes.htm

sequence	virus name	Host	% Id.	# Ambig.	serotype	topotype	lineage	sublineage
viba_293	BHU/3/2009	cattle	94.2	0	O	ME-SA	Ind-2001	d
viba_541	OMN/7/2001	bovine	93.2	0	O	ME-SA	Ind-2001	b
viba_705	KUW/3/97	bovine	92.0	0	O	ME-SA	Ind-2001	a
viba_397	UAE/4/2008	gazelle	90.5	0	O	ME-SA	Ind-2001	c
viba_285	UKG/35/2001	porcine	89.4	0	O	ME-SA	PanAsia	
viba_766	IRN/31/2009	cattle	89.1	0	O	ME-SA	PanAsia-2	FAR-09
viba_650	IRN/8/2005	ovine	88.6	0	O	ME-SA	PanAsia-2	
viba_359	Manisa/TUR/69		88.6	0	O	ME-SA		
viba_719	IRN/88/2009		88.5	0	O	ME-SA	PanAsia-2	ANT-10
viba_666	IRN/18/2010	cattle	88.3	0	O	ME-SA	PanAsia-2	BAL-09

Virus sample name:	MUR/5/2016
Sender reference:	O/2B/MAU/2016
Location of origin:	Cite La Cure, Mauritius Island
Country of origin:	Mauritius
Date of collection:	09/08/2016
Host species:	cattle
Serotype:	O
Topotype:	ME-SA
Lineage:	Ind-2001
Sublineage:	d
Sequence length:	633
Ambiguities:	0
Material submitted for sequencing:	BTy1
Harvest date of material:	22/09/2016
Primers:	O-1C244F/EUR-2B52R; O-1C272F/EUR-2B52R
Received for sequencing:	29/09/2016
Created:	04/10/2016
Last updated:	04/10/2016

VIBASys IDs: sample 30184, genome 30185, sequence viba_30186, sequencing info 30187

Most Closely Related Sequences

sequence	virus name	Host	% Id.	# Ambig.	serotype	topotype	lineage	sublineage
viba_30003	2B/MAUR/2016	bovine	100.0	0	O	ME-SA	Ind-2001	d
viba_30015	3B/MAUR/2016	bovine	100.0	0	O	ME-SA	Ind-2001	d
viba_30011	3A/MAUR/2016	bovine	100.0	0	O	ME-SA	Ind-2001	d
viba_30019	5A/MAUR/2016	bovine	100.0	0	O	ME-SA	Ind-2001	d
viba_30032	F3/ROD/2016	bovine	99.8	0	O	ME-SA	Ind-2001	d
viba_30039	MUS02/19	bovine	99.8	0	O	ME-SA	Ind-2001	d
viba_30028	F2/ROD/2016	bovine	99.8	0	O	ME-SA	Ind-2001	d
viba_30007	2C/MAUR/2016	bovine	99.8	0	O	ME-SA	Ind-2001	d
viba_29999	1A/MAUR/2016	bovine	99.8	0	O	ME-SA	Ind-2001	d
viba_30024	F1/ROD/2016	bovine	99.8	0	O	ME-SA	Ind-2001	d

Most Closely Related Prototype Sequences

see http://www.wrlfmd.org/fmd_genotyping/prototypes.htm

sequence	virus name	Host	% Id.	# Ambig.	serotype	topotype	lineage	sublineage
viba_293	BHU/3/2009	cattle	94.2	0	O	ME-SA	Ind-2001	d
viba_541	OMN/7/2001	bovine	93.2	0	O	ME-SA	Ind-2001	b
viba_705	KUW/3/97	bovine	92.0	0	O	ME-SA	Ind-2001	a
viba_397	UAE/4/2008	gazelle	90.5	0	O	ME-SA	Ind-2001	c
viba_285	UKG/35/2001	porcine	89.4	0	O	ME-SA	PanAsia	
viba_766	IRN/31/2009	cattle	89.1	0	O	ME-SA	PanAsia-2	FAR-09
viba_650	IRN/8/2005	ovine	88.6	0	O	ME-SA	PanAsia-2	
viba_359	Manisa/TUR/69		88.6	0	O	ME-SA		
viba_719	IRN/88/2009		88.5	0	O	ME-SA	PanAsia-2	ANT-10
viba_666	IRN/18/2010	cattle	88.3	0	O	ME-SA	PanAsia-2	BAL-09

Virus sample name:	MUR/6/2016
Sender reference:	O/2B/MAU/2016/P0+1
Location of origin:	Cite La Cure, Mauritius Island
Country of origin:	Mauritius
Date of collection:	09/08/2016
Host species:	cattle
Serotype:	O
Topotype:	ME-SA
Lineage:	Ind-2001
Sublineage:	d
Sequence length:	633
Ambiguities:	0
Material submitted for sequencing:	BTy1
Harvest date of material:	22/09/2016
Primers:	O-1C244F/EUR-2B52R; O-1C272F/EUR-2B52R
Received for sequencing:	29/09/2016
Created:	04/10/2016
Last updated:	04/10/2016

VIBASys IDs: sample 30188, genome 30189, sequence viba_30190, sequencing info 30191

Most Closely Related Sequences

sequence	virus name	Host	% Id.	# Ambig.	serotype	topotype	lineage	sublineage
viba_30003	2B/MAUR/2016	bovine	100.0	0	O	ME-SA	Ind-2001	d
viba_30015	3B/MAUR/2016	bovine	100.0	0	O	ME-SA	Ind-2001	d
viba_30011	3A/MAUR/2016	bovine	100.0	0	O	ME-SA	Ind-2001	d
viba_30019	5A/MAUR/2016	bovine	100.0	0	O	ME-SA	Ind-2001	d
viba_30032	F3/ROD/2016	bovine	99.8	0	O	ME-SA	Ind-2001	d
viba_30039	MUS02/19	bovine	99.8	0	O	ME-SA	Ind-2001	d
viba_30028	F2/ROD/2016	bovine	99.8	0	O	ME-SA	Ind-2001	d
viba_30007	2C/MAUR/2016	bovine	99.8	0	O	ME-SA	Ind-2001	d
viba_29999	1A/MAUR/2016	bovine	99.8	0	O	ME-SA	Ind-2001	d
viba_30024	F1/ROD/2016	bovine	99.8	0	O	ME-SA	Ind-2001	d

Most Closely Related Prototype Sequences

see http://www.wrlfmd.org/fmd_genotyping/prototypes.htm

sequence	virus name	Host	% Id.	# Ambig.	serotype	topotype	lineage	sublineage
viba_293	BHU/3/2009	cattle	94.2	0	O	ME-SA	Ind-2001	d
viba_541	OMN/7/2001	bovine	93.2	0	O	ME-SA	Ind-2001	b
viba_705	KUW/3/97	bovine	92.0	0	O	ME-SA	Ind-2001	a
viba_397	UAE/4/2008	gazelle	90.5	0	O	ME-SA	Ind-2001	c
viba_285	UKG/35/2001	porcine	89.4	0	O	ME-SA	PanAsia	
viba_766	IRN/31/2009	cattle	89.1	0	O	ME-SA	PanAsia-2	FAR-09
viba_650	IRN/8/2005	ovine	88.6	0	O	ME-SA	PanAsia-2	
viba_359	Manisa/TUR/69		88.6	0	O	ME-SA		
viba_719	IRN/88/2009		88.5	0	O	ME-SA	PanAsia-2	ANT-10
viba_666	IRN/18/2010	cattle	88.3	0	O	ME-SA	PanAsia-2	BAL-09

Virus sample name:	MUR/7/2016
Sender reference:	O/2C/MAU/2016
Location of origin:	Cite La Cure, Mauritius Island
Country of origin:	Mauritius
Date of collection:	09/08/2016
Host species:	cattle
Serotype:	O
Topotype:	ME-SA
Lineage:	Ind-2001
Sublineage:	d
Sequence length:	633
Ambiguities:	1
Material submitted for sequencing:	BTy1
Harvest date of material:	23/09/2016
Primers:	O-1C244F/EUR-2B52R; O-1C272F/EUR-2B52R
Received for sequencing:	29/09/2016
Created:	04/10/2016
Last updated:	04/10/2016
VIBASys IDs: sample 30192, genome 30193, sequence viba_30194, sequencing info 30195	

Most Closely Related Sequences

sequence	virus name	Host	% Id.	# Ambig.	serotype	topotype	lineage	sublineage
viba_30003	2B/MAUR/2016	bovine	99.8	0	O	ME-SA	Ind-2001	d
viba_30015	3B/MAUR/2016	bovine	99.8	0	O	ME-SA	Ind-2001	d
viba_30007	2C/MAUR/2016	bovine	99.8	0	O	ME-SA	Ind-2001	d
viba_30011	3A/MAUR/2016	bovine	99.8	0	O	ME-SA	Ind-2001	d
viba_30019	5A/MAUR/2016	bovine	99.8	0	O	ME-SA	Ind-2001	d
viba_30032	F3/ROD/2016	bovine	99.7	0	O	ME-SA	Ind-2001	d
viba_30039	MUS02/19	bovine	99.7	0	O	ME-SA	Ind-2001	d
viba_30028	F2/ROD/2016	bovine	99.7	0	O	ME-SA	Ind-2001	d
viba_29999	1A/MAUR/2016	bovine	99.7	0	O	ME-SA	Ind-2001	d
viba_30024	F1/ROD/2016	bovine	99.7	0	O	ME-SA	Ind-2001	d

Most Closely Related Prototype Sequences

see http://www.wrlfmd.org/fmd_genotyping/prototypes.htm

sequence	virus name	Host	% Id.	# Ambig.	serotype	topotype	lineage	sublineage
viba_293	BHU/3/2009	cattle	94.0	0	O	ME-SA	Ind-2001	d
viba_541	OMN/7/2001	bovine	93.1	0	O	ME-SA	Ind-2001	b
viba_705	KUW/3/97	bovine	91.8	0	O	ME-SA	Ind-2001	a
viba_397	UAE/4/2008	gazelle	90.4	0	O	ME-SA	Ind-2001	c
viba_285	UKG/35/2001	porcine	89.4	0	O	ME-SA	PanAsia	
viba_766	IRN/31/2009	cattle	88.9	0	O	ME-SA	PanAsia-2	FAR-09
viba_359	Manisa/TUR/69		88.6	0	O	ME-SA		
viba_650	IRN/8/2005	ovine	88.5	0	O	ME-SA	PanAsia-2	
viba_719	IRN/88/2009		88.3	0	O	ME-SA	PanAsia-2	ANT-10
viba_666	IRN/18/2010	cattle	88.2	0	O	ME-SA	PanAsia-2	BAL-09

Virus sample name:	MUR/8/2016
Sender reference:	O/2C/MAU/2016/P0+1
Location of origin:	Cite La Cure, Mauritius Island
Country of origin:	Mauritius
Date of collection:	09/08/2016
Host species:	cattle
Serotype:	O
Topotype:	ME-SA
Lineage:	Ind-2001
Sublineage:	d
Sequence length:	633
Ambiguities:	1
Material submitted for sequencing:	BTy1
Harvest date of material:	23/09/2016
Primers:	O-1C244F/EUR-2B52R; O-1C272F/EUR-2B52R
Received for sequencing:	29/09/2016
Created:	04/10/2016
Last updated:	04/10/2016
VIBASys IDs: sample 30196, genome 30197, sequence viba_30198, sequencing info 30199	

Most Closely Related Sequences

sequence	virus name	Host	% Id.	# Ambig.	serotype	topotype	lineage	sublineage
viba_30003	2B/MAUR/2016	bovine	99.8	0	O	ME-SA	Ind-2001	d
viba_30015	3B/MAUR/2016	bovine	99.8	0	O	ME-SA	Ind-2001	d
viba_30007	2C/MAUR/2016	bovine	99.8	0	O	ME-SA	Ind-2001	d
viba_30011	3A/MAUR/2016	bovine	99.8	0	O	ME-SA	Ind-2001	d
viba_30019	5A/MAUR/2016	bovine	99.8	0	O	ME-SA	Ind-2001	d
viba_30032	F3/ROD/2016	bovine	99.7	0	O	ME-SA	Ind-2001	d
viba_30039	MUS02/19	bovine	99.7	0	O	ME-SA	Ind-2001	d
viba_30028	F2/ROD/2016	bovine	99.7	0	O	ME-SA	Ind-2001	d
viba_29999	1A/MAUR/2016	bovine	99.7	0	O	ME-SA	Ind-2001	d
viba_30024	F1/ROD/2016	bovine	99.7	0	O	ME-SA	Ind-2001	d

Most Closely Related Prototype Sequences

see http://www.wrlfmd.org/fmd_genotyping/prototypes.htm

sequence	virus name	Host	% Id.	# Ambig.	serotype	topotype	lineage	sublineage
viba_293	BHU/3/2009	cattle	94.0	0	O	ME-SA	Ind-2001	d
viba_541	OMN/7/2001	bovine	93.1	0	O	ME-SA	Ind-2001	b
viba_705	KUW/3/97	bovine	91.8	0	O	ME-SA	Ind-2001	a
viba_397	UAE/4/2008	gazelle	90.4	0	O	ME-SA	Ind-2001	c
viba_285	UKG/35/2001	porcine	89.4	0	O	ME-SA	PanAsia	
viba_766	IRN/31/2009	cattle	88.9	0	O	ME-SA	PanAsia-2	FAR-09
viba_359	Manisa/TUR/69		88.6	0	O	ME-SA		
viba_650	IRN/8/2005	ovine	88.5	0	O	ME-SA	PanAsia-2	
viba_719	IRN/88/2009		88.3	0	O	ME-SA	PanAsia-2	ANT-10
viba_666	IRN/18/2010	cattle	88.2	0	O	ME-SA	PanAsia-2	BAL-09

Virus sample name:	MUR/9/2016
Sender reference:	O/3A/MAU/2016
Location of origin:	Cite La Cure, Mauritius Island
Country of origin:	Mauritius
Date of collection:	09/08/2016
Host species:	cattle
Serotype:	O
Topotype:	ME-SA
Lineage:	Ind-2001
Sublineage:	d
Sequence length:	633
Ambiguities:	0
Material submitted for sequencing:	BTy1
Harvest date of material:	22/09/2016
Primers:	O-1C244F/EUR-2B52R; O-1C272F/EUR-2B52R
Received for sequencing:	29/09/2016
Created:	04/10/2016
Last updated:	04/10/2016
VIBASys IDs: sample 30200, genome 30201, sequence viba_30202, sequencing info 30203	

Most Closely Related Sequences

sequence	virus name	Host	% Id.	# Ambig.	serotype	topotype	lineage	sublineage
viba_30003	2B/MAUR/2016	bovine	100.0	0	O	ME-SA	Ind-2001	d
viba_30015	3B/MAUR/2016	bovine	100.0	0	O	ME-SA	Ind-2001	d
viba_30011	3A/MAUR/2016	bovine	100.0	0	O	ME-SA	Ind-2001	d
viba_30019	5A/MAUR/2016	bovine	100.0	0	O	ME-SA	Ind-2001	d
viba_30032	F3/ROD/2016	bovine	99.8	0	O	ME-SA	Ind-2001	d
viba_30039	MUS02/19	bovine	99.8	0	O	ME-SA	Ind-2001	d
viba_30028	F2/ROD/2016	bovine	99.8	0	O	ME-SA	Ind-2001	d
viba_30007	2C/MAUR/2016	bovine	99.8	0	O	ME-SA	Ind-2001	d
viba_29999	1A/MAUR/2016	bovine	99.8	0	O	ME-SA	Ind-2001	d
viba_30024	F1/ROD/2016	bovine	99.8	0	O	ME-SA	Ind-2001	d

Most Closely Related Prototype Sequences

see http://www.wrlfmd.org/fmd_genotyping/prototypes.htm

sequence	virus name	Host	% Id.	# Ambig.	serotype	topotype	lineage	sublineage
viba_293	BHU/3/2009	cattle	94.2	0	O	ME-SA	Ind-2001	d
viba_541	OMN/7/2001	bovine	93.2	0	O	ME-SA	Ind-2001	b
viba_705	KUW/3/97	bovine	92.0	0	O	ME-SA	Ind-2001	a
viba_397	UAE/4/2008	gazelle	90.5	0	O	ME-SA	Ind-2001	c
viba_285	UKG/35/2001	porcine	89.4	0	O	ME-SA	PanAsia	
viba_766	IRN/31/2009	cattle	89.1	0	O	ME-SA	PanAsia-2	FAR-09
viba_650	IRN/8/2005	ovine	88.6	0	O	ME-SA	PanAsia-2	
viba_359	Manisa/TUR/69		88.6	0	O	ME-SA		
viba_719	IRN/88/2009		88.5	0	O	ME-SA	PanAsia-2	ANT-10
viba_666	IRN/18/2010	cattle	88.3	0	O	ME-SA	PanAsia-2	BAL-09

Virus sample name:	MUR/10/2016
Sender reference:	O/3A/MAU/2016/P0+2
Location of origin:	Cite La Cure, Mauritius Island
Country of origin:	Mauritius
Date of collection:	09/08/2016
Host species:	cattle
Serotype:	O
Topotype:	ME-SA
Lineage:	Ind-2001
Sublineage:	d
Sequence length:	633
Ambiguities:	0
Material submitted for sequencing:	BTy1
Harvest date of material:	23/09/2016
Primers:	O-1C244F/EUR-2B52R; O-1C272F/EUR-2B52R
Received for sequencing:	29/09/2016
Created:	04/10/2016
Last updated:	04/10/2016
VIBASys IDs: sample 30204, genome 30205, sequence viba_30206, sequencing info 30207	

Most Closely Related Sequences

sequence	virus name	Host	% Id.	# Ambig.	serotype	topotype	lineage	sublineage
viba_30003	2B/MAUR/2016	bovine	100.0	0	O	ME-SA	Ind-2001	d
viba_30015	3B/MAUR/2016	bovine	100.0	0	O	ME-SA	Ind-2001	d
viba_30011	3A/MAUR/2016	bovine	100.0	0	O	ME-SA	Ind-2001	d
viba_30019	5A/MAUR/2016	bovine	100.0	0	O	ME-SA	Ind-2001	d
viba_30032	F3/ROD/2016	bovine	99.8	0	O	ME-SA	Ind-2001	d
viba_30039	MUS02/19	bovine	99.8	0	O	ME-SA	Ind-2001	d
viba_30028	F2/ROD/2016	bovine	99.8	0	O	ME-SA	Ind-2001	d
viba_30007	2C/MAUR/2016	bovine	99.8	0	O	ME-SA	Ind-2001	d
viba_29999	1A/MAUR/2016	bovine	99.8	0	O	ME-SA	Ind-2001	d
viba_30024	F1/ROD/2016	bovine	99.8	0	O	ME-SA	Ind-2001	d

Most Closely Related Prototype Sequences

see http://www.wrlfmd.org/fmd_genotyping/prototypes.htm

sequence	virus name	Host	% Id.	# Ambig.	serotype	topotype	lineage	sublineage
viba_293	BHU/3/2009	cattle	94.2	0	O	ME-SA	Ind-2001	d
viba_541	OMN/7/2001	bovine	93.2	0	O	ME-SA	Ind-2001	b
viba_705	KUW/3/97	bovine	92.0	0	O	ME-SA	Ind-2001	a
viba_397	UAE/4/2008	gazelle	90.5	0	O	ME-SA	Ind-2001	c
viba_285	UKG/35/2001	porcine	89.4	0	O	ME-SA	PanAsia	
viba_766	IRN/31/2009	cattle	89.1	0	O	ME-SA	PanAsia-2	FAR-09
viba_650	IRN/8/2005	ovine	88.6	0	O	ME-SA	PanAsia-2	
viba_359	Manisa/TUR/69		88.6	0	O	ME-SA		
viba_719	IRN/88/2009		88.5	0	O	ME-SA	PanAsia-2	ANT-10
viba_666	IRN/18/2010	cattle	88.3	0	O	ME-SA	PanAsia-2	BAL-09

Virus sample name:	MUR/11/2016
Sender reference:	O/3B/MAU/2016
Location of origin:	Cite La Cure, Mauritius Island
Country of origin:	Mauritius
Date of collection:	09/08/2016
Host species:	cattle
Serotype:	O
Topotype:	ME-SA
Lineage:	Ind-2001
Sublineage:	d
Sequence length:	633
Ambiguities:	2
Material submitted for sequencing:	BTy1 24/09/2016 & BTy2
Harvest date of material:	27/09/2016
Primers:	O-1C244F/EUR-2B52R; O-1C272F/EUR-2B52R
Received for sequencing:	29/09/2016
Created:	04/10/2016
Last updated:	04/10/2016
VIBASys IDs: sample 30208, genome 30209, sequence viba_30210, sequencing info 30211	

Most Closely Related Sequences

sequence	virus name	Host	% Id.	# Ambig.	serotype	topotype	lineage	sublineage
viba_30003	2B/MAUR/2016	bovine	99.7	0	O	ME-SA	Ind-2001	d
viba_30015	3B/MAUR/2016	bovine	99.7	0	O	ME-SA	Ind-2001	d
viba_30011	3A/MAUR/2016	bovine	99.7	0	O	ME-SA	Ind-2001	d
viba_30019	5A/MAUR/2016	bovine	99.7	0	O	ME-SA	Ind-2001	d
viba_30032	F3/ROD/2016	bovine	99.5	0	O	ME-SA	Ind-2001	d
viba_30039	MUS02/19	bovine	99.5	0	O	ME-SA	Ind-2001	d
viba_30028	F2/ROD/2016	bovine	99.5	0	O	ME-SA	Ind-2001	d
viba_30007	2C/MAUR/2016	bovine	99.5	0	O	ME-SA	Ind-2001	d
viba_29999	1A/MAUR/2016	bovine	99.5	0	O	ME-SA	Ind-2001	d
viba_30024	F1/ROD/2016	bovine	99.5	0	O	ME-SA	Ind-2001	d

Most Closely Related Prototype Sequences

see http://www.wrlfmd.org/fmd_genotyping/prototypes.htm

sequence	virus name	Host	% Id.	# Ambig.	serotype	topotype	lineage	sublineage
viba_293	BHU/3/2009	cattle	93.8	0	O	ME-SA	Ind-2001	d
viba_541	OMN/7/2001	bovine	93.1	0	O	ME-SA	Ind-2001	b
viba_705	KUW/3/97	bovine	91.8	0	O	ME-SA	Ind-2001	a
viba_397	UAE/4/2008	gazelle	90.4	0	O	ME-SA	Ind-2001	c
viba_285	UKG/35/2001	porcine	89.3	0	O	ME-SA	PanAsia	
viba_766	IRN/31/2009	cattle	88.9	0	O	ME-SA	PanAsia-2	FAR-09
viba_650	IRN/8/2005	ovine	88.5	0	O	ME-SA	PanAsia-2	
viba_719	IRN/88/2009		88.3	0	O	ME-SA	PanAsia-2	ANT-10
viba_359	Manisa/TUR/69		88.3	0	O	ME-SA		
viba_666	IRN/18/2010	cattle	88.2	0	O	ME-SA	PanAsia-2	BAL-09

Virus sample name:	MUR/13/2016
Sender reference:	O/4A/MAU/2016
Location of origin:	Cite La Cure, Mauritius Island
Country of origin:	Mauritius
Date of collection:	09/08/2016
Host species:	cattle
Serotype:	O
Topotype:	ME-SA
Lineage:	Ind-2001
Sublineage:	d
Sequence length:	633
Ambiguities:	0
Material submitted for sequencing:	BTy1
Harvest date of material:	23/09/2016
Primers:	O-1C244F/EUR-2B52R; O-1C272F/EUR-2B52R
Received for sequencing:	29/09/2016
Created:	04/10/2016
Last updated:	04/10/2016
VIBASys IDs: sample 30212, genome 30213, sequence viba_30214, sequencing info 30215	

Most Closely Related Sequences

sequence	virus name	Host	% Id.	# Ambig.	serotype	topotype	lineage	sublineage
viba_30003	2B/MAUR/2016	bovine	100.0	0	O	ME-SA	Ind-2001	d
viba_30015	3B/MAUR/2016	bovine	100.0	0	O	ME-SA	Ind-2001	d
viba_30011	3A/MAUR/2016	bovine	100.0	0	O	ME-SA	Ind-2001	d
viba_30019	5A/MAUR/2016	bovine	100.0	0	O	ME-SA	Ind-2001	d
viba_30032	F3/ROD/2016	bovine	99.8	0	O	ME-SA	Ind-2001	d
viba_30039	MUS02/19	bovine	99.8	0	O	ME-SA	Ind-2001	d
viba_30028	F2/ROD/2016	bovine	99.8	0	O	ME-SA	Ind-2001	d
viba_30007	2C/MAUR/2016	bovine	99.8	0	O	ME-SA	Ind-2001	d
viba_29999	1A/MAUR/2016	bovine	99.8	0	O	ME-SA	Ind-2001	d
viba_30024	F1/ROD/2016	bovine	99.8	0	O	ME-SA	Ind-2001	d

Most Closely Related Prototype Sequences

see http://www.wrlfmd.org/fmd_genotyping/prototypes.htm

sequence	virus name	Host	% Id.	# Ambig.	serotype	topotype	lineage	sublineage
viba_293	BHU/3/2009	cattle	94.2	0	O	ME-SA	Ind-2001	d
viba_541	OMN/7/2001	bovine	93.2	0	O	ME-SA	Ind-2001	b
viba_705	KUW/3/97	bovine	92.0	0	O	ME-SA	Ind-2001	a
viba_397	UAE/4/2008	gazelle	90.5	0	O	ME-SA	Ind-2001	c
viba_285	UKG/35/2001	porcine	89.4	0	O	ME-SA	PanAsia	
viba_766	IRN/31/2009	cattle	89.1	0	O	ME-SA	PanAsia-2	FAR-09
viba_650	IRN/8/2005	ovine	88.6	0	O	ME-SA	PanAsia-2	
viba_359	Manisa/TUR/69		88.6	0	O	ME-SA		
viba_719	IRN/88/2009		88.5	0	O	ME-SA	PanAsia-2	ANT-10
viba_666	IRN/18/2010	cattle	88.3	0	O	ME-SA	PanAsia-2	BAL-09

Virus sample name:	MUR/14/2016
Sender reference:	O/4A/MAU/2016/P0+1
Location of origin:	Cite La Cure, Mauritius Island
Country of origin:	Mauritius
Date of collection:	09/08/2016
Host species:	cattle
Serotype:	O
Topotype:	ME-SA
Lineage:	Ind-2001
Sublineage:	d
Sequence length:	633
Ambiguities:	0
Material submitted for sequencing:	BTy1
Harvest date of material:	23/09/2016
Primers:	O-1C244F/EUR-2B52R; O-1C272F/EUR-2B52R
Received for sequencing:	29/09/2016
Created:	04/10/2016
Last updated:	04/10/2016
VIBASys IDs: sample 30216, genome 30217, sequence viba_30218, sequencing info 30219	

Most Closely Related Sequences

sequence	virus name	Host	% Id.	# Ambig.	serotype	topotype	lineage	sublineage
viba_30003	2B/MAUR/2016	bovine	100.0	0	O	ME-SA	Ind-2001	d
viba_30015	3B/MAUR/2016	bovine	100.0	0	O	ME-SA	Ind-2001	d
viba_30011	3A/MAUR/2016	bovine	100.0	0	O	ME-SA	Ind-2001	d
viba_30019	5A/MAUR/2016	bovine	100.0	0	O	ME-SA	Ind-2001	d
viba_30032	F3/ROD/2016	bovine	99.8	0	O	ME-SA	Ind-2001	d
viba_30039	MUS02/19	bovine	99.8	0	O	ME-SA	Ind-2001	d
viba_30028	F2/ROD/2016	bovine	99.8	0	O	ME-SA	Ind-2001	d
viba_30007	2C/MAUR/2016	bovine	99.8	0	O	ME-SA	Ind-2001	d
viba_29999	1A/MAUR/2016	bovine	99.8	0	O	ME-SA	Ind-2001	d
viba_30024	F1/ROD/2016	bovine	99.8	0	O	ME-SA	Ind-2001	d

Most Closely Related Prototype Sequences

see http://www.wrlfmd.org/fmd_genotyping/prototypes.htm

sequence	virus name	Host	% Id.	# Ambig.	serotype	topotype	lineage	sublineage
viba_293	BHU/3/2009	cattle	94.2	0	O	ME-SA	Ind-2001	d
viba_541	OMN/7/2001	bovine	93.2	0	O	ME-SA	Ind-2001	b
viba_705	KUW/3/97	bovine	92.0	0	O	ME-SA	Ind-2001	a
viba_397	UAE/4/2008	gazelle	90.5	0	O	ME-SA	Ind-2001	c
viba_285	UKG/35/2001	porcine	89.4	0	O	ME-SA	PanAsia	
viba_766	IRN/31/2009	cattle	89.1	0	O	ME-SA	PanAsia-2	FAR-09
viba_650	IRN/8/2005	ovine	88.6	0	O	ME-SA	PanAsia-2	
viba_359	Manisa/TUR/69		88.6	0	O	ME-SA		
viba_719	IRN/88/2009		88.5	0	O	ME-SA	PanAsia-2	ANT-10
viba_666	IRN/18/2010	cattle	88.3	0	O	ME-SA	PanAsia-2	BAL-09

Virus sample name:	MUR/15/2016
Sender reference:	O/4B/MAU/2016
Location of origin:	Cite La Cure, Mauritius Island
Country of origin:	Mauritius
Date of collection:	09/08/2016
Host species:	cattle
Serotype:	O
Topotype:	ME-SA
Lineage:	Ind-2001
Sublineage:	d
Sequence length:	633
Ambiguities:	0
Material submitted for sequencing:	BTy1
Harvest date of material:	24/09/2016
Primers:	O-1C244F/EUR-2B52R; O-1C272F/EUR-2B52R
Received for sequencing:	29/09/2016
Created:	04/10/2016
Last updated:	04/10/2016

VIBASys IDs: sample 30220, genome 30221, sequence viba_30222, sequencing info 30223

Most Closely Related Sequences

sequence	virus name	Host	% Id.	# Ambig.	serotype	topotype	lineage	sublineage
viba_30003	2B/MAUR/2016	bovine	100.0	0	O	ME-SA	Ind-2001	d
viba_30015	3B/MAUR/2016	bovine	100.0	0	O	ME-SA	Ind-2001	d
viba_30011	3A/MAUR/2016	bovine	100.0	0	O	ME-SA	Ind-2001	d
viba_30019	5A/MAUR/2016	bovine	100.0	0	O	ME-SA	Ind-2001	d
viba_30032	F3/ROD/2016	bovine	99.8	0	O	ME-SA	Ind-2001	d
viba_30039	MUS02/19	bovine	99.8	0	O	ME-SA	Ind-2001	d
viba_30028	F2/ROD/2016	bovine	99.8	0	O	ME-SA	Ind-2001	d
viba_30007	2C/MAUR/2016	bovine	99.8	0	O	ME-SA	Ind-2001	d
viba_29999	1A/MAUR/2016	bovine	99.8	0	O	ME-SA	Ind-2001	d
viba_30024	F1/ROD/2016	bovine	99.8	0	O	ME-SA	Ind-2001	d

Most Closely Related Prototype Sequences

see http://www.wrlfmd.org/fmd_genotyping/prototypes.htm

sequence	virus name	Host	% Id.	# Ambig.	serotype	topotype	lineage	sublineage
viba_293	BHU/3/2009	cattle	94.2	0	O	ME-SA	Ind-2001	d
viba_541	OMN/7/2001	bovine	93.2	0	O	ME-SA	Ind-2001	b
viba_705	KUW/3/97	bovine	92.0	0	O	ME-SA	Ind-2001	a
viba_397	UAE/4/2008	gazelle	90.5	0	O	ME-SA	Ind-2001	c
viba_285	UKG/35/2001	porcine	89.4	0	O	ME-SA	PanAsia	
viba_766	IRN/31/2009	cattle	89.1	0	O	ME-SA	PanAsia-2	FAR-09
viba_650	IRN/8/2005	ovine	88.6	0	O	ME-SA	PanAsia-2	
viba_359	Manisa/TUR/69		88.6	0	O	ME-SA		
viba_719	IRN/88/2009		88.5	0	O	ME-SA	PanAsia-2	ANT-10
viba_666	IRN/18/2010	cattle	88.3	0	O	ME-SA	PanAsia-2	BAL-09

Virus sample name:	MUR/16/2016
Sender reference:	O/4B/MAU/2016/P0+1
Location of origin:	Cite La Cure, Mauritius Island
Country of origin:	Mauritius
Date of collection:	09/08/2016
Host species:	cattle
Serotype:	O
Topotype:	ME-SA
Lineage:	Ind-2001
Sublineage:	d
Sequence length:	633
Ambiguities:	0
Material submitted for sequencing:	BTy1
Harvest date of material:	24/09/2016
Primers:	O-1C244F/EUR-2B52R; O-1C272F/EUR-2B52R
Received for sequencing:	29/09/2016
Created:	04/10/2016
Last updated:	04/10/2016
VIBASys IDs: sample 30224, genome 30225, sequence viba_30226, sequencing info 30227	

Most Closely Related Sequences

sequence	virus name	Host	% Id.	# Ambig.	serotype	topotype	lineage	sublineage
viba_30003	2B/MAUR/2016	bovine	100.0	0	O	ME-SA	Ind-2001	d
viba_30015	3B/MAUR/2016	bovine	100.0	0	O	ME-SA	Ind-2001	d
viba_30011	3A/MAUR/2016	bovine	100.0	0	O	ME-SA	Ind-2001	d
viba_30019	5A/MAUR/2016	bovine	100.0	0	O	ME-SA	Ind-2001	d
viba_30032	F3/ROD/2016	bovine	99.8	0	O	ME-SA	Ind-2001	d
viba_30039	MUS02/19	bovine	99.8	0	O	ME-SA	Ind-2001	d
viba_30028	F2/ROD/2016	bovine	99.8	0	O	ME-SA	Ind-2001	d
viba_30007	2C/MAUR/2016	bovine	99.8	0	O	ME-SA	Ind-2001	d
viba_29999	1A/MAUR/2016	bovine	99.8	0	O	ME-SA	Ind-2001	d
viba_30024	F1/ROD/2016	bovine	99.8	0	O	ME-SA	Ind-2001	d

Most Closely Related Prototype Sequences

see http://www.wrlfmd.org/fmd_genotyping/prototypes.htm

sequence	virus name	Host	% Id.	# Ambig.	serotype	topotype	lineage	sublineage
viba_293	BHU/3/2009	cattle	94.2	0	O	ME-SA	Ind-2001	d
viba_541	OMN/7/2001	bovine	93.2	0	O	ME-SA	Ind-2001	b
viba_705	KUW/3/97	bovine	92.0	0	O	ME-SA	Ind-2001	a
viba_397	UAE/4/2008	gazelle	90.5	0	O	ME-SA	Ind-2001	c
viba_285	UKG/35/2001	porcine	89.4	0	O	ME-SA	PanAsia	
viba_766	IRN/31/2009	cattle	89.1	0	O	ME-SA	PanAsia-2	FAR-09
viba_650	IRN/8/2005	ovine	88.6	0	O	ME-SA	PanAsia-2	
viba_359	Manisa/TUR/69		88.6	0	O	ME-SA		
viba_719	IRN/88/2009		88.5	0	O	ME-SA	PanAsia-2	ANT-10
viba_666	IRN/18/2010	cattle	88.3	0	O	ME-SA	PanAsia-2	BAL-09

Virus sample name:	MUR/17/2016
Sender reference:	O/5A/MAU/2016
Location of origin:	Cite La Cure, Mauritius Island
Country of origin:	Mauritius
Date of collection:	09/08/2016
Host species:	cattle
Serotype:	O
Topotype:	ME-SA
Lineage:	Ind-2001
Sublineage:	d
Sequence length:	633
Ambiguities:	0
Material submitted for sequencing:	BTy1
Harvest date of material:	24/09/2016
Primers:	O-1C244F/EUR-2B52R; O-1C272F/EUR-2B52R
Received for sequencing:	29/09/2016
Created:	04/10/2016
Last updated:	04/10/2016
VIBASys IDs: sample 30228, genome 30229, sequence viba_30230, sequencing info 30231	

Most Closely Related Sequences

sequence	virus name	Host	% Id.	# Ambig.	serotype	topotype	lineage	sublineage
viba_30003	2B/MAUR/2016	bovine	100.0	0	O	ME-SA	Ind-2001	d
viba_30015	3B/MAUR/2016	bovine	100.0	0	O	ME-SA	Ind-2001	d
viba_30011	3A/MAUR/2016	bovine	100.0	0	O	ME-SA	Ind-2001	d
viba_30019	5A/MAUR/2016	bovine	100.0	0	O	ME-SA	Ind-2001	d
viba_30032	F3/ROD/2016	bovine	99.8	0	O	ME-SA	Ind-2001	d
viba_30039	MUS02/19	bovine	99.8	0	O	ME-SA	Ind-2001	d
viba_30028	F2/ROD/2016	bovine	99.8	0	O	ME-SA	Ind-2001	d
viba_30007	2C/MAUR/2016	bovine	99.8	0	O	ME-SA	Ind-2001	d
viba_29999	1A/MAUR/2016	bovine	99.8	0	O	ME-SA	Ind-2001	d
viba_30024	F1/ROD/2016	bovine	99.8	0	O	ME-SA	Ind-2001	d

Most Closely Related Prototype Sequences

see http://www.wrlfmd.org/fmd_genotyping/prototypes.htm

sequence	virus name	Host	% Id.	# Ambig.	serotype	topotype	lineage	sublineage
viba_293	BHU/3/2009	cattle	94.2	0	O	ME-SA	Ind-2001	d
viba_541	OMN/7/2001	bovine	93.2	0	O	ME-SA	Ind-2001	b
viba_705	KUW/3/97	bovine	92.0	0	O	ME-SA	Ind-2001	a
viba_397	UAE/4/2008	gazelle	90.5	0	O	ME-SA	Ind-2001	c
viba_285	UKG/35/2001	porcine	89.4	0	O	ME-SA	PanAsia	
viba_766	IRN/31/2009	cattle	89.1	0	O	ME-SA	PanAsia-2	FAR-09
viba_650	IRN/8/2005	ovine	88.6	0	O	ME-SA	PanAsia-2	
viba_359	Manisa/TUR/69		88.6	0	O	ME-SA		
viba_719	IRN/88/2009		88.5	0	O	ME-SA	PanAsia-2	ANT-10
viba_666	IRN/18/2010	cattle	88.3	0	O	ME-SA	PanAsia-2	BAL-09

Virus sample name:	MUR/18/2016
Sender reference:	O/5A/MAU/2016/P0+1
Location of origin:	Cite La Cure, Mauritius Island
Country of origin:	Mauritius
Date of collection:	09/08/2016
Host species:	cattle
Serotype:	O
Topotype:	ME-SA
Lineage:	Ind-2001
Sublineage:	d
Sequence length:	633
Ambiguities:	0
Material submitted for sequencing:	BTy1
Harvest date of material:	24/09/2016
Primers:	O-1C244F/EUR-2B52R; O-1C272F/EUR-2B52R
Received for sequencing:	29/09/2016
Created:	04/10/2016
Last updated:	04/10/2016
VIBASys IDs: sample 30232, genome 30233, sequence viba_30234, sequencing info 30235	

Most Closely Related Sequences

sequence	virus name	Host	% Id.	# Ambig.	serotype	topotype	lineage	sublineage
viba_30003	2B/MAUR/2016	bovine	100.0	0	O	ME-SA	Ind-2001	d
viba_30015	3B/MAUR/2016	bovine	100.0	0	O	ME-SA	Ind-2001	d
viba_30011	3A/MAUR/2016	bovine	100.0	0	O	ME-SA	Ind-2001	d
viba_30019	5A/MAUR/2016	bovine	100.0	0	O	ME-SA	Ind-2001	d
viba_30032	F3/ROD/2016	bovine	99.8	0	O	ME-SA	Ind-2001	d
viba_30039	MUS02/19	bovine	99.8	0	O	ME-SA	Ind-2001	d
viba_30028	F2/ROD/2016	bovine	99.8	0	O	ME-SA	Ind-2001	d
viba_30007	2C/MAUR/2016	bovine	99.8	0	O	ME-SA	Ind-2001	d
viba_29999	1A/MAUR/2016	bovine	99.8	0	O	ME-SA	Ind-2001	d
viba_30024	F1/ROD/2016	bovine	99.8	0	O	ME-SA	Ind-2001	d

Most Closely Related Prototype Sequences

see http://www.wrlfmd.org/fmd_genotyping/prototypes.htm

sequence	virus name	Host	% Id.	# Ambig.	serotype	topotype	lineage	sublineage
viba_293	BHU/3/2009	cattle	94.2	0	O	ME-SA	Ind-2001	d
viba_541	OMN/7/2001	bovine	93.2	0	O	ME-SA	Ind-2001	b
viba_705	KUW/3/97	bovine	92.0	0	O	ME-SA	Ind-2001	a
viba_397	UAE/4/2008	gazelle	90.5	0	O	ME-SA	Ind-2001	c
viba_285	UKG/35/2001	porcine	89.4	0	O	ME-SA	PanAsia	
viba_766	IRN/31/2009	cattle	89.1	0	O	ME-SA	PanAsia-2	FAR-09
viba_650	IRN/8/2005	ovine	88.6	0	O	ME-SA	PanAsia-2	
viba_359	Manisa/TUR/69		88.6	0	O	ME-SA		
viba_719	IRN/88/2009		88.5	0	O	ME-SA	PanAsia-2	ANT-10
viba_666	IRN/18/2010	cattle	88.3	0	O	ME-SA	PanAsia-2	BAL-09

Virus sample name:	MUR/19/2016
Sender reference:	O/F1/ROD/2016
Location of origin:	Soupirs, Rodrigues Island
Country of origin:	Mauritius
Date of collection:	15/08/2016
Host species:	cattle
Serotype:	O
Topotype:	ME-SA
Lineage:	Ind-2001
Sublineage:	d
Sequence length:	633
Ambiguities:	0
Material submitted for sequencing:	BTy1
Harvest date of material:	22/09/2016
Primers:	O-1C244F/EUR-2B52R; O-1C272F/EUR-2B52R
Received for sequencing:	29/09/2016
Created:	04/10/2016
Last updated:	04/10/2016
VIBASys IDs: sample 30236, genome 30237, sequence viba_30238, sequencing info 30239	

Most Closely Related Sequences

sequence	virus name	Host	% Id.	# Ambig.	serotype	topotype	lineage	sublineage
viba_30032	F3/ROD/2016	bovine	100.0	0	O	ME-SA	Ind-2001	d
viba_30028	F2/ROD/2016	bovine	100.0	0	O	ME-SA	Ind-2001	d
viba_30024	F1/ROD/2016	bovine	100.0	0	O	ME-SA	Ind-2001	d
viba_30258	MUR/24/2016	cattle	100.0	0	O	ME-SA	Ind-2001	d
viba_30003	2B/MAUR/2016	bovine	99.8	0	O	ME-SA	Ind-2001	d
viba_30015	3B/MAUR/2016	bovine	99.8	0	O	ME-SA	Ind-2001	d
viba_30011	3A/MAUR/2016	bovine	99.8	0	O	ME-SA	Ind-2001	d
viba_30019	5A/MAUR/2016	bovine	99.8	0	O	ME-SA	Ind-2001	d
viba_30039	MUS02/19	bovine	99.7	0	O	ME-SA	Ind-2001	d
viba_30007	2C/MAUR/2016	bovine	99.7	0	O	ME-SA	Ind-2001	d

Most Closely Related Prototype Sequences

see http://www.wrlfmd.org/fmd_genotyping/prototypes.htm

sequence	virus name	Host	% Id.	# Ambig.	serotype	topotype	lineage	sublineage
viba_293	BHU/3/2009	cattle	94.0	0	O	ME-SA	Ind-2001	d
viba_541	OMN/7/2001	bovine	93.1	0	O	ME-SA	Ind-2001	b
viba_705	KUW/3/97	bovine	91.5	0	O	ME-SA	Ind-2001	a
viba_397	UAE/4/2008	gazelle	90.1	0	O	ME-SA	Ind-2001	c
viba_766	IRN/31/2009	cattle	89.3	0	O	ME-SA	PanAsia-2	FAR-09
viba_285	UKG/35/2001	porcine	89.2	0	O	ME-SA	PanAsia	
viba_359	Manisa/TUR/69		88.8	0	O	ME-SA		
viba_719	IRN/88/2009		88.3	0	O	ME-SA	PanAsia-2	ANT-10
viba_650	IRN/8/2005	ovine	88.2	0	O	ME-SA	PanAsia-2	
viba_666	IRN/18/2010	cattle	88.1	0	O	ME-SA	PanAsia-2	BAL-09

Virus sample name:	MUR/20/2016
Sender reference:	O/F1/ROD/2016/P0+1
Location of origin:	Soupirs, Rodrigues Island
Country of origin:	Mauritius
Date of collection:	15/08/2016
Host species:	cattle
Serotype:	O
Topotype:	ME-SA
Lineage:	Ind-2001
Sublineage:	d
Sequence length:	633
Ambiguities:	0
Material submitted for sequencing:	BTy1
Harvest date of material:	24/09/2016
Primers:	O-1C244F/EUR-2B52R; O-1C272F/EUR-2B52R
Received for sequencing:	29/09/2016
Created:	04/10/2016
Last updated:	04/10/2016
VIBASys IDs: sample 30240, genome 30241, sequence viba_30242, sequencing info 30243	

Most Closely Related Sequences

sequence	virus name	Host	% Id.	# Ambig.	serotype	topotype	lineage	sublineage
viba_30032	F3/ROD/2016	bovine	100.0	0	O	ME-SA	Ind-2001	d
viba_30028	F2/ROD/2016	bovine	100.0	0	O	ME-SA	Ind-2001	d
viba_30024	F1/ROD/2016	bovine	100.0	0	O	ME-SA	Ind-2001	d
viba_30258	MUR/24/2016	cattle	100.0	0	O	ME-SA	Ind-2001	d
viba_30003	2B/MAUR/2016	bovine	99.8	0	O	ME-SA	Ind-2001	d
viba_30015	3B/MAUR/2016	bovine	99.8	0	O	ME-SA	Ind-2001	d
viba_30011	3A/MAUR/2016	bovine	99.8	0	O	ME-SA	Ind-2001	d
viba_30019	5A/MAUR/2016	bovine	99.8	0	O	ME-SA	Ind-2001	d
viba_30039	MUS02/19	bovine	99.7	0	O	ME-SA	Ind-2001	d
viba_30007	2C/MAUR/2016	bovine	99.7	0	O	ME-SA	Ind-2001	d

Most Closely Related Prototype Sequences

see http://www.wrlfmd.org/fmd_genotyping/prototypes.htm

sequence	virus name	Host	% Id.	# Ambig.	serotype	topotype	lineage	sublineage
viba_293	BHU/3/2009	cattle	94.0	0	O	ME-SA	Ind-2001	d
viba_541	OMN/7/2001	bovine	93.1	0	O	ME-SA	Ind-2001	b
viba_705	KUW/3/97	bovine	91.5	0	O	ME-SA	Ind-2001	a
viba_397	UAE/4/2008	gazelle	90.1	0	O	ME-SA	Ind-2001	c
viba_766	IRN/31/2009	cattle	89.3	0	O	ME-SA	PanAsia-2	FAR-09
viba_285	UKG/35/2001	porcine	89.2	0	O	ME-SA	PanAsia	
viba_359	Manisa/TUR/69		88.8	0	O	ME-SA		
viba_719	IRN/88/2009		88.3	0	O	ME-SA	PanAsia-2	ANT-10
viba_650	IRN/8/2005	ovine	88.2	0	O	ME-SA	PanAsia-2	
viba_666	IRN/18/2010	cattle	88.1	0	O	ME-SA	PanAsia-2	BAL-09

Virus sample name:	MUR/21/2016
Sender reference:	O/F2/ROD/2016
Location of origin:	Les Choux, Rodrigues Island
Country of origin:	Mauritius
Date of collection:	15/08/2016
Host species:	cattle
Serotype:	O
Topotype:	ME-SA
Lineage:	Ind-2001
Sublineage:	d
Sequence length:	633
Ambiguities:	0
Material submitted for sequencing:	BTy1
Harvest date of material:	22/09/2016
Primers:	O-1C244F/EUR-2B52R; O-1C272F/EUR-2B52R
Received for sequencing:	29/09/2016
Created:	04/10/2016
Last updated:	04/10/2016

VIBASys IDs: sample 30244, genome 30245, sequence viba_30246, sequencing info 30247

Most Closely Related Sequences

sequence	virus name	Host	% Id.	# Ambig.	serotype	topotype	lineage	sublineage
viba_30032	F3/ROD/2016	bovine	100.0	0	O	ME-SA	Ind-2001	d
viba_30028	F2/ROD/2016	bovine	100.0	0	O	ME-SA	Ind-2001	d
viba_30024	F1/ROD/2016	bovine	100.0	0	O	ME-SA	Ind-2001	d
viba_30258	MUR/24/2016	cattle	100.0	0	O	ME-SA	Ind-2001	d
viba_30003	2B/MAUR/2016	bovine	99.8	0	O	ME-SA	Ind-2001	d
viba_30015	3B/MAUR/2016	bovine	99.8	0	O	ME-SA	Ind-2001	d
viba_30011	3A/MAUR/2016	bovine	99.8	0	O	ME-SA	Ind-2001	d
viba_30019	5A/MAUR/2016	bovine	99.8	0	O	ME-SA	Ind-2001	d
viba_30039	MUS02/19	bovine	99.7	0	O	ME-SA	Ind-2001	d
viba_30007	2C/MAUR/2016	bovine	99.7	0	O	ME-SA	Ind-2001	d

Most Closely Related Prototype Sequences

see http://www.wrlfmd.org/fmd_genotyping/prototypes.htm

sequence	virus name	Host	% Id.	# Ambig.	serotype	topotype	lineage	sublineage
viba_293	BHU/3/2009	cattle	94.0	0	O	ME-SA	Ind-2001	d
viba_541	OMN/7/2001	bovine	93.1	0	O	ME-SA	Ind-2001	b
viba_705	KUW/3/97	bovine	91.5	0	O	ME-SA	Ind-2001	a
viba_397	UAE/4/2008	gazelle	90.1	0	O	ME-SA	Ind-2001	c
viba_766	IRN/31/2009	cattle	89.3	0	O	ME-SA	PanAsia-2	FAR-09
viba_285	UKG/35/2001	porcine	89.2	0	O	ME-SA	PanAsia	
viba_359	Manisa/TUR/69		88.8	0	O	ME-SA		
viba_719	IRN/88/2009		88.3	0	O	ME-SA	PanAsia-2	ANT-10
viba_650	IRN/8/2005	ovine	88.2	0	O	ME-SA	PanAsia-2	
viba_666	IRN/18/2010	cattle	88.1	0	O	ME-SA	PanAsia-2	BAL-09

Virus sample name:	MUR/22/2016
Sender reference:	O/F2/ROD/2016/P0+1
Location of origin:	Les Choux, Rodrigues Island
Country of origin:	Mauritius
Date of collection:	15/08/2016
Host species:	cattle
Serotype:	O
Topotype:	ME-SA
Lineage:	Ind-2001
Sublineage:	d
Sequence length:	633
Ambiguities:	0
Material submitted for sequencing:	BTy1
Harvest date of material:	24/09/2016
Primers:	O-1C244F/EUR-2B52R; O-1C272F/EUR-2B52R
Received for sequencing:	29/09/2016
Created:	04/10/2016
Last updated:	04/10/2016
VIBASys IDs: sample 30248, genome 30249, sequence viba_30250, sequencing info 30251	

Most Closely Related Sequences

sequence	virus name	Host	% Id.	# Ambig.	serotype	topotype	lineage	sublineage
viba_30032	F3/ROD/2016	bovine	100.0	0	O	ME-SA	Ind-2001	d
viba_30028	F2/ROD/2016	bovine	100.0	0	O	ME-SA	Ind-2001	d
viba_30024	F1/ROD/2016	bovine	100.0	0	O	ME-SA	Ind-2001	d
viba_30258	MUR/24/2016	cattle	100.0	0	O	ME-SA	Ind-2001	d
viba_30003	2B/MAUR/2016	bovine	99.8	0	O	ME-SA	Ind-2001	d
viba_30015	3B/MAUR/2016	bovine	99.8	0	O	ME-SA	Ind-2001	d
viba_30011	3A/MAUR/2016	bovine	99.8	0	O	ME-SA	Ind-2001	d
viba_30019	5A/MAUR/2016	bovine	99.8	0	O	ME-SA	Ind-2001	d
viba_30039	MUS02/19	bovine	99.7	0	O	ME-SA	Ind-2001	d
viba_30007	2C/MAUR/2016	bovine	99.7	0	O	ME-SA	Ind-2001	d

Most Closely Related Prototype Sequences

see http://www.wrlfmd.org/fmd_genotyping/prototypes.htm

sequence	virus name	Host	% Id.	# Ambig.	serotype	topotype	lineage	sublineage
viba_293	BHU/3/2009	cattle	94.0	0	O	ME-SA	Ind-2001	d
viba_541	OMN/7/2001	bovine	93.1	0	O	ME-SA	Ind-2001	b
viba_705	KUW/3/97	bovine	91.5	0	O	ME-SA	Ind-2001	a
viba_397	UAE/4/2008	gazelle	90.1	0	O	ME-SA	Ind-2001	c
viba_766	IRN/31/2009	cattle	89.3	0	O	ME-SA	PanAsia-2	FAR-09
viba_285	UKG/35/2001	porcine	89.2	0	O	ME-SA	PanAsia	
viba_359	Manisa/TUR/69		88.8	0	O	ME-SA		
viba_719	IRN/88/2009		88.3	0	O	ME-SA	PanAsia-2	ANT-10
viba_650	IRN/8/2005	ovine	88.2	0	O	ME-SA	PanAsia-2	
viba_666	IRN/18/2010	cattle	88.1	0	O	ME-SA	PanAsia-2	BAL-09

Virus sample name:	MUR/23/2016
Sender reference:	O/F3/ROD/2016
Location of origin:	Citron Donis, Rodrigues Island
Country of origin:	Mauritius
Date of collection:	15/08/2016
Host species:	cattle
Serotype:	O
Topotype:	ME-SA
Lineage:	Ind-2001
Sublineage:	d
Sequence length:	633
Ambiguities:	0
Material submitted for sequencing:	BTy1
Harvest date of material:	22/09/2016
Primers:	O-1C244F/EUR-2B52R; O-1C272F/EUR-2B52R
Received for sequencing:	29/09/2016
Created:	04/10/2016
Last updated:	04/10/2016

VIBASys IDs: sample 30252, genome 30253, sequence viba_30254, sequencing info 30255

Most Closely Related Sequences

sequence	virus name	Host	% Id.	# Ambig.	serotype	topotype	lineage	sublineage
viba_30032	F3/ROD/2016	bovine	100.0	0	O	ME-SA	Ind-2001	d
viba_30028	F2/ROD/2016	bovine	100.0	0	O	ME-SA	Ind-2001	d
viba_30024	F1/ROD/2016	bovine	100.0	0	O	ME-SA	Ind-2001	d
viba_30258	MUR/24/2016	cattle	100.0	0	O	ME-SA	Ind-2001	d
viba_30003	2B/MAUR/2016	bovine	99.8	0	O	ME-SA	Ind-2001	d
viba_30015	3B/MAUR/2016	bovine	99.8	0	O	ME-SA	Ind-2001	d
viba_30011	3A/MAUR/2016	bovine	99.8	0	O	ME-SA	Ind-2001	d
viba_30019	5A/MAUR/2016	bovine	99.8	0	O	ME-SA	Ind-2001	d
viba_30039	MUS02/19	bovine	99.7	0	O	ME-SA	Ind-2001	d
viba_30007	2C/MAUR/2016	bovine	99.7	0	O	ME-SA	Ind-2001	d

Most Closely Related Prototype Sequences

see http://www.wrlfmd.org/fmd_genotyping/prototypes.htm

sequence	virus name	Host	% Id.	# Ambig.	serotype	topotype	lineage	sublineage
viba_293	BHU/3/2009	cattle	94.0	0	O	ME-SA	Ind-2001	d
viba_541	OMN/7/2001	bovine	93.1	0	O	ME-SA	Ind-2001	b
viba_705	KUW/3/97	bovine	91.5	0	O	ME-SA	Ind-2001	a
viba_397	UAE/4/2008	gazelle	90.1	0	O	ME-SA	Ind-2001	c
viba_766	IRN/31/2009	cattle	89.3	0	O	ME-SA	PanAsia-2	FAR-09
viba_285	UKG/35/2001	porcine	89.2	0	O	ME-SA	PanAsia	
viba_359	Manisa/TUR/69		88.8	0	O	ME-SA		
viba_719	IRN/88/2009		88.3	0	O	ME-SA	PanAsia-2	ANT-10
viba_650	IRN/8/2005	ovine	88.2	0	O	ME-SA	PanAsia-2	
viba_666	IRN/18/2010	cattle	88.1	0	O	ME-SA	PanAsia-2	BAL-09

Virus sample name:	MUR/24/2016
Sender reference:	O/F3/ROD/2016/P0+1
Location of origin:	Citron Donis, Rodrigues Island
Country of origin:	Mauritius
Date of collection:	15/08/2016
Host species:	cattle
Serotype:	O
Topotype:	ME-SA
Lineage:	Ind-2001
Sublineage:	d
Sequence length:	633
Ambiguities:	0
Material submitted for sequencing:	BTy1
Harvest date of material:	24/09/2016
Primers:	O-1C244F/EUR-2B52R; O-1C272F/EUR-2B52R
Received for sequencing:	29/09/2016
Created:	04/10/2016
Last updated:	04/10/2016
VIBASys IDs: sample 30256, genome 30257, sequence viba_30258, sequencing info 30259	

Most Closely Related Sequences

sequence	virus name	Host	% Id.	# Ambig.	serotype	topotype	lineage	sublineage
viba_30032	F3/ROD/2016	bovine	100.0	0	O	ME-SA	Ind-2001	d
viba_30028	F2/ROD/2016	bovine	100.0	0	O	ME-SA	Ind-2001	d
viba_30024	F1/ROD/2016	bovine	100.0	0	O	ME-SA	Ind-2001	d
viba_30003	2B/MAUR/2016	bovine	99.8	0	O	ME-SA	Ind-2001	d
viba_30015	3B/MAUR/2016	bovine	99.8	0	O	ME-SA	Ind-2001	d
viba_30011	3A/MAUR/2016	bovine	99.8	0	O	ME-SA	Ind-2001	d
viba_30019	5A/MAUR/2016	bovine	99.8	0	O	ME-SA	Ind-2001	d
viba_30039	MUS02/19	bovine	99.7	0	O	ME-SA	Ind-2001	d
viba_30007	2C/MAUR/2016	bovine	99.7	0	O	ME-SA	Ind-2001	d
viba_29999	1A/MAUR/2016	bovine	99.7	0	O	ME-SA	Ind-2001	d

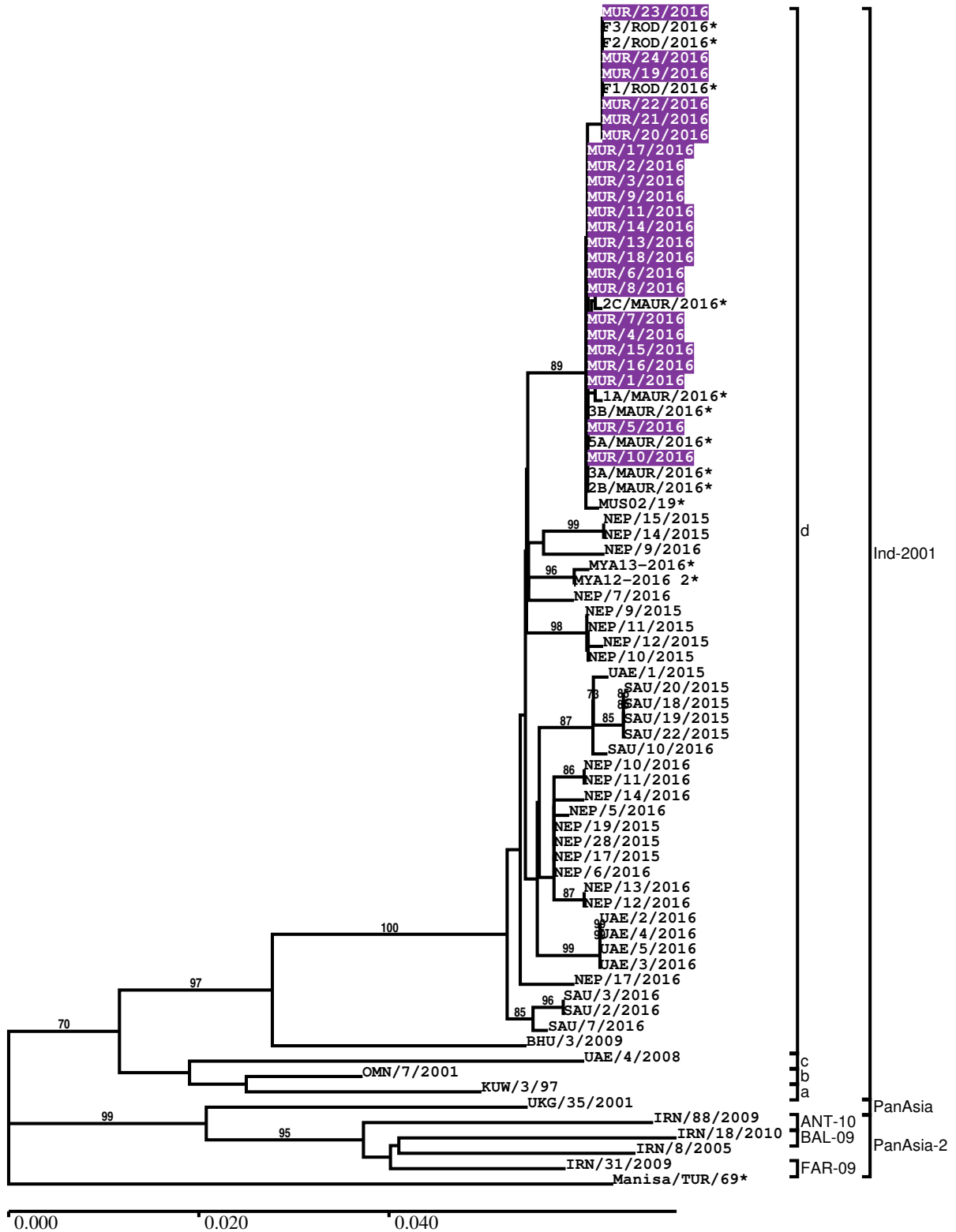
Most Closely Related Prototype Sequences

see http://www.wrlfmd.org/fmd_genotyping/prototypes.htm

sequence	virus name	Host	% Id.	# Ambig.	serotype	topotype	lineage	sublineage
viba_293	BHU/3/2009	cattle	94.0	0	O	ME-SA	Ind-2001	d
viba_541	OMN/7/2001	bovine	93.1	0	O	ME-SA	Ind-2001	b
viba_705	KUW/3/97	bovine	91.5	0	O	ME-SA	Ind-2001	a
viba_397	UAE/4/2008	gazelle	90.1	0	O	ME-SA	Ind-2001	c
viba_766	IRN/31/2009	cattle	89.3	0	O	ME-SA	PanAsia-2	FAR-09
viba_285	UKG/35/2001	porcine	89.2	0	O	ME-SA	PanAsia	
viba_359	Manisa/TUR/69		88.8	0	O	ME-SA		
viba_719	IRN/88/2009		88.3	0	O	ME-SA	PanAsia-2	ANT-10
viba_650	IRN/8/2005	ovine	88.2	0	O	ME-SA	PanAsia-2	
viba_666	IRN/18/2010	cattle	88.1	0	O	ME-SA	PanAsia-2	BAL-09

Report on FMDV O in Mauritius in 2016

Batch: WRLFMD/2016/00030



*, not a WRLFMD Reference Number

Analysis Parameters

VP1 subsequence extractor:	vp1_O
Query sequence set:	WRLFMD/2016/00030-Mauritius-O (23 sequences)
Sequence database set:	allseqs_O (3094 sequences)
Prototype sequence set:	!prototypes_O (47 sequences)
Number of related sequences reported:	10
Minimal VP1 subsequence match length	600
Sequence alignment method:	muscle (default parameters)
Sequence alignment length:	633
Phylogeny reconstruction method:	fdnadist, fneighbor
Number of bootstrap samples:	1000
Random seed for bootstrapping:	1
Displaying bootstrap values above:	70.0%
Number of sequences in tree capped at:	100
Number of prototype sequences in tree:	10
VIBASys version:	reflabs-1.1.0

Sequences in the Phylogenetic Tree

All sequences in the tree are in taxonomic group FMDV/O/ME-SA

label	accession	host(s)	lab	country	taxonomic information
MUR/23/2016	n/a	cattle	WRLFMD	Mauritius	Ind-2001/d
F3/ROD/2016*	n/a	bovine	ANSES	Mauritius	Ind-2001/d
F2/ROD/2016*	n/a	bovine	ANSES	Mauritius	Ind-2001/d
MUR/24/2016	n/a	cattle	WRLFMD	Mauritius	Ind-2001/d
MUR/19/2016	n/a	cattle	WRLFMD	Mauritius	Ind-2001/d
F1/ROD/2016*	n/a	bovine	ANSES	Mauritius	Ind-2001/d
MUR/22/2016	n/a	cattle	WRLFMD	Mauritius	Ind-2001/d
MUR/21/2016	n/a	cattle	WRLFMD	Mauritius	Ind-2001/d
MUR/20/2016	n/a	cattle	WRLFMD	Mauritius	Ind-2001/d
MUR/17/2016	n/a	cattle	WRLFMD	Mauritius	Ind-2001/d
MUR/2/2016	n/a	cattle	WRLFMD	Mauritius	Ind-2001/d
MUR/3/2016	n/a	cattle	WRLFMD	Mauritius	Ind-2001/d
MUR/9/2016	n/a	cattle	WRLFMD	Mauritius	Ind-2001/d
MUR/11/2016	n/a	cattle	WRLFMD	Mauritius	Ind-2001/d
MUR/14/2016	n/a	cattle	WRLFMD	Mauritius	Ind-2001/d
MUR/13/2016	n/a	cattle	WRLFMD	Mauritius	Ind-2001/d
MUR/18/2016	n/a	cattle	WRLFMD	Mauritius	Ind-2001/d
MUR/6/2016	n/a	cattle	WRLFMD	Mauritius	Ind-2001/d
MUR/8/2016	n/a	cattle	WRLFMD	Mauritius	Ind-2001/d
2C/MAUR/2016*	n/a	bovine	ANSES	Mauritius	Ind-2001/d
MUR/7/2016	n/a	cattle	WRLFMD	Mauritius	Ind-2001/d
MUR/4/2016	n/a	cattle	WRLFMD	Mauritius	Ind-2001/d
MUR/15/2016	n/a	cattle	WRLFMD	Mauritius	Ind-2001/d
MUR/16/2016	n/a	cattle	WRLFMD	Mauritius	Ind-2001/d
MUR/1/2016	n/a	cattle	WRLFMD	Mauritius	Ind-2001/d
1A/MAUR/2016*	n/a	bovine	ANSES	Mauritius	Ind-2001/d
3B/MAUR/2016*	n/a	bovine	ANSES	Mauritius	Ind-2001/d
MUR/5/2016	n/a	cattle	WRLFMD	Mauritius	Ind-2001/d
5A/MAUR/2016*	n/a	bovine	ANSES	Mauritius	Ind-2001/d
MUR/10/2016	n/a	cattle	WRLFMD	Mauritius	Ind-2001/d
3A/MAUR/2016*	n/a	bovine	ANSES	Mauritius	Ind-2001/d
2B/MAUR/2016*	n/a	bovine	ANSES	Mauritius	Ind-2001/d
MUS02/19*	n/a	bovine	BVI	Mauritius	Ind-2001/d
NEP/15/2015	n/a	cattle	WRLFMD	Nepal	Ind-2001/d
NEP/14/2015	n/a	cattle	WRLFMD	Nepal	Ind-2001/d
NEP/9/2016	n/a	porcine	WRLFMD	Nepal	Ind-2001/d

continued on next page

label	accession	host(s)	lab	country	taxonomic information
MYA13-2016*	n/a	n/a	TRRL	Myanmar	Ind-2001/d
MYA12-2016 2*	n/a	n/a	TRRL	Myanmar	Ind-2001/d
NEP/7/2016	n/a	cattle	WRLFMD	Nepal	Ind-2001/d
NEP/9/2015	n/a	cattle	WRLFMD	Nepal	Ind-2001/d
NEP/11/2015	n/a	cattle	WRLFMD	Nepal	Ind-2001/d
NEP/12/2015	n/a	cattle	WRLFMD	Nepal	Ind-2001/d
NEP/10/2015	n/a	cattle	WRLFMD	Nepal	Ind-2001/d
UAE/1/2015	n/a	gazelle	WRLFMD	United Arab Emirates	Ind-2001/d
SAU/20/2015	n/a	bovine	WRLFMD	Saudi Arabia	Ind-2001/d
SAU/18/2015	n/a	bovine	WRLFMD	Saudi Arabia	Ind-2001/d
SAU/19/2015	n/a	bovine	WRLFMD	Saudi Arabia	Ind-2001/d
SAU/22/2015	n/a	bovine	WRLFMD	Saudi Arabia	Ind-2001/d
SAU/10/2016	n/a	bovine	WRLFMD	Saudi Arabia	Ind-2001/d
NEP/10/2016	n/a	goats	WRLFMD	Nepal	Ind-2001/d
NEP/11/2016	n/a	goats	WRLFMD	Nepal	Ind-2001/d
NEP/14/2016	n/a	water buffalo	WRLFMD	Nepal	Ind-2001/d
NEP/5/2016	n/a	cattle	WRLFMD	Nepal	Ind-2001/d
NEP/19/2015	n/a	cattle	WRLFMD	Nepal	Ind-2001/d
NEP/28/2015	n/a	cattle	WRLFMD	Nepal	Ind-2001/d
NEP/17/2015	n/a	cattle	WRLFMD	Nepal	Ind-2001/d
NEP/6/2016	n/a	cattle	WRLFMD	Nepal	Ind-2001/d
NEP/13/2016	n/a	cattle	WRLFMD	Nepal	Ind-2001/d
NEP/12/2016	n/a	cattle	WRLFMD	Nepal	Ind-2001/d
UAE/2/2016	n/a	cattle	WRLFMD	United Arab Emirates	Ind-2001/d
UAE/4/2016	n/a	cattle	WRLFMD	United Arab Emirates	Ind-2001/d
UAE/5/2016	n/a	cattle	WRLFMD	United Arab Emirates	Ind-2001/d
UAE/3/2016	n/a	cattle	WRLFMD	United Arab Emirates	Ind-2001/d
NEP/17/2016	n/a	cattle	WRLFMD	Nepal	Ind-2001/d
SAU/3/2016	n/a	bovine	WRLFMD	Saudi Arabia	Ind-2001/d
SAU/2/2016	n/a	bovine	WRLFMD	Saudi Arabia	Ind-2001/d
SAU/7/2016	n/a	bovine	WRLFMD	Saudi Arabia	Ind-2001/d
BHU/3/2009	KM921814	cattle	WRLFMD	Bhutan	Ind-2001/d
UAE/4/2008	KM921876	gazelle	WRLFMD	United Arab Emirates	Ind-2001/c
OMN/7/2001	DQ164941	bovine	WRLFMD	Oman	Ind-2001/b
KUW/3/97	DQ164904	bovine	WRLFMD	Kuwait	Ind-2001/a
UKG/35/2001	AJ539141	porcine	PIADC	United Kingdom	PanAsia
IRN/88/2009	n/a	n/a	WRLFMD	Iran	PanAsia-2/ANT-10
IRN/18/2010	n/a	cattle	WRLFMD	Iran	PanAsia-2/BAL-09
IRN/8/2005	n/a	ovine	WRLFMD	Iran	PanAsia-2
IRN/31/2009	n/a	cattle	WRLFMD	Iran	PanAsia-2/FAR-09
Manisa/TUR/69*	AY593823	n/a	PIADC	Turkey	

*, not a WRLFMD Reference Number

n/a, not available