

# FAO World Reference Laboratory for Foot-and-Mouth Disease (WRLFMD)

## Genotyping Report

FMDV serotype: O  
Country: Hong Kong SAR  
Year: 2018  
Batch: WRLFMD/2018/00025  
No. of sequences: 7  
Report date: 27th September 2018  
Report generated by: Nick Knowles  
Report checked by: Kasia Bankowska



Copyright © 2018 The Pirbright Institute, Ash Road, Pirbright, Woking GU24 0NF, United Kingdom.

www: <http://www.wrlfmd.org/>

email: [reporting@pirbright.ac.uk](mailto:reporting@pirbright.ac.uk)

The contents of this report should not be reproduced without permission.

Virus sample name:	HKN/11/2018
Sender reference:	18-08292-02
Location of origin:	Sheung Tseun San Tseun, Pat Heung, Yuen Long, New Territories
Country of origin:	Hong Kong SAR
Date of collection:	07/06/2018
Host species:	porcine
Serotype:	O
Topotype:	CATHAY
Lineage:	
Sublineage:	
Sequence length:	633
Ambiguities:	0
Material submitted for sequencing:	LFBK1
Harvest date of material:	18/09/2018
Primers:	O-1C244F/EUR-2B52R; O-1C272F/EUR-2B52R; FMD-3161F/FMD-4303R
Received for sequencing:	26/09/2018
Created:	27/09/2018
Last updated:	27/09/2018
VIBASys IDs: sample 37458, genome 37459, sequence viba_37460, sequencing info 37461	

#### Most Closely Related Sequences

sequence	virus name	Host	% Id.	# Ambig.	serotype	topotype	lineage	sublineage
viba_36384	HKN/4/2018	porcine	99.4	0	O	CATHAY		
viba_37476	HKN/15/2018	porcine	99.2	0	O	CATHAY		
viba_37464	HKN/12/2018	porcine	99.1	0	O	CATHAY		
viba_37472	HKN/14/2018	porcine	99.1	0	O	CATHAY		
viba_37484	HKN/17/2018	porcine	98.9	0	O	CATHAY		
viba_37480	HKN/16/2018	porcine	98.7	0	O	CATHAY		
viba_35658	HKN/11/2017	porcine	98.6	0	O	CATHAY		
viba_35662	HKN/12/2017	porcine	98.4	0	O	CATHAY		
viba_35918	HKN/5/2017	porcine	98.3	0	O	CATHAY		
viba_34909	HKN/1/2017	porcine	98.3	0	O	CATHAY		

#### Most Closely Related Prototype Sequences

see [http://www.wrlfmd.org/fmd\\_genotyping/prototypes.htm](http://www.wrlfmd.org/fmd_genotyping/prototypes.htm)

sequence	virus name	Host	% Id.	# Ambig.	serotype	topotype	lineage	sublineage
viba_418	PHI/7/96	porcine	87.5	0	O	CATHAY		
viba_480	Yunlin/TAW/97	porcine	87.2	0	O	CATHAY		
viba_584	HKN/6/83	bovine	85.5	2	O	CATHAY		
viba_325	HKN/21/70	porcine	82.1	2	O	CATHAY		
viba_617	IND/53/79	bovine	79.7	0	O	ME-SA		
viba_850	NEP/1/2015	cattle	79.5	1	O	ME-SA	PanAsia-2	KAT-15
viba_50	UGA/17/98		79.4	0	O	EA-4		
viba_30238	MUR/19/2016	cattle	79.4	0	O	ME-SA	Ind-2001	e
viba_221	MAL/1/98		79.2	0	O	EA-2		
viba_650	IRN/8/2005	ovine	78.9	0	O	ME-SA	PanAsia-2	

Virus sample name:	HKN/12/2018
Sender reference:	18-10215
Location of origin:	Sheung Shui Slaughterhouse, Sheung Shui, New Territories
Country of origin:	Hong Kong SAR
Date of collection:	09/07/2018
Host species:	porcine
Serotype:	O
Topotype:	CATHAY
Lineage:	
Sublineage:	
Sequence length:	633
Ambiguities:	0
Material submitted for sequencing:	LFBK1
Harvest date of material:	18/09/2018
Primers:	O-1C244F/EUR-2B52R; O-1C272F/EUR-2B52R; FMD-3161F/FMD-4303R
Received for sequencing:	26/09/2018
Created:	27/09/2018
Last updated:	27/09/2018
VIBASys IDs: sample 37462, genome 37463, sequence viba_37464, sequencing info 37465	

#### Most Closely Related Sequences

sequence	virus name	Host	% Id.	# Ambig.	serotype	topotype	lineage	sublineage
viba_37472	HKN/14/2018	porcine	100.0	0	O	CATHAY		
viba_37476	HKN/15/2018	porcine	99.8	0	O	CATHAY		
viba_36384	HKN/4/2018	porcine	99.4	0	O	CATHAY		
viba_37484	HKN/17/2018	porcine	99.2	0	O	CATHAY		
viba_37480	HKN/16/2018	porcine	99.1	0	O	CATHAY		
viba_37460	HKN/11/2018	porcine	99.1	0	O	CATHAY		
viba_35658	HKN/11/2017	porcine	98.6	0	O	CATHAY		
viba_37468	HKN/13/2018	porcine	98.4	0	O	CATHAY		
viba_35662	HKN/12/2017	porcine	98.4	0	O	CATHAY		
viba_35918	HKN/5/2017	porcine	98.3	0	O	CATHAY		

#### Most Closely Related Prototype Sequences

see [http://www.wrlfmd.org/fmd\\_genotyping/prototypes.htm](http://www.wrlfmd.org/fmd_genotyping/prototypes.htm)

sequence	virus name	Host	% Id.	# Ambig.	serotype	topotype	lineage	sublineage
viba_418	PHI/7/96	porcine	87.2	0	O	CATHAY		
viba_480	Yunlin/TAW/97	porcine	86.9	0	O	CATHAY		
viba_584	HKN/6/83	bovine	85.5	2	O	CATHAY		
viba_325	HKN/21/70	porcine	82.5	2	O	CATHAY		
viba_617	IND/53/79	bovine	79.4	0	O	ME-SA		
viba_50	UGA/17/98		79.2	0	O	EA-4		
viba_221	MAL/1/98		78.9	0	O	EA-2		
viba_850	NEP/1/2015	cattle	78.8	1	O	ME-SA	PanAsia-2	KAT-15
viba_85	UGA/3/2002		78.8	0	O	EA-2		
viba_518	ISA/1/62		78.6	0	O	ISA-1		

Virus sample name:	HKN/13/2018
Sender reference:	18-10579
Location of origin:	Sheung Shui Slaughterhouse, Sheung Shui, New Territories
Country of origin:	Hong Kong SAR
Date of collection:	16/07/2018
Host species:	porcine
Serotype:	O
Topotype:	CATHAY
Lineage:	
Sublineage:	
Sequence length:	633
Ambiguities:	0
Material submitted for sequencing:	RS1 19/09/2018 & LFBK1
Harvest date of material:	18/09/2018
Primers:	O-1C244F/EUR-2B52R; O-1C272F/EUR-2B52R; FMD-3161F/FMD-4303R
Received for sequencing:	26/09/2018
Created:	27/09/2018
Last updated:	27/09/2018
VIBASys IDs: sample 37466, genome 37467, sequence viba_37468, sequencing info 37469	

#### Most Closely Related Sequences

sequence	virus name	Host	% Id.	# Ambig.	serotype	topotype	lineage	sublineage
viba_37480	HKN/16/2018	porcine	99.4	0	O	CATHAY		
viba_37484	HKN/17/2018	porcine	98.9	0	O	CATHAY		
viba_37476	HKN/15/2018	porcine	98.6	0	O	CATHAY		
viba_36384	HKN/4/2018	porcine	98.4	0	O	CATHAY		
viba_37464	HKN/12/2018	porcine	98.4	0	O	CATHAY		
viba_37472	HKN/14/2018	porcine	98.4	0	O	CATHAY		
viba_37460	HKN/11/2018	porcine	98.1	0	O	CATHAY		
viba_35658	HKN/11/2017	porcine	97.6	0	O	CATHAY		
viba_35662	HKN/12/2017	porcine	97.5	0	O	CATHAY		
viba_30088	HKN/7/2016	porcine	97.5	0	O	CATHAY		

#### Most Closely Related Prototype Sequences

see [http://www.wrlfmd.org/fmd\\_genotyping/prototypes.htm](http://www.wrlfmd.org/fmd_genotyping/prototypes.htm)

sequence	virus name	Host	% Id.	# Ambig.	serotype	topotype	lineage	sublineage
viba_418	PHI/7/96	porcine	87.9	0	O	CATHAY		
viba_480	Yunlin/TAW/97	porcine	86.9	0	O	CATHAY		
viba_584	HKN/6/83	bovine	84.7	2	O	CATHAY		
viba_325	HKN/21/70	porcine	82.1	2	O	CATHAY		
viba_617	IND/53/79	bovine	80.2	0	O	ME-SA		
viba_50	UGA/17/98		80.2	0	O	EA-4		
viba_850	NEP/1/2015	cattle	79.7	1	O	ME-SA	PanAsia-2	KAT-15
viba_359	Manisa/TUR/69		79.5	0	O	ME-SA		
viba_85	UGA/3/2002		79.5	0	O	EA-2		
viba_30238	MUR/19/2016	cattle	79.5	0	O	ME-SA	Ind-2001	e

Virus sample name:	HKN/14/2018
Sender reference:	18-10580
Location of origin:	Sheung Shui Slaughterhouse, Sheung Shui, New Territories
Country of origin:	Hong Kong SAR
Date of collection:	16/07/2018
Host species:	porcine
Serotype:	O
Topotype:	CATHAY
Lineage:	
Sublineage:	
Sequence length:	633
Ambiguities:	0
Material submitted for sequencing:	LFBK1
Harvest date of material:	18/09/2018
Primers:	O-1C244F/EUR-2B52R; O-1C272F/EUR-2B52R; FMD-3161F/FMD-4303R
Received for sequencing:	26/09/2018
Created:	27/09/2018
Last updated:	27/09/2018
VIBASys IDs: sample 37470, genome 37471, sequence viba_37472, sequencing info 37473	

#### Most Closely Related Sequences

sequence	virus name	Host	% Id.	# Ambig.	serotype	topotype	lineage	sublineage
viba_37464	HKN/12/2018	porcine	100.0	0	O	CATHAY		
viba_37476	HKN/15/2018	porcine	99.8	0	O	CATHAY		
viba_36384	HKN/4/2018	porcine	99.4	0	O	CATHAY		
viba_37484	HKN/17/2018	porcine	99.2	0	O	CATHAY		
viba_37480	HKN/16/2018	porcine	99.1	0	O	CATHAY		
viba_37460	HKN/11/2018	porcine	99.1	0	O	CATHAY		
viba_35658	HKN/11/2017	porcine	98.6	0	O	CATHAY		
viba_37468	HKN/13/2018	porcine	98.4	0	O	CATHAY		
viba_35662	HKN/12/2017	porcine	98.4	0	O	CATHAY		
viba_35918	HKN/5/2017	porcine	98.3	0	O	CATHAY		

#### Most Closely Related Prototype Sequences

see [http://www.wrlfmd.org/fmd\\_genotyping/prototypes.htm](http://www.wrlfmd.org/fmd_genotyping/prototypes.htm)

sequence	virus name	Host	% Id.	# Ambig.	serotype	topotype	lineage	sublineage
viba_418	PHI/7/96	porcine	87.2	0	O	CATHAY		
viba_480	Yunlin/TAW/97	porcine	86.9	0	O	CATHAY		
viba_584	HKN/6/83	bovine	85.5	2	O	CATHAY		
viba_325	HKN/21/70	porcine	82.5	2	O	CATHAY		
viba_617	IND/53/79	bovine	79.4	0	O	ME-SA		
viba_50	UGA/17/98		79.2	0	O	EA-4		
viba_221	MAL/1/98		78.9	0	O	EA-2		
viba_850	NEP/1/2015	cattle	78.8	1	O	ME-SA	PanAsia-2	KAT-15
viba_85	UGA/3/2002		78.8	0	O	EA-2		
viba_518	ISA/1/62		78.6	0	O	ISA-1		

Virus sample name:	HKN/15/2018
Sender reference:	18-10581
Location of origin:	Sheung Shui Slaughterhouse, Sheung Shui, New Territories
Country of origin:	Hong Kong SAR
Date of collection:	16/07/2018
Host species:	porcine
Serotype:	O
Topotype:	CATHAY
Lineage:	
Sublineage:	
Sequence length:	633
Ambiguities:	0
Material submitted for sequencing:	LFBK1
Harvest date of material:	18/09/2018
Primers:	O-1C244F/EUR-2B52R; O-1C272F/EUR-2B52R; FMD-3161F/FMD-4303R
Received for sequencing:	26/09/2018
Created:	27/09/2018
Last updated:	27/09/2018
VIBASys IDs: sample 37474, genome 37475, sequence viba_37476, sequencing info 37477	

#### Most Closely Related Sequences

sequence	virus name	Host	% Id.	# Ambig.	serotype	topotype	lineage	sublineage
viba_37464	HKN/12/2018	porcine	99.8	0	O	CATHAY		
viba_37472	HKN/14/2018	porcine	99.8	0	O	CATHAY		
viba_36384	HKN/4/2018	porcine	99.5	0	O	CATHAY		
viba_37484	HKN/17/2018	porcine	99.4	0	O	CATHAY		
viba_37480	HKN/16/2018	porcine	99.2	0	O	CATHAY		
viba_37460	HKN/11/2018	porcine	99.2	0	O	CATHAY		
viba_35658	HKN/11/2017	porcine	98.7	0	O	CATHAY		
viba_37468	HKN/13/2018	porcine	98.6	0	O	CATHAY		
viba_35662	HKN/12/2017	porcine	98.6	0	O	CATHAY		
viba_35918	HKN/5/2017	porcine	98.4	0	O	CATHAY		

#### Most Closely Related Prototype Sequences

see [http://www.wrlfmd.org/fmd\\_genotyping/prototypes.htm](http://www.wrlfmd.org/fmd_genotyping/prototypes.htm)

sequence	virus name	Host	% Id.	# Ambig.	serotype	topotype	lineage	sublineage
viba_418	PHI/7/96	porcine	87.4	0	O	CATHAY		
viba_480	Yunlin/TAW/97	porcine	87.0	0	O	CATHAY		
viba_584	HKN/6/83	bovine	85.5	2	O	CATHAY		
viba_325	HKN/21/70	porcine	82.4	2	O	CATHAY		
viba_617	IND/53/79	bovine	79.5	0	O	ME-SA		
viba_50	UGA/17/98		79.4	0	O	EA-4		
viba_221	MAL/1/98		79.0	0	O	EA-2		
viba_85	UGA/3/2002		79.0	0	O	EA-2		
viba_850	NEP/1/2015	cattle	78.9	1	O	ME-SA	PanAsia-2	KAT-15
viba_518	ISA/1/62		78.8	0	O	ISA-1		

Virus sample name:	HKN/16/2018
Sender reference:	18-10640
Location of origin:	Sheung Shui Slaughterhouse, Sheung Shui, New Territories
Country of origin:	Hong Kong SAR
Date of collection:	17/07/2018
Host species:	porcine
Serotype:	O
Topotype:	CATHAY
Lineage:	
Sublineage:	
Sequence length:	633
Ambiguities:	0
Material submitted for sequencing:	LFBK1
Harvest date of material:	18/09/2018
Primers:	O-1C244F/EUR-2B52R; O-1C272F/EUR-2B52R; FMD-3161F/FMD-4303R
Received for sequencing:	26/09/2018
Created:	27/09/2018
Last updated:	27/09/2018
VIBASys IDs: sample 37478, genome 37479, sequence viba_37480, sequencing info 37481	

#### Most Closely Related Sequences

sequence	virus name	Host	% Id.	# Ambig.	serotype	topotype	lineage	sublineage
viba_37484	HKN/17/2018	porcine	99.5	0	O	CATHAY		
viba_37468	HKN/13/2018	porcine	99.4	0	O	CATHAY		
viba_37476	HKN/15/2018	porcine	99.2	0	O	CATHAY		
viba_36384	HKN/4/2018	porcine	99.1	0	O	CATHAY		
viba_37464	HKN/12/2018	porcine	99.1	0	O	CATHAY		
viba_37472	HKN/14/2018	porcine	99.1	0	O	CATHAY		
viba_37460	HKN/11/2018	porcine	98.7	0	O	CATHAY		
viba_35658	HKN/11/2017	porcine	98.3	0	O	CATHAY		
viba_35662	HKN/12/2017	porcine	98.1	0	O	CATHAY		
viba_35918	HKN/5/2017	porcine	97.9	0	O	CATHAY		

#### Most Closely Related Prototype Sequences

see [http://www.wrlfmd.org/fmd\\_genotyping/prototypes.htm](http://www.wrlfmd.org/fmd_genotyping/prototypes.htm)

sequence	virus name	Host	% Id.	# Ambig.	serotype	topotype	lineage	sublineage
viba_418	PHI/7/96	porcine	87.5	0	O	CATHAY		
viba_480	Yunlin/TAW/97	porcine	86.9	0	O	CATHAY		
viba_584	HKN/6/83	bovine	85.0	2	O	CATHAY		
viba_325	HKN/21/70	porcine	82.1	2	O	CATHAY		
viba_617	IND/53/79	bovine	79.8	0	O	ME-SA		
viba_50	UGA/17/98		79.4	0	O	EA-4		
viba_518	ISA/1/62		79.3	0	O	ISA-1		
viba_850	NEP/1/2015	cattle	79.3	1	O	ME-SA	PanAsia-2	KAT-15
viba_359	Manisa/TUR/69		79.2	0	O	ME-SA		
viba_221	MAL/1/98		79.2	0	O	EA-2		

Virus sample name:	HKN/17/2018
Sender reference:	18-10641
Location of origin:	Sheung Shui Slaughterhouse, Sheung Shui, New Territories
Country of origin:	Hong Kong SAR
Date of collection:	17/07/2018
Host species:	porcine
Serotype:	O
Topotype:	CATHAY
Lineage:	
Sublineage:	
Sequence length:	633
Ambiguities:	0
Material submitted for sequencing:	LFBK1
Harvest date of material:	18/09/2018
Primers:	O-1C244F/EUR-2B52R; O-1C272F/EUR-2B52R; FMD-3161F/FMD-4303R
Received for sequencing:	26/09/2018
Created:	27/09/2018
Last updated:	27/09/2018
VIBASys IDs: sample 37482, genome 37483, sequence viba_37484, sequencing info 37485	

#### Most Closely Related Sequences

sequence	virus name	Host	% Id.	# Ambig.	serotype	topotype	lineage	sublineage
viba_37480	HKN/16/2018	porcine	99.5	0	O	CATHAY		
viba_37476	HKN/15/2018	porcine	99.4	0	O	CATHAY		
viba_36384	HKN/4/2018	porcine	99.2	0	O	CATHAY		
viba_37464	HKN/12/2018	porcine	99.2	0	O	CATHAY		
viba_37472	HKN/14/2018	porcine	99.2	0	O	CATHAY		
viba_37468	HKN/13/2018	porcine	98.9	0	O	CATHAY		
viba_37460	HKN/11/2018	porcine	98.9	0	O	CATHAY		
viba_35658	HKN/11/2017	porcine	98.7	0	O	CATHAY		
viba_35918	HKN/5/2017	porcine	98.4	0	O	CATHAY		
viba_34909	HKN/1/2017	porcine	98.4	0	O	CATHAY		

#### Most Closely Related Prototype Sequences

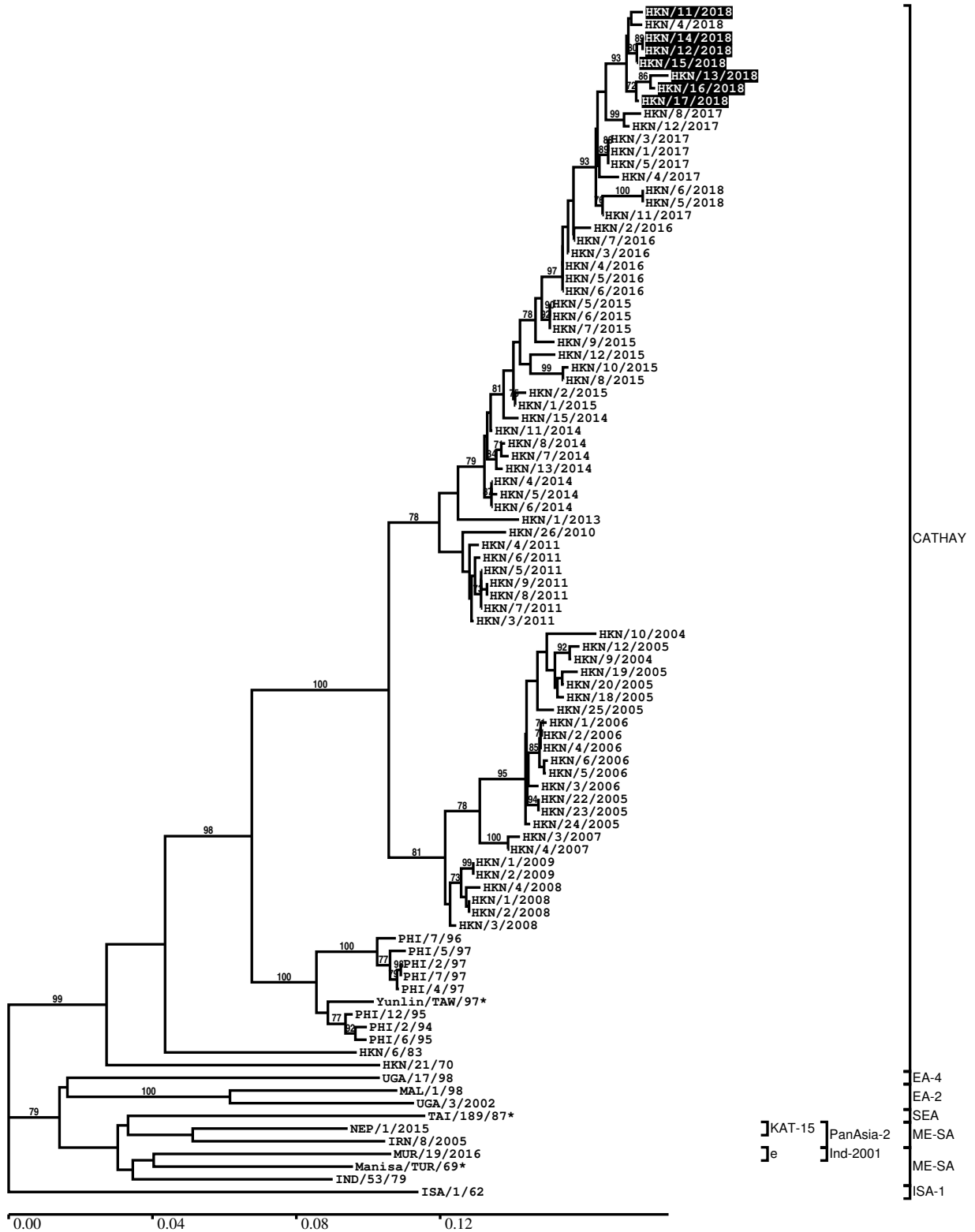
see [http://www.wrlfmd.org/fmd\\_genotyping/prototypes.htm](http://www.wrlfmd.org/fmd_genotyping/prototypes.htm)

sequence	virus name	Host	% Id.	# Ambig.	serotype	topotype	lineage	sublineage
viba_418	PHI/7/96	porcine	87.7	0	O	CATHAY		
viba_480	Yunlin/TAW/97	porcine	87.3	0	O	CATHAY		
viba_584	HKN/6/83	bovine	85.2	2	O	CATHAY		
viba_325	HKN/21/70	porcine	82.1	2	O	CATHAY		
viba_617	IND/53/79	bovine	80.2	0	O	ME-SA		
viba_850	NEP/1/2015	cattle	79.7	1	O	ME-SA	PanAsia-2	KAT-15
viba_50	UGA/17/98		79.5	0	O	EA-4		
viba_30238	MUR/19/2016	cattle	79.5	0	O	ME-SA	Ind-2001	e
viba_518	ISA/1/62		79.4	0	O	ISA-1		
viba_221	MAL/1/98		79.3	0	O	EA-2		



Report on FMDV O in Hong Kong SAR in 2018

Batch: WRLFMD/2018/00025



\*, not a WRLFMD Reference Number

## Analysis Parameters

VP1 subsequence extractor: vp1\_O  
 Query sequence set: WRLFMD/2018/00025-Hong Kong SAR-O (7 sequences)  
 Sequence database set: allseqs\_O (3883 sequences)  
 Prototype sequence set: !prototypes\_O (49 sequences)  
 Number of related sequences reported: 10  
 Minimal VP1 subsequence match length: 600  
 Sequence alignment method: muscle (default parameters)  
 Sequence alignment length: 636  
 Phylogeny reconstruction method: fdnadist, fneighbor  
 Number of bootstrap samples: 1000  
 Random seed for bootstrapping: 1  
 Displaying bootstrap values above: 70.0%  
 Number of sequences in tree capped at: 100  
 Number of prototype sequences in tree: 13  
 VIBASys version: reflabs-1.1.2

## Sequences in the Phylogenetic Tree

All sequences in the tree are in taxonomic group FMDV/O

label	accession	host(s)	lab	country	taxonomic information
HKN/11/2018	n/a	porcine	WRLFMD	Hong Kong SAR	CATHAY
HKN/4/2018	n/a	porcine	WRLFMD	Hong Kong SAR	CATHAY
HKN/14/2018	n/a	porcine	WRLFMD	Hong Kong SAR	CATHAY
HKN/12/2018	n/a	porcine	WRLFMD	Hong Kong SAR	CATHAY
HKN/15/2018	n/a	porcine	WRLFMD	Hong Kong SAR	CATHAY
HKN/13/2018	n/a	porcine	WRLFMD	Hong Kong SAR	CATHAY
HKN/16/2018	n/a	porcine	WRLFMD	Hong Kong SAR	CATHAY
HKN/17/2018	n/a	porcine	WRLFMD	Hong Kong SAR	CATHAY
HKN/8/2017	n/a	porcine	WRLFMD	Hong Kong SAR	CATHAY
HKN/12/2017	n/a	porcine	WRLFMD	Hong Kong SAR	CATHAY
HKN/3/2017	n/a	porcine	WRLFMD	Hong Kong SAR	CATHAY
HKN/1/2017	n/a	porcine	WRLFMD	Hong Kong SAR	CATHAY
HKN/5/2017	n/a	porcine	WRLFMD	Hong Kong SAR	CATHAY
HKN/4/2017	n/a	porcine	WRLFMD	Hong Kong SAR	CATHAY
HKN/6/2018	n/a	porcine	WRLFMD	Hong Kong SAR	CATHAY
HKN/5/2018	n/a	porcine	WRLFMD	Hong Kong SAR	CATHAY
HKN/11/2017	n/a	porcine	WRLFMD	Hong Kong SAR	CATHAY
HKN/2/2016	n/a	porcine	WRLFMD	Hong Kong SAR	CATHAY
HKN/7/2016	n/a	porcine	WRLFMD	Hong Kong SAR	CATHAY
HKN/3/2016	n/a	porcine	WRLFMD	Hong Kong SAR	CATHAY
HKN/4/2016	n/a	porcine	WRLFMD	Hong Kong SAR	CATHAY
HKN/5/2016	n/a	porcine	WRLFMD	Hong Kong SAR	CATHAY
HKN/6/2016	n/a	porcine	WRLFMD	Hong Kong SAR	CATHAY
HKN/5/2015	n/a	porcine	WRLFMD	Hong Kong SAR	CATHAY
HKN/6/2015	n/a	porcine	WRLFMD	Hong Kong SAR	CATHAY
HKN/7/2015	n/a	porcine	WRLFMD	Hong Kong SAR	CATHAY
HKN/9/2015	n/a	porcine	WRLFMD	Hong Kong SAR	CATHAY
HKN/12/2015	n/a	porcine	WRLFMD	Hong Kong SAR	CATHAY
HKN/10/2015	n/a	porcine	WRLFMD	Hong Kong SAR	CATHAY
HKN/8/2015	n/a	porcine	WRLFMD	Hong Kong SAR	CATHAY
HKN/2/2015	n/a	porcine	WRLFMD	Hong Kong SAR	CATHAY
HKN/1/2015	n/a	porcine	WRLFMD	Hong Kong SAR	CATHAY
HKN/15/2014	n/a	porcine	WRLFMD	Hong Kong SAR	CATHAY
HKN/11/2014	n/a	porcine	WRLFMD	Hong Kong SAR	CATHAY
HKN/8/2014	n/a	porcine	WRLFMD	Hong Kong SAR	CATHAY
HKN/7/2014	n/a	porcine	WRLFMD	Hong Kong SAR	CATHAY

*continued on next page*

label	accession	host(s)	lab	country	taxonomic information
HKN/13/2014	n/a	porcine	WRLFMD	Hong Kong SAR	CATHAY
HKN/4/2014	n/a	porcine	WRLFMD	Hong Kong SAR	CATHAY
HKN/5/2014	n/a	porcine	WRLFMD	Hong Kong SAR	CATHAY
HKN/6/2014	n/a	porcine	WRLFMD	Hong Kong SAR	CATHAY
HKN/1/2013	KM243172	porcine	WRLFMD	Hong Kong SAR	CATHAY
HKN/26/2010	KM243164	porcine	WRLFMD	Hong Kong SAR	CATHAY
HKN/4/2011	KM243166	porcine	WRLFMD	Hong Kong SAR	CATHAY
HKN/6/2011	KM243168	porcine	WRLFMD	Hong Kong SAR	CATHAY
HKN/5/2011	KM243167	porcine	WRLFMD	Hong Kong SAR	CATHAY
HKN/9/2011	KM243171	porcine	WRLFMD	Hong Kong SAR	CATHAY
HKN/8/2011	KM243170	porcine	WRLFMD	Hong Kong SAR	CATHAY
HKN/7/2011	KM243169	porcine	WRLFMD	Hong Kong SAR	CATHAY
HKN/3/2011	KM243165	porcine	WRLFMD	Hong Kong SAR	CATHAY
HKN/10/2004	DQ164887	porcine	WRLFMD	Hong Kong SAR	CATHAY
HKN/12/2005	KM243132	porcine	WRLFMD	Hong Kong SAR	CATHAY
HKN/9/2004	DQ164886	porcine	WRLFMD	Hong Kong SAR	CATHAY
HKN/19/2005	KM243137	porcine	WRLFMD	Hong Kong SAR	CATHAY
HKN/20/2005	KM243138	porcine	WRLFMD	Hong Kong SAR	CATHAY
HKN/18/2005	KM243136	porcine	WRLFMD	Hong Kong SAR	CATHAY
HKN/25/2005	KM243143	porcine	WRLFMD	Hong Kong SAR	CATHAY
HKN/1/2006	KM243144	porcine	WRLFMD	Hong Kong SAR	CATHAY
HKN/2/2006	KM243145	porcine	WRLFMD	Hong Kong SAR	CATHAY
HKN/4/2006	KM243147	porcine	WRLFMD	Hong Kong SAR	CATHAY
HKN/6/2006	KM243149	porcine	WRLFMD	Hong Kong SAR	CATHAY
HKN/5/2006	KM243148	porcine	WRLFMD	Hong Kong SAR	CATHAY
HKN/3/2006	KM243146	porcine	WRLFMD	Hong Kong SAR	CATHAY
HKN/22/2005	KM243140	porcine	WRLFMD	Hong Kong SAR	CATHAY
HKN/23/2005	KM243141	porcine	WRLFMD	Hong Kong SAR	CATHAY
HKN/24/2005	KM243142	porcine	WRLFMD	Hong Kong SAR	CATHAY
HKN/3/2007	KM243152	porcine	WRLFMD	Hong Kong SAR	CATHAY
HKN/4/2007	KM243153	porcine	WRLFMD	Hong Kong SAR	CATHAY
HKN/1/2009	KM243159	porcine	WRLFMD	Hong Kong SAR	CATHAY
HKN/2/2009	KM243160	porcine	WRLFMD	Hong Kong SAR	CATHAY
HKN/4/2008	KM243158	porcine	WRLFMD	Hong Kong SAR	CATHAY
HKN/1/2008	KM243155	porcine	WRLFMD	Hong Kong SAR	CATHAY
HKN/2/2008	KM243156	porcine	WRLFMD	Hong Kong SAR	CATHAY
HKN/3/2008	KM243157	porcine	WRLFMD	Hong Kong SAR	CATHAY
PHI/7/96	AJ294926	porcine	WRLFMD	Philippines	CATHAY
PHI/5/97	KM243062	porcine	WRLFMD	Philippines	CATHAY
PHI/2/97	KM243059	porcine	WRLFMD	Philippines	CATHAY
PHI/7/97	KM243064	porcine	WRLFMD	Philippines	CATHAY
PHI/4/97	KM243061	porcine	WRLFMD	Philippines	CATHAY
Yunlin/TAW/97*	AF308157	porcine	PIADC	Taiwan	CATHAY
PHI/12/95	KM243048	porcine	WRLFMD	Philippines	CATHAY
PHI/2/94	KM243034	porcine	WRLFMD	Philippines	CATHAY
PHI/6/95	KM243044	porcine	WRLFMD	Philippines	CATHAY
HKN/6/83	AJ294919	bovine	WRLFMD	Hong Kong SAR	CATHAY
HKN/21/70	AJ294911	porcine	WRLFMD	Hong Kong SAR	CATHAY
UGA/17/98	HM211075	n/a	WRLFMD	Uganda	EA-4
MAL/1/98	DQ165074	n/a	WRLFMD	Malawi	EA-2
UGA/3/2002	DQ165077	n/a	WRLFMD	Uganda	EA-2
TAI/189/87*	KY091288	bovine	TRRL	Thailand	SEA
NEP/1/2015	n/a	cattle	WRLFMD	Nepal	ME-SA/PanAsia-2/KAT-15
IRN/8/2005	KY091281	ovine	WRLFMD	Iran	ME-SA/PanAsia-2
MUR/19/2016	MG972510	cattle	WRLFMD	Mauritius	ME-SA/Ind-2001/e
Manisa/TUR/69*	AY593823	n/a	PIADC	Turkey	ME-SA
IND/53/79	AF292107	bovine	PD-FMD	India	ME-SA
ISA/1/62	AJ303500	n/a	WRLFMD	Indonesia	ISA-1

\*, not a WRLFMD Reference Number

n/a, not available