

FAO World Reference Laboratory for Foot-and-Mouth Disease (WRLFMD)

Genotyping Report

FMDV serotype: O
Country: Thailand
Year: 2017, 2018
Batch: WRLFMD/2018/00030
No. of sequences: 8
Report date: 9th December 2018
Report generated by: Nick Knowles
Report checked by: Kasia Bankowska



Copyright © 2018 The Pirbright Institute, Ash Road, Pirbright, Woking GU24 0NF, United Kingdom.

www: <http://www.wrlfmd.org/>

email: reporting@pirbright.ac.uk

The contents of this report should not be reproduced without permission.

Virus sample name:	TAI/12/2017
Sender reference:	66-2/17
Location of origin:	Songkhla
Country of origin:	Thailand
Date of collection:	10/11/2017
Host species:	cattle
Serotype:	O
Topotype:	ME-SA
Lineage:	PanAsia
Sublineage:	
Sequence length:	633
Ambiguities:	0
Material submitted for sequencing:	RSB1 BTy1
Harvest date of material:	29/11/2018
Primers:	O-1C244F/EUR-2B52R; O-1C272F/EUR-2B52R; FMD-3161F/FMD-4303R
Received for sequencing:	06/12/2018
Created:	08/12/2018
Last updated:	08/12/2018
VIBASys IDs: sample 37666, genome 37667, sequence viba_37668, sequencing info 37669	

Most Closely Related Sequences

sequence	virus name	Host	% Id.	# Ambig.	serotype	topotype	lineage	sublineage
viba_35454	BaTri/VIT/17-19372	cattle	99.7	0	O	ME-SA	PanAsia	
viba_37680	TAI/16/2017	cattle	99.7	0	O	ME-SA	PanAsia	
viba_36461	VIT/18/2017	bovine	99.7	0	O	ME-SA	PanAsia	
viba_36481	VIT/29/2017	bovine	99.7	0	O	ME-SA	PanAsia	
viba_37688	TAI/3/2018	cattle	99.5	0	O	ME-SA	PanAsia	
viba_37696	TAI/5/2018	cattle	99.5	0	O	ME-SA	PanAsia	
viba_36493	VIT/32/2017	bovine	99.4	0	O	ME-SA	PanAsia	
viba_36497	VIT/1/2018	bovine	99.4	0	O	ME-SA	PanAsia	
viba_36489	VIT/31/2017	bovine	99.2	0	O	ME-SA	PanAsia	
viba_36485	VIT/30/2017	bovine	99.1	0	O	ME-SA	PanAsia	

Most Closely Related Prototype Sequences

see http://www.wrlfmd.org/fmd_genotyping/prototypes.htm

sequence	virus name	Host	% Id.	# Ambig.	serotype	topotype	lineage	sublineage
viba_285	UKG/35/2001	porcine	91.6	0	O	ME-SA	PanAsia	
viba_705	KUW/3/97	bovine	91.0	0	O	ME-SA	Ind-2001	a
viba_293	BHU/3/2009	cattle	90.8	0	O	ME-SA	Ind-2001	d
viba_541	OMN/7/2001	bovine	90.4	0	O	ME-SA	Ind-2001	b
viba_30238	MUR/19/2016	cattle	89.9	0	O	ME-SA	Ind-2001	e
viba_505	TUR/264/2009		89.9	0	O	ME-SA	PanAsia-2	SAN-09
viba_650	IRN/8/2005	ovine	89.7	0	O	ME-SA	PanAsia-2	
viba_397	UAE/4/2008	gazelle	89.4	0	O	ME-SA	Ind-2001	c
viba_766	IRN/31/2009	cattle	89.4	0	O	ME-SA	PanAsia-2	FAR-09
viba_491	TUR/257/2008		89.3	0	O	ME-SA	PanAsia-2	TER-08

Virus sample name:	TAI/13/2017
Sender reference:	95/17
Location of origin:	Nakhon Si Thammarat
Country of origin:	Thailand
Date of collection:	17/11/2017
Host species:	cattle
Serotype:	O
Topotype:	ME-SA
Lineage:	Ind-2001
Sublineage:	e
Sequence length:	633
Ambiguities:	0
Material submitted for sequencing:	R2B3 BTy1
Harvest date of material:	29/11/2018
Primers:	O-1C244F/EUR-2B52R; O-1C272F/EUR-2B52R; FMD-3161F/FMD-4303R
Received for sequencing:	06/12/2018
Created:	08/12/2018
Last updated:	08/12/2018
VIBASys IDs: sample 37670, genome 37671, sequence viba_37672, sequencing info 37673	

Most Closely Related Sequences

sequence	virus name	Host	% Id.	# Ambig.	serotype	topotype	lineage	sublineage
viba_36453	VIT/9/2017	bovine	99.7	0	O	ME-SA	Ind-2001	e
viba_33785	MYA/1/2017	cattle	98.6	0	O	ME-SA	Ind-2001	e
viba_31595	Zabaikalskiy/3/RUS/2016	cattle	98.6	0	O	ME-SA	Ind-2001	e
viba_31082	BAN/GKa-236(pig)/2015	porcine	98.4	0	O	ME-SA	Ind-2001	e
viba_30859	Zabaikalskiy/2/RUS/2016	cattle	98.4	0	O	ME-SA	Ind-2001	e
viba_32441	MYA/9/2017	cattle	98.4	0	O	ME-SA	Ind-2001	e
viba_31573	170206/SKR/2017	cattle	98.4	0	O	ME-SA	Ind-2001	e
viba_30855	Zabaikalskiy/1/RUS/2016	cattle	98.4	0	O	ME-SA	Ind-2001	e
viba_31599	Zabaikalskiy/4/RUS/2016	cattle	98.3	0	O	ME-SA	Ind-2001	e
viba_32128	XJPS/CHA/2017		98.3	0	O	ME-SA	Ind-2001	e

Most Closely Related Prototype Sequences

see http://www.wrlfmd.org/fmd_genotyping/prototypes.htm

sequence	virus name	Host	% Id.	# Ambig.	serotype	topotype	lineage	sublineage
viba_30238	MUR/19/2016	cattle	97.6	0	O	ME-SA	Ind-2001	e
viba_293	BHU/3/2009	cattle	93.0	0	O	ME-SA	Ind-2001	d
viba_541	OMN/7/2001	bovine	92.1	0	O	ME-SA	Ind-2001	b
viba_705	KUW/3/97	bovine	91.5	0	O	ME-SA	Ind-2001	a
viba_397	UAE/4/2008	gazelle	89.6	0	O	ME-SA	Ind-2001	c
viba_285	UKG/35/2001	porcine	88.7	0	O	ME-SA	PanAsia	
viba_766	IRN/31/2009	cattle	87.7	0	O	ME-SA	PanAsia-2	FAR-09
viba_359	Manisa/TUR/69		87.7	0	O	ME-SA		
viba_650	IRN/8/2005	ovine	87.5	0	O	ME-SA	PanAsia-2	
viba_491	TUR/257/2008		87.4	0	O	ME-SA	PanAsia-2	TER-08

Virus sample name:	TAI/15/2017
Sender reference:	123/17
Location of origin:	Phetchabun
Country of origin:	Thailand
Date of collection:	23/11/2017
Host species:	cattle
Serotype:	O
Topotype:	ME-SA
Lineage:	Ind-2001
Sublineage:	e
Sequence length:	633
Ambiguities:	0
Material submitted for sequencing:	R3 BTy1
Harvest date of material:	29/11/2018
Primers:	O-1C244F/EUR-2B52R; O-1C272F/EUR-2B52R; FMD-3161F/FMD-4303R
Received for sequencing:	06/12/2018
Created:	08/12/2018
Last updated:	08/12/2018
VIBASys IDs: sample 37674, genome 37675, sequence viba_37676, sequencing info 37677	

Most Closely Related Sequences

sequence	virus name	Host	% Id.	# Ambig.	serotype	topotype	lineage	sublineage
viba_31573	170206/SKR/2017	cattle	98.7	0	O	ME-SA	Ind-2001	e
viba_31595	Zabaikalskiy/3/RUS/2016	cattle	98.6	0	O	ME-SA	Ind-2001	e
viba_31565	170205/SKR/2017	cattle	98.4	0	O	ME-SA	Ind-2001	e
viba_31082	BAN/GKa-236(pig)/2015	porcine	98.4	0	O	ME-SA	Ind-2001	e
viba_30859	Zabaikalskiy/2/RUS/2016	cattle	98.4	0	O	ME-SA	Ind-2001	e
viba_31951	SKR/2/2017	cattle	98.4	0	O	ME-SA	Ind-2001	e
viba_31947	SKR/1/2017	cattle	98.4	0	O	ME-SA	Ind-2001	e
viba_30855	Zabaikalskiy/1/RUS/2016	cattle	98.4	0	O	ME-SA	Ind-2001	e
viba_31599	Zabaikalskiy/4/RUS/2016	cattle	98.3	0	O	ME-SA	Ind-2001	e
viba_32128	XJPS/CHA/2017		98.3	0	O	ME-SA	Ind-2001	e

Most Closely Related Prototype Sequences

see http://www.wrlfmd.org/fmd_genotyping/prototypes.htm

sequence	virus name	Host	% Id.	# Ambig.	serotype	topotype	lineage	sublineage
viba_30238	MUR/19/2016	cattle	97.6	0	O	ME-SA	Ind-2001	e
viba_293	BHU/3/2009	cattle	93.4	0	O	ME-SA	Ind-2001	d
viba_541	OMN/7/2001	bovine	92.0	0	O	ME-SA	Ind-2001	b
viba_705	KUW/3/97	bovine	91.3	0	O	ME-SA	Ind-2001	a
viba_397	UAE/4/2008	gazelle	89.6	0	O	ME-SA	Ind-2001	c
viba_766	IRN/31/2009	cattle	88.8	0	O	ME-SA	PanAsia-2	FAR-09
viba_285	UKG/35/2001	porcine	88.7	0	O	ME-SA	PanAsia	
viba_650	IRN/8/2005	ovine	88.3	0	O	ME-SA	PanAsia-2	
viba_719	IRN/88/2009		88.0	0	O	ME-SA	PanAsia-2	ANT-10
viba_491	TUR/257/2008		87.9	0	O	ME-SA	PanAsia-2	TER-08

Virus sample name:	TAI/16/2017
Sender reference:	136/17
Location of origin:	Surin
Country of origin:	Thailand
Date of collection:	15/12/2017
Host species:	cattle
Serotype:	O
Topotype:	ME-SA
Lineage:	PanAsia
Sublineage:	
Sequence length:	633
Ambiguities:	0
Material submitted for sequencing:	R3B1 BTy1
Harvest date of material:	29/11/2018
Primers:	O-1C244F/EUR-2B52R; O-1C272F/EUR-2B52R; FMD-3161F/FMD-4303R
Received for sequencing:	06/12/2018
Created:	08/12/2018
Last updated:	08/12/2018
VIBASys IDs: sample 37678, genome 37679, sequence viba_37680, sequencing info 37681	

Most Closely Related Sequences

sequence	virus name	Host	% Id.	# Ambig.	serotype	topotype	lineage	sublineage
viba_37668	TAI/12/2017	cattle	99.7	0	O	ME-SA	PanAsia	
viba_35454	BaTri/VIT/17-19372	cattle	99.4	0	O	ME-SA	PanAsia	
viba_36461	VIT/18/2017	bovine	99.4	0	O	ME-SA	PanAsia	
viba_36481	VIT/29/2017	bovine	99.4	0	O	ME-SA	PanAsia	
viba_37688	TAI/3/2018	cattle	99.2	0	O	ME-SA	PanAsia	
viba_37696	TAI/5/2018	cattle	99.2	0	O	ME-SA	PanAsia	
viba_36493	VIT/32/2017	bovine	99.1	0	O	ME-SA	PanAsia	
viba_36497	VIT/1/2018	bovine	99.1	0	O	ME-SA	PanAsia	
viba_36489	VIT/31/2017	bovine	98.9	0	O	ME-SA	PanAsia	
viba_36485	VIT/30/2017	bovine	98.7	0	O	ME-SA	PanAsia	

Most Closely Related Prototype Sequences

see http://www.wrlfmd.org/fmd_genotyping/prototypes.htm

sequence	virus name	Host	% Id.	# Ambig.	serotype	topotype	lineage	sublineage
viba_285	UKG/35/2001	porcine	91.3	0	O	ME-SA	PanAsia	
viba_293	BHU/3/2009	cattle	90.8	0	O	ME-SA	Ind-2001	d
viba_705	KUW/3/97	bovine	90.7	0	O	ME-SA	Ind-2001	a
viba_541	OMN/7/2001	bovine	90.0	0	O	ME-SA	Ind-2001	b
viba_30238	MUR/19/2016	cattle	89.9	0	O	ME-SA	Ind-2001	e
viba_505	TUR/264/2009		89.6	0	O	ME-SA	PanAsia-2	SAN-09
viba_397	UAE/4/2008	gazelle	89.4	0	O	ME-SA	Ind-2001	c
viba_766	IRN/31/2009	cattle	89.4	0	O	ME-SA	PanAsia-2	FAR-09
viba_650	IRN/8/2005	ovine	89.4	0	O	ME-SA	PanAsia-2	
viba_491	TUR/257/2008		88.9	0	O	ME-SA	PanAsia-2	TER-08

Virus sample name:	TAI/18/2017
Sender reference:	126/17
Location of origin:	Lamphun
Country of origin:	Thailand
Date of collection:	25/12/2017
Host species:	cattle
Serotype:	O
Topotype:	ME-SA
Lineage:	Ind-2001
Sublineage:	e
Sequence length:	633
Ambiguities:	0
Material submitted for sequencing:	R3B1 BTy1
Harvest date of material:	29/11/2018
Primers:	O-1C244F/EUR-2B52R; O-1C272F/EUR-2B52R; FMD-3161F/FMD-4303R
Received for sequencing:	06/12/2018
Created:	08/12/2018
Last updated:	08/12/2018
VIBASys IDs: sample 37682, genome 37683, sequence viba_37684, sequencing info 37685	

Most Closely Related Sequences

sequence	virus name	Host	% Id.	# Ambig.	serotype	topotype	lineage	sublineage
viba_31595	Zabaikalskiy/3/RUS/2016	cattle	98.9	0	O	ME-SA	Ind-2001	e
viba_31082	BAN/GKa-236(pig)/2015	porcine	98.7	0	O	ME-SA	Ind-2001	e
viba_30859	Zabaikalskiy/2/RUS/2016	cattle	98.7	0	O	ME-SA	Ind-2001	e
viba_31573	170206/SKR/2017	cattle	98.7	0	O	ME-SA	Ind-2001	e
viba_30855	Zabaikalskiy/1/RUS/2016	cattle	98.7	0	O	ME-SA	Ind-2001	e
viba_31599	Zabaikalskiy/4/RUS/2016	cattle	98.6	0	O	ME-SA	Ind-2001	e
viba_32128	XJPS/CHA/2017		98.6	0	O	ME-SA	Ind-2001	e
viba_32124	XJBC/CHA/2017		98.6	0	O	ME-SA	Ind-2001	e
viba_33785	MYA/1/2017	cattle	98.6	0	O	ME-SA	Ind-2001	e
viba_37025	XJ/CHA/2017	cattle	98.6	0	O	ME-SA	Ind-2001	e

Most Closely Related Prototype Sequences

see http://www.wrlfmd.org/fmd_genotyping/prototypes.htm

sequence	virus name	Host	% Id.	# Ambig.	serotype	topotype	lineage	sublineage
viba_30238	MUR/19/2016	cattle	97.9	0	O	ME-SA	Ind-2001	e
viba_293	BHU/3/2009	cattle	93.7	0	O	ME-SA	Ind-2001	d
viba_541	OMN/7/2001	bovine	92.4	0	O	ME-SA	Ind-2001	b
viba_705	KUW/3/97	bovine	91.8	0	O	ME-SA	Ind-2001	a
viba_397	UAE/4/2008	gazelle	90.2	0	O	ME-SA	Ind-2001	c
viba_285	UKG/35/2001	porcine	88.7	0	O	ME-SA	PanAsia	
viba_766	IRN/31/2009	cattle	88.0	0	O	ME-SA	PanAsia-2	FAR-09
viba_650	IRN/8/2005	ovine	87.9	0	O	ME-SA	PanAsia-2	
viba_666	IRN/18/2010	cattle	87.8	0	O	ME-SA	PanAsia-2	BAL-09
viba_359	Manisa/TUR/69		87.8	0	O	ME-SA		

Virus sample name:	TAI/3/2018
Sender reference:	50/18
Location of origin:	Nakhon Si Thammarat
Country of origin:	Thailand
Date of collection:	09/07/2018
Host species:	cattle
Serotype:	O
Topotype:	ME-SA
Lineage:	PanAsia
Sublineage:	
Sequence length:	633
Ambiguities:	0
Material submitted for sequencing:	R3B2 BTy1
Harvest date of material:	29/11/2018
Primers:	O-1C244F/EUR-2B52R; O-1C272F/EUR-2B52R; FMD-3161F/FMD-4303R
Received for sequencing:	06/12/2018
Created:	08/12/2018
Last updated:	08/12/2018
VIBASys IDs: sample 37686, genome 37687, sequence viba_37688, sequencing info 37689	

Most Closely Related Sequences

sequence	virus name	Host	% Id.	# Ambig.	serotype	topotype	lineage	sublineage
viba_37696	TAI/5/2018	cattle	100.0	0	O	ME-SA	PanAsia	
viba_37668	TAI/12/2017	cattle	99.5	0	O	ME-SA	PanAsia	
viba_36461	VIT/18/2017	bovine	99.5	0	O	ME-SA	PanAsia	
viba_35454	BaTri/VIT/17-19372	cattle	99.2	0	O	ME-SA	PanAsia	
viba_37680	TAI/16/2017	cattle	99.2	0	O	ME-SA	PanAsia	
viba_36493	VIT/32/2017	bovine	99.2	0	O	ME-SA	PanAsia	
viba_36497	VIT/1/2018	bovine	99.2	0	O	ME-SA	PanAsia	
viba_36481	VIT/29/2017	bovine	99.2	0	O	ME-SA	PanAsia	
viba_36489	VIT/31/2017	bovine	99.1	0	O	ME-SA	PanAsia	
viba_36485	VIT/30/2017	bovine	98.9	0	O	ME-SA	PanAsia	

Most Closely Related Prototype Sequences

see http://www.wrlfmd.org/fmd_genotyping/prototypes.htm

sequence	virus name	Host	% Id.	# Ambig.	serotype	topotype	lineage	sublineage
viba_285	UKG/35/2001	porcine	91.5	0	O	ME-SA	PanAsia	
viba_705	KUW/3/97	bovine	90.8	0	O	ME-SA	Ind-2001	a
viba_293	BHU/3/2009	cattle	90.4	0	O	ME-SA	Ind-2001	d
viba_541	OMN/7/2001	bovine	90.2	0	O	ME-SA	Ind-2001	b
viba_505	TUR/264/2009		89.7	0	O	ME-SA	PanAsia-2	SAN-09
viba_766	IRN/31/2009	cattle	89.6	0	O	ME-SA	PanAsia-2	FAR-09
viba_30238	MUR/19/2016	cattle	89.5	0	O	ME-SA	Ind-2001	e
viba_397	UAE/4/2008	gazelle	89.3	0	O	ME-SA	Ind-2001	c
viba_650	IRN/8/2005	ovine	89.3	0	O	ME-SA	PanAsia-2	
viba_359	Manisa/TUR/69		89.3	0	O	ME-SA		

Virus sample name:	TAI/4/2018
Sender reference:	53-2/18
Location of origin:	Prachuap Khiri Khan
Country of origin:	Thailand
Date of collection:	09/07/2018
Host species:	cattle
Serotype:	O
Topotype:	ME-SA
Lineage:	PanAsia
Sublineage:	
Sequence length:	633
Ambiguities:	0
Material submitted for sequencing:	R3B1 BTy1
Harvest date of material:	29/11/2018
Primers:	O-1C244F/EUR-2B52R; O-1C272F/EUR-2B52R; FMD-3161F/FMD-4303R
Received for sequencing:	06/12/2018
Created:	08/12/2018
Last updated:	08/12/2018
VIBASys IDs: sample 37690, genome 37691, sequence viba_37692, sequencing info 37693	

Most Closely Related Sequences

sequence	virus name	Host	% Id.	# Ambig.	serotype	topotype	lineage	sublineage
viba_37668	TAI/12/2017	cattle	98.1	0	O	ME-SA	PanAsia	
viba_35454	BaTri/VIT/17-19372	cattle	97.8	0	O	ME-SA	PanAsia	
viba_37680	TAI/16/2017	cattle	97.8	0	O	ME-SA	PanAsia	
viba_36497	VIT/1/2018	bovine	97.8	0	O	ME-SA	PanAsia	
viba_36461	VIT/18/2017	bovine	97.8	0	O	ME-SA	PanAsia	
viba_36481	VIT/29/2017	bovine	97.8	0	O	ME-SA	PanAsia	
viba_37688	TAI/3/2018	cattle	97.6	0	O	ME-SA	PanAsia	
viba_37696	TAI/5/2018	cattle	97.6	0	O	ME-SA	PanAsia	
viba_36493	VIT/32/2017	bovine	97.5	0	O	ME-SA	PanAsia	
viba_36485	VIT/30/2017	bovine	97.5	0	O	ME-SA	PanAsia	

Most Closely Related Prototype Sequences

see http://www.wrlfmd.org/fmd_genotyping/prototypes.htm

sequence	virus name	Host	% Id.	# Ambig.	serotype	topotype	lineage	sublineage
viba_285	UKG/35/2001	porcine	90.4	0	O	ME-SA	PanAsia	
viba_293	BHU/3/2009	cattle	89.6	0	O	ME-SA	Ind-2001	d
viba_705	KUW/3/97	bovine	89.4	0	O	ME-SA	Ind-2001	a
viba_30238	MUR/19/2016	cattle	89.0	0	O	ME-SA	Ind-2001	e
viba_541	OMN/7/2001	bovine	89.0	0	O	ME-SA	Ind-2001	b
viba_650	IRN/8/2005	ovine	88.8	0	O	ME-SA	PanAsia-2	
viba_397	UAE/4/2008	gazelle	88.3	0	O	ME-SA	Ind-2001	c
viba_666	IRN/18/2010	cattle	88.0	0	O	ME-SA	PanAsia-2	BAL-09
viba_860	IRN/6/2015	cattle	88.0	0	O	ME-SA	PanAsia-2	QOM-15
viba_850	NEP/1/2015	cattle	87.8	1	O	ME-SA	PanAsia-2	KAT-15

Virus sample name:	TAI/5/2018
Sender reference:	49/18
Location of origin:	Nakhon Ratchasima
Country of origin:	Thailand
Date of collection:	08/08/2018
Host species:	cattle
Serotype:	O
Topotype:	ME-SA
Lineage:	PanAsia
Sublineage:	
Sequence length:	633
Ambiguities:	0
Material submitted for sequencing:	R3B3 BTy1
Harvest date of material:	29/11/2018
Primers:	O-1C244F/EUR-2B52R; O-1C272F/EUR-2B52R; FMD-3161F/FMD-4303R
Received for sequencing:	06/12/2018
Created:	08/12/2018
Last updated:	08/12/2018
VIBASys IDs: sample 37694, genome 37695, sequence viba_37696, sequencing info 37697	

Most Closely Related Sequences

sequence	virus name	Host	% Id.	# Ambig.	serotype	topotype	lineage	sublineage
viba_37688	TAI/3/2018	cattle	100.0	0	O	ME-SA	PanAsia	
viba_37668	TAI/12/2017	cattle	99.5	0	O	ME-SA	PanAsia	
viba_36461	VIT/18/2017	bovine	99.5	0	O	ME-SA	PanAsia	
viba_35454	BaTri/VIT/17-19372	cattle	99.2	0	O	ME-SA	PanAsia	
viba_37680	TAI/16/2017	cattle	99.2	0	O	ME-SA	PanAsia	
viba_36493	VIT/32/2017	bovine	99.2	0	O	ME-SA	PanAsia	
viba_36497	VIT/1/2018	bovine	99.2	0	O	ME-SA	PanAsia	
viba_36481	VIT/29/2017	bovine	99.2	0	O	ME-SA	PanAsia	
viba_36489	VIT/31/2017	bovine	99.1	0	O	ME-SA	PanAsia	
viba_36485	VIT/30/2017	bovine	98.9	0	O	ME-SA	PanAsia	

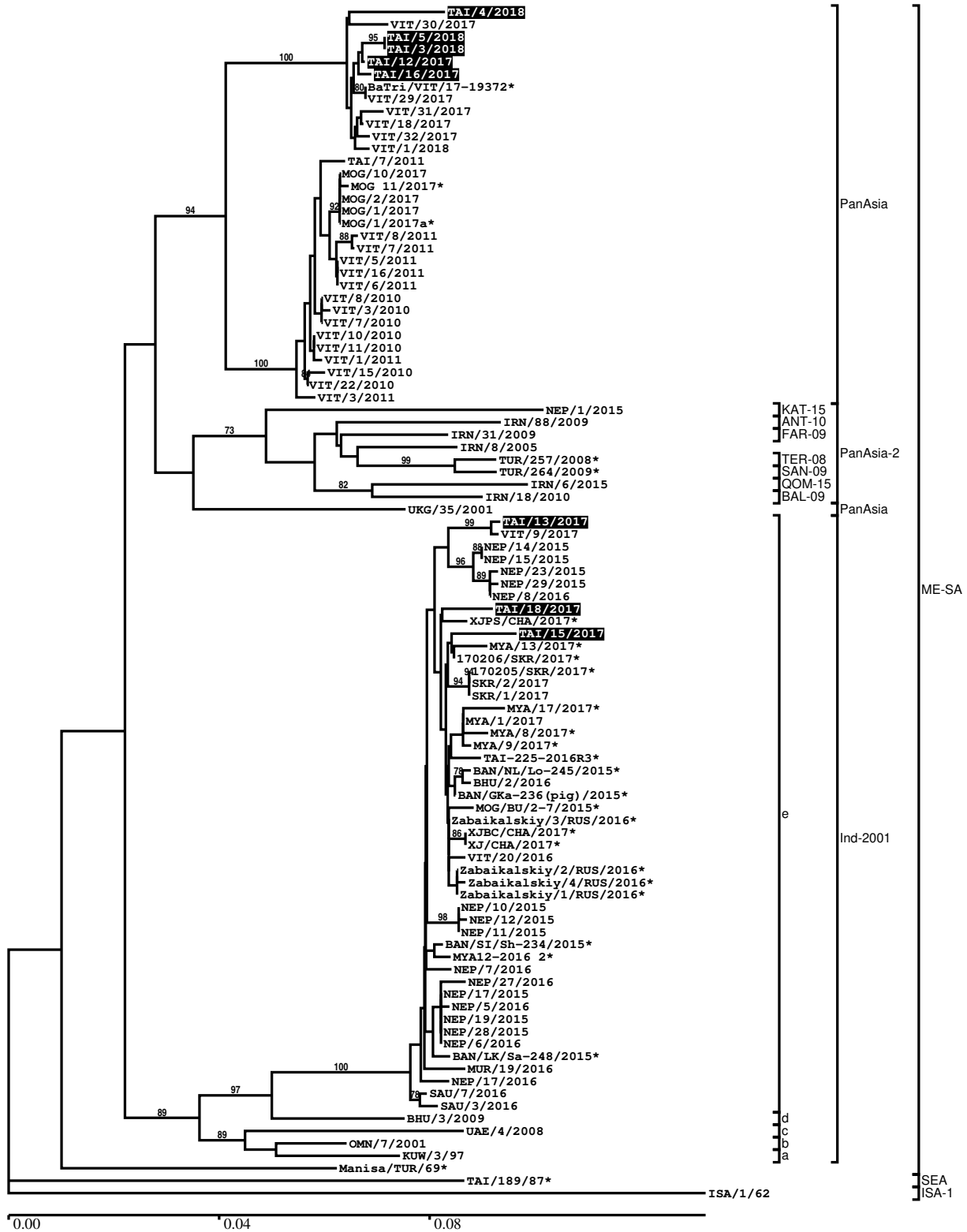
Most Closely Related Prototype Sequences

see http://www.wrlfmd.org/fmd_genotyping/prototypes.htm

sequence	virus name	Host	% Id.	# Ambig.	serotype	topotype	lineage	sublineage
viba_285	UKG/35/2001	porcine	91.5	0	O	ME-SA	PanAsia	
viba_705	KUW/3/97	bovine	90.8	0	O	ME-SA	Ind-2001	a
viba_293	BHU/3/2009	cattle	90.4	0	O	ME-SA	Ind-2001	d
viba_541	OMN/7/2001	bovine	90.2	0	O	ME-SA	Ind-2001	b
viba_505	TUR/264/2009		89.7	0	O	ME-SA	PanAsia-2	SAN-09
viba_766	IRN/31/2009	cattle	89.6	0	O	ME-SA	PanAsia-2	FAR-09
viba_30238	MUR/19/2016	cattle	89.5	0	O	ME-SA	Ind-2001	e
viba_397	UAE/4/2008	gazelle	89.3	0	O	ME-SA	Ind-2001	c
viba_650	IRN/8/2005	ovine	89.3	0	O	ME-SA	PanAsia-2	
viba_359	Manisa/TUR/69		89.3	0	O	ME-SA		

Report on FMDV O in Thailand in 2017, 2018

Batch: WRLFMD/2018/00030



*, not a WRLFMD Reference Number

Analysis Parameters

VP1 subsequence extractor:	vp1_O
Query sequence set:	WRLFMD/2018/00030-Thailand-O (8 sequences)
Sequence database set:	allseqs_O (3916 sequences)
Prototype sequence set:	!prototypes_O (49 sequences)
Number of related sequences reported:	10
Minimal VP1 subsequence match length	600
Sequence alignment method:	muscle (default parameters)
Sequence alignment length:	636
Phylogeny reconstruction method:	fdnadist, fneighbor
Number of bootstrap samples:	1000
Random seed for bootstrapping:	1
Displaying bootstrap values above:	70.0%
Number of sequences in tree capped at:	100
Number of prototype sequences in tree:	15
VIBASys version:	reflabs-1.1.2

Sequences in the Phylogenetic Tree

All sequences in the tree are in taxonomic group FMDV/O

label	accession	host(s)	lab	country	taxonomic information
TAI/4/2018	n/a	cattle	WRLFMD	Thailand	ME-SA/PanAsia
VIT/30/2017	n/a	bovine	WRLFMD	Vietnam	ME-SA/PanAsia
TAI/5/2018	n/a	cattle	WRLFMD	Thailand	ME-SA/PanAsia
TAI/3/2018	n/a	cattle	WRLFMD	Thailand	ME-SA/PanAsia
TAI/12/2017	n/a	cattle	WRLFMD	Thailand	ME-SA/PanAsia
TAI/16/2017	n/a	cattle	WRLFMD	Thailand	ME-SA/PanAsia
BaTri/VIT/17-19372*	n/a	cattle	RAHO6	Vietnam	ME-SA/PanAsia
VIT/29/2017	n/a	bovine	WRLFMD	Vietnam	ME-SA/PanAsia
VIT/31/2017	n/a	bovine	WRLFMD	Vietnam	ME-SA/PanAsia
VIT/18/2017	n/a	bovine	WRLFMD	Vietnam	ME-SA/PanAsia
VIT/32/2017	n/a	bovine	WRLFMD	Vietnam	ME-SA/PanAsia
VIT/1/2018	n/a	bovine	WRLFMD	Vietnam	ME-SA/PanAsia
TAI/7/2011	n/a	cattle	WRLFMD	Thailand	ME-SA/PanAsia
MOG/10/2017	n/a	cattle	WRLFMD	Mongolia	ME-SA/PanAsia
MOG 11/2017*	n/a	cattle	ARRIAH	Mongolia	ME-SA/PanAsia
MOG/2/2017	n/a	cattle	WRLFMD	Mongolia	ME-SA/PanAsia
MOG/1/2017	n/a	cattle	WRLFMD	Mongolia	ME-SA/PanAsia
MOG/1/2017a*	n/a	cattle	ARRIAH	Mongolia	ME-SA/PanAsia
VIT/8/2011	n/a	water buffalo	WRLFMD	Vietnam	ME-SA/PanAsia
VIT/7/2011	n/a	cattle	WRLFMD	Vietnam	ME-SA/PanAsia
VIT/5/2011	n/a	cattle	WRLFMD	Vietnam	ME-SA/PanAsia
VIT/16/2011	n/a	water buffalo	WRLFMD	Vietnam	ME-SA/PanAsia
VIT/6/2011	n/a	water buffalo	WRLFMD	Vietnam	ME-SA/PanAsia
VIT/8/2010	n/a	cattle	WRLFMD	Vietnam	ME-SA/PanAsia
VIT/3/2010	n/a	porcine	WRLFMD	Vietnam	ME-SA/PanAsia
VIT/7/2010	n/a	cattle	WRLFMD	Vietnam	ME-SA/PanAsia
VIT/10/2010	n/a	cattle	WRLFMD	Vietnam	ME-SA/PanAsia
VIT/11/2010	n/a	cattle	WRLFMD	Vietnam	ME-SA/PanAsia
VIT/1/2011	n/a	water buffalo	WRLFMD	Vietnam	ME-SA/PanAsia
VIT/15/2010	n/a	cattle	WRLFMD	Vietnam	ME-SA/PanAsia
VIT/22/2010	n/a	cattle	WRLFMD	Vietnam	ME-SA/PanAsia
VIT/3/2011	n/a	porcine	WRLFMD	Vietnam	ME-SA/PanAsia
NEP/1/2015	n/a	cattle	WRLFMD	Nepal	ME-SA/PanAsia-2/KAT-15
IRN/88/2009	KY091282	n/a	WRLFMD	Iran	ME-SA/PanAsia-2/ANT-10
IRN/31/2009	KY091284	cattle	WRLFMD	Iran	ME-SA/PanAsia-2/FAR-09
IRN/8/2005	KY091281	ovine	WRLFMD	Iran	ME-SA/PanAsia-2

continued on next page

label	accession	host(s)	lab	country	taxonomic information
TUR/257/2008*	n/a	n/a	FMDI-Ankara	Turkey	ME-SA/PanAsia-2/TER-08
TUR/264/2009*	n/a	n/a	FMDI-Ankara	Turkey	ME-SA/PanAsia-2/SAN-09
IRN/6/2015	n/a	cattle	WRLFMD	Iran	ME-SA/PanAsia-2/QOM-15
IRN/18/2010	KY091283	cattle	WRLFMD	Iran	ME-SA/PanAsia-2/BAL-09
UKG/35/2001	AJ539141	porcine	PIADC	United Kingdom	ME-SA/PanAsia
TAI/13/2017	n/a	cattle	WRLFMD	Thailand	ME-SA/Ind-2001/e
VIT/9/2017	n/a	bovine	WRLFMD	Vietnam	ME-SA/Ind-2001/e
NEP/14/2015	MG972546	cattle	WRLFMD	Nepal	ME-SA/Ind-2001/e
NEP/15/2015	MG972547	cattle	WRLFMD	Nepal	ME-SA/Ind-2001/e
NEP/23/2015	MG972550	cattle	WRLFMD	Nepal	ME-SA/Ind-2001/e
NEP/29/2015	MG972553	cattle	WRLFMD	Nepal	ME-SA/Ind-2001/e
NEP/8/2016	MG972556	cattle	WRLFMD	Nepal	ME-SA/Ind-2001/e
TAI/18/2017	n/a	cattle	WRLFMD	Thailand	ME-SA/Ind-2001/e
XJPS/CHA/2017*	KY696707	n/a	LVRI	China	ME-SA/Ind-2001/e
TAI/15/2017	n/a	cattle	WRLFMD	Thailand	ME-SA/Ind-2001/e
MYA/13/2017*	MG972527	cattle	TRRL	Myanmar	ME-SA/Ind-2001/e
170206/SKR/2017*	n/a	cattle	QIA	Republic of Korea (South Korea)	ME-SA/Ind-2001/e
170205/SKR/2017*	n/a	cattle	QIA	Republic of Korea (South Korea)	ME-SA/Ind-2001/e
SKR/2/2017	MG972600	cattle	WRLFMD	Republic of Korea (South Korea)	ME-SA/Ind-2001/e
SKR/1/2017	MG972599	cattle	WRLFMD	Republic of Korea (South Korea)	ME-SA/Ind-2001/e
MYA/17/2017*	MG972528	cattle	TRRL	Myanmar	ME-SA/Ind-2001/e
MYA/1/2017	MG972517	cattle	WRLFMD	Myanmar	ME-SA/Ind-2001/e
MYA/8/2017*	MG972522	water buffalo	TRRL	Myanmar	ME-SA/Ind-2001/e
MYA/9/2017*	MG972523	cattle	TRRL	Myanmar	ME-SA/Ind-2001/e
TAI-225-2016R3*	MG972601	cattle	TRRL	Thailand	ME-SA/Ind-2001/e
BAN/NL/Lo-245/2015*	KY077611	cattle	Univ Dhaka	Bangladesh	ME-SA/Ind-2001/e
BHU/2/2016	MG972480	cattle	WRLFMD	Bhutan	ME-SA/Ind-2001/e
BAN/GKa-236(pig)/2015*	KX712091	porcine	Univ Dhaka	Bangladesh	ME-SA/Ind-2001/e
MOG/BU/2-7/2015*	LC320038	cattle	NIAH-Japan	Mongolia	ME-SA/Ind-2001/e
Zabaikalskiy/3/RUS/2016*	MG972584	cattle	ARRIAH	Russia	ME-SA/Ind-2001/e
XJBC/CHA/2017*	KY696708	n/a	LVRI	China	ME-SA/Ind-2001/e
XJ/CHA/2017*	MF461724	cattle	LVRI	China	ME-SA/Ind-2001/e
VIT/20/2016	MG972619	cattle	WRLFMD	Vietnam	ME-SA/Ind-2001/e
Zabaikalskiy/2/RUS/2016*	MG972583	cattle	ARRIAH	Russia	ME-SA/Ind-2001/e
Zabaikalskiy/4/RUS/2016*	MG972585	cattle	ARRIAH	Russia	ME-SA/Ind-2001/e
Zabaikalskiy/1/RUS/2016*	MG983720	cattle	ARRIAH	Russia	ME-SA/Ind-2001/e
NEP/10/2015	MG972543	cattle	WRLFMD	Nepal	ME-SA/Ind-2001/e
NEP/12/2015	MG972545	cattle	WRLFMD	Nepal	ME-SA/Ind-2001/e
NEP/11/2015	MG972544	cattle	WRLFMD	Nepal	ME-SA/Ind-2001/e
BAN/SI/Sh-234/2015*	KY077610	cattle	Univ Dhaka	Bangladesh	ME-SA/Ind-2001/e
MYA12-2016 2*	n/a	n/a	TRRL	Myanmar	ME-SA/Ind-2001/e
NEP/7/2016	KY449055	cattle	WRLFMD	Nepal	ME-SA/Ind-2001/e
NEP/27/2016	MG972569	cattle	WRLFMD	Nepal	ME-SA/Ind-2001/e
NEP/17/2015	KY449050	cattle	WRLFMD	Nepal	ME-SA/Ind-2001/e
NEP/5/2016	KY449053	cattle	WRLFMD	Nepal	ME-SA/Ind-2001/e
NEP/19/2015	KY449051	cattle	WRLFMD	Nepal	ME-SA/Ind-2001/e
NEP/28/2015	KY449052	cattle	WRLFMD	Nepal	ME-SA/Ind-2001/e
NEP/6/2016	KY449054	cattle	WRLFMD	Nepal	ME-SA/Ind-2001/e
BAN/LK/Sa-248/2015*	KY077612	cattle	Univ Dhaka	Bangladesh	ME-SA/Ind-2001/e
MUR/19/2016	MG972510	cattle	WRLFMD	Mauritius	ME-SA/Ind-2001/e
NEP/17/2016	MG972563	cattle	WRLFMD	Nepal	ME-SA/Ind-2001/e
SAU/7/2016	MG972596	bovine	WRLFMD	Saudi Arabia	ME-SA/Ind-2001/e
SAU/3/2016	MG972595	bovine	WRLFMD	Saudi Arabia	ME-SA/Ind-2001/e
BHU/3/2009	KM921814	cattle	WRLFMD	Bhutan	ME-SA/Ind-2001/d
UAE/4/2008	KM921876	gazelle	WRLFMD	United Arab Emirates	ME-SA/Ind-2001/c
OMN/7/2001	DQ164941	bovine	WRLFMD	Oman	ME-SA/Ind-2001/b
KUW/3/97	DQ164904	bovine	WRLFMD	Kuwait	ME-SA/Ind-2001/a

continued on next page

label	accession	host(s)	lab	country	taxonomic information
Manisa/TUR/69*	AY593823	n/a	PIADC	Turkey	ME-SA
TAI/189/87*	KY091288	bovine	TRRL	Thailand	SEA
ISA/1/62	AJ303500	n/a	WRLFMD	Indonesia	ISA-1

*, not a WRLFMD Reference Number

n/a, not available