

# FAO World Reference Laboratory for Foot-and-Mouth Disease (WRLFMD)

## Genotyping Report

FMDV serotype: O  
Country: Sri Lanka  
Year: 2018, 2019  
Batch: WRLFMD/2020/00001  
No. of sequences: 15  
Report date: 30th January 2020  
Report generated by: Nick Knowles  
Report checked by: Jemma Wadsworth



Copyright © 2020 The Pirbright Institute, Ash Road, Pirbright, Woking GU24 0NF, United Kingdom.

www: <http://www.wrlfmd.org/>

email: [reporting@pirbright.ac.uk](mailto:reporting@pirbright.ac.uk)

The contents of this report should not be reproduced without permission.

Virus sample name:	SRL/16/2018
Sender reference:	SL/FMD/WRL/18/14
Location of origin:	Alayadivembu, Ampara
Country of origin:	Sri Lanka
Date of collection:	23/05/2018
Host species:	cattle
Serotype:	O
Topotype:	ME-SA
Lineage:	
Sublineage:	
Sequence length:	633
Ambiguities:	0
Material submitted for sequencing:	BTy1
Harvest date of material:	15/01/2020
Primers:	O-1C244F/EUR-2B52R;FMD-3161F/FMD-4303R
Received for sequencing:	28/01/2020
Created:	30/01/2020
Last updated:	30/01/2020
VIBASys IDs: sample 43910, genome 43911, sequence viba_43912, sequencing info 43913	

#### Most Closely Related Sequences

sequence	virus name	Host	% Id.	# Ambig.	serotype	topotype	lineage	sublineage
viba_43916	SRL/17/2018	cattle	99.5	0	O	ME-SA		
viba_43960	SRL/14/2019	cattle	98.7	0	O	ME-SA		
viba_14662	IND/32/2010	cattle	92.6	0	O	ME-SA		
viba_32917	IND/56/2011	cattle	92.4	0	O	ME-SA		
viba_31258	IND/23/2012	cattle	92.4	0	O	ME-SA		
viba_33005	IND/172/2011	cattle	92.3	0	O	ME-SA		
viba_31062	BD SI 5 2013	cattle	92.3	0	O	ME-SA		
viba_31078	BD BAU ML2 2013	cattle	91.9	0	O	ME-SA		
viba_32901	IND/35/2011	cattle	91.9	0	O	ME-SA		
viba_31074	BD BAU ML1 2013	cattle	91.8	0	O	ME-SA		

#### Most Closely Related Prototype Sequences

see <http://www.wrlfmd.org/fmdv-genome/fmd-prototype-strains>

sequence	virus name	Host	% Id.	# Ambig.	serotype	topotype	lineage	sublineage
viba_719	IRN/88/2009		91.2	0	O	ME-SA	PanAsia-2	ANT-10
viba_766	IRN/31/2009	cattle	90.7	0	O	ME-SA	PanAsia-2	FAR-09
viba_666	IRN/18/2010	cattle	90.4	0	O	ME-SA	PanAsia-2	BAL-09
viba_505	TUR/264/2009		90.4	0	O	ME-SA	PanAsia-2	SAN-09
viba_650	IRN/8/2005	ovine	90.2	0	O	ME-SA	PanAsia-2	
viba_491	TUR/257/2008		90.0	0	O	ME-SA	PanAsia-2	TER-08
viba_860	IRN/6/2015	cattle	89.7	0	O	ME-SA	PanAsia-2	QOM-15
viba_705	KUW/3/97	bovine	89.7	0	O	ME-SA	Ind-2001	a
viba_354	PAK/16/2010	cattle	89.7	0	O	ME-SA	PanAsia-2	PUN-10
viba_285	UKG/35/2001	porcine	89.4	0	O	ME-SA	PanAsia	

Virus sample name:	SRL/17/2018
Sender reference:	SL/FMD/WRL/18/15
Location of origin:	Dehiattakandiya, Ampara
Country of origin:	Sri Lanka
Date of collection:	25/05/2018
Host species:	cattle
Serotype:	O
Topotype:	ME-SA
Lineage:	
Sublineage:	
Sequence length:	633
Ambiguities:	0
Material submitted for sequencing:	BTy2
Harvest date of material:	17/01/2020
Primers:	O-1C244F/EUR-2B52R;FMD-3161F/FMD-4303R
Received for sequencing:	28/01/2020
Created:	30/01/2020
Last updated:	30/01/2020
VIBASys IDs: sample 43914, genome 43915, sequence viba_43916, sequencing info 43917	

#### Most Closely Related Sequences

sequence	virus name	Host	% Id.	# Ambig.	serotype	topotype	lineage	sublineage
viba_43912	SRL/16/2018	cattle	99.5	0	O	ME-SA		
viba_43960	SRL/14/2019	cattle	98.9	0	O	ME-SA		
viba_32917	IND/56/2011	cattle	92.6	0	O	ME-SA		
viba_31258	IND/23/2012	cattle	92.6	0	O	ME-SA		
viba_14662	IND/32/2010	cattle	92.4	0	O	ME-SA		
viba_33005	IND/172/2011	cattle	92.4	0	O	ME-SA		
viba_31062	BD SI 5 2013	cattle	92.4	0	O	ME-SA		
viba_31078	BD BAU ML2 2013	cattle	92.1	0	O	ME-SA		
viba_32901	IND/35/2011	cattle	92.1	0	O	ME-SA		
viba_31074	BD BAU ML1 2013	cattle	91.9	0	O	ME-SA		

#### Most Closely Related Prototype Sequences

see <http://www.wrlfmd.org/fmdv-genome/fmd-prototype-strains>

sequence	virus name	Host	% Id.	# Ambig.	serotype	topotype	lineage	sublineage
viba_719	IRN/88/2009		90.7	0	O	ME-SA	PanAsia-2	ANT-10
viba_766	IRN/31/2009	cattle	90.5	0	O	ME-SA	PanAsia-2	FAR-09
viba_666	IRN/18/2010	cattle	90.2	0	O	ME-SA	PanAsia-2	BAL-09
viba_505	TUR/264/2009		90.2	0	O	ME-SA	PanAsia-2	SAN-09
viba_650	IRN/8/2005	ovine	90.0	0	O	ME-SA	PanAsia-2	
viba_491	TUR/257/2008		89.9	0	O	ME-SA	PanAsia-2	TER-08
viba_705	KUW/3/97	bovine	89.9	0	O	ME-SA	Ind-2001	a
viba_860	IRN/6/2015	cattle	89.6	0	O	ME-SA	PanAsia-2	QOM-15
viba_354	PAK/16/2010	cattle	89.6	0	O	ME-SA	PanAsia-2	PUN-10
viba_285	UKG/35/2001	porcine	89.3	0	O	ME-SA	PanAsia	

Virus sample name:	SRL/1/2019
Sender reference:	SL/FMD/WRL/19/01
Location of origin:	Thelippalai, Jaffna
Country of origin:	Sri Lanka
Date of collection:	10/01/2019
Host species:	cattle
Serotype:	O
Topotype:	ME-SA
Lineage:	Ind-2001
Sublineage:	d
Sequence length:	633
Ambiguities:	0
Material submitted for sequencing:	BTy1
Harvest date of material:	14/01/2020
Primers:	O-1C244F/EUR-2B52R;FMD-3161F/FMD-4303R
Received for sequencing:	28/01/2020
Created:	30/01/2020
Last updated:	30/01/2020
VIBASys IDs: sample 43918, genome 43919, sequence viba_43920, sequencing info 43921	

### Most Closely Related Sequences

sequence	virus name	Host	% Id.	# Ambig.	serotype	topotype	lineage	sublineage
viba_35309	SRL/15/2016	cattle	96.7	0	O	ME-SA	Ind-2001	d
viba_23252	SRL/29/2014	water buffalo	95.1	0	O	ME-SA	Ind-2001	d
viba_23227	SRL/11/2014	porcine	95.1	0	O	ME-SA	Ind-2001	d
viba_23260	SRL/31/2014	water buffalo	95.1	0	O	ME-SA	Ind-2001	d
viba_23256	SRL/30/2014	water buffalo	95.1	0	O	ME-SA	Ind-2001	d
viba_23203	SRL/3/2014	bovine	95.1	0	O	ME-SA	Ind-2001	d
viba_23264	SRL/32/2014	water buffalo	95.1	0	O	ME-SA	Ind-2001	d
viba_23195	SRL/1/2014	bovine	94.9	0	O	ME-SA	Ind-2001	d
viba_31367	IND699/2013	Indian elephant	94.9	0	O	ME-SA	Ind-2001	d
viba_23211	SRL/6/2014	bovine	94.9	0	O	ME-SA	Ind-2001	d

### Most Closely Related Prototype Sequences

see <http://www.wrlfmd.org/fmdv-genome/fmd-prototype-strains>

sequence	virus name	Host	% Id.	# Ambig.	serotype	topotype	lineage	sublineage
viba_293	BHU/3/2009	cattle	92.9	0	O	ME-SA	Ind-2001	d
viba_541	OMN/7/2001	bovine	91.3	0	O	ME-SA	Ind-2001	b
viba_30238	MUR/19/2016	cattle	91.2	0	O	ME-SA	Ind-2001	e
viba_705	KUW/3/97	bovine	90.8	0	O	ME-SA	Ind-2001	a
viba_397	UAE/4/2008	gazelle	89.9	0	O	ME-SA	Ind-2001	c
viba_719	IRN/88/2009		89.1	0	O	ME-SA	PanAsia-2	ANT-10
viba_860	IRN/6/2015	cattle	88.6	0	O	ME-SA	PanAsia-2	QOM-15
viba_285	UKG/35/2001	porcine	88.6	0	O	ME-SA	PanAsia	
viba_666	IRN/18/2010	cattle	88.3	0	O	ME-SA	PanAsia-2	BAL-09
viba_766	IRN/31/2009	cattle	88.1	0	O	ME-SA	PanAsia-2	FAR-09

Virus sample name:	SRL/2/2019
Sender reference:	SL/FMD/WRL/19/02
Location of origin:	Manthai West, Vavuniya
Country of origin:	Sri Lanka
Date of collection:	14/02/2019
Host species:	cattle
Serotype:	O
Topotype:	ME-SA
Lineage:	Ind-2001
Sublineage:	d
Sequence length:	633
Ambiguities:	0
Material submitted for sequencing:	BTy1
Harvest date of material:	14/01/2020
Primers:	O-1C244F/EUR-2B52R;FMD-3161F/FMD-4303R
Received for sequencing:	28/01/2020
Created:	30/01/2020
Last updated:	30/01/2020

VIBASys IDs: sample 43922, genome 43923, sequence viba\_43924, sequencing info 43925

#### Most Closely Related Sequences

sequence	virus name	Host	% Id.	# Ambig.	serotype	topotype	lineage	sublineage
viba_43956	SRL/13/2019	cattle	99.8	0	O	ME-SA	Ind-2001	d
viba_43936	SRL/6/2019	cattle	99.8	0	O	ME-SA	Ind-2001	d
viba_43944	SRL/8/2019	cattle	99.7	0	O	ME-SA	Ind-2001	d
viba_43948	SRL/10/2019	cattle	99.7	0	O	ME-SA	Ind-2001	d
viba_43968	SRL/17/2019	cattle	99.2	0	O	ME-SA	Ind-2001	d
viba_43940	SRL/7/2019	cattle	99.2	0	O	ME-SA	Ind-2001	d
viba_43952	SRL/12/2019	porcine	99.1	0	O	ME-SA	Ind-2001	d
viba_43964	SRL/16/2019	cattle	98.9	0	O	ME-SA	Ind-2001	d
viba_35313	SRL/3/2017	cattle	97.5	0	O	ME-SA	Ind-2001	d
viba_36913	SRL/9/2018	cattle	96.8	0	O	ME-SA	Ind-2001	d

#### Most Closely Related Prototype Sequences

see <http://www.wrlfmd.org/fmdv-genome/fmd-prototype-strains>

sequence	virus name	Host	% Id.	# Ambig.	serotype	topotype	lineage	sublineage
viba_293	BHU/3/2009	cattle	92.6	0	O	ME-SA	Ind-2001	d
viba_541	OMN/7/2001	bovine	91.6	0	O	ME-SA	Ind-2001	b
viba_705	KUW/3/97	bovine	91.5	0	O	ME-SA	Ind-2001	a
viba_30238	MUR/19/2016	cattle	91.1	0	O	ME-SA	Ind-2001	e
viba_397	UAE/4/2008	gazelle	90.0	0	O	ME-SA	Ind-2001	c
viba_860	IRN/6/2015	cattle	88.8	0	O	ME-SA	PanAsia-2	QOM-15
viba_285	UKG/35/2001	porcine	88.5	0	O	ME-SA	PanAsia	
viba_719	IRN/88/2009		88.2	0	O	ME-SA	PanAsia-2	ANT-10
viba_666	IRN/18/2010	cattle	87.6	0	O	ME-SA	PanAsia-2	BAL-09
viba_766	IRN/31/2009	cattle	87.6	0	O	ME-SA	PanAsia-2	FAR-09

Virus sample name:	SRL/3/2019
Sender reference:	SL/FMD/WRL/19/03
Location of origin:	Vavuniya, Vavuniya
Country of origin:	Sri Lanka
Date of collection:	01/03/2019
Host species:	cattle
Serotype:	O
Topotype:	ME-SA
Lineage:	Ind-2001
Sublineage:	d
Sequence length:	633
Ambiguities:	0
Material submitted for sequencing:	BTy1
Harvest date of material:	14/01/2020
Primers:	O-1C244F/EUR-2B52R;FMD-3161F/FMD-4303R
Received for sequencing:	28/01/2020
Created:	30/01/2020
Last updated:	30/01/2020
VIBASys IDs: sample 43926, genome 43927, sequence viba_43928, sequencing info 43929	

#### Most Closely Related Sequences

sequence	virus name	Host	% Id.	# Ambig.	serotype	topotype	lineage	sublineage
viba_36897	SRL/4/2018	cattle	99.7	0	O	ME-SA	Ind-2001	d
viba_36893	SRL/2/2018	cattle	99.5	0	O	ME-SA	Ind-2001	d
viba_36905	SRL/6/2018	cattle	99.4	0	O	ME-SA	Ind-2001	d
viba_36901	SRL/5/2018	cattle	99.4	0	O	ME-SA	Ind-2001	d
viba_36909	SRL/7/2018	cattle	98.9	0	O	ME-SA	Ind-2001	d
viba_35305	SRL/12/2016	cattle	98.6	0	O	ME-SA	Ind-2001	d
viba_35301	SRL/11/2016	cattle	98.3	0	O	ME-SA	Ind-2001	d
viba_23195	SRL/1/2014	bovine	97.0	0	O	ME-SA	Ind-2001	d
viba_23211	SRL/6/2014	bovine	97.0	0	O	ME-SA	Ind-2001	d
viba_23207	SRL/5/2014	bovine	97.0	0	O	ME-SA	Ind-2001	d

#### Most Closely Related Prototype Sequences

see <http://www.wrlfmd.org/fmdv-genome/fmd-prototype-strains>

sequence	virus name	Host	% Id.	# Ambig.	serotype	topotype	lineage	sublineage
viba_293	BHU/3/2009	cattle	95.4	0	O	ME-SA	Ind-2001	d
viba_541	OMN/7/2001	bovine	92.4	0	O	ME-SA	Ind-2001	b
viba_705	KUW/3/97	bovine	91.9	0	O	ME-SA	Ind-2001	a
viba_30238	MUR/19/2016	cattle	91.5	0	O	ME-SA	Ind-2001	e
viba_397	UAE/4/2008	gazelle	90.0	0	O	ME-SA	Ind-2001	c
viba_766	IRN/31/2009	cattle	88.6	0	O	ME-SA	PanAsia-2	FAR-09
viba_666	IRN/18/2010	cattle	88.5	0	O	ME-SA	PanAsia-2	BAL-09
viba_285	UKG/35/2001	porcine	88.5	0	O	ME-SA	PanAsia	
viba_650	IRN/8/2005	ovine	88.2	0	O	ME-SA	PanAsia-2	
viba_491	TUR/257/2008		87.6	0	O	ME-SA	PanAsia-2	TER-08

Virus sample name:	SRL/5/2019
Sender reference:	SL/FMD/WRL/19/06
Location of origin:	Vavuniya, Vavuniya
Country of origin:	Sri Lanka
Date of collection:	04/11/2019
Host species:	cattle
Serotype:	O
Topotype:	ME-SA
Lineage:	Ind-2001
Sublineage:	d
Sequence length:	633
Ambiguities:	0
Material submitted for sequencing:	BTy1
Harvest date of material:	15/01/2020
Primers:	O-1C244F/EUR-2B52R;FMD-3161F/FMD-4303R
Received for sequencing:	28/01/2020
Created:	30/01/2020
Last updated:	30/01/2020

VIBASys IDs: sample 43930, genome 43931, sequence viba\_43932, sequencing info 43933

#### Most Closely Related Sequences

sequence	virus name	Host	% Id.	# Ambig.	serotype	topotype	lineage	sublineage
viba_36913	SRL/9/2018	cattle	99.1	0	O	ME-SA	Ind-2001	d
viba_35313	SRL/3/2017	cattle	98.7	0	O	ME-SA	Ind-2001	d
viba_43968	SRL/17/2019	cattle	97.0	0	O	ME-SA	Ind-2001	d
viba_43940	SRL/7/2019	cattle	97.0	0	O	ME-SA	Ind-2001	d
viba_43952	SRL/12/2019	porcine	96.8	0	O	ME-SA	Ind-2001	d
viba_43956	SRL/13/2019	cattle	96.7	0	O	ME-SA	Ind-2001	d
viba_43936	SRL/6/2019	cattle	96.7	0	O	ME-SA	Ind-2001	d
viba_43964	SRL/16/2019	cattle	96.7	0	O	ME-SA	Ind-2001	d
viba_43924	SRL/2/2019	cattle	96.5	0	O	ME-SA	Ind-2001	d
viba_43944	SRL/8/2019	cattle	96.5	0	O	ME-SA	Ind-2001	d

#### Most Closely Related Prototype Sequences

see <http://www.wrlfmd.org/fmdv-genome/fmd-prototype-strains>

sequence	virus name	Host	% Id.	# Ambig.	serotype	topotype	lineage	sublineage
viba_293	BHU/3/2009	cattle	93.8	0	O	ME-SA	Ind-2001	d
viba_30238	MUR/19/2016	cattle	91.5	0	O	ME-SA	Ind-2001	e
viba_541	OMN/7/2001	bovine	91.5	0	O	ME-SA	Ind-2001	b
viba_705	KUW/3/97	bovine	91.3	0	O	ME-SA	Ind-2001	a
viba_397	UAE/4/2008	gazelle	90.0	0	O	ME-SA	Ind-2001	c
viba_766	IRN/31/2009	cattle	88.7	0	O	ME-SA	PanAsia-2	FAR-09
viba_666	IRN/18/2010	cattle	88.6	0	O	ME-SA	PanAsia-2	BAL-09
viba_285	UKG/35/2001	porcine	88.2	0	O	ME-SA	PanAsia	
viba_719	IRN/88/2009		88.1	0	O	ME-SA	PanAsia-2	ANT-10
viba_860	IRN/6/2015	cattle	88.1	0	O	ME-SA	PanAsia-2	QOM-15

Virus sample name:	SRL/6/2019
Sender reference:	SL/FMD/WRL/19/07
Location of origin:	Galnewa, Anuradhapura
Country of origin:	Sri Lanka
Date of collection:	13/11/2019
Host species:	cattle
Serotype:	O
Topotype:	ME-SA
Lineage:	Ind-2001
Sublineage:	d
Sequence length:	633
Ambiguities:	0
Material submitted for sequencing:	BTy1
Harvest date of material:	16/01/2020
Primers:	O-1C244F/EUR-2B52R;FMD-3161F/FMD-4303R
Received for sequencing:	28/01/2020
Created:	30/01/2020
Last updated:	30/01/2020

VIBASys IDs: sample 43934, genome 43935, sequence viba\_43936, sequencing info 43937

#### Most Closely Related Sequences

sequence	virus name	Host	% Id.	# Ambig.	serotype	topotype	lineage	sublineage
viba_43956	SRL/13/2019	cattle	100.0	0	O	ME-SA	Ind-2001	d
viba_43924	SRL/2/2019	cattle	99.8	0	O	ME-SA	Ind-2001	d
viba_43944	SRL/8/2019	cattle	99.8	0	O	ME-SA	Ind-2001	d
viba_43948	SRL/10/2019	cattle	99.8	0	O	ME-SA	Ind-2001	d
viba_43968	SRL/17/2019	cattle	99.4	0	O	ME-SA	Ind-2001	d
viba_43940	SRL/7/2019	cattle	99.4	0	O	ME-SA	Ind-2001	d
viba_43952	SRL/12/2019	porcine	99.2	0	O	ME-SA	Ind-2001	d
viba_43964	SRL/16/2019	cattle	99.1	0	O	ME-SA	Ind-2001	d
viba_35313	SRL/3/2017	cattle	97.6	0	O	ME-SA	Ind-2001	d
viba_36913	SRL/9/2018	cattle	97.0	0	O	ME-SA	Ind-2001	d

#### Most Closely Related Prototype Sequences

see <http://www.wrlfmd.org/fmdv-genome/fmd-prototype-strains>

sequence	virus name	Host	% Id.	# Ambig.	serotype	topotype	lineage	sublineage
viba_293	BHU/3/2009	cattle	92.7	0	O	ME-SA	Ind-2001	d
viba_541	OMN/7/2001	bovine	91.8	0	O	ME-SA	Ind-2001	b
viba_705	KUW/3/97	bovine	91.6	0	O	ME-SA	Ind-2001	a
viba_30238	MUR/19/2016	cattle	91.4	0	O	ME-SA	Ind-2001	e
viba_397	UAE/4/2008	gazelle	90.2	0	O	ME-SA	Ind-2001	c
viba_860	IRN/6/2015	cattle	88.9	0	O	ME-SA	PanAsia-2	QOM-15
viba_285	UKG/35/2001	porcine	88.5	0	O	ME-SA	PanAsia	
viba_719	IRN/88/2009		88.3	0	O	ME-SA	PanAsia-2	ANT-10
viba_666	IRN/18/2010	cattle	87.8	0	O	ME-SA	PanAsia-2	BAL-09
viba_766	IRN/31/2009	cattle	87.8	0	O	ME-SA	PanAsia-2	FAR-09



Virus sample name:	SRL/7/2019
Sender reference:	SL/FMD/WRL/19/08
Location of origin:	Galnewa, Anuradhapura
Country of origin:	Sri Lanka
Date of collection:	13/11/2019
Host species:	cattle
Serotype:	O
Topotype:	ME-SA
Lineage:	Ind-2001
Sublineage:	d
Sequence length:	633
Ambiguities:	0
Material submitted for sequencing:	BTy1
Harvest date of material:	15/01/2020
Primers:	O-1C244F/EUR-2B52R;FMD-3161F/FMD-4303R
Received for sequencing:	28/01/2020
Created:	30/01/2020
Last updated:	30/01/2020
VIBASys IDs: sample 43938, genome 43939, sequence viba_43940, sequencing info 43941	

#### Most Closely Related Sequences

sequence	virus name	Host	% Id.	# Ambig.	serotype	topotype	lineage	sublineage
viba_43968	SRL/17/2019	cattle	100.0	0	O	ME-SA	Ind-2001	d
viba_43952	SRL/12/2019	porcine	99.5	0	O	ME-SA	Ind-2001	d
viba_43956	SRL/13/2019	cattle	99.4	0	O	ME-SA	Ind-2001	d
viba_43936	SRL/6/2019	cattle	99.4	0	O	ME-SA	Ind-2001	d
viba_43964	SRL/16/2019	cattle	99.4	0	O	ME-SA	Ind-2001	d
viba_43924	SRL/2/2019	cattle	99.2	0	O	ME-SA	Ind-2001	d
viba_43944	SRL/8/2019	cattle	99.2	0	O	ME-SA	Ind-2001	d
viba_43948	SRL/10/2019	cattle	99.2	0	O	ME-SA	Ind-2001	d
viba_35313	SRL/3/2017	cattle	97.9	0	O	ME-SA	Ind-2001	d
viba_36913	SRL/9/2018	cattle	97.6	0	O	ME-SA	Ind-2001	d

#### Most Closely Related Prototype Sequences

see <http://www.wrlfmd.org/fmdv-genome/fmd-prototype-strains>

sequence	virus name	Host	% Id.	# Ambig.	serotype	topotype	lineage	sublineage
viba_293	BHU/3/2009	cattle	93.0	0	O	ME-SA	Ind-2001	d
viba_541	OMN/7/2001	bovine	92.3	0	O	ME-SA	Ind-2001	b
viba_705	KUW/3/97	bovine	92.1	0	O	ME-SA	Ind-2001	a
viba_30238	MUR/19/2016	cattle	91.5	0	O	ME-SA	Ind-2001	e
viba_397	UAE/4/2008	gazelle	90.4	0	O	ME-SA	Ind-2001	c
viba_285	UKG/35/2001	porcine	88.8	0	O	ME-SA	PanAsia	
viba_354	PAK/16/2010	cattle	88.7	0	O	ME-SA	PanAsia-2	PUN-10
viba_860	IRN/6/2015	cattle	88.6	0	O	ME-SA	PanAsia-2	QOM-15
viba_766	IRN/31/2009	cattle	88.4	0	O	ME-SA	PanAsia-2	FAR-09
viba_666	IRN/18/2010	cattle	88.2	0	O	ME-SA	PanAsia-2	BAL-09

Virus sample name:	SRL/8/2019
Sender reference:	SL/FMD/WRL/19/10
Location of origin:	Poojapitiya, Kandy
Country of origin:	Sri Lanka
Date of collection:	21/11/2019
Host species:	cattle
Serotype:	O
Topotype:	ME-SA
Lineage:	Ind-2001
Sublineage:	d
Sequence length:	633
Ambiguities:	0
Material submitted for sequencing:	BTy1
Harvest date of material:	11/01/2020
Primers:	O-1C244F/EUR-2B52R;FMD-3161F/FMD-4303R
Received for sequencing:	28/01/2020
Created:	30/01/2020
Last updated:	30/01/2020

VIBASys IDs: sample 43942, genome 43943, sequence viba\_43944, sequencing info 43945

#### Most Closely Related Sequences

sequence	virus name	Host	% Id.	# Ambig.	serotype	topotype	lineage	sublineage
viba_43948	SRL/10/2019	cattle	100.0	0	O	ME-SA	Ind-2001	d
viba_43956	SRL/13/2019	cattle	99.8	0	O	ME-SA	Ind-2001	d
viba_43936	SRL/6/2019	cattle	99.8	0	O	ME-SA	Ind-2001	d
viba_43924	SRL/2/2019	cattle	99.7	0	O	ME-SA	Ind-2001	d
viba_43968	SRL/17/2019	cattle	99.2	0	O	ME-SA	Ind-2001	d
viba_43940	SRL/7/2019	cattle	99.2	0	O	ME-SA	Ind-2001	d
viba_43952	SRL/12/2019	porcine	99.1	0	O	ME-SA	Ind-2001	d
viba_43964	SRL/16/2019	cattle	98.9	0	O	ME-SA	Ind-2001	d
viba_35313	SRL/3/2017	cattle	97.5	0	O	ME-SA	Ind-2001	d
viba_36913	SRL/9/2018	cattle	96.8	0	O	ME-SA	Ind-2001	d

#### Most Closely Related Prototype Sequences

see <http://www.wrlfmd.org/fmdv-genome/fmd-prototype-strains>

sequence	virus name	Host	% Id.	# Ambig.	serotype	topotype	lineage	sublineage
viba_293	BHU/3/2009	cattle	92.6	0	O	ME-SA	Ind-2001	d
viba_541	OMN/7/2001	bovine	91.9	0	O	ME-SA	Ind-2001	b
viba_705	KUW/3/97	bovine	91.8	0	O	ME-SA	Ind-2001	a
viba_30238	MUR/19/2016	cattle	91.5	0	O	ME-SA	Ind-2001	e
viba_397	UAE/4/2008	gazelle	90.4	0	O	ME-SA	Ind-2001	c
viba_860	IRN/6/2015	cattle	89.1	0	O	ME-SA	PanAsia-2	QOM-15
viba_285	UKG/35/2001	porcine	88.6	0	O	ME-SA	PanAsia	
viba_719	IRN/88/2009		88.5	0	O	ME-SA	PanAsia-2	ANT-10
viba_666	IRN/18/2010	cattle	87.9	0	O	ME-SA	PanAsia-2	BAL-09
viba_766	IRN/31/2009	cattle	87.9	0	O	ME-SA	PanAsia-2	FAR-09

Virus sample name:	SRL/10/2019
Sender reference:	SL/FMD/WRL/19/12
Location of origin:	Thambuttegama, Anuradhapura
Country of origin:	Sri Lanka
Date of collection:	22/11/2019
Host species:	cattle
Serotype:	O
Topotype:	ME-SA
Lineage:	Ind-2001
Sublineage:	d
Sequence length:	633
Ambiguities:	0
Material submitted for sequencing:	BTy1
Harvest date of material:	16/01/2020
Primers:	O-1C244F/EUR-2B52R;FMD-3161F/FMD-4303R
Received for sequencing:	28/01/2020
Created:	30/01/2020
Last updated:	30/01/2020

VIBASys IDs: sample 43946, genome 43947, sequence viba\_43948, sequencing info 43949

### Most Closely Related Sequences

sequence	virus name	Host	% Id.	# Ambig.	serotype	topotype	lineage	sublineage
viba_43944	SRL/8/2019	cattle	100.0	0	O	ME-SA	Ind-2001	d
viba_43956	SRL/13/2019	cattle	99.8	0	O	ME-SA	Ind-2001	d
viba_43936	SRL/6/2019	cattle	99.8	0	O	ME-SA	Ind-2001	d
viba_43924	SRL/2/2019	cattle	99.7	0	O	ME-SA	Ind-2001	d
viba_43968	SRL/17/2019	cattle	99.2	0	O	ME-SA	Ind-2001	d
viba_43940	SRL/7/2019	cattle	99.2	0	O	ME-SA	Ind-2001	d
viba_43952	SRL/12/2019	porcine	99.1	0	O	ME-SA	Ind-2001	d
viba_43964	SRL/16/2019	cattle	98.9	0	O	ME-SA	Ind-2001	d
viba_35313	SRL/3/2017	cattle	97.5	0	O	ME-SA	Ind-2001	d
viba_36913	SRL/9/2018	cattle	96.8	0	O	ME-SA	Ind-2001	d

### Most Closely Related Prototype Sequences

see <http://www.wrlfmd.org/fmdv-genome/fmd-prototype-strains>

sequence	virus name	Host	% Id.	# Ambig.	serotype	topotype	lineage	sublineage
viba_293	BHU/3/2009	cattle	92.6	0	O	ME-SA	Ind-2001	d
viba_541	OMN/7/2001	bovine	91.9	0	O	ME-SA	Ind-2001	b
viba_705	KUW/3/97	bovine	91.8	0	O	ME-SA	Ind-2001	a
viba_30238	MUR/19/2016	cattle	91.5	0	O	ME-SA	Ind-2001	e
viba_397	UAE/4/2008	gazelle	90.4	0	O	ME-SA	Ind-2001	c
viba_860	IRN/6/2015	cattle	89.1	0	O	ME-SA	PanAsia-2	QOM-15
viba_285	UKG/35/2001	porcine	88.6	0	O	ME-SA	PanAsia	
viba_719	IRN/88/2009		88.5	0	O	ME-SA	PanAsia-2	ANT-10
viba_666	IRN/18/2010	cattle	87.9	0	O	ME-SA	PanAsia-2	BAL-09
viba_766	IRN/31/2009	cattle	87.9	0	O	ME-SA	PanAsia-2	FAR-09

Virus sample name:	SRL/12/2019
Sender reference:	SL/FMD/WRL/19/16
Location of origin:	Tambuttegama, Anuradhapura
Country of origin:	Sri Lanka
Date of collection:	22/11/2019
Host species:	porcine
Serotype:	O
Topotype:	ME-SA
Lineage:	Ind-2001
Sublineage:	d
Sequence length:	633
Ambiguities:	0
Material submitted for sequencing:	RS1
Harvest date of material:	13/01/2020
Primers:	O-1C244F/EUR-2B52R;FMD-3161F/FMD-4303R
Received for sequencing:	28/01/2020
Created:	30/01/2020
Last updated:	30/01/2020

VIBASys IDs: sample 43950, genome 43951, sequence viba\_43952, sequencing info 43953

### Most Closely Related Sequences

sequence	virus name	Host	% Id.	# Ambig.	serotype	topotype	lineage	sublineage
viba_43968	SRL/17/2019	cattle	99.5	0	O	ME-SA	Ind-2001	d
viba_43940	SRL/7/2019	cattle	99.5	0	O	ME-SA	Ind-2001	d
viba_43964	SRL/16/2019	cattle	99.5	0	O	ME-SA	Ind-2001	d
viba_43956	SRL/13/2019	cattle	99.2	0	O	ME-SA	Ind-2001	d
viba_43936	SRL/6/2019	cattle	99.2	0	O	ME-SA	Ind-2001	d
viba_43924	SRL/2/2019	cattle	99.1	0	O	ME-SA	Ind-2001	d
viba_43944	SRL/8/2019	cattle	99.1	0	O	ME-SA	Ind-2001	d
viba_43948	SRL/10/2019	cattle	99.1	0	O	ME-SA	Ind-2001	d
viba_35313	SRL/3/2017	cattle	97.8	0	O	ME-SA	Ind-2001	d
viba_36913	SRL/9/2018	cattle	97.2	0	O	ME-SA	Ind-2001	d

### Most Closely Related Prototype Sequences

see <http://www.wrlfmd.org/fmdv-genome/fmd-prototype-strains>

sequence	virus name	Host	% Id.	# Ambig.	serotype	topotype	lineage	sublineage
viba_293	BHU/3/2009	cattle	92.9	0	O	ME-SA	Ind-2001	d
viba_541	OMN/7/2001	bovine	91.8	0	O	ME-SA	Ind-2001	b
viba_705	KUW/3/97	bovine	91.6	0	O	ME-SA	Ind-2001	a
viba_30238	MUR/19/2016	cattle	91.4	0	O	ME-SA	Ind-2001	e
viba_397	UAE/4/2008	gazelle	90.2	0	O	ME-SA	Ind-2001	c
viba_285	UKG/35/2001	porcine	88.5	0	O	ME-SA	PanAsia	
viba_354	PAK/16/2010	cattle	88.4	0	O	ME-SA	PanAsia-2	PUN-10
viba_860	IRN/6/2015	cattle	88.2	0	O	ME-SA	PanAsia-2	QOM-15
viba_766	IRN/31/2009	cattle	88.1	0	O	ME-SA	PanAsia-2	FAR-09
viba_666	IRN/18/2010	cattle	87.9	0	O	ME-SA	PanAsia-2	BAL-09

Virus sample name:	SRL/13/2019
Sender reference:	SL/FMD/WRL/19/14
Location of origin:	Panduwasnuwara, Kurunegala
Country of origin:	Sri Lanka
Date of collection:	24/11/2019
Host species:	cattle
Serotype:	O
Topotype:	ME-SA
Lineage:	Ind-2001
Sublineage:	d
Sequence length:	633
Ambiguities:	0
Material submitted for sequencing:	BTy1
Harvest date of material:	16/01/2020
Primers:	O-1C244F/EUR-2B52R;FMD-3161F/FMD-4303R
Received for sequencing:	28/01/2020
Created:	30/01/2020
Last updated:	30/01/2020
VIBASys IDs: sample 43954, genome 43955, sequence viba_43956, sequencing info 43957	

### Most Closely Related Sequences

sequence	virus name	Host	% Id.	# Ambig.	serotype	topotype	lineage	sublineage
viba_43936	SRL/6/2019	cattle	100.0	0	O	ME-SA	Ind-2001	d
viba_43924	SRL/2/2019	cattle	99.8	0	O	ME-SA	Ind-2001	d
viba_43944	SRL/8/2019	cattle	99.8	0	O	ME-SA	Ind-2001	d
viba_43948	SRL/10/2019	cattle	99.8	0	O	ME-SA	Ind-2001	d
viba_43968	SRL/17/2019	cattle	99.4	0	O	ME-SA	Ind-2001	d
viba_43940	SRL/7/2019	cattle	99.4	0	O	ME-SA	Ind-2001	d
viba_43952	SRL/12/2019	porcine	99.2	0	O	ME-SA	Ind-2001	d
viba_43964	SRL/16/2019	cattle	99.1	0	O	ME-SA	Ind-2001	d
viba_35313	SRL/3/2017	cattle	97.6	0	O	ME-SA	Ind-2001	d
viba_36913	SRL/9/2018	cattle	97.0	0	O	ME-SA	Ind-2001	d

### Most Closely Related Prototype Sequences

see <http://www.wrlfmd.org/fmdv-genome/fmd-prototype-strains>

sequence	virus name	Host	% Id.	# Ambig.	serotype	topotype	lineage	sublineage
viba_293	BHU/3/2009	cattle	92.7	0	O	ME-SA	Ind-2001	d
viba_541	OMN/7/2001	bovine	91.8	0	O	ME-SA	Ind-2001	b
viba_705	KUW/3/97	bovine	91.6	0	O	ME-SA	Ind-2001	a
viba_30238	MUR/19/2016	cattle	91.4	0	O	ME-SA	Ind-2001	e
viba_397	UAE/4/2008	gazelle	90.2	0	O	ME-SA	Ind-2001	c
viba_860	IRN/6/2015	cattle	88.9	0	O	ME-SA	PanAsia-2	QOM-15
viba_285	UKG/35/2001	porcine	88.5	0	O	ME-SA	PanAsia	
viba_719	IRN/88/2009		88.3	0	O	ME-SA	PanAsia-2	ANT-10
viba_666	IRN/18/2010	cattle	87.8	0	O	ME-SA	PanAsia-2	BAL-09
viba_766	IRN/31/2009	cattle	87.8	0	O	ME-SA	PanAsia-2	FAR-09

Virus sample name:	SRL/14/2019
Sender reference:	SL/FMD/WRL/19/15
Location of origin:	Tambuttegama, Anuradhapura
Country of origin:	Sri Lanka
Date of collection:	26/11/2019
Host species:	cattle
Serotype:	O
Topotype:	ME-SA
Lineage:	
Sublineage:	
Sequence length:	633
Ambiguities:	0
Material submitted for sequencing:	BTy1
Harvest date of material:	16/01/2020
Primers:	O-1C244F/EUR-2B52R;FMD-3161F/FMD-4303R
Received for sequencing:	28/01/2020
Created:	30/01/2020
Last updated:	30/01/2020

VIBASys IDs: sample 43958, genome 43959, sequence viba\_43960, sequencing info 43961

#### Most Closely Related Sequences

sequence	virus name	Host	% Id.	# Ambig.	serotype	topotype	lineage	sublineage
viba_43916	SRL/17/2018	cattle	98.9	0	O	ME-SA		
viba_43912	SRL/16/2018	cattle	98.7	0	O	ME-SA		
viba_14662	IND/32/2010	cattle	92.3	0	O	ME-SA		
viba_31258	IND/23/2012	cattle	91.8	0	O	ME-SA		
viba_33005	IND/172/2011	cattle	91.6	0	O	ME-SA		
viba_32917	IND/56/2011	cattle	91.5	0	O	ME-SA		
viba_31078	BD BAU ML2 2013	cattle	91.3	0	O	ME-SA		
viba_32901	IND/35/2011	cattle	91.3	0	O	ME-SA		
viba_31062	BD SI 5 2013	cattle	91.3	0	O	ME-SA		
viba_31074	BD BAU ML1 2013	cattle	91.2	0	O	ME-SA		

#### Most Closely Related Prototype Sequences

see <http://www.wrlfmd.org/fmdv-genome/fmd-prototype-strains>

sequence	virus name	Host	% Id.	# Ambig.	serotype	topotype	lineage	sublineage
viba_766	IRN/31/2009	cattle	90.2	0	O	ME-SA	PanAsia-2	FAR-09
viba_719	IRN/88/2009		90.0	0	O	ME-SA	PanAsia-2	ANT-10
viba_666	IRN/18/2010	cattle	89.9	0	O	ME-SA	PanAsia-2	BAL-09
viba_505	TUR/264/2009		89.9	0	O	ME-SA	PanAsia-2	SAN-09
viba_705	KUW/3/97	bovine	89.7	0	O	ME-SA	Ind-2001	a
viba_860	IRN/6/2015	cattle	89.6	0	O	ME-SA	PanAsia-2	QOM-15
viba_650	IRN/8/2005	ovine	89.4	0	O	ME-SA	PanAsia-2	
viba_491	TUR/257/2008		89.3	0	O	ME-SA	PanAsia-2	TER-08
viba_354	PAK/16/2010	cattle	89.3	0	O	ME-SA	PanAsia-2	PUN-10
viba_285	UKG/35/2001	porcine	89.1	0	O	ME-SA	PanAsia	

Virus sample name:	SRL/16/2019
Sender reference:	SL/FMD/WRL/19/18
Location of origin:	Nochchiyagama, Anuradhapura
Country of origin:	Sri Lanka
Date of collection:	16/12/2019
Host species:	cattle
Serotype:	O
Topotype:	ME-SA
Lineage:	Ind-2001
Sublineage:	d
Sequence length:	633
Ambiguities:	0
Material submitted for sequencing:	BTy1
Harvest date of material:	17/01/2020
Primers:	O-1C244F/EUR-2B52R;FMD-3161F/FMD-4303R
Received for sequencing:	28/01/2020
Created:	30/01/2020
Last updated:	30/01/2020

VIBASys IDs: sample 43962, genome 43963, sequence viba\_43964, sequencing info 43965

### Most Closely Related Sequences

sequence	virus name	Host	% Id.	# Ambig.	serotype	topotype	lineage	sublineage
viba_43952	SRL/12/2019	porcine	99.5	0	O	ME-SA	Ind-2001	d
viba_43968	SRL/17/2019	cattle	99.4	0	O	ME-SA	Ind-2001	d
viba_43940	SRL/7/2019	cattle	99.4	0	O	ME-SA	Ind-2001	d
viba_43956	SRL/13/2019	cattle	99.1	0	O	ME-SA	Ind-2001	d
viba_43936	SRL/6/2019	cattle	99.1	0	O	ME-SA	Ind-2001	d
viba_43924	SRL/2/2019	cattle	98.9	0	O	ME-SA	Ind-2001	d
viba_43944	SRL/8/2019	cattle	98.9	0	O	ME-SA	Ind-2001	d
viba_43948	SRL/10/2019	cattle	98.9	0	O	ME-SA	Ind-2001	d
viba_35313	SRL/3/2017	cattle	97.6	0	O	ME-SA	Ind-2001	d
viba_36913	SRL/9/2018	cattle	97.0	0	O	ME-SA	Ind-2001	d

### Most Closely Related Prototype Sequences

see <http://www.wrlfmd.org/fmdv-genome/fmd-prototype-strains>

sequence	virus name	Host	% Id.	# Ambig.	serotype	topotype	lineage	sublineage
viba_293	BHU/3/2009	cattle	92.7	0	O	ME-SA	Ind-2001	d
viba_541	OMN/7/2001	bovine	91.9	0	O	ME-SA	Ind-2001	b
viba_705	KUW/3/97	bovine	91.8	0	O	ME-SA	Ind-2001	a
viba_30238	MUR/19/2016	cattle	91.5	0	O	ME-SA	Ind-2001	e
viba_397	UAE/4/2008	gazelle	90.4	0	O	ME-SA	Ind-2001	c
viba_285	UKG/35/2001	porcine	88.6	0	O	ME-SA	PanAsia	
viba_354	PAK/16/2010	cattle	88.5	0	O	ME-SA	PanAsia-2	PUN-10
viba_860	IRN/6/2015	cattle	88.4	0	O	ME-SA	PanAsia-2	QOM-15
viba_766	IRN/31/2009	cattle	88.2	0	O	ME-SA	PanAsia-2	FAR-09
viba_666	IRN/18/2010	cattle	88.1	0	O	ME-SA	PanAsia-2	BAL-09

Virus sample name:	SRL/17/2019
Sender reference:	SL/FMD/WRL/19/19
Location of origin:	Welisara, Gampaha
Country of origin:	Sri Lanka
Date of collection:	17/12/2019
Host species:	cattle
Serotype:	O
Topotype:	ME-SA
Lineage:	Ind-2001
Sublineage:	d
Sequence length:	633
Ambiguities:	0
Material submitted for sequencing:	BTy1
Harvest date of material:	16/01/2020
Primers:	O-1C244F/EUR-2B52R;FMD-3161F/FMD-4303R
Received for sequencing:	28/01/2020
Created:	30/01/2020
Last updated:	30/01/2020
VIBASys IDs: sample 43966, genome 43967, sequence viba_43968, sequencing info 43969	

#### Most Closely Related Sequences

sequence	virus name	Host	% Id.	# Ambig.	serotype	topotype	lineage	sublineage
viba_43940	SRL/7/2019	cattle	100.0	0	O	ME-SA	Ind-2001	d
viba_43952	SRL/12/2019	porcine	99.5	0	O	ME-SA	Ind-2001	d
viba_43956	SRL/13/2019	cattle	99.4	0	O	ME-SA	Ind-2001	d
viba_43936	SRL/6/2019	cattle	99.4	0	O	ME-SA	Ind-2001	d
viba_43964	SRL/16/2019	cattle	99.4	0	O	ME-SA	Ind-2001	d
viba_43924	SRL/2/2019	cattle	99.2	0	O	ME-SA	Ind-2001	d
viba_43944	SRL/8/2019	cattle	99.2	0	O	ME-SA	Ind-2001	d
viba_43948	SRL/10/2019	cattle	99.2	0	O	ME-SA	Ind-2001	d
viba_35313	SRL/3/2017	cattle	97.9	0	O	ME-SA	Ind-2001	d
viba_36913	SRL/9/2018	cattle	97.6	0	O	ME-SA	Ind-2001	d

#### Most Closely Related Prototype Sequences

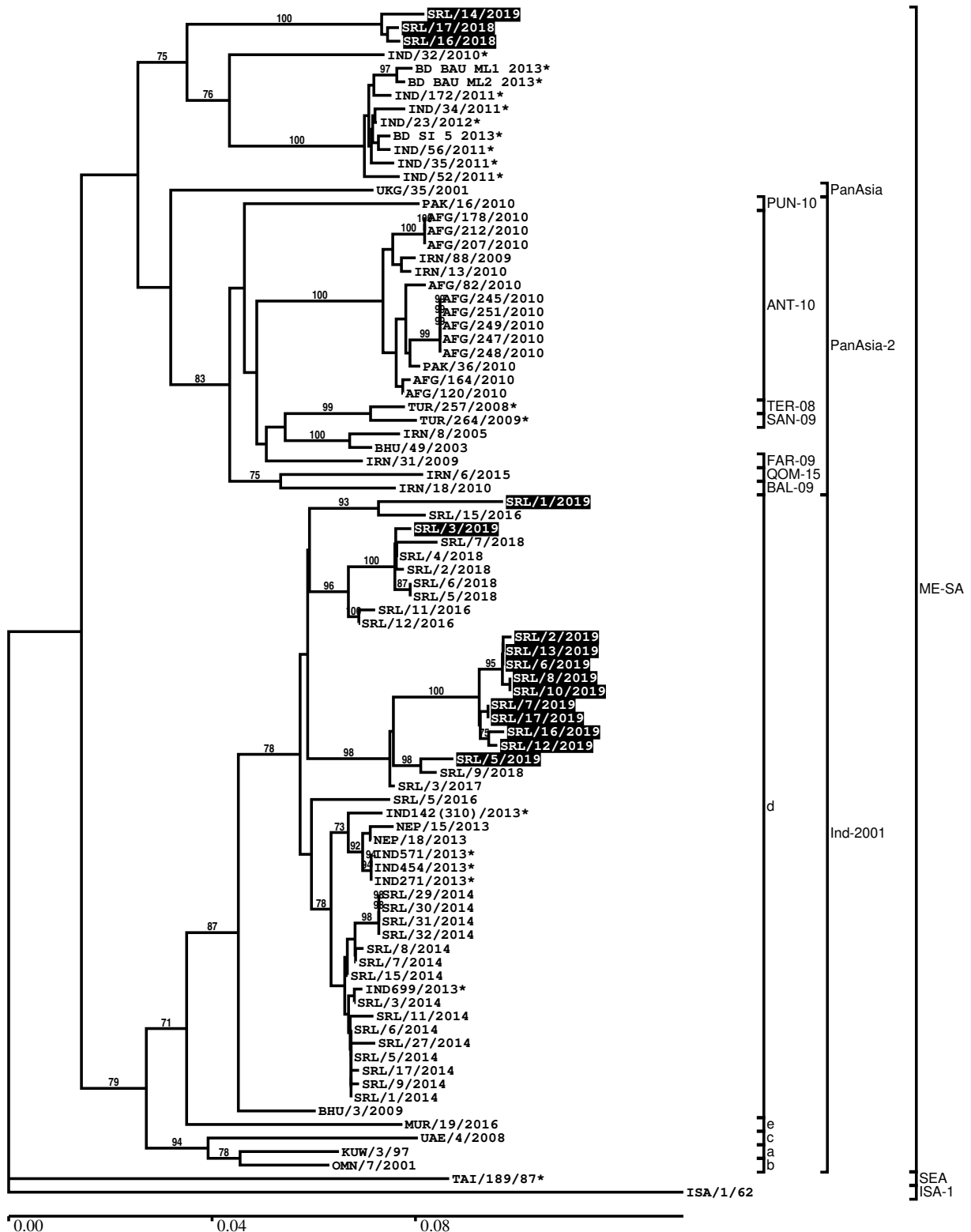
see <http://www.wrlfmd.org/fmdv-genome/fmd-prototype-strains>

sequence	virus name	Host	% Id.	# Ambig.	serotype	topotype	lineage	sublineage
viba_293	BHU/3/2009	cattle	93.0	0	O	ME-SA	Ind-2001	d
viba_541	OMN/7/2001	bovine	92.3	0	O	ME-SA	Ind-2001	b
viba_705	KUW/3/97	bovine	92.1	0	O	ME-SA	Ind-2001	a
viba_30238	MUR/19/2016	cattle	91.5	0	O	ME-SA	Ind-2001	e
viba_397	UAE/4/2008	gazelle	90.4	0	O	ME-SA	Ind-2001	c
viba_285	UKG/35/2001	porcine	88.8	0	O	ME-SA	PanAsia	
viba_354	PAK/16/2010	cattle	88.7	0	O	ME-SA	PanAsia-2	PUN-10
viba_860	IRN/6/2015	cattle	88.6	0	O	ME-SA	PanAsia-2	QOM-15
viba_766	IRN/31/2009	cattle	88.4	0	O	ME-SA	PanAsia-2	FAR-09
viba_666	IRN/18/2010	cattle	88.2	0	O	ME-SA	PanAsia-2	BAL-09



Report on FMDV O in Sri Lanka in 2018, 2019

Batch: WRLFMD/2020/00001



\*, not a WRLFMD Reference Number

## Analysis Parameters

VP1 subsequence extractor:	vp1_O
Query sequence set:	WRLFMD/2020/00001-Sri Lanka-O (15 sequences)
Sequence database set:	allseqs_O (4709 sequences)
Prototype sequence set:	!prototypes_O (49 sequences)
Number of related sequences reported:	10
Minimal VP1 subsequence match length	600
Sequence alignment method:	muscle (default parameters)
Sequence alignment length:	636
Phylogeny reconstruction method:	fdnadist, fneighbor
Number of bootstrap samples:	1000
Random seed for bootstrapping:	1
Displaying bootstrap values above:	70.0%
Number of sequences in tree capped at:	100
Number of prototype sequences in tree:	14
VIBASys version:	reflabs-1.1.2

## Sequences in the Phylogenetic Tree

All sequences in the tree are in taxonomic group FMDV/O

label	accession	host(s)	lab	country	taxonomic information
SRL/14/2019	n/a	cattle	WRLFMD	Sri Lanka	ME-SA
SRL/17/2018	n/a	cattle	WRLFMD	Sri Lanka	ME-SA
SRL/16/2018	n/a	cattle	WRLFMD	Sri Lanka	ME-SA
IND/32/2010*	KC506435	cattle	PD-FMD	India	ME-SA
BD BAU ML1 2013*	KT960948	cattle	Bangladesh Agri Univ	Bangladesh	ME-SA
BD BAU ML2 2013*	KT982203	cattle	Bangladesh Agri Univ	Bangladesh	ME-SA
IND/172/2011*	KC506438	cattle	PD-FMD	India	ME-SA
IND/34/2011*	KC506440	cattle	PD-FMD	India	ME-SA
IND/23/2012*	KC506439	cattle	PD-FMD	India	ME-SA
BD SI 5 2013*	KT037118	cattle	Bangladesh Agri Univ	Bangladesh	ME-SA
IND/56/2011*	KC506443	cattle	PD-FMD	India	ME-SA
IND/35/2011*	KC506441	cattle	PD-FMD	India	ME-SA
IND/52/2011*	KC506442	water buffalo	PD-FMD	India	ME-SA
UKG/35/2001	AJ539141	porcine	PIADC	United Kingdom	ME-SA/PanAsia
PAK/16/2010	KY091285	cattle	WRLFMD	Pakistan	ME-SA/PanAsia-2/PUN-10
AFG/178/2010	n/a	cattle	WRLFMD	Afghanistan	ME-SA/PanAsia-2/ANT-10
AFG/212/2010	n/a	cattle	WRLFMD	Afghanistan	ME-SA/PanAsia-2/ANT-10
AFG/207/2010	n/a	cattle	WRLFMD	Afghanistan	ME-SA/PanAsia-2/ANT-10
IRN/88/2009	KY091282	n/a	WRLFMD	Iran	ME-SA/PanAsia-2/ANT-10
IRN/13/2010	n/a	n/a	WRLFMD	Iran	ME-SA/PanAsia-2/ANT-10
AFG/82/2010	n/a	n/a	WRLFMD	Afghanistan	ME-SA/PanAsia-2/ANT-10
AFG/245/2010	n/a	cattle	WRLFMD	Afghanistan	ME-SA/PanAsia-2/ANT-10
AFG/251/2010	n/a	cattle	WRLFMD	Afghanistan	ME-SA/PanAsia-2/ANT-10
AFG/249/2010	n/a	cattle	WRLFMD	Afghanistan	ME-SA/PanAsia-2/ANT-10
AFG/247/2010	n/a	cattle	WRLFMD	Afghanistan	ME-SA/PanAsia-2/ANT-10
AFG/248/2010	n/a	cattle	WRLFMD	Afghanistan	ME-SA/PanAsia-2/ANT-10
PAK/36/2010	n/a	cattle	WRLFMD	Pakistan	ME-SA/PanAsia-2/ANT-10
AFG/164/2010	n/a	cattle	WRLFMD	Afghanistan	ME-SA/PanAsia-2/ANT-10
AFG/120/2010	n/a	cattle	WRLFMD	Afghanistan	ME-SA/PanAsia-2/ANT-10
TUR/257/2008*	n/a	n/a	FMDI-Ankara	Turkey	ME-SA/PanAsia-2/TER-08
TUR/264/2009*	n/a	n/a	FMDI-Ankara	Turkey	ME-SA/PanAsia-2/SAN-09
IRN/8/2005	KY091281	ovine	WRLFMD	Iran	ME-SA/PanAsia-2
BHU/49/2003	DQ164867	bovine	WRLFMD	Bhutan	ME-SA/PanAsia-2

*continued on next page*

label	accession	host(s)	lab	country	taxonomic information
IRN/31/2009	KY091284	cattle	WRLFMD	Iran	ME-SA/PanAsia-2/FAR-09
IRN/6/2015	MN276044	cattle	WRLFMD	Iran	ME-SA/PanAsia-2/QOM-15
IRN/18/2010	KY091283	cattle	WRLFMD	Iran	ME-SA/PanAsia-2/BAL-09
SRL/1/2019	n/a	cattle	WRLFMD	Sri Lanka	ME-SA/Ind-2001/d
SRL/15/2016	n/a	cattle	WRLFMD	Sri Lanka	ME-SA/Ind-2001/d
SRL/3/2019	n/a	cattle	WRLFMD	Sri Lanka	ME-SA/Ind-2001/d
SRL/7/2018	n/a	cattle	WRLFMD	Sri Lanka	ME-SA/Ind-2001/d
SRL/4/2018	n/a	cattle	WRLFMD	Sri Lanka	ME-SA/Ind-2001/d
SRL/2/2018	n/a	cattle	WRLFMD	Sri Lanka	ME-SA/Ind-2001/d
SRL/6/2018	n/a	cattle	WRLFMD	Sri Lanka	ME-SA/Ind-2001/d
SRL/5/2018	n/a	cattle	WRLFMD	Sri Lanka	ME-SA/Ind-2001/d
SRL/11/2016	n/a	cattle	WRLFMD	Sri Lanka	ME-SA/Ind-2001/d
SRL/12/2016	n/a	cattle	WRLFMD	Sri Lanka	ME-SA/Ind-2001/d
SRL/2/2019	n/a	cattle	WRLFMD	Sri Lanka	ME-SA/Ind-2001/d
SRL/13/2019	n/a	cattle	WRLFMD	Sri Lanka	ME-SA/Ind-2001/d
SRL/6/2019	n/a	cattle	WRLFMD	Sri Lanka	ME-SA/Ind-2001/d
SRL/8/2019	n/a	cattle	WRLFMD	Sri Lanka	ME-SA/Ind-2001/d
SRL/10/2019	n/a	cattle	WRLFMD	Sri Lanka	ME-SA/Ind-2001/d
SRL/7/2019	n/a	cattle	WRLFMD	Sri Lanka	ME-SA/Ind-2001/d
SRL/17/2019	n/a	cattle	WRLFMD	Sri Lanka	ME-SA/Ind-2001/d
SRL/16/2019	n/a	cattle	WRLFMD	Sri Lanka	ME-SA/Ind-2001/d
SRL/12/2019	n/a	porcine	WRLFMD	Sri Lanka	ME-SA/Ind-2001/d
SRL/5/2019	n/a	cattle	WRLFMD	Sri Lanka	ME-SA/Ind-2001/d
SRL/9/2018	n/a	cattle	WRLFMD	Sri Lanka	ME-SA/Ind-2001/d
SRL/3/2017	n/a	cattle	WRLFMD	Sri Lanka	ME-SA/Ind-2001/d
SRL/5/2016	n/a	cattle	WRLFMD	Sri Lanka	ME-SA/Ind-2001/d
IND142(310)/2013*	KJ825801	cattle	PD-FMD	India	ME-SA/Ind-2001/d
NEP/15/2013	KM921857	cattle	WRLFMD	Nepal	ME-SA/Ind-2001/d
NEP/18/2013	KM921860	porcine	WRLFMD	Nepal	ME-SA/Ind-2001/d
IND571/2013*	KX228160	cattle	PD-FMD	India	ME-SA/Ind-2001/d
IND454/2013*	KX228159	cattle	PD-FMD	India	ME-SA/Ind-2001/d
IND271/2013*	KX228161	cattle	PD-FMD	India	ME-SA/Ind-2001/d
SRL/29/2014	MF947488	water buffalo	WRLFMD	Sri Lanka	ME-SA/Ind-2001/d
SRL/30/2014	MF947489	water buffalo	WRLFMD	Sri Lanka	ME-SA/Ind-2001/d
SRL/31/2014	MF947490	water buffalo	WRLFMD	Sri Lanka	ME-SA/Ind-2001/d
SRL/32/2014	MF947491	water buffalo	WRLFMD	Sri Lanka	ME-SA/Ind-2001/d
SRL/8/2014	MF947480	bovine	WRLFMD	Sri Lanka	ME-SA/Ind-2001/d
SRL/7/2014	MF947479	bovine	WRLFMD	Sri Lanka	ME-SA/Ind-2001/d
SRL/15/2014	MF947483	bovine	WRLFMD	Sri Lanka	ME-SA/Ind-2001/d
IND699/2013*	KP835578	Indian elephant	PD-FMD	India	ME-SA/Ind-2001/d
SRL/3/2014	MF947476	bovine	WRLFMD	Sri Lanka	ME-SA/Ind-2001/d
SRL/11/2014	MF947482	porcine	WRLFMD	Sri Lanka	ME-SA/Ind-2001/d
SRL/6/2014	MF947478	bovine	WRLFMD	Sri Lanka	ME-SA/Ind-2001/d
SRL/27/2014	MF947486	bovine	WRLFMD	Sri Lanka	ME-SA/Ind-2001/d
SRL/5/2014	MF947477	bovine	WRLFMD	Sri Lanka	ME-SA/Ind-2001/d
SRL/17/2014	MF947485	bovine	WRLFMD	Sri Lanka	ME-SA/Ind-2001/d
SRL/9/2014	MF947481	bovine	WRLFMD	Sri Lanka	ME-SA/Ind-2001/d
SRL/1/2014	MF947474	bovine	WRLFMD	Sri Lanka	ME-SA/Ind-2001/d
BHU/3/2009	KM921814	cattle	WRLFMD	Bhutan	ME-SA/Ind-2001/d
MUR/19/2016	MG972510	cattle	WRLFMD	Mauritius	ME-SA/Ind-2001/e
UAE/4/2008	KM921876	gazelle	WRLFMD	United Arab Emirates	ME-SA/Ind-2001/c
KUW/3/97	DQ164904	bovine	WRLFMD	Kuwait	ME-SA/Ind-2001/a
OMN/7/2001	DQ164941	bovine	WRLFMD	Oman	ME-SA/Ind-2001/b
TAI/189/87*	KY091288	bovine	TRRL	Thailand	SEA
ISA/1/62	AJ303500	n/a	WRLFMD	Indonesia	ISA-1

\*, not a WRLFMD Reference Number

n/a, not available