



## FMD Genotyping Report

Lab Reference WRL batch Number: WRLFMD/2021/00017

Sender Details:



Date Received: 20/12/2021

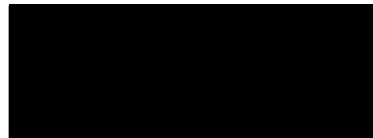
Country of Origin\*: JORDAN

Sequencing work has now been completed in respect of the samples you submitted and the details are as attached. Please note that all of our phylogenetic trees can be accessed via the internet at:  
<http://www.wrlfmd.org/>

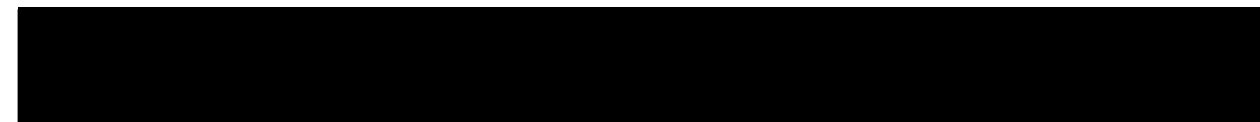
Results Approved By:



Official Stamp:



Date: 24/1/2022



To help us improve the quality of our service, please send any suggestions or requests to the Reference Laboratory by email ([reflabsfeedback@pirbright.ac.uk](mailto:reflabsfeedback@pirbright.ac.uk)).

\* Data supplied by the customer

Batch: IAHB/2021/01308

# FAO World Reference Laboratory for Foot-and-Mouth Disease (WRLFMD)

## Genotyping Report

FMDV serotype: O  
Country: Jordan  
Year: 2017, 2021  
Batch: WRLFMD/2021/00017  
No. of sequences: 7  
Report date: 21st January 2022  
Report generated by: Nick Knowles  
Report checked by: Jemma Wadsworth



Copyright © 2022 The Pirbright Institute, Ash Road, Pirbright, Woking GU24 0NF, United Kingdom.

www: <http://www.wrlfmd.org/>

email: [reporting@pirbright.ac.uk](mailto:reporting@pirbright.ac.uk)

The contents of this report should not be reproduced without permission.

Virus sample name:	JOR/1/2017
Sender reference:	v72/2017
Location of origin:	Tafilah, Tafilah Governorate
Country of origin:	Jordan
Date of collection:	15/02/2017
Host species:	cattle
Serotype:	O
Topotype:	ME-SA
Lineage:	Ind-2001
Sublineage:	e
Sequence length:	633
Ambiguities:	0
Material submitted for sequencing:	WRL-LFBK1
Harvest date of material:	12/01/2022
Primers:	O-1C244F/EUR-2B52R; FMD-3161F/FMD-4303R
Received for sequencing:	19/01/2022
Created:	21/01/2022
Last updated:	21/01/2022

VIBASys IDs: sample 49992, genome 49993, sequence viba\_49994, sequencing info 49995

### Most Closely Related Sequences

sequence	virus name	Host	% Id.	# Ambig.	serotype	topotype	lineage	sublineage
viba_50002	JOR/3/2017	sheep	100.0	0	O	ME-SA	Ind-2001	e
viba_35914	JOR/1/2017/JUST	sheep	100.0	0	O	ME-SA	Ind-2001	e
viba_49998	JOR/2/2017	sheep	99.8	0	O	ME-SA	Ind-2001	e
viba_23824	SAU/10/2016	bovine	99.2	0	O	ME-SA	Ind-2001	e
viba_25914	UAE/1/2015	gazelle	99.2	0	O	ME-SA	Ind-2001	e
viba_46423	IND/PD275/2015	cattle	99.2	0	O	ME-SA	Ind-2001	e
viba_26244	SAU/19/2015	bovine	99.1	0	O	ME-SA	Ind-2001	e
viba_26252	SAU/22/2015	bovine	99.1	0	O	ME-SA	Ind-2001	e
viba_26240	SAU/18/2015	bovine	99.1	0	O	ME-SA	Ind-2001	e
viba_26248	SAU/20/2015	bovine	99.1	0	O	ME-SA	Ind-2001	e

### Most Closely Related Prototype Sequences

see <http://www.wrlfmd.org/fmdv-genome/fmd-prototype-strains>

sequence	virus name	Host	% Id.	# Ambig.	serotype	topotype	lineage	sublineage
viba_30238	MUR/19/2016	cattle	98.1	0	O	ME-SA	Ind-2001	e
viba_293	BHU/3/2009	cattle	94.0	0	O	ME-SA	Ind-2001	d
viba_541	OMN/7/2001	bovine	92.3	0	O	ME-SA	Ind-2001	b
viba_705	KUW/3/97	bovine	91.0	0	O	ME-SA	Ind-2001	a
viba_397	UAE/4/2008	gazelle	89.8	0	O	ME-SA	Ind-2001	c
viba_285	UKG/35/2001	porcine	88.7	0	O	ME-SA	PanAsia	
viba_766	IRN/31/2009	cattle	88.5	0	O	ME-SA	PanAsia-2	FAR-09
viba_359	Manisa/TUR/69		88.0	0	O	ME-SA		
viba_719	IRN/88/2009		88.0	0	O	ME-SA	PanAsia-2	ANT-10
viba_576	IND/R2/75		87.2	0	O	ME-SA		

Virus sample name:	JOR/2/2017
Sender reference:	v108/2017
Location of origin:	Deir Alla, Balqa Governorate
Country of origin:	Jordan
Date of collection:	28/02/2017
Host species:	sheep
Serotype:	O
Topotype:	ME-SA
Lineage:	Ind-2001
Sublineage:	e
Sequence length:	633
Ambiguities:	0
Material submitted for sequencing:	WRL-LFBK1
Harvest date of material:	12/01/2022
Primers:	O-1C244F/EUR-2B52R; FMD-3161F/FMD-4303R
Received for sequencing:	19/01/2022
Created:	21/01/2022
Last updated:	21/01/2022

VIBASys IDs: sample 49996, genome 49997, sequence viba\_49998, sequencing info 49999

### Most Closely Related Sequences

sequence	virus name	Host	% Id.	# Ambig.	serotype	topotype	lineage	sublineage
viba_49994	JOR/1/2017	cattle	99.8	0	O	ME-SA	Ind-2001	e
viba_50002	JOR/3/2017	sheep	99.8	0	O	ME-SA	Ind-2001	e
viba_35914	JOR/1/2017/JUST	sheep	99.8	0	O	ME-SA	Ind-2001	e
viba_23824	SAU/10/2016	bovine	99.1	0	O	ME-SA	Ind-2001	e
viba_25914	UAE/1/2015	gazelle	99.1	0	O	ME-SA	Ind-2001	e
viba_46423	IND/PD275/2015	cattle	99.1	0	O	ME-SA	Ind-2001	e
viba_26244	SAU/19/2015	bovine	98.9	0	O	ME-SA	Ind-2001	e
viba_26252	SAU/22/2015	bovine	98.9	0	O	ME-SA	Ind-2001	e
viba_26240	SAU/18/2015	bovine	98.9	0	O	ME-SA	Ind-2001	e
viba_26248	SAU/20/2015	bovine	98.9	0	O	ME-SA	Ind-2001	e

### Most Closely Related Prototype Sequences

see <http://www.wrlfmd.org/fmdv-genome/fmd-prototype-strains>

sequence	virus name	Host	% Id.	# Ambig.	serotype	topotype	lineage	sublineage
viba_30238	MUR/19/2016	cattle	97.9	0	O	ME-SA	Ind-2001	e
viba_293	BHU/3/2009	cattle	93.8	0	O	ME-SA	Ind-2001	d
viba_541	OMN/7/2001	bovine	92.1	0	O	ME-SA	Ind-2001	b
viba_705	KUW/3/97	bovine	90.9	0	O	ME-SA	Ind-2001	a
viba_397	UAE/4/2008	gazelle	89.6	0	O	ME-SA	Ind-2001	c
viba_285	UKG/35/2001	porcine	88.5	0	O	ME-SA	PanAsia	
viba_766	IRN/31/2009	cattle	88.3	0	O	ME-SA	PanAsia-2	FAR-09
viba_719	IRN/88/2009		87.9	0	O	ME-SA	PanAsia-2	ANT-10
viba_359	Manisa/TUR/69		87.8	0	O	ME-SA		
viba_576	IND/R2/75		87.4	0	O	ME-SA		

Virus sample name:	JOR/3/2017
Sender reference:	v116/2017
Location of origin:	Jerash, Jerash Governorate
Country of origin:	Jordan
Date of collection:	05/03/2017
Host species:	sheep
Serotype:	O
Topotype:	ME-SA
Lineage:	Ind-2001
Sublineage:	e
Sequence length:	633
Ambiguities:	0
Material submitted for sequencing:	WRL-LFBK1
Harvest date of material:	12/01/2022
Primers:	O-1C244F/EUR-2B52R; FMD-3161F/FMD-4303R
Received for sequencing:	19/01/2022
Created:	21/01/2022
Last updated:	21/01/2022

VIBASys IDs: sample 50000, genome 50001, sequence viba\_50002, sequencing info 50003

#### Most Closely Related Sequences

sequence	virus name	Host	% Id.	# Ambig.	serotype	topotype	lineage	sublineage
viba_49994	JOR/1/2017	cattle	100.0	0	O	ME-SA	Ind-2001	e
viba_35914	JOR/1/2017/JUST	sheep	100.0	0	O	ME-SA	Ind-2001	e
viba_49998	JOR/2/2017	sheep	99.8	0	O	ME-SA	Ind-2001	e
viba_23824	SAU/10/2016	bovine	99.2	0	O	ME-SA	Ind-2001	e
viba_25914	UAE/1/2015	gazelle	99.2	0	O	ME-SA	Ind-2001	e
viba_46423	IND/PD275/2015	cattle	99.2	0	O	ME-SA	Ind-2001	e
viba_26244	SAU/19/2015	bovine	99.1	0	O	ME-SA	Ind-2001	e
viba_26252	SAU/22/2015	bovine	99.1	0	O	ME-SA	Ind-2001	e
viba_26240	SAU/18/2015	bovine	99.1	0	O	ME-SA	Ind-2001	e
viba_26248	SAU/20/2015	bovine	99.1	0	O	ME-SA	Ind-2001	e

#### Most Closely Related Prototype Sequences

see <http://www.wrlfmd.org/fmdv-genome/fmd-prototype-strains>

sequence	virus name	Host	% Id.	# Ambig.	serotype	topotype	lineage	sublineage
viba_30238	MUR/19/2016	cattle	98.1	0	O	ME-SA	Ind-2001	e
viba_293	BHU/3/2009	cattle	94.0	0	O	ME-SA	Ind-2001	d
viba_541	OMN/7/2001	bovine	92.3	0	O	ME-SA	Ind-2001	b
viba_705	KUW/3/97	bovine	91.0	0	O	ME-SA	Ind-2001	a
viba_397	UAE/4/2008	gazelle	89.8	0	O	ME-SA	Ind-2001	c
viba_285	UKG/35/2001	porcine	88.7	0	O	ME-SA	PanAsia	
viba_766	IRN/31/2009	cattle	88.5	0	O	ME-SA	PanAsia-2	FAR-09
viba_359	Manisa/TUR/69		88.0	0	O	ME-SA		
viba_719	IRN/88/2009		88.0	0	O	ME-SA	PanAsia-2	ANT-10
viba_576	IND/R2/75		87.2	0	O	ME-SA		

Virus sample name:	JOR/1/2021
Sender reference:	v486/2021
Location of origin:	al Madhouna, Sahab, Amman Governorate
Country of origin:	Jordan
Date of collection:	03/11/2021
Host species:	cattle
Serotype:	O
Topotype:	ME-SA
Lineage:	PanAsia-2
Sublineage:	ANT-10
Sequence length:	633
Ambiguities:	0
Material submitted for sequencing:	WRL-LFBK1
Harvest date of material:	13/01/2022
Primers:	O-1C244F/EUR-2B52R; FMD-3161F/FMD-4303R
Received for sequencing:	19/01/2022
Created:	21/01/2022
Last updated:	21/01/2022
VIBASys IDs: sample 50004, genome 50005, sequence viba_50006, sequencing info 50007	

#### Most Closely Related Sequences

sequence	virus name	Host	% Id.	# Ambig.	serotype	topotype	lineage	sublineage
viba_49955	JOR/603/2021	cattle	100.0	0	O	ME-SA	PanAsia-2	ANT-10
viba_50010	JOR/6/2021	cattle	100.0	0	O	ME-SA	PanAsia-2	ANT-10
viba_50014	JOR/7/2021	cattle	100.0	0	O	ME-SA	PanAsia-2	ANT-10
viba_49951	JOR/574/2021	cattle	100.0	0	O	ME-SA	PanAsia-2	ANT-10
viba_49250	435458/PAT/2021	sheep	100.0	0	O	ME-SA	PanAsia-2	ANT-10
viba_49959	JOR/609/2021	cattle	100.0	0	O	ME-SA	PanAsia-2	ANT-10
viba_49963	JOR/2T/2021	sheep	99.8	1	O	ME-SA	PanAsia-2	ANT-10
viba_50018	JOR/10/2021	sheep	99.7	0	O	ME-SA	PanAsia-2	ANT-10
viba_49129	JOR/1/2021/JUST	cattle	99.5	1	O	ME-SA	PanAsia-2	ANT-10
viba_49051	JOR/15/2021/JUST	sheep	96.8	0	O	ME-SA	PanAsia-2	ANT-10

#### Most Closely Related Prototype Sequences

see <http://www.wrlfmd.org/fmdv-genome/fmd-prototype-strains>

sequence	virus name	Host	% Id.	# Ambig.	serotype	topotype	lineage	sublineage
viba_719	IRN/88/2009		91.5	0	O	ME-SA	PanAsia-2	ANT-10
viba_766	IRN/31/2009	cattle	89.4	0	O	ME-SA	PanAsia-2	FAR-09
viba_293	BHU/3/2009	cattle	89.1	0	O	ME-SA	Ind-2001	d
viba_650	IRN/8/2005	ovine	89.1	0	O	ME-SA	PanAsia-2	
viba_491	TUR/257/2008		88.9	0	O	ME-SA	PanAsia-2	TER-08
viba_666	IRN/18/2010	cattle	88.8	0	O	ME-SA	PanAsia-2	BAL-09
viba_285	UKG/35/2001	porcine	88.7	0	O	ME-SA	PanAsia	
viba_505	TUR/264/2009		88.3	0	O	ME-SA	PanAsia-2	SAN-09
viba_354	PAK/16/2010	cattle	88.3	0	O	ME-SA	PanAsia-2	PUN-10
viba_860	IRN/6/2015	cattle	88.3	0	O	ME-SA	PanAsia-2	QOM-15

Virus sample name:	JOR/6/2021
Sender reference:	v603/2021
Location of origin:	Sal, Irbid Governorate
Country of origin:	Jordan
Date of collection:	07/12/2021
Host species:	cattle
Serotype:	O
Topotype:	ME-SA
Lineage:	PanAsia-2
Sublineage:	ANT-10
Sequence length:	633
Ambiguities:	0
Material submitted for sequencing:	WRL-LFBK1
Harvest date of material:	12/01/2022
Primers:	O-1C244F/EUR-2B52R; FMD-3161F/FMD-4303R
Received for sequencing:	19/01/2022
Created:	21/01/2022
Last updated:	21/01/2022
VIBASys IDs: sample 50008, genome 50009, sequence viba_50010, sequencing info 50011	

#### Most Closely Related Sequences

sequence	virus name	Host	% Id.	# Ambig.	serotype	topotype	lineage	sublineage
viba_49955	JOR/603/2021	cattle	100.0	0	O	ME-SA	PanAsia-2	ANT-10
viba_50014	JOR/7/2021	cattle	100.0	0	O	ME-SA	PanAsia-2	ANT-10
viba_50006	JOR/1/2021	cattle	100.0	0	O	ME-SA	PanAsia-2	ANT-10
viba_49951	JOR/574/2021	cattle	100.0	0	O	ME-SA	PanAsia-2	ANT-10
viba_49250	435458/PAT/2021	sheep	100.0	0	O	ME-SA	PanAsia-2	ANT-10
viba_49959	JOR/609/2021	cattle	100.0	0	O	ME-SA	PanAsia-2	ANT-10
viba_49963	JOR/2T/2021	sheep	99.8	1	O	ME-SA	PanAsia-2	ANT-10
viba_50018	JOR/10/2021	sheep	99.7	0	O	ME-SA	PanAsia-2	ANT-10
viba_49129	JOR/1/2021/JUST	cattle	99.5	1	O	ME-SA	PanAsia-2	ANT-10
viba_49051	JOR/15/2021/JUST	sheep	96.8	0	O	ME-SA	PanAsia-2	ANT-10

#### Most Closely Related Prototype Sequences

see <http://www.wrlfmd.org/fmdv-genome/fmd-prototype-strains>

sequence	virus name	Host	% Id.	# Ambig.	serotype	topotype	lineage	sublineage
viba_719	IRN/88/2009		91.5	0	O	ME-SA	PanAsia-2	ANT-10
viba_766	IRN/31/2009	cattle	89.4	0	O	ME-SA	PanAsia-2	FAR-09
viba_293	BHU/3/2009	cattle	89.1	0	O	ME-SA	Ind-2001	d
viba_650	IRN/8/2005	ovine	89.1	0	O	ME-SA	PanAsia-2	
viba_491	TUR/257/2008		88.9	0	O	ME-SA	PanAsia-2	TER-08
viba_666	IRN/18/2010	cattle	88.8	0	O	ME-SA	PanAsia-2	BAL-09
viba_285	UKG/35/2001	porcine	88.7	0	O	ME-SA	PanAsia	
viba_505	TUR/264/2009		88.3	0	O	ME-SA	PanAsia-2	SAN-09
viba_354	PAK/16/2010	cattle	88.3	0	O	ME-SA	PanAsia-2	PUN-10
viba_860	IRN/6/2015	cattle	88.3	0	O	ME-SA	PanAsia-2	QOM-15

Virus sample name:	JOR/7/2021
Sender reference:	v607/2021
Location of origin:	Dhlail, Zarqa Governorate
Country of origin:	Jordan
Date of collection:	08/12/2021
Host species:	cattle
Serotype:	O
Topotype:	ME-SA
Lineage:	PanAsia-2
Sublineage:	ANT-10
Sequence length:	633
Ambiguities:	0
Material submitted for sequencing:	WRL-LFBK1
Harvest date of material:	12/01/2022
Primers:	O-1C244F/EUR-2B52R; FMD-3161F/FMD-4303R
Received for sequencing:	19/01/2022
Created:	21/01/2022
Last updated:	21/01/2022

VIBASys IDs: sample 50012, genome 50013, sequence viba\_50014, sequencing info 50015

#### Most Closely Related Sequences

sequence	virus name	Host	% Id.	# Ambig.	serotype	topotype	lineage	sublineage
viba_49955	JOR/603/2021	cattle	100.0	0	O	ME-SA	PanAsia-2	ANT-10
viba_50010	JOR/6/2021	cattle	100.0	0	O	ME-SA	PanAsia-2	ANT-10
viba_50006	JOR/1/2021	cattle	100.0	0	O	ME-SA	PanAsia-2	ANT-10
viba_49951	JOR/574/2021	cattle	100.0	0	O	ME-SA	PanAsia-2	ANT-10
viba_49250	435458/PAT/2021	sheep	100.0	0	O	ME-SA	PanAsia-2	ANT-10
viba_49959	JOR/609/2021	cattle	100.0	0	O	ME-SA	PanAsia-2	ANT-10
viba_49963	JOR/2T/2021	sheep	99.8	1	O	ME-SA	PanAsia-2	ANT-10
viba_50018	JOR/10/2021	sheep	99.7	0	O	ME-SA	PanAsia-2	ANT-10
viba_49129	JOR/1/2021/JUST	cattle	99.5	1	O	ME-SA	PanAsia-2	ANT-10
viba_49051	JOR/15/2021/JUST	sheep	96.8	0	O	ME-SA	PanAsia-2	ANT-10

#### Most Closely Related Prototype Sequences

see <http://www.wrlfmd.org/fmdv-genome/fmd-prototype-strains>

sequence	virus name	Host	% Id.	# Ambig.	serotype	topotype	lineage	sublineage
viba_719	IRN/88/2009		91.5	0	O	ME-SA	PanAsia-2	ANT-10
viba_766	IRN/31/2009	cattle	89.4	0	O	ME-SA	PanAsia-2	FAR-09
viba_293	BHU/3/2009	cattle	89.1	0	O	ME-SA	Ind-2001	d
viba_650	IRN/8/2005	ovine	89.1	0	O	ME-SA	PanAsia-2	
viba_491	TUR/257/2008		88.9	0	O	ME-SA	PanAsia-2	TER-08
viba_666	IRN/18/2010	cattle	88.8	0	O	ME-SA	PanAsia-2	BAL-09
viba_285	UKG/35/2001	porcine	88.7	0	O	ME-SA	PanAsia	
viba_505	TUR/264/2009		88.3	0	O	ME-SA	PanAsia-2	SAN-09
viba_354	PAK/16/2010	cattle	88.3	0	O	ME-SA	PanAsia-2	PUN-10
viba_860	IRN/6/2015	cattle	88.3	0	O	ME-SA	PanAsia-2	QOM-15



Virus sample name:	JOR/10/2021
Sender reference:	v626/2021
Location of origin:	Kerak, Karak Governorate
Country of origin:	Jordan
Date of collection:	13/12/2021
Host species:	sheep
Serotype:	O
Topotype:	ME-SA
Lineage:	PanAsia-2
Sublineage:	ANT-10
Sequence length:	633
Ambiguities:	0
Material submitted for sequencing:	WRL-LFBK1
Harvest date of material:	15/01/2022
Primers:	O-1C244F/EUR-2B52R; FMD-3161F/FMD-4303R
Received for sequencing:	19/01/2022
Created:	21/01/2022
Last updated:	21/01/2022

VIBASys IDs: sample 50016, genome 50017, sequence viba\_50018, sequencing info 50019

#### Most Closely Related Sequences

sequence	virus name	Host	% Id.	# Ambig.	serotype	topotype	lineage	sublineage
viba_49955	JOR/603/2021	cattle	99.7	0	O	ME-SA	PanAsia-2	ANT-10
viba_50010	JOR/6/2021	cattle	99.7	0	O	ME-SA	PanAsia-2	ANT-10
viba_50014	JOR/7/2021	cattle	99.7	0	O	ME-SA	PanAsia-2	ANT-10
viba_50006	JOR/1/2021	cattle	99.7	0	O	ME-SA	PanAsia-2	ANT-10
viba_49951	JOR/574/2021	cattle	99.7	0	O	ME-SA	PanAsia-2	ANT-10
viba_49250	435458/PAT/2021	sheep	99.7	0	O	ME-SA	PanAsia-2	ANT-10
viba_49959	JOR/609/2021	cattle	99.7	0	O	ME-SA	PanAsia-2	ANT-10
viba_49963	JOR/2T/2021	sheep	99.5	1	O	ME-SA	PanAsia-2	ANT-10
viba_49129	JOR/1/2021/JUST	cattle	99.2	1	O	ME-SA	PanAsia-2	ANT-10
viba_49051	JOR/15/2021/JUST	sheep	96.5	0	O	ME-SA	PanAsia-2	ANT-10

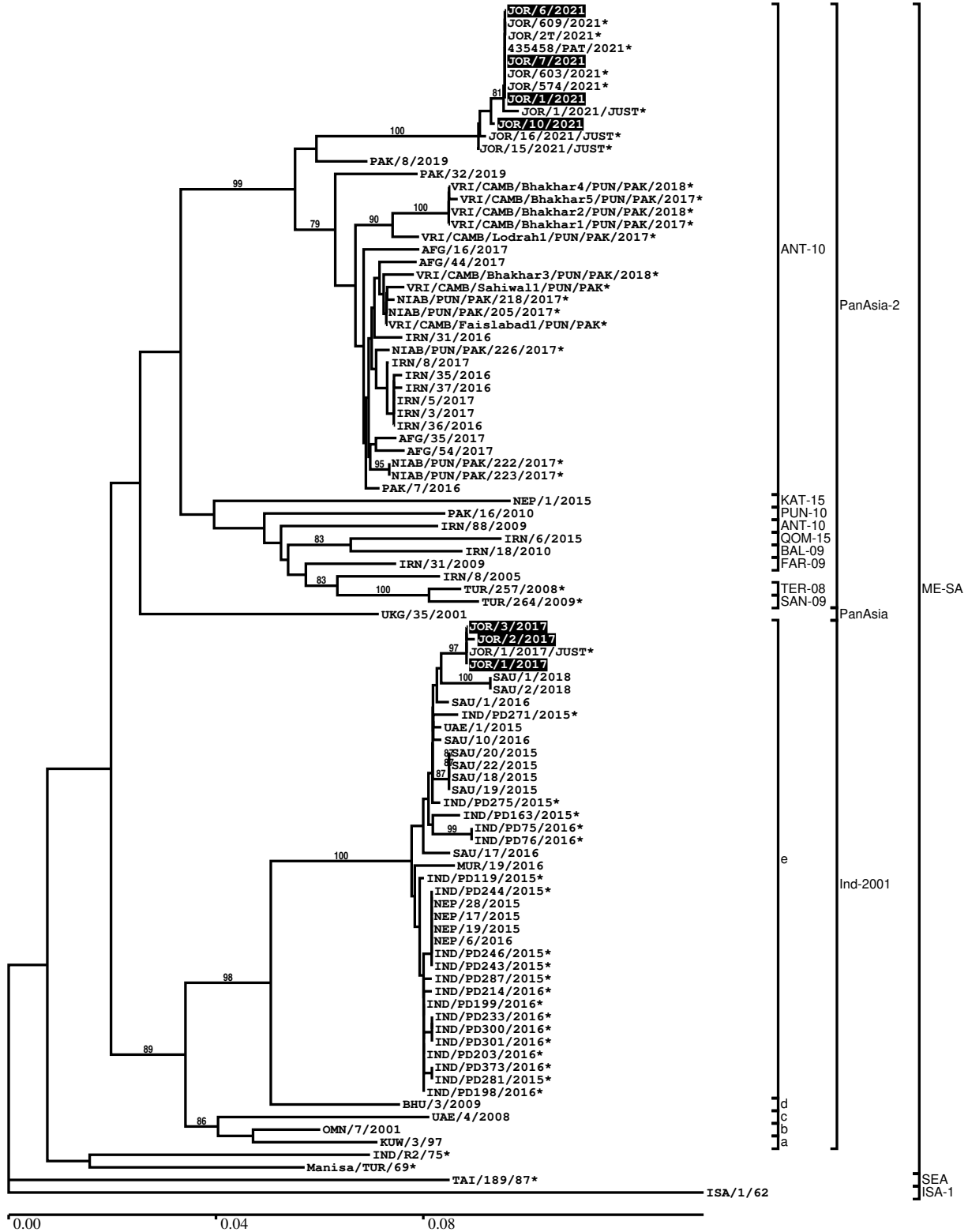
#### Most Closely Related Prototype Sequences

see <http://www.wrlfmd.org/fmdv-genome/fmd-prototype-strains>

sequence	virus name	Host	% Id.	# Ambig.	serotype	topotype	lineage	sublineage
viba_719	IRN/88/2009		91.5	0	O	ME-SA	PanAsia-2	ANT-10
viba_766	IRN/31/2009	cattle	89.4	0	O	ME-SA	PanAsia-2	FAR-09
viba_293	BHU/3/2009	cattle	89.1	0	O	ME-SA	Ind-2001	d
viba_650	IRN/8/2005	ovine	89.1	0	O	ME-SA	PanAsia-2	
viba_491	TUR/257/2008		88.9	0	O	ME-SA	PanAsia-2	TER-08
viba_666	IRN/18/2010	cattle	88.8	0	O	ME-SA	PanAsia-2	BAL-09
viba_285	UKG/35/2001	porcine	88.7	0	O	ME-SA	PanAsia	
viba_850	NEP/1/2015	cattle	88.5	1	O	ME-SA	PanAsia-2	KAT-15
viba_505	TUR/264/2009		88.3	0	O	ME-SA	PanAsia-2	SAN-09
viba_354	PAK/16/2010	cattle	88.3	0	O	ME-SA	PanAsia-2	PUN-10

Report on FMDV O in Jordan in 2017, 2021

Batch: WRLFMD/2021/00017



\*, not a WRLFMD Reference Number

## Analysis Parameters

VP1 subsequence extractor:	vp1_O
Query sequence set:	WRLFMD/2021/00017-Jordan-O (7 sequences)
Sequence database set:	allseqs_O (5492 sequences)
Prototype sequence set:	!prototypes_O (49 sequences)
Number of related sequences reported:	10
Minimal VP1 subsequence match length	600
Sequence alignment method:	muscle (default parameters)
Sequence alignment length:	636
Phylogeny reconstruction method:	fdnadist, fneighbor
Number of bootstrap samples:	1000
Random seed for bootstrapping:	1
Displaying bootstrap values above:	70.0%
Number of sequences in tree capped at:	100
Number of prototype sequences in tree:	17
VIBASys version:	reflabs-1.1.2

## Sequences in the Phylogenetic Tree

All sequences in the tree are in taxonomic group FMDV/O

label	accession	host(s)	lab	country	taxonomic information
JOR/6/2021	n/a	cattle	WRLFMD	Jordan	ME-SA/PanAsia-2/ANT-10
JOR/609/2021*	n/a	cattle	JUST	Jordan	ME-SA/PanAsia-2/ANT-10
JOR/2T/2021*	n/a	sheep	JUST	Jordan	ME-SA/PanAsia-2/ANT-10
435458/PAT/2021*	n/a	sheep	KVI	Palestinian AT	ME-SA/PanAsia-2/ANT-10
JOR/7/2021	n/a	cattle	WRLFMD	Jordan	ME-SA/PanAsia-2/ANT-10
JOR/603/2021*	n/a	cattle	JUST	Jordan	ME-SA/PanAsia-2/ANT-10
JOR/574/2021*	n/a	cattle	JUST	Jordan	ME-SA/PanAsia-2/ANT-10
JOR/1/2021	n/a	cattle	WRLFMD	Jordan	ME-SA/PanAsia-2/ANT-10
JOR/1/2021/JUST*	n/a	cattle	JUST	Jordan	ME-SA/PanAsia-2/ANT-10
JOR/10/2021	n/a	sheep	WRLFMD	Jordan	ME-SA/PanAsia-2/ANT-10
JOR/16/2021/JUST*	n/a	sheep	JUST	Jordan	ME-SA/PanAsia-2/ANT-10
JOR/15/2021/JUST*	n/a	sheep	JUST	Jordan	ME-SA/PanAsia-2/ANT-10
PAK/8/2019	n/a	cattle	WRLFMD	Pakistan	ME-SA/PanAsia-2/ANT-10
PAK/32/2019	n/a	cattle	WRLFMD	Pakistan	ME-SA/PanAsia-2/ANT-10
VRI/CAMB/Bhakhir4/PUN/PAK/2018*	MK342187	cattle	VRI-CAMB	Pakistan	ME-SA/PanAsia-2/ANT-10
VRI/CAMB/Bhakhir5/PUN/PAK/2017*	MK342188	water buffalo	VRI-CAMB	Pakistan	ME-SA/PanAsia-2/ANT-10
VRI/CAMB/Bhakhir2/PUN/PAK/2018*	MK342185	cattle	VRI-CAMB	Pakistan	ME-SA/PanAsia-2/ANT-10
VRI/CAMB/Bhakhir1/PUN/PAK/2017*	MK342184	cattle	VRI-CAMB	Pakistan	ME-SA/PanAsia-2/ANT-10
VRI/CAMB/Lodrah1/PUN/PAK/2017*	MK342179	cattle	VRI-CAMB	Pakistan	ME-SA/PanAsia-2/ANT-10

*continued on next page*

label	accession	host(s)	lab	country	taxonomic information
AFG/16/2017	n/a	cattle	WRLFMD	Afghanistan	ME-SA/PanAsia-2/ANT-10
AFG/44/2017	n/a	bovine	WRLFMD	Afghanistan	ME-SA/PanAsia-2/ANT-10
VRI/CAMB/Bhakhar3/PUN/PAK/2018*	MK342186	cattle	VRI-CAMB	Pakistan	ME-SA/PanAsia-2/ANT-10
VRI/CAMB/Sahiwal1/PUN/PAK*	MK292143	cattle	VRI-CAMB	Pakistan	ME-SA/PanAsia-2/ANT-10
NIAB/PUN/PAK/218/2017*	MH085204	n/a	NIAB	Pakistan	ME-SA/PanAsia-2/ANT-10
NIAB/PUN/PAK/205/2017*	MF140436	water buffalo	NIAB	Pakistan	ME-SA/PanAsia-2/ANT-10
VRI/CAMB/Faislabad1/PUN/PAK*	MK292142	cattle	VRI-CAMB	Pakistan	ME-SA/PanAsia-2/ANT-10
IRN/31/2016	n/a	cattle	WRLFMD	Iran	ME-SA/PanAsia-2/ANT-10
NIAB/PUN/PAK/226/2017*	MH085208	n/a	NIAB	Pakistan	ME-SA/PanAsia-2/ANT-10
IRN/8/2017	n/a	cattle	WRLFMD	Iran	ME-SA/PanAsia-2/ANT-10
IRN/35/2016	n/a	cattle	WRLFMD	Iran	ME-SA/PanAsia-2/ANT-10
IRN/37/2016	n/a	cattle	WRLFMD	Iran	ME-SA/PanAsia-2/ANT-10
IRN/5/2017	n/a	cattle	WRLFMD	Iran	ME-SA/PanAsia-2/ANT-10
IRN/3/2017	n/a	sheep	WRLFMD	Iran	ME-SA/PanAsia-2/ANT-10
IRN/36/2016	n/a	sheep	WRLFMD	Iran	ME-SA/PanAsia-2/ANT-10
AFG/35/2017	n/a	cattle	WRLFMD	Afghanistan	ME-SA/PanAsia-2/ANT-10
AFG/54/2017	n/a	bovine	WRLFMD	Afghanistan	ME-SA/PanAsia-2/ANT-10
NIAB/PUN/PAK/222/2017*	MH085206	n/a	NIAB	Pakistan	ME-SA/PanAsia-2/ANT-10
NIAB/PUN/PAK/223/2017*	MH085207	n/a	NIAB	Pakistan	ME-SA/PanAsia-2/ANT-10
PAK/7/2016	n/a	cattle	WRLFMD	Pakistan	ME-SA/PanAsia-2/ANT-10
NEP/1/2015	MN276045	cattle	WRLFMD	Nepal	ME-SA/PanAsia-2/KAT-15
PAK/16/2010	KY091285	cattle	WRLFMD	Pakistan	ME-SA/PanAsia-2/PUN-10
IRN/88/2009	KY091282	n/a	WRLFMD	Iran	ME-SA/PanAsia-2/ANT-10
IRN/6/2015	MN276044	cattle	WRLFMD	Iran	ME-SA/PanAsia-2/QOM-15
IRN/18/2010	KY091283	cattle	WRLFMD	Iran	ME-SA/PanAsia-2/BAL-09
IRN/31/2009	KY091284	cattle	WRLFMD	Iran	ME-SA/PanAsia-2/FAR-09
IRN/8/2005	KY091281	ovine	WRLFMD	Iran	ME-SA/PanAsia-2
TUR/257/2008*	n/a	n/a	FMDI-Ankara	Turkey	ME-SA/PanAsia-2/TER-08
TUR/264/2009*	n/a	n/a	FMDI-Ankara	Turkey	ME-SA/PanAsia-2/SAN-09
UKG/35/2001	AJ539141	porcine	PIADC	United Kingdom	ME-SA/PanAsia
JOR/3/2017	n/a	sheep	WRLFMD	Jordan	ME-SA/Ind-2001/e
JOR/2/2017	n/a	sheep	WRLFMD	Jordan	ME-SA/Ind-2001/e
JOR/1/2017/JUST*	MH053353	sheep	JUST	Jordan	ME-SA/Ind-2001/e
JOR/1/2017	n/a	cattle	WRLFMD	Jordan	ME-SA/Ind-2001/e
SAU/1/2018	n/a	oryx	WRLFMD	Saudi Arabia	ME-SA/Ind-2001/e
SAU/2/2018	n/a	gazelle	WRLFMD	Saudi Arabia	ME-SA/Ind-2001/e
SAU/1/2016	MG972593	cattle	WRLFMD	Saudi Arabia	ME-SA/Ind-2001/e

*continued on next page*

label	accession	host(s)	lab	country	taxonomic information
IND/PD271/2015*	MT909656	cattle	PD-FMD	India	ME-SA/Ind-2001/e
UAE/1/2015	MG972605	gazelle	WRLFMD	United Arab Emirates	ME-SA/Ind-2001/e
SAU/10/2016	MG972597	bovine	WRLFMD	Saudi Arabia	ME-SA/Ind-2001/e
SAU/20/2015	MG972591	bovine	WRLFMD	Saudi Arabia	ME-SA/Ind-2001/e
SAU/22/2015	MG972592	bovine	WRLFMD	Saudi Arabia	ME-SA/Ind-2001/e
SAU/18/2015	MG972589	bovine	WRLFMD	Saudi Arabia	ME-SA/Ind-2001/e
SAU/19/2015	MG972590	bovine	WRLFMD	Saudi Arabia	ME-SA/Ind-2001/e
IND/PD275/2015*	MT909657	cattle	PD-FMD	India	ME-SA/Ind-2001/e
IND/PD163/2015*	MT909638	cattle	PD-FMD	India	ME-SA/Ind-2001/e
IND/PD75/2016*	MT909666	water buffalo	PD-FMD	India	ME-SA/Ind-2001/e
IND/PD76/2016*	MT909667	water buffalo	PD-FMD	India	ME-SA/Ind-2001/e
SAU/17/2016	MG972598	cattle	WRLFMD	Saudi Arabia	ME-SA/Ind-2001/e
MUR/19/2016	MG972510	cattle	WRLFMD	Mauritius	ME-SA/Ind-2001/e
IND/PD119/2015*	MT909624	cattle	PD-FMD	India	ME-SA/Ind-2001/e
IND/PD244/2015*	MT909649	cattle	PD-FMD	India	ME-SA/Ind-2001/e
NEP/28/2015	KY449052	cattle	WRLFMD	Nepal	ME-SA/Ind-2001/e
NEP/17/2015	KY449050	cattle	WRLFMD	Nepal	ME-SA/Ind-2001/e
NEP/19/2015	KY449051	cattle	WRLFMD	Nepal	ME-SA/Ind-2001/e
NEP/6/2016	KY449054	cattle	WRLFMD	Nepal	ME-SA/Ind-2001/e
IND/PD246/2015*	MT909650	cattle	PD-FMD	India	ME-SA/Ind-2001/e
IND/PD243/2015*	MT909648	cattle	PD-FMD	India	ME-SA/Ind-2001/e
IND/PD287/2015*	MT909659	cattle	PD-FMD	India	ME-SA/Ind-2001/e
IND/PD214/2016*	MT909675	cattle	PD-FMD	India	ME-SA/Ind-2001/e
IND/PD199/2016*	MT909673	cattle	PD-FMD	India	ME-SA/Ind-2001/e
IND/PD233/2016*	MT909676	cattle	PD-FMD	India	ME-SA/Ind-2001/e
IND/PD300/2016*	MT909687	cattle	PD-FMD	India	ME-SA/Ind-2001/e
IND/PD301/2016*	MT909688	cattle	PD-FMD	India	ME-SA/Ind-2001/e
IND/PD203/2016*	MT909674	cattle	PD-FMD	India	ME-SA/Ind-2001/e
IND/PD373/2016*	MT909702	cattle	PD-FMD	India	ME-SA/Ind-2001/e
IND/PD281/2015*	MT909658	cattle	PD-FMD	India	ME-SA/Ind-2001/e
IND/PD198/2016*	MT909672	cattle	PD-FMD	India	ME-SA/Ind-2001/e
BHU/3/2009	KM921814	cattle	WRLFMD	Bhutan	ME-SA/Ind-2001/d
UAE/4/2008	KM921876	gazelle	WRLFMD	United Arab Emirates	ME-SA/Ind-2001/c
OMN/7/2001	DQ164941	bovine	WRLFMD	Oman	ME-SA/Ind-2001/b
KUW/3/97	DQ164904	bovine	WRLFMD	Kuwait	ME-SA/Ind-2001/a
IND/R2/75*	AF204276	n/a	PD-FMD	India	ME-SA
Manisa/TUR/69*	AY593823	n/a	PIADC	Turkey	ME-SA
TAI/189/87*	KY091288	bovine	TRRL	Thailand	SEA
ISA/1/62	AJ303500	n/a	WRLFMD	Indonesia	ISA-1

\*, not a WRLFMD Reference Number

n/a, not available