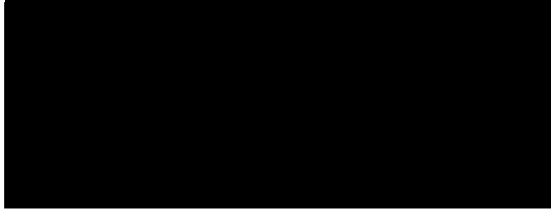




FMD Genotyping Report

Lab Reference WRL batch Number: WRLFMD/2025/000020

Sender Details:

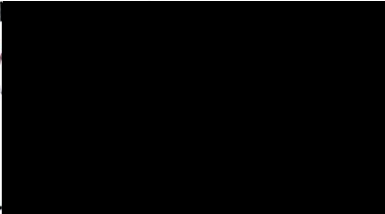


Date Received: 22/12/2025

Country of Origin*: Azerbaijan

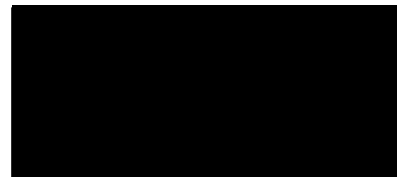
Work has now been completed in respect of the sequences recently submitted and the details are as attached. Please note that all our phylogenetic trees can be accessed via the internet at:
<http://www.wrlfmd.org/>

Result:



Date: 08/01/2026

Official Stamp:



To help us improve the quality of our service, please send any suggestions or requests to the Reference Laboratory by email (reflabsfeedback@pirbright.ac.uk).

* Data supplied by the customer



WOAH/FAO
Foot-and-Mouth Disease
Reference Laboratories
Network



FAO World Reference Laboratory for Foot-and-Mouth Disease (WRLFMD)

FMDV Genotyping Report

Generated from: **FMDtype** | FMDV Genotyping Tool

Downloaded on: 07 January 2026

Citation: WRLFMD. 2026. FMDV Genotyping Report [WRLFMD/2025/000020]. (Accessed 07/01/26)

FMDV serotype: SAT1

Country: Azerbaijan

Year: 2025

Batch: WRLFMD/2025/000020

No. of sequences: 2

Reported date: 07 January 2026

WRLFMD Website: <https://www.wrlfmd.org/>

Email: reporting@pirbright.ac.uk

The contents of this report should not be reproduced without permission.

Copyright © 2026 The Pirbright Institute, Ash Road, Pirbright, Woking GU24 0NF, United Kingdom.

FMDtype is supported through funding from

Virus sample: AZB/1/2025

Sample details

Reception Date:	2025-12-22
Sender reference:	2XDZJ9D-0001
Location of origin:	Jeyranchol, Agstafa, Ganja-Qazakh
Country of origin:	Azerbaijan
Date of collection:	2025-10-27
Host species:	cattle

Genotyping details

Serotype:	SAT1
Topotype:	III
Lineage:	None
Sublineage:	None

Sequencing details

Material submitted for sequencing:	OS
Material Harvest Date:	NA
Sequence length:	657
Ambiguities:	0

Most Closely Related FMDV Isolates

Sequence ID	Virus Name	Host	% Id	#Ambig.	Serotype	Topotype	Lineage	Sublineage
FMDV VP1 Sequences								
1243595	AZB/2/2025	Cattle	100.00	0	SAT1	III	None	None
11357	NMB/1/2015	Bovine	99.54	0	SAT1	III	None	None
1243592	TUR/Igdir/1217/25	Cattle	99.54	0	SAT1	III	None	None
3453	BOT/17/77	Greater Kudu	99.39	0	SAT1	III	None	None
3478	BOT/24/77	Cattle	99.39	0	SAT1	III	None	None
1243593	UT-Khorasani_A/1627/IRN/2025	Cattle	98.78	0	SAT1	III	None	None
14377	SWA/80/62		90.26	0	SAT1	III	None	None
14375	SWA/40/61		90.24	0	SAT1	III	None	None
3603	BOT08/2020	Bovine	89.02	0	SAT1	III	None	None
3604	BOT10/2020	Bovine	88.87	0	SAT1	III	None	None
FMDV VP1 Prototype Sequences*								
3416	BOT/1/77	Cattle	99.70	0	SAT1	III	None	None
3410	BOT/1/68	Cattle	90.85	0	SAT1	III	None	None
19096	ZIM/23/2003	African Buffalo	74.10	0	SAT1	I	None	None

* see <http://www.wrifmd.org/fmdv-genome/fmd-prototype-strains>

Virus sample: AZB/2/2025

Sample details

Reception Date:	2025-12-22
Sender reference:	2XDZJ9D-0002
Location of origin:	Jeyranchol, Agstafa, Ganja-Qazakh
Country of origin:	Azerbaijan
Date of collection:	2025-10-27
Host species:	cattle

Genotyping details

Serotype:	SAT1
Topotype:	III
Lineage:	None
Sublineage:	None

Sequencing details

Material submitted for sequencing:	OS
Material Harvest Date:	NA
Sequence length:	657
Ambiguities:	0

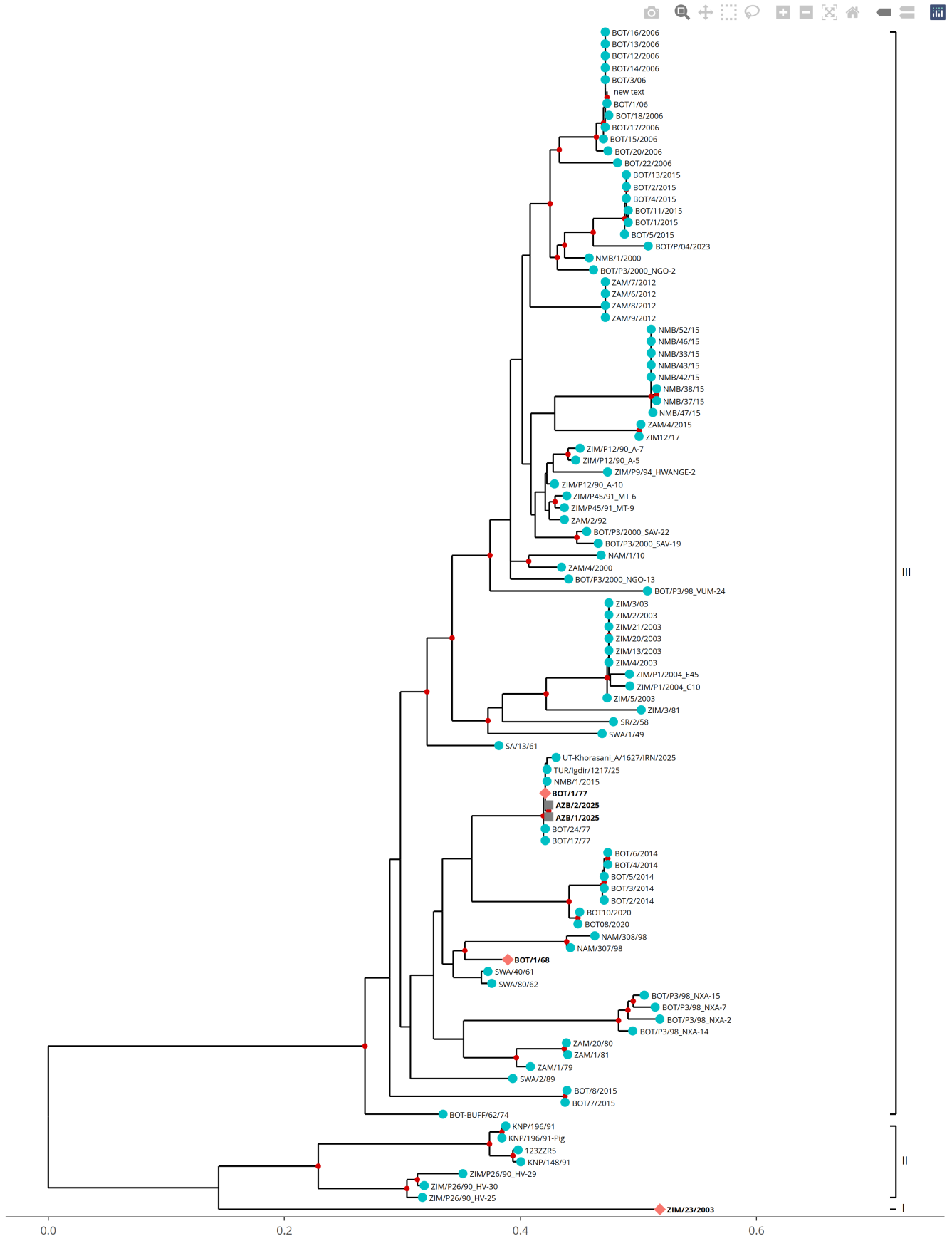
Most Closely Related FMDV Isolates

Sequence ID	Virus Name	Host	% Id	#Ambig.	Serotype	Topotype	Lineage	Sublineage
FMDV VP1 Sequences								
1243594	AZB/1/2025	Cattle	100.00	0	SAT1	III	None	None
11357	NMB/1/2015	Bovine	99.54	0	SAT1	III	None	None
1243592	TUR/Igdir/1217/25	Cattle	99.54	0	SAT1	III	None	None
3453	BOT/17/77	Greater Kudu	99.39	0	SAT1	III	None	None
3478	BOT/24/77	Cattle	99.39	0	SAT1	III	None	None
1243593	UT-Khorasani_A/1627/IRN/2025	Cattle	98.78	0	SAT1	III	None	None
14377	SWA/80/62		90.26	0	SAT1	III	None	None
14375	SWA/40/61		90.24	0	SAT1	III	None	None
3603	BOT08/2020	Bovine	89.02	0	SAT1	III	None	None
3604	BOT10/2020	Bovine	88.87	0	SAT1	III	None	None
FMDV VP1 Prototype Sequences*								
3416	BOT/1/77	Cattle	99.70	0	SAT1	III	None	None
3410	BOT/1/68	Cattle	90.85	0	SAT1	III	None	None
19096	ZIM/23/2003	African Buffalo	74.10	0	SAT1	I	None	None

* see <http://www.wrifmd.org/fmdv-genome/fmd-prototype-strains>

Tree

■ Uploaded sequence ● Database sequence ◆ Reference sequence



Analysis Parameters

Query sequence set: WRLFMD/2025/000020
Number of related sequences reported: 94
Number of prototype sequences in tree: 3
Minimal VP1 subsequence match length: 610
Sequence alignment length: 668

Number of sequences in tree capped at: 100
Sequence alignment method: MAFFT 7.522
Phylogeny reconstruction method: IQ-TREE 2.26
Number of bootstrap samples: 1000
Displaying bootstrap values above: 75

FMDV VP1 Sequences included in the Phylogenetic Tree

Sequence Name	GenBank Accession	Host	Ref Lab	Country	FMDV Taxonomy	Pubmed Reference Number
NAM/1/10 *	KJ999923	Cattle	OVI	Namibia	SAT1/III	None
NAM/307/98 *	AY770519	African Buffalo	OVI	Namibia	SAT1/III	17161881
NAM/308/98 *	KJ999922	African Buffalo	OVI	Namibia	SAT1/III	None
NMB/1/2000	None	Bovine	WRLFMD	Namibia	SAT1/III	None
NMB/1/2015	None	Bovine	WRLFMD	Namibia	SAT1/III	None
NMB/33/15 *	None	Cattle	BVI	Namibia	SAT1/III	None
NMB/37/15 *	None	Cattle	BVI	Namibia	SAT1/III	None
NMB/38/15 *	None	Cattle	BVI	Namibia	SAT1/III	None
NMB/42/15 *	None	Cattle	BVI	Namibia	SAT1/III	None
NMB/43/15 *	None	Cattle	BVI	Namibia	SAT1/III	None
NMB/46/15 *	None	Cattle	BVI	Namibia	SAT1/III	None
NMB/47/15 *	None	Cattle	BVI	Namibia	SAT1/III	None
NMB/52/15 *	None	Cattle	BVI	Namibia	SAT1/III	None
TUR/Igdir/1217/25 *	None	Cattle	MAF-ANKARA	Turkiye	SAT1/III	None
UT-Khorasani_A/1627/IRN/2025 *	PX496948	Cattle	U-TEHRAN	Iran	SAT1/III	None
SA/13/61 *	AY593842	Cattle	PIADC	South Africa	SAT1/III	15858032
123ZZR5 *	KR108952		OVI	South Africa (Kruger National Park)	SAT1/II	None
KNP/148/91 *	GU194495	African Buffalo	OVI	South Africa (Kruger National Park)	SAT1/II	None
KNP/196/91 *	AF283429	African Buffalo	OVI	South Africa (Kruger National Park)	SAT1/III	12036580
SWA/1/49 *	AY593840		PIADC	South West Africa	SAT1/III	15858032
SWA/2/89	MH053322	African Buffalo	WRLFMD	South West Africa	SAT1/III	29652800
SWA/40/61 *	AY593843		PIADC	South West Africa	SAT1/III	15858032
SWA/80/62	None		WRLFMD	South West Africa	SAT1/III	None
SR/2/58 *	AY593841	Cattle	PIADC	Southern Rhodesia	SAT1/III	15858032
ZAM/1/79	None		WRLFMD	Zambia	SAT1/III	None
ZAM/1/81	None	Cattle	WRLFMD	Zambia	SAT1/III	None
ZAM/20/80	None	Cattle	WRLFMD	Zambia	SAT1/III	None
ZAM/4/2000	None	Bovine	WRLFMD	Zambia	SAT1/III	None
ZAM/6/2012	None	Bovine	WRLFMD	Zambia	SAT1/III	None
ZAM/7/2012	None	Bovine	WRLFMD	Zambia	SAT1/III	None
ZAM/8/2012	None	Bovine	WRLFMD	Zambia	SAT1/III	None
ZAM/9/2012	None	Bovine	WRLFMD	Zambia	SAT1/III	None
ZIM/13/2003	None		WRLFMD	Zimbabwe	SAT1/III	None
ZIM/2/2003	None	Bovine	WRLFMD	Zimbabwe	SAT1/III	None
ZIM/20/2003	None	Cattle	WRLFMD	Zimbabwe	SAT1/III	None
ZIM/21/2003	None	Cattle	WRLFMD	Zimbabwe	SAT1/III	None
ZIM/3/03 *	KJ999926	Cattle	OVI	Zimbabwe	SAT1/III	None
ZIM/3/81	None	Cattle	WRLFMD	Zimbabwe	SAT1/III	None
ZIM/4/2003	None		WRLFMD	Zimbabwe	SAT1/III	None
ZIM/5/2003	None		WRLFMD	Zimbabwe	SAT1/III	None
ZIM/P1/2004_C10	None	Cattle	WRLFMD	Zimbabwe	SAT1/III	None
ZIM/P1/2004_E45	None	Cattle	WRLFMD	Zimbabwe	SAT1/III	None
ZIM/P12/90_A-10	MT385532	African Buffalo	WRLFMD	Zimbabwe	SAT1/III	None
ZIM/P12/90_A-5	MT385530	African Buffalo	WRLFMD	Zimbabwe	SAT1/III	None
ZIM/P12/90_A-7	MT385531	African Buffalo	WRLFMD	Zimbabwe	SAT1/III	None
ZIM/P26/90_HV-25	MT385538	African Buffalo	WRLFMD	Zimbabwe	SAT1/II	None
ZIM/P26/90_HV-29	MT385541	African Buffalo	WRLFMD	Zimbabwe	SAT1/II	None
ZIM/P26/90_HV-30	MT385542	African Buffalo	WRLFMD	Zimbabwe	SAT1/II	None
ZIM/P45/91_MT-6	MT385595	African Buffalo	WRLFMD	Zimbabwe	SAT1/III	None
ZIM/P45/91_MT-9	MT385596	African Buffalo	WRLFMD	Zimbabwe	SAT1/III	None
ZIM/P9/94_HWANGE-2	MT385604	African Buffalo	WRLFMD	Zimbabwe	SAT1/III	None
ZIM12/17 *	None	Bovine	BVI	Zimbabwe	SAT1/III	None
ZAM/4/2015	None	Cattle	WRLFMD	Zambia	SAT1/III	None
ZAM/2/92	None	Bovine	WRLFMD	Zambia	SAT1/III	None
BOT/1/06 *	KJ999919	Cattle	OVI	Botswana	SAT1	None
-	-	-	-	-	-	-
BOT/1/2015	None	Bovine	WRLFMD	Botswana	SAT1/III	None
BOT/11/2015 *	None	Cattle	BVI	Botswana	SAT1/III	None
BOT/12/2006	None	Cattle	WRLFMD	Botswana	SAT1/III	None
BOT/13/2006	None	Cattle	WRLFMD	Botswana	SAT1/III	None
BOT/13/2015 *	None	Cattle	BVI	Botswana	SAT1/III	None
BOT/14/2006	None	Cattle	WRLFMD	Botswana	SAT1/III	None

FMDV VP1 Sequences included in the Phylogenetic Tree (continued)

Sequence Name	GenBank Accession	Host	Ref Lab	Country	FMDV Taxonomy	Pubmed Reference Number
BOT/15/2006	None	Cattle	WRLFMD	Botswana	SAT1/III	None
BOT/16/2006	None	Cattle	WRLFMD	Botswana	SAT1/III	None
BOT/17/2006	None	Cattle	WRLFMD	Botswana	SAT1/III	None
BOT/17/77	KF219687	Greater Kudu	WRLFMD	Botswana	SAT1/III	None
BOT/18/2006	None	Cattle	WRLFMD	Botswana	SAT1/III	None
BOT/2/2014	None	Bovine	WRLFMD	Botswana	SAT1/III	None
BOT/2/2015	None	Bovine	WRLFMD	Botswana	SAT1/III	None
BOT/20/2006	None	African Buffalo	WRLFMD	Botswana	SAT1/III	None
BOT/22/2006	None	African Buffalo	WRLFMD	Botswana	SAT1/III	None
BOT/24/77	KF219688	Cattle	WRLFMD	Botswana	SAT1/III	None
BOT/3/06 *	KJ999920	Cattle	OVI	Botswana	SAT1/III	None
BOT/3/2014	None	Bovine	WRLFMD	Botswana	SAT1/III	None
BOT/4/2014	None	Bovine	WRLFMD	Botswana	SAT1/III	None
BOT/4/2015	None	Bovine	WRLFMD	Botswana	SAT1/III	None
BOT/5/2014 *	None	Cattle	BVI	Botswana	SAT1/III	None
BOT/5/2015	None	Bovine	WRLFMD	Botswana	SAT1/III	None
BOT/6/2014 *	None	Cattle	BVI	Botswana	SAT1/III	None
BOT/7/2015	None	Bovine	WRLFMD	Botswana	SAT1/III	None
BOT/8/2015	None	Bovine	WRLFMD	Botswana	SAT1/III	None
BOT/P3/2000_NGO-13	None	African Buffalo	WRLFMD	Botswana	SAT1/III	None
BOT/P3/2000_NGO-2	None	African Buffalo	WRLFMD	Botswana	SAT1/III	None
BOT/P3/2000_SAV-19	None	African Buffalo	WRLFMD	Botswana	SAT1/III	None
BOT/P3/2000_SAV-22	None	African Buffalo	WRLFMD	Botswana	SAT1/III	None
BOT/P3/98_NXA-14	None	African Buffalo	WRLFMD	Botswana	SAT1/III	None
BOT/P3/98_NXA-15	None	African Buffalo	WRLFMD	Botswana	SAT1/III	None
BOT/P3/98_NXA-2	None	African Buffalo	WRLFMD	Botswana	SAT1/III	None
BOT/P3/98_NXA-7	None	African Buffalo	WRLFMD	Botswana	SAT1/III	None
BOT/P3/98_VUM-24	None	African Buffalo	WRLFMD	Botswana	SAT1/III	None
BOT08/2020 *	None	Bovine	BVI	Botswana	SAT1/III	None
BOT10/2020 *	None	Bovine	BVI	Botswana	SAT1/III	None
BOT-BUFF/62/74	MH053319	African Buffalo	WRLFMD	Botswana	SAT1/III	29652800
BOT/P/04/2023 *	None	African Buffalo	BVI	Botswana	SAT1/III	None
KNP/196/91-Pig *	MN442539	African Buffalo	OVI	South Africa	SAT1/II	None

* Not a WRLFMD Reference Number;

^ Not Available