

Serotype: ASIA1	Report date: 31/01/2006						
WRL Ref No: Amursky/RUS/Dec2005							
Sender Ref: Amursky/RUS/Dec2005	Topotype: none defined						
Date collected: 14/12/2005?	Genotype/strain: none designated						
Date received by WRLFMD: 31/01/2006 (sequence only)	Sequence filename: RUS05-AE.SEQ						
Species: Cattle	Date sequence last updated: 31/01/2006						
Material used: not known	Total no. of comparisons: 422						
Region sequenced: VP1	Min. no. of nt for comparison: 300						
RT-PCR primers: not known	Total turn-around time: 1 day						
No. of Nt determined: 633	Sequencing time: n/a						
No. of ambiguities: 0							
Gene length: 633							
Comments: Complete VP1 sequence received from Alexey Scherbakov (FGI ARRIAH)							
<b>Ten Most Closely Related Viruses</b>							
Pos.	Virus name	Filename	No. nt compared	No. nt matched	No. of ambiguities	% Identity	% Difference
1	As1/Khabarovsk/RUS/2005 [ARRIAH]	RUS05-AB	633	631	0	99.68	0.32
2	As1/Khabarovsk/RUS/Dec2005 [ARRIAH]	RUS05-AD	633	629	0	99.37	0.63
3	As1/YanQuing/BJ/CHA/2005 [LVRI]	CHA05-AC	633	629	0	99.37	0.63
4	As1/Amursky/RUS/2005 [DQ121401]	RUS05-AA	633	629	0	99.37	0.63
5	As1/MOG/2005 [ARRIAH]	MOG05-AA	633	629	0	99.37	0.63
6	As1/Pymorsky/RUS/2005 [ARRIAH]	RUS05-AC	633	629	0	99.37	0.63
7	As1/TongRen/QH/CHA/2005 [LVRI]	CHA05-AG	633	628	0	99.21	0.79
8	As1/WuXi/JS/CHA/2005 [LVRI]	CHA05-AB	633	626	0	98.89	1.11
9	As1/JingNing/GS/CHA/2005 [LVRI]	CHA05-AF	633	626	0	98.89	1.11
10	As1/Chita/RUS/2006 [ARRIAH]	RUS06-AA	633	626	0	98.89	1.11
<b>Relationships to Reference Virus Strains</b>							
Pos.	Virus name	Filename	No. nt compared	No. nt matched	No. of ambiguities	% Identity	% Difference
1	As1/Kimron/ISR/57 [AY593797]	ISR57KIM	633	569	0	89.89	10.11
2	As1/IND/63/72 [Y09949]	IND72B63	630	559	0	88.73	11.27
3	As1/YNBS/CHA/58 [AY390432]	CHA58-AA	633	548	0	86.57	13.43
4	As1/IND/WBN/117/85* [AY687334]	IND85-AA	633	546	0	86.26	13.74
5	As1/IND/8/79	IND79-08	633	546	0	86.26	13.74
6	As1/Shamir/ISR/89	ISR89--A	633	544	0	85.94	14.06
7	As1/PAK/1/54	PAK54-01	630	535	0	84.92	15.08
8	As1/TAI/85 vs	TAI85-AA	633	536	0	84.68	15.32
9	As1/CAM/9/80	CAM80-09	633	528	0	83.41	16.59
nt, nucleotides							
*, not a WRLFMD reference number							

Serotype: ASIA1	Report date: 31/01/2006
WRL Ref No: Khabarovsk/RUS/Dec2005	
Sender Ref: Khabarovsk/RUS/Dec2005	Topotype: none defined
Date collected: 14/12/2005	Genotype/strain: none designated
Date received by WRLFMD: 31/01/2006 (sequence only)	Sequence filename: RUS05-AD.SEQ
Species: Cattle	Date sequence last updated: 31/01/2006
Material used: not known	Total no. of comparisons: 422
Region sequenced: VP1	Min. no. of nt for comparison: 300
RT-PCR primers: not known	Total turn-around time: 1 day
No. of Nt determined: 633	Sequencing time: n/a
No. of ambiguities: 0	
Gene length: 633	

Comments: Complete VP1 sequence received from Alexey Scherbakov (FGI ARRIAH)

#### Ten Most Closely Related Viruses

Pos.	Virus name	Filename	No. nt compared	No. nt matched	No. of ambiguities	% Identity	% Difference
1	As1/Khabarovsk/RUS/2005 [ARRIAH]	RUS05-AB	633	631	0	99.68	0.32
2	As1/Amursky/RUS/Dec2005 [ARRIAH]	RUS05-AE	633	629	0	99.37	0.63
3	As1/YanQuing/BJ/CHA/2005 [LVRI]	CHA05-AC	633	627	0	99.05	0.95
4	As1/Amursky/RUS/2005 [DQ121401]	RUS05-AA	633	627	0	99.05	0.95
5	As1/MOG/2005 [ARRIAH]	MOG05-AA	633	627	0	99.05	0.95
6	As1/Prymorsky/RUS/2005 [ARRIAH]	RUS05-AC	633	627	0	99.05	0.95
7	As1/TongRen/QH/CHA/2005 [LVRI]	CHA05-AG	633	626	0	98.89	1.11
8	As1/WuXi/JS/CHA/2005 [LVRI]	CHA05-AB	633	624	0	98.58	1.42
9	As1/JingNing/GS/CHA/2005 [LVRI]	CHA05-AF	633	624	0	98.58	1.42
10	As1/Chita/RUS/2006 [ARRIAH]	RUS06-AA	633	624	0	98.58	1.42

#### Relationships to Reference Virus Strains

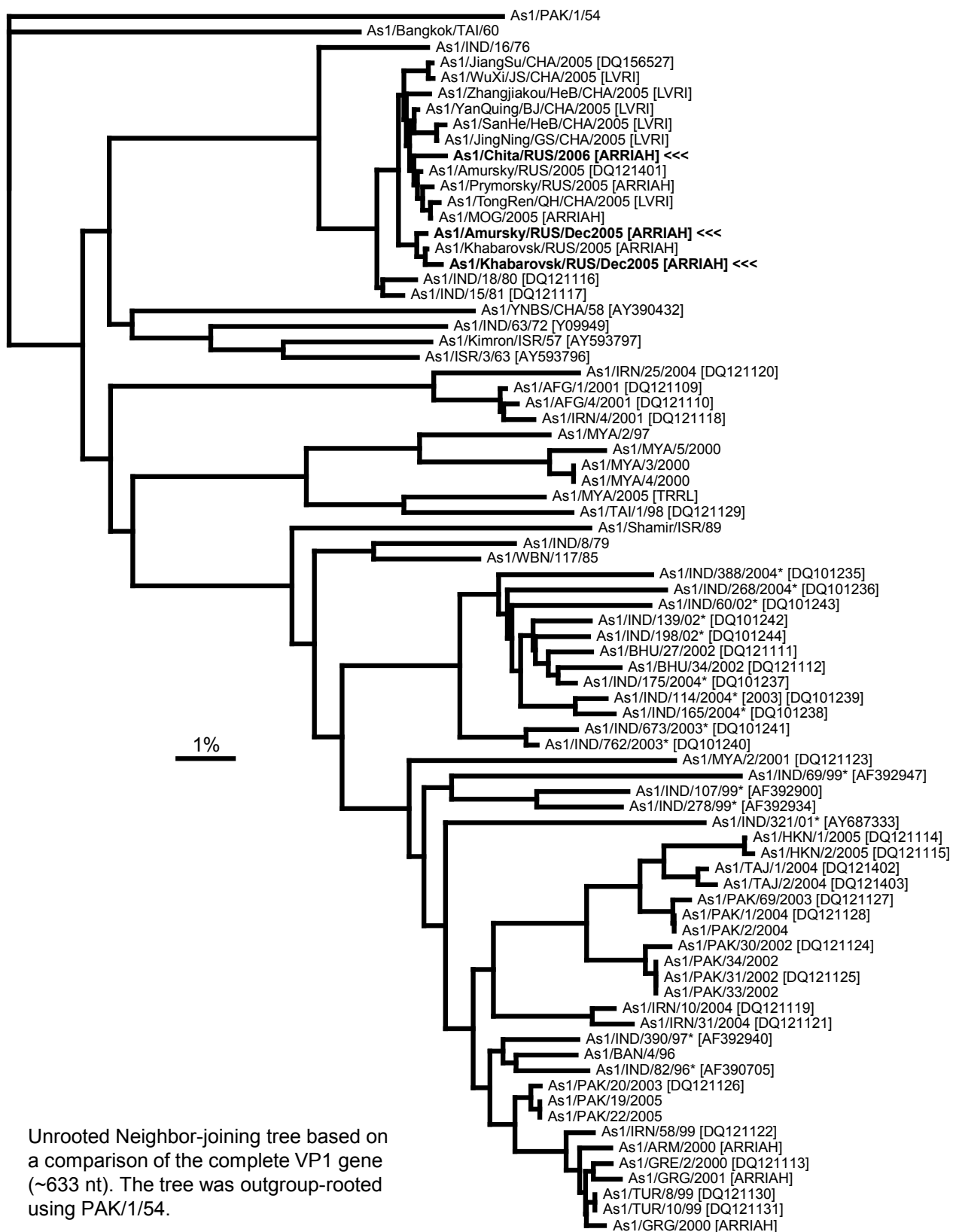
Pos.	Virus name	Filename	No. nt compared	No. nt matched	No. of ambiguities	% Identity	% Difference
1	As1/Kimron/ISR/57 [AY593797]	ISR57KIM	633	567	0	89.57	10.43
2	As1/IND/63/72 [Y09949]	IND72B63	630	557	0	88.41	11.59
3	As1/YNBS/CHA/58 [AY390432]	CHA58-AA	633	546	0	86.26	13.74
4	As1/IND/WBN/117/85* [AY687334]	IND85-AA	633	544	0	85.94	14.06
5	As1/IND/8/79	IND79-08	633	544	0	85.94	14.06
6	As1/Shamir/ISR/89	ISR89--A	633	542	0	85.62	14.38
7	As1/PAK/1/54	PAK54-01	630	534	0	84.76	15.24
8	As1/TAI/85	TAI85-AA	633	534	0	84.36	15.64
9	As1/CAM/9/80	CAM80-09	633	528	0	83.41	16.59

nt, nucleotides

\*, not a WRLFMD reference number

Serotype: ASIA1		Report date: 31/01/2006					
WRL Ref No: Chita/RUS/2006							
Sender Ref: Chita/RUS/2006		Topotype: none defined					
Date collected: 12/01/2006		Genotype/strain: none designated					
Date received by WRLFMD: 31/01/2006 (sequence only)		Sequence filename: RUS06-AA.SEQ					
Species: Cattle		Date sequence last updated: 31/01/2006					
Material used: not known		Total no. of comparisons: 422					
Region sequenced: VP1		Min. no. of nt for comparison: 300					
RT-PCR primers: not known		Total turn-around time: 1 day					
No. of Nt determined: 633		Sequencing time: n/a					
No. of ambiguities: 0							
Gene length: 633							
Comments: Complete VP1 sequence received from Alexey Scherbakov (FGI ARRIAH)							
<b>Ten Most Closely Related Viruses</b>							
Pos.	Virus name	Filename	No. nt compared	No. nt matched	No. of ambiguities	% Identity	% Difference
1	As1/Amursky/RUS/2005 [DQ121401]	RUS05-AA	633	628	0	99.21	0.79
2	As1/MOG/2005 [ARRIAH]	MOG05-AA	633	628	0	99.21	0.79
3	As1/YanQuing/BJ/CHA/2005 [LVRI]	CHA05-AC	633	628	0	99.21	0.79
4	As1/Prymorsky/RUS/2005 [ARRIAH]	RUS05-AC	633	628	0	99.21	0.79
5	As1/TongRen/QH/CHA/2005 [LVRI]	CHA05-AG	633	627	0	99.05	0.95
6	As1/Khabarovsk/RUS/2005 [ARRIAH]	RUS05-AB	633	626	0	98.89	1.11
7	As1/Amursky/RUS/Dec2005 [ARRIAH]	RUS05-AE	633	626	0	98.89	1.11
8	As1/WuXi/JS/CHA/2005 [LVRI]	CHA05-AB	633	625	0	98.74	1.26
9	As1/JingNing/GS/CHA/2005 [LVRI]	CHA05-AF	633	625	0	98.74	1.26
10	As1/Zhangjiakou/HeB/CHA/2005 [LVRI]	CHA05-AE	633	625	0	98.74	1.26
<b>Relationships to Reference Virus Strains</b>							
Pos.	Virus name	Filename	No. nt compared	No. nt matched	No. of ambiguities	% Identity	% Difference
1	As1/Kimron/ISR/57 [AY593797]	ISR57KIM	633	564	0	89.1	10.9
2	As1/IND/63/72 [Y09949]	IND72B63	630	558	0	88.57	11.43
3	As1/IND/8/79	IND79-08	633	545	0	86.1	13.9
4	As1/YNBS/CHA/58 [AY390432]	CHA58-AA	633	545	0	86.1	13.9
5	As1/IND/WBN/117/85* [AY687334]	IND85-AA	633	543	0	85.78	14.22
6	As1/Shamir/ISR/89	ISR89--A	633	541	0	85.47	14.53
7	As1/PAK/1/54	PAK54-01	630	535	0	84.92	15.08
8	As1/TAI/85 vs	TAI85-AA	633	534	0	84.36	15.64
9	As1/CAM/9/80	CAM80-09	633	526	0	83.1	16.9
nt, nucleotides							
*, not a WRLFMD reference number							

# Report on FMDV Asia 1 the Russian Federation in 2005 and 2006



Unrooted Neighbor-joining tree based on a comparison of the complete VP1 gene (~633 nt). The tree was outgroup-rooted using PAK/1/54.

\* Not a WRLFMD reference number.