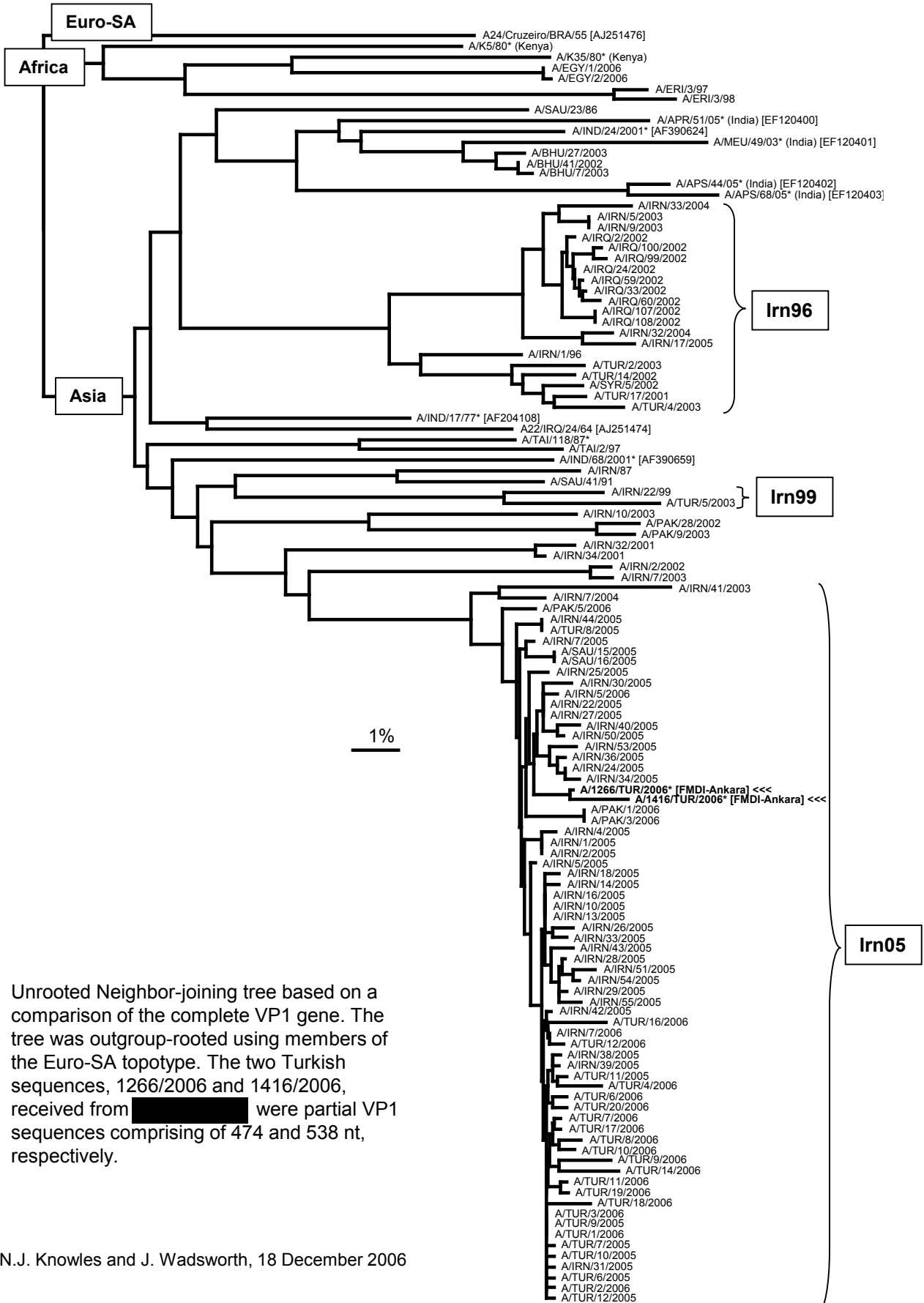


# Report on FMDV A sequences from Turkey in 2006



Unrooted Neighbor-joining tree based on a comparison of the complete VP1 gene. The tree was outgroup-rooted using members of the Euro-SA topotype. The two Turkish sequences, 1266/2006 and 1416/2006, received from [redacted] were partial VP1 sequences comprising of 474 and 538 nt, respectively.