

FAO World Reference Laboratory for Foot-and-Mouth Disease (WRLFMD)

Genotyping Report

FMDV serotype: A
Country: Algeria
Year: 2017
Batch: WRLMEG/2017/00028
No. of sequences: 5
Report date: 8th April 2017
Report generated by: Nick Knowles
Report checked by: Don King



Copyright © 2017 The Pirbright Institute, Ash Road, Pirbright, Woking GU24 0NF, United Kingdom.

www: <http://www.wrlfmd.org/>

email: reporting@pirbright.ac.uk

The contents of this report should not be reproduced without permission.

Virus sample name:	ALG/IZSLER/99572/1/2017
Sender reference:	99572/1 (6437)
Location of origin:	Ouled Souid, Zemmoura, Relizane
Country of origin:	Algeria
Date of collection:	24/03/2017
Host species:	cattle
Serotype:	A
Topotype:	AFRICA
Lineage:	G-IV
Sublineage:	
Sequence length:	633
Ambiguities:	0
Material submitted for sequencing:	epithial susp
Harvest date of material:	n/a
Primers:	A-1C562F/EUR-2B52R; A-1C612F/EUR-2B52R
Received for sequencing:	n/a
Created:	08/04/2017
Last updated:	08/04/2017
VIBASys IDs: sample 32373, genome 32374, sequence viba_32375, sequencing info 32376	

Most Closely Related Sequences

sequence	virus name	Host	% Id.	# Ambig.	serotype	topotype	lineage	sublineage
viba_32383	ALG/IZSLER/99572/3/2017	cattle	100.0	0	A	AFRICA	G-IV	
viba_32379	ALG/IZSLER/99572/2/2017	cattle	100.0	0	A	AFRICA	G-IV	
viba_32391	ALG/IZSLER/99572/5/2017	cattle	99.8	0	A	AFRICA	G-IV	
viba_32387	ALG/IZSLER/99572/4/2017	cattle	98.9	0	A	AFRICA	G-IV	
viba_32083	NIG/01/15	bovine	98.4	0	A	AFRICA	G-IV	
viba_32099	NIG/06/15	bovine	98.4	0	A	AFRICA	G-IV	
viba_32095	NIG/05/15	bovine	98.4	0	A	AFRICA	G-IV	
viba_32103	NIG/07/15	bovine	98.4	0	A	AFRICA	G-IV	
viba_32091	NIG/04/15	bovine	98.3	0	A	AFRICA	G-IV	
viba_32107	NIG/10/15	bovine	98.3	0	A	AFRICA	G-IV	

Most Closely Related Prototype Sequences

see http://www.wrlfmd.org/fmd_genotyping/prototypes.htm

sequence	virus name	Host	% Id.	# Ambig.	serotype	topotype	lineage	sublineage
viba_178	SUD/3/77		85.8	0	A	AFRICA	G-IV	
viba_173	UGA/13/66	bovine	83.6	0	A	AFRICA	G-VII	
viba_347	KEN/42/66		83.3	0	A	AFRICA	G-I	
viba_609	GHA/16/73	bovine	81.8	0	A	AFRICA	G-VI	
viba_785	KEN/3/64		81.7	0	A	AFRICA	G-III	
viba_435	Allier/FRA/60		81.6	0	A	EURO-SA	A5	
viba_535	NGR/2/73	bovine	81.6	0	A	AFRICA	G-V	
viba_688	EGY/1/72	bovine	81.4	0	A	AFRICA	G-II	
viba_699	UKG/119/32		80.0	0	A	EURO-SA	A12	
viba_625	TAI/2/97		79.7	0	A	ASIA	Sea-97	

Virus sample name:	ALG/IZSLER/99572/2/2017
Sender reference:	99572/2 (6837)
Location of origin:	Ouled Souid, Zemmoura, Relizane
Country of origin:	Algeria
Date of collection:	24/03/2017
Host species:	cattle
Serotype:	A
Topotype:	AFRICA
Lineage:	G-IV
Sublineage:	
Sequence length:	633
Ambiguities:	0
Material submitted for sequencing:	epithial susp
Harvest date of material:	n/a
Primers:	A-1C562F/EUR-2B52R; A-1C612F/EUR-2B52R
Received for sequencing:	n/a
Created:	08/04/2017
Last updated:	08/04/2017
VIBASys IDs: sample 32377, genome 32378, sequence viba_32379, sequencing info 32380	

Most Closely Related Sequences

sequence	virus name	Host	% Id.	# Ambig.	serotype	topotype	lineage	sublineage
viba_32383	ALG/IZSLER/99572/3/2017	cattle	100.0	0	A	AFRICA	G-IV	
viba_32375	ALG/IZSLER/99572/1/2017	cattle	100.0	0	A	AFRICA	G-IV	
viba_32391	ALG/IZSLER/99572/5/2017	cattle	99.8	0	A	AFRICA	G-IV	
viba_32387	ALG/IZSLER/99572/4/2017	cattle	98.9	0	A	AFRICA	G-IV	
viba_32083	NIG/01/15	bovine	98.4	0	A	AFRICA	G-IV	
viba_32099	NIG/06/15	bovine	98.4	0	A	AFRICA	G-IV	
viba_32095	NIG/05/15	bovine	98.4	0	A	AFRICA	G-IV	
viba_32103	NIG/07/15	bovine	98.4	0	A	AFRICA	G-IV	
viba_32091	NIG/04/15	bovine	98.3	0	A	AFRICA	G-IV	
viba_32107	NIG/10/15	bovine	98.3	0	A	AFRICA	G-IV	

Most Closely Related Prototype Sequences

see http://www.wrlfmd.org/fmd_genotyping/prototypes.htm

sequence	virus name	Host	% Id.	# Ambig.	serotype	topotype	lineage	sublineage
viba_178	SUD/3/77		85.8	0	A	AFRICA	G-IV	
viba_173	UGA/13/66	bovine	83.6	0	A	AFRICA	G-VII	
viba_347	KEN/42/66		83.3	0	A	AFRICA	G-I	
viba_609	GHA/16/73	bovine	81.8	0	A	AFRICA	G-VI	
viba_785	KEN/3/64		81.7	0	A	AFRICA	G-III	
viba_435	Allier/FRA/60		81.6	0	A	EURO-SA	A5	
viba_535	NGR/2/73	bovine	81.6	0	A	AFRICA	G-V	
viba_688	EGY/1/72	bovine	81.4	0	A	AFRICA	G-II	
viba_699	UKG/119/32		80.0	0	A	EURO-SA	A12	
viba_625	TAI/2/97		79.7	0	A	ASIA	Sea-97	

Virus sample name:	ALG/IZSLER/99572/3/2017
Sender reference:	99572/3 (5279)
Location of origin:	Ouled Souid, Zemmoura, Relizane
Country of origin:	Algeria
Date of collection:	24/03/2017
Host species:	cattle
Serotype:	A
Topotype:	AFRICA
Lineage:	G-IV
Sublineage:	
Sequence length:	633
Ambiguities:	0
Material submitted for sequencing:	epithial susp
Harvest date of material:	n/a
Primers:	A-1C562F/EUR-2B52R; A-1C612F/EUR-2B52R
Received for sequencing:	n/a
Created:	08/04/2017
Last updated:	08/04/2017
VIBASys IDs: sample 32381, genome 32382, sequence viba_32383, sequencing info 32384	

Most Closely Related Sequences

sequence	virus name	Host	% Id.	# Ambig.	serotype	topotype	lineage	sublineage
viba_32375	ALG/IZSLER/99572/1/2017	cattle	100.0	0	A	AFRICA	G-IV	
viba_32379	ALG/IZSLER/99572/2/2017	cattle	100.0	0	A	AFRICA	G-IV	
viba_32391	ALG/IZSLER/99572/5/2017	cattle	99.8	0	A	AFRICA	G-IV	
viba_32387	ALG/IZSLER/99572/4/2017	cattle	98.9	0	A	AFRICA	G-IV	
viba_32083	NIG/01/15	bovine	98.4	0	A	AFRICA	G-IV	
viba_32099	NIG/06/15	bovine	98.4	0	A	AFRICA	G-IV	
viba_32095	NIG/05/15	bovine	98.4	0	A	AFRICA	G-IV	
viba_32103	NIG/07/15	bovine	98.4	0	A	AFRICA	G-IV	
viba_32091	NIG/04/15	bovine	98.3	0	A	AFRICA	G-IV	
viba_32107	NIG/10/15	bovine	98.3	0	A	AFRICA	G-IV	

Most Closely Related Prototype Sequences

see http://www.wrlfmd.org/fmd_genotyping/prototypes.htm

sequence	virus name	Host	% Id.	# Ambig.	serotype	topotype	lineage	sublineage
viba_178	SUD/3/77		85.8	0	A	AFRICA	G-IV	
viba_173	UGA/13/66	bovine	83.6	0	A	AFRICA	G-VII	
viba_347	KEN/42/66		83.3	0	A	AFRICA	G-I	
viba_609	GHA/16/73	bovine	81.8	0	A	AFRICA	G-VI	
viba_785	KEN/3/64		81.7	0	A	AFRICA	G-III	
viba_435	Allier/FRA/60		81.6	0	A	EURO-SA	A5	
viba_535	NGR/2/73	bovine	81.6	0	A	AFRICA	G-V	
viba_688	EGY/1/72	bovine	81.4	0	A	AFRICA	G-II	
viba_699	UKG/119/32		80.0	0	A	EURO-SA	A12	
viba_625	TAI/2/97		79.7	0	A	ASIA	Sea-97	

Virus sample name:	ALG/IZSLER/99572/4/2017
Sender reference:	99572/4 (26BV11032)
Location of origin:	Boussena, Ouzna, Medea
Country of origin:	Algeria
Date of collection:	02/04/2017
Host species:	cattle
Serotype:	A
Topotype:	AFRICA
Lineage:	G-IV
Sublineage:	
Sequence length:	627
Ambiguities:	0
Material submitted for sequencing:	epithial susp
Harvest date of material:	n/a
Primers:	A-1C562F/EUR-2B52R; A-1C612F/EUR-2B52R
Received for sequencing:	n/a
Created:	08/04/2017
Last updated:	08/04/2017
VIBASys IDs: sample 32385, genome 32386, sequence viba_32387, sequencing info 32388	

Most Closely Related Sequences

sequence	virus name	Host	% Id.	# Ambig.	serotype	topotype	lineage	sublineage
viba_32391	ALG/IZSLER/99572/5/2017	cattle	99.1	0	A	AFRICA	G-IV	
viba_32383	ALG/IZSLER/99572/3/2017	cattle	98.9	0	A	AFRICA	G-IV	
viba_32375	ALG/IZSLER/99572/1/2017	cattle	98.9	0	A	AFRICA	G-IV	
viba_32379	ALG/IZSLER/99572/2/2017	cattle	98.9	0	A	AFRICA	G-IV	
viba_32083	NIG/01/15	bovine	97.3	0	A	AFRICA	G-IV	
viba_32099	NIG/06/15	bovine	97.3	0	A	AFRICA	G-IV	
viba_32095	NIG/05/15	bovine	97.3	0	A	AFRICA	G-IV	
viba_32103	NIG/07/15	bovine	97.3	0	A	AFRICA	G-IV	
viba_32091	NIG/04/15	bovine	97.2	0	A	AFRICA	G-IV	
viba_32107	NIG/10/15	bovine	97.2	0	A	AFRICA	G-IV	

Most Closely Related Prototype Sequences

see http://www.wrlfmd.org/fmd_genotyping/prototypes.htm

sequence	virus name	Host	% Id.	# Ambig.	serotype	topotype	lineage	sublineage
viba_178	SUD/3/77		85.0	0	A	AFRICA	G-IV	
viba_347	KEN/42/66		82.6	0	A	AFRICA	G-I	
viba_173	UGA/13/66	bovine	82.6	0	A	AFRICA	G-VII	
viba_609	GHA/16/73	bovine	81.0	0	A	AFRICA	G-VI	
viba_785	KEN/3/64		81.0	0	A	AFRICA	G-III	
viba_435	Allier/FRA/60		80.9	0	A	EURO-SA	A5	
viba_535	NGR/2/73	bovine	80.9	0	A	AFRICA	G-V	
viba_688	EGY/1/72	bovine	80.2	0	A	AFRICA	G-II	
viba_699	UKG/119/32		79.9	0	A	EURO-SA	A12	
viba_589	Bangkok/TAI/60		79.7	0	A	ASIA	A15	

Virus sample name:	ALG/IZSLER/99572/5/2017
Sender reference:	99572/5 (26BV11034)
Location of origin:	Boussena, Ouzna, Medea
Country of origin:	Algeria
Date of collection:	02/04/2017
Host species:	cattle
Serotype:	A
Topotype:	AFRICA
Lineage:	G-IV
Sublineage:	
Sequence length:	633
Ambiguities:	0
Material submitted for sequencing:	epithial susp
Harvest date of material:	n/a
Primers:	A-1C562F/EUR-2B52R; A-1C612F/EUR-2B52R
Received for sequencing:	n/a
Created:	08/04/2017
Last updated:	08/04/2017
VIBASys IDs: sample 32389, genome 32390, sequence viba_32391, sequencing info 32392	

Most Closely Related Sequences

sequence	virus name	Host	% Id.	# Ambig.	serotype	topotype	lineage	sublineage
viba_32383	ALG/IZSLER/99572/3/2017	cattle	99.8	0	A	AFRICA	G-IV	
viba_32375	ALG/IZSLER/99572/1/2017	cattle	99.8	0	A	AFRICA	G-IV	
viba_32379	ALG/IZSLER/99572/2/2017	cattle	99.8	0	A	AFRICA	G-IV	
viba_32387	ALG/IZSLER/99572/4/2017	cattle	99.1	0	A	AFRICA	G-IV	
viba_32083	NIG/01/15	bovine	98.3	0	A	AFRICA	G-IV	
viba_32099	NIG/06/15	bovine	98.3	0	A	AFRICA	G-IV	
viba_32095	NIG/05/15	bovine	98.3	0	A	AFRICA	G-IV	
viba_32103	NIG/07/15	bovine	98.3	0	A	AFRICA	G-IV	
viba_32091	NIG/04/15	bovine	98.1	0	A	AFRICA	G-IV	
viba_32107	NIG/10/15	bovine	98.1	0	A	AFRICA	G-IV	

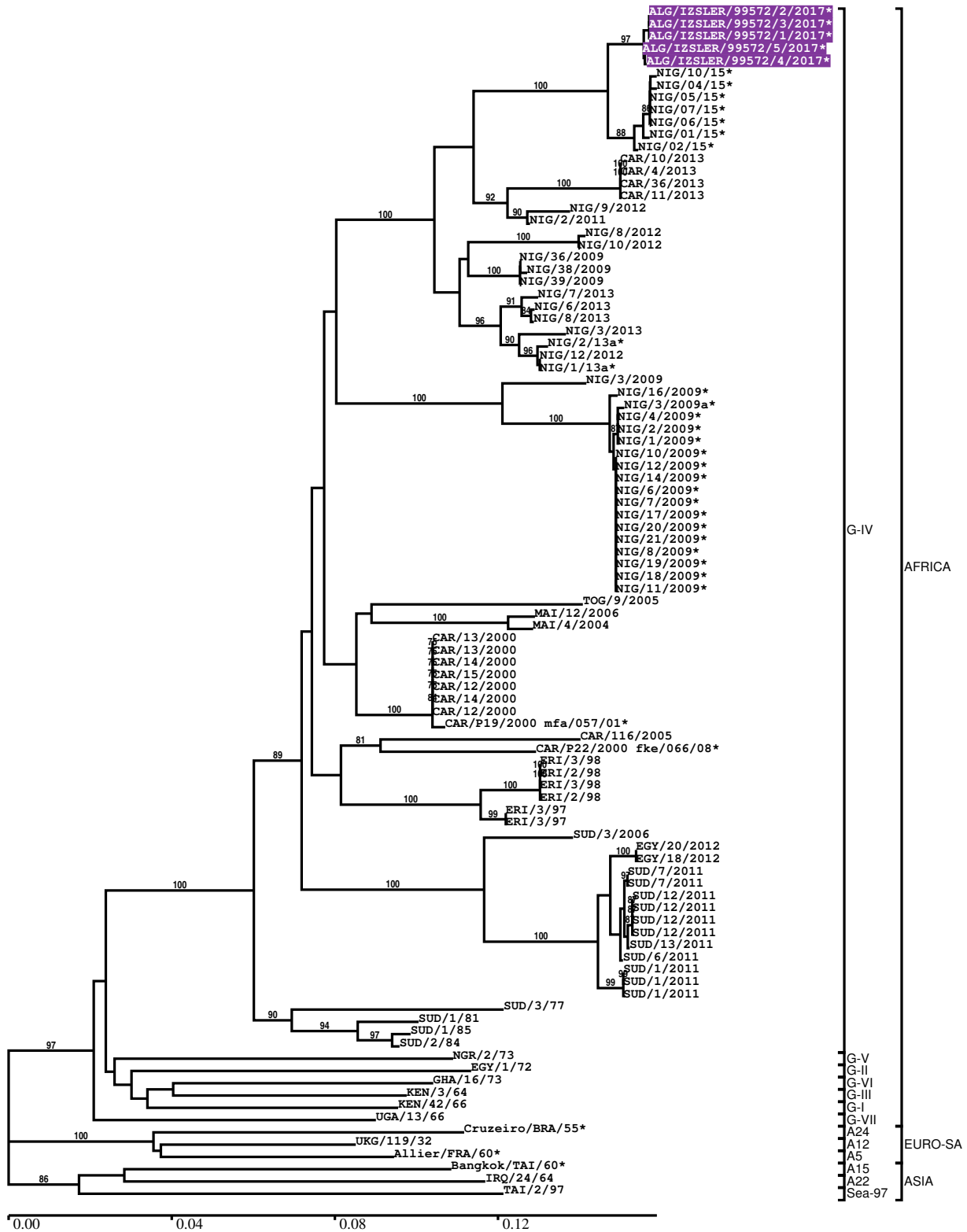
Most Closely Related Prototype Sequences

see http://www.wrlfmd.org/fmd_genotyping/prototypes.htm

sequence	virus name	Host	% Id.	# Ambig.	serotype	topotype	lineage	sublineage
viba_178	SUD/3/77		85.9	0	A	AFRICA	G-IV	
viba_347	KEN/42/66		83.4	0	A	AFRICA	G-I	
viba_173	UGA/13/66	bovine	83.4	0	A	AFRICA	G-VII	
viba_609	GHA/16/73	bovine	81.9	0	A	AFRICA	G-VI	
viba_785	KEN/3/64		81.8	0	A	AFRICA	G-III	
viba_435	Allier/FRA/60		81.7	0	A	EURO-SA	A5	
viba_535	NGR/2/73	bovine	81.7	0	A	AFRICA	G-V	
viba_688	EGY/1/72	bovine	81.5	0	A	AFRICA	G-II	
viba_699	UKG/119/32		80.7	0	A	EURO-SA	A12	
viba_625	TAI/2/97		79.7	0	A	ASIA	Sea-97	

Report on FMDV A in Algeria in 2017

Batch: WRLMEG/2017/00028



*, not a WRLFMD Reference Number

Analysis Parameters

VP1 subsequence extractor:	vp1_A
Query sequence set:	WRLMEG/2017/00028-Algeria-A (5 sequences)
Sequence database set:	allseqs_A (1619 sequences)
Prototype sequence set:	!prototypes_A (34 sequences)
Number of related sequences reported:	10
Minimal VP1 subsequence match length	600
Sequence alignment method:	muscle (default parameters)
Sequence alignment length:	630
Phylogeny reconstruction method:	fdnadist, fneighbor
Number of bootstrap samples:	1000
Random seed for bootstrapping:	1
Displaying bootstrap values above:	70.0%
Number of sequences in tree capped at:	100
Number of prototype sequences in tree:	11
VIBASys version:	master-1.1.0-17-gf69a4d1

Sequences in the Phylogenetic Tree

All sequences in the tree are in taxonomic group FMDV/A

label	accession	host(s)	lab	country	taxonomic information
ALG/IZSLER/99572/2/2017*	n/a	cattle	IZSLER	Algeria	AFRICA/G-IV
ALG/IZSLER/99572/3/2017*	n/a	cattle	IZSLER	Algeria	AFRICA/G-IV
ALG/IZSLER/99572/1/2017*	n/a	cattle	IZSLER	Algeria	AFRICA/G-IV
ALG/IZSLER/99572/5/2017*	n/a	cattle	IZSLER	Algeria	AFRICA/G-IV
ALG/IZSLER/99572/4/2017*	n/a	cattle	IZSLER	Algeria	AFRICA/G-IV
NIG/10/15*	KY655486	bovine	CODA-CERVA	Nigeria	AFRICA/G-IV
NIG/04/15*	KY655487	bovine	CODA-CERVA	Nigeria	AFRICA/G-IV
NIG/05/15*	KY655488	bovine	CODA-CERVA	Nigeria	AFRICA/G-IV
NIG/07/15*	KY655490	bovine	CODA-CERVA	Nigeria	AFRICA/G-IV
NIG/06/15*	KY655489	bovine	CODA-CERVA	Nigeria	AFRICA/G-IV
NIG/01/15*	KY655491	bovine	CODA-CERVA	Nigeria	AFRICA/G-IV
NIG/02/15*	KY655492	bovine	CODA-CERVA	Nigeria	AFRICA/G-IV
CAR/10/2013	n/a	cattle	WRLFMD	Cameroon	AFRICA/G-IV
CAR/4/2013	n/a	cattle	WRLFMD	Cameroon	AFRICA/G-IV
CAR/36/2013	n/a	cattle	WRLFMD	Cameroon	AFRICA/G-IV
CAR/11/2013	n/a	cattle	WRLFMD	Cameroon	AFRICA/G-IV
NIG/9/2012	KX258055	bovine	WRLFMD	Nigeria	AFRICA/G-IV
NIG/2/2011	KX258053	bovine	WRLFMD	Nigeria	AFRICA/G-IV
NIG/8/2012	KX258054	bovine	WRLFMD	Nigeria	AFRICA/G-IV
NIG/10/2012	KX258056	bovine	WRLFMD	Nigeria	AFRICA/G-IV
NIG/36/2009	KX258050	cattle	WRLFMD	Nigeria	AFRICA/G-IV
NIG/38/2009	KX258051	cattle	WRLFMD	Nigeria	AFRICA/G-IV
NIG/39/2009	KX258052	cattle	WRLFMD	Nigeria	AFRICA/G-IV
NIG/7/2013	KX258060	bovine	WRLFMD	Nigeria	AFRICA/G-IV
NIG/6/2013	KX258059	bovine	WRLFMD	Nigeria	AFRICA/G-IV
NIG/8/2013	KX258061	bovine	WRLFMD	Nigeria	AFRICA/G-IV
NIG/3/2013	KX258058	bovine	WRLFMD	Nigeria	AFRICA/G-IV
NIG/2/13a*	KY584071	bovine	CODA-CERVA	Nigeria	AFRICA/G-IV
NIG/12/2012	KX258057	bovine	WRLFMD	Nigeria	AFRICA/G-IV
NIG/1/13a*	KY584070	bovine	CODA-CERVA	Nigeria	AFRICA/G-IV
NIG/3/2009	KX258049	cattle	WRLFMD	Nigeria	AFRICA/G-IV
NIG/16/2009*	JN680724	cattle	PIADC	Nigeria	AFRICA/G-IV
NIG/3/2009a*	JN680711	cattle	PIADC	Nigeria	AFRICA/G-IV
NIG/4/2009*	JN680712	cattle	PIADC	Nigeria	AFRICA/G-IV
NIG/2/2009*	JN680710	cattle	PIADC	Nigeria	AFRICA/G-IV
NIG/1/2009*	JN680709	cattle	PIADC	Nigeria	AFRICA/G-IV

continued on next page

label	accession	host(s)	lab	country	taxonomic information
NIG/10/2009*	JN680718	cattle	PIADC	Nigeria	AFRICA/G-IV
NIG/12/2009*	JN680720	cattle	PIADC	Nigeria	AFRICA/G-IV
NIG/14/2009*	JN680722	cattle	PIADC	Nigeria	AFRICA/G-IV
NIG/6/2009*	JN680714	cattle	PIADC	Nigeria	AFRICA/G-IV
NIG/7/2009*	JN680715	cattle	PIADC	Nigeria	AFRICA/G-IV
NIG/17/2009*	JN680725	cattle	PIADC	Nigeria	AFRICA/G-IV
NIG/20/2009*	JN680728	cattle	PIADC	Nigeria	AFRICA/G-IV
NIG/21/2009*	JN680729	cattle	PIADC	Nigeria	AFRICA/G-IV
NIG/8/2009*	JN680716	cattle	PIADC	Nigeria	AFRICA/G-IV
NIG/19/2009*	JN680727	cattle	PIADC	Nigeria	AFRICA/G-IV
NIG/18/2009*	JN680726	cattle	PIADC	Nigeria	AFRICA/G-IV
NIG/11/2009*	JN680719	cattle	PIADC	Nigeria	AFRICA/G-IV
TOG/9/2005	KX258062	cattle	n/a	Togo	AFRICA/G-IV
MAI/12/2006	KX258048	n/a	WRLFMD	Mali	AFRICA/G-IV
MAI/4/2004	KX258047	cattle	n/a	Mali	AFRICA/G-IV
CAR/13/2000	n/a	n/a	WRLFMD	Cameroon	AFRICA/G-IV
CAR/13/2000	KX258131	n/a	WRLFMD	Cameroon	AFRICA/G-IV
CAR/14/2000	n/a	n/a	WRLFMD	Cameroon	AFRICA/G-IV
CAR/15/2000	EF208755	n/a	WRLFMD	Cameroon	AFRICA/G-IV
CAR/12/2000	n/a	n/a	WRLFMD	Cameroon	AFRICA/G-IV
CAR/14/2000	KX258132	n/a	WRLFMD	Cameroon	AFRICA/G-IV
CAR/12/2000	KX258130	n/a	WRLFMD	Cameroon	AFRICA/G-IV
CAR/P19/2000 mfa/057/01*	n/a	n/a	WRLFMD	Cameroon	AFRICA/G-IV
CAR/116/2005	KX258135	cattle	WRLFMD	Cameroon	AFRICA/G-IV
CAR/P22/2000 fke/066/08*	n/a	n/a	WRLFMD	Cameroon	AFRICA/G-IV
ERI/3/98	KX258045	n/a	WRLFMD	Eritrea	AFRICA/G-IV
ERI/2/98	KX258044	n/a	WRLFMD	Eritrea	AFRICA/G-IV
ERI/3/98	n/a	n/a	WRLFMD	Eritrea	AFRICA/G-IV
ERI/2/98	n/a	n/a	WRLFMD	Eritrea	AFRICA/G-IV
ERI/3/97	n/a	n/a	WRLFMD	Eritrea	AFRICA/G-IV
ERI/3/97	KX258043	n/a	WRLFMD	Eritrea	AFRICA/G-IV
SUD/3/2006	GU566070	cattle	WRLFMD	Sudan	AFRICA/G-IV
EGY/20/2012	n/a	cattle	WRLFMD	Egypt	AFRICA/G-IV
EGY/18/2012	n/a	cattle	WRLFMD	Egypt	AFRICA/G-IV
SUD/7/2011	n/a	cattle	WRLFMD	Sudan	AFRICA/G-IV
SUD/7/2011	n/a	cattle	WRLFMD	Sudan	AFRICA/G-IV
SUD/12/2011	n/a	cattle	WRLFMD	Sudan	AFRICA/G-IV
SUD/12/2011	n/a	cattle	WRLFMD	Sudan	AFRICA/G-IV
SUD/12/2011	n/a	cattle	WRLFMD	Sudan	AFRICA/G-IV
SUD/12/2011	n/a	cattle	WRLFMD	Sudan	AFRICA/G-IV
SUD/13/2011	n/a	cattle	WRLFMD	Sudan	AFRICA/G-IV
SUD/6/2011	n/a	cattle	WRLFMD	Sudan	AFRICA/G-IV
SUD/1/2011	n/a	cattle	WRLFMD	Sudan	AFRICA/G-IV
SUD/1/2011	n/a	cattle	WRLFMD	Sudan	AFRICA/G-IV
SUD/1/2011	n/a	cattle	WRLFMD	Sudan	AFRICA/G-IV
SUD/3/77	GU566064	n/a	WRLFMD	Sudan	AFRICA/G-IV
SUD/1/81	GU566065	n/a	WRLFMD	Sudan	AFRICA/G-IV
SUD/1/85	GU566068	n/a	WRLFMD	Sudan	AFRICA/G-IV
SUD/2/84	GU566067	n/a	WRLFMD	Sudan	AFRICA/G-IV
NGR/2/73	KF561704	bovine	WRLFMD	Niger	AFRICA/G-V
EGY/1/72	EF208756	bovine	WRLFMD	Egypt	AFRICA/G-II
GHA/16/73	KF561698	bovine	WRLFMD	Ghana	AFRICA/G-VI
KEN/3/64	AY593761	n/a	PIADC	Kenya	AFRICA/G-III
KEN/42/66	KF561699	n/a	WRLFMD	Kenya	AFRICA/G-I
UGA/13/66	KF561705	bovine	WRLFMD	Uganda	AFRICA/G-VII
Cruzeiro/BRA/55*	AY593768	bovine	PIADC	Brazil	EURO-SA/A24
UKG/119/32	M10975	n/a	PIADC	United Kingdom	EURO-SA/A12
Allier/FRA/60*	AY593780	n/a	PIADC	France	EURO-SA/A5
Bangkok/TAI/60*	AY593755	n/a	PIADC	Thailand	ASIA/A15
IRQ/24/64	AY593763	bovine	PIADC	Iraq	ASIA/A22
TAI/2/97	EF208778	n/a	WRLFMD	Thailand	ASIA/Sea-97

*, not a WRLFMD Reference Number
n/a, not available