

FAO World Reference Laboratory for Foot-and-Mouth Disease (WRLFMD)

Genotyping Report

FMDV serotype: O
Country: Russia
Year: 2020
Batch: WRLMEG/2020/00009
No. of sequences: 1
Report date: 4th February 2020
Report generated by: Nick Knowles
Report checked by: Antonello Di Nardo

This report is prepared on behalf of the FGBI “ARRIAH” (Russian Federation) and covers a VP1 sequence submitted to the WRLFMD on 04/02/2020.



Copyright ©2020 The Pirbright Institute, Ash Road, Pirbright, Woking GU24 0NF, United Kingdom.

www: <http://www.wrlfmd.org/>

email: reporting@pirbright.ac.uk

The contents of this report should not be reproduced without permission.

Virus sample name:	Zabaikalskiy/RUS/2020
Sender reference:	O/Zabaikalskiy/RUS/2020
Location of origin:	Novotsurukhajtuj, Priargunsky, Zabaikalskiy Kray
Country of origin:	Russia
Date of collection:	27/01/2020
Host species:	cattle
Serotype:	O
Topotype:	SEA
Lineage:	Mya-98
Sublineage:	
Sequence length:	633
Ambiguities:	0
Material submitted for sequencing:	n/a
Harvest date of material:	n/a
Primers:	n/a
Received for sequencing:	n/a
Created:	04/02/2020
Last updated:	04/02/2020
VIBASys IDs: sample 43974, genome 43975, sequence viba_43976, sequencing info 43977	

Most Closely Related Sequences

sequence	virus name	Host	% Id.	# Ambig.	serotype	topotype	lineage	sublineage
viba_26288	TAI/22/2015	water buffalo	97.2	0	O	SEA	Mya-98	
viba_31488	VIT/17/2016	cattle	97.0	0	O	SEA	Mya-98	
viba_31484	VIT/15/2016	water buffalo	97.0	0	O	SEA	Mya-98	
viba_25518	MYA/1/2015	bovine	97.0	0	O	SEA	Mya-98	
viba_30498	TAI/26/2016	cattle	97.0	0	O	SEA	Mya-98	
viba_36432	VIT/1/2017	water buffalo	96.8	0	O	SEA	Mya-98	
viba_36424	VIT/24/2016	bovine	96.8	0	O	SEA	Mya-98	
viba_33981	TAI/51/2016	cattle	96.8	0	O	SEA	Mya-98	
viba_33965	TAI/47/2016	cattle	96.8	0	O	SEA	Mya-98	
viba_33989	TAI/56/2016	cattle	96.7	0	O	SEA	Mya-98	

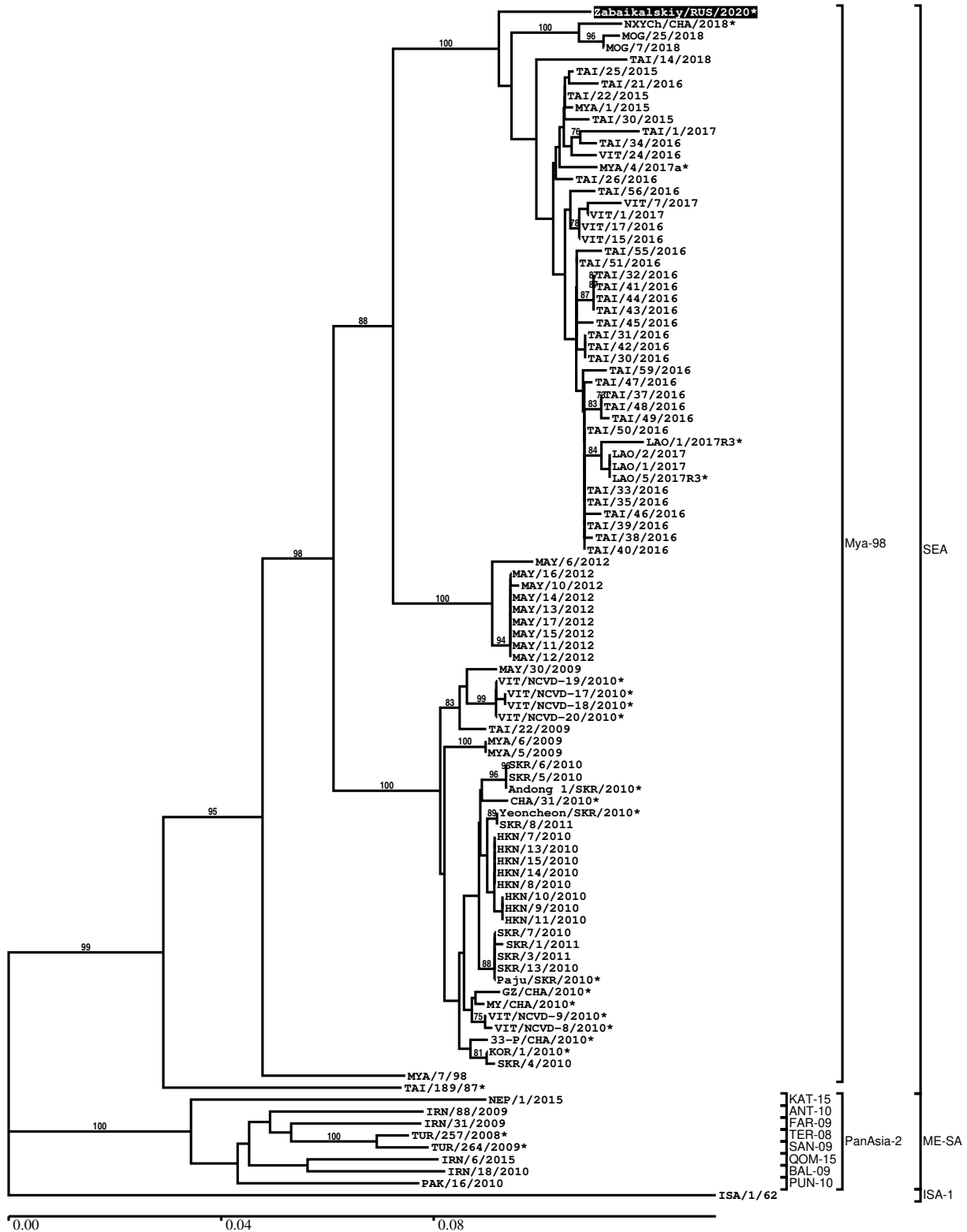
Most Closely Related Prototype Sequences

see <http://www.wrlfmd.org/fmdv-genome/fmd-prototype-strains>

sequence	virus name	Host	% Id.	# Ambig.	serotype	topotype	lineage	sublineage
viba_199	MYA/7/98	bovine	91.0	0	O	SEA	Mya-98	
viba_68	TAI/189/87	bovine	88.2	0	O	SEA		
viba_491	TUR/257/2008		84.2	0	O	ME-SA	PanAsia-2	TER-08
viba_719	IRN/88/2009		84.0	0	O	ME-SA	PanAsia-2	ANT-10
viba_766	IRN/31/2009	cattle	83.9	0	O	ME-SA	PanAsia-2	FAR-09
viba_505	TUR/264/2009		83.9	0	O	ME-SA	PanAsia-2	SAN-09
viba_850	NEP/1/2015	cattle	83.8	1	O	ME-SA	PanAsia-2	KAT-15
viba_860	IRN/6/2015	cattle	83.7	0	O	ME-SA	PanAsia-2	QOM-15
viba_666	IRN/18/2010	cattle	83.6	0	O	ME-SA	PanAsia-2	BAL-09
viba_354	PAK/16/2010	cattle	83.6	0	O	ME-SA	PanAsia-2	PUN-10

Report on FMDV O in Russia in 2020

Batch: WRLMEG/2020/00009



*, not a WRLFMD Reference Number

Analysis Parameters

VP1 subsequence extractor:	vp1_O
Query sequence set:	WRLMEG/2020/00009-Russia-O (1 sequences)
Sequence database set:	allseqs_O (4710 sequences)
Prototype sequence set:	!prototypes_O (49 sequences)
Number of related sequences reported:	10
Minimal VP1 subsequence match length	600
Sequence alignment method:	muscle (default parameters)
Sequence alignment length:	636
Phylogeny reconstruction method:	fdnadist, fneighbor
Number of bootstrap samples:	1000
Random seed for bootstrapping:	1
Displaying bootstrap values above:	70.0%
Number of sequences in tree capped at:	100
Number of prototype sequences in tree:	10
VIBASys version:	reflabs-1.1.2

Sequences in the Phylogenetic Tree

All sequences in the tree are in taxonomic group FMDV/O

label	accession	host(s)	lab	country	taxonomic information
Zabaikalskiy/RUS/2020*	n/a	cattle	ARRIAH	Russia	SEA/Mya-98
NXYCh/CHA/2018*	MH791315	cattle	LVRI	China	SEA/Mya-98
MOG/25/2018	n/a	cattle	WRLFMD	Mongolia	SEA/Mya-98
MOG/7/2018	n/a	cattle	WRLFMD	Mongolia	SEA/Mya-98
TAI/14/2018	n/a	cattle	WRLFMD	Thailand	SEA/Mya-98
TAI/25/2015	n/a	cattle	WRLFMD	Thailand	SEA/Mya-98
TAI/21/2016	n/a	cattle	WRLFMD	Thailand	SEA/Mya-98
TAI/22/2015	n/a	water buffalo	WRLFMD	Thailand	SEA/Mya-98
MYA/1/2015	n/a	bovine	WRLFMD	Myanmar	SEA/Mya-98
TAI/30/2015	n/a	cattle	WRLFMD	Thailand	SEA/Mya-98
TAI/1/2017	n/a	porcine	WRLFMD	Thailand	SEA/Mya-98
TAI/34/2016	n/a	cattle	WRLFMD	Thailand	SEA/Mya-98
VIT/24/2016	n/a	bovine	WRLFMD	Vietnam	SEA/Mya-98
MYA/4/2017a*	n/a	cattle	TRRL	Myanmar	SEA/Mya-98
TAI/26/2016	n/a	cattle	WRLFMD	Thailand	SEA/Mya-98
TAI/56/2016	n/a	cattle	WRLFMD	Thailand	SEA/Mya-98
VIT/7/2017	n/a	water buffalo	WRLFMD	Vietnam	SEA/Mya-98
VIT/1/2017	n/a	water buffalo	WRLFMD	Vietnam	SEA/Mya-98
VIT/17/2016	n/a	cattle	WRLFMD	Vietnam	SEA/Mya-98
VIT/15/2016	n/a	water buffalo	WRLFMD	Vietnam	SEA/Mya-98
TAI/55/2016	n/a	cattle	WRLFMD	Thailand	SEA/Mya-98
TAI/51/2016	n/a	cattle	WRLFMD	Thailand	SEA/Mya-98
TAI/32/2016	n/a	cattle	WRLFMD	Thailand	SEA/Mya-98
TAI/41/2016	n/a	cattle	WRLFMD	Thailand	SEA/Mya-98
TAI/44/2016	n/a	cattle	WRLFMD	Thailand	SEA/Mya-98
TAI/43/2016	n/a	cattle	WRLFMD	Thailand	SEA/Mya-98
TAI/45/2016	n/a	cattle	WRLFMD	Thailand	SEA/Mya-98
TAI/31/2016	n/a	cattle	WRLFMD	Thailand	SEA/Mya-98
TAI/42/2016	n/a	cattle	WRLFMD	Thailand	SEA/Mya-98
TAI/30/2016	n/a	cattle	WRLFMD	Thailand	SEA/Mya-98
TAI/59/2016	n/a	cattle	WRLFMD	Thailand	SEA/Mya-98
TAI/47/2016	n/a	cattle	WRLFMD	Thailand	SEA/Mya-98
TAI/37/2016	n/a	cattle	WRLFMD	Thailand	SEA/Mya-98
TAI/48/2016	n/a	cattle	WRLFMD	Thailand	SEA/Mya-98
TAI/49/2016	n/a	cattle	WRLFMD	Thailand	SEA/Mya-98
TAI/50/2016	n/a	cattle	WRLFMD	Thailand	SEA/Mya-98

continued on next page

label	accession	host(s)	lab	country	taxonomic information
LAO/1/2017R3*	n/a	n/a	TRRL	Laos	SEA/Mya-98
LAO/2/2017	n/a	cattle	WRLFMD	Laos	SEA/Mya-98
LAO/1/2017	n/a	cattle	WRLFMD	Laos	SEA/Mya-98
LAO/5/2017R3*	n/a	n/a	TRRL	Laos	SEA/Mya-98
TAI/33/2016	n/a	porcine	WRLFMD	Thailand	SEA/Mya-98
TAI/35/2016	n/a	cattle	WRLFMD	Thailand	SEA/Mya-98
TAI/46/2016	n/a	cattle	WRLFMD	Thailand	SEA/Mya-98
TAI/39/2016	n/a	cattle	WRLFMD	Thailand	SEA/Mya-98
TAI/38/2016	n/a	cattle	WRLFMD	Thailand	SEA/Mya-98
TAI/40/2016	n/a	cattle	WRLFMD	Thailand	SEA/Mya-98
MAY/6/2012	n/a	cattle	WRLFMD	Malaysia	SEA/Mya-98
MAY/16/2012	n/a	cattle	WRLFMD	Malaysia	SEA/Mya-98
MAY/10/2012	n/a	cattle	WRLFMD	Malaysia	SEA/Mya-98
MAY/14/2012	n/a	cattle	WRLFMD	Malaysia	SEA/Mya-98
MAY/13/2012	n/a	cattle	WRLFMD	Malaysia	SEA/Mya-98
MAY/17/2012	n/a	cattle	WRLFMD	Malaysia	SEA/Mya-98
MAY/15/2012	n/a	cattle	WRLFMD	Malaysia	SEA/Mya-98
MAY/11/2012	n/a	cattle	WRLFMD	Malaysia	SEA/Mya-98
MAY/12/2012	n/a	cattle	WRLFMD	Malaysia	SEA/Mya-98
MAY/30/2009	n/a	cattle	WRLFMD	Malaysia	SEA/Mya-98
VIT/NCVD-19/2010*	n/a	cattle	NVRQS	Vietnam	SEA/Mya-98
VIT/NCVD-17/2010*	n/a	cattle	NVRQS	Vietnam	SEA/Mya-98
VIT/NCVD-18/2010*	n/a	cattle	NVRQS	Vietnam	SEA/Mya-98
VIT/NCVD-20/2010*	n/a	cattle	NVRQS	Vietnam	SEA/Mya-98
TAI/22/2009	HQ116269	porcine	WRLFMD	Thailand	SEA/Mya-98
MYA/6/2009	HQ116229	cattle	WRLFMD	Myanmar	SEA/Mya-98
MYA/5/2009	HQ116228	cattle	WRLFMD	Myanmar	SEA/Mya-98
SKR/6/2010	n/a	porcine	WRLFMD	Republic of Korea (South Korea)	SEA/Mya-98
SKR/5/2010	JQ070321	porcine	WRLFMD	Republic of Korea (South Korea)	SEA/Mya-98
Andong 1/SKR/2010*	n/a	porcine	NVRQS	Republic of Korea (South Korea)	SEA/Mya-98
CHA/31/2010*	JF792356	porcine	LVRI	China	SEA/Mya-98
Yeoncheon/SKR/2010*	n/a	porcine	NVRQS	Republic of Korea (South Korea)	SEA/Mya-98
SKR/8/2011	n/a	cattle	WRLFMD	Republic of Korea (South Korea)	SEA/Mya-98
HKN/7/2010	JQ070303	porcine	WRLFMD	Hong Kong SAR	SEA/Mya-98
HKN/13/2010	n/a	porcine	WRLFMD	Hong Kong SAR	SEA/Mya-98
HKN/15/2010	n/a	porcine	WRLFMD	Hong Kong SAR	SEA/Mya-98
HKN/14/2010	n/a	porcine	WRLFMD	Hong Kong SAR	SEA/Mya-98
HKN/8/2010	n/a	porcine	WRLFMD	Hong Kong SAR	SEA/Mya-98
HKN/10/2010	n/a	porcine	WRLFMD	Hong Kong SAR	SEA/Mya-98
HKN/9/2010	JQ070304	porcine	WRLFMD	Hong Kong SAR	SEA/Mya-98
HKN/11/2010	n/a	porcine	WRLFMD	Hong Kong SAR	SEA/Mya-98
SKR/7/2010	n/a	cattle	WRLFMD	Republic of Korea (South Korea)	SEA/Mya-98
SKR/1/2011	n/a	cattle	WRLFMD	Republic of Korea (South Korea)	SEA/Mya-98
SKR/3/2011	n/a	porcine	WRLFMD	Republic of Korea (South Korea)	SEA/Mya-98

continued on next page

label	accession	host(s)	lab	country	taxonomic information
SKR/13/2010	n/a	cattle	WRLFMD	Republic of Korea (South Korea)	SEA/Mya-98
Paju/SKR/2010*	n/a	cattle	NVRQS	Republic of Korea (South Korea)	SEA/Mya-98
GZ/CHA/2010*	JN998086	cattle	LVRI	China	SEA/Mya-98
MY/CHA/2010*	HQ652079	porcine	SiChuan University	China	SEA/Mya-98
VIT/NCVD-9/2010*	n/a	cattle	NVRQS	Vietnam	SEA/Mya-98
VIT/NCVD-8/2010*	n/a	cattle	NVRQS	Vietnam	SEA/Mya-98
33-P/CHA/2010*	JQ973889	bovine	LVRI	China	SEA/Mya-98
KOR/1/2010*	HM143846	cattle	NVRQS	Republic of Korea (South Korea)	SEA/Mya-98
SKR/4/2010	JQ070320	cattle	WRLFMD	Republic of Korea (South Korea)	SEA/Mya-98
MYA/7/98	DQ164925	bovine	WRLFMD	Myanmar	SEA/Mya-98
TAI/189/87*	KY091288	bovine	TRRL	Thailand	SEA
NEP/1/2015	MN276045	cattle	WRLFMD	Nepal	ME-SA/PanAsia-2/KAT-15
IRN/88/2009	KY091282	n/a	WRLFMD	Iran	ME-SA/PanAsia-2/ANT-10
IRN/31/2009	KY091284	cattle	WRLFMD	Iran	ME-SA/PanAsia-2/FAR-09
TUR/257/2008*	n/a	n/a	FMDI-Ankara	Turkey	ME-SA/PanAsia-2/TER-08
TUR/264/2009*	n/a	n/a	FMDI-Ankara	Turkey	ME-SA/PanAsia-2/SAN-09
IRN/6/2015	MN276044	cattle	WRLFMD	Iran	ME-SA/PanAsia-2/QOM-15
IRN/18/2010	KY091283	cattle	WRLFMD	Iran	ME-SA/PanAsia-2/BAL-09
PAK/16/2010	KY091285	cattle	WRLFMD	Pakistan	ME-SA/PanAsia-2/PUN-10
ISA/1/62	AJ303500	n/a	WRLFMD	Indonesia	ISA-1

*, not a WRLFMD Reference Number

n/a, not available