

FMD Genotyping Report

Lab Reference WRL batch Number: WRLMEG/2022/00019

Details: Downloaded from GenBank. Associated paper from Mohamed A. Soltan – Transboundary and Emerging Diseases (Wiley Online Library)

Downloaded on: 25/06/2022

Country of Origin: EGYPT

This report covers a VP1 sequence downloaded from GenBank (accession number ON569816) described in a paper published recently by Soltan at al. Transboundary and Emerging Diseases.

Please note that all our phylogenetic trees can be accessed via the internet at: <http://www.wrlfmd.org/>

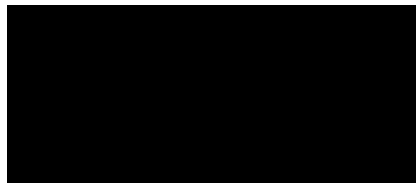
Results Approved By:



Date:

1/7/2022

Official Stamp:



To help us improve the quality of our service, please send any suggestions or requests to the Reference Laboratory by email (reflabsfeedback@pirbright.ac.uk).

FAO World Reference Laboratory for Foot-and-Mouth Disease (WRLFMD)

Genotyping Report v.2

FMDV serotype: O
Country: Egypt
Year: 2022
Batch: WRLMEG/2022/00019
No. of sequences: 1
Report date: 30th June 2022
Report generated by: Nick Knowles
Report checked by: Don King



Copyright © 2022 The Pirbright Institute, Ash Road, Pirbright, Woking GU24 0NF, United Kingdom.

www: <http://www.wrlfmd.org/>

email: reporting@pirbright.ac.uk

The contents of this report should not be reproduced without permission.

Virus sample name:	Egy/Sharquia1/22
Sender reference:	Egy/Sharquia1/22
Location of origin:	Sharquia
Country of origin:	Egypt
Date of collection:	02/2022
Host species:	cattle
Serotype:	O
Topotype:	EURO-SA
Lineage:	
Sublineage:	
Sequence length:	630
Ambiguities:	0
Material submitted for sequencing:	n/a
Harvest date of material:	n/a
Primers:	n/a
Received for sequencing:	n/a
Created:	25/06/2022
Last updated:	25/06/2022
VIBASys IDs: sample 50939, genome 50940, sequence viba_50941, sequencing info 50942	

Most Closely Related Sequences

sequence	virus name	Host	% Id.	# Ambig.	serotype	topotype	lineage	sublineage
viba_50982	Arauca/COL/2017 (157699)		95.3	0	O	EURO-SA		
viba_50994	Maicao/La Guajira/COL/2018 (157876)		94.3	0	O	EURO-SA		
viba_50998	San Diego/Cesar/COL/2018 (157878)		94.3	0	O	EURO-SA		
viba_51002	San Diego/Cesar/COL/2018 (157879)		94.2	0	O	EURO-SA		
viba_50990	Sogamoso/Boyaca/COL/2018 (157826)		94.0	0	O	EURO-SA		
viba_50986	Sogamoso/Boyaca/COL/2018 (157827)		94.0	0	O	EURO-SA		
viba_28774	Trujillo/Ven/06		91.0	0	O	EURO-SA		
viba_28770	Zulia/Ven/05		90.7	0	O	EURO-SA		
viba_28766	Trujillo/Ven/05		90.5	0	O	EURO-SA		
viba_28778	Trujillo/Ven/07		89.9	0	O	EURO-SA		

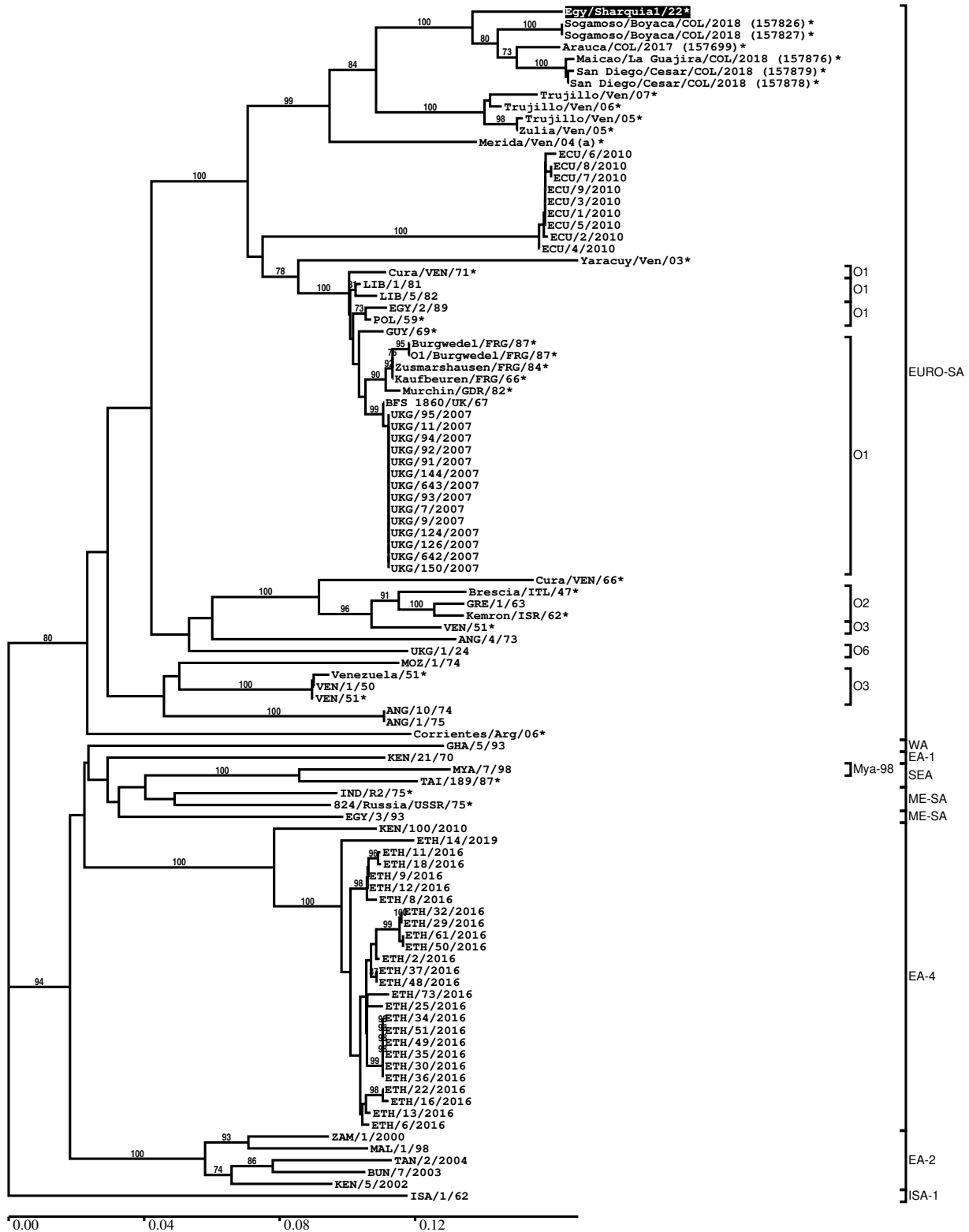
Most Closely Related Prototype Sequences

see <http://www.wrlfmd.org/fmdv-genome/fmd-prototype-strains>

sequence	virus name	Host	% Id.	# Ambig.	serotype	topotype	lineage	sublineage
viba_342	BFS 1860/UK/67	bovine	87.1	0	O	EURO-SA	O1	
viba_656	Venezuela/51		83.5	0	O	EURO-SA	O3	
viba_563	Brescia/ITL/47		83.2	4	O	EURO-SA	O2	
viba_44	Corrientes/Arg/06		80.6	0	O	EURO-SA		
viba_221	MAL/1/98		79.5	0	O	EA-2		
viba_263	TAN/2/2004	bovine	79.5	0	O	EA-2		
viba_74	KEN/5/2002	bovine	79.3	0	O	EA-2		
viba_576	IND/R2/75		79.1	0	O	ME-SA		
viba_199	MYA/7/98	bovine	79.1	0	O	SEA	Mya-98	
viba_104	GHA/5/93	bovine	79.1	0	O	WA		

Report on FMDV O in Egypt in 2022

Batch: WRLMEG/2022/00019



*, not a WRLFMD Reference Number

Analysis Parameters

VP1 subsequence extractor:	vp1_O
Query sequence set:	WRLMEG/2022/00019-Egypt-O (1 sequences)
Sequence database set:	allseqs_O (5632 sequences)
Prototype sequence set:	!prototypes_O (49 sequences)
Number of related sequences reported:	10
Minimal VP1 subsequence match length	600
Sequence alignment method:	muscle (default parameters)
Sequence alignment length:	636
Phylogeny reconstruction method:	fdnadist, fneighbor
Number of bootstrap samples:	1000
Random seed for bootstrapping:	1
Displaying bootstrap values above:	70.0%
Number of sequences in tree capped at:	100
Number of prototype sequences in tree:	10
VIBASys version:	reflabs-1.1.2

Sequences in the Phylogenetic Tree

All sequences in the tree are in taxonomic group FMDV/O

label	accession	host(s)	lab	country	taxonomic information
Egy/Sharquia1/22*	ON569816	cattle	SCU	Egypt	EURO-SA
Sogamoso/Boyaca/COL/2018 (157826)*	n/a	n/a	PANAFTOSA	Colombia	EURO-SA
Sogamoso/Boyaca/COL/2018 (157827)*	n/a	n/a	PANAFTOSA	Colombia	EURO-SA
Arauca/COL/2017 (157699)*	n/a	n/a	PANAFTOSA	Colombia	EURO-SA
Maicao/La Guajira/COL/2018 (157876)*	n/a	n/a	PANAFTOSA	Colombia	EURO-SA
San Diego/Cesar/COL/2018 (157879)*	n/a	n/a	PANAFTOSA	Colombia	EURO-SA
San Diego/Cesar/COL/2018 (157878)*	n/a	n/a	PANAFTOSA	Colombia	EURO-SA
Trujillo/Ven/07*	HQ695850	n/a	ARGENTINA	Venezuela	EURO-SA
Trujillo/Ven/06*	HQ695849	n/a	ARGENTINA	Venezuela	EURO-SA
Trujillo/Ven/05*	HQ695847	n/a	ARGENTINA	Venezuela	EURO-SA
Zulia/Ven/05*	HQ695848	n/a	ARGENTINA	Venezuela	EURO-SA
Merida/Ven/04(a)*	HQ695846	n/a	ARGENTINA	Venezuela	EURO-SA
ECU/6/2010	n/a	cattle	WRLFMD	Ecuador	EURO-SA
ECU/8/2010	n/a	cattle	WRLFMD	Ecuador	EURO-SA
ECU/7/2010	n/a	cattle	WRLFMD	Ecuador	EURO-SA
ECU/9/2010	n/a	cattle	WRLFMD	Ecuador	EURO-SA
ECU/3/2010	n/a	cattle	WRLFMD	Ecuador	EURO-SA
ECU/1/2010	n/a	cattle	WRLFMD	Ecuador	EURO-SA
ECU/5/2010	n/a	cattle	WRLFMD	Ecuador	EURO-SA
ECU/2/2010	n/a	cattle	WRLFMD	Ecuador	EURO-SA
ECU/4/2010	n/a	cattle	WRLFMD	Ecuador	EURO-SA
Yaracuy/Ven/03*	HQ695845	n/a	ARGENTINA	Venezuela	EURO-SA
Cura/VEN/71*	n/a	n/a	WRLFMD	Venezuela	EURO-SA/O1
LIB/1/81	n/a	n/a	WRLFMD	Libya	EURO-SA/O1
LIB/5/82	n/a	n/a	WRLFMD	Libya	EURO-SA/O1
EGY/2/89	n/a	n/a	WRLFMD	Egypt	EURO-SA/O1
POL/59*	AY593830	n/a	PIADC	Poland	EURO-SA/O1
GUY/69*	n/a	n/a	WRLFMD	Guyana	EURO-SA
Burgwedel/FRG/87*	n/a	n/a	WRLFMD	Federal Republic of Germany	EURO-SA/O1
O1/Burgwedel/FRG/87*	EU553843	n/a	WRLFMD/Tubingen	Federal Republic of Germany	EURO-SA/O1
Zusmarshausen/FRG/84*	n/a	porcine	n/a	Federal Republic of Germany	EURO-SA/O1

continued on next page

label	accession	host(s)	lab	country	taxonomic information
Kaufbeuren/FRG/66*	n/a	n/a	n/a	Federal Republic of Germany	EURO-SA/O1
Murchin/GDR/82*	n/a	n/a	n/a	German Democratic Republic	EURO-SA/O1
BFS 1860/UK/67	AY593815	bovine	PIADC	United Kingdom (BFS)	EURO-SA/O1
UKG/95/2007	n/a	cattle	WRLFMD	United Kingdom	EURO-SA/O1
UKG/11/2007	n/a	cattle	WRLFMD	United Kingdom	EURO-SA/O1
UKG/94/2007	n/a	cattle	WRLFMD	United Kingdom	EURO-SA/O1
UKG/92/2007	n/a	cattle	WRLFMD	United Kingdom	EURO-SA/O1
UKG/91/2007	n/a	cattle	WRLFMD	United Kingdom	EURO-SA/O1
UKG/144/2007	n/a	cattle	WRLFMD	United Kingdom	EURO-SA/O1
UKG/643/2007	n/a	cattle	n/a	United Kingdom	EURO-SA/O1
UKG/93/2007	n/a	cattle	WRLFMD	United Kingdom	EURO-SA/O1
UKG/7/2007	n/a	cattle	WRLFMD	United Kingdom	EURO-SA/O1
UKG/9/2007	n/a	cattle	WRLFMD	United Kingdom	EURO-SA/O1
UKG/124/2007	n/a	cattle	WRLFMD	United Kingdom	EURO-SA/O1
UKG/126/2007	n/a	cattle	WRLFMD	United Kingdom	EURO-SA/O1
UKG/642/2007	n/a	cattle	n/a	United Kingdom	EURO-SA/O1
UKG/150/2007	n/a	cattle	WRLFMD	United Kingdom	EURO-SA/O1
Cura/VEN/66*	n/a	n/a	WRLFMD	Venezuela	EURO-SA
Brescia/ITL/47*	M55287	n/a	BFAV	Italy	EURO-SA/O2
GRE/1/63	JX869191	n/a	WRLFMD	Greece	EURO-SA/O2
Kemron/ISR/62*	n/a	n/a	WRLFMD	Israel	EURO-SA/O2
VEN/51*	AY593827	n/a	PIADC	Venezuela	EURO-SA/O3
ANG/4/73	n/a	n/a	WRLFMD	Angola	EURO-SA
UKG/1/24	AY593829	n/a	PIADC	United Kingdom	EURO-SA/O6
MOZ/1/74	n/a	bovine	WRLFMD	Mozambique	EURO-SA
Venezuela/51*	AJ004645	n/a	BFAV	Venezuela	EURO-SA/O3
VEN/1/50	n/a	n/a	WRLFMD	Venezuela	EURO-SA/O3
VEN/51*	n/a	n/a	WRLFMD	Venezuela	EURO-SA/O3
ANG/10/74	n/a	n/a	WRLFMD	Angola	EURO-SA
ANG/1/75	n/a	n/a	WRLFMD	Angola	EURO-SA
Corrientes/Arg/06*	DQ834727	n/a	PANAFTOSA	Argentina	EURO-SA
GHA/5/93	AJ303488	bovine	WRLFMD	Ghana	WA
KEN/21/70	n/a	n/a	WRLFMD	Kenya	EA-1
MYA/7/98	DQ164925	bovine	WRLFMD	Myanmar	SEA/Mya-98
TAI/189/87*	KY091288	bovine	TRRL	Thailand	SEA
IND/R2/75*	AF204276	n/a	PD-FMD	India	ME-SA
824/Russia/USSR/75*	n/a	n/a	ARRIAH	USSR	ME-SA
EGY/3/93	EU553840	n/a	WRLFMD	Egypt	ME-SA
KEN/100/2010	KF135281	cattle	WRLFMD	Kenya	EA-4
ETH/14/2019	MN987489	cattle	WRLFMD	Ethiopia	EA-4
ETH/11/2016	MN987432	cattle	WRLFMD	Ethiopia	EA-4
ETH/18/2016	MN987436	cattle	WRLFMD	Ethiopia	EA-4
ETH/9/2016	MN987431	cattle	WRLFMD	Ethiopia	EA-4
ETH/12/2016	MN987433	cattle	WRLFMD	Ethiopia	EA-4
ETH/8/2016	MN987430	cattle	WRLFMD	Ethiopia	EA-4
ETH/32/2016	MN987441	bovine	WRLFMD	Ethiopia	EA-4
ETH/29/2016	MN987439	bovine	WRLFMD	Ethiopia	EA-4

continued on next page

label	accession	host(s)	lab	country	taxonomic information
ETH/61/2016	MN987450	bovine	WRLFMD	Ethiopia	EA-4
ETH/50/2016	MN987448	bovine	WRLFMD	Ethiopia	EA-4
ETH/2/2016	MN987425	cattle	WRLFMD	Ethiopia	EA-4
ETH/37/2016	MN987445	bovine	WRLFMD	Ethiopia	EA-4
ETH/48/2016	MN987446	bovine	WRLFMD	Ethiopia	EA-4
ETH/73/2016	MN987451	bovine	WRLFMD	Ethiopia	EA-4
ETH/25/2016	MN987438	bovine	WRLFMD	Ethiopia	EA-4
ETH/34/2016	MN987442	bovine	WRLFMD	Ethiopia	EA-4
ETH/51/2016	MN987449	bovine	WRLFMD	Ethiopia	EA-4
ETH/49/2016	MN987447	bovine	WRLFMD	Ethiopia	EA-4
ETH/35/2016	MN987443	bovine	WRLFMD	Ethiopia	EA-4
ETH/30/2016	MN987440	bovine	WRLFMD	Ethiopia	EA-4
ETH/36/2016	MN987444	bovine	WRLFMD	Ethiopia	EA-4
ETH/22/2016	MN987437	cattle	WRLFMD	Ethiopia	EA-4
ETH/16/2016	MN987435	cattle	WRLFMD	Ethiopia	EA-4
ETH/13/2016	MN987434	cattle	WRLFMD	Ethiopia	EA-4
ETH/6/2016	MN987428	cattle	WRLFMD	Ethiopia	EA-4
ZAM/1/2000	n/a	bovine	WRLFMD	Zambia	EA-2
MAL/1/98	DQ165074	n/a	WRLFMD	Malawi	EA-2
TAN/2/2004	KF561679	bovine	WRLFMD	Tanzania	EA-2
BUN/7/2003	n/a	n/a	WRLFMD	Burundi	EA-2
KEN/5/2002	DQ165073	bovine	WRLFMD	Kenya	EA-2
ISA/1/62	AJ303500	n/a	WRLFMD	Indonesia	ISA-1

*, not a WRLFMD Reference Number

n/a, not available