

# FAO World Reference Laboratory for Foot-and-Mouth Disease (WRLFMD)

## Genotyping Report

FMDV serotype: O  
Country: Republic of Korea (South Korea)  
Year: 2023  
Batch: WRLMEG/2023/00020  
No. of sequences: 1  
Report date: 26th May 2023  
Report generated by: Nick Knowles  
Report checked by: Don King

This report is prepared on behalf of the Animal and Plant Quarantine Agency (Ministry of Agriculture, Food and Rural Affairs, Republic of Korea) and covers a VP1 sequence submitted to the WRLFMD on 26/05/2023.



Copyright © 2023 The Pirbright Institute, Ash Road, Pirbright, Woking GU24 0NF, United Kingdom.

www: <http://www.wrlfmd.org/>

email: [reporting@pirbright.ac.uk](mailto:reporting@pirbright.ac.uk)

The contents of this report should not be reproduced without permission.

Virus sample name:	CJ/SKR/1/2023
Sender reference:	O/CJ/SKR/1/2023
Location of origin:	Chungju
Country of origin:	Republic of Korea (South Korea)
Date of collection:	10/05/2023
Host species:	
Serotype:	O
Topotype:	ME-SA
Lineage:	Ind-2001
Sublineage:	e
Sequence length:	633
Ambiguities:	0
Material submitted for sequencing:	n/a
Harvest date of material:	n/a
Primers:	n/a
Received for sequencing:	n/a
Created:	26/05/2023
Last updated:	26/05/2023
VIBASys IDs: sample 52899, genome 52900, sequence viba_52901, sequencing info 52902	

### Most Closely Related Sequences

sequence	virus name	Host	% Id.	# Ambig.	serotype	topotype	lineage	sublineage
viba_48642	MOG/1/2021		99.2	0	O	ME-SA	Ind-2001	e
viba_48654	MOG/4/2021		99.1	0	O	ME-SA	Ind-2001	e
viba_47291	LAO/3/2020	cattle	98.9	0	O	ME-SA	Ind-2001	e
viba_47295	LAO/4/2020	cattle	98.9	0	O	ME-SA	Ind-2001	e
viba_47287	LAO/2/2020	cattle	98.9	0	O	ME-SA	Ind-2001	e
viba_47316	TAI/4/2020	cattle	98.9	0	O	ME-SA	Ind-2001	e
viba_45022	VIT/7/2020	porcine	98.9	0	O	ME-SA	Ind-2001	e
viba_44987	VIT/28/2019	water buffalo	98.9	0	O	ME-SA	Ind-2001	e
viba_48005	MAY/35/2020(2)	cattle	98.9	0	O	ME-SA	Ind-2001	e
viba_44983	VIT/27/2019	cattle	98.9	0	O	ME-SA	Ind-2001	e

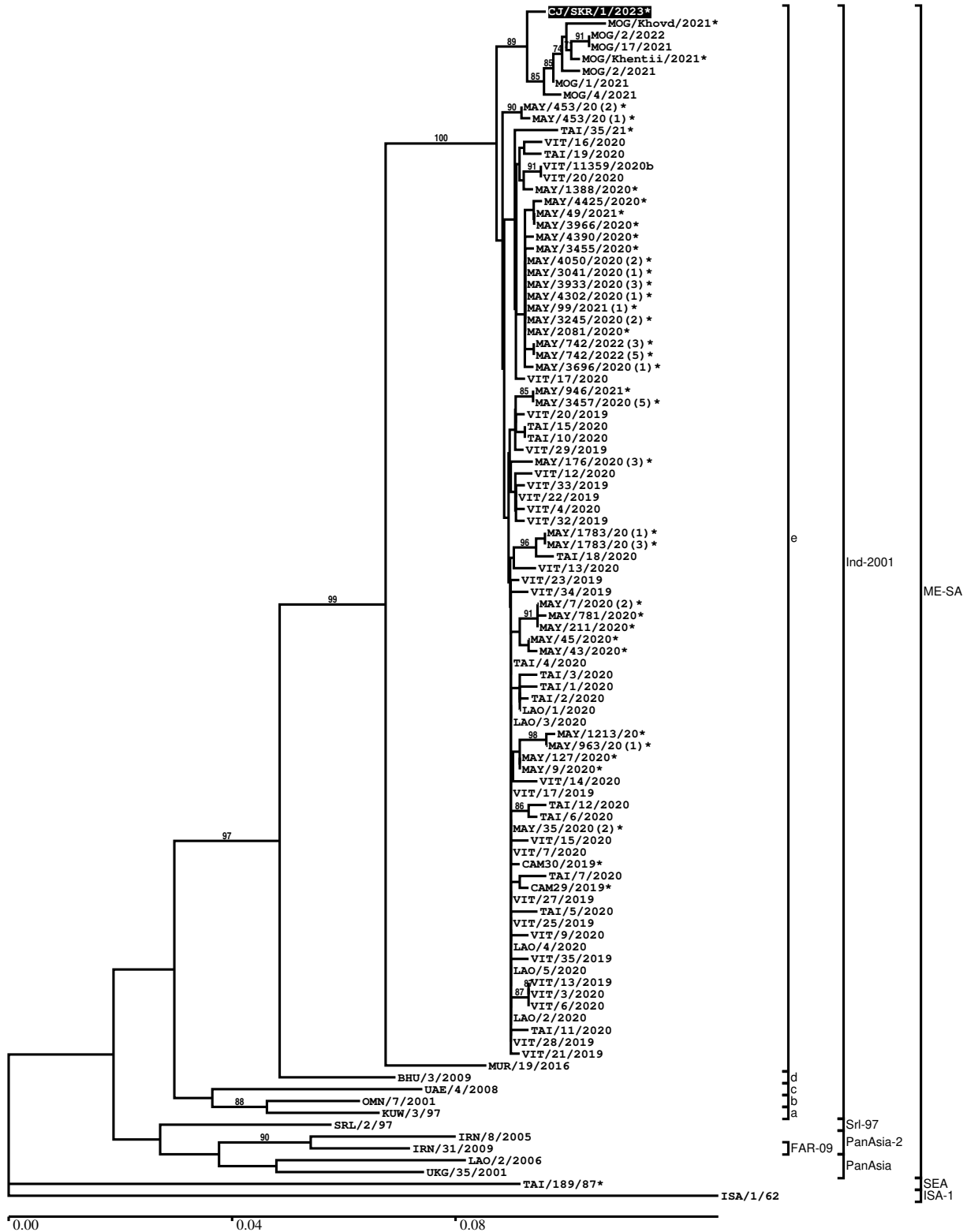
### Most Closely Related Prototype Sequences

see <http://www.wrlfmd.org/fmdv-genome/fmd-prototype-strains>

sequence	virus name	Host	% Id.	# Ambig.	serotype	topotype	lineage	sublineage
viba_30238	MUR/19/2016	cattle	95.3	0	O	ME-SA	Ind-2001	e
viba_293	BHU/3/2009	cattle	93.5	0	O	ME-SA	Ind-2001	d
viba_541	OMN/7/2001	bovine	90.7	0	O	ME-SA	Ind-2001	b
viba_705	KUW/3/97	bovine	90.7	0	O	ME-SA	Ind-2001	a
viba_27877	SRL/2/97	bovine	88.9	0	O	ME-SA	Srl-97	
viba_397	UAE/4/2008	gazelle	88.8	0	O	ME-SA	Ind-2001	c
viba_285	UKG/35/2001	porcine	88.3	0	O	ME-SA	PanAsia	
viba_766	IRN/31/2009	cattle	88.0	0	O	ME-SA	PanAsia-2	FAR-09
viba_650	IRN/8/2005	ovine	87.7	0	O	ME-SA	PanAsia-2	
viba_9021	LAO/2/2006	cattle	87.7	0	O	ME-SA	PanAsia	

Report on FMDV O in Republic of Korea (South Korea) in 2023

Batch: WRLMEG/2023/00020



\*, not a WRLFMD Reference Number

## Analysis Parameters

VP1 subsequence extractor:	vp1_O
Query sequence set:	WRLMEG/2023/00020-Republic of Korea (South Korea)-O (1 sequences)
Sequence database set:	allseqs_O (5882 sequences)
Prototype sequence set:	!prototypes_O (58 sequences)
Number of related sequences reported:	10
Minimal VP1 subsequence match length	600
Sequence alignment method:	muscle (default parameters)
Sequence alignment length:	636
Phylogeny reconstruction method:	fdnadist, fneighbor
Number of bootstrap samples:	1000
Random seed for bootstrapping:	1
Displaying bootstrap values above:	70.0%
Number of sequences in tree capped at:	100
Number of prototype sequences in tree:	10
VIBASys version:	reflabs-1.1.2

## Sequences in the Phylogenetic Tree

All sequences in the tree are in taxonomic group FMDV/O

label	accession	host(s)	lab	country	taxonomic information
CJ/SKR/1/2023*	n/a	n/a	APQA	Republic of Korea (South Korea)	ME-SA/Ind-2001/e
MOG/Khovd/2021*	ON982229	cattle	ARRIAH	Mongolia	ME-SA/Ind-2001/e
MOG/2/2022	n/a	cattle	WRLFMD	Mongolia	ME-SA/Ind-2001/e
MOG/17/2021	n/a	cattle	WRLFMD	Mongolia	ME-SA/Ind-2001/e
MOG/Khentii/2021*	ON982228	cattle	ARRIAH	Mongolia	ME-SA/Ind-2001/e
MOG/2/2021	n/a	n/a	WRLFMD	Mongolia	ME-SA/Ind-2001/e
MOG/1/2021	n/a	n/a	WRLFMD	Mongolia	ME-SA/Ind-2001/e
MOG/4/2021	n/a	n/a	WRLFMD	Mongolia	ME-SA/Ind-2001/e
MAY/453/20(2)*	n/a	cattle	MNFMDL	Malaysia	ME-SA/Ind-2001/e
MAY/453/20(1)*	n/a	cattle	MNFMDL	Malaysia	ME-SA/Ind-2001/e
TAI/35/21*	n/a	bovine	TRRL	Thailand	ME-SA/Ind-2001/e
VIT/16/2020	n/a	water buffalo	WRLFMD	Vietnam	ME-SA/Ind-2001/e
TAI/19/2020	n/a	cattle	WRLFMD	Thailand	ME-SA/Ind-2001/e
VIT/11359/2020b	n/a	cattle	RAHO6	Vietnam	ME-SA/Ind-2001/e
VIT/20/2020	n/a	porcine	WRLFMD	Vietnam	ME-SA/Ind-2001/e
MAY/1388/2020*	n/a	cattle	MNFMDL	Malaysia	ME-SA/Ind-2001/e
MAY/4425/2020*	n/a	cattle	MNFMDL	Malaysia	ME-SA/Ind-2001/e
MAY/49/2021*	n/a	water buffalo	MNFMDL	Malaysia	ME-SA/Ind-2001/e
MAY/3966/2020*	n/a	cattle	MNFMDL	Malaysia	ME-SA/Ind-2001/e
MAY/4390/2020*	n/a	cattle	MNFMDL	Malaysia	ME-SA/Ind-2001/e
MAY/3455/2020*	n/a	cattle	MNFMDL	Malaysia	ME-SA/Ind-2001/e
MAY/4050/2020(2)*	n/a	cattle	MNFMDL	Malaysia	ME-SA/Ind-2001/e
MAY/3041/2020(1)*	n/a	cattle	MNFMDL	Malaysia	ME-SA/Ind-2001/e
MAY/3933/2020(3)*	n/a	cattle	MNFMDL	Malaysia	ME-SA/Ind-2001/e
MAY/4302/2020(1)*	n/a	cattle	MNFMDL	Malaysia	ME-SA/Ind-2001/e
MAY/99/2021(1)*	n/a	cattle	MNFMDL	Malaysia	ME-SA/Ind-2001/e
MAY/3245/2020(2)*	n/a	cattle	MNFMDL	Malaysia	ME-SA/Ind-2001/e
MAY/2081/2020*	n/a	cattle	MNFMDL	Malaysia	ME-SA/Ind-2001/e
MAY/742/2022(3)*	n/a	goat	MNFMDL	Malaysia	ME-SA/Ind-2001/e
MAY/742/2022(5)*	n/a	goat	MNFMDL	Malaysia	ME-SA/Ind-2001/e
MAY/3696/2020(1)*	n/a	cattle	MNFMDL	Malaysia	ME-SA/Ind-2001/e
VIT/17/2020	n/a	cattle	WRLFMD	Vietnam	ME-SA/Ind-2001/e
MAY/946/2021*	n/a	cattle	MNFMDL	Malaysia	ME-SA/Ind-2001/e
MAY/3457/2020(5)*	n/a	cattle	MNFMDL	Malaysia	ME-SA/Ind-2001/e

*continued on next page*

label	accession	host(s)	lab	country	taxonomic information
VIT/20/2019	n/a	water buffalo	WRLFMD	Vietnam	ME-SA/Ind-2001/e
TAI/15/2020	n/a	cattle	WRLFMD	Thailand	ME-SA/Ind-2001/e
TAI/10/2020	n/a	cattle	WRLFMD	Thailand	ME-SA/Ind-2001/e
VIT/29/2019	n/a	water buffalo	WRLFMD	Vietnam	ME-SA/Ind-2001/e
MAY/176/2020(3)*	n/a	cattle	MNFMDL	Malaysia	ME-SA/Ind-2001/e
VIT/12/2020	n/a	cattle	WRLFMD	Vietnam	ME-SA/Ind-2001/e
VIT/33/2019	n/a	cattle	WRLFMD	Vietnam	ME-SA/Ind-2001/e
VIT/22/2019	n/a	cattle	WRLFMD	Vietnam	ME-SA/Ind-2001/e
VIT/4/2020	n/a	cattle	WRLFMD	Vietnam	ME-SA/Ind-2001/e
VIT/32/2019	n/a	cattle	WRLFMD	Vietnam	ME-SA/Ind-2001/e
MAY/1783/20(1)*	n/a	cattle	MNFMDL	Malaysia	ME-SA/Ind-2001/e
MAY/1783/20(3)*	n/a	cattle	MNFMDL	Malaysia	ME-SA/Ind-2001/e
TAI/18/2020	n/a	cattle	WRLFMD	Thailand	ME-SA/Ind-2001/e
VIT/13/2020	n/a	cattle	WRLFMD	Vietnam	ME-SA/Ind-2001/e
VIT/23/2019	n/a	water buffalo	WRLFMD	Vietnam	ME-SA/Ind-2001/e
VIT/34/2019	n/a	cattle	WRLFMD	Vietnam	ME-SA/Ind-2001/e
MAY/7/2020(2)*	n/a	cattle	MNFMDL	Malaysia	ME-SA/Ind-2001/e
MAY/781/2020*	n/a	cattle	MNFMDL	Malaysia	ME-SA/Ind-2001/e
MAY/211/2020*	n/a	cattle	MNFMDL	Malaysia	ME-SA/Ind-2001/e
MAY/45/2020*	n/a	cattle	MNFMDL	Malaysia	ME-SA/Ind-2001/e
MAY/43/2020*	n/a	cattle	MNFMDL	Malaysia	ME-SA/Ind-2001/e
TAI/4/2020	n/a	cattle	WRLFMD	Thailand	ME-SA/Ind-2001/e
TAI/3/2020	n/a	cattle	WRLFMD	Thailand	ME-SA/Ind-2001/e
TAI/1/2020	n/a	cattle	WRLFMD	Thailand	ME-SA/Ind-2001/e
TAI/2/2020	n/a	cattle	WRLFMD	Thailand	ME-SA/Ind-2001/e
LAO/1/2020	n/a	cattle	WRLFMD	Laos	ME-SA/Ind-2001/e
LAO/3/2020	n/a	cattle	WRLFMD	Laos	ME-SA/Ind-2001/e
MAY/1213/20*	n/a	cattle	MNFMDL	Malaysia	ME-SA/Ind-2001/e
MAY/963/20(1)*	n/a	cattle	MNFMDL	Malaysia	ME-SA/Ind-2001/e
MAY/127/2020*	n/a	cattle	MNFMDL	Malaysia	ME-SA/Ind-2001/e
MAY/9/2020*	n/a	cattle	MNFMDL	Malaysia	ME-SA/Ind-2001/e
VIT/14/2020	n/a	cattle	WRLFMD	Vietnam	ME-SA/Ind-2001/e
VIT/17/2019	n/a	porcine	WRLFMD	Vietnam	ME-SA/Ind-2001/e
TAI/12/2020	n/a	cattle	WRLFMD	Thailand	ME-SA/Ind-2001/e
TAI/6/2020	n/a	cattle	WRLFMD	Thailand	ME-SA/Ind-2001/e
MAY/35/2020(2)*	n/a	cattle	MNFMDL	Malaysia	ME-SA/Ind-2001/e
VIT/15/2020	n/a	cattle	WRLFMD	Vietnam	ME-SA/Ind-2001/e
VIT/7/2020	n/a	porcine	WRLFMD	Vietnam	ME-SA/Ind-2001/e
CAM30/2019*	MZ634456	cattle	APQA	Cambodia	ME-SA/Ind-2001/e
TAI/7/2020	n/a	cattle	WRLFMD	Thailand	ME-SA/Ind-2001/e
CAM29/2019*	MZ634455	cattle	APQA	Cambodia	ME-SA/Ind-2001/e
VIT/27/2019	n/a	cattle	WRLFMD	Vietnam	ME-SA/Ind-2001/e
TAI/5/2020	n/a	cattle	WRLFMD	Thailand	ME-SA/Ind-2001/e
VIT/25/2019	n/a	porcine	WRLFMD	Vietnam	ME-SA/Ind-2001/e
VIT/9/2020	n/a	cattle	WRLFMD	Vietnam	ME-SA/Ind-2001/e
LAO/4/2020	n/a	cattle	WRLFMD	Laos	ME-SA/Ind-2001/e
VIT/35/2019	n/a	cattle	WRLFMD	Vietnam	ME-SA/Ind-2001/e
LAO/5/2020	n/a	cattle	WRLFMD	Laos	ME-SA/Ind-2001/e
VIT/13/2019	n/a	porcine	WRLFMD	Vietnam	ME-SA/Ind-2001/e
VIT/3/2020	n/a	cattle	WRLFMD	Vietnam	ME-SA/Ind-2001/e
VIT/6/2020	n/a	cattle	WRLFMD	Vietnam	ME-SA/Ind-2001/e
LAO/2/2020	n/a	cattle	WRLFMD	Laos	ME-SA/Ind-2001/e
TAI/11/2020	n/a	cattle	WRLFMD	Thailand	ME-SA/Ind-2001/e
VIT/28/2019	n/a	water buffalo	WRLFMD	Vietnam	ME-SA/Ind-2001/e
VIT/21/2019	n/a	cattle	WRLFMD	Vietnam	ME-SA/Ind-2001/e
MUR/19/2016	MG972510	cattle	WRLFMD	Mauritius	ME-SA/Ind-2001/e
BHU/3/2009	KM921814	cattle	WRLFMD	Bhutan	ME-SA/Ind-2001/d
UAE/4/2008	KM921876	gazelle	WRLFMD	United Arab Emirates	ME-SA/Ind-2001/c
OMN/7/2001	DQ164941	bovine	WRLFMD	Oman	ME-SA/Ind-2001/b
KUW/3/97	DQ164904	bovine	WRLFMD	Kuwait	ME-SA/Ind-2001/a
SRL/2/97	AJ303531	bovine	WRLFMD	Sri Lanka	ME-SA/Srl-97
IRN/8/2005	KY091281	ovine	WRLFMD	Iran	ME-SA/PanAsia-2
IRN/31/2009	KY091284	cattle	WRLFMD	Iran	ME-SA/PanAsia-2/FAR-09
LAO/2/2006	EU667451	cattle	WRLFMD	Laos	ME-SA/PanAsia
UKG/35/2001	AJ539141	porcine	PIADC	United Kingdom	ME-SA/PanAsia
TAI/189/87*	KY091288	bovine	TRRL	Thailand	SEA

continued on next page

---

<b>label</b>	<b>accession</b>	<b>host(s)</b>	<b>lab</b>	<b>country</b>	<b>taxonomic information</b>
ISA/1/62	<a href="#">AJ303500</a>	n/a	WRLFMD	Indonesia	ISA-1

---

\*, not a WRLFMD Reference Number

n/a, not available